



# 2500

## Rear Mounted Blade

Rev 02-16

Part No. 00767428P

# PART'S MANUAL

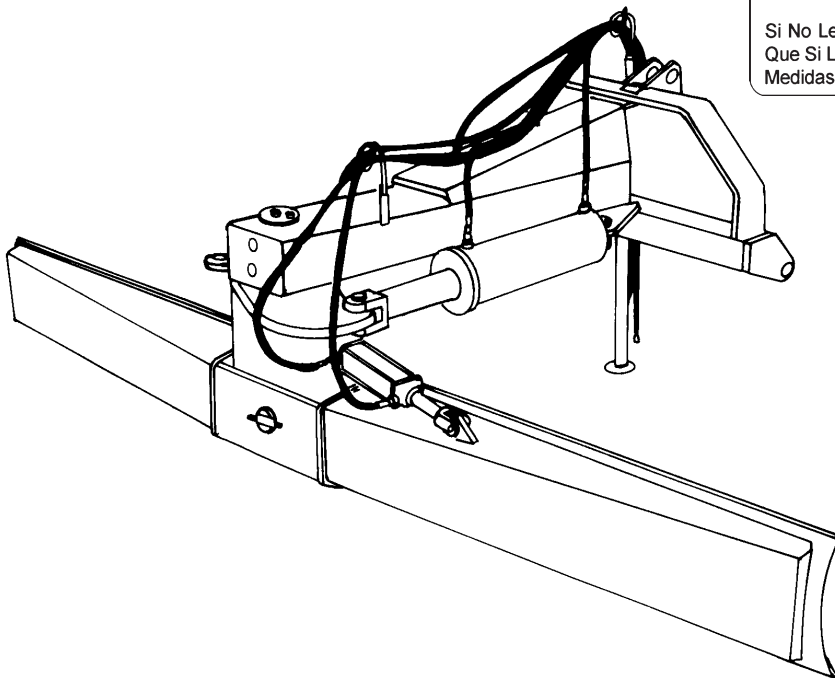


An Operator's Manual was shipped with the equipment in the Manual Canister. This Operator's Manual is an integral part of the safe operation of this machine and must be maintained with the unit at all times. **READ, UNDERSTAND, and FOLLOW** the Safety and Operation Instructions contained in this manual before operating the equipment. If the Operator's Manual is not with the equipment, contact your dealer or Servis-Rhino (800-446-5158) to obtain a Free copy before operating the equipment.

## ATENCIÓN!

LEA EL INSTRUCTIVO

Si No Lee Ingles, Pida Ayuda a Alguien  
Que Si Lo Lea Para Que le Traduzca las  
Medidas de Seguridad.



## RHINO®

1020 S. Sangamon Ave.  
Gibson City, IL 60936  
800-446-5158

Email: [parts@servis-rhino.com](mailto:parts@servis-rhino.com)

© 2007 Alamo Group Inc.



# TO THE OWNER/OPERATOR/DEALER

All implements with moving parts are potentially hazardous. There is no substitute for a cautious, safe-minded operator who recognizes the potential hazards and follows reasonable safety practices. The manufacturer has designed this implement to be used with all its safety equipment properly attached to minimize the chance of accidents.

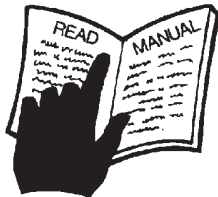
**BEFORE YOU START!!** Read the safety messages on the implement and shown in your manual.  
Observe the rules of safety and common sense!



# DANGER

FAILING TO FOLLOW SAFETY MESSAGES AND OPERATING INSTRUCTIONS CAN CAUSE SERIOUS BODILY INJURY OR EVEN DEATH TO OPERATOR AND OTHERS IN THE AREA.

1.



2. NO RIDERS, NO CHILDREN OPERATORS



3. USE SAFETY SHOES, HARD HAT, SAFETY GLASSES, SEAT BELTS, & ROPS



4. BLOCK UP SECURELY BEFORE WORKING UNDER.



1. Study and understand Operator's Manuals, Safety Signs, and Instructional Decals for tractor & flail mower to prevent misuse, abuse, & accidents. Practice before operating mower in a confined area or near passersby.

- Learn how to stop engine suddenly in an emergency. Be alert for passersby and especially children.

2. Allow no children on or near implement or tractor. Allow no riders on tractor or implement. Falling off can cause serious injury or death from being runover by tractor or mower or contact with Flail Mower Blades.

3. Operate only with tractor having Roll-Over Protective Structure (ROPS) and with seatbelt fastened securely and snugly to prevent injury and possible death from falling off or tractor overturn. Personal Protective Equipment such as Hard Hat, Safety Glasses, Safety Shoes, and Ear Plugs are recommended.

4. Block up or support raised machine and all lifted components securely before putting hands or feet under or working underneath any lifted component to prevent crushing injury or death from sudden dropping or inadvertent operation of controls. Make certain that area is clear before lowering or folding.

5. Before transporting, put Lift Lever in detent or full-lift position. Install Transport Safety Devices securely on folding implements. Slow down when turning and on hillsides.

- Install \*\*Restrictor in folding circuit to slow down lowering and unfolding if action is faster than is desirable.

6. Make certain that SMV sign, Warning Lights, and Reflectors are clearly visible. Follow local traffic codes.

7. Never operate with Flail Mower or Folding Section raised if passersby, bystanders or traffic are in the area to reduce possibility of injury or death from objects thrown by Blades under Shields or implement structure.

8. Before dismounting, secure flail mower in transport position or lower to ground.

• Put tractor in park or set brake, disengage PTO, stop engine, remove key, and wait until noise of rotation has ceased to prevent entanglement in rotating parts which may cause injury or death.

- Never mount or dismount a moving vehicle. Crushing from runover may cause injury or death.

5. TRANSPORT SAFELY, LOCK UP.



WARRANTY INFORMATION:

6. USE SMV, LIGHTS, & REFLECTORS.



7. DO NOT OPERATE WITH MOWER OR WING RAISED.



8. DO NOT MOUNT OR DISMOUNT WHILE MOVING.



002369

Read and understand the complete Warranty Statement found in this Manual. Fill out the Warranty Registration Form in full and return it within 30 Days. Make certain the Serial Number of the Machine is recorded on the Warranty Card and on the Warranty Form that you retain. The use of "will-fit" parts will void your warranty and can cause catastrophic failure with possible injury or death.

# **PARTS SECTION**

# PARTS ORDERING GUIDE

The following instructions are offered to help eliminate needless delay and error in processing purchase orders for the equipment in this section.

1. The Parts Section is prepared in logical sequence and grouping of parts that belong to the basic machine featured in this manual. Part Numbers and Descriptions are given to help locate the parts and quantities required.
2. The Purchase Order must include the name and address of the person or organization ordering the parts, who should be charged, and if possible, the serial number of the machine for which the parts are ordered.
3. The Purchase Order must clearly list the quantity of each part, the complete and correct part number (be sure to include all periods), and the basic name of the part.
4. The Manufacturer reserves the right to substitute parts where applicable.
5. Some parts are unlisted items which are special production items not normally stocked and are subject to special handling. Request a quotation for such parts before sending a Purchase Order.
6. The Manufacturer reserves the right to change prices without prior notice.

**NOTE:** Please refer to The Safety Section in the front of this Manual for the proper Part Number when ordering Replacement Safety Decals.



For maximum safety and to guarantee optimum product reliability, always use genuine Servis-Rhino Parts. The use of inferior replacement parts may cause premature or catastrophic failure which could result in serious injury or death. Direct any questions regarding parts to:

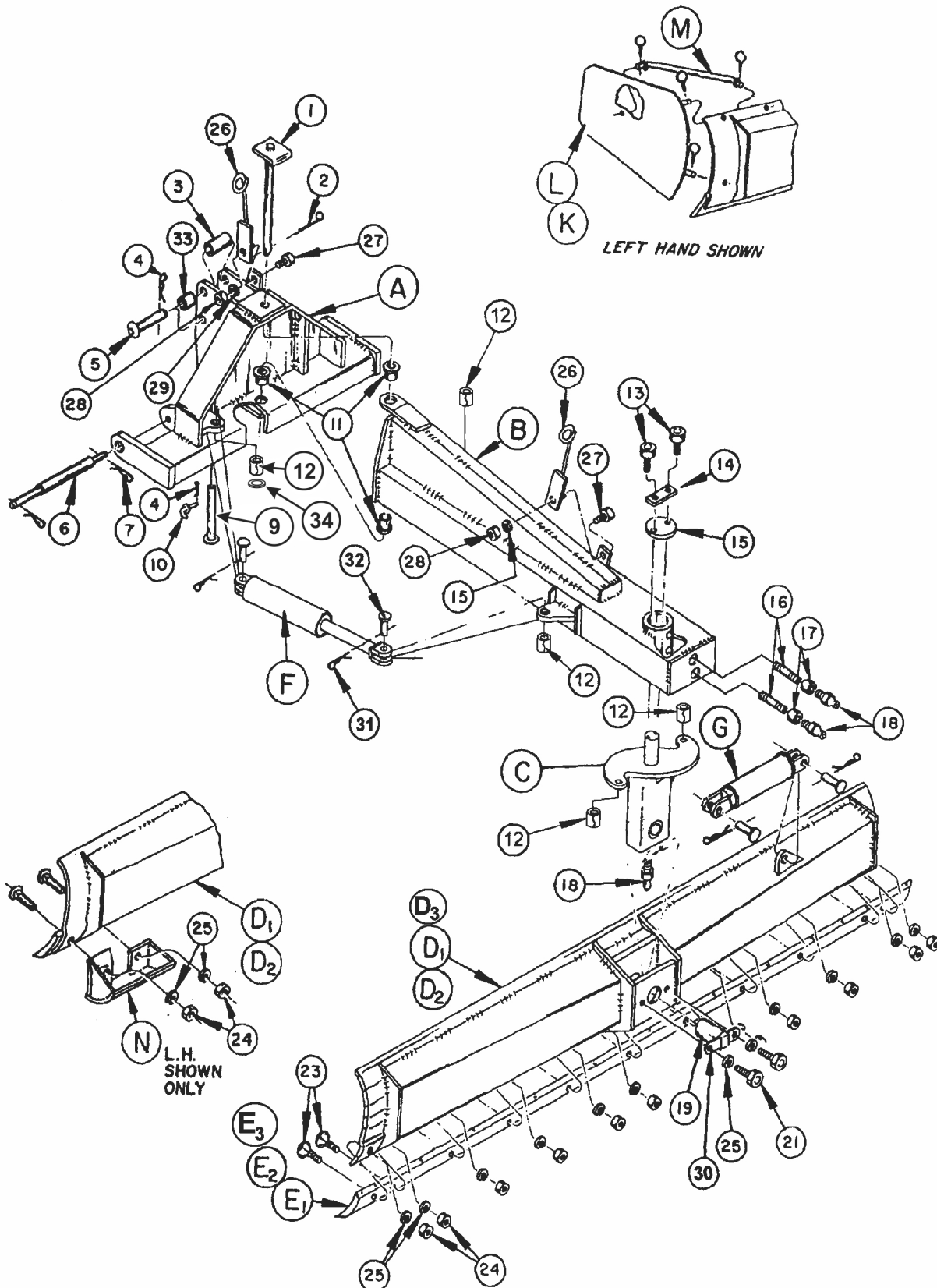


**RHINO®**  
1020 S. Sangamon Ave.  
Gibson City, IL 60936  
800-446-5158  
Email: [parts@servis-rhino.com](mailto:parts@servis-rhino.com)

## PART NAME INDEX

BRACKET ASSY - CONTROL VALVE.....	8
CONTROL VALVE ASSY .....	9
CYLINDER, HYDRAULIC SWING Rev 03-07 .....	7
CYLINDER, HYDRAULIC TILT .....	13
GENERAL ASSY Rev 06-05 .....	4
HUB & TIRE ASSY .....	12
PLANER WHEEL ASSY Rev 07-05 .....	11
REAR BLADE HYDRUALICS 8' & 10' & 12' .....	6
SELECTOR VALVE ASSY .....	10

# GENERAL ASSY Rev 06-05

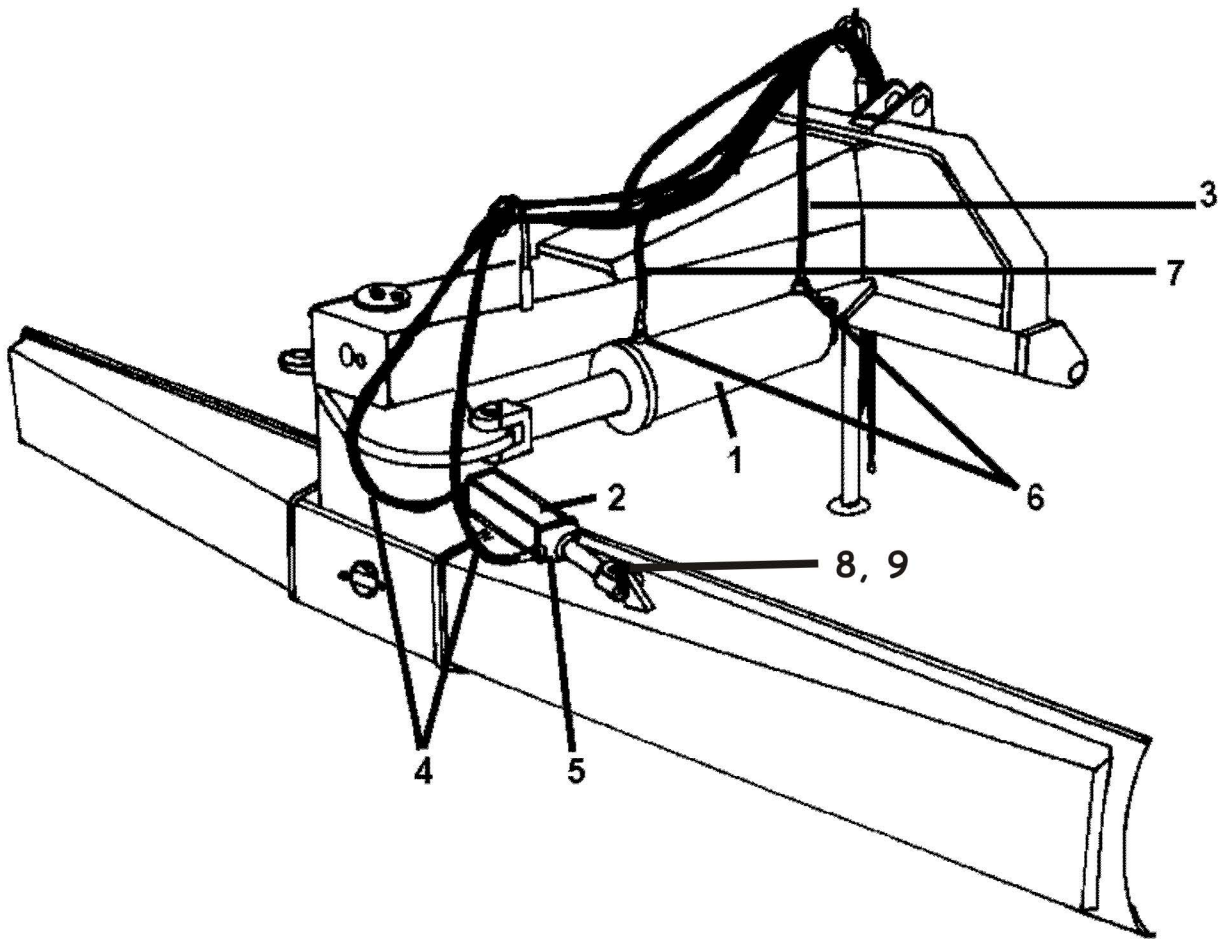


## GENERAL ASSY Rev 06-05

ITEM	PART NO.	QTY.	DESCRIPTION
A	00767371	1	A-FRAME WELDMENT
B	00767383	1	MAINFRAME WELDMENT
C	00767399	1	MOLDBOARD CARRIER WELDMENT
D1	00767445	1	MOLDBOARD WELDMENT ( 10' )
D2	00767407	1	MOLDBOARD WELDMENT ( 12' )
D3	00779809	1	MOLDBOARD WELDMENT ( 8' )
E1	3W8	2	GRADER BLADE ( 12' )
E2	691372	1	GRADER BLADE ( 10' )
E3	441111	1	GRADER BLADE ( 8' )
F	00767420A	2	HYDRAULIC CYLINDER W/OUT PINS
G	00761802A	1	HYDRAULIC CYLINDER
K	0691360200	1	END PLATE MLDBRD (RH)
L	0691360300	1	END PLATE MLDBRD (LH)
M	0691360100	2	BRACE, END PLATE
	0691360001	8	LOCKING PIN
N	0691380000	2	SKID SHOE W/HARDWARE
	2A3101120	4	PLOW BOLT
1	00767440	1	PIVOT PIN
2	164024	1	COTTER PIN
3	0758550031	1	TOP LINK BUSHUNG
4	37107B13	2	PIN CLIP
5	69109	1	TOP PIN CLIP
6	69141	2	WRIST CLIP
7	2196	4	RETAINING CLIP
9	0831140000	1	SUPPORT STAND WELDMENT
10	69112	1	LOCK PIN
11	00767387	3	BUSHING
12	00767414	5	BUSHING
13	02929200	2	BOLT
14	00767437	1	RETAINER CLIP
15	00767436	1	KING PIN CAP
16	19C1220	2	NIPPLE
17	19D1200	2	COUPLING
18	4720	3	GREASE FITTING
19	00767443	1	MOLDBOARD PIVOT PPIN WELDMENT
21	7A101110	2	BOLT
	7A101110	10	MOLDBOARD ( 8' )
23	2A3101116	12	PLOW BOLT ( MOLDBOARD 10' )
	2A3101116	16	PLW-BLT 5/8 X 2 ( MOLDBOARD 12' )
	2A3101116	10	PLW-BLT 5/8 X 2 ( MOLDBOARD 8' )
24	00010400	10	NUT
25	00010300	14	LOCKWASHER ( MOLDBOARD 10' )
	00010300	18	LOCKWASHER ( MOLDBOARD 12' )
26	0691320000	2	HYDRAULIC HOSE BRACKET ASSY.
27	7A101116	2	BOLT
28	00010400	2	NUT
29	00010300	2	LOCKWASHER
30	69111	1	PIN RETAINER
31	00036900	4	COTTER PIN
32	00767470	4	PIN
33	00767321	4	BUSHING
34	301042	1	WASHER, 2-1/16 x 3 x 3/16 PLT

\* Add 4 - 12' Moldboard

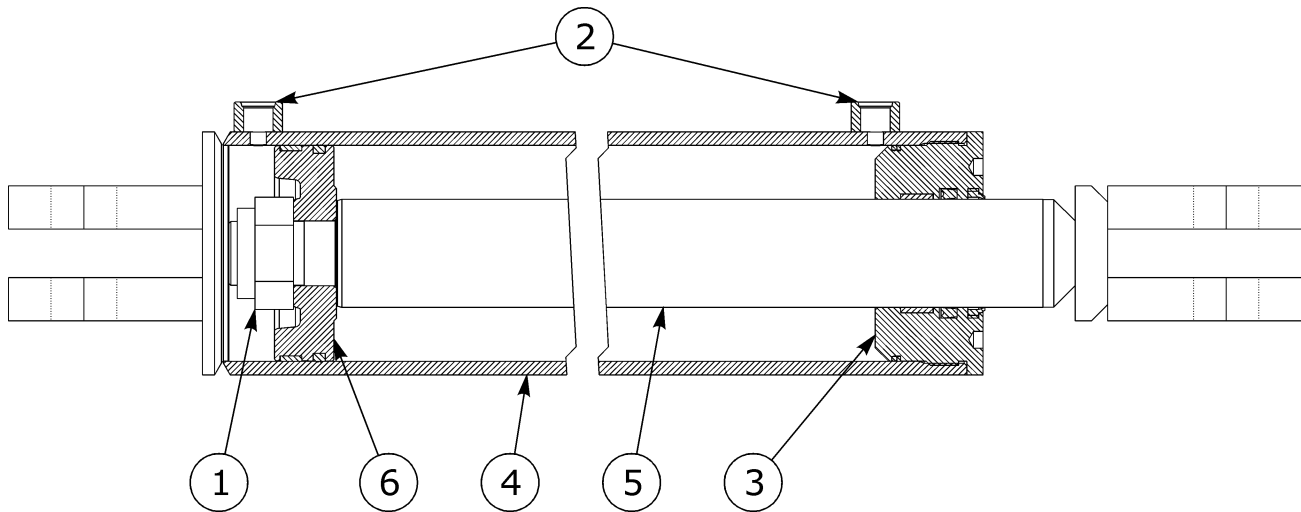
## REAR BLADE HYDRUALICS 8' & 10' & 12'



ITEM	PART NO.	QTY.	DESCRIPTION
1	00767420A	2	CYLINDER HYD 18STROKE 5BORE
2	00761802A	1	HYDRAULIC CYLINDER
3	691302	2	HYD HOSE-3/8-8W/(1/2FITTING
4	B651302	2	HOSE CENTER 15
5	11565	2	FITTING,ELBOW 8MB - 8FPX90
6	0652141311	4	ADP HYD STGHT 8MB - 8FP
7	651132	2	HOSE #6 - 8MP - 8MP - 144LG
8	8354	2	PIN, CYLINDER
9	00606000	2	COTTER PIN, 3/16" x 2"

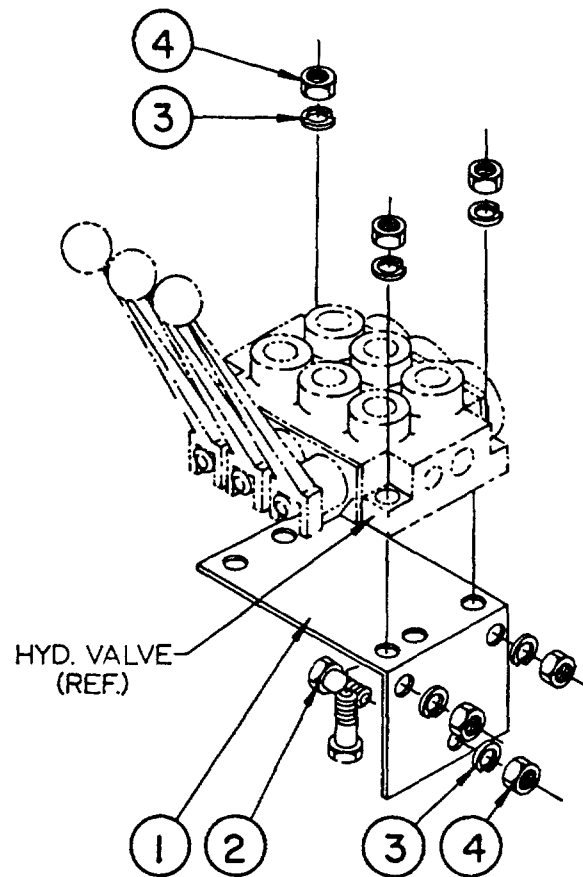


# CYLINDER, HYDRAULIC SWING Rev 03-07



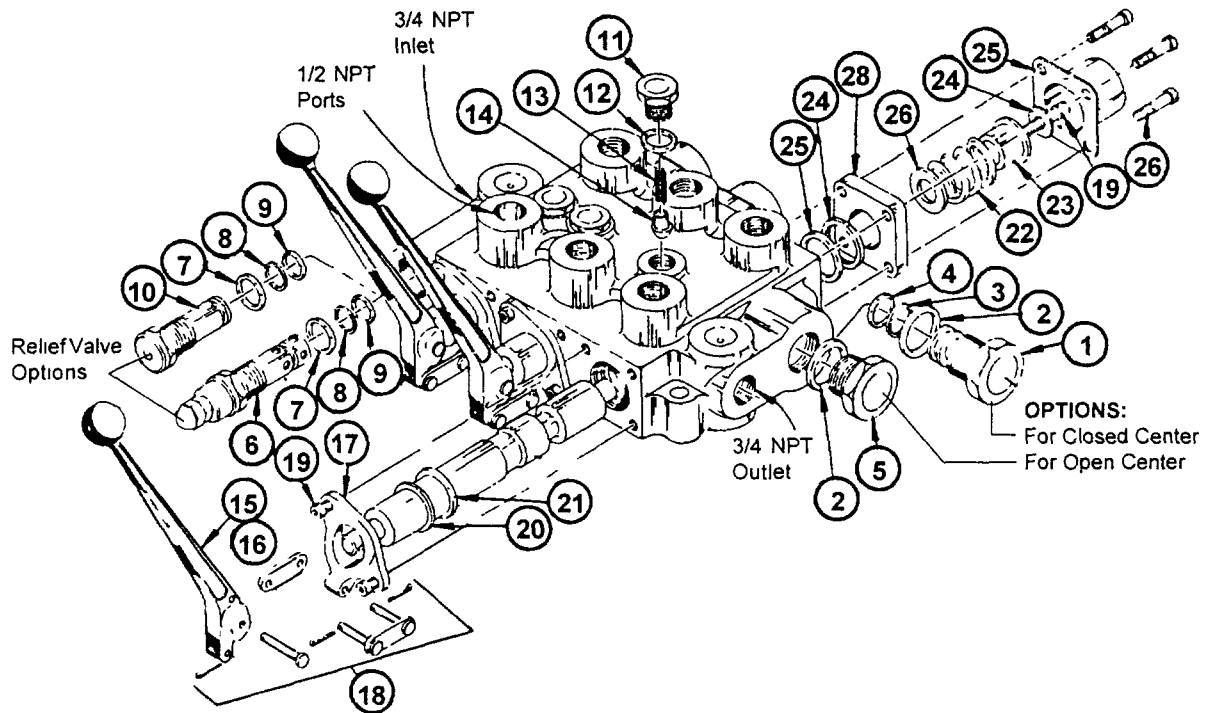
ITEM	PART NO.	QTY.	DESCRIPTION
	<b>00767420A</b>	-	<b>CYLINDER, HYDRAULIC 5 X 18</b>
1	00775917	1	NUT, HEX 1-1/2-12 UNF GR.C
2	00774359	2	HYDRUALIC FITTING PLUG
3	00776101	1	HEAD, CYLINDER 5.00-2.50 W/RING
4	00776102	1	TUBE, CYLINDER 5.00-18.00-W-S
5	00776103	1	ROD, CYLINDER 2.50-18.00-W-S
6	00776104	1	PISTON, CYLINDER 4.50-1.50-WR-
	02975533	-	SEAL KIT

## BRACKET ASSY - CONTROL VALVE



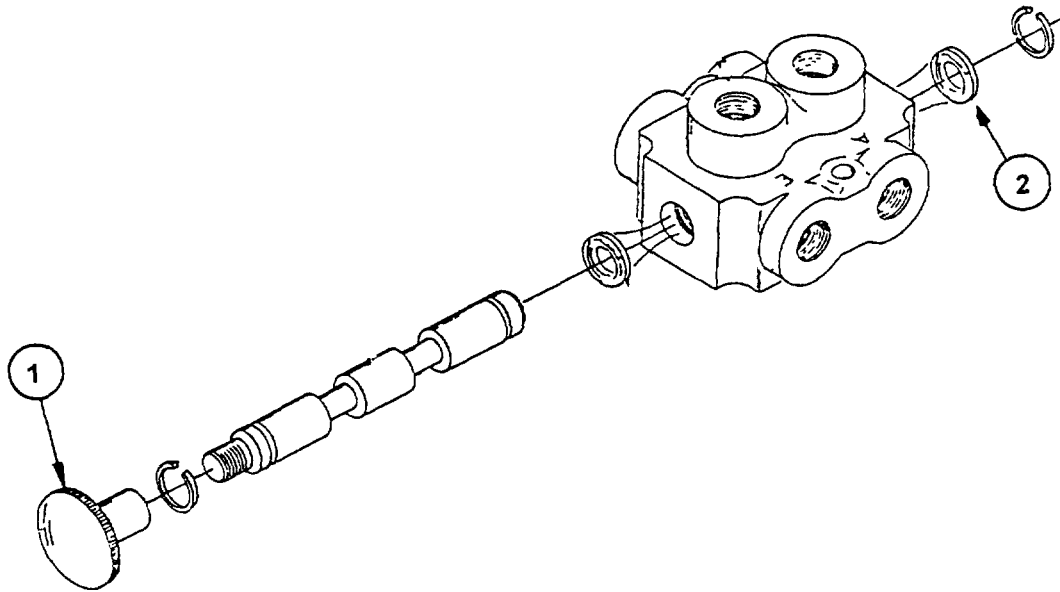
ITEM	PART NO.	QTY.	DESCRIPTION
1	B651401	1	BRACKET W/FASTENERS
2	00021900	6	BOLT
3	00011700	6	LOCKWASHER
4	00750940	6	NUT

# CONTROL VALVE ASSY



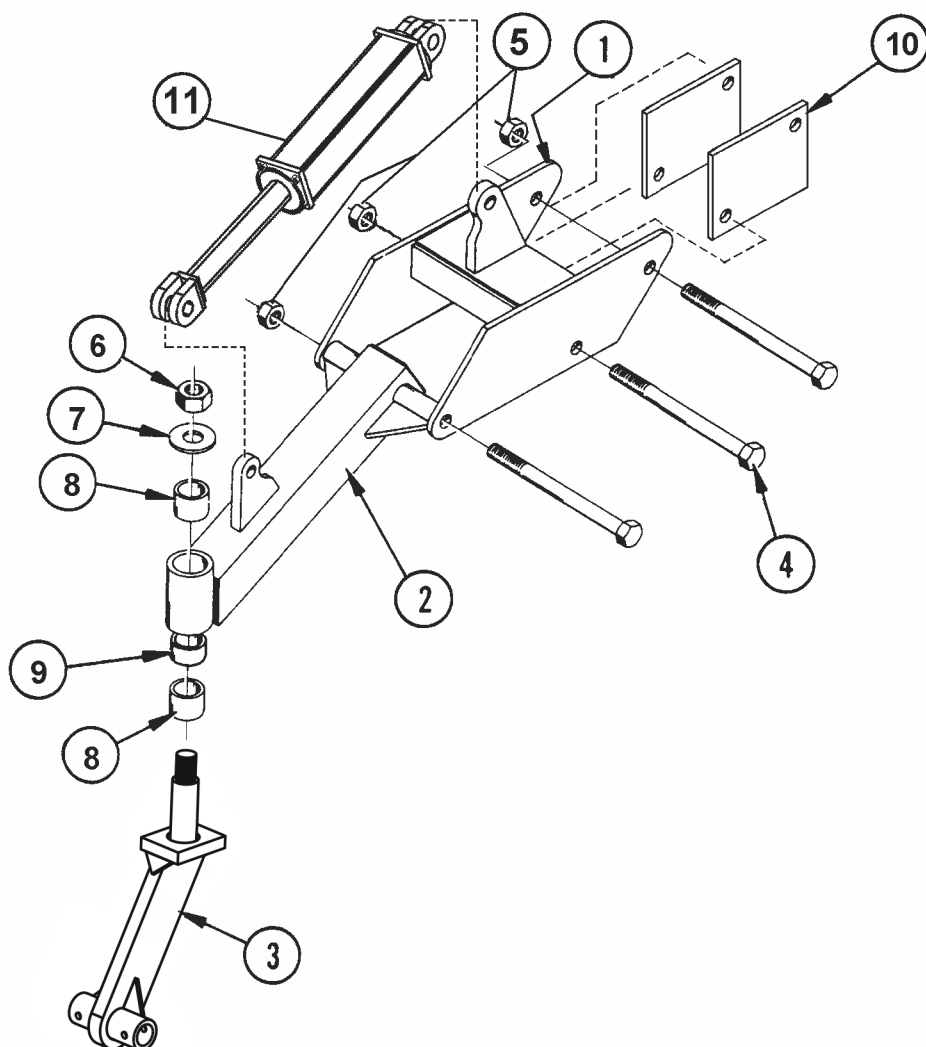
ITEM	PART NO.	QTY.	DESCRIPTION
	<b>0691700000</b>	<b>1</b>	<b>CONTROL VALVE OPEN CTR.</b>
	<b>0691710000</b>	<b>1</b>	<b>CONTROL VALVE CLOSED CTR.</b>
1	6514042	1	CLOSED CTR. PLUG ASY. (INCL. ITEMS 2,3, & 4)
2	6514041	2	O-RING SEAL
3	6514044	1	BACK-UP WASHER
4	6514045	1	O-RING SEAL
5	6514039	1	CONVERSION PLUG ASY. OPEN CTR.
6	0691700001	1	ADJ. RELIEF ASY. (INCL. ITEMS 10-13)
7	6514034	2	O-RING SEAL
8	6514035	2	BACK-UP WASHER
9	6514036	2	O-RING SEAL
10	6514037	1	NO-RELIEF ASY. (INCL. ITEMS 12-14)
11	6514029	3	PLUG ONLY
12	6514028	3	O-RING SEAL
13	6514027	3	SPRING
14	6514026	3	LOAD CHECK POPPET
15	65140A49	3	HANDLE & BRACKET ASY. (INCL. ITEMS 21-23)
16	65140A47	3	HANDLE
17	65140A46	3	HANDLE BRACKET
18	65140A48	3	PIN KIT
19	7E4204	9	BOLT
20	6514012	6	O-RING SPOOL WASHER
21	6514013	6	SPOOL SEAL
22	6514018	3	STOP WASHER
23	6514019	3	SPRING
24	6514020	3	STOP COLLAR
25	6514021	3	WASHER
26	6514022	3	END CAP
27	00021400	12	BOLT
28	6514014	3	PLATE

## SELECTOR VALVE ASSY



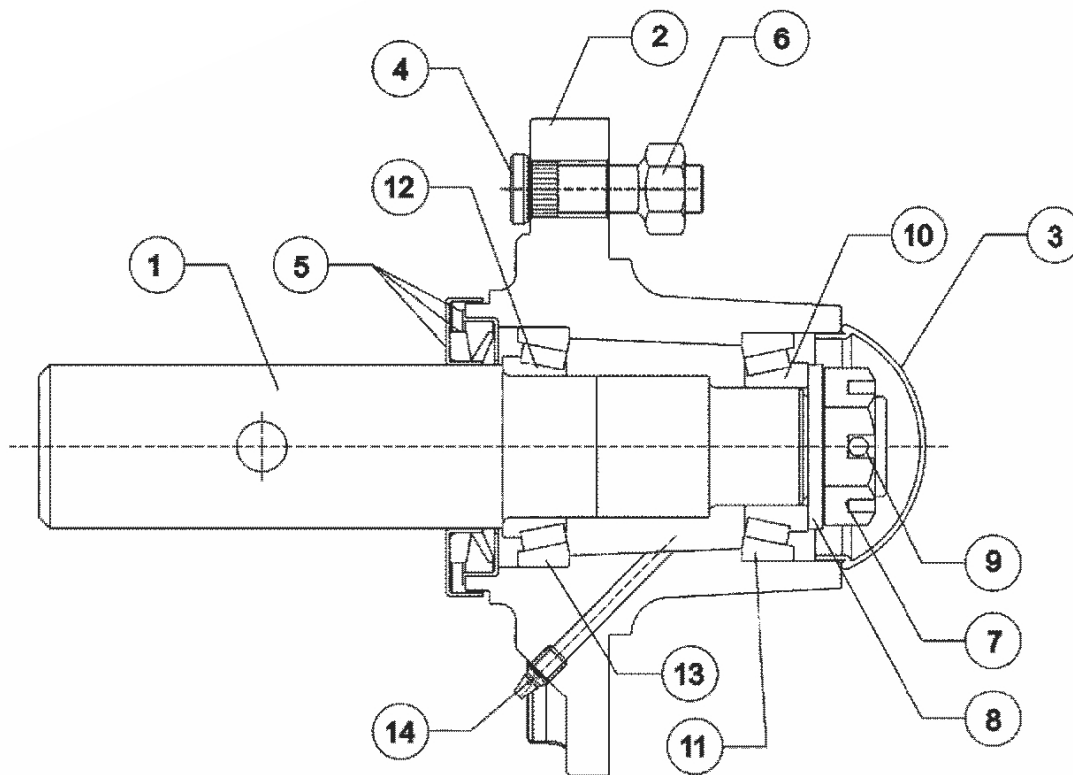
ITEM	PART NO.	QTY.	DESCRIPTION
	<b>0781300000</b>	<b>1</b>	<b>SELECTOR VALVE ASSY</b>
1	0781300003	1	KNOB
2	0781300005	1	SEAL

# PLANER WHEEL ASSY Rev 07-05



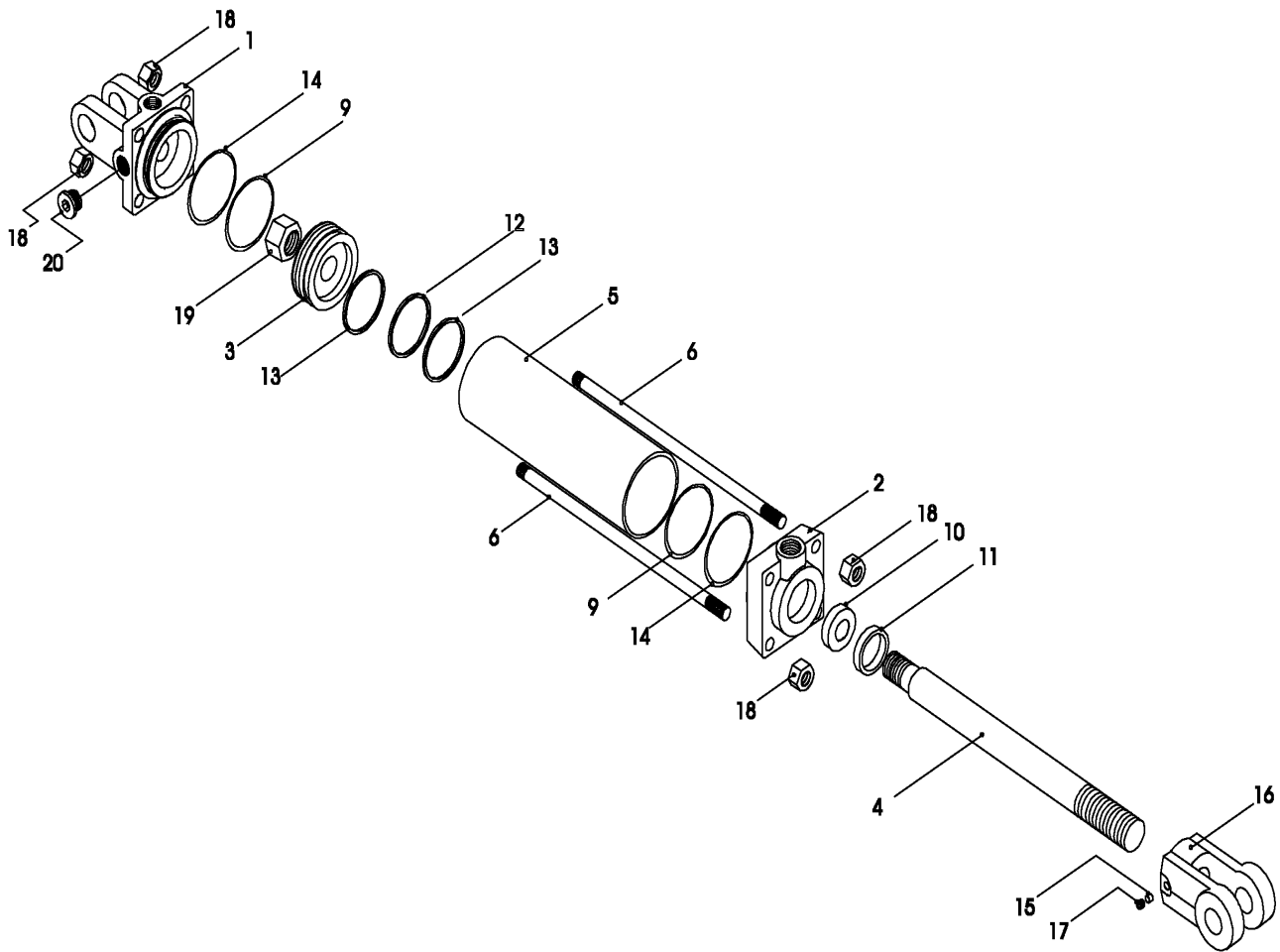
ITEM	PART NO.	QTY.	DESCRIPTION
1	0801100100	1	PLANER WHEEL MOUNT WELDMENT
2	0801100200	1	PLANER WHEEL BEAM WELDMENT
3	00788420	1	CASTER WELDMENT
4	7A168120	3	BOLT
5	02030300	3	NUT, HEX
6	5JRA2460	1	LOCKNUT
7	59113	1	WASHER
8	5910111	2	BUSHING
9	5910112	1	BUSHING SPACER
	371247	2	HUB ASSEMBLY (NOT SHOWN)
10	00767370	2	SPACER PLATE
11	00761802A	1	HYDRAULIC CYLINDER

# HUB & TIRE ASSY



ITEM	PART NO.	QTY.	DESCRIPTION
	<b>00775616A</b>	-	<b>HUB &amp; SPINDLE ASSY</b>
1	00774821	1	SPINDLE SINGLE WHEEL
2	00779456	1	HUB W/ CUPS & STUBS
3	00756492	1	DUST CAP
4	00752177	5	BOLT, STUD 1/2-20 NF X 1-7/8
5	00778108	1	SEAL PROTECTOR
6	00756014	5	ROTOR
7	00756490	1	NUT SLOTTED THIN 1 NF PLC
8	00756493	1	WASHER
9	00026200	1	PIN-COTTER 5/32 X 1-1/2
10	00750434	1	BEARING CONE INSIDE
11	00756576	1	BEARING CUP OUTSIDE
12	0371242102	1	BEARING CONE
13	00756577	1	BEARING CUP INSIDE
14	00003500	1	ZERK FITTING 1/8 STRAIGHT
15	00766911A	4	ASY,AIRCRAFT TIRE & WHEEL
16	00025200	4	NOTAT TIRE & WHEEL

# CYLINDER, HYDRAULIC TILT



ITEM	PART NO.	QTY.	DESCRIPTION
	<b>00761802A</b>	-	<b>HYDRAULIC CYLINDER</b>
1	00774728	1	CLEVIS CAP
2	00774735	1	ROD CAP
3	00774733	1	PISTON
4	00774739	1	ROD
5	00774750	1	TUBE
6	00774745	4	TIE ROD
9	*	2	END CAP O-RING
10	*	1	ROD WIPER SEAL
11	*	1	ROD DUST SEAL
12	*	1	PISTON SEAL
13	*	2	PISTON WEAR RING
14	*	2	END CAP BACKUP WASHERS
15	3047117	1	NYLON THREAD PROTECTOR
16	1917140	1	ROD CLEVIS
17	00774740	1	SET SCREW
18	33017H5C	8	TIE ROD NUT
19	5JRC16140	1	PISTON NUT
20	1917132	1	PORT PLUG
*	00774759	-	CONSISTS OF SEAL KIT





# SERVIS-RHINO

## LIMITED WARRANTY

### 1. LIMITED WARRANTIES

- 1.01. Servis-Rhino warrants for one year from the purchase date to the original non-commercial, governmental, or municipal purchaser ("Purchaser") and warrants for six months to the original commercial or industrial purchaser ("Purchaser") that the goods purchased are free from defects in material or workmanship.
- 1.02. Manufacturer will replace for the Purchaser any part or parts found, upon examination at one of its factories, to be defective under normal use and service due to defects in material or workmanship.
- 1.03. This limited warranty does not apply to any part of the goods which has been subjected to improper or abnormal use, negligence, alteration, modification, or accident, damaged due to lack of maintenance or use of wrong fuel, oil, or lubricants, or which has served its normal life. This limited warranty does not apply to any part of any internal combustion engine, or expendable items such as blades, shields, guards, or pneumatic tires except as specifically found in your Operator's Manual.
- 1.04. Except as provided herein, no employee, agent, Dealer, or other person is authorized to give any warranties of any nature on behalf of Manufacturer.

### 2. REMEDIES AND PROCEDURES.

- 2.01. This limited warranty is not effective unless the Purchaser returns the Registration and Warranty Form to Manufacturer within 30 days of purchase.
- 2.02. Purchaser claims must be made in writing to the Authorized Dealer ("Dealer") from whom Purchaser purchased the goods or an approved Authorized Dealer ("Dealer") within 30 days after Purchaser learns of the facts on which the claim is based.
- 2.03. Purchaser is responsible for returning the goods in question to the Dealer.
- 2.04. If after examining the goods and/or parts in question, Manufacturer finds them to be defective under normal use and service due to defects in material or workmanship, Manufacturer will:
  - (a) Repair or replace the defective goods or part(s) or
  - (b) Reimburse Purchaser for the cost of the part(s) and reasonable labor charges (as determined by Manufacturer) if Purchaser paid for the repair and/or replacement prior to the final determination of applicability of the warranty by Manufacturer.The choice of remedy shall belong to Manufacturer.
- 2.05. Purchaser is responsible for any labor charges exceeding a reasonable amount as determined by Manufacturer and for returning the goods to the Dealer, whether or not the claim is approved. Purchaser is responsible for the transportation cost for the goods or part(s) from the Dealer to the designated factory.

### 3. LIMITATION OF LIABILITY.

- 3.01. MANUFACTURER DISCLAIMS ANY EXPRESS (EXCEPT AS SET FORTH HEREIN) AND IMPLIED WARRANTIES WITH RESPECT TO THE GOODS INCLUDING, BUT NOT LIMITED TO, MERCHANTABILITY AND FITNESS FOR A PARTICULAR PURPOSE.
- 3.02. MANUFACTURER MAKES NO WARRANTY AS TO THE DESIGN, CAPABILITY, CAPACITY, OR SUITABILITY FOR USE OF THE GOODS.
- 3.03. EXCEPT AS PROVIDED HEREIN, MANUFACTURER SHALL HAVE NO LIABILITY OR RESPONSIBILITY TO PURCHASER OR ANY OTHER PERSON OR ENTITY WITH RESPECT TO ANY LIABILITY, LOSS, OR DAMAGE CAUSED OR ALLEGED TO BE CAUSED DIRECTLY OR INDIRECTLY BY THE GOODS INCLUDING, BUT NOT LIMITED TO, ANY INDIRECT, SPECIAL, CONSEQUENTIAL, OR INCIDENTAL DAMAGES RESULTING FROM THE USE OR OPERATION OF THE GOODS OR ANY BREACH OF THIS WARRANTY. NOTWITHSTANDING THE ABOVE LIMITATIONS AND WARRANTIES, MANUFACTURER'S LIABILITY HEREUNDER FOR DAMAGES INCURRED BY PURCHASER OR OTHERS SHALL NOT EXCEED THE PRICE OF THE GOODS.
- 3.04. NO ACTION ARISING OUT OF ANY CLAIMED BREACH OF THIS WARRANTY OR TRANSACTIONS UNDER THIS WARRANTY MAY BE BROUGHT MORE THAN TWO (2) YEARS AFTER THE CAUSE OF ACTION HAS OCCURRED.

### 4. MISCELLANEOUS.

- 4.01. Proper Venue for any lawsuits arising from or related to this limited warranty shall be only in Guadalupe County, Texas.
- 4.02. Manufacturer may waive compliance with any of the terms of this limited warranty, but no waiver of any terms shall be deemed to be a waiver of any other term.
- 4.03. If any provision of this limited warranty shall violate any applicable law and is held to be unenforceable, then the invalidity of such provision shall not invalidate any other provisions herein.
- 4.04. Applicable law may provide rights and benefits to purchaser in addition to those provided herein.

### KEEP FOR YOUR RECORDS

ATTENTION: Purchaser should fill in the blanks below for his reference when buying repair parts and/or for proper machine identification when applying for warranty.

Servis-Rhino Implement Model \_\_\_\_\_ Serial Number \_\_\_\_\_

Date Purchased \_\_\_\_\_ Dealer \_\_\_\_\_

ATTENTION:  
READ YOUR OPERATOR'S MANUAL

**RHINO®**  
1020 S. Sangamon Ave.  
Gibson City, IL 60936  
800-446-5158  
Email: parts@servis-rhino.com





## TO THE OWNER/OPERATOR/DEALER

To keep your implement running efficiently and safely, read your manual thoroughly and follow these directions and the Safety Messages in this Manual. The Table of Contents clearly identifies each section where you can easily find the information you need.

The OCCUPATIONAL SAFETY AND HEALTH ACT (1928.51 Subpart C) makes these minimum safety requirements of tractor operators:

### REQUIRED OF THE OWNER:

1. Provide a Roll-Over-Protective Structure that meets the requirements of this Standard; and
2. Provide Seatbelts that meet the requirements of this paragraph of this Standard and SAE J4C; and
3. Ensure that each employee uses such Seatbelt while the tractor is moving; and
4. Ensure that each employee tightens the Seatbelt sufficiently to confine the employee to the protected area provided by the ROPS.

### REQUIRED OF THE OPERATOR

1. Securely fasten seatbelt if the tractor has a ROPS.
2. Where possible, avoid operating the tractor near ditches, embankments, and holes.
3. Reduce speed when turning, crossing slopes, and on rough, slick, or muddy surfaces.
4. Stay off slopes too steep for safe operation.
5. Watch where you are going - especially at row ends, on roads, and around trees.
6. Do not permit others to ride.
7. Operate the tractor smoothly - no jerky turns, starts, or stops.
8. Hitch only to the drawbar and hitch points recommended by the tractor manufacturer.
9. When the tractor is stopped, set brakes securely and use park lock, if available.



**Keep children away from danger all day, every day...**



**Equip tractors with rollover protection (ROPS) and keep all machinery guards in place...**



**Please work, drive, play and live each day with care and concern for your safety and that of your family and fellow citizens.**

