



SE10A

Rotary Cutter

Rev 04-12

S/N 12987-Current

Part No. 00780267P

PART'S MANUAL

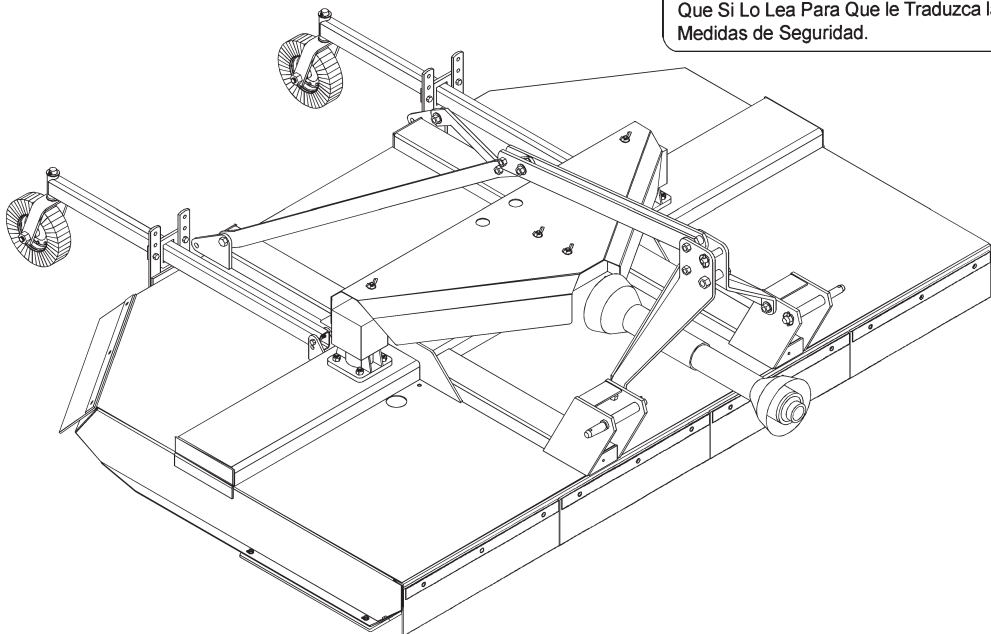


An Operator's Manual was shipped with the equipment in the Manual Canister. This Operator's Manual is an integral part of the safe operation of this machine and must be maintained with the unit at all times. **READ, UNDERSTAND, and FOLLOW** the Safety and Operation Instructions contained in this manual before operating the equipment. If the Operator's Manual is not with the equipment, contact your dealer or Servis-Rhino (800-446-5158) to obtain a Free copy before operating the equipment.

ATENCIÓN!

LEA EL INSTRUCTIVO

Si No Lee Ingles, Pida Ayuda a Alguien Que Si Lo Lea Para Que le Traduzca las Medidas de Seguridad.



RHINO[®]

1020 S. Sangamon Ave.
Gibson City, IL 60936
800-446-5158

Email: parts@servis-rhino.com

© 2007 Alamo Group Inc.



TO THE OWNER/OPERATOR/DEALER

All implements with moving parts are potentially hazardous. There is no substitute for a cautious, safe-minded operator who recognizes the potential hazards and follows reasonable safety practices. The manufacturer has designed this implement to be used with all its safety equipment properly attached to minimize the chance of accidents.

BEFORE YOU START!! Read the safety messages on the implement and shown in your manual.
Observe the rules of safety and common sense!



DANGER

FAILING TO FOLLOW SAFETY MESSAGES AND OPERATING INSTRUCTIONS CAN CAUSE SERIOUS BODILY INJURY OR EVEN DEATH TO OPERATOR AND OTHERS IN THE AREA.

<p>1.</p>	<p>2. NO RIDERS, NO CHILDREN OPERATORS</p>	<p>3. USE SAFETY SHOES, HARD HAT, SAFETY GLASSES, SEAT BELTS, & ROPS</p>	<p>4. BLOCK UP SECURELY BEFORE WORKING UNDER.</p>
-----------	--	--	---

- Study and understand Operator's Manuals, Safety Signs, and Instructional Decals for tractor & flail mower to prevent misuse, abuse, & accidents. Practice before operating mower in a confined area or near passersby.
 - Learn how to stop engine suddenly in an emergency. Be alert for passersby and especially children.
- Allow no children on or near implement or tractor. Allow no riders on tractor or implement. Falling off can cause serious injury or death from being runover by tractor or mower or contact with Flail Mower Blades.
- Operate only with tractor having Roll-Over Protective Structure (ROPS) and with seatbelt fastened securely and snugly to prevent injury and possible death from falling off or tractor overturn. Personal Protective Equipment such as Hard Hat, Safety Glasses, Safety Shoes, and Ear Plugs are recommended.
- Block up or support raised machine and all lifted components securely before putting hands or feet under or working underneath any lifted component to prevent crushing injury or death from sudden dropping or inadvertent operation of controls. Make certain that area is clear before lowering or folding.
- Before transporting, put Lift Lever in detent or full-lift position. Install Transport Safety Devices securely on folding implements. Slow down when turning and on hillsides.
 - Install **Restrictor in folding circuit to slow down lowering and unfolding if action is faster than is desirable.
- Make certain that SMV sign, Warning Lights, and Reflectors are clearly visible. Follow local traffic codes.
- Never operate with Flail Mower or Folding Section raised if passersby, bystanders or traffic are in the area to reduce possibility of injury or death from objects thrown by Blades under Shields or implement structure.
- Before dismounting, secure flail mower in transport position or lower to ground.
 - Put tractor in park or set brake, disengage PTO, stop engine, remove key, and wait until noise of rotation has ceased to prevent entanglement in rotating parts which may cause injury or death.
 - Never mount or dismount a moving vehicle. Crushing from runover may cause injury or death.

<p>5. TRANSPORT SAFELY, LOCK UP.</p>	<p>6. USE SMV, LIGHTS, & REFLECTORS.</p>	<p>7. DO NOT OPERATE WITH MOWER OR WING RAISED.</p>	<p>8. DO NOT MOUNT OR DISMOUNT WHILE MOVING.</p>
--------------------------------------	--	---	--

Read and understand the complete Warranty Statement found in this Manual. Fill out the Warranty Registration Form in full and return it within 30 Days. Make certain the Serial Number of the Machine is recorded on the Warranty Card and on the Warranty Form that you retain. The use of "will-fit" parts will void your warranty and can cause catastrophic failure with possible injury or death.

WARRANTY INFORMATION

002369

PARTS SECTION

PARTS ORDERING GUIDE

The following instructions are offered to help eliminate needless delay and error in processing purchase orders for the equipment in this section.

1. The Parts Section is prepared in logical sequence and grouping of parts that belong to the basic machine featured in this manual. Part Numbers and Descriptions are given to help locate the parts and quantities required.
2. The Purchase Order must include the name and address of the person or organization ordering the parts, who should be charged, and if possible, the serial number of the machine for which the parts are ordered.
3. The Purchase Order must clearly list the quantity of each part, the complete and correct part number (be sure to include all periods), and the basic name of the part.
4. The Manufacturer reserves the right to substitute parts where applicable.
5. Some parts are unlisted items which are special production items not normally stocked and are subject to special handling. Request a quotation for such parts before sending a Purchase Order.
6. The Manufacturer reserves the right to change prices without prior notice.

NOTE: Please refer to The Safety Section in the front of this Manual for the proper Part Number when ordering Replacement Safety Decals.



For maximum safety and to guarantee optimum product reliability, always use genuine Servis-Rhino Parts. The use of inferior replacement parts may cause premature or catastrophic failure which could result in serious injury or death. Direct any questions regarding parts to:



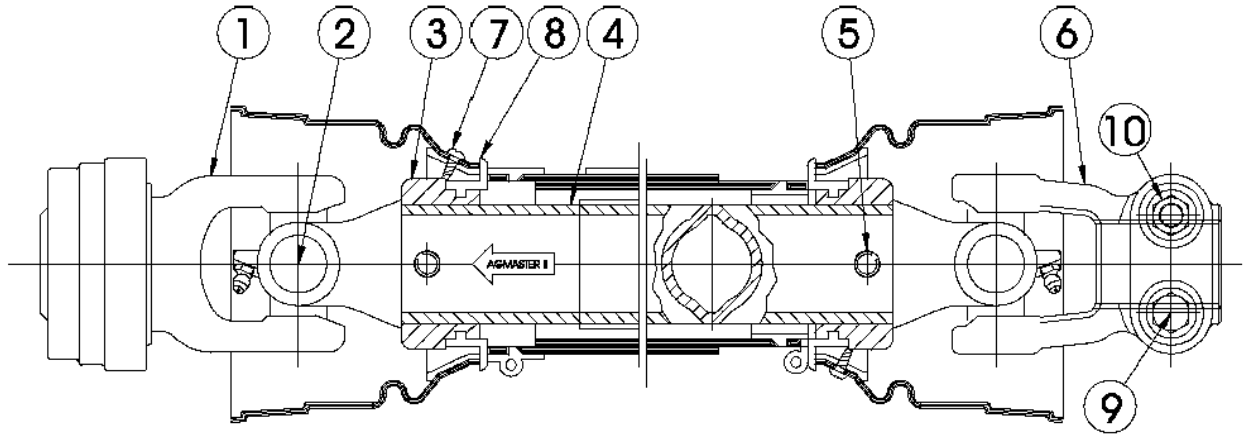
RHINO®
1020 S. Sangamon Ave.
Gibson City, IL 60936
800-446-5158
Email: parts@servis-rhino.com

PART NAME INDEX

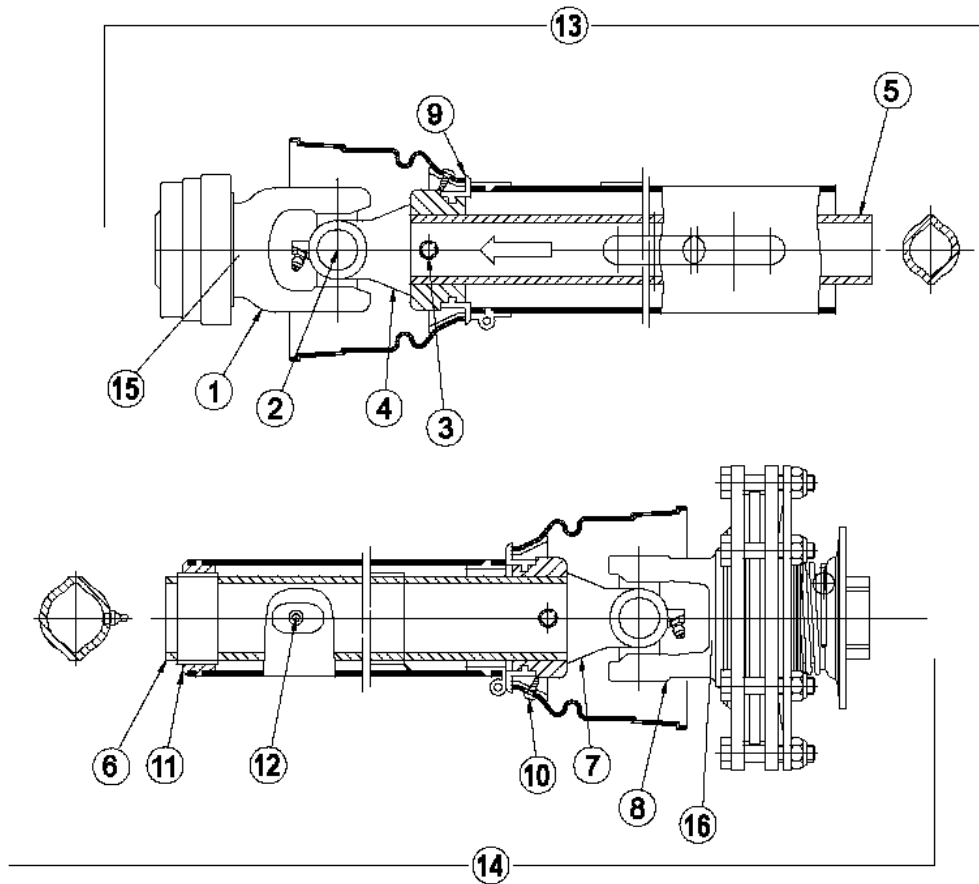
A-FRAME ASSEMBLY Rev 08-07	9
AXLE & CONTROL ROD ASSEMBLY - PULL TYPE S/N 13135 -BELOW Rev 08-07	22
AXLE & CONTROL ROD ASSEMBLY - PULL TYPE S/N 13136 -CURRENT Rev 08-07	21
AXLE ATTACHMENT -SEMI-MOUNT Rev 03-07	42
BLADE PAN ASSEMBLY	20
CASTER FORK & WHEEL ASSEMBLY S/N 12908 -CURRENT Pub 04-05	27
CHAIN GUARD ASSEMBLY - FRONT	40
CHAIN GUARD ASSEMBLY - REAR.....	41
CUTTING HEAD ASSEMBLY Rev 08-05.....	12
CYLINDER, HYDRAULIC LIFT P/N 8727A.....	24
DEFLECTOR ASSEMBLY - FRONT	38
DEFLECTOR ASSEMBLY - REAR	39
DRIVELINE - LIFT TYPE & SEMIMOUNT 540 & 1000RPM July 2001 -Current Pub 04-05	5
DRIVELINE - PULL TYPE 540 RPM Aug 2001 -Current Pub 04-05.....	4
DRIVELINE-OUTER S/N12870 -BELOW Pub 02-05	19
DRIVELINE-OUTER S/N12871 -CURRENT Pub 02-05	18
FOAM FILLED USED AIRCRAFT TIRE.....	32
GEARBOX ASSEMBLY - DIVIDER (540 RPM) Rev 07-05	16
GEARBOX ASSEMBLY-OUTER S/N 12625- ABOVE.....	14
JACKSHAFT - PULL TYPE 00775429 July 2001 -Current Pub 04-05	7
JACKSHAFT SUPPORT - PULL TYPE.....	8
LIFT ARRANGEMENTS - Rev 03-06.....	23
SAFETY DECAL SHEETS	43
SHIELD ASSEMBLY S/N 12986 -Below Pub 07-05	34
SHIELD ASSEMBLY S/N 12987 -Current Pub 07-05	33
SLIP CLUTCH ASSEMBLY 00775419 -Current Pub 4-05.....	6
SPRING SHOCK ASSEMBLY (OPTIONAL)	25
TAIL WHEEL HUB ASSEMBLY S/N 12908 -CURRENT Pub 04-05	26
TAILWHEEL ASSEMBLY - LIFT TYPE S/N 12907 -BELOW Pub 04-05	28
TIRE & WHEEL ASSEMBLY -LIFT TYPE S/N 12907 -BELOW Pub 04-05	29
TIRE & WHEEL OPTIONS - PULL TYPE	36
TONGUE ASSEMBLY Rev 08-07	10
WHEEL HUB ASSEMBLY - PULL TYPE S/N 13135 -BELOW Rev 08-07	31
WHEEL HUB ASSEMBLY - PULL TYPE S/N 13136 -CURRENT Rev 08-07.....	30

DRIVELINE - PULL TYPE 540 RPM Aug 2001 -Current Pub 04-05

Order replacement parts from this page if the profile of your driveline is lemon shaped.



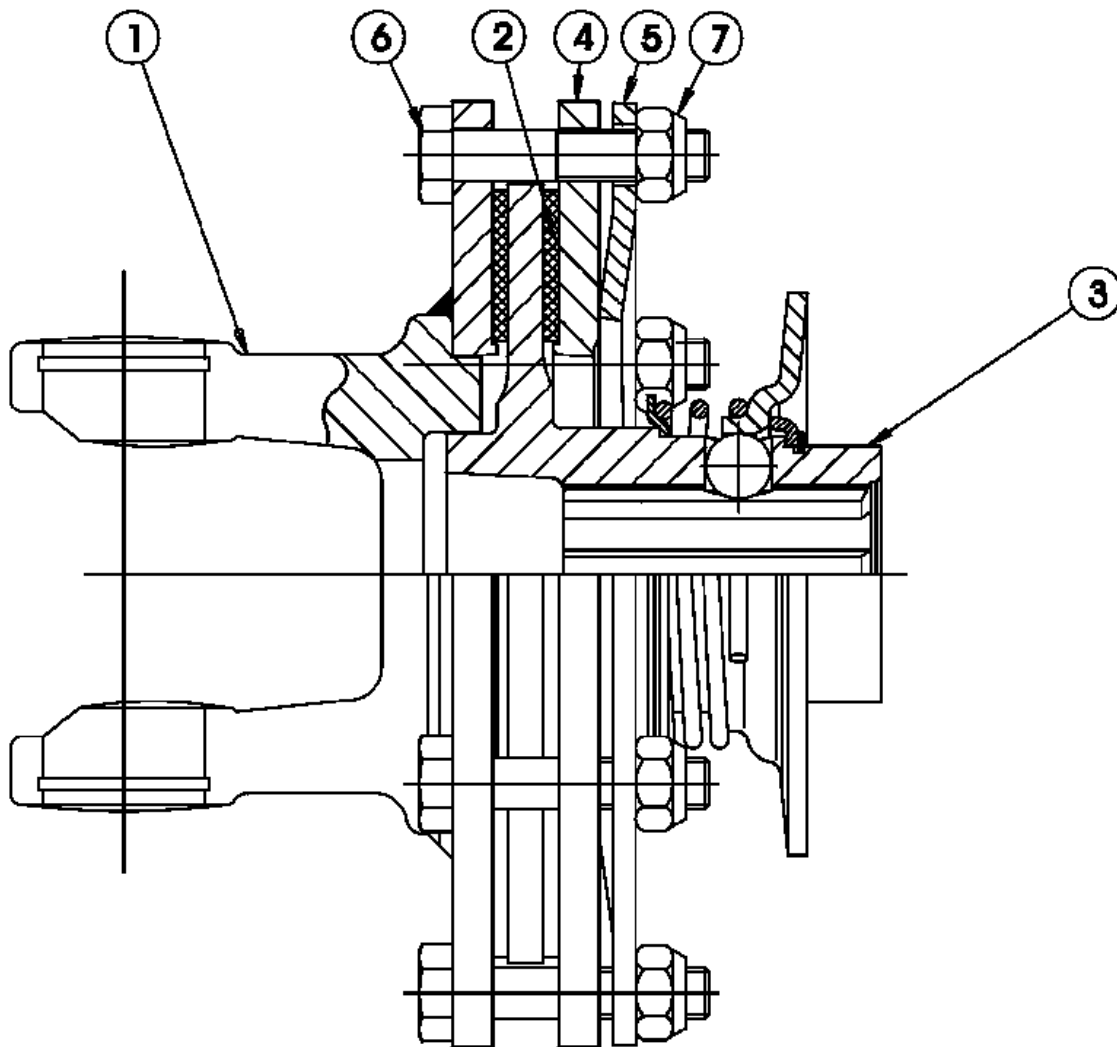
ITEM	PART NO.	QTY.	DESCRIPTION
	00775351	-	DRIVELINE MAIN 540 EQ ANGLE
1	00775353	1	YOKE 1-3/8-6 SPLINE ASGE
2	W279R	2	CROSS REPAIR KIT, CTR
3	00775318	1	YOKE INBOARD 2A
4	00775354	1	OUTER PROFILE 2A
5	8384	2	SPRING PIN 10MM X 90MM
6	00775316	1	YOKE 1-3/4-20 SPL I.C.
7	4797	1	USE 00759217
8	8393	2	BEARING RING
9	00775384	2	BOLT P1.75 M12 X 60
10	00775327	1	NUT P1.75 M12
	00775355	1	OUTER SHIELD HALF
	00775356	1	INNER SHIELD HALF
	00767954	1	YOKE.Q.D.KIT - PLASTIC



Order replacement parts from this page if the profile of your driveline is lemon shaped.

ITEM	PART NO.	PART NO.	QTY.	DESCRIPTION
	00775412			DRIVELINE 540 RPM
	▣	00775413		DRIVELINE 1000 RPM
1	00775353	00761762	1	YOKE 1-3/8-6 SPLINE ASGE
2	W279R	W279R	2	CROSS REPAIR KIT, CTR
3	8384	8384	2	SPRING PIN 10MM X 90MM
4	00775317	00775317	1	YOKE INBOARD 1B
5	8946	8946	1	PROFILE INNER 780MM 30.709
6	00775418	00775418	1	TUBE & SLEEVE
7	00775318	00775318	1	YOKE INBOARD 2A
8	00775419	00775419	1	FRICTION CLUTCH
9	8393	8393	2	BEARING RING
10	4797	4797	2	USE 00759217
11	8974	8974	1	SUPPORT BEARING
12	1416601	1416601	1	ZERK
13	00775420	00775420	1	SHIELD, OUTER HALF
14	00775421	00775421	1	SHIELD, INNER HALF
15	00767954	00767953	1	YOKE.Q.D.KIT - PLASTIC
16	8371	8371	1	FLANGE QD KIT

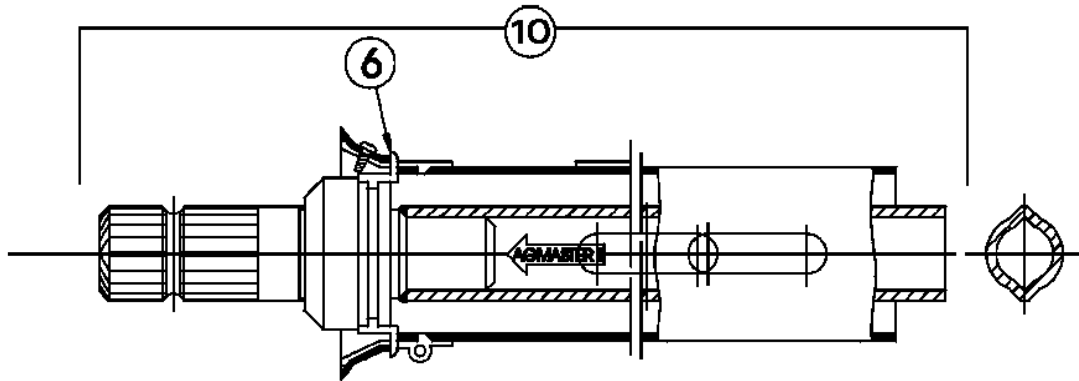
SLIP CLUTCH ASSEMBLY 00775419 -Current Pub 4-05



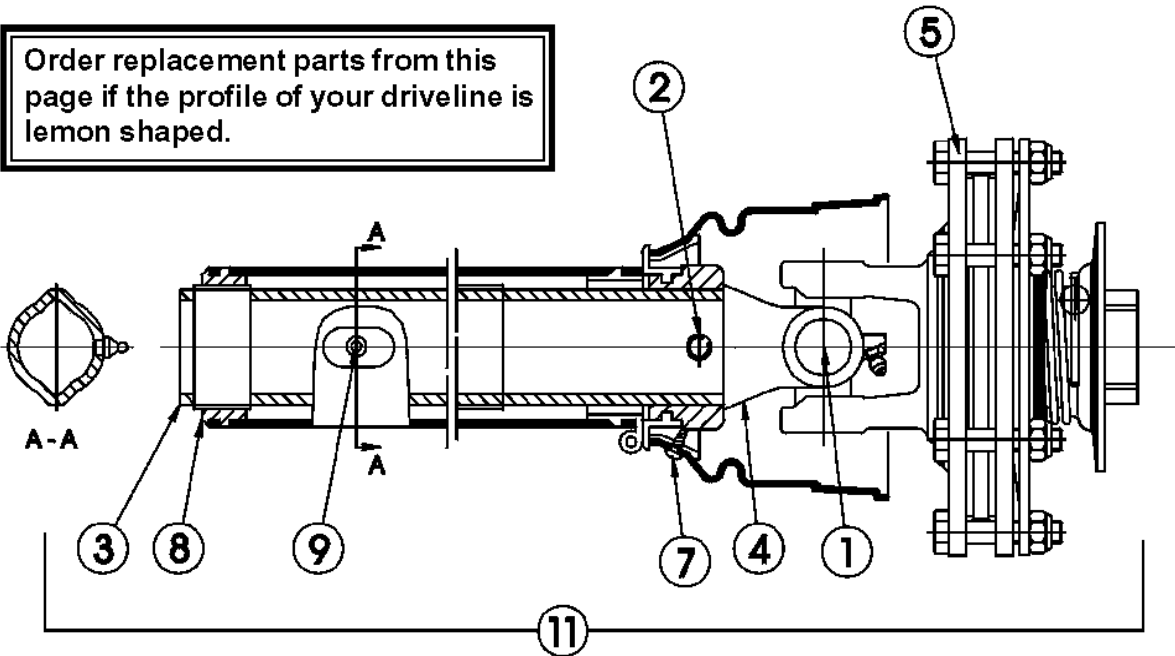
**USED ON DRIVELINE
P/N 00775412 & P/N 00775413
JACKSHAFT P/N 00775429**

ITEM	PART NO.	QTY.	DESCRIPTION
	00775419	-	FRICTION CLUTCH
1	00775321	1	YOKE, FLANGE
2	8366	2	RING, CLUTCH LINING
3	00775368	1	HUB 1 3/8-6-QD
4	00775323	1	PLATE, THRUST
5	00775324	1	SPRING, BELLEVILLE
6	00775325	6	HEX BOLT M10 X 50
7	00775326	6	HEX LOCKNUT M10
8	8371	1	FLANGE QD KIT

JACKSHAFT - PULL TYPE 00775429 July 2001 -Current Pub 04-05

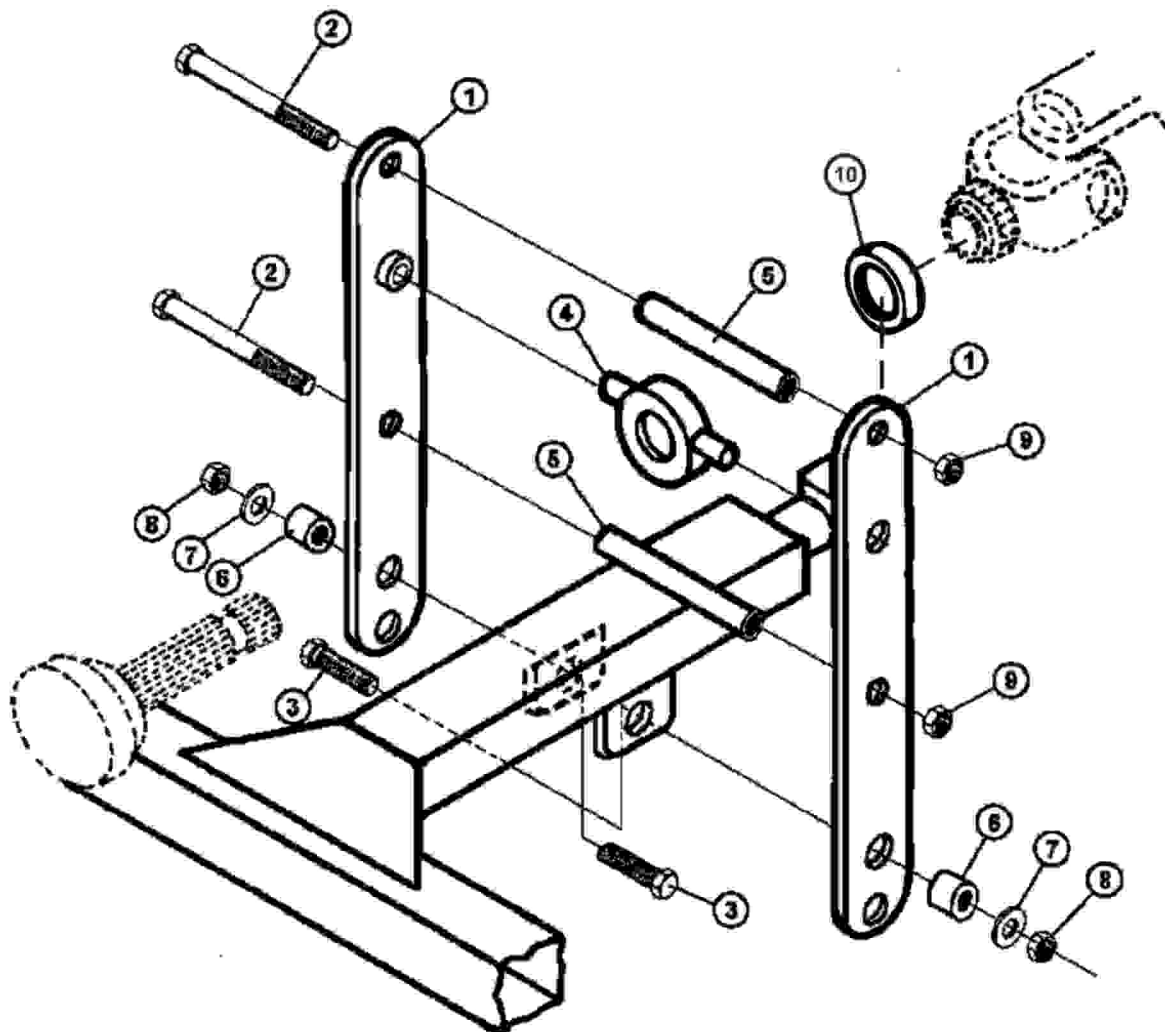


Order replacement parts from this page if the profile of your driveline is lemon shaped.



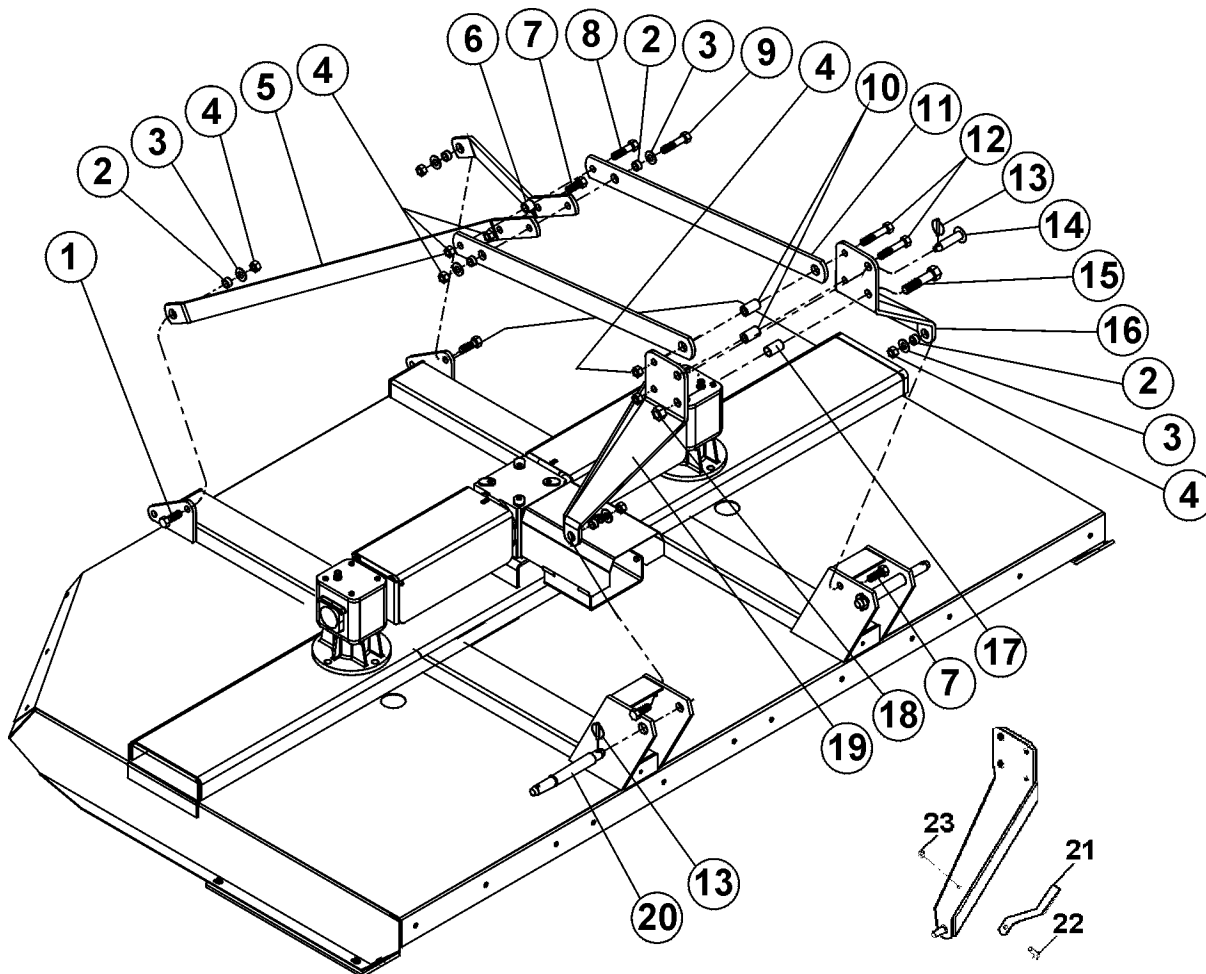
ITEM	PART NO.	QTY.	DESCRIPTION
	00775429	-	DRIVELINE, 540 RPM SE8
1	W279R	1	CROSS REPAIR KIT, CTR
2	8384	1	SPRING PIN 10MM X 90MM
3	00775432	1	PROFILE & SLEEVE
4	00775318	1	YOKE INBOARD 2A
5	00775419	1	FRICITION CLUTCH
6	8393	2	BEARING RING
7	4797	2	USE 00759217
8	8974	1	SUPPORT BEARING
9	1416601	1	ZERK
10	00776264	1	OUTER SHIELD HALF
11	00775434	1	INNER SHIELD HALF
12	8371	1	FLANGE QD KIT

JACKSHAFT SUPPORT - PULL TYPE



ITEM	PART NO.	QTY.	DESCRIPTION
1	00760944	2	WLDMT-JACKSHAFT BRG SUPT
2	02963243	2	HEXB 1/2 NC 7 PL5
3	02845500	2	HEXB 5/8 NC 2 PL5
4	00759100	1	BEARING&HOUSING ASSY
5	00760943	2	PIPE-SPACER
6	0811180520	2	BUSHING 7/8 X .635 X 21/32
7	00756077	2	WASHER,5/8 HARDENED
8	00695100	2	LOCKNUT
9	00001800	2	LOCKNUT
10	00768652	1	SPACER, TUBE

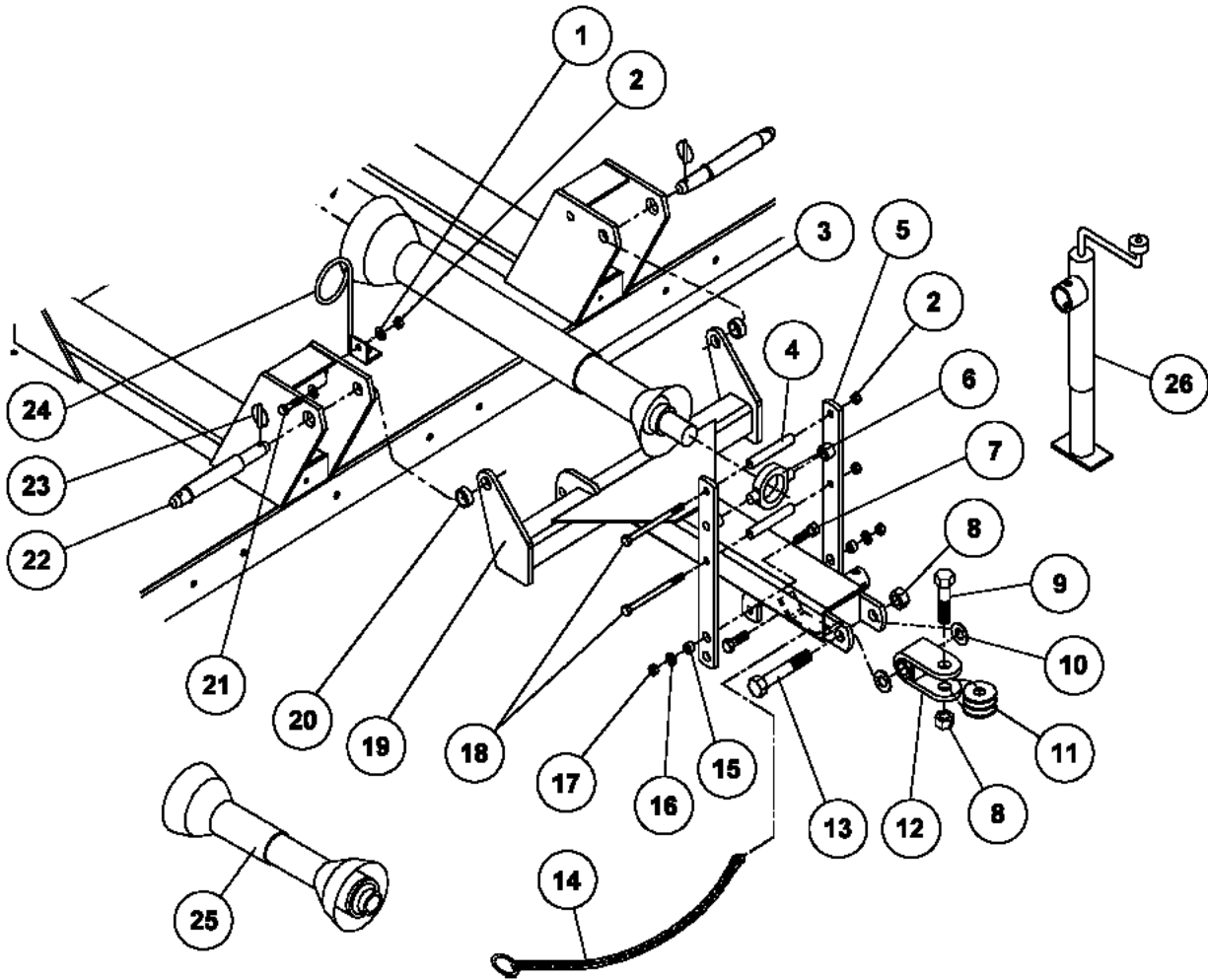
A-FRAME ASSEMBLY Rev 08-07



ITEM	PART NO.	QTY.	DESCRIPTION
1	02959391	2	HHCS 3/4 NC 2-1/4 PL5
2	0758550070	6	BSHG
3	5312316	6	WASHER (SPECIAL)
4	00037200	9	LOCKNUT
5	00771803	2	BRACE, REAR A-FRAME SE10
6	00761267	1	SPACER
7	02918600	3	HEXB 3/4-10UNC 2 PL8
8	00007800	1	BOLT
9	02881000	1	HHCS 3/4 NC 3-1/2 PL5
10	0758550030	2	SPACER
11	00771820	2	BRACE, A-FRAME SE10
12	00003300	2	BOLT
13	2196	3	CLIP (LYNCH PIN), 13/32 DIA.
14	3730110	1	N/A-ADD M-MOTT,W-M&W
15	7AH5161436	1	HHCS 1-14 4-1/2 PL
16	0758550020	1	WLDMT, A FRAME LEG - LEFT
17	0758550031	1	ORDER 165 MIN HT BUSHING
18	5JRC16140	1	LOCKNUT 1 -14 TLDT GC ZP
19	0758550010	1	WLDMT, A FRAME LEG - RIGHT
20	69141	2	PIN, HITCH CAT II & III
21	00778651	1	DRIVELINE HOLDER BRACKET
22	00748823	1	HHCS 1/2-13UNC 1-1/2 PL5
23	00001800	1	LOCKNUT TLM 1/2 NC PLB

SE10A (July-05) S/N 12987 -Current Rev 08-07

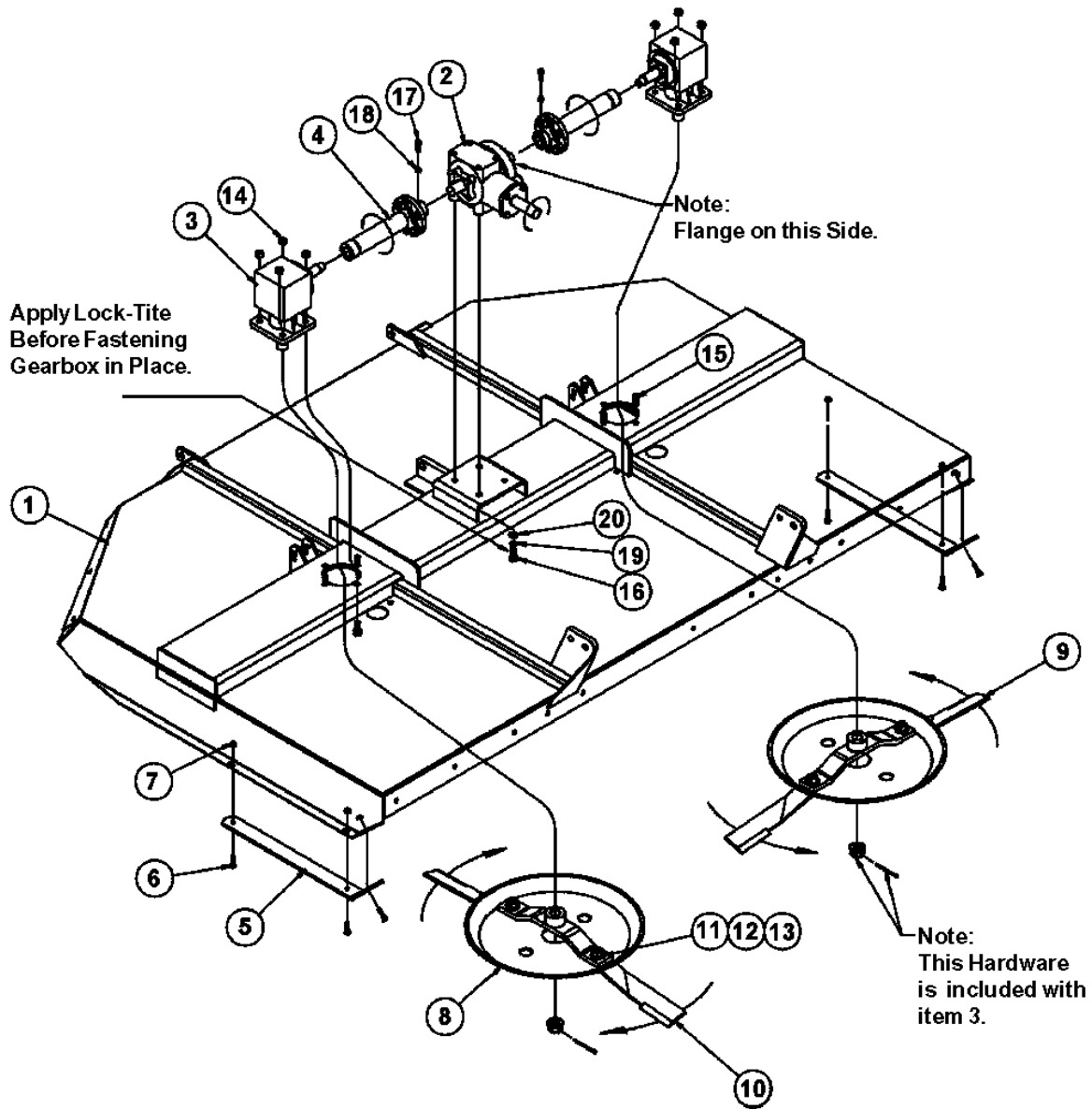
TONGUE ASSEMBLY Rev 08-07



TONGUE ASSEMBLY Rev 08-07

ITEM	PART NO.	QTY.	DESCRIPTION
1	00002700	2	FLATWASHER
2	00001800	3	LOCKNUT
3	00775429	1	DRIVELINE, 540 RPM SE8
4	00760943	2	PIPE-SPACER
5	00760944	2	WLDMT-JACKSHAFT BRG SUPT
6	00759100	1	BEARING&HOUSING ASSY
7	02845500	2	HEXB 5/8 NC 2 PL5
8	02030300	2	NUT TOPLOCK 1 NC PLB
9	02712500	1	HHCS 1 NC 4 GR8
10	00757478	2	SPRING WASHER
11	00759275	3	WASHER-HITCH CLEVIS
12	00748807	1	CLEVIS WELDMENT
13	00755305	1	BOLT 1-8UNC-6 LG GRD 8
14	00764515	1	CHAIN-SAFETY TOW-6000 LB. CAP.
15	0811180520	2	BUSHING 7/8 X .635 X 21/32
16	00756077	2	WASHER,5/8 HARDENED
17	00695100	2	LOCKNUT
18	02963243	2	HEXB 1/2 NC 7 PL5
19	00761968	1	WLDMT TONGUE
20	00771753	2	SPACER, 1/2 TONGUE
21	00749130	1	HHCS 1/2-13UNC 1-3/4 PL5
22	69141	2	PIN, HITCH CAT II & III
23	2196	2	CLIP (LYNCH PIN), 13/32 DIA.
24	8343	1	HOSE HOLDER ASSY
25	00775351	1	DRIVELINE MAIN 540 EQ ANGLE
26	00772391	1	JACK PARKING 3000LB SIDEWIND

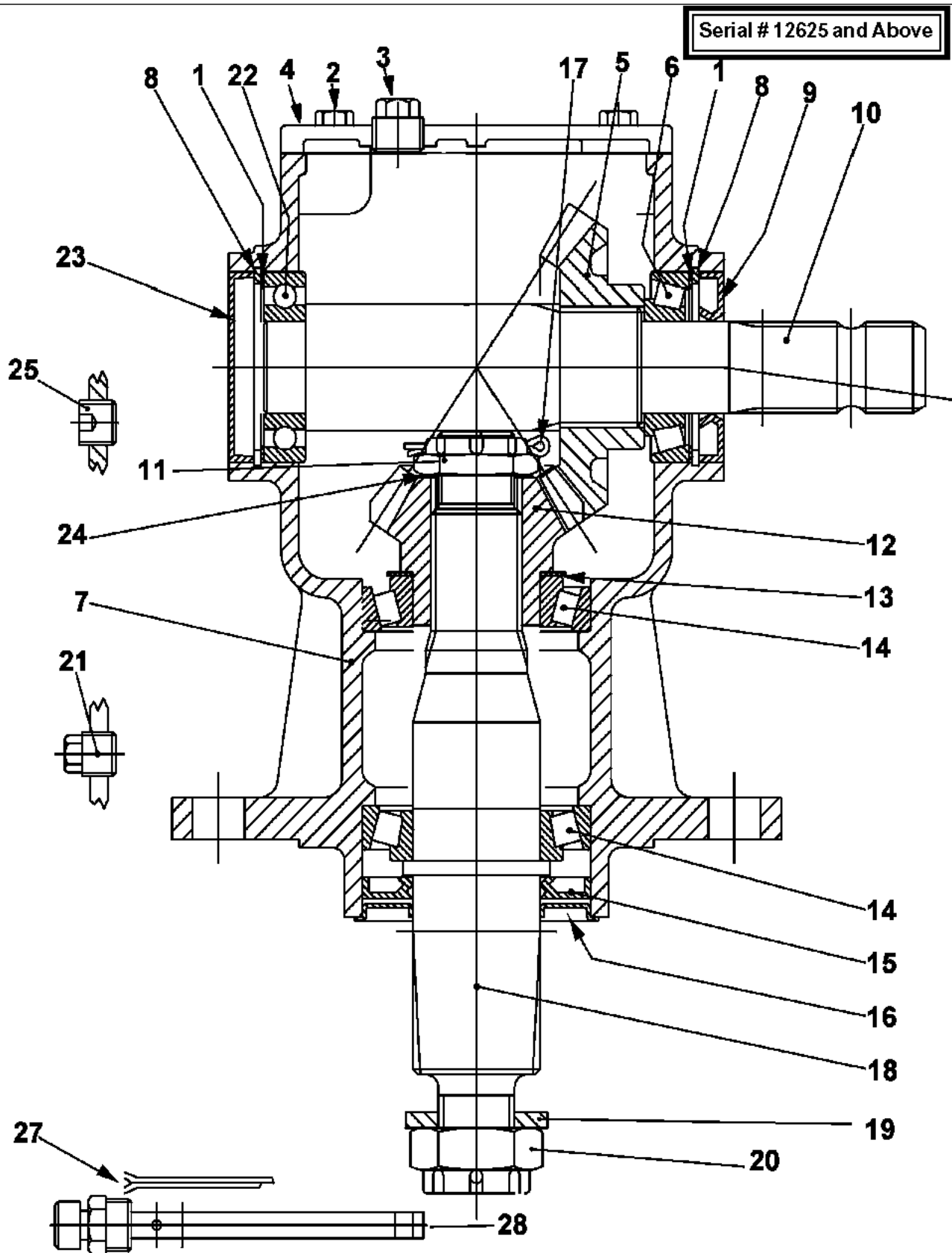
CUTTING HEAD ASSEMBLY Rev 08-05



CUTTING HEAD ASSEMBLY Rev 08-05

ITEM	PART NO.	QTY.	DESCRIPTION
1	00777390	1	WLDMT,DECK SE10A
2	00777389	1	DIVIDERBOX, 1:1.21 SU 540 W/LU
3	00777388	2	GEARBOX, 1-3/8-21 540 W/LUBE
4	00778579	2	ASY-DRIVELINE COUPLER 1-3/8-21
5	0622000001	2	SKID SHOE
6	00748555	6	PLOW #3 3/8 NC 1 PL
7	4528	6	NUT, LOCK 3/8-16 FLG WHIZ
8	00777386	2	WLDMT, BLADEPAN
9	00771702	2	BLADE SUCTION CW
10	00771700	2	BLADE,SUCTION C/CW
11	00761402	4	BLADE BOLT 7/8 DIA X 3 LG
12	00761535	4	WASHER-7/8 STR PLAIN
13	00750226	4	NUT TOPLOCK 7/8 NF PLC
14	00695100	8	NUT
15	02045000	4	HEXB,5/8 NC X 2-1/4 GRD5 ZP
16	02675800	4	HHCS 5/8-11UNC 1-1/2 PL5
17	3167	2	SQSS 3/8-16NC 1 PL
18	00751281	2	NUT 3/8 NC HEX JAMNUT
19	00010300	4	LOCKWASHER
20	00001400	4	FLATWASHER

GEARBOX ASSEMBLY-OUTER S/N 12625- ABOVE

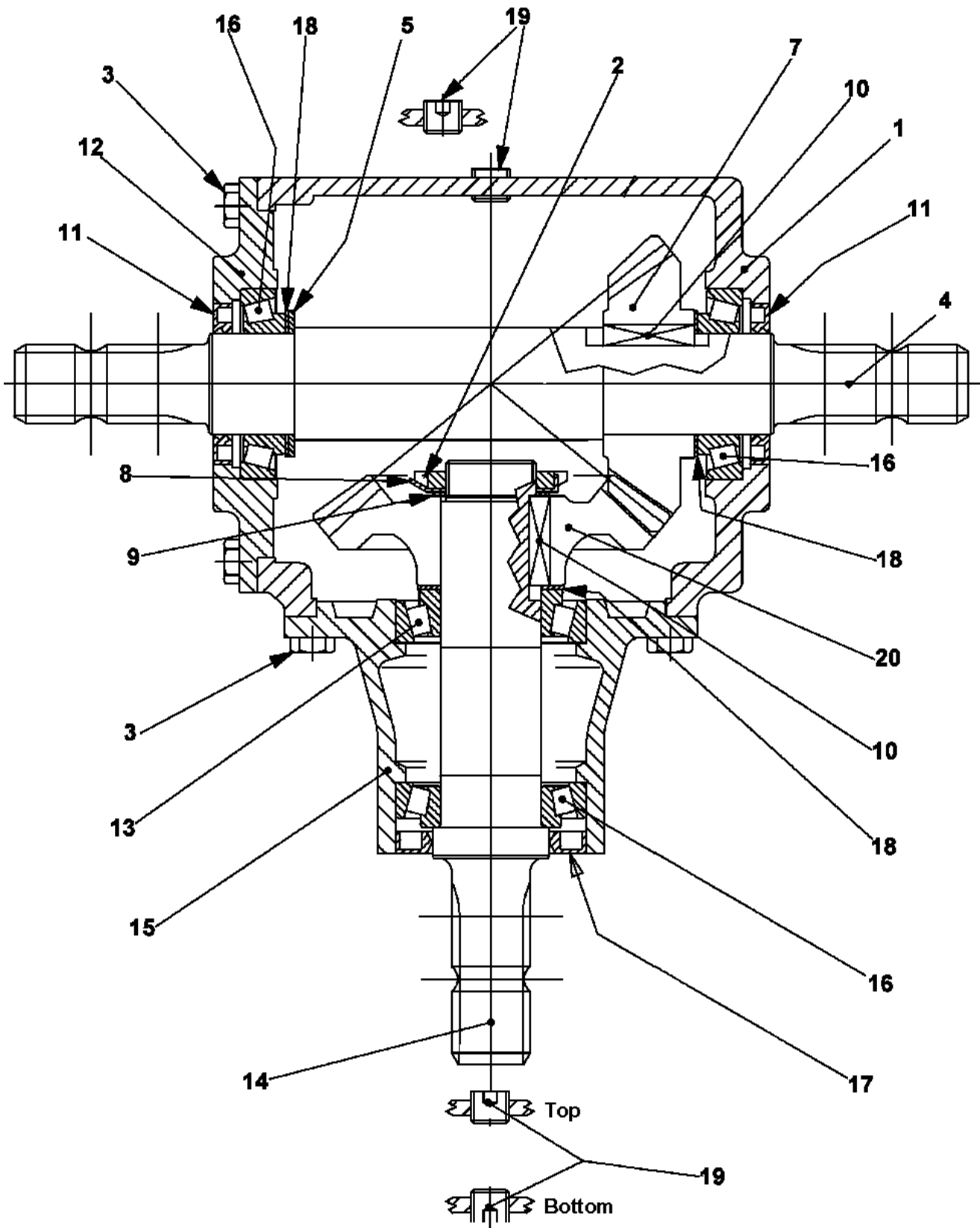


GEARBOX ASSEMBLY-OUTER S/N 12625- ABOVE

ITEM	PART NO.	QTY.	DESCRIPTION
	00777388	-	GEARBOX, 1-3/8-21 540
1	00754761	2	SHIM
2	30149	4	HEX BOLT M8X22,T4A GEAR BOX
3	2716526	1	PLUG,1/2" TAPERED SOLID
4	00777397	1	COVER PLATE
5	00777398	1	GEAR, CROW Z21 M5.7
6	00754757	1	BEARING
7	00777400	1	GEARBOX CASTING AND MACHINING
8	2716532	2	SNAP RING 72 UNI7437
9	00763206	1	SEAL, INPUT SHAFT 35X72X10
10	2716534	1	SHAFT 1 3/8 Z21
11	00758496	1	NUT-METRIC OUTPUT SHAFT M30X1.
12	00777402	1	GEAR, CONIC PIGNON Z14 M5.7
13	00755622	1	SHIM
14	00769938	1	BEARING,TIMKEN 30210
15	00755627	1	OIL SEAL
16	00755626	1	PROTECTIVE SHIELD
17	00755631	1	PIN, COTTER
18	00777404	1	OUTPUT SHAFT
19	00755623	1	WASHER 2.200 OD1.218 1DX.250
20	00755624	1	NUT
21	00755633	1	PLUG,3/8" TAPERED SOLID
22	00564800	1	BEARING
23	2716540	1	CAP PLUG 72 X 10
24	00755638	1	SHIM
25	00753226	1	PLUG
27	00606000	1	COTTER PIN
28	00777407	1	GAS OIL BREATHER LEVEL PLUG
	00765444	1 3/4	QT,ALAMO 000 GEAR LUBE

GEARBOX ASSEMBLY - DIVIDER (540 RPM) Rev 07-05

Serial # 12625 and Above



SE10A (July-05) S/N 12987 -Current Rev 08-07

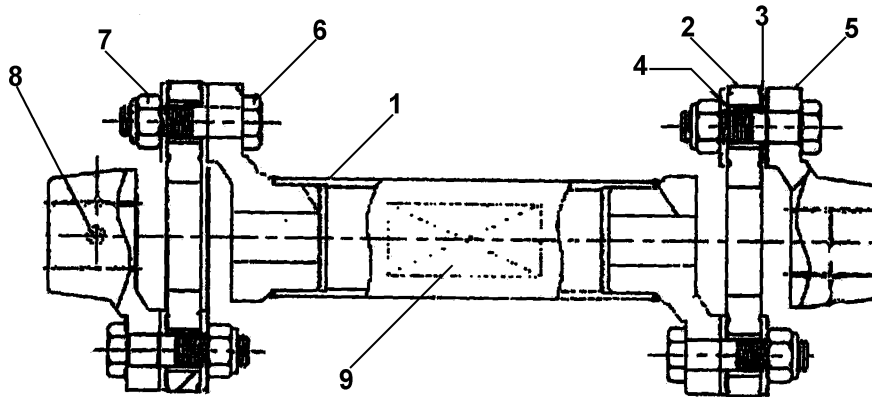
©2007 Alamo Group Inc.

Parts Section - 16

GEARBOX ASSEMBLY - DIVIDER (540 RPM) Rev 07-05

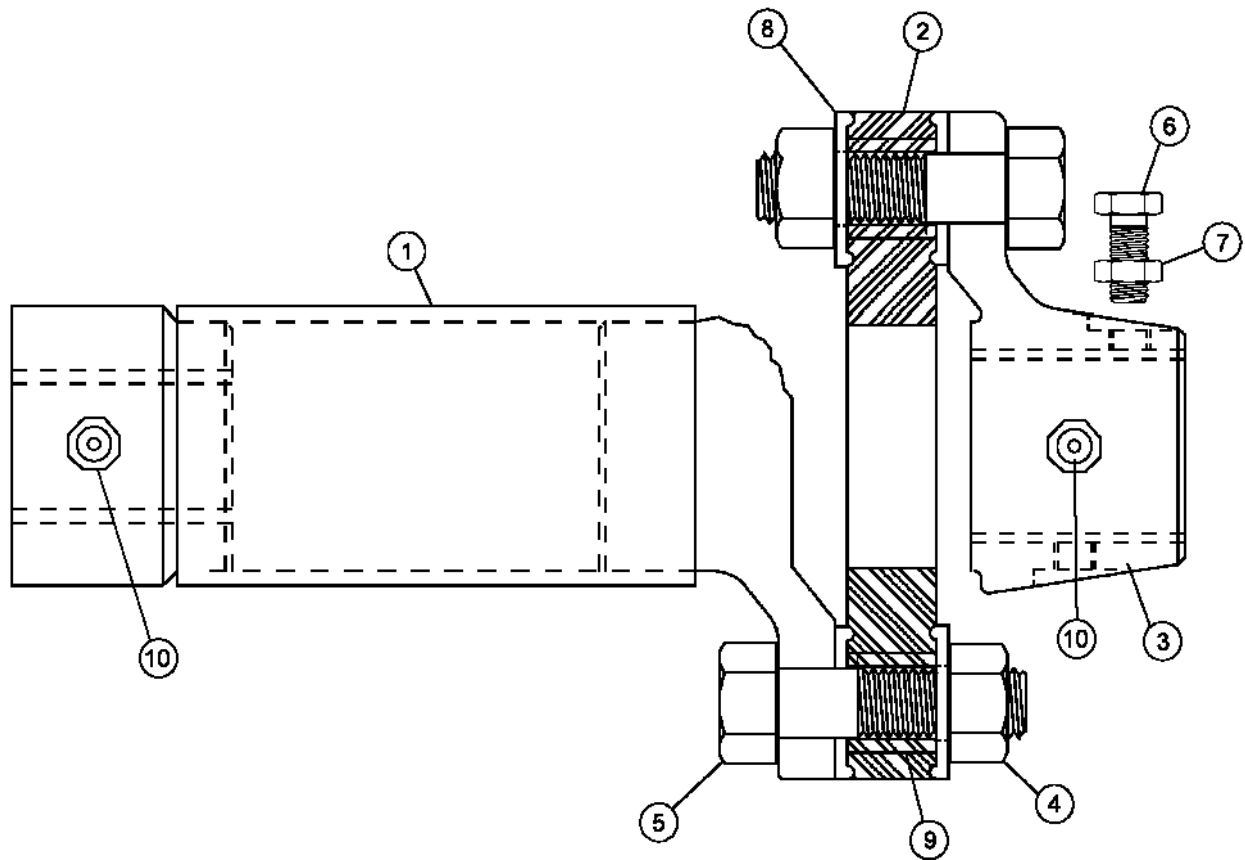
ITEM	PART NO.	QTY.	DESCRIPTION
	00777389	1	DIVIDERBOX, 1:1.21 SU 540
1	00777413	1	CASTING, DIVIDERBOX
2	00758497	1	LOCKNUT&METRIC INPUT SHAFT M40
3	00744338	16	BOLT
4	00777414	1	SHAFT, THROUGH 1-3/8 Z21
5	00755632	1	SHIM 45.3 X 2.5
7	00777415	1	GEAR, PINION Z22.M5.7
8	00758498	1	WASHER-SPRING INPUT 40X62X1.25
9	00777416	1	SHIM 40.3x51.5x1
10	2716553	2	PARALLEL KEY B 14 X 9 X 40
11	00777417	2	DUST LIP 45x72x8
12	00777418	1	COVER PLATE
13	00777419	1	ROLLER BEARING 32209 45x85x
14	00777420	1	SHAFT 1-3/8 Z6
15	00777421	1	EXTENSION
16	00755615	3	BEARING
17	00777423	1	OIL SEAL 52x85x10
18	00753235	1	SHIM
19	00753226	1	PLUG
20	00777424	1	GEAR, CROWN Z27 M5.7
21	2716591	1	VENT PLUG 3/8
	00765444	2 1/ 2qts.	QT,ALAMO 000 GEAR LUBE

DRIVELINE-OUTER S/N12871 -CURRENT Pub 02-05



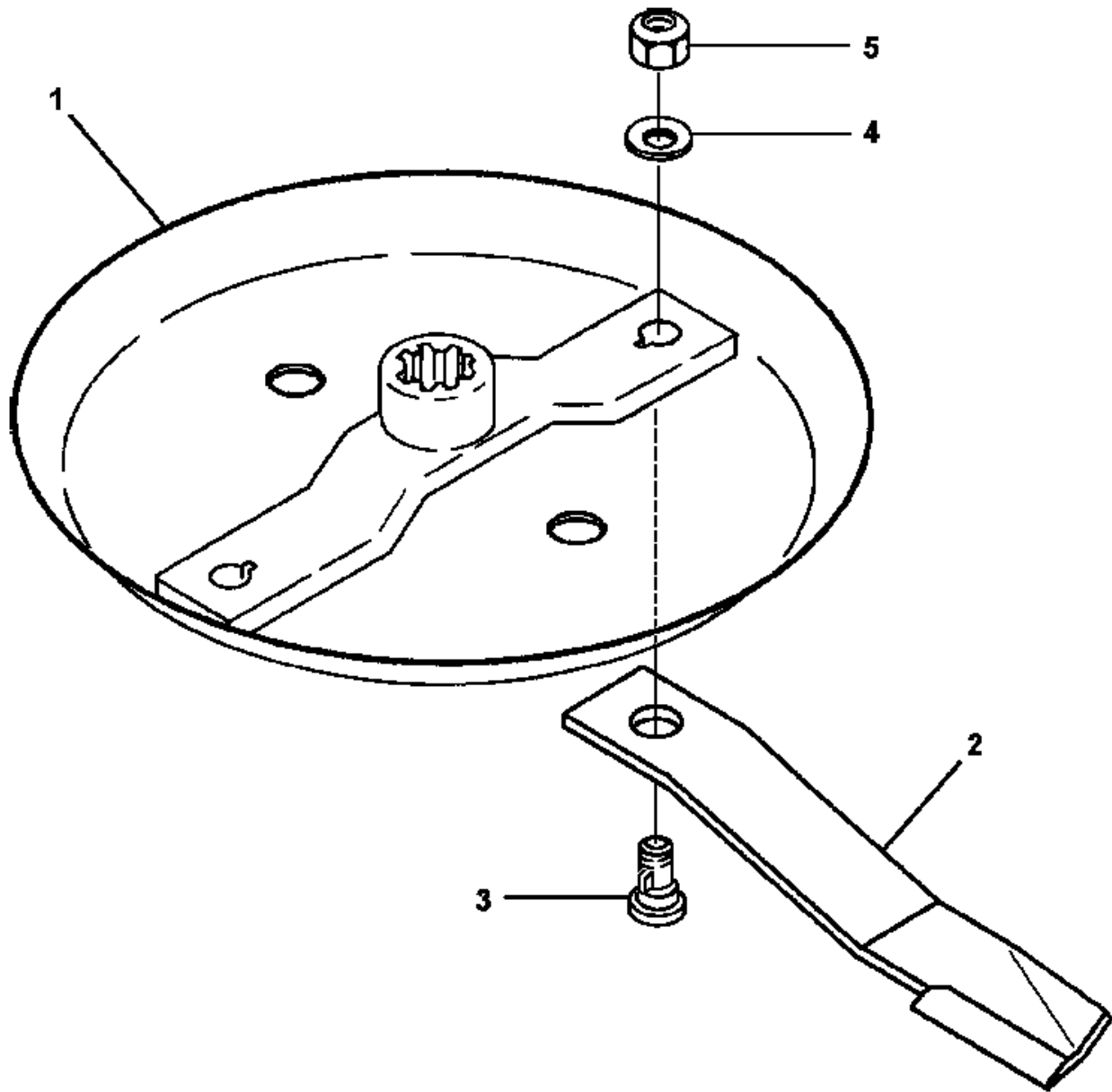
ITEM	PART NO.	QTY.	DESCRIPTION
	00778758	-	DRIVELINE OUTER ASSY
1	00778759	1	DOUBLE FLEX YOKE & TUBE ASSEMBLY
2	00762215	4	DISC,RUBBER (W/O BUSHINGS)
3	00766475A	24	WASHER,BEADED D/L COUPLER
4	00771287	12	BUSHING,RUBBER DISK
5	00758636A	2	SPIDER, W/1-3/8-21 SPLINE SE-8
6	00750952	12	HEXB,5/8NC X 2-1/2,ZP,GRD5
7	00765962	12	NUT MET TLE 16MM-P2.0 PL
8	00764386	2	GREASE FITTING,8MMX1 STRAIGHT
9	00756004	1	DECAL-SHIELD MISSING

DRIVELINE-OUTER S/N12870 -BELOW Pub 02-05



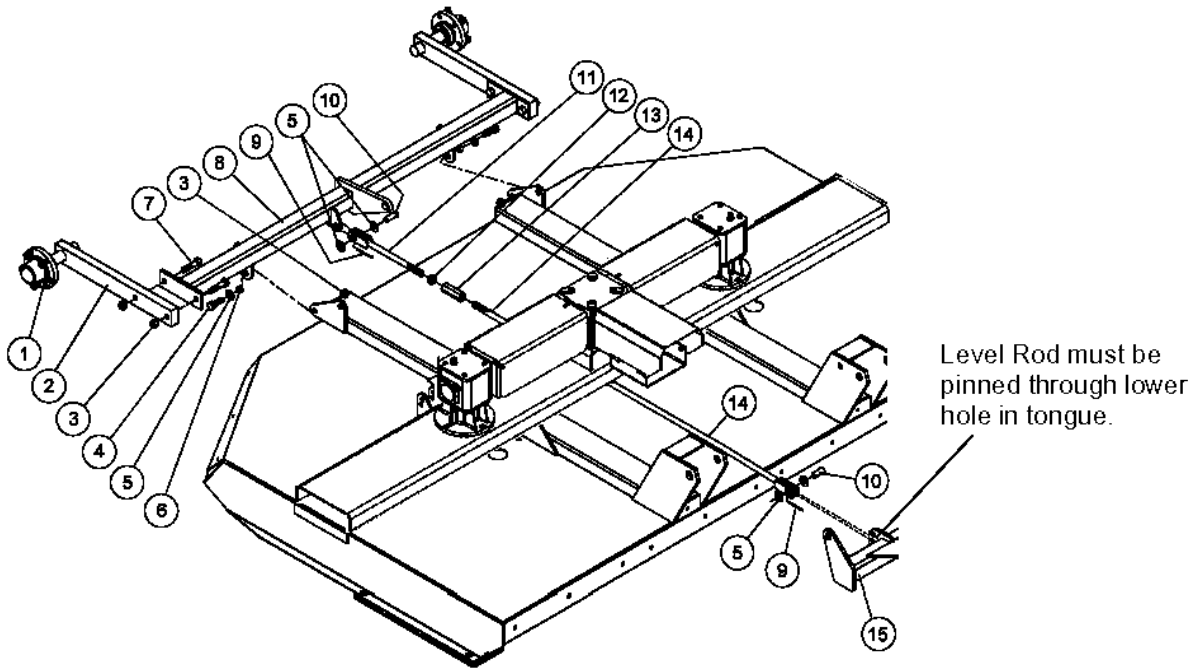
ITEM	PART NO.	QTY.	DESCRIPTION
	00771548	2	ASY-DRIVELINE COUPLER 1-3/8-21
1	00771551	1	WLDMT, SLEEVE D/L COUPLER SE10
2	00762215	1	DISC,RUBBER (W/O BUSHINGS)
3	00758636A	1	SPIDER, W/1-3/8-21 SPLINE SE-8
4	00765962	6	NUT MET TLE 16MM-P2.0 PL
5	02964434	6	HEXB METRIC 16-P2.0 - 65MM 5
6	00755949	1	NUT METRIC 10MM-P1.5 PL
7	00758659	1	HHCS, M10X1.5X32
8	00766475A	12	WASHER,BEADED D/L COUPLER
9	00771287	6	BUSHING,RUBBER DISK
10	00764386	2	GREASE FITTING,8MMX1 STRAIGHT

BLADE PAN ASSEMBLY



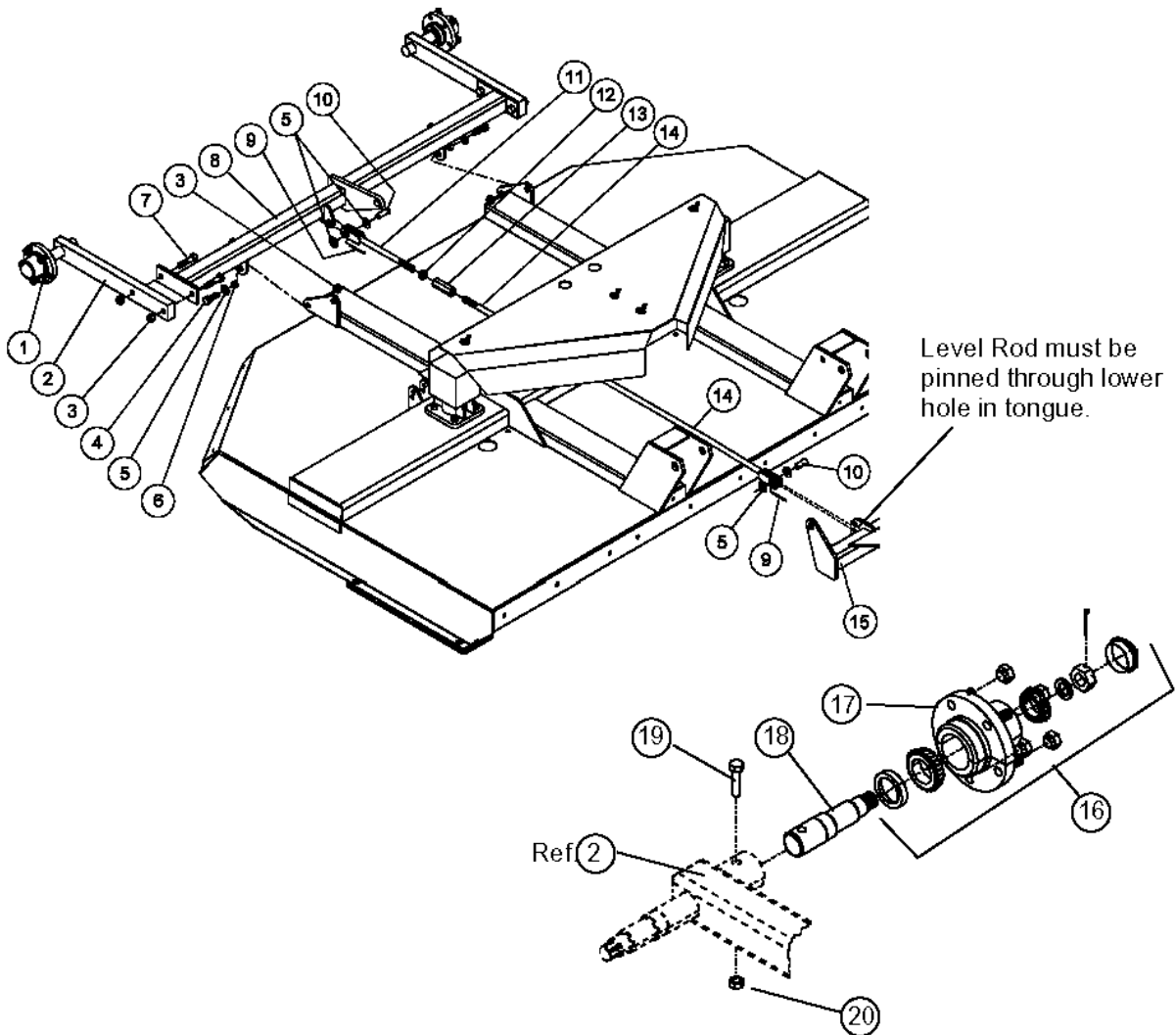
ITEM	PART NO.	QTY.	DESCRIPTION
1	00777386	1	WLDMT, BLADEPAN
2	00771702	2	BLADE SUCTION CW
	00771700	2	BLADE, SUCTION C/CW
3	00761402	2	BLADE BOLT 7/8 DIA X 3 LG
4	00761535	2	WASHER-7/8 STR PLAIN
5	00750226	2	NUT TOPLOCK 7/8 NF PLC

AXLE & CONTROL ROD ASSEMBLY - PULL TYPE S/N 13136 -CURRENT Rev 08-07



ITEM	PART NO.	QTY.	DESCRIPTION
1	00775616A	2	WHEEL HUB, ASSY
2	00785546	2	WLDMT,SPINDLE
3	00037200	6	LOCKNUT
4	02963646	2	HEXB 3/4-10UNC 2- 1/2 PL8
5	15B1200	6	WASHER 3/4 P SAE
6	511016	2	BUSHING
7	00007800	4	BOLT
8	00771761	1	WELDMENT, AXLE SE10
9	00755153	2	PIN-COTTER 3/16 X 1-1/2 PLATED
10	651102	2	PIN-DRILLED
11	00758643	1	ROD,CONTROL
12	5C1490	1	HEXNUT 7/8 JAM ZP
13	00770485A	1	NUT,EXTENDED ADJUSTMENT
14	00771804	1	WELDMENT, CONTROL ROD
15	00761968	1	WLDMT TONGUE
19	000245	2	BOLT
20	00001800	2	TOPLOCK

AXLE & CONTROL ROD ASSEMBLY - PULL TYPE S/N 13135 -BELOW Rev 08-07

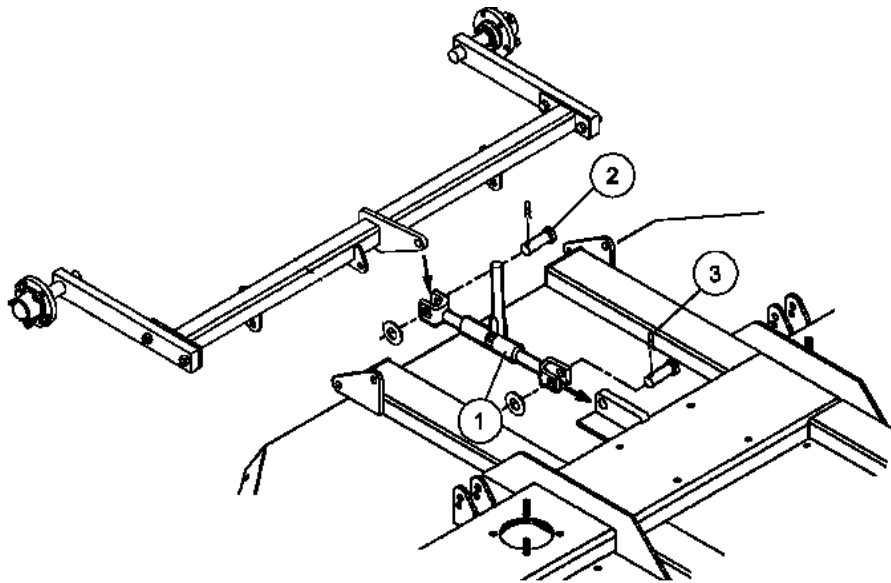


ITEM	PART NO.	QTY.	DESCRIPTION
1	00757241	2	WHEEL HUB, PREASSY
2	00772228	2	WLDMT,SPINDLE
3	00037200	6	LOCKNUT
4	02963646	2	HEXB 3/4-10UNC 2- 1/2 PL8
5	15B1200	6	WASHER 3/4 P SAE
6	511016	2	BUSHING
7	00007800	4	BOLT
8	00771761	1	WELDMENT, AXLE SE10
9	00755153	2	PIN-COTTER 3/16 X 1-1/2 PLATED
10	651102	2	PIN-DRILLED
11	00758643	1	ROD,CONTROL
12	5C1490	1	HEXNUT 7/8 JAM ZP
13	00770485A	1	NUT,EXTENDED ADJUSTMENT
14	00771804	1	WELDMENT, CONTROL ROD
15	00761968	1	WLDMT TONGUE
16	00756528	2	WHEEL HUB ACCESS. KIT
17	00756489	2	HUB W/ CUPS & STUBS
18	00771296	2	SPINDLE,AUX.
19	000245	2	BOLT
20	00001800	2	TOPLOCK

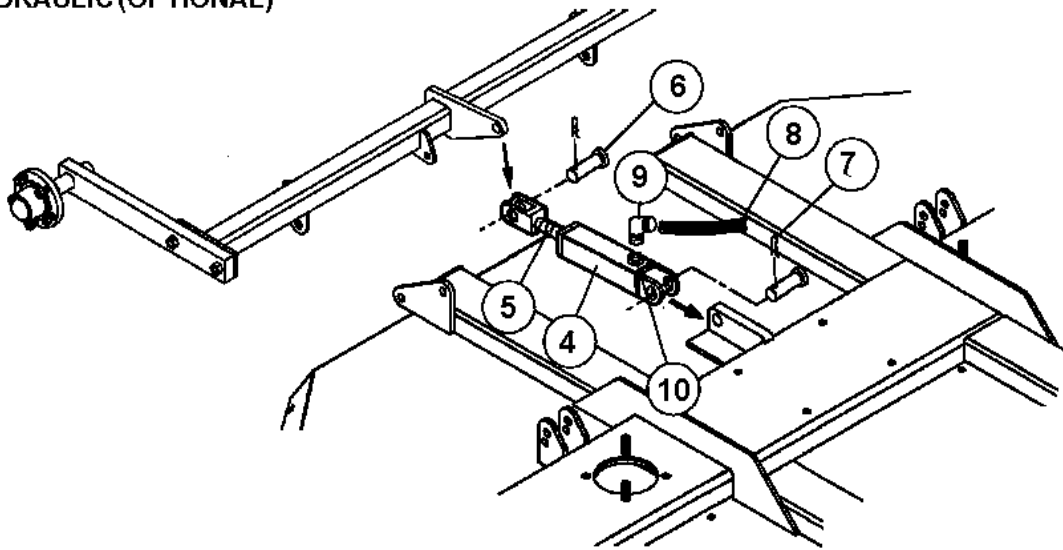
SE10A (July-05) S/N 12987 -Current Rev 08-07

LIFT ARRANGEMENTS - Rev 03-06

MANUAL

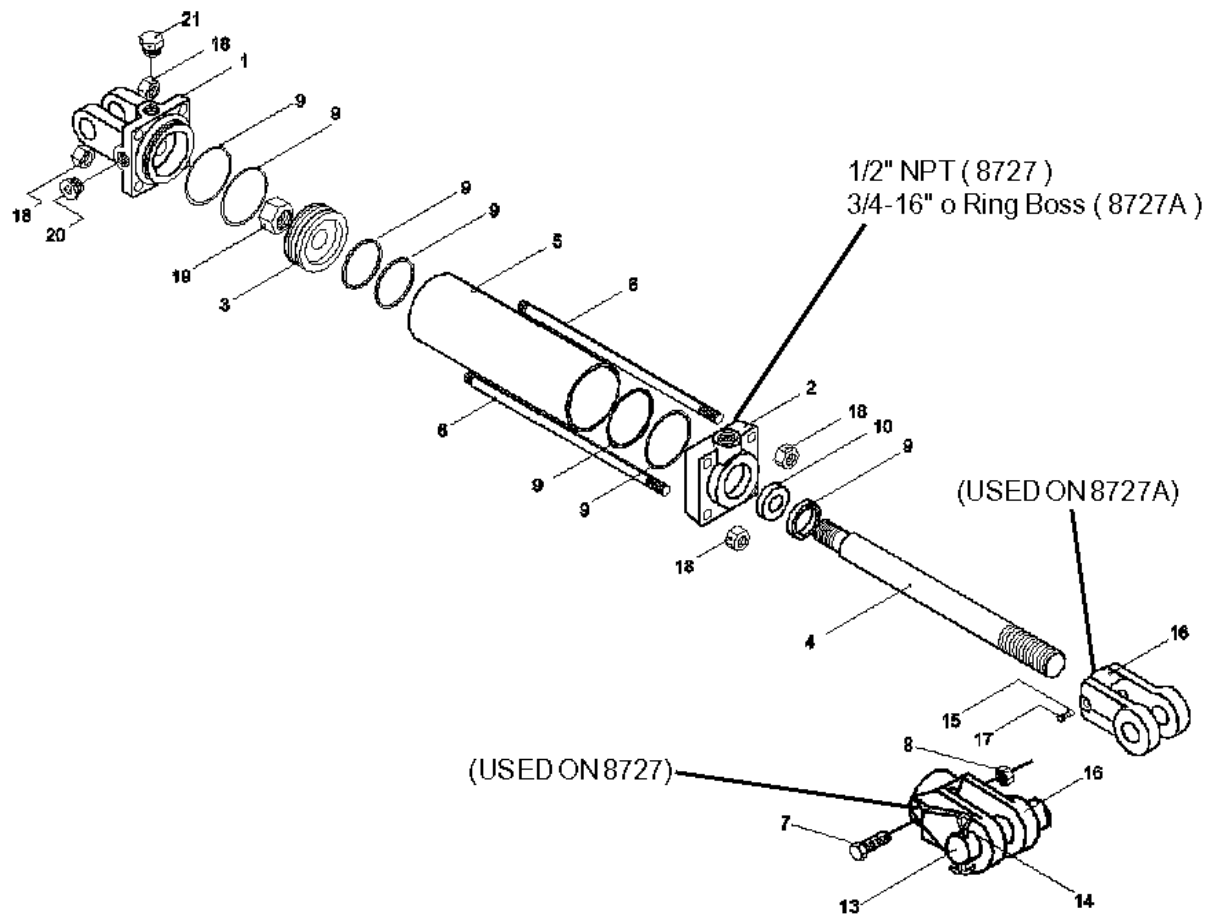


HYDRAULIC (OPTIONAL)



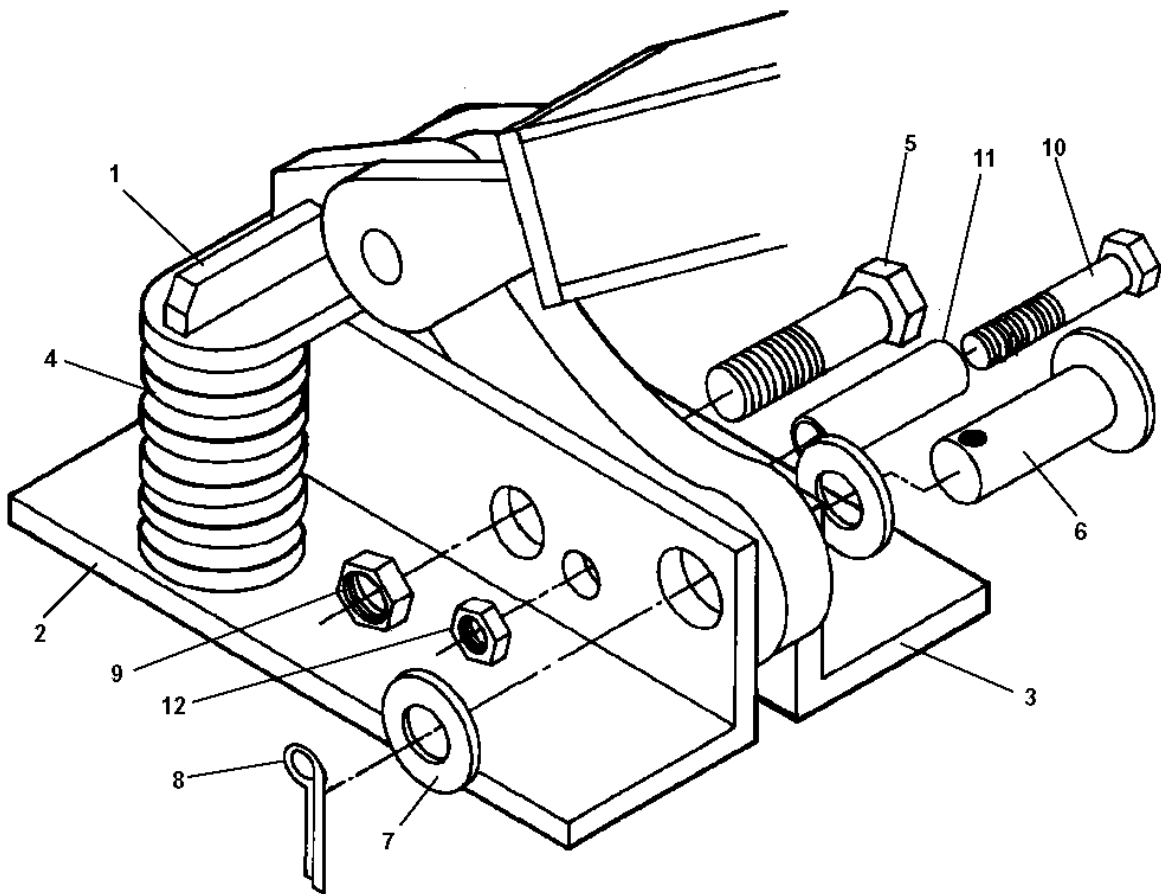
ITEM	PART NO.	QTY.	DESCRIPTION
1	00554600	1	
2	8354	2	PIN-HYD. CYLINDER
3	00606000	2	
4	8727A	1	CYLINDER HYD 2-1/2 8
5	00755234	1	CONTROL SPACER KIT
6	8354	2	PIN-HYD. CYLINDER
7	00606000	2	
8	651132	1	HOSE #6 - 8MP - 8MP - 144LG
9	94514	1	ADAPTER, HYD, ELBOW SWIVEL
10	00768343	1	USE 0652141311
11	00777963	1	PLATE, TRANSPORT LOCK

CYLINDER, HYDRAULIC LIFT P/N 8727A



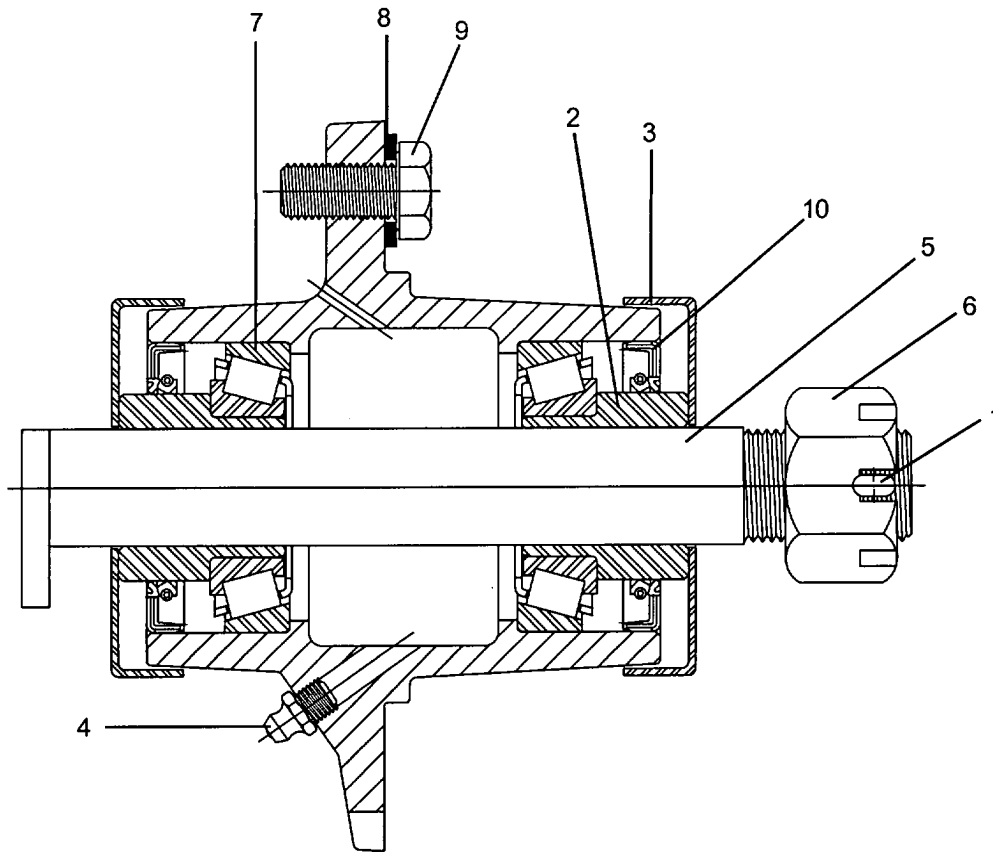
ITEM	PART NO.	QTY.	DESCRIPTION
	8727A	-	CYLINDER HYD 2-1/2 8
1	00774729	1	CLEVIS CAP 2.5-3/4 ORB-1.00
2	00774734	1	ROD CAP 2.50-1.25-3/4 ORB
3	00774730	1	PISTON 2.5-0.75-S HALL W/RING
4	00774753	1	ROD CYL 1.25-08-0.75-1.25-A
5	3047111	1	CYLINDER TUBE
6	3047112	4	TIE ROD
9	00774760	1	SEAL KIT FOR 8727A & 8728A CYL
15	3047117	1	THREAD LOCK
16	1917140	1	ROD CLEVIS
17	00774740	1	SC SCKT SET 3/8UNCX1/2 KNUR
18	33003H5C	8	HEX NUT 3/8-16 GR.5
19	5JRC12160	1	NUT TOPLOCK 3/4 NF PLC
20	1917132	1	SCKT HD O-RNG PLUG,3/4-16 UNF,
21	2417154	1	BREATHER,CYLINDER #8 ORB
	651132	2	HOSE #6 - 8MP - 8MP - 144LG
	94514	2	ADAPTER, HYD, ELBOW SWIVEL
	0652141311	2	ADP HYD STGHT 8MB - 8FP
	8354	2	PIN-HYD. CYLINDER
	00606000	2	COTTER PIN

SPRING SHOCK ASSEMBLY (OPTIONAL)



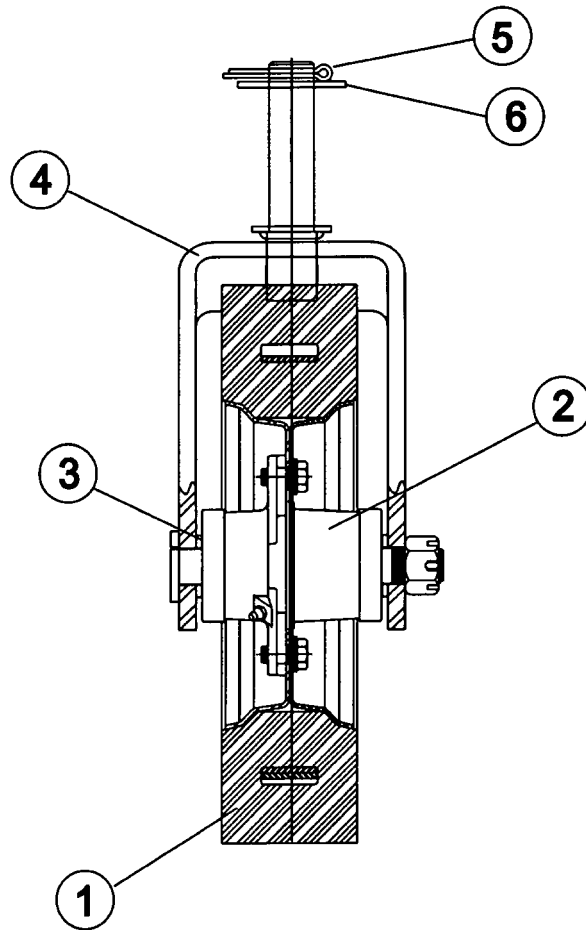
ITEM	PART NO.	QTY.	DESCRIPTION
	00759191	1	ASSY,SPRING SHOCK (BLACK)
1	00759190	1	WLDMT SPRING SHOCK SR120
2	00759189	1	WLDMT ANGLE BKT L/H SR120
3	00759188	1	WLDMT ANGLE BKT R/H SR120
4	371063A	2	SPRING
5	02782100	1	HHCS 1 NC 2-3/4 GR8
6	8354	1	PIN-HYD. CYLINDER
7	02822500	1	FLATWASHER 1 PL STD
8	00606000	1	COTTER PIN
9	02030300	1	NUT TOPLOCK 1 NC PLB
10	00750952	1	HEXB,5/8NC X 2-1/2,ZP,GRD5
11	00761199	1	TUBE-SPACER
12	00695100	1	LOCKNUT

TAIL WHEEL HUB ASSEMBLY S/N 12908 -CURRENT Pub 04-05



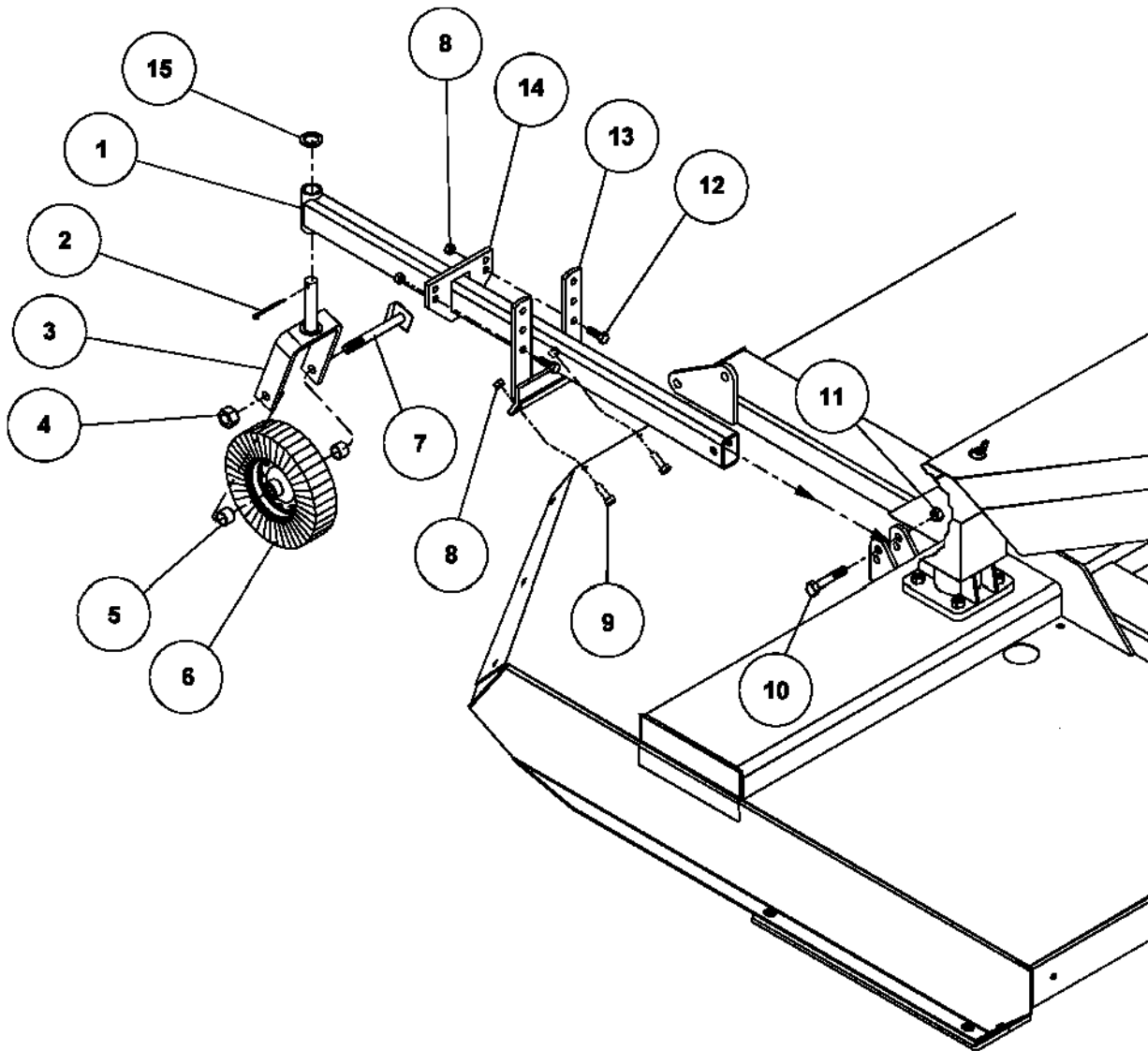
ITEM	PART NO.	QTY.	DESCRIPTION
1	00771620	1	COTTER PIN
2	00772017	2	BUSHING SPINDLE STEP
3	00772018	2	DUST CAP
4	00772082	1	GREASE NIPPLE
5	00776211	1	SPINDLE BOLT
6	00776212	1	SPINDLE NUT
7	00776213	2	BEARING
8	00776215	4	LUG BOLT FLAT WASHER
9	00776216	4	BOLT
10	00776219	2	OIL SEAL

CASTER FORK & WHEEL ASSEMBLY S/N 12908 -CURRENT Pub 04-05



ITEM	PART NO.	QTY.	DESCRIPTION
	00776210	-	CASTER FORK & WHEEL ASSY, LAMINATED
1	373024H	1	WHEEL & TIRE ASSY
2	00776214	1	HUB
3	00776217	2	WASHER
4	00776224	1	FORK CASTER ASSY.
5	00036900	1	COTTER PIN
6	152B000	1	WASHER

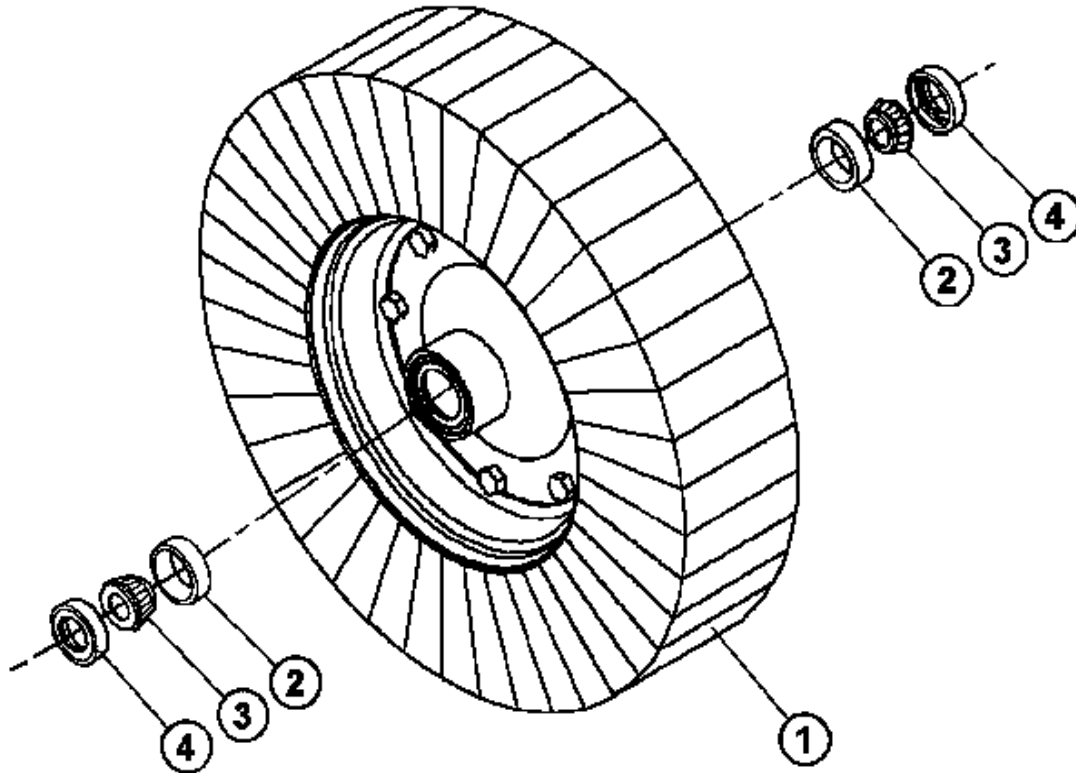
TAILWHEEL ASSEMBLY - LIFT TYPE S/N 12907 -BELOW Pub 04-05



ITEM	PART NO.	QTY.	DESCRIPTION
1	00771822	2	WELDMNT TAILWHEEL TUBE
2	000162	2	COTTER PIN
3	0891030100	2	WLDMT CASTER FORK
4	5JRC16140	2	LOCKNUT 1 -14 TLDT GC ZP
5	00765337	4	SPACER
6	00130010	2	TIRE & WHEEL ASSY
7	0891030300	2	WLDMT SPINDLE , SE5
8	00001800	8	LOCKNUT
9	02030700	4	HHCS 1/2-13UNC 1-1/4 PL5
10	02845700	2	HHCS 5/8 NC 4 PL5
11	00695100	2	LOCKNUT
12	00748823	4	HHCS 1/2-13UNC 1-1/2 PL5
13	00761989	2	WLDMT TAILWHEEL BRKT
14	702302R	2	BRACKET
15	4673	2	BUSHING 1-7/8 OD X 1-1/4 ID

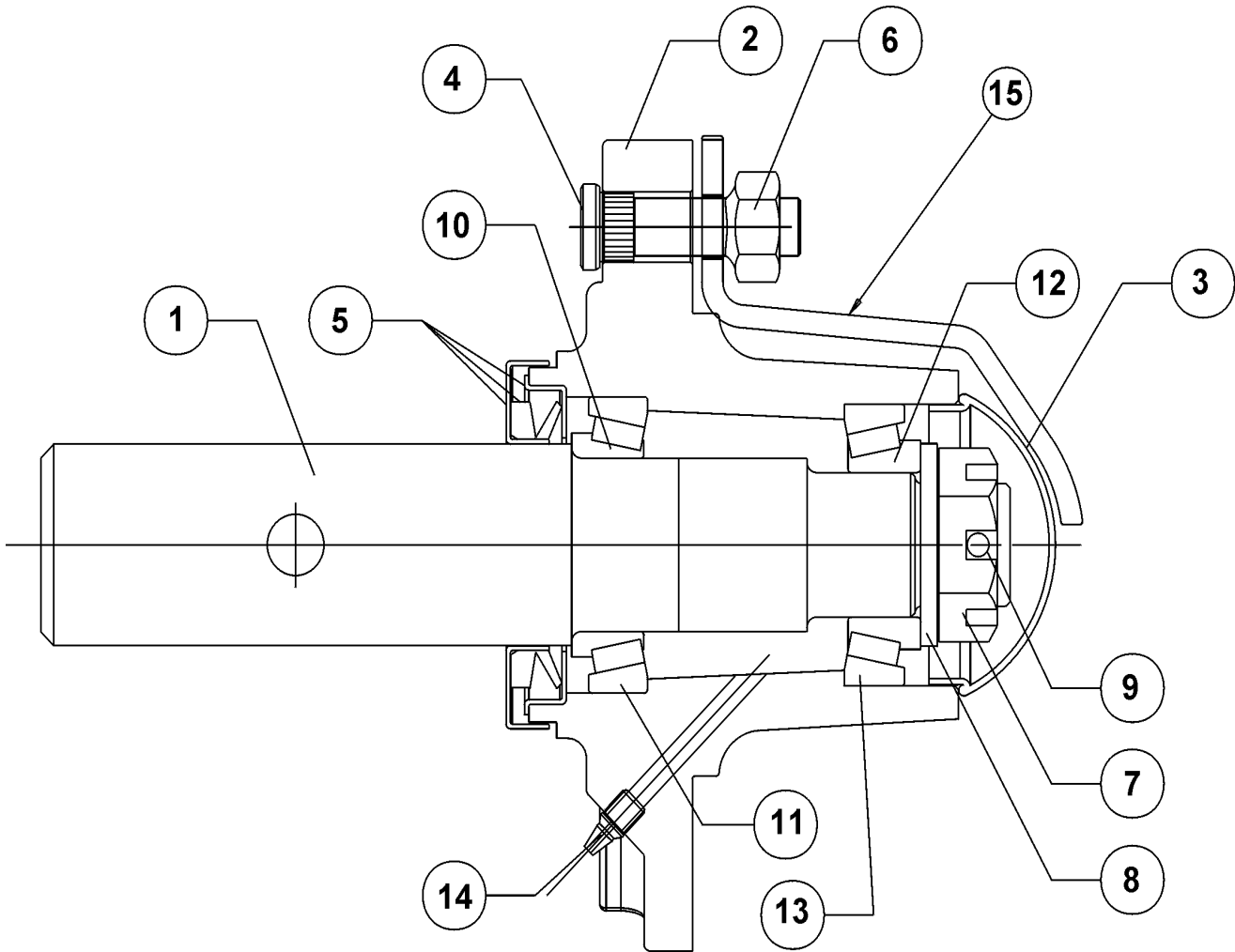
SE10A (July-05) S/N 12987 -Current Rev 08-07

TIRE & WHEEL ASSEMBLY -LIFT TYPE S/N 12907 -BELOW Pub 04-05



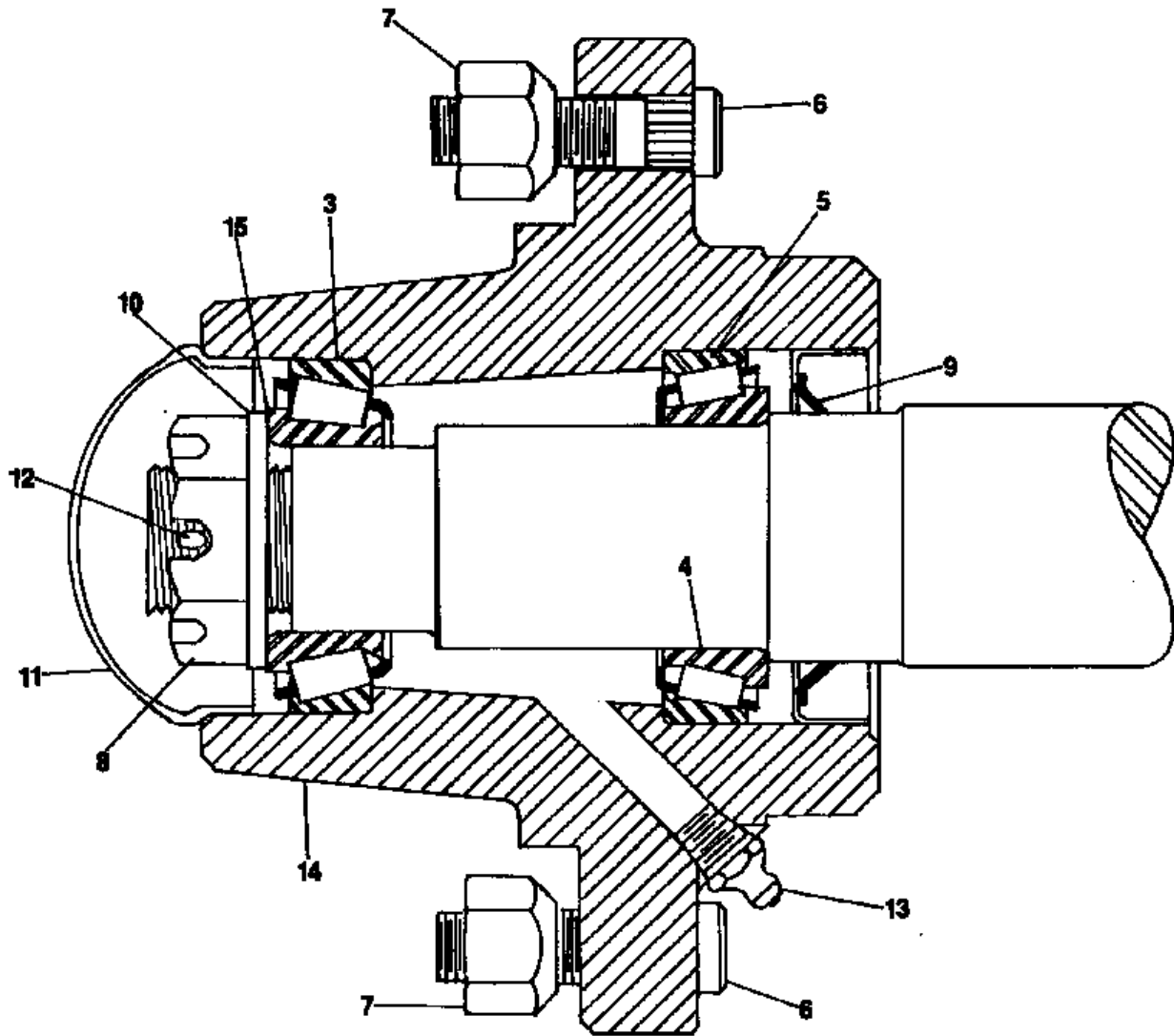
ITEM	PART NO.	QTY.	DESCRIPTION
	00130010	-	TIRE & WHEEL ASSY
1	00756750	1	TIRE/WHL. W/CUPS(BREAK DOWN
2	00750621	2	CUP, BEARING
3	00013701	2	BEARING CONE
4	00013600	2	SEAL

WHEEL HUB ASSEMBLY - PULL TYPE S/N 13136 -CURRENT Rev 08-07



ITEM	PART NO.	QTY.	DESCRIPTION
	00775616A	1	HUB & SPINDLE ASSY
1	00774821	1	SPINDLE SINGLE WHEEL
2	00779456	1	ASY,WHEEL HUB - W/CUPS & STUDS
3	00756492	1	DUST CAP
4	13198	5	BOLT, HUB
5	00778108	1	SEAL PROTECTOR
6	00756014	5	ROTOR
7	00756490	1	NUT SLOTTED THIN 1 NF PLC
8	00756493	1	WASHER
9	00026200	1	PIN,COTTER 5/32 X 1-1/2
10	00750434	1	BEARING CONE INSIDE
11	00756576	1	BEARING CUP OUTSIDE
12	0371242102	1	CONE, BEARING
13	00756577	1	BEARING CUP INSIDE
14	00003500	1	ZERK FITTING 1/8 STRAIGHT
15	00779455	1	RETAINER,HUB CAP
	00779456	-	ASY,WHEEL HUB - W/CUPS & STUDS

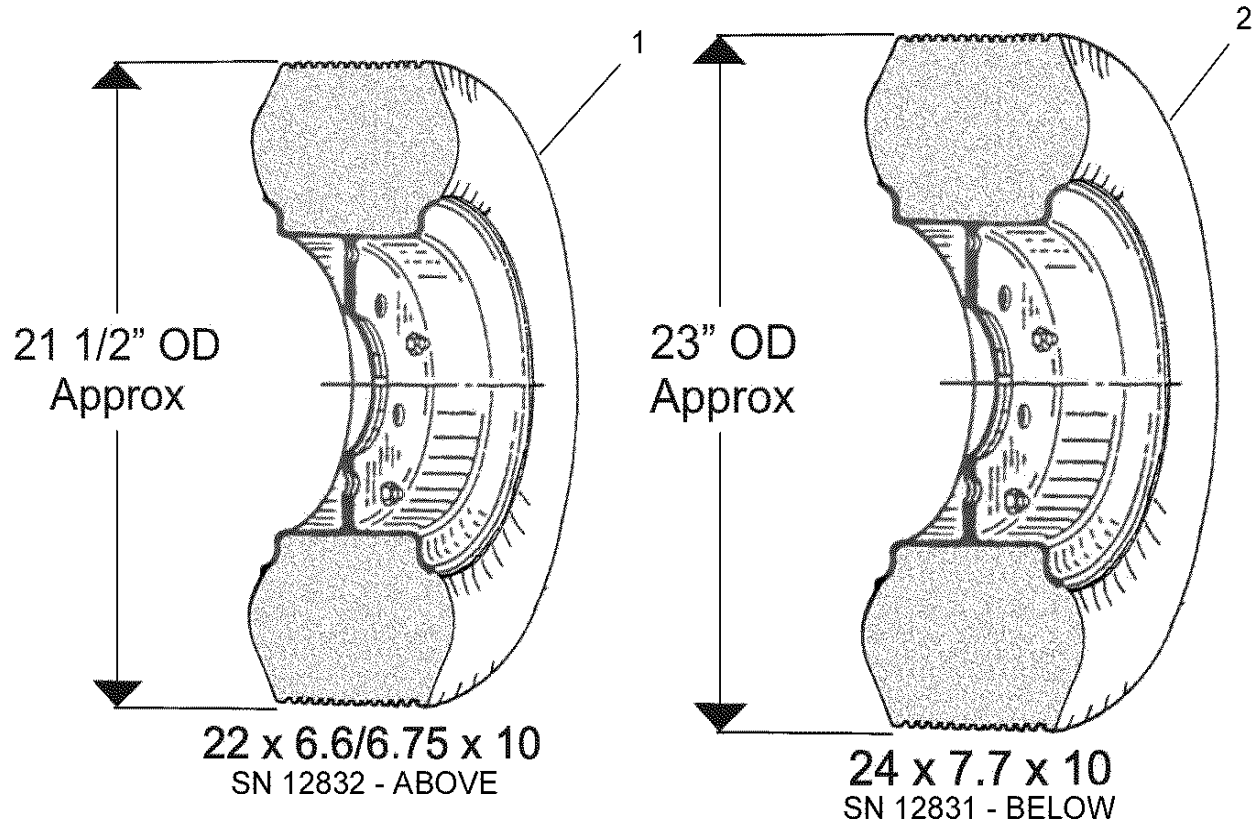
WHEEL HUB ASSEMBLY - PULL TYPE S/N 13135 -BELOW Rev 08-07



ITEM	PART NO.	QTY.	DESCRIPTION
	00757241	-	WHEEL HUB, PREASSY
3	00756576	1	BEARING CUP OUTSIDE
4	00750434	1	BEARING CONE INSIDE
5	00756577	1	BEARING CUP INSIDE
6	00756488	5	STUD BOLT
7	00750614	5	NUT 1/2-20NF 90DEG.CONE LUG PL
8	00756490	1	NUT - SLOTTED
9	02957044	1	OIL SEAL HEAVY DUTY - TK-15
10	00756493	1	WASHER
11	00756492	1	DUST CAP
12	00026200	1	COTTER PIN
13	00003500	1	GREASE FITTING
14	00756000	1	HUB, WHEEL
15	0371242102	1	BEARING CONE
16	00756001	ref	SPINDLE
	00756489	ref	HUB W/ CUPS & STUBS
	00756528	ref	WHEEL HUB ACCESS. KIT
17	00756002	ref	SPINDLE DUAL WHEEL

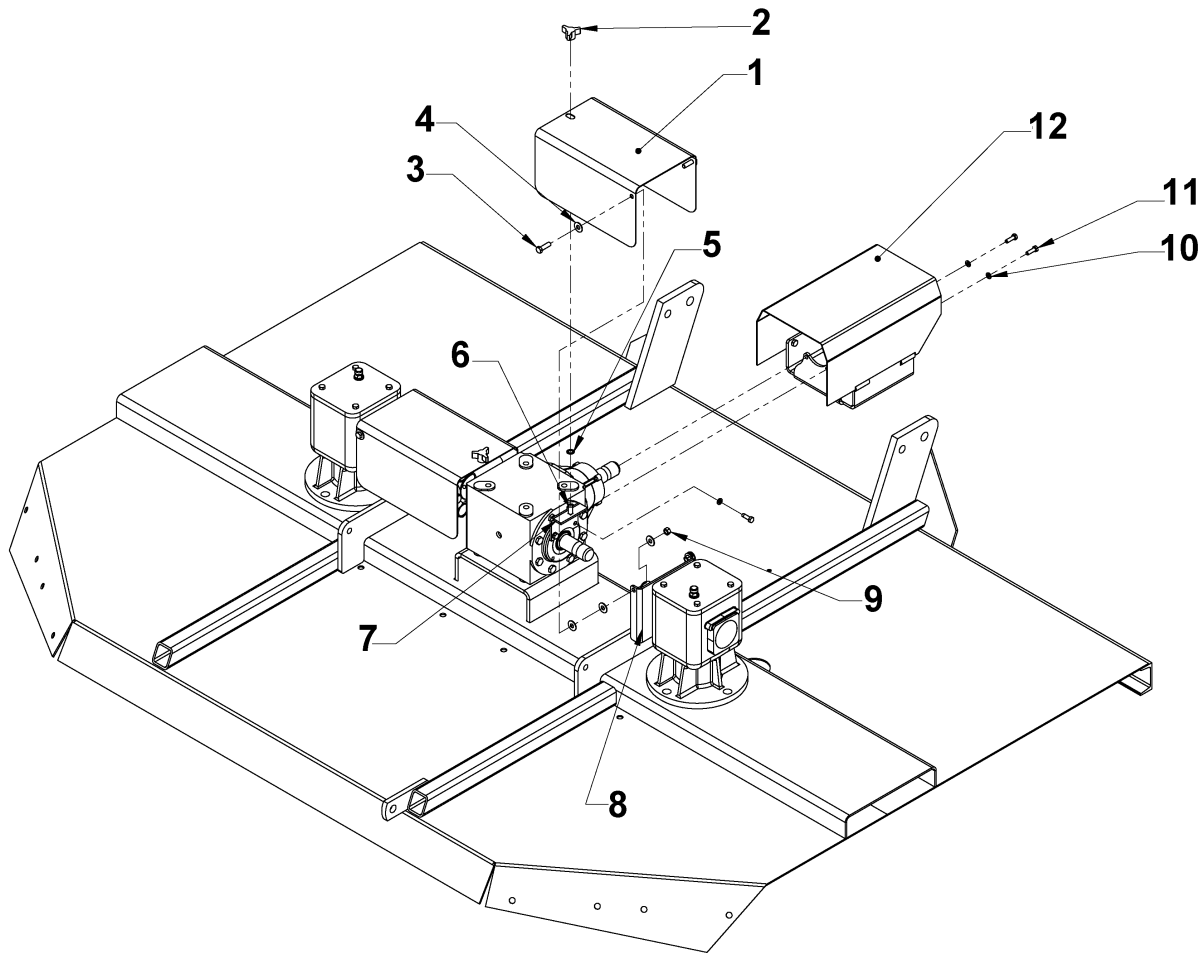
SE10A (July-05) S/N 12987 -Current Rev 08-07

FOAM FILLED USED AIRCRAFT TIRE



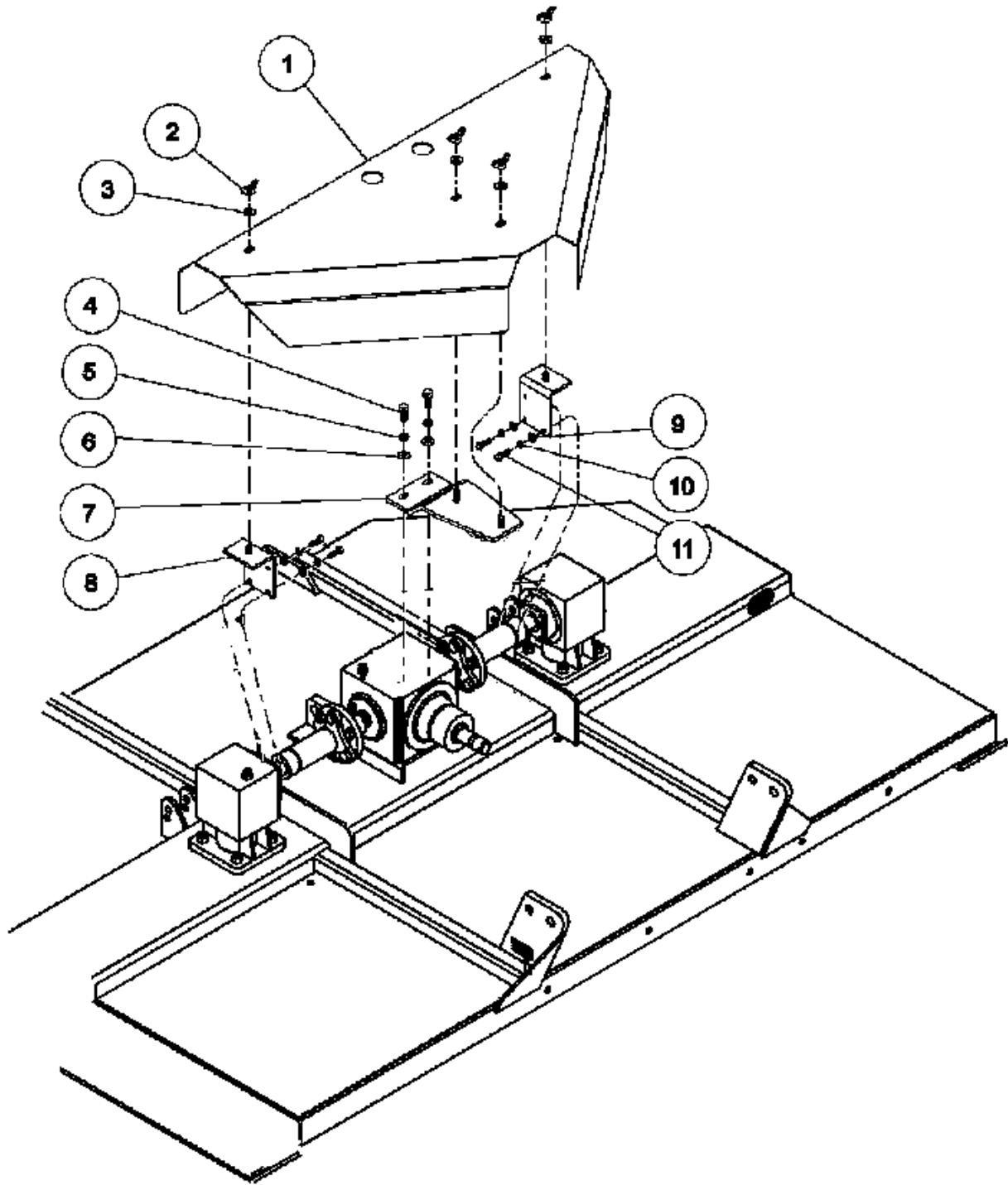
ITEM	PART NO.	QTY.	DESCRIPTION
1	00766911	-	ASY,AIRCRAFT TIRE & WHEEL (CURRENT PRODUCTION)
2	00766911A	-	ASY, AIRCRAFT TIRE & WHEEL (OBSOLETE, NOT CURRENT PRODUCTION)

SHIELD ASSEMBLY S/N 12987 -Current Pub 07-05



ITEM	PART NO.	QTY.	DESCRIPTION
1	00778954	1	SHIELD HOOD
2	00769933	4	NUT-PLASTIC KNOB 3/8 NC PL
3	7A61610	4	C/S3/8 X 1 1/4 NC ZP
4	00011100	16	FLATWASHER 3/8 PL STD
5	02961255	2	PUSHNUT, BOLT RETAINER, 3/8
6	26168	2	CRG-BLT 3/8 X 1 GR5
7	00778953	2	SHIELD BRACKET
8	00778952	2	SHIELD BRACKET
9	00015800	4	NUT, TOPLOCK 3/8NC PLB
10	00011700	14	LOCKWASHER 5/16 PL STD
11	10119000	14	HHCS 5/16NC 1 PL5
12	00778957	1	DIVIDER SHEILD WELDMENT

SHIELD ASSEMBLY S/N 12986 -Below Pub 07-05

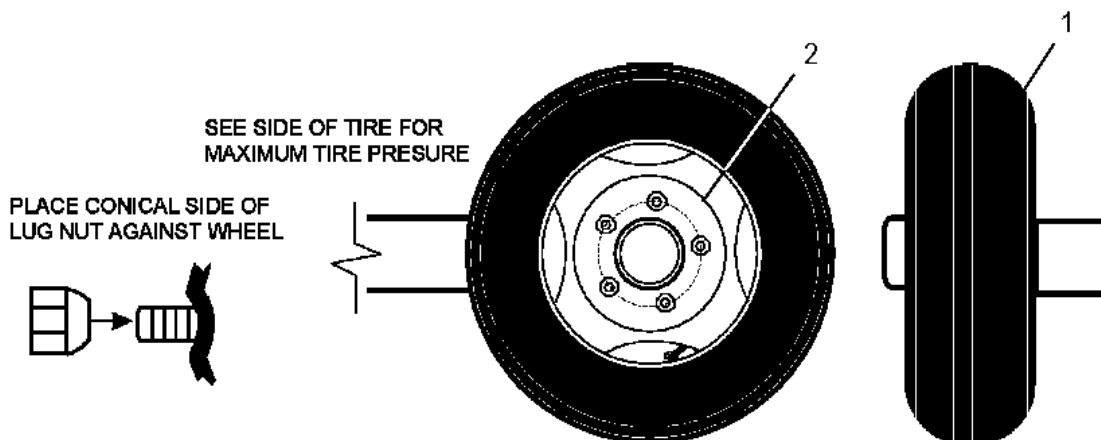


SHIELD ASSEMBLY S/N 12986 -Below Pub 07-05

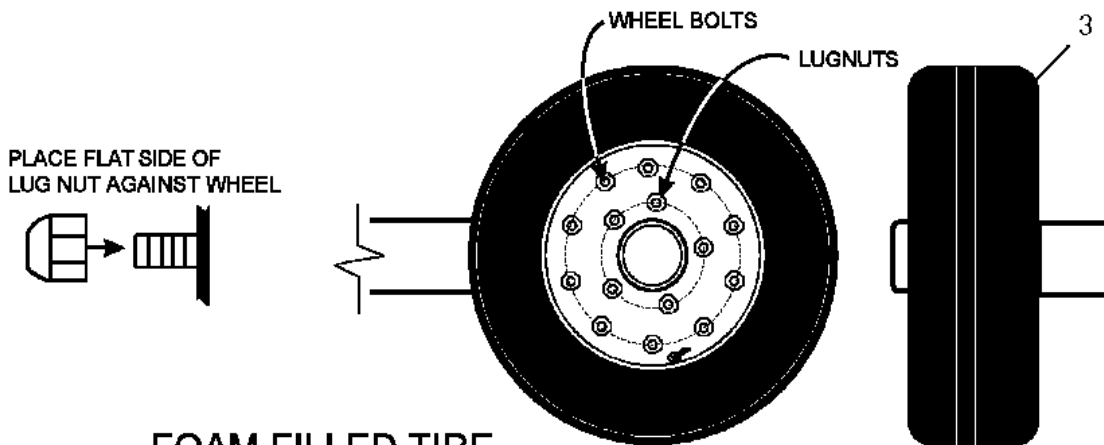
ITEM	PART NO.	QTY.	DESCRIPTION
1	00771759	1	SHIELD,GEARBOX SE10
2	5F8130	4	1/2 NC WING NUT
3	00002700	4	FLATWASHER
4	00752658	2	HEXB 5/8 NC 1-1/4GR5
5	00010300	2	LOCKWASHER
6	00001400	2	FLATWASHER
7	00768980	1	WLDMT CTR GEARBOX SHIELD SUPT
	00777967	1	PLATE, SHIELD SUPPORT
8	00766559	2	BRKT-HOOD
9	00023500	4	FLATWASHER
10	00011700	4	LOCKWASHER
11	10119000	4	HHCS 5/16NC 1 PL5

SE10A (July-05) S/N 12987 -Current Rev 08-07

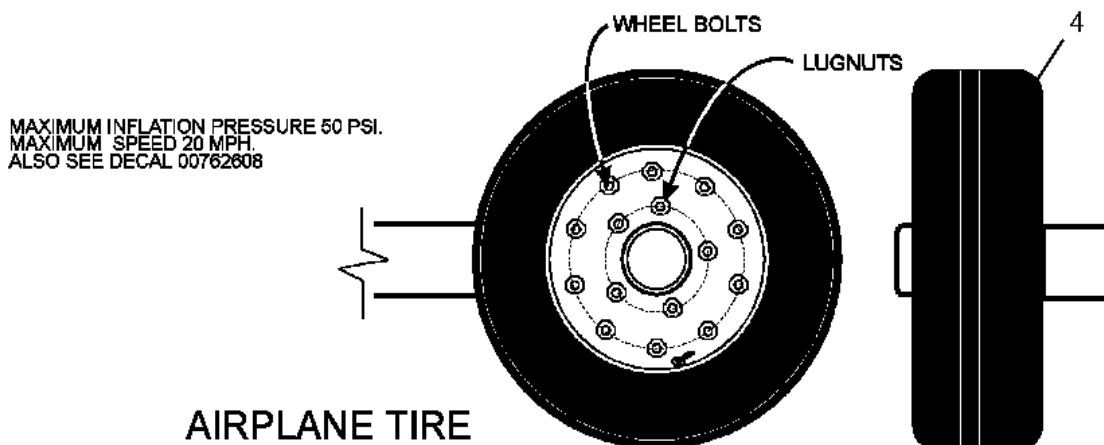
TIRE & WHEEL OPTIONS - PULL TYPE



RIB IMPLEMENT TIRE



FOAM FILLED TIRE



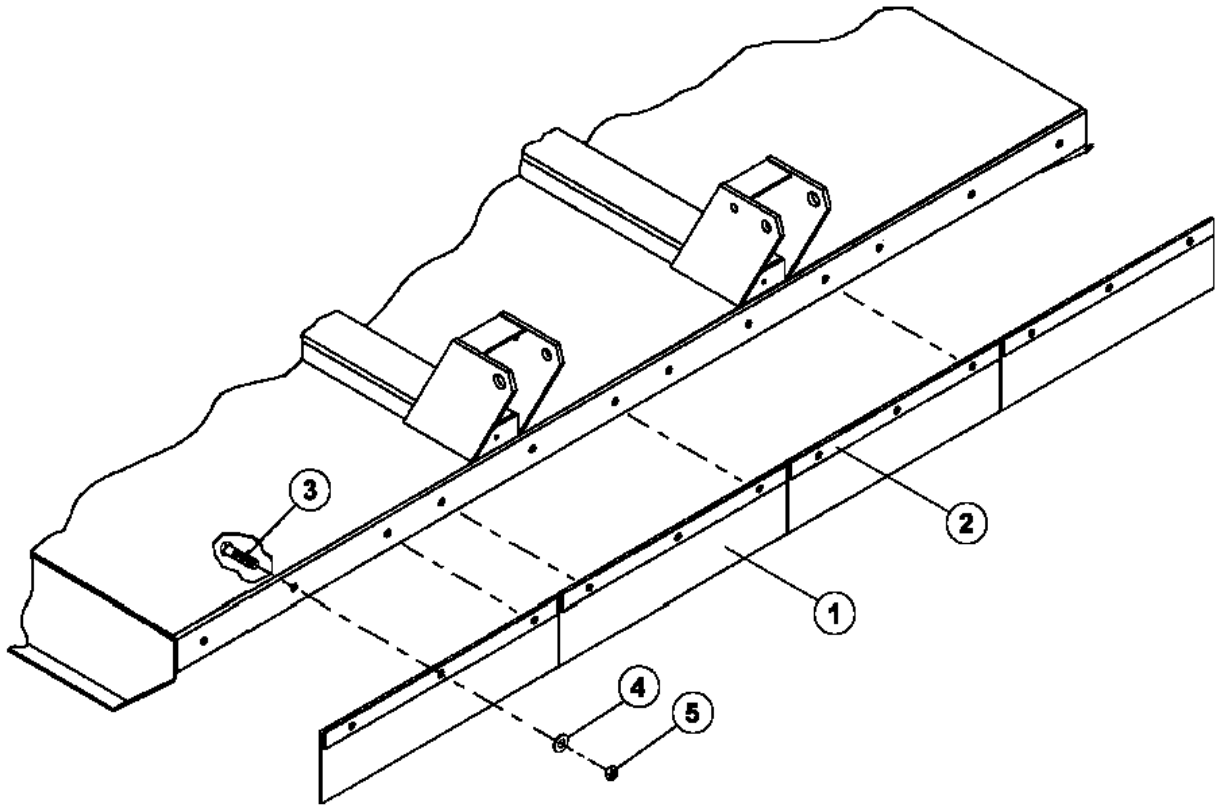
AIRPLANE TIRE

TIRE & WHEEL OPTIONS - PULL TYPE

ITEM	PART NO.	QTY.	DESCRIPTION
1	00749698	2	ASSY, WHL/IMPLEMENT TIRE
2	00008700	2	15" RIM
3	00766911	2	USE FOR PARTS ONLY
4	00771461	2	TIRE,AIRPLANE USED

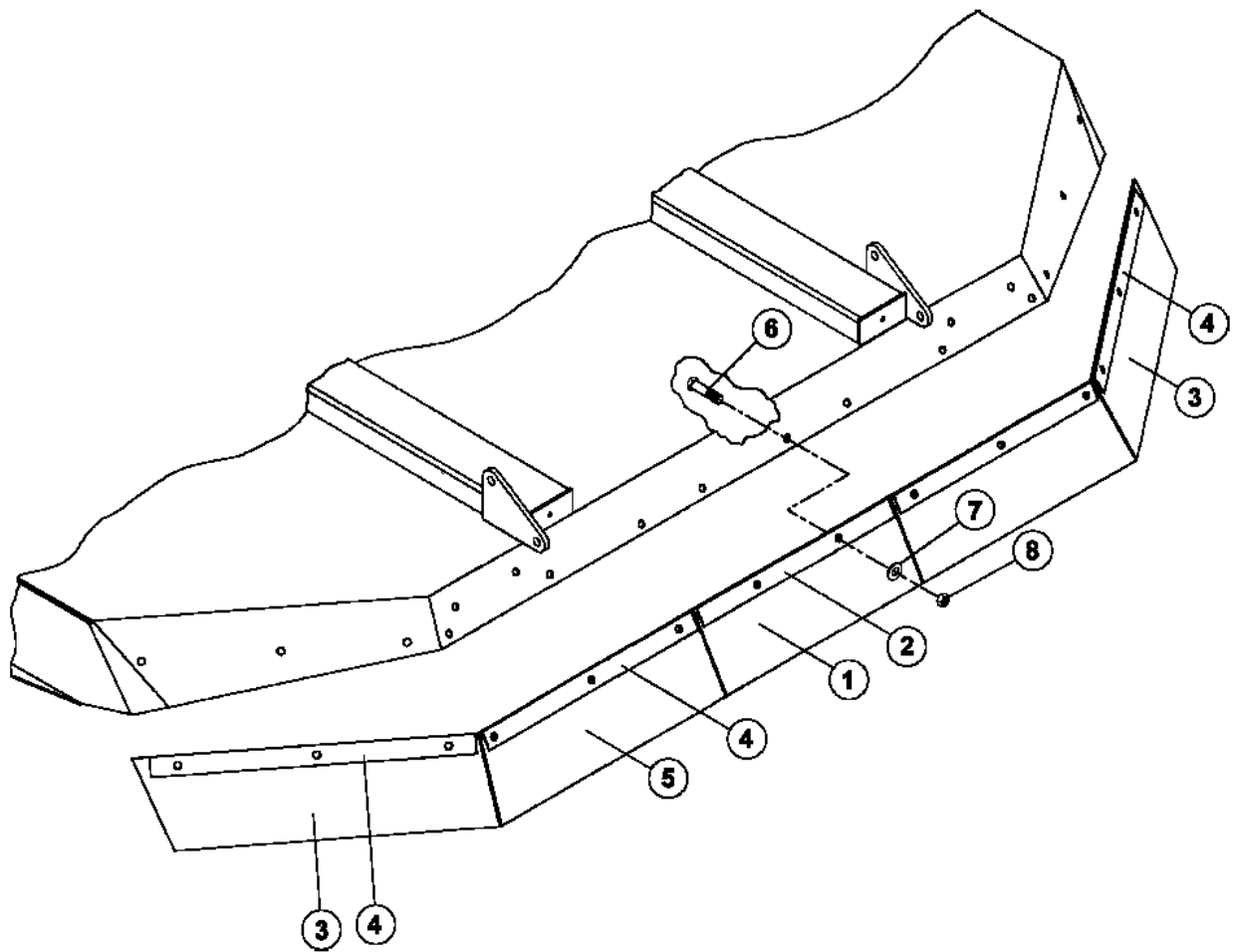
(*Quantities per Unit)

DEFLECTOR ASSEMBLY - FRONT



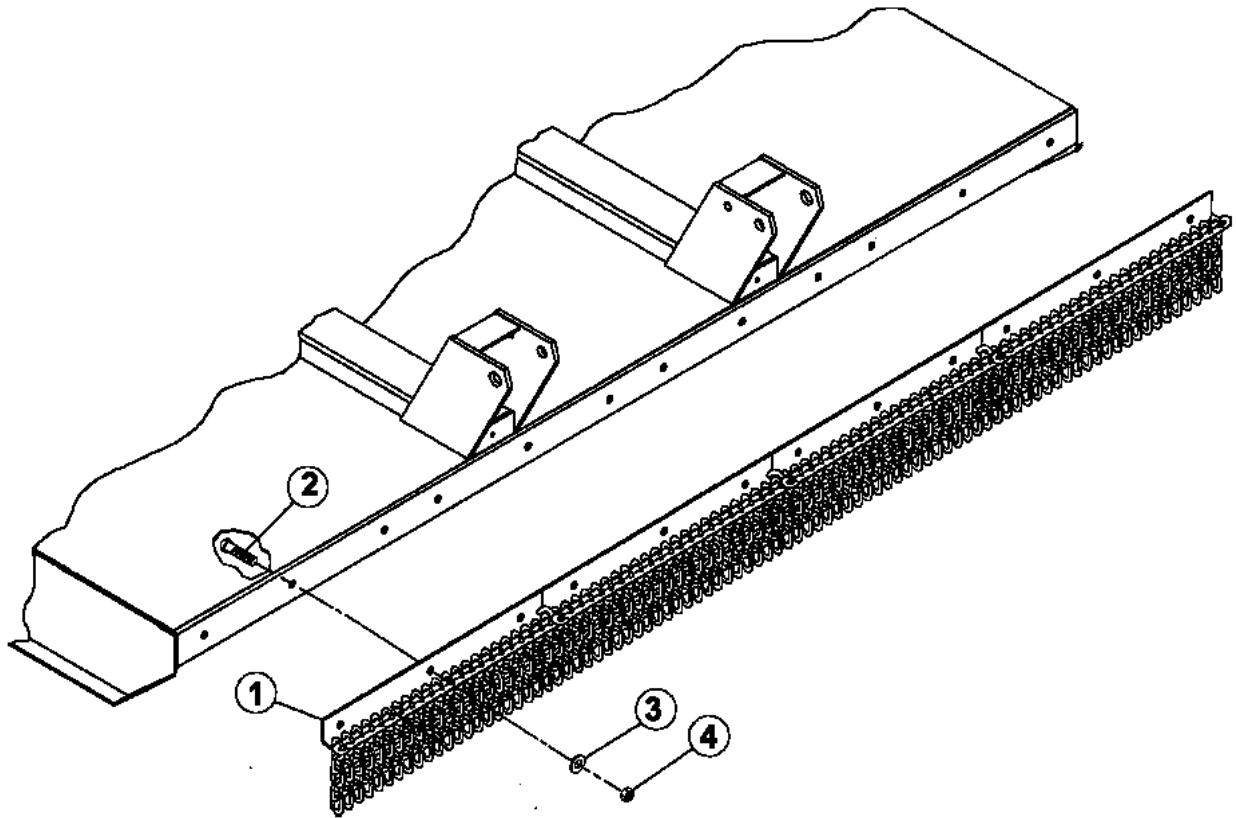
ITEM	PART NO.	QTY.	DESCRIPTION
	00771910	1	ASSY,DEFLECTOR FRONT
1	00772245	4	SHIELD, FRONT DEFLECTOR
2	00772063	4	FLAT, FRONT DEFLECTOR SUPPORT
3	02030700	12	HHCS 1/2-13UNC 1-1/4 PL5
4	00002700	12	FLATWASHER
5	00001800	12	NUT

DEFLECTOR ASSEMBLY - REAR



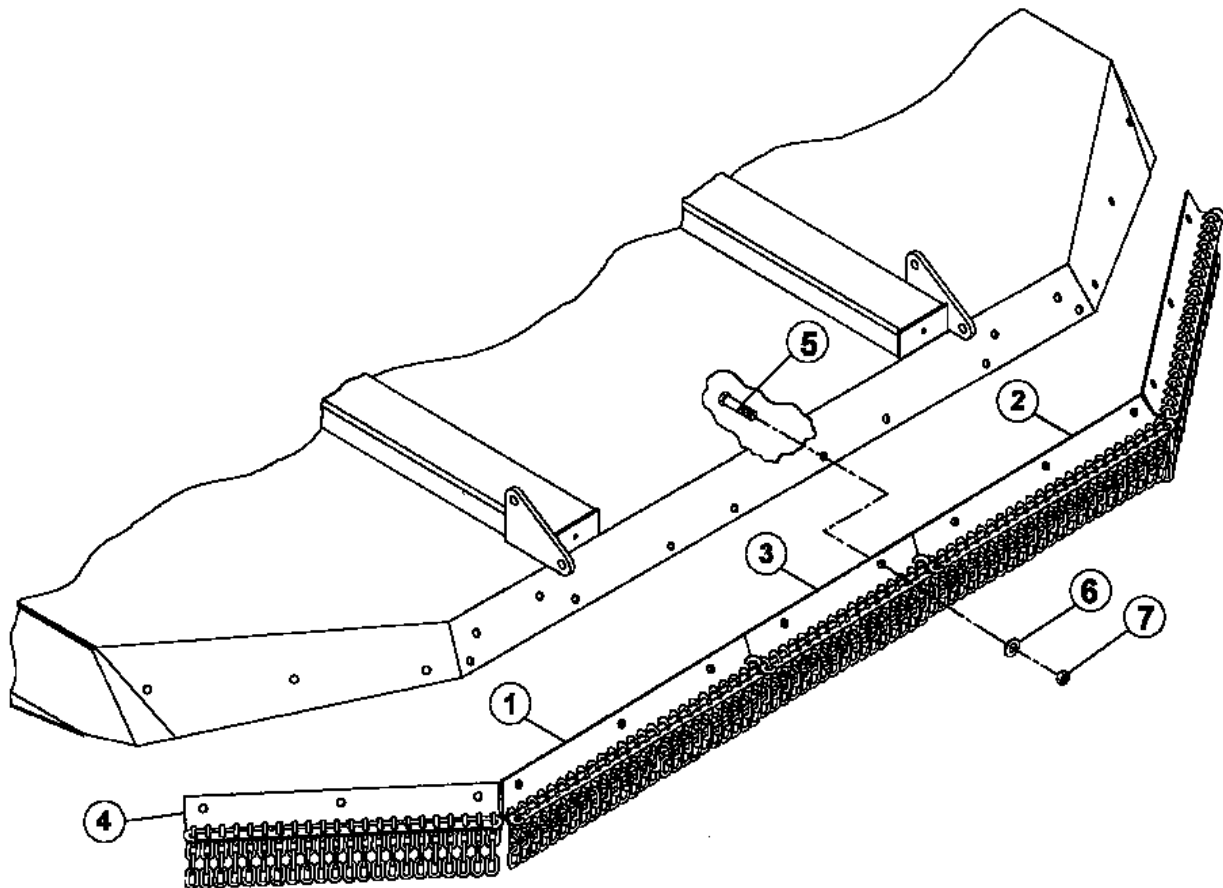
ITEM	PART NO.	QTY.	DESCRIPTION
	00771913	1	DEFLECTOR, ASY, RER
1	00772248	1	SHIELD, REAR DEFLECTOR
2	00772249	1	BAR, SHIELD SUPPORT
3	00772246	2	SHIELD, REAR DEFLECTOR
4	00763247	4	BAR REAR SUPPORT
5	00772247	2	SHIELD, REAR DEFLECTOR
6	02030700	14	HHCS 1/2-13UNC 1-1/4 PL5
7	00002700	14	FLATWASHER
8	00001800	14	NUT

CHAIN GUARD ASSEMBLY - FRONT



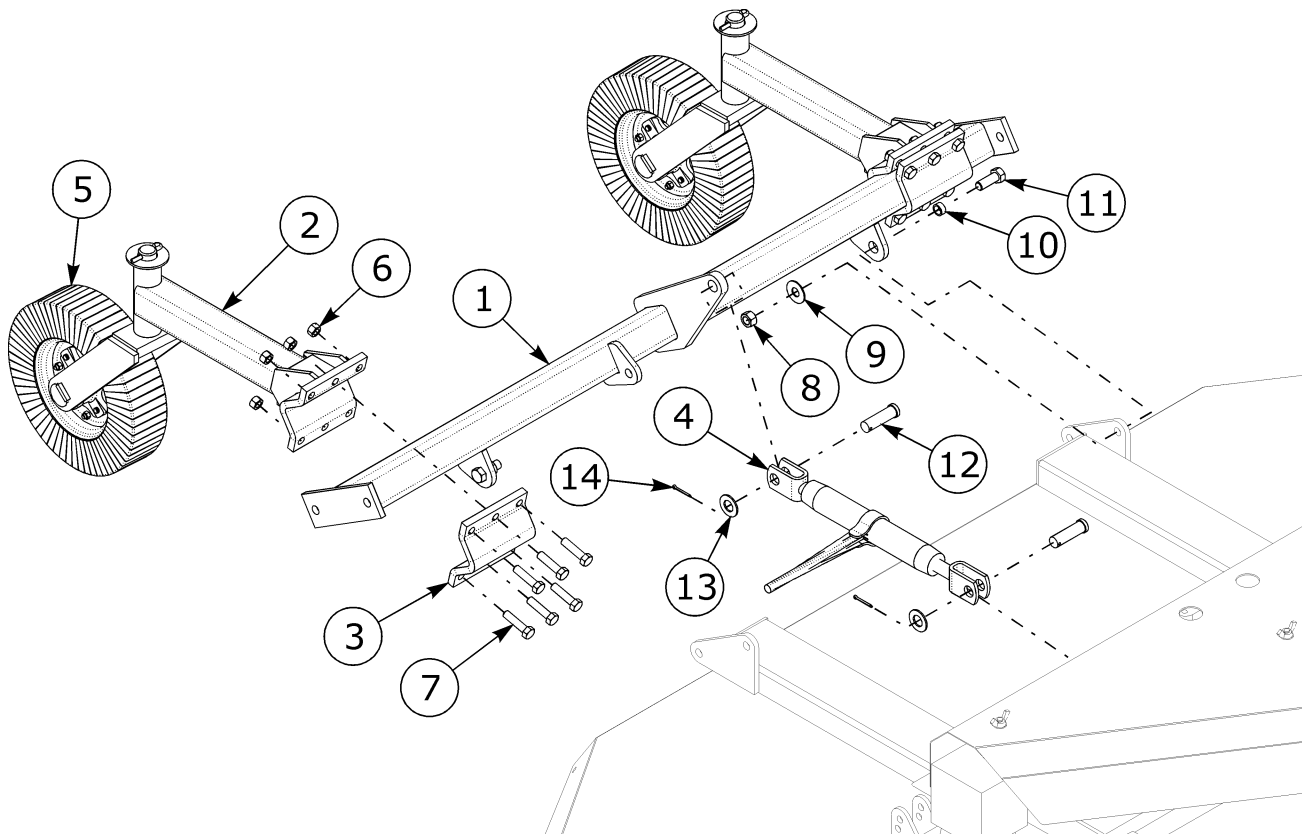
ITEM	PART NO.	QTY.	DESCRIPTION
1	00771734	4	CHAINGUARD, ASY
2	02030700	12	HHCS 1/2-13UNC 1-1/4 PL5
3	00002700	12	FLATWASHER
4	00001800	12	NUT

CHAIN GUARD ASSEMBLY - REAR



ITEM	PART NO.	QTY.	DESCRIPTION
1	00771735	1	CHAINGUARD, ASY, REAR LH
2	00771733	1	ASSY, REAR CHAIN GUARD RH
3	00771817	1	CHAINGUARD, ASY, REAR
4	00771725	2	ASSY, REAR CHAIN GUARD
5	02030700	14	HHCS 1/2-13UNC 1-1/4 PL5
6	00002700	14	FLATWASHER
7	00001800	14	NUT

AXLE ATTACHMENT -SEMI-MOUNT Rev 03-07



ITEM	PART NO.	QTY.	DESCRIPTION
1	00771761	1	WELDMNT, AXLE SE10
2	00767812	2	WELDMNT, CASTER BEAM SE-10
3	068303102	2	BRACKET
4	00554600P	1	RATCHET JACK
5	00776220	2	ASSY CASTER FORK & WHEEL
6	00695100	12	LOCKNUT TOPLOCK 5/8NC PLB
7	0076781	12	BOLT
8	00037200	2	NUT 3/4-NC TOPLOCK GRC PL
9	15B1200	2	WASHER 3/4 P SAE
10	701023R	2	BUSHING 1 OD X .76 ID .45 LG
11	029618600	2	BOLT
12	8354	2	PIN, HYD. CYLINDER
13	0282250	2	WASHER
14	00755153	2	PIN-COTTER 3/16 X 1-1/2 PLATED

NOTE: Items 12-14 are apart of item number 4.

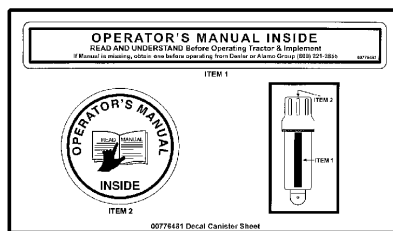
SAFETY DECAL SHEETS



2



3



1

ITEM	PART NO.	QTY.	DESCRIPTION
1	00776481	1	SHEET,MANUALCANISTER DECAL
2	00777462	1	DECAL SHEET, SE10A
3	00777463	1	DECAL SHEET, SE10A
4	1458392	1	DECAL,RED REFLECTOR (NOT SHOWN)
5	1458393	1	DECAL,YELLOW REFLECTOR (NOT SHOWN)

SERVIS-RHINO

LIMITED WARRANTY

1. LIMITED WARRANTIES

- 1.01. Servis-Rhino warrants for one year from the purchase date to the original non-commercial, governmental, or municipal purchaser ("Purchaser") and warrants for six months to the original commercial or industrial purchaser ("Purchaser") that the goods purchased are free from defects in material or workmanship.
- 1.02. Manufacturer will replace for the Purchaser any part or parts found, upon examination at one of its factories, to be defective under normal use and service due to defects in material or workmanship.
- 1.03. This limited warranty does not apply to any part of the goods which has been subjected to improper or abnormal use, negligence, alteration, modification, or accident, damaged due to lack of maintenance or use of wrong fuel, oil, or lubricants, or which has served its normal life. This limited warranty does not apply to any part of any internal combustion engine, or expendable items such as blades, shields, guards, or pneumatic tires except as specifically found in your Operator's Manual.
- 1.04. Except as provided herein, no employee, agent, Dealer, or other person is authorized to give any warranties of any nature on behalf of Manufacturer.

2. REMEDIES AND PROCEDURES.

- 2.01. This limited warranty is not effective unless the Purchaser returns the Registration and Warranty Form to Manufacturer within 30 days of purchase.
- 2.02. Purchaser claims must be made in writing to the Authorized Dealer ("Dealer") from whom Purchaser purchased the goods or an approved Authorized Dealer ("Dealer") within 30 days after Purchaser learns of the facts on which the claim is based.
- 2.03. Purchaser is responsible for returning the goods in question to the Dealer.
- 2.04. If after examining the goods and/or parts in question, Manufacturer finds them to be defective under normal use and service due to defects in material or workmanship, Manufacturer will:
 - (a) Repair or replace the defective goods or part(s) or
 - (b) Reimburse Purchaser for the cost of the part(s) and reasonable labor charges (as determined by Manufacturer) if Purchaser paid for the repair and/or replacement prior to the final determination of applicability of the warranty by Manufacturer.The choice of remedy shall belong to Manufacturer.
- 2.05. Purchaser is responsible for any labor charges exceeding a reasonable amount as determined by Manufacturer and for returning the goods to the Dealer, whether or not the claim is approved. Purchaser is responsible for the transportation cost for the goods or part(s) from the Dealer to the designated factory.

3. LIMITATION OF LIABILITY.

- 3.01. MANUFACTURER DISCLAIMS ANY EXPRESS (EXCEPT AS SET FORTH HEREIN) AND IMPLIED WARRANTIES WITH RESPECT TO THE GOODS INCLUDING, BUT NOT LIMITED TO, MERCHANTABILITY AND FITNESS FOR A PARTICULAR PURPOSE.
- 3.02. MANUFACTURER MAKES NO WARRANTY AS TO THE DESIGN, CAPABILITY, CAPACITY, OR SUITABILITY FOR USE OF THE GOODS.
- 3.03. EXCEPT AS PROVIDED HEREIN, MANUFACTURER SHALL HAVE NO LIABILITY OR RESPONSIBILITY TO PURCHASER OR ANY OTHER PERSON OR ENTITY WITH RESPECT TO ANY LIABILITY, LOSS, OR DAMAGE CAUSED OR ALLEGED TO BE CAUSED DIRECTLY OR INDIRECTLY BY THE GOODS INCLUDING, BUT NOT LIMITED TO, ANY INDIRECT, SPECIAL, CONSEQUENTIAL, OR INCIDENTAL DAMAGES RESULTING FROM THE USE OR OPERATION OF THE GOODS OR ANY BREACH OF THIS WARRANTY. NOT WITHSTANDING THE ABOVE LIMITATIONS AND WARRANTIES, MANUFACTURER'S LIABILITY HEREUNDER FOR DAMAGES INCURRED BY PURCHASER OR OTHERS SHALL NOT EXCEED THE PRICE OF THE GOODS.
- 3.04. NO ACTION ARISING OUT OF ANY CLAIMED BREACH OF THIS WARRANTY OR TRANSACTIONS UNDER THIS WARRANTY MAY BE BROUGHT MORE THAN TWO (2) YEARS AFTER THE CAUSE OF ACTION HAS OCCURRED.

4. MISCELLANEOUS.

- 4.01. Proper Venue for any lawsuits arising from or related to this limited warranty shall be only in Guadalupe County, Texas.
- 4.02. Manufacturer may waive compliance with any of the terms of this limited warranty, but no waiver of any terms shall be deemed to be a waiver of any other term.
- 4.03. If any provision of this limited warranty shall violate any applicable law and is held to be unenforceable, then the invalidity of such provision shall not invalidate any other provisions herein.
- 4.04. Applicable law may provide rights and benefits to purchaser in addition to those provided herein.

KEEP FOR YOUR RECORDS

ATTENTION: Purchaser should fill in the blanks below for his reference when buying repair parts and/or for proper machine identification when applying for warranty.

Servis-Rhino Implement Model _____ Serial Number _____

Date Purchased _____ Dealer _____

ATTENTION:
READ YOUR OPERATOR'S MANUAL

RHINO[®]
1020 S. Sangamon Ave.
Gibson City, IL 60936
800-446-5158
Email: parts@servis-rhino.com





TO THE OWNER/OPERATOR/DEALER

To keep your implement running efficiently and safely, read your manual thoroughly and follow these directions and the Safety Messages in this Manual. The Table of Contents clearly identifies each section where you can easily find the information you need.

The OCCUPATIONAL SAFETY AND HEALTH ACT (1928.51 Subpart C) makes these minimum safety requirements of tractor operators:

REQUIRED OF THE OWNER:

1. Provide a Roll-Over-Protective Structure that meets the requirements of this Standard; and
2. Provide Seatbelts that meet the requirements of this paragraph of this Standard and SAE J4C; and
3. Ensure that each employee uses such Seatbelt while the tractor is moving; and
4. Ensure that each employee tightens the Seatbelt sufficiently to confine the employee to the protected area provided by the ROPS.

REQUIRED OF THE OPERATOR

1. Securely fasten seatbelt if the tractor has a ROPS.
2. Where possible, avoid operating the tractor near ditches, embankments, and holes.
3. Reduce speed when turning, crossing slopes, and on rough, slick, or muddy surfaces.
4. Stay off slopes too steep for safe operation.
5. Watch where you are going - especially at row ends, on roads, and around trees.
6. Do not permit others to ride.
7. Operate the tractor smoothly - no jerky turns, starts, or stops.
8. Hitch only to the drawbar and hitch points recommended by the tractor manufacturer.
9. When the tractor is stopped, set brakes securely and use park lock, if available.



Keep children away from danger all day, every day...



Equip tractors with rollover protection (ROPS) and keep all machinery guards in place...



Please work, drive, play and live each day with care and concern for your safety and that of your family and fellow citizens.

