



TO THE OWNER/OPERATOR/DEALER

Cnrlko r ngo gpwly kj 'o qxkpi 't ctu'ctg't qvgp'kcm' j c| ctf qwu'Vj gtg'ku'pq'wdunkw'g'ht'c'ecw'kqwa. 'uchg/o kpf gf 'qr gtcvqt'y j q tgeqi pk gu'vj g'r qvgp'kcn'j c| ctf u'c'pf 'hmqy u'tgcupcdrg'uchgv' t tce'legu'Vj g'o cpw'cewt'gt'j cu't'guki pgf 'vj ku'ko r ngo gpv'q dg'wugf 'y kj 'cmiku'uchgv' 'gs wkr o gpv't qtr gtn' 'cwcej gf 'vq'o kpk k g'vj g'ej cpeg'qh'ceekf gpw'0

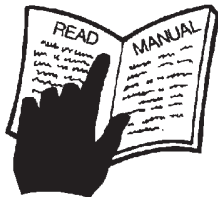
BEFORE YOU START!! Tgcf 'vj g'uchgv' 'o guuci gu'qp'vj g'lo r ngo gpv'cpf 'uj qy p'lp' { qwt 'o cpwcr0
Qdugtxg'vj g'twgu'qh'uchgv' 'cpf 'eqo o qp'ugpug#



DANGER

FAILING TO FOLLOW SAFETY MESSAGES AND OPERATING INSTRUCTIONS CAN CAUSE SERIOUS BODILY INJURY OR EVEN DEATH TO OPERATOR AND OTHERS IN THE AREA.

1.



2. NO RIDERS, NO CHILDREN OPERATORS



3. USE SAFETY SHOES, HARD HAT, SAFETY GLASSES, SEAT BELTS, & ROPS



4. BLOCK UP SECURELY BEFORE WORKING UNDER.



1. Study and understand Operator's Manuals, Safety Signs, and Instructional Decals for tractor & flail mower to prevent misuse, abuse, & accidents. Practice before operating mower in a confined area or near passersby.

- Learn how to stop engine suddenly in an emergency. Be alert for passersby and especially children.

2. Allow no children on or near implement or tractor. Allow no riders on tractor or implement. Falling off can cause serious injury or death from being runover by tractor or mower or contact with Flail Mower Blades.

3. Operate only with tractor having Roll-Over Protective Structure (ROPS) and with seatbelt fastened securely and snugly to prevent injury and possible death from falling off or tractor overturn. Personal Protective Equipment such as Hard Hat, Safety Glasses, Safety Shoes, and Ear Plugs are recommended.

4. Block up or support raised machine and all lifted components securely before putting hands or feet under or working underneath any lifted component to prevent crushing injury or death from sudden dropping or inadvertent operation of controls. Make certain that area is clear before lowering or folding.

5. Before transporting, put Lift Lever in detent or full-lift position. Install Transport Safety Devices securely on folding implements. Slow down when turning and on hillsides.

- Install **Restrictor in folding circuit to slow down lowering and unfolding if action is faster than is desirable.

6. Make certain that SMV sign, Warning Lights, and Reflectors are clearly visible. Follow local traffic codes.

7. Never operate with Flail Mower or Folding Section raised if passersby, bystanders or traffic are in the area to reduce possibility of injury or death from objects thrown by Blades under Shields or implement structure.

8. Before dismounting, secure flail mower in transport position or lower to ground.

• Put tractor in park or set brake, disengage PTO, stop engine, remove key, and wait until noise of rotation has ceased to prevent entanglement in rotating parts which may cause injury or death.

- Never mount or dismount a moving vehicle. Crushing from runover may cause injury or death.

5. TRANSPORT SAFELY, LOCK UP.



Y CTTCP VJ R QTO CVIQ

6. USE SMV, LIGHTS, & REFLECTORS.



7. DO NOT OPERATE WITH MOWER OR WING RAISED.



8. DO NOT MOUNT OR DISMOUNT WHILE MOVING.



002369

Tgcf 'cpf 'w'pf gtucpf 'vj g'eqo r ngv'Y cttcpv' 'Ucvg' gpv'hw'pf 'lp'vj ku'O cpwcr0'Hkml'q'w'vj g'Y cttcpv' 'Tgi kmtcvkp'Hqto kp'hwn'c'pf 'tgwtp'k'y kj lp'52'F c { u'O cng'egt'c'lp'vj g'Ugt'kriP wo dgt'qh'vj g'O cej kpg'ku'tgeqtf gf 'qp'vj g'Y cttcpv' 'Ectf cpf 'qp'vj g'Y cttcpv' 'Hqto 'vj cv' qwt'g'c'lp'0Vj g'wug'qh'Sy km'hk\$'t ctu'y kn'k'q'k' { qwt'y cttcpv' 'cpf 'ecp'ecwug'ecw'utqr j k hckw'g'y kj 'r quukdr'g'lp'lw { 'qt'f gc'vj 0

PARTS SECTION

PARTS ORDERING GUIDE

V@Á||, ā*Ā•d~&ā}•Ā^Ā~!^āĀĀ@||Āā āæ^Ā^^ā/^•Ā^|æĀāĀ!|!ĀĀ!|&••ā*
]~!&æ^Ā!ā^!•Ā!Ā@Ā~ā{^}āĀ@Ā^&ā}È

FEV@Áæ•Á^&ç}ÁÁ|^æ^àÁÁ*æçÁ^~^}&ÁçáÁ|[_]â*Á-Áæ•Á@æÁ||}*ÁÁ@
àæÁÁæç^Áæ|^áÁÁ@Áæ}æÉÁæ•{à!•ÁçáÁ^•&âç}•Áç^Áç^}ÁÁ@||
||&æÁ@Áæ•ÁçáÁæçç•Á^~ã^áÈ

GEV@AJ~|&@^AJ|a^|A~•o&|ã^A@Aæ^Aaãa|••A~A@A^!•[}A|A|^*æãæ}
[|a|a^*A@Aæ•E|Q|A|Q~|aA^A&@^aEaãA[••a|E@A^|æA{à|A~A@Aæ&^
f|A@A@Aæ•A^A|a^|aE

HÄ@Ü~!&æ^Ä!ä^!Ä~•ö/æ|Ä öä@Ä~ æ ä Ä-Äæ@ÄæÄ@Ä { } | ^ Ä ä äÄ || ^ & Ä æ
} ~ { ä^!Ä^Ä~!Ä Ä &~ ä^!Ä|Ä!ä •Ä ä ä@ÄæÄÄ æ ^Ä-Ä@ÄæÄ

| ÈÁ@Á æ ˇ æ&ç | ^| Á^•^| ç^• Á@Áã @Á Á ˇ à• çã ç Áæ• Á @| ^Áæ | ææ|^È

1 ĦÜ [{ ^ Ħ æ o Ħ ^ Ħ } | ā c ā Ħ { • Ħ @ Ħ Ħ ^ Ħ] ^ & ā Ħ | [ā ~ & Ħ } Ħ { • Ħ [Ħ [| { æ Ħ ^ Ħ & Ħ ā Ħ ā
 æ ^ Ħ ~ ā b & Ħ Ħ] ^ & ā Ħ @ ā ā * ĦÜ Ħ ~ Ħ • Ħ Ħ ~ [cā Ħ } Ħ [Ħ ~ & Ħ æ o Ħ ^ Ħ [Ħ ^ Ħ] ā ā * Ħ æ
 Ü ~ | & Ħ ^ Ħ | ā Ħ Ħ

î ÈÄ@Á æ ˇ ~æç | ^ | Á ^ • ^ | ç ^ • Á @ Á ã @ Ä Á & @ * ^ Á | æ ^ • Á ã @ ˇ º Á | ä | Á | ç ^ È

PUVÒK Ú|[^]æ[^]Á[^]À[^]Á[^]Á[^]@[^]Á[^]æ[^]À[^]Á[^]&ç[^]|[^]Á[^]Á[^]@[^]Á[^][[^]][^]Á[^]Á[^]@[^]Á[^]æ[^]æ[^]Á[^]|[^]Á[^]@[^]Á[^]|[^][[^]][^]Á[^]
 Úæ[^]Á[^]æ[^]~[^]à[^]Á[^]Á[^]@[^]|[^]Á[^]à[^]Á[^]ā[^]*[^]Á[^]Á[^]|[^]æ[^]Á[^]~[^]Á[^]Á[^]æ[^]À[^]Á[^]&æ[^]È

[illegible]**RHINO®**

1020 S. Sangamon Ave.

Gibson City, IL 60936

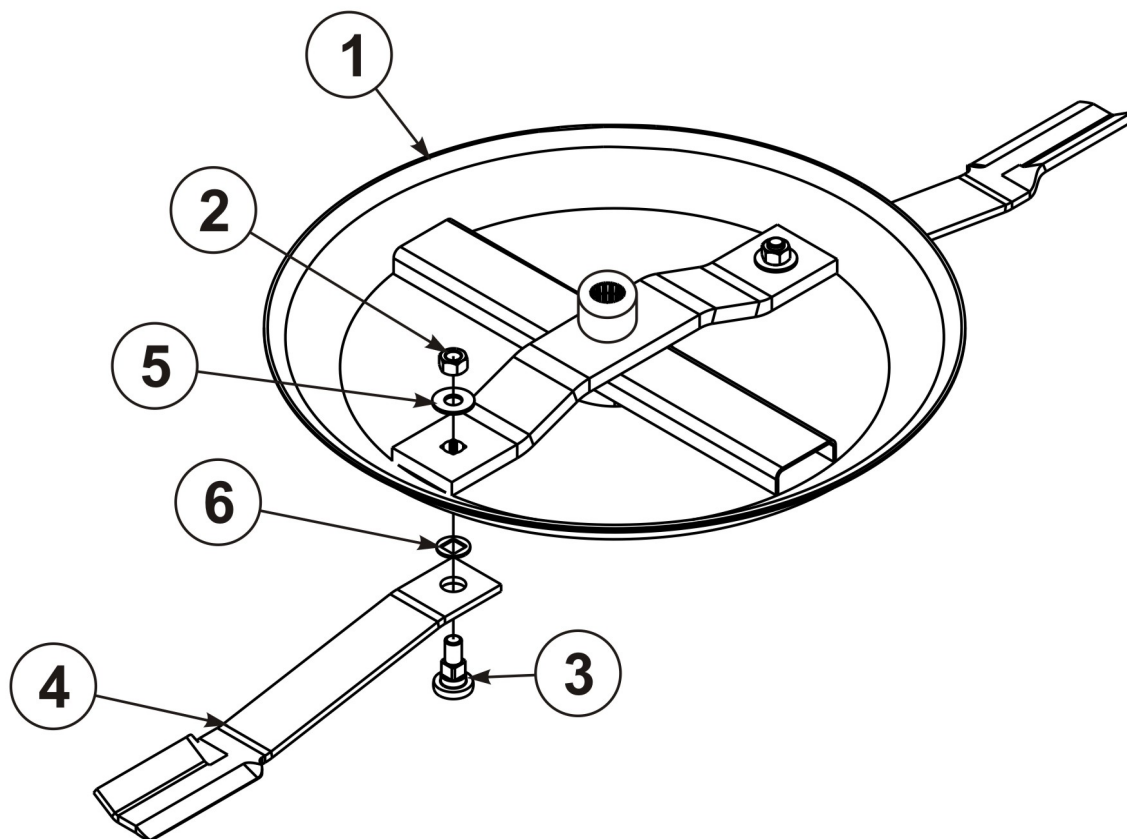
800-446-5158

Email: parts@servis-rhino.com

PART NAME INDEX

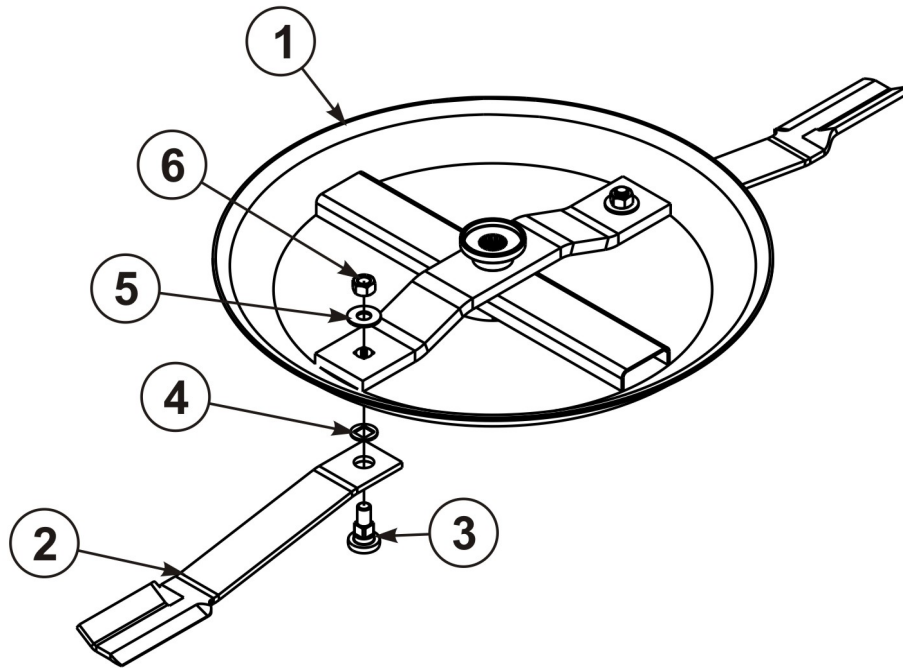
DNCF G'RCP 'CUUGO DN['UGTKN%3676'CP F 'DGNQY	6
DNCF G'RCP 'CUUGO DN['UGTKN%3872/'EWTGP V	7
ECUVGT'HQTM'Y J GGN'CUUGO DN[8
EJ C&I C'WTF 'CUUGO DN['/'HTQP V	9
EJ C&I C'WTF 'CUUGO DN['/'TGCT	:
F GHNGEVQT'CUUGO DN['/'HTQP V	;
F GHNGEVQT'CUUGO DN['/'TGCT	32
FT&GNP G'CUUGO DN[33
UNR'ENWEJ 0.....	34
I GCTDQZ 'CUUGO DN['UGTKN%3676'CP F 'DGNQY	35
I GCTDQZ 'CUUGO DN['UGTKN%3872/'EWTGP V	37
J &EJ 'CUUGO DN['*ECV'KUVCP FCTF -	39
J &EJ 'CUUGO DN['*S W&EM'J &EJ -	3:
UJ KGNF 'CUUGO DN['UGTKN%3676'CP F 'DGNQY	3;
UJ KGNF 'CUUGO DN['UGTKN%3872/'EWTGP V	42

BLADE PAN ASSEMBLY SERIAL#11454 AND BELOW



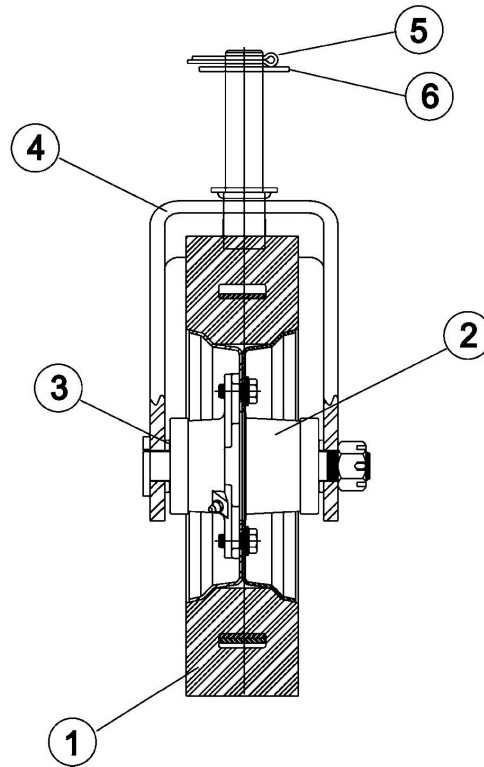
ITEM	PART NO.	QTY.	DESCRIPTION
3	229: 2995	3	Y NFO V.'DNCFG'RCP
4	7LTE38362	4	NQEMP'W'3"/36"VNF'VI'E\R
5	: 473	4	DNCFG'DQNV'URGE'KN
6	229: 2: 25	4	DNCFG.'HCP'EEY.'4: /316'EVT/VIR
7	: 438	4	Y CUI GT.'UVTWEVWTCN'3
8	229: 2: 2;	4	Y CUI GT'3/; 186'US 'J QNG'Z'4'QF

BLADE PAN ASSEMBLY SERIAL#11650 - CURRENT



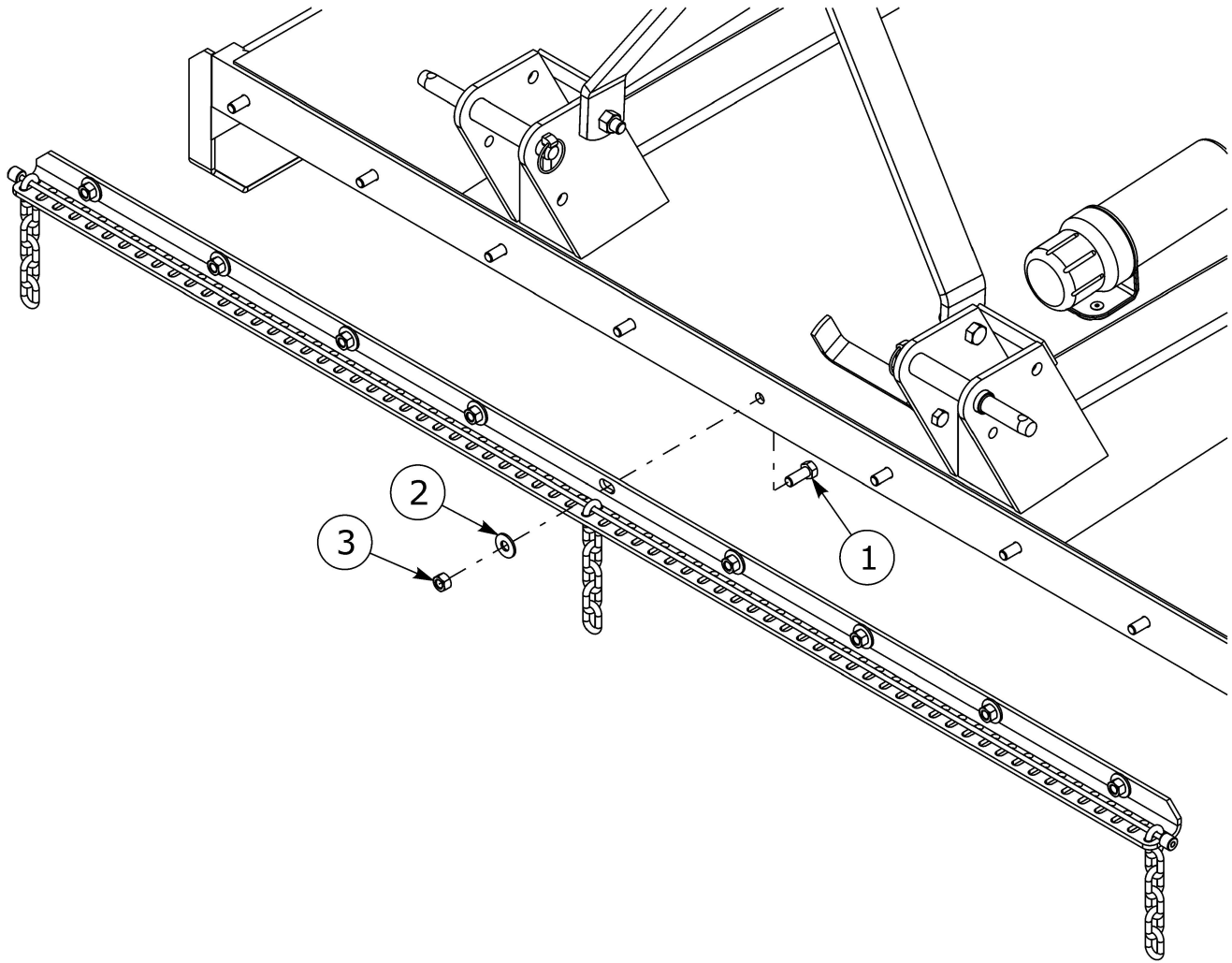
ITEM	PART NO.	QTY.	DESCRIPTION
1	00786564	1	WLDMT, BLADE PAN (27" CTRS)
2	00780803	2	BLADE, FAN CCW, 28-1/4 CTR-TIP
3	8251	2	BLADE BOLT SPECIAL
4	00780809	2	WASHER 1-9/64 SQ HOLE X 2 OD
5	9216	2	WASHER, STRUCTURAL 1
6	5JRC16140	2	LOCKNUT 1 -14 TLDT GC ZP

CASTER FORK WHEEL ASSEMBLY



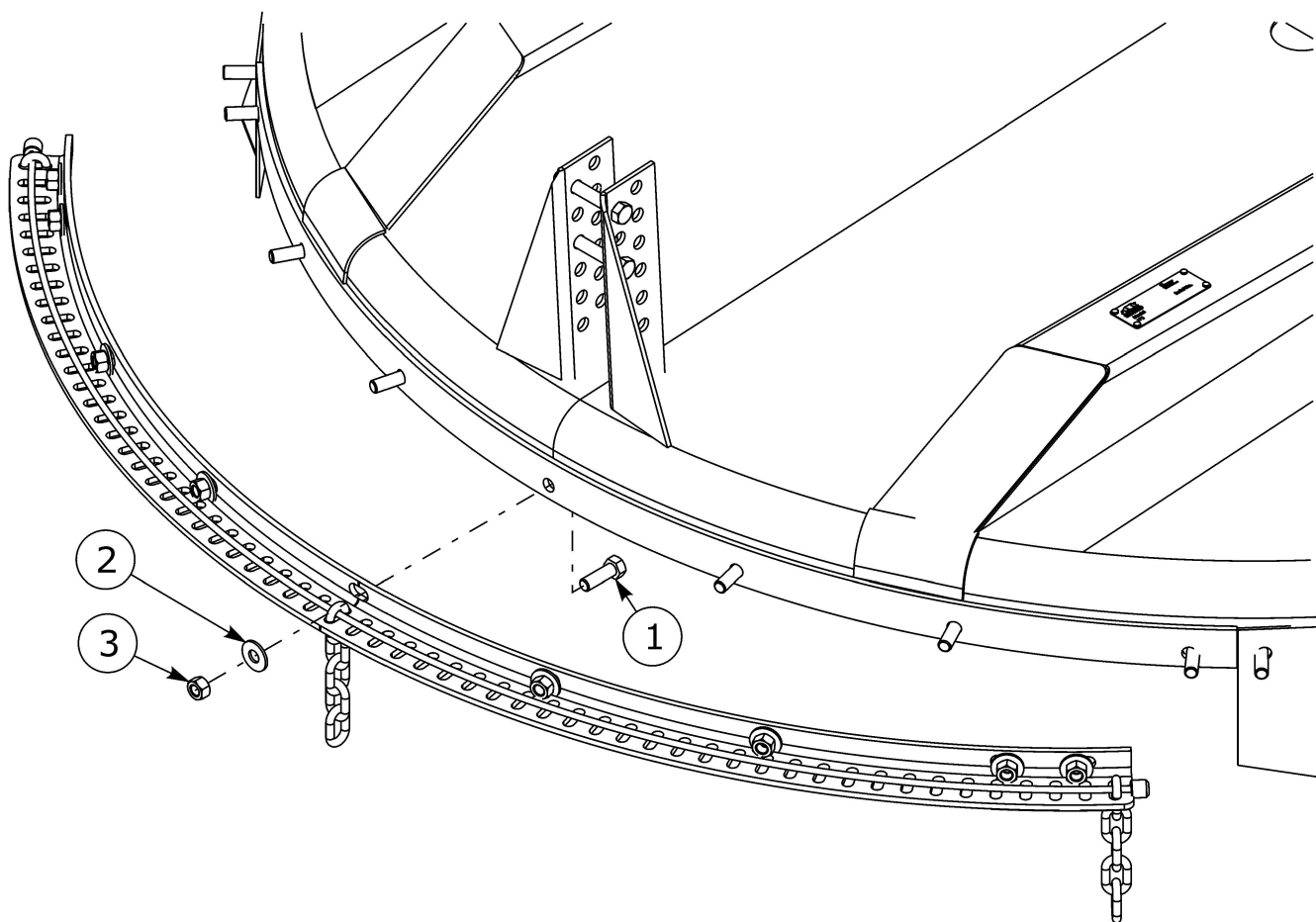
ITEM	PART NO.	QTY.	DESCRIPTION
	00776210	1	AG SE CASTER FORK WHEEL ASSY LAMINATED
1	373024H	1	WHEEL & TIRE ASSY
2	00776214	1	HUB 4 BOLT
3	00776217	2	WASHER FLAT 026 X 044 X 4 FLAT
4	00776224	1	FORK CASTER ASSEMBLY
5	00036900	1	PIN-COTTER 1/4 X 2-1/2
6	152B000	1	WASHER

CHAINGAURD ASSEMBLY - FRONT



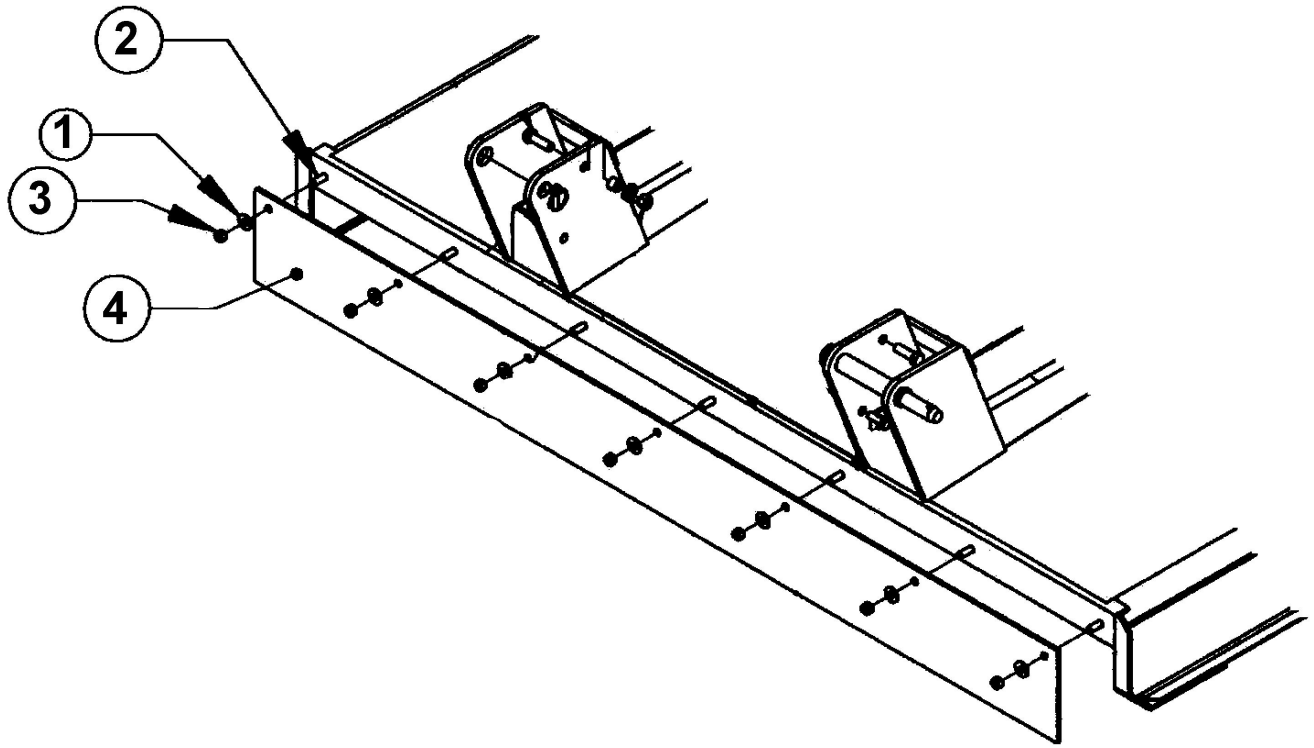
ITEM	PART NO.	QTY.	DESCRIPTION
	00781263	1	CHAINGUARD ASSEMBLY FRONT
1	02030700	9	HHCS 1/2-13UNC 1-1/4 PL5
2	00002700	9	FLATWASHER 1/2 PL STD
3	00001800	9	LOCKNUT TLM 1/2 NC PLB

CHAINGAURD ASSEMBLY - REAR



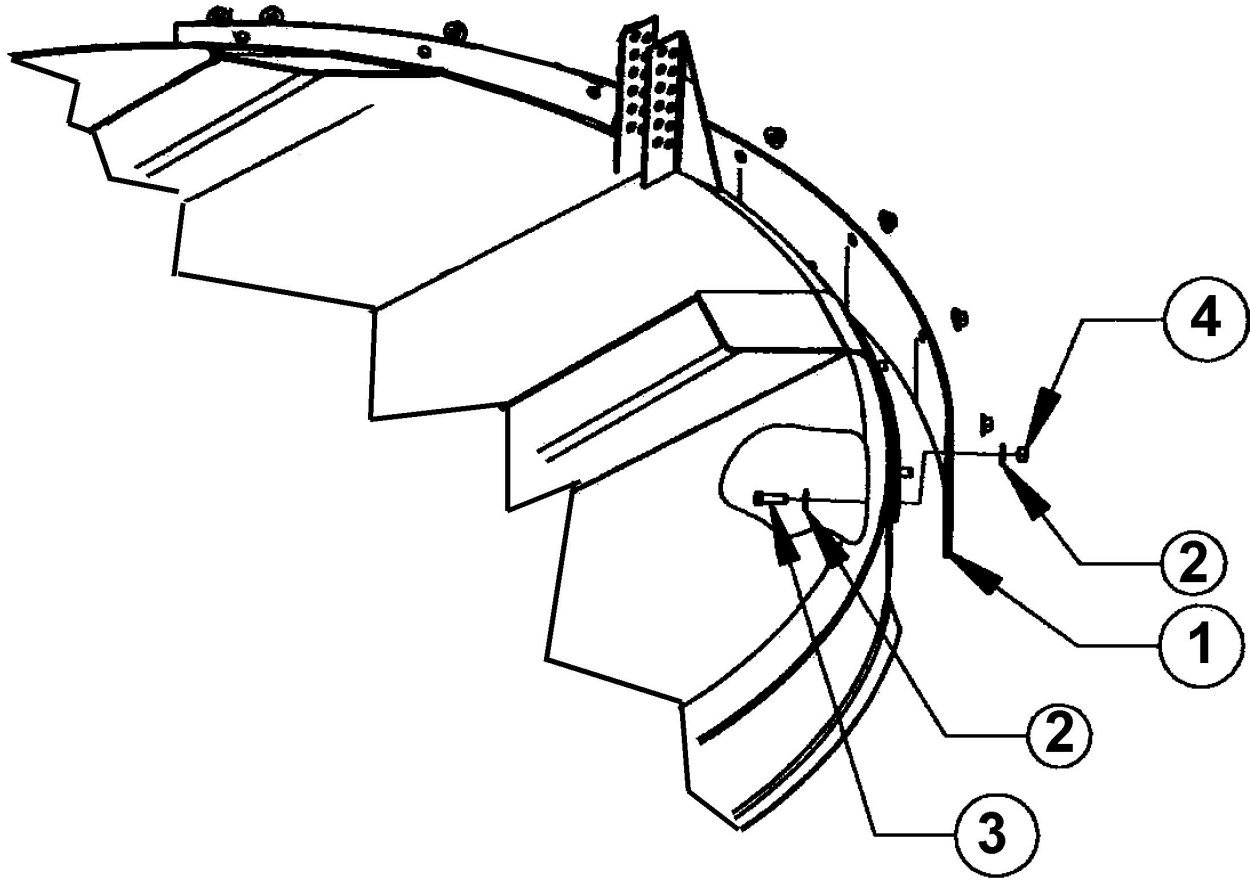
ITEM	PART NO.	QTY.	DESCRIPTION
	00781262	1	CHAINGUARD ASSEMBLY REAR
1	00748823	9	HHCS 1/2-13UNC 1-1/2 PL5
2	00002700	9	FLATWASHER 1/2 PL STD
3	00001800	9	LOCKNUT TLM 1/2 NC PLB

DEFLECTOR ASSEMBLY - FRONT



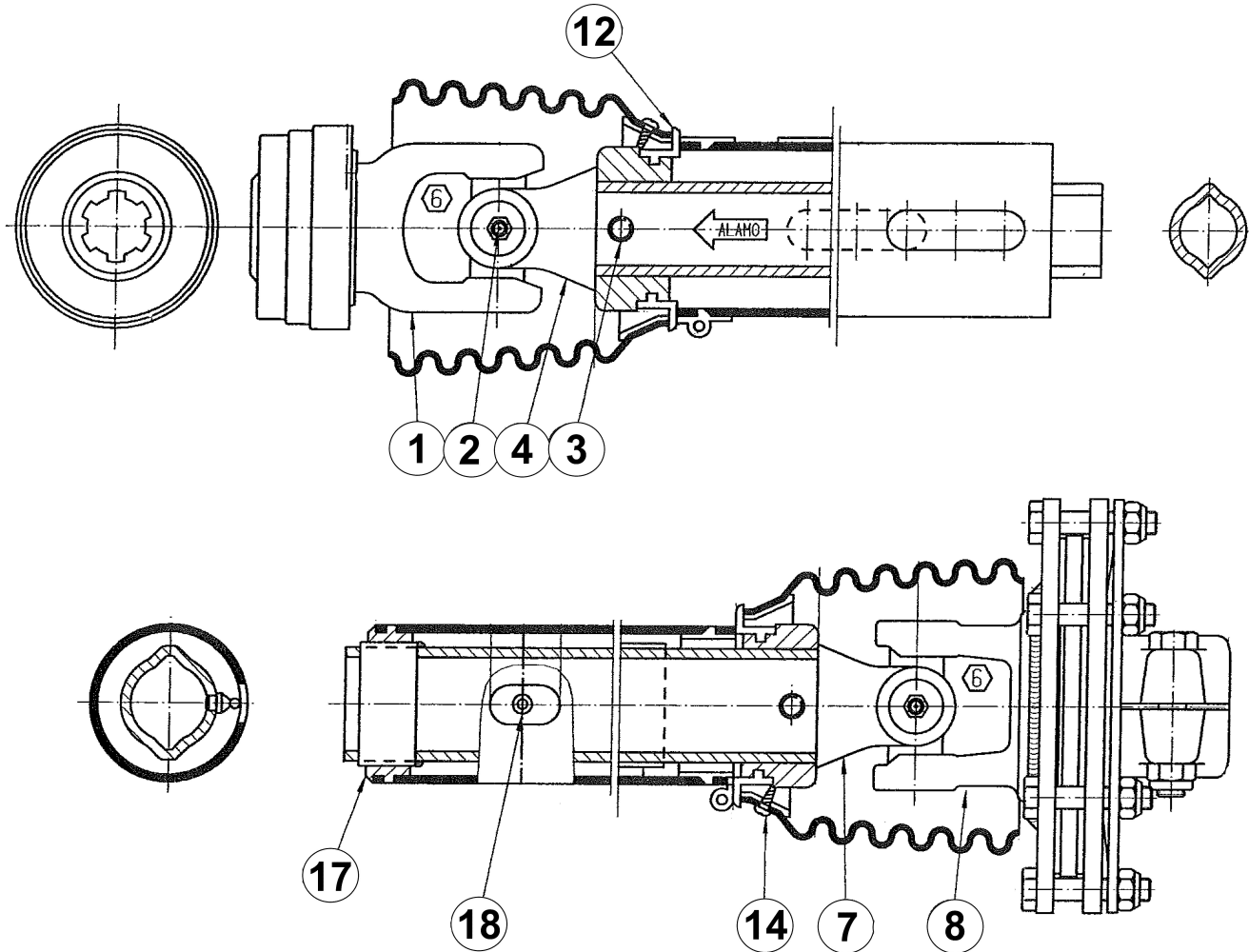
ITEM	PART NO.	QTY.	DESCRIPTION
1	00002700	7	FLATWASHER 1/2 PL STD
2	00748823	7	HHCS 1/2-13UNC 1-1/2 PL5
3	00001800	7	LOCKNUT TLM 1/2 NC PLB
4	00780787	1	PANEL, FRONT RUBBER DEFLECTOR

DEFLECTOR ASSEMBLY - REAR



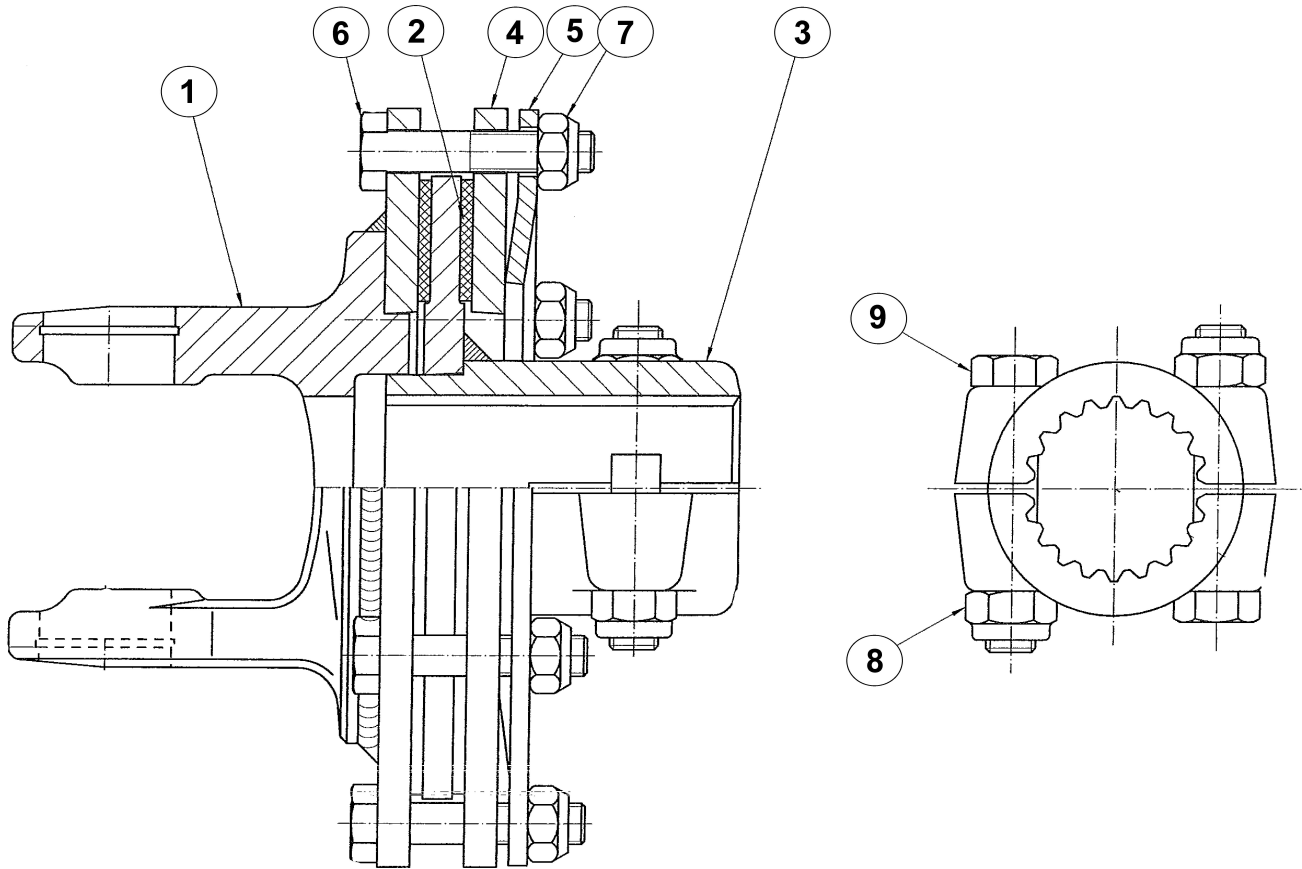
ITEM	PART NO.	QTY.	DESCRIPTION
1	00781130	1	PANEL, REAR RUBBER DEF. SE7A
2	00002700	7	FLATWASHER 1/2 PL STD
3	00748823	7	HHCS 1/2-13UNC 1-1/2 PL5
4	00001800	7	LOCKNUT TLM 1/2 NC PLB

DRIVELINE ASSEMBLY



ITEM	PART NO.	QTY.	DESCRIPTION
1	00779516	1	YOKE 1 3/8" -6 SPL.
2	00779517	2	CROSS & BEARING KIT
3	00756934	2	PIN,ROLL 10 X 80
4	8982	1	YOKE INBOARD
7	8387	1	INBOARD YOKE
8	00779512	1	FRICTION CLUTCH
12	8393	2	BEARING RING
14	00759217	2	SCREW 1/2 LG #8
17	8974	1	PAN SUPPORT BEARING
18	1416601	1	ZERK
-	00779513	1	SHIELD KIT
	00781360	1	COMPLETE DRIVELINE ASSY.

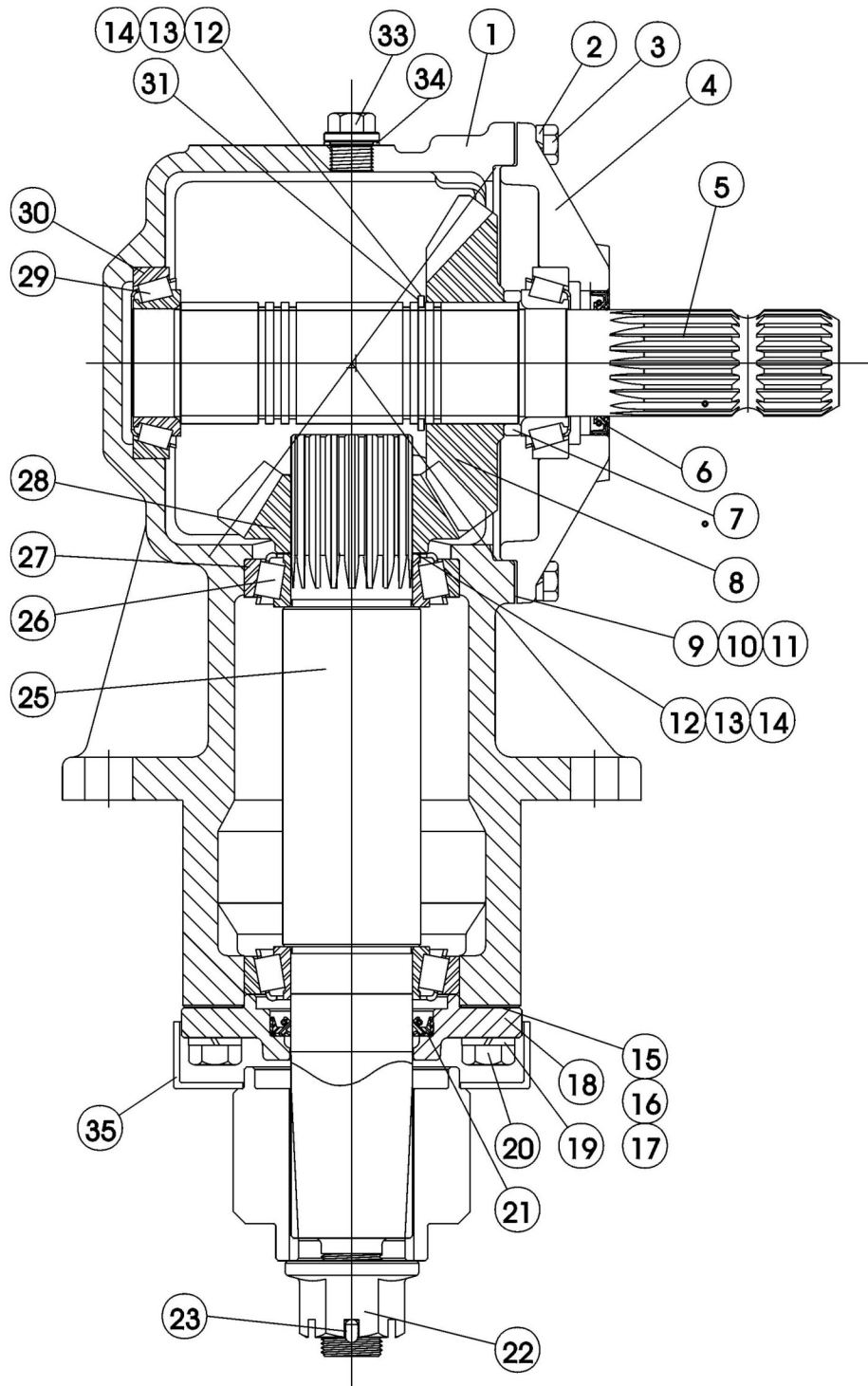
SLIP CLUTCH



ITEM	PART NO.	QTY.	DESCRIPTION
	00779512	1	SLIP CLUTCH
1	00779511	1	FLANG YOKE
2	00754202	2	RING,CLUTCH LINING
3	00775322	1	HUB 1 3/4-20 I.C.
4	00775323	1	PLATE, THRUST
5	00775324	1	SPRING, BELLEVILLE
6	61064C8	6	M10X1.5X50 GR.8.8 HEX CAPSCREW
7	00765961	6	NUT MET TLE 10MM-P1.5 PL
8	00772648	2	NUT,HEX TOP LOCK-M12 X 1.75
9	61076C8	2	M12X1.75X65 GR.8.8 HEX CAPSCRE

PAGE LEFT BLANK INTENTIONALLY

GEARBOX ASSEMBLY SERIAL#11454 AND BELOW

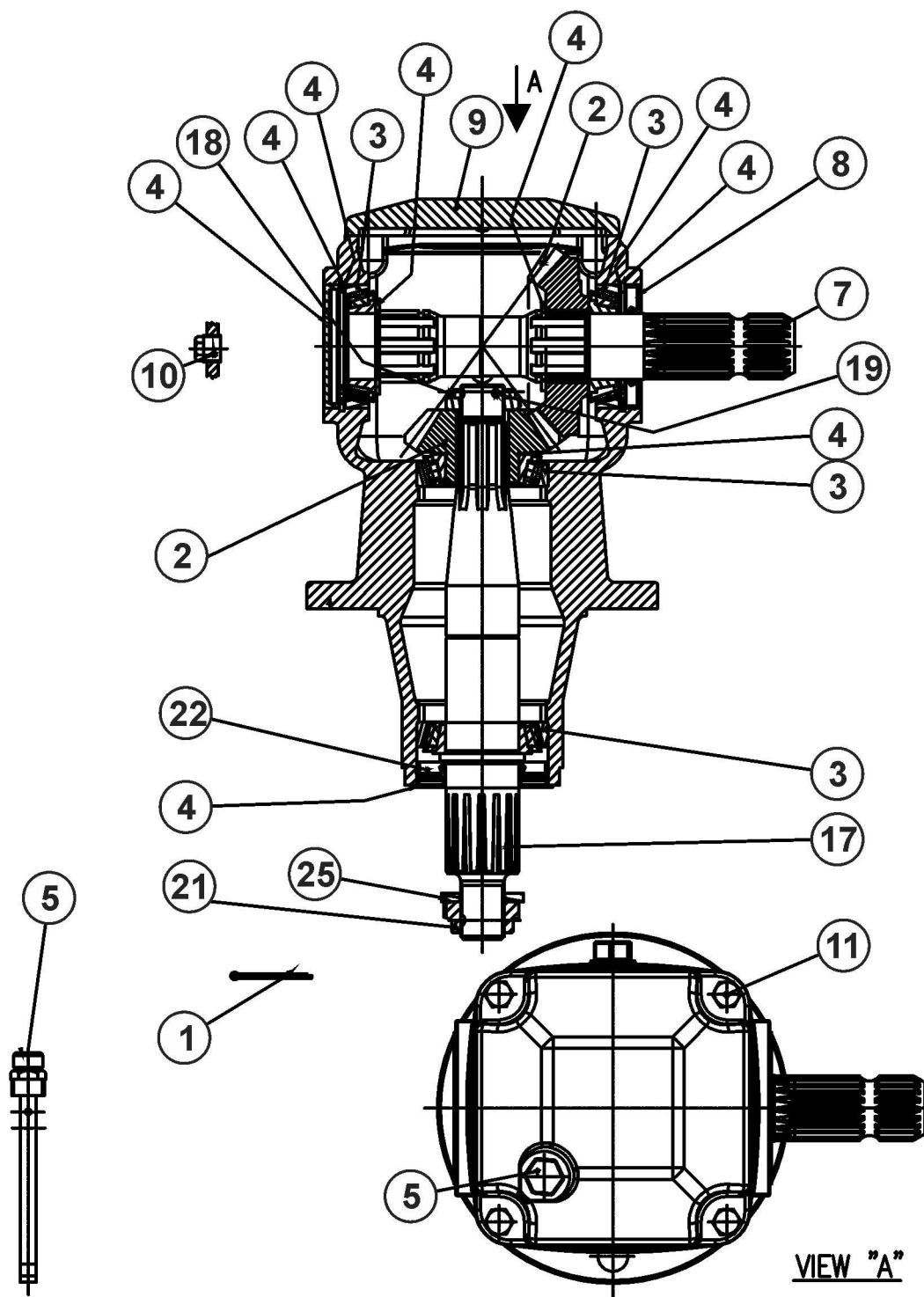


GEARBOX ASSEMBLY SERIAL#11454 AND BELOW

Continued...

ITEM	PART NO.	QTY.	DESCRIPTION
	00780772P	1	ASY,GEARBOX, 1:1.35SU NON-LUBED
1	00781308	1	HOUSING, SUPER 161 EO
2	00755954	8	LOCKWASHER M10
3	00758659	8	HEXB METRIC 10-P1.5 - 32MM PL5
4	00770740	1	CAP,INPUT
5	00781309	1	INPUT SHAFT, 1-3/4-20
6	00758653	1	SEAL 1-3/4IDX2.378OD
7	00781310	1	GEAR SPACER
8	00781211	1	ASY, REAR C.G. SE6A
9	00758646	1	SHIM, ADJUSTMENT - .004"
10	00758647	1	SHIM, ADJUSTMENT - .010"
11	00758648	1	SHIM ,ADJUSTMENT - .020"
12	00762153	1	SHIM .016
13	00758667	1	SHIM .012 2.44 O.D.
14	00758668	1	SHIM,0.020 2.44 O.D.
15	00758676	1	GASKET, .004 OR .1M
16	00758677	1	GASKET, .010 OR .25
17	00758678	1	GASKET,0.5 OUTPUT CA
18	00752155	1	CAP BEARING RETAINING
19	00001300	4	LOCKWASHER 1/2 PL STD
20	02959661	4	HEXB, M12-P1.75 X 35MM PL8.8
21	00748519	1	OIL SEAL
22	00758692	1	NUT SLOTTED HEX FLG 1-14UNS PL
23	00606000	1	PIN,COTTER 3/16X2
25	00781312	1	OUTPUT SHAFT
26	00748522	2	BEARING CONE
27	00020600	2	BEARING CUP 362
28	00781313	1	14 TOOTH GEAR
29	00748527	2	BEARING CONE TIMKEN #LM603049
30	00748525	2	BEARING CUP
31	00758660	1	RING,RETAINING IEG 21-001
32	00762144	1	BAR-STRAP (BLACK)
33	00770737	2	LEVEL PLUG M18 X 1.5
34	00769321	3	WASHER,SEALING,17.8M
35	00770727	1	PROTECTOR, SEAL

GEARBOX ASSEMBLY SERIAL#11650 - CURRENT

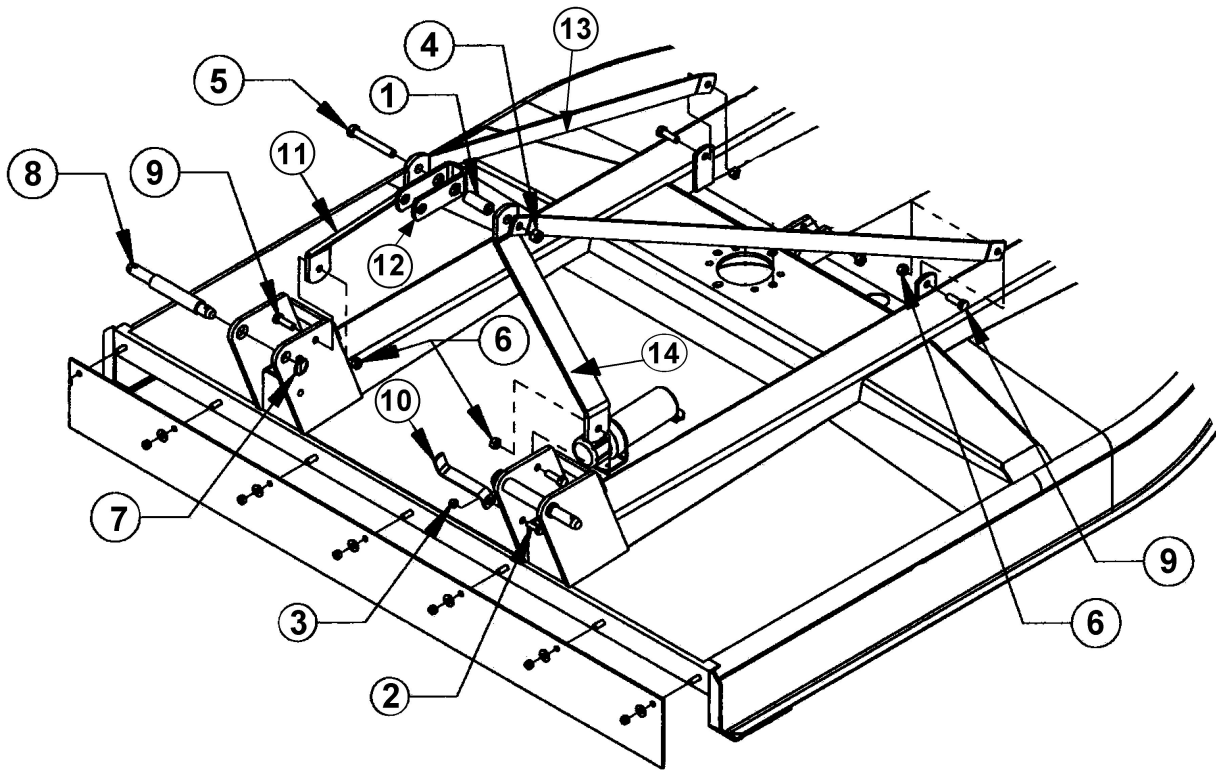


GEARBOX ASSEMBLY SERIAL#11650 - CURRENT

Continued...

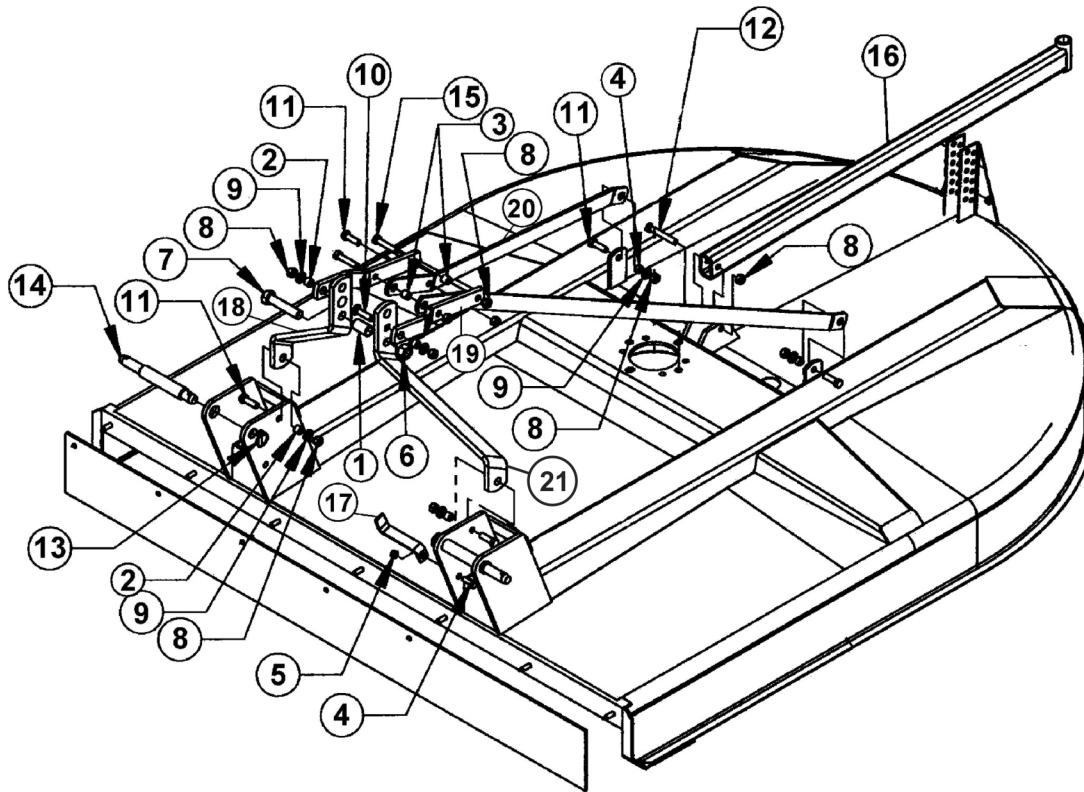
ITEM	PART NO.	QTY.	DESCRIPTION
	00785793	1	ASY,GEARBOX - NON-LUBED - GIF(GEAR IN FRONT) 540 RPM,1:1.35 RATIO,1-3/4-20 SPLINE
1	2716423	1	PIN,COTTER B6 X 60
2	00786719	1	KIT,BEVEL GEAR
3	00786292	1	KIT,ROLLER BEARING
4	00786294	1	KIT,SEAL & SHIM
5	00758484	1	DIPSTICK VENT PLUG 1/2" - FILL
7	00786287	1	SHAFT,INPUT - 1-3/4-20 SPL.
:	007: 84; 3	1	QK"UGCN - 67O O X : 7O O X 32O O
9	00786305	1	COVER,GEAR BOX
10	00755633	1	PLUG,SOLID GAS - 3/8"
11	00754764	4	HEXB M10 X 1.25 X 20 PL.8.8
17	00786288	1	SHAFT,OUTPUT
18	00755621	1	NUT,CASTLE - M30 X 1.5
19	70499	1	PIN,COTTER - B5 X 60
21	00755624	1	NUT,CASTLE - M30 X 2.0
24	00777849	1	QK"UGCN - 72O O X ; 2O O X 32O O
25	00755623	1	WASHER,BOLT - 31 X 56 X 6

HITCH ASSEMBLY (CAT II STANDARD)



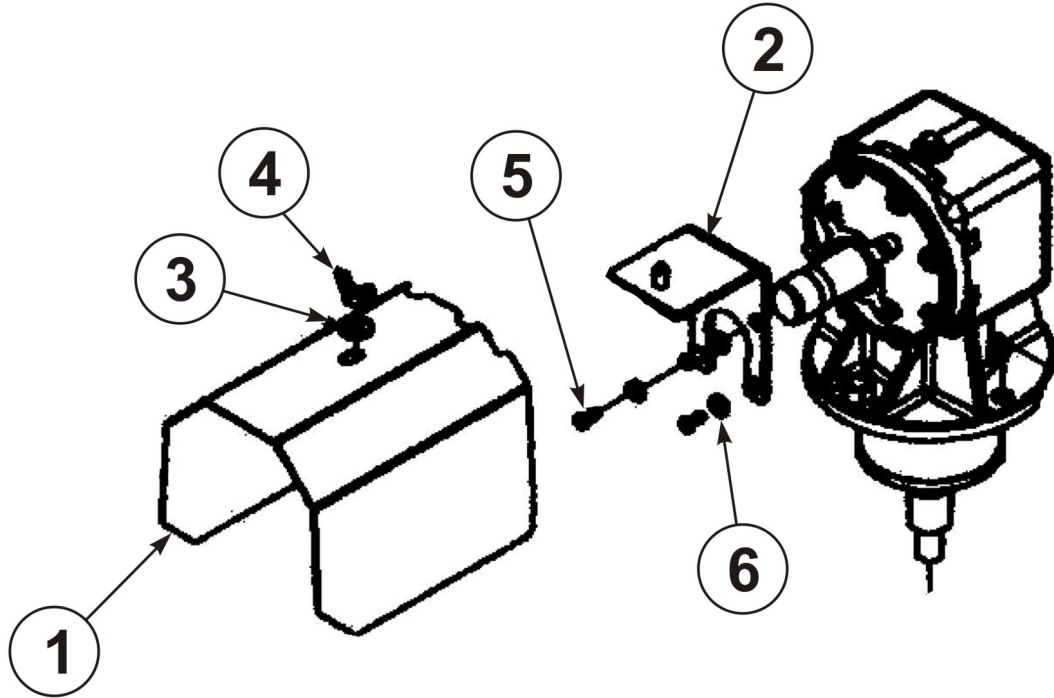
ITEM	PART NO.	QTY.	DESCRIPTION
1	00757953	1	BUSHING 1-1/4X7/32X3 A-FRAME
2	00748823	17	HHCS 1/2-13UNC 1-1/2 PL5
3	00001800	19	LOCKNUT TLM 1/2 NC PLB
4	00037200	5	NUT 3/4-NC TOPLOCK GRC PL
5	5312316	4	WASHER, 3/4" HARDENED
6	00695100	5	LOCKNUT TOPLOCK 5/8NC PLB
7	2196	2	CLIP (LYNCH PIN), 13/32 DIA.
8	69141	2	PIN, HITCH CAT II & III
9	02845500	4	HEXB 5/8 NC 2 PL5
10	00780663	1	FLAT, DRIVELINE STORAGE
11	00781355	2	FLAT, A-FRAME
12	00760959	2	FLAT-TOP LINK
13	00781354	2	FLAT, REAR BRACE
14	00783577	1	FLAT, A-FRAME

HITCH ASSEMBLY (QUICK HITCH)



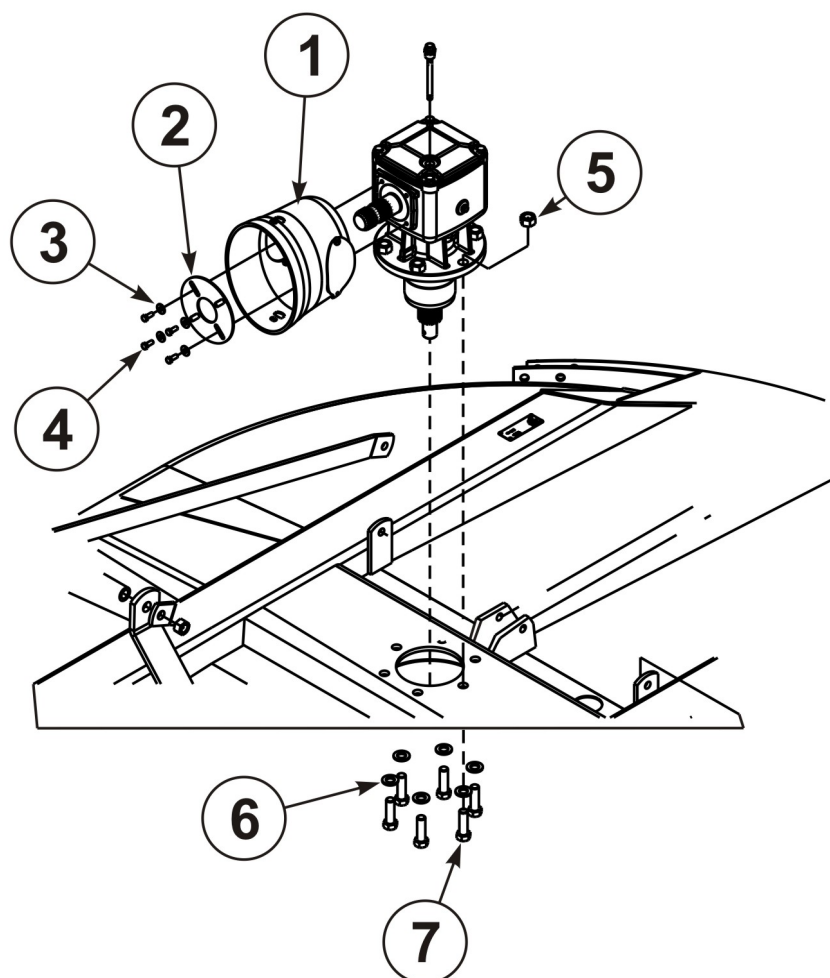
ITEM	PART NO.	QTY.	DESCRIPTION
1	0758550031	1	ORDER 165 MIN HT BUSHING
2	0732020020	4	BUSHING
3	00780592	2	BUSHING, A-FRAME TOGGLE
4	00761724	2	BUSHING HITCH
5	00001800	19	LOCKNUT TLM 1/2 NC PLB
6	5JRC16140	1	NUT TOPLOCK 1-14
7	7AH5161436	1	HHCS 1-14x4 1/2 PL5
8	00695100	10	LOCKNUT TOPLOCK 5/8NC PLB
9	00756077	6	WASHER, 5/8 HARDENED CARB
10	2101120	2	5/8 NC X 2-1/2 PL5 HEXB 5/8 NC
11	02845500	5	2 PL5
12	02845700	1	HHCS 5/8 NC 4 PL5
13	2196	2	CLIP (LYNCH PIN), 13/32 DIA.
14	69141	2	PIN, HITCH CAT II & III
15	02845600	2	HEXB 5/8 NC 3 PL5 WELDMENT,
16	00780777	1	T/W BEAM 184 FLAT,
17	00780663	1	DRIVELINE STORAGE FLAT, A-
18	00788932	1	FRAME RH
19	00781117	2	FLAT, TOP LINK TOGGLE - 284
20	00780785	2	FLAT, REAR BRACE
41	00788933	1	FLAT, A-FRAME NH

SHIELD ASSEMBLY SERIAL#11454 AND BELOW



ITEM	PART NO.	QTY.	DESCRIPTION
1	00779428	1	WDMT,SHIELD
2	00781097	1	WDMT,SHIELD BRACKET
3	00002700	1	FLATWASHER 1/2 PL STD
4	5F8130	1	1/2 NC WING NUT
5	02958784	4	BOLT METRIC 8XP1.25X20MM PL8.8
6	00023500	4	FLATWASHER 5/16 PL

SHIELD ASSEMBLY SERIAL#11650 - CURRENT



ITEM	PART NO.	QTY.	DESCRIPTION
1	00785575	1	WDMT,SHIELD
2	00785574	1	GEARBOX SHIELD INNER SUPPORT RING
3	00023500	4	FLATWASHER 5/16 PL
4	02958784	4	BOLT METRIC 8XP1.25X20MM PL8.8
5	00037200	6	LOCKNUT 3/4" NC TLM PLC
6	5312316	6	WASHER, 3/4" HARDENED
7	00037100	6	HEXB, 3/4" NC 2-1/2" PL5

SERVIS-RHINO

LIMITED WARRANTY

1. LIMITED WARRANTIES

- 1.01. Servis-Rhino warrants for one year from the purchase date to the original non-commercial, governmental, or municipal purchaser ("Purchaser") and warrants for six months to the original commercial or industrial purchaser ("Purchaser") that the goods purchased are free from defects in material or workmanship.
- 1.02. Manufacturer will replace for the Purchaser any part or parts found, upon examination at one of its factories, to be defective under normal use and service due to defects in material or workmanship.
- 1.03. This limited warranty does not apply to any part of the goods which has been subjected to improper or abnormal use, negligence, alteration, modification, or accident, damaged due to lack of maintenance or use of wrong fuel, oil, or lubricants, or which has served its normal life. This limited warranty does not apply to any part of any internal combustion engine, or expendable items such as blades, shields, guards, or pneumatic tires except as specifically found in your Operator's Manual.
- 1.04. Except as provided herein, no employee, agent, Dealer, or other person is authorized to give any warranties of any nature on behalf of Manufacturer.

2. REMEDIES AND PROCEDURES.

- 2.01. This limited warranty is not effective unless the Purchaser returns the Registration and Warranty Form to Manufacturer within 30 days of purchase.
- 2.02. Purchaser claims must be made in writing to the Authorized Dealer ("Dealer") from whom Purchaser purchased the goods or an approved Authorized Dealer ("Dealer") within 30 days after Purchaser learns of the facts on which the claim is based.
- 2.03. Purchaser is responsible for returning the goods in question to the Dealer.
- 2.04. If after examining the goods and/or parts in question, Manufacturer finds them to be defective under normal use and service due to defects in material or workmanship, Manufacturer will:
 - (a) Repair or replace the defective goods or part(s) or
 - (b) Reimburse Purchaser for the cost of the part(s) and reasonable labor charges (as determined by Manufacturer) if Purchaser paid for the repair and/or replacement prior to the final determination of applicability of the warranty by Manufacturer.The choice of remedy shall belong to Manufacturer.
- 2.05. Purchaser is responsible for any labor charges exceeding a reasonable amount as determined by Manufacturer and for returning the goods to the Dealer, whether or not the claim is approved. Purchaser is responsible for the transportation cost for the goods or part(s) from the Dealer to the designated factory.

3. LIMITATION OF LIABILITY.

- 3.01. MANUFACTURER DISCLAIMS ANY EXPRESS (EXCEPT AS SET FORTH HEREIN) AND IMPLIED WARRANTIES WITH RESPECT TO THE GOODS INCLUDING, BUT NOT LIMITED TO, MERCHANTABILITY AND FITNESS FOR A PARTICULAR PURPOSE.
- 3.02. MANUFACTURER MAKES NO WARRANTY AS TO THE DESIGN, CAPABILITY, CAPACITY, OR SUITABILITY FOR USE OF THE GOODS.
- 3.03. EXCEPT AS PROVIDED HEREIN, MANUFACTURER SHALL HAVE NO LIABILITY OR RESPONSIBILITY TO PURCHASER OR ANY OTHER PERSON OR ENTITY WITH RESPECT TO ANY LIABILITY, LOSS, OR DAMAGE CAUSED OR ALLEGED TO BE CAUSED DIRECTLY OR INDIRECTLY BY THE GOODS INCLUDING, BUT NOT LIMITED TO, ANY INDIRECT, SPECIAL, CONSEQUENTIAL, OR INCIDENTAL DAMAGES RESULTING FROM THE USE OR OPERATION OF THE GOODS OR ANY BREACH OF THIS WARRANTY. NOTWITHSTANDING THE ABOVE LIMITATIONS AND WARRANTIES, MANUFACTURER'S LIABILITY HEREUNDER FOR DAMAGES INCURRED BY PURCHASER OR OTHERS SHALL NOT EXCEED THE PRICE OF THE GOODS.
- 3.04. NO ACTION ARISING OUT OF ANY CLAIMED BREACH OF THIS WARRANTY OR TRANSACTIONS UNDER THIS WARRANTY MAY BE BROUGHT MORE THAN TWO (2) YEARS AFTER THE CAUSE OF ACTION HAS OCCURRED.

4. MISCELLANEOUS.

- 4.01. Proper Venue for any lawsuits arising from or related to this limited warranty shall be only in Guadalupe County, Texas.
- 4.02. Manufacturer may waive compliance with any of the terms of this limited warranty, but no waiver of any terms shall be deemed to be a waiver of any other term.
- 4.03. If any provision of this limited warranty shall violate any applicable law and is held to be unenforceable, then the invalidity of such provision shall not invalidate any other provisions herein.
- 4.04. Applicable law may provide rights and benefits to purchaser in addition to those provided herein.

KEEP FOR YOUR RECORDS

ATTENTION: Purchaser should fill in the blanks below for his reference when buying repair parts and/or for proper machine identification when applying for warranty.

Servis-Rhino Implement Model _____ Serial Number _____

Date Purchased _____ Dealer _____

ATTENTION:
READ YOUR OPERATOR'S MANUAL

RHINO®
1020 S. Sangamon Ave.
Gibson City, IL 60936
800-446-5158
Email: parts@servis-rhino.com





TO THE OWNER/OPERATOR/DEALER

To keep your implement running efficiently and safely, read your manual thoroughly and follow these directions and the Safety Messages in this Manual. The Table of Contents clearly identifies each section where you can easily find the information you need.

The OCCUPATIONAL SAFETY AND HEALTH ACT (1928.51 Subpart C) makes these minimum safety requirements of tractor operators:

REQUIRED OF THE OWNER:

1. Provide a Roll-Over-Protective Structure that meets the requirements of this Standard; and
2. Provide Seatbelts that meet the requirements of this paragraph of this Standard and SAE J4C; and
3. Ensure that each employee uses such Seatbelt while the tractor is moving; and
4. Ensure that each employee tightens the Seatbelt sufficiently to confine the employee to the protected area provided by the ROPS.

REQUIRED OF THE OPERATOR

1. Securely fasten seatbelt if the tractor has a ROPS.
2. Where possible, avoid operating the tractor near ditches, embankments, and holes.
3. Reduce speed when turning, crossing slopes, and on rough, slick, or muddy surfaces.
4. Stay off slopes too steep for safe operation.
5. Watch where you are going - especially at row ends, on roads, and around trees.
6. Do not permit others to ride.
7. Operate the tractor smoothly - no jerky turns, starts, or stops.
8. Hitch only to the drawbar and hitch points recommended by the tractor manufacturer.
9. When the tractor is stopped, set brakes securely and use park lock, if available.



Keep children away from danger all day, every day...



Equip tractors with rollover protection (ROPS) and keep all machinery guards in place...



Please work, drive, play and live each day with care and concern for your safety and that of your family and fellow citizens.

