



MDB130

MECHANICAL DITCH BANK ROTARY CUTTER

REV 11-16

Part No. 00792071P

PART'S MANUAL



An Operator's Manual was shipped with the equipment in the Manual Canister. This Operator's Manual is an integral part of the safe operation of this machine and must be maintained with the unit at all times. **READ, UNDERSTAND, and FOLLOW** the Safety and Operation Instructions contained in this manual before operating the equipment. If the Operator's Manual is not with the equipment, contact your dealer or Servis-Rhino (800-446-5158) to obtain a Free copy before operating the equipment.



RHINO®

1020 S. Sangamon Ave.
Gibson City, IL 60936
800-446-5158

Email: parts@servis-rhino.com

ATENCIÓN!

LEA EL INSTRUCTIVO

Si No Lee Ingles, Pida Ayuda a Alguien
Que Si Lo Lea Para Que le Traduzca las
Medidas de Seguridad.



© 2015 Alamo Group Inc.

TO THE OWNER/OPERATOR/DEALER

All implements with moving parts are potentially hazardous. There is no substitute for a cautious, safe-minded operator who recognizes the potential hazards and follows reasonable safety practices. The manufacturer has designed this implement to be used with all its safety equipment properly attached to minimize the chance of accidents.

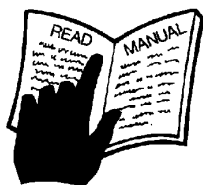
BEFORE YOU START!! Read the safety messages on the implement and shown in your manual.
Observe the rules of safety and common sense!



DANGER

FAILING TO FOLLOW SAFETY MESSAGES AND OPERATING INSTRUCTIONS CAN CAUSE SERIOUS BODILY INJURY OR EVEN DEATH TO OPERATOR AND OTHERS IN THE AREA.

1.



2. NO RIDERS, NO CHILDREN
OPERATORS



3. USE SAFETY SHOES, HARD
HAT, SAFETY GLASSES,
SEAT BELTS, & ROPS



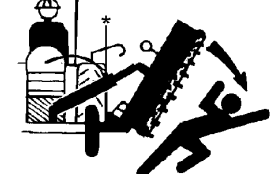
4. BLOCK UP SECURELY
BEFORE WORKING UNDER.



1. Study and understand Operator's Manuals, Safety Signs, and Instructional Decals for tractor & flail mower to prevent misuse, abuse, & accidents. Practice before operating mower in a confined area or near passersby.

- Learn how to stop engine suddenly in an emergency. Be alert for passersby and especially children.
2. Allow no children on or near implement or tractor. Allow no riders on tractor or implement. Falling off can cause serious injury or death from being run over by tractor or mower or contact with Flail Mower Blades.
3. Operate only with tractor having Roll-Over Protective Structure (ROPS) and with seatbelt fastened securely and snugly to prevent injury and possible death from falling off or tractor overturn. Personal Protective Equipment such as Hard Hat, Safety Glasses, Safety Shoes, and Ear Plugs are recommended.
4. Block up or support raised machine and all lifted components securely before putting hands or feet under or working underneath any lifted component to prevent crushing injury or death from sudden dropping or inadvertent operation of controls. Make certain that area is clear before lowering or folding.
5. Before transporting, put Lift Lever in detent or full-lift position. Install Transport Safety Devices securely on folding implements. Slow down when turning and on hillsides.
- Install **Restrictor in folding circuit to slow down lowering and unfolding if action is faster than is desirable.
6. Make certain that SMV sign, Warning Lights, and Reflectors are clearly visible. Follow local traffic codes.
7. Never operate with Flail Mower or Folding Section raised if passersby, bystanders or traffic are in the area to reduce possibility of injury or death from objects thrown by Blades under Shields or implement structure.
8. Before dismounting, secure flail mower in transport position or lower to ground.
- Put tractor in park or set brake, disengage PTO, stop engine, remove key, and wait until noise of rotation has ceased to prevent entanglement in rotating parts which may cause injury or death.
 - Never mount or dismount a moving vehicle. Crushing from runover may cause injury or death.

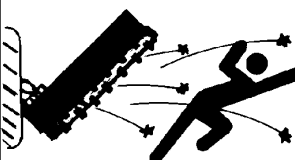
5. TRANSPORT SAFELY,
LOCK UP.



6. USE SMV, LIGHTS, &
REFLECTORS.



7. DO NOT OPERATE WITH
MOWER OR WING RAISED.



8. DO NOT MOUNT OR
DISMOUNT WHILE MOVING.



002369

WARRANTY INFORMATION:

Read and understand the complete Warranty Statement found in this Manual. Fill out the Warranty Registration Form in full and return it within 30 Days. Make certain the Serial Number of the Machine is recorded on the Warranty Card and on the Warranty Form that you retain. The use of "will-fit" parts will void your warranty and can cause catastrophic failure with possible injury or death.

PARTS SECTION

PARTS ORDERING GUIDE

The following instructions are offered to help eliminate needless delay and error in processing purchase orders for the equipment in this section.

1. The Parts Section is prepared in logical sequence and grouping of parts that belong to the basic machine featured in this manual. Part Numbers and Descriptions are given to help locate the parts and quantities required.
2. The Purchase Order must include the name and address of the person or organization ordering the parts, who should be charged, and if possible, the serial number of the machine for which the parts are ordered.
3. The Purchase Order must clearly list the quantity of each part, the complete and correct part number (be sure to include all periods), and the basic name of the part.
4. The Manufacturer reserves the right to substitute parts where applicable.
5. Some parts are unlisted items which are special production items not normally stocked and are subject to special handling. Request a quotation for such parts before sending a Purchase Order.
6. The Manufacturer reserves the right to change prices without prior notice.

NOTE: Please refer to The Safety Section in the front of this Manual for the proper Part Number when ordering Replacement Safety Decals.



For maximum safety and to guarantee optimum product reliability, always use genuine Servis-Rhino Parts. The use of inferior replacement parts may cause premature or catastrophic failure which could result in serious injury or death. Direct any questions regarding parts to:

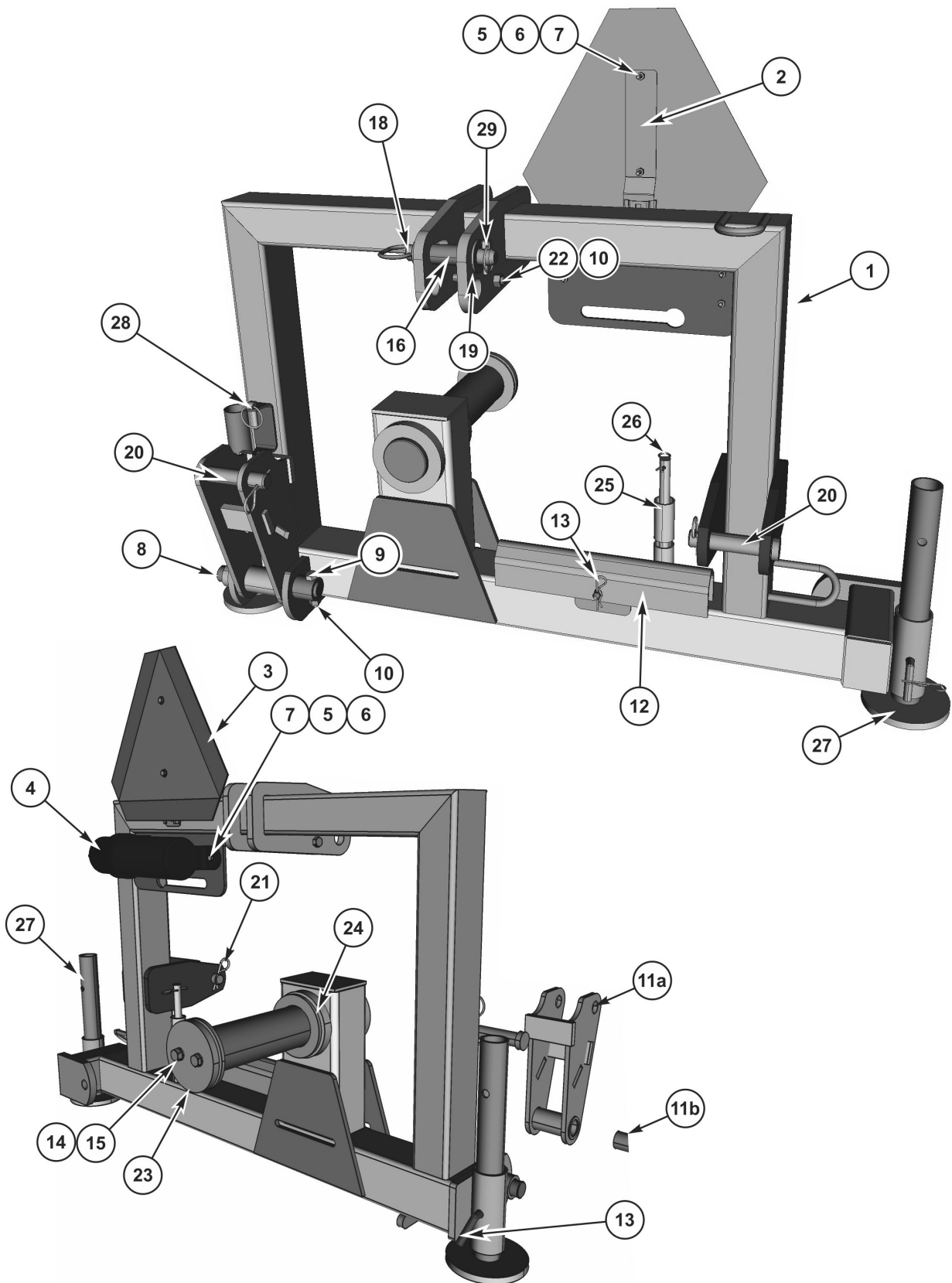


RHINO®
1020 S. Sangamon Ave.
Gibson City, IL 60936
800-446-5158
Email: parts@servis-rhino.com

PART NAME INDEX

3PT HITCH ASSEMBLY.....	4
ARM ASSEMBLY.....	6
BLADE CARRIER ASSEMBLY - W/OPTIONAL BOLT ON PAN.....	7
CUTTER DRIVELINE W/SLIPCLUTCH - 00792070.....	9
CYLINDER ASSEMBLY - 00779438.....	11
DECALS - 3PT HITCH.....	12
DECALS - ARM.....	13
DECALS - DECK.....	14
DECK ASSEMBLY.....	16
DECK ASSEMBLY - CONTINUED.....	18
GAUGE WHEEL OPTION.....	19
GEARBOX ASSEMBLY - 00791056 540RPM.....	20
GEARBOX ASSEMBLY - 00792090 - DIVIDER.....	22
INPUT DRIVELINE - 00792069 (540RPM).....	24
INPUT DRIVELINE - 00792089 (1000RPM).....	25

3PT HITCH ASSEMBLY

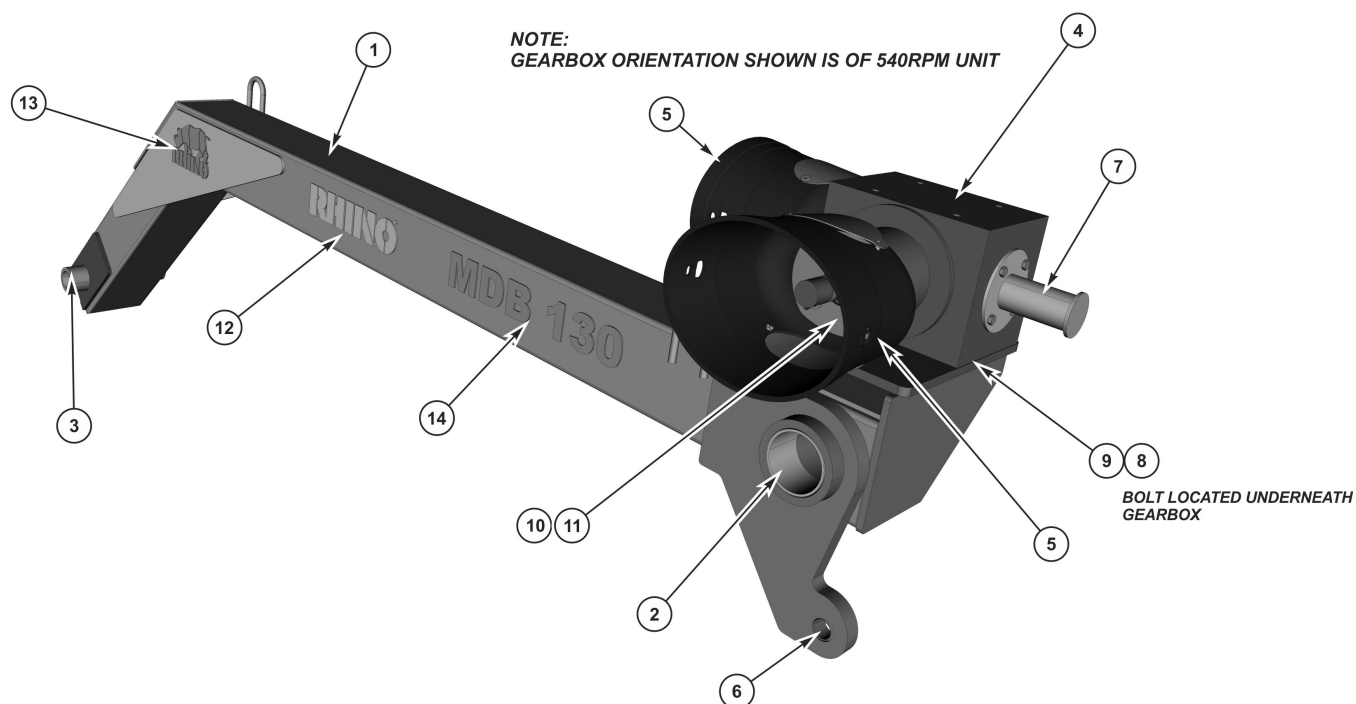


3PT HITCH ASSEMBLY

Continued...

ITEM	PART NO.	QTY.	DESCRIPTION
1	00792031	1	WDMT/ 3 PT HITCH - MDB130
2	2438621	1	SPADE BRACKET, SMV MOUNTING
3	03200347	1	EMBLEM, SMV
4	00776031	1	CANISTER, PARTS MANUAL
5	00024100	3	FLAT WASHER STD 1/4 PL
6	10058000	5	HHCS 1/4 NC 1 PL5
7	02959924	5	NUT, LOCK TLM 1/4-20 NC PLB
8	5032501	1	PIN/ DRL 1-1/4 X 8-3/8" - PLATED
9	02788400	1	HHCS, 1/2-13NC X 2-1/2 PL5
10	32905C	2	NUT CENTER LOCK 1/2" NC PL B
11a	00792048	1	ASY/ 3 POINT RIGHT BREAK AWAY BRKT
11b	5036775	1	BUSHING, UHMW - 1.25X1.5X1.25LG
12	00792059	1	STOP/ CYLINDER - 1/4 X 15 LONG
13	00725712	1	PIN, PULL BENT 1/2 X 3 W/ HAIRCLIP
14	00749130	2	HHCS 1/2-13UNC 1-3/4 PL5
15	00001300	2	WASHER, LOCK 1/2 GD8 YDP
16	69113	1	BUSHING, UPPER 2500
18	51967	1	HITCH PIN YDP
19	15B1600	1	WASHER 1 SAE P
20	2452517	2	PIN/ GAUGE WHEEL 1-1/8 X 5"
21	49208	2	HAIRPIN COT. .178 X 3-9/16
22	00752680	1	HHCS, 1/2-13 NC X 4 GR5 PL
23	00792057	1	PLATE/ BEARING DISC
24	00792060	2	WASHER / FLAT 5 OD X 3.28 ID X 1/4" PLATED
25	00792058	2	SPACER/ LOWER 3 PT CAT 2
26	37107B13	1	PIN, HAIR CLIP
27	00792072	2	WDMT/SUPPORT STAND
28	2196	1	CLIP (LYNCH PIN), 13/32 DIA.
29	44756-1	1	PIN, LYNCH 5/16X1-5/8 YDP

ARM ASSEMBLY

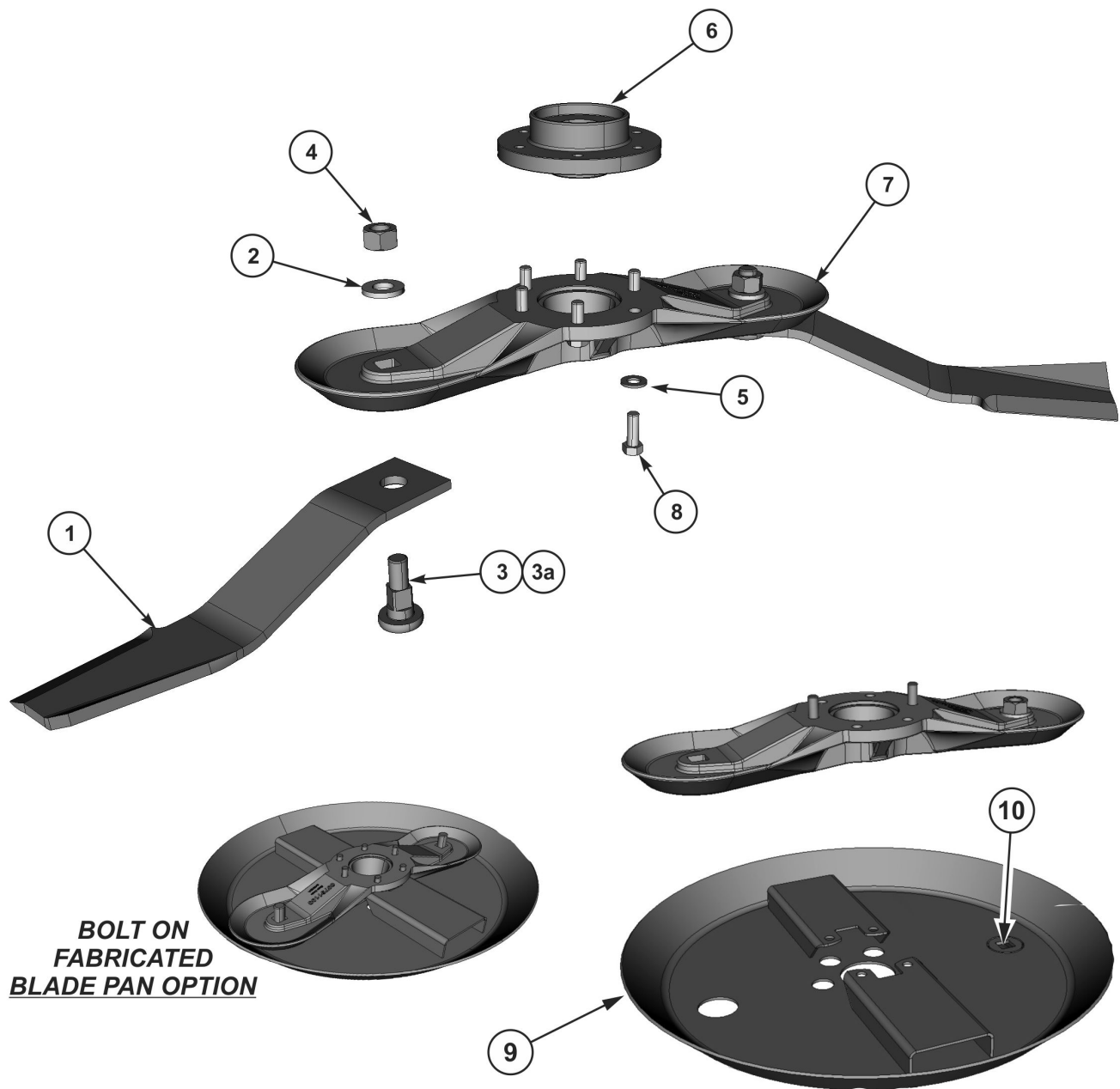


ITEM	PART NO.	QTY.	DESCRIPTION
1	00792099	1	WDMT/ DITCHBANK ARM - MDB130
2	00792061	2	BUSH/ UHMW 3.5 X 3.25 X 2-1/2" LG
3	00792062	2	BUSH/ UHMW 2.25 X 2.0 X 1-1/2" LG
4	00792090	1	DIVIDER GEARBOX - 1: 1.21, 540
5	00785946	2	KIT/ GEARBOX SHIELD & RING
6	88916	1	BUSHING, PIVOT
7	00792053	1	WDMT/ GEARRBOX SHAFT COVER
8	00010300	4	WASHER/ LOCK 5/8 GR8 YDP
9	02675800	4	BOLT 5/8 NC 1-1/2 PL5
10	00023500	8	FLATWASHER, 5/16 PL
11	02958784	12	BOLT METRIC 8-P1.25- 20MM PL8.8
12	54288	2	DECAL, RHINO
13	00792013	2	DECAL, RHINO LOGO LEFT
14	00792012	2	DECAL/ MODEL - MDB 130

MDB130

BLANK INTENTIONALLY

BLADE CARRIER ASSEMBLY - W/OPTIONAL BOLT ON PAN

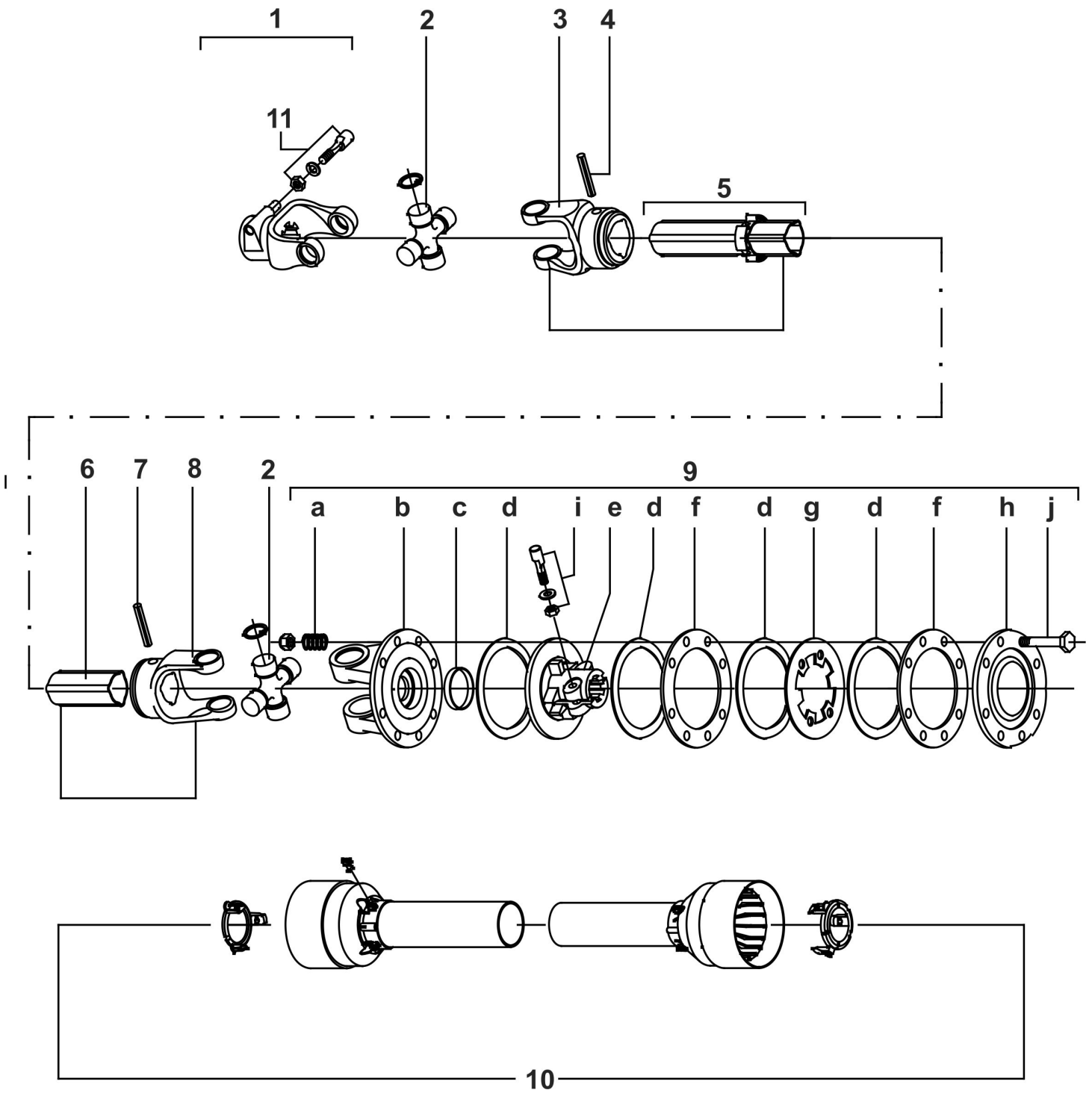


BLADE CARRIER ASSEMBLY - W/OPTIONAL BOLT ON PAN

Continued...

ITEM	PART NO.	QTY.	DESCRIPTION
1	00759339P	2	BLADE, CCW PARALLEL LIFT
2	571045	2	SHOULDER BOLT WASHER
3	571044	2	BLADE BOLT
3a	B571044	1	BLADE BOLT KIT
4	5GL16140	2	LOCKNUT, 1 -14 LH TLN PL
5	00756077	6	WASHER,5/8 HARDENED
6	00791094	1	HUB, EZ80 FLANGED ADAPTOR
7	00791100	1	BLADE CARRIER
8	00760711	6	HHCS 5/8-11NC X 1-3/4" PL5
9	00791101	1	BLADE PAN 21CTR-21CTR
10	0656150200	2	SQ WASHER - 1/4"

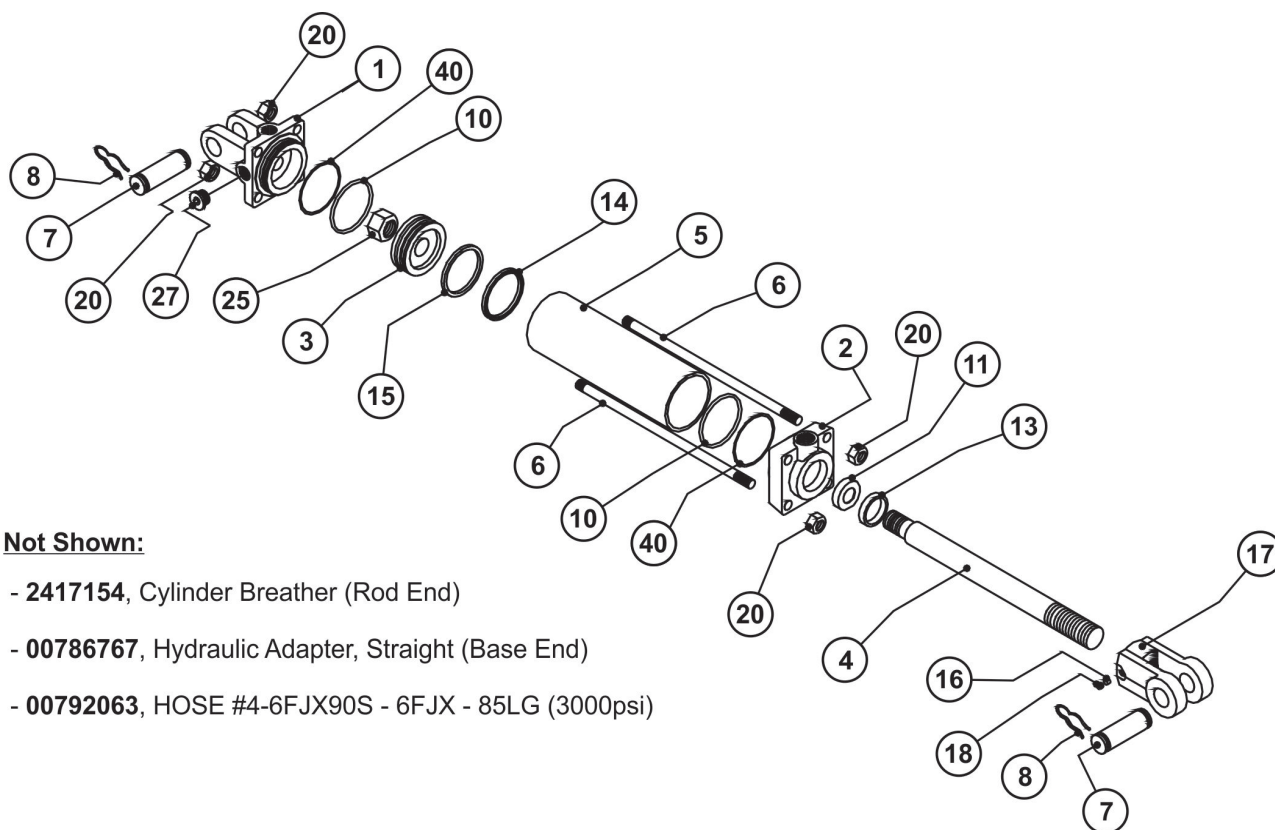
CUTTER DRIVELINE W/SLIPCLUTCH - 00792070



CUTTER DRIVELINE W/SLIPCLUTCH - 00792070**Continued...**

ITEM	PART NO.	QTY.	DESCRIPTION
1	00792113	1	ASY,QD YOKE - 1-3/8 - 21 SPL.
2	00752896	2	KIT,CROSS & BEARING- SERIES 60
3	00754154	1	YOKE,OUTER TUBE #6
4	00756934	1	PIN,ROLL 10 X 80
5	00792114	1	ASY,OUTER TUBE - 1365MM LG.
6	00792115	1	TUBE,INNER
7	00754167	1	PIN,ROLL 10MM X 75MM
8	00754153	1	YOKE INNER #6
9	00792116	1	ASY,DISC CLUTCH - 1-3/4-20 SPL
9a	00754303	8	SPRING,CLUTCH
9b	00754302	1	YOKE, CLUTCH SERIES 6
9c	00754301	1	BUSHING FOR CLUTCH
9d	00754202	4	DISC,FRICITION - NON ASBESTOS
9e	00792119	1	YOKE,CLUTCH SUPPORT FLANGE
9f	00754314	2	PLATE WITH HOLES FOR
9g	00754201	1	INNER PLATE FOR CLUT
9h	00766810	1	PLATE,PRESSURE
9i	00765442	8	BOLT M10 X 1.5 X 100 & NUT
9j	00774147	1	TAPERED PIN SET 1-3/4
10	00792117	1	ASY,GUARD SHIELD - COMPLETE
11	00792118	1	SET,TAPERED PIN - 1-3/8"

CYLINDER ASSEMBLY - 00779438

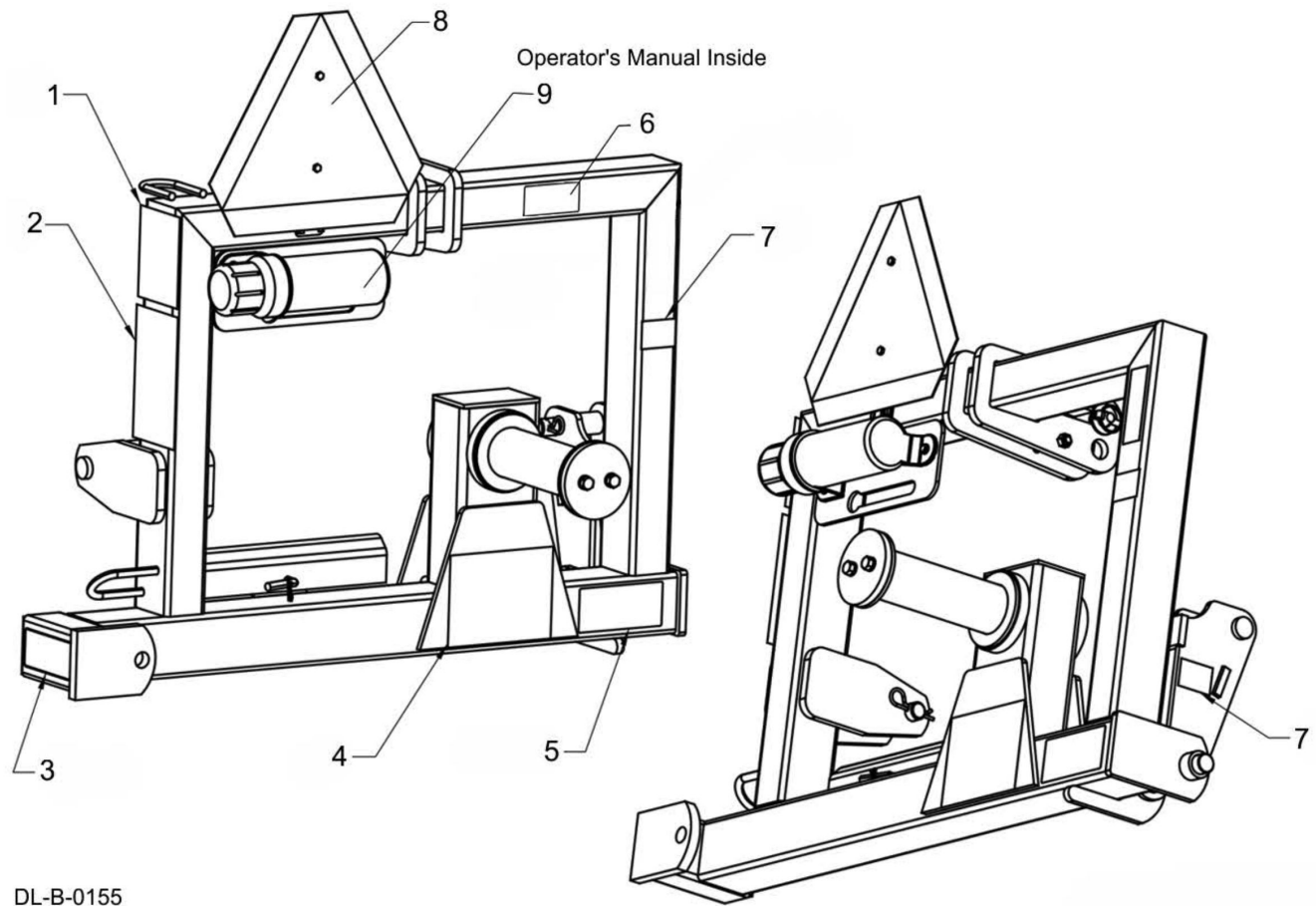


Not Shown:

- (21) - 2417154, Cylinder Breather (Rod End)
- (22) - 00786767, Hydraulic Adapter, Straight (Base End)
- (23) - 00792063, HOSE #4-6FJX90S - 6FJX - 85LG (3000psi)

ITEM	PART NO.	QTY.	DESCRIPTION
	00779438	1	CYLINDER ASSEMBLY
1	00774728	1	CLEVIS CAP 3.50-3/4 ORB 1.00
2	00774735	1	ROD CAP 3.50-1.50-3/4 ORB
3	00774733	1	PISTON 3.50-1.00-S-WR PSP & 2WR
10	-----	2	END CAP O-RING
11	-----	1	U-CUP ROD SEAL
13	-----	1	ROD WIPER
14	-----	1	PSP PISTON SEAL
15	-----	2	PISTON WEAR RING
16	3047117	1	THREAD LOCK
17	1917140	1	ROD CLEVIS
18	0116000	1	SHSS 3/8 NC 1/2
20	33017H5C	8	NUT, HEX 5/8-18 UNF GR.5 PLT
21	2417154	1	CYLINDER BREATHER, (ROD END)
22	00786767	1	HYDRAULIC ADAPTER, STRAIGHT (BASE END)
40	-----	2	END CAP BACKUP RING
23	00792063	1	HOSE #4-6FJX90S - 6FJX - 85LG (3000PSI)
25	5JRC16140	1	LOCKNUT 1 -14 TLDT GC ZP
27	1917132	1	SCKT HD O-RNG PLUG, 3/4-16 UNF,
41	00774759	1	SEAL KIT - INCLUDES ITEMS 10, 11, 13, 14, 15, AND 40

DECALS - 3PT HITCH

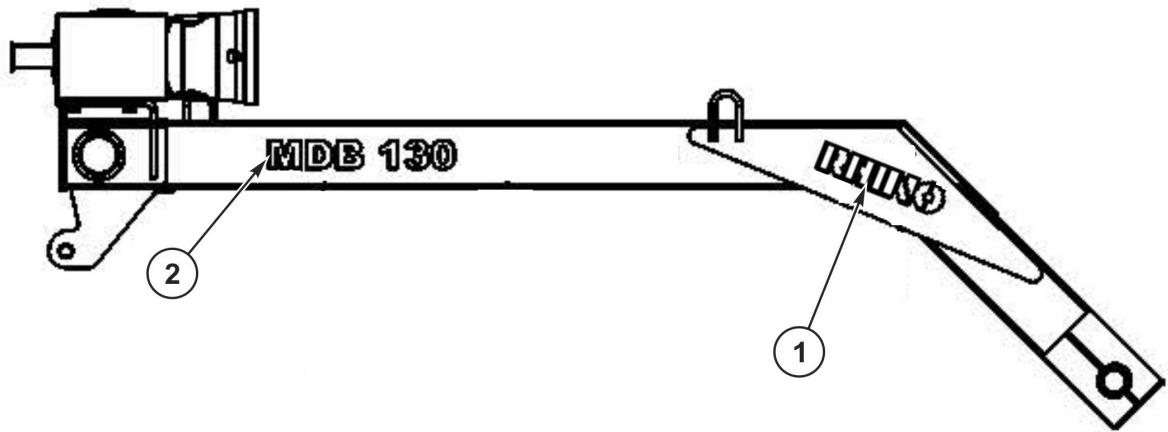


DL-B-0155

ITEM	PART NO.	QTY.	DESCRIPTION
0	00792067	1	DECAL SHEET/SAFETY 3 POINT
1	D617	1	HYDRAULIC OIL LEAK
2	D388	1	MULTI-HAZARD - 540 RPM
3	D401	1	1000 RPM
	3668308	1	TRANSPORT LATCH
4	D618	1	BOOM MULTI-HAZARD
5	00760657	1	USE GENUINE RHINO PARTS
6	D643	1	ENTANGLEMENT HAZARD
7	D623	2	PINCH POINTS
8	03200347	1	SMV
9	00776031	1	MANUAL CANISTER
	00792071C	1	MDB130 OPERATOR'S MANUAL

MDB130

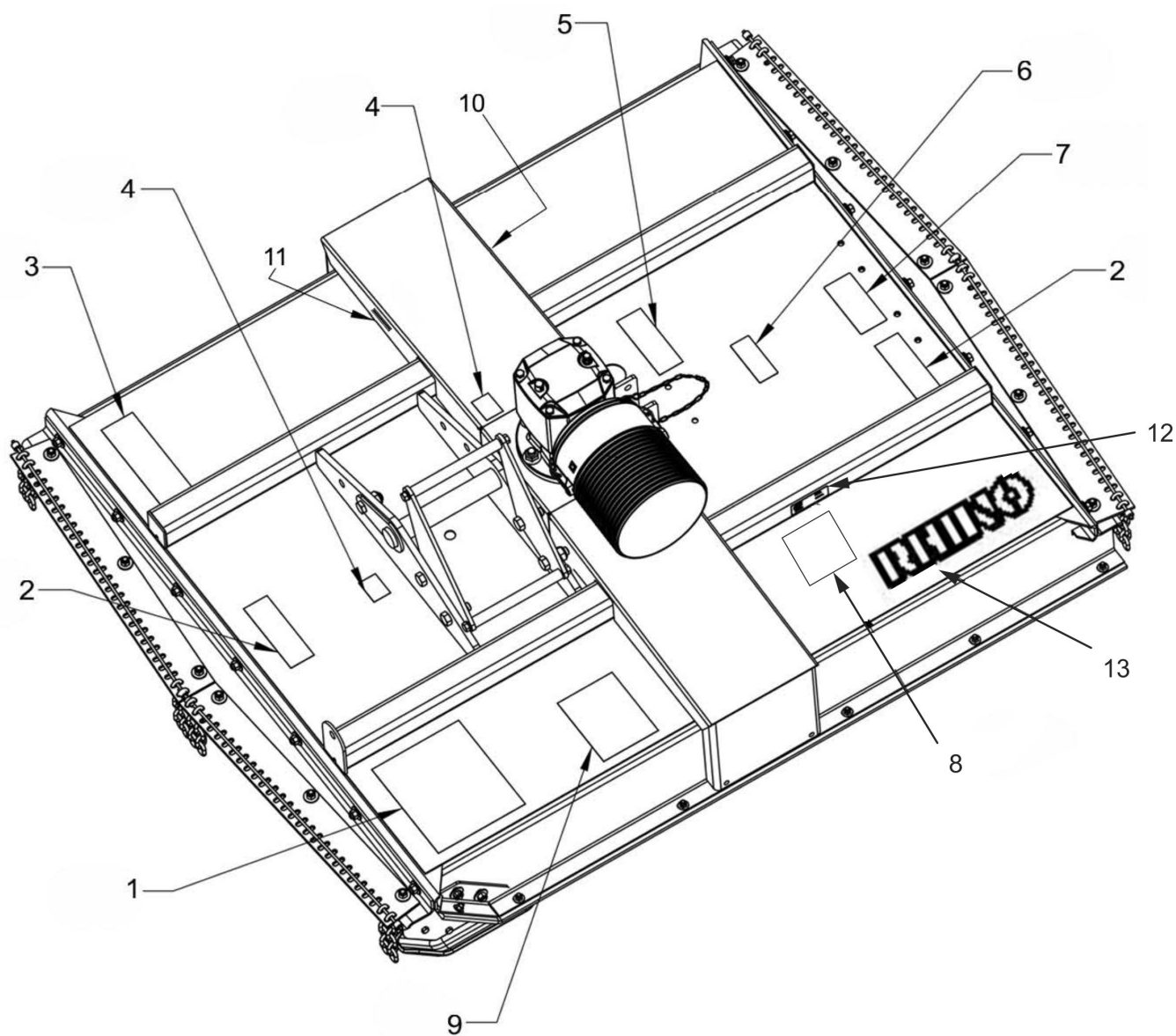
DECALS - ARM



ITEM	PART NO.	QTY.	DESCRIPTION
0	00792011	1	DECAL SHEET
1	54288	2	LOGO RHINO NAME
2	00792012	2	NAME MDB130

BLANK INTENTIONALLY

DECALS - DECK

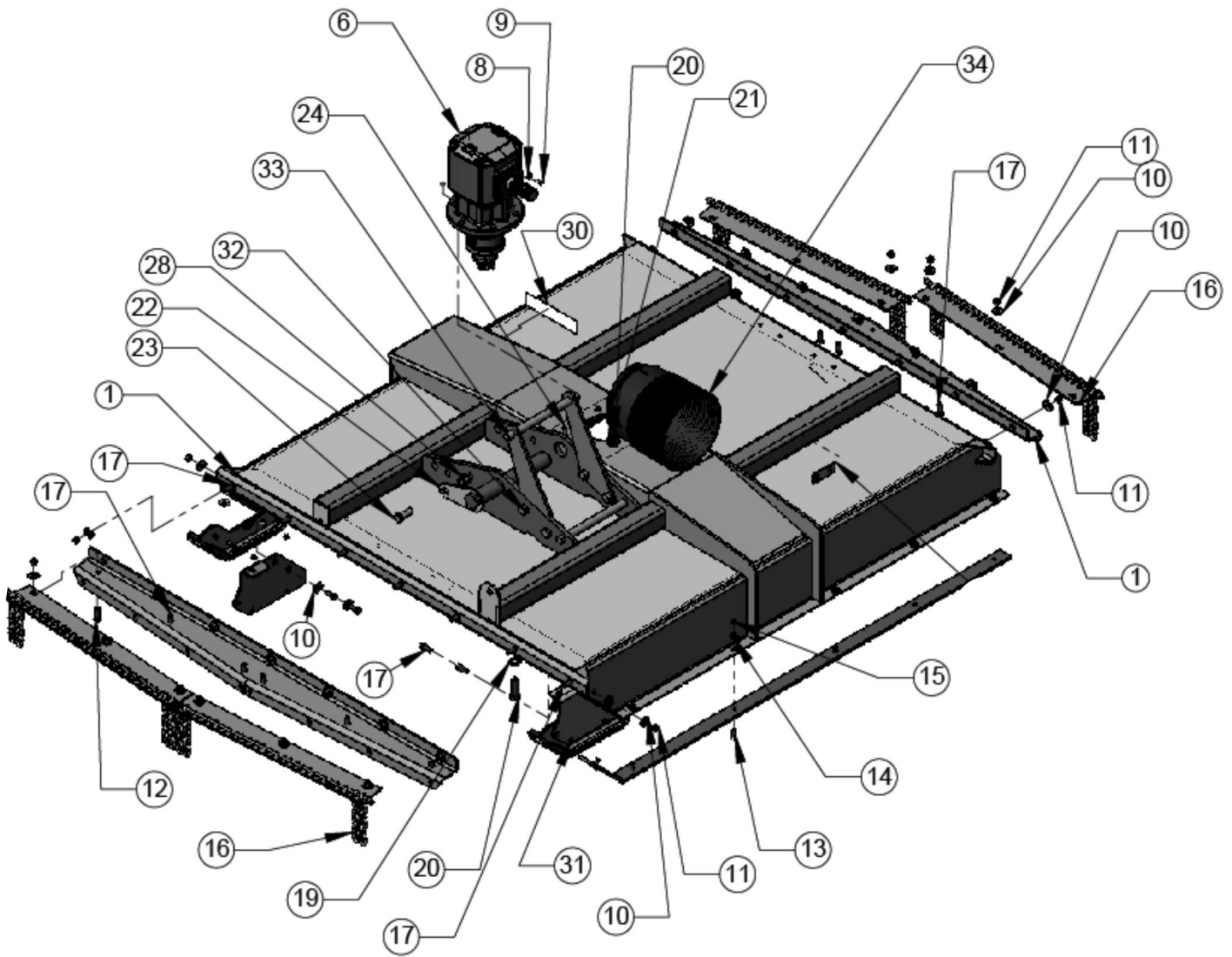


DECALS - DECK

Continued...

ITEM	PART NO.	QTY.	DESCRIPTION
0	00792011	1	DECAL SHEET
1	D389	1	MULTI-HAZARD
2	D614	2	THROWN OBJECT HAZARD
3	D814	1	MULTI LANGUAGE
4	D623	2	PINCH POINTS
5	D534	1	BLADE TORQUE
6	D137	1	BLADE ROTATION
7	00760657	1	USE GENUINE RHINO PARTS
8	D565	1	CRUSHING HAZARD
9	D618	1	BOOM MULTI HAZARD
10	1458392	1	RED REFLECTOR
11	1458393	1	YELLOW REFLECTOR
12	-----	1	SERIAL NUMBER PLATE
13	54288	1	LOGO RHINO NAME

DECK ASSEMBLY

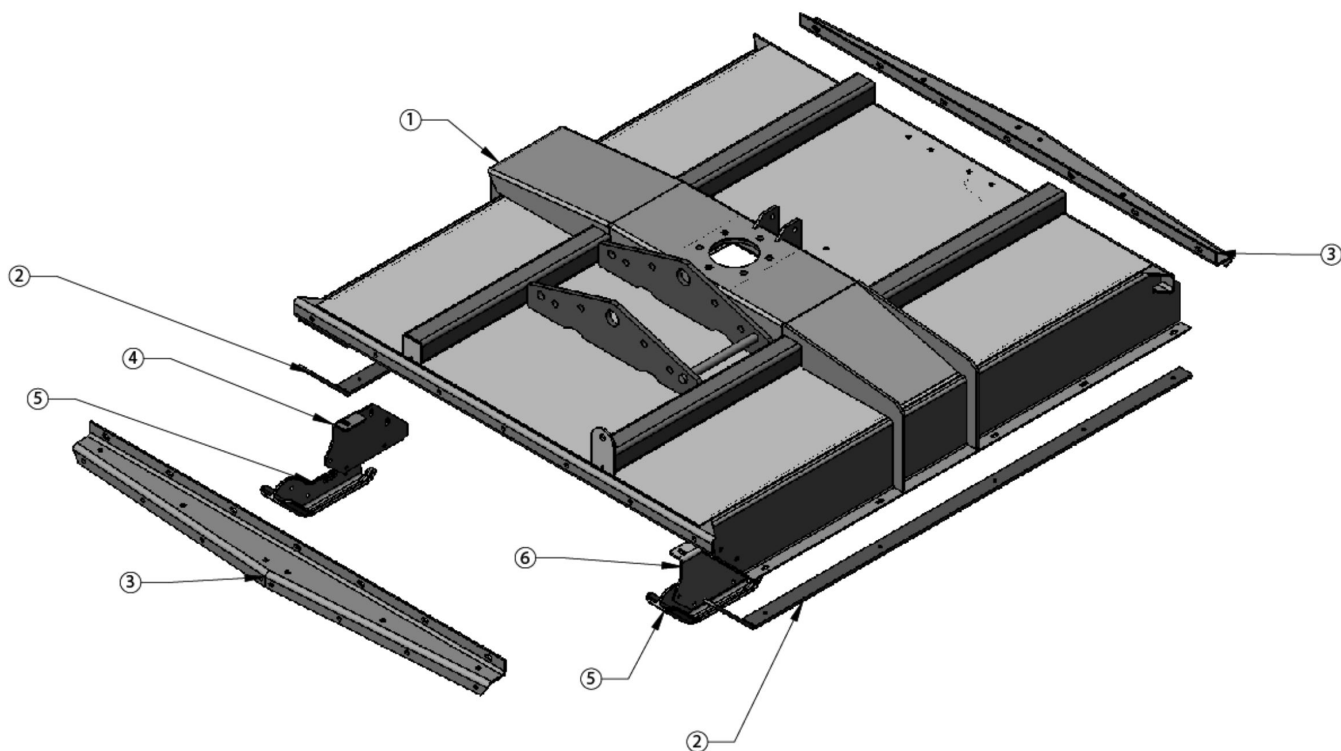


DECK ASSEMBLY

Continued...

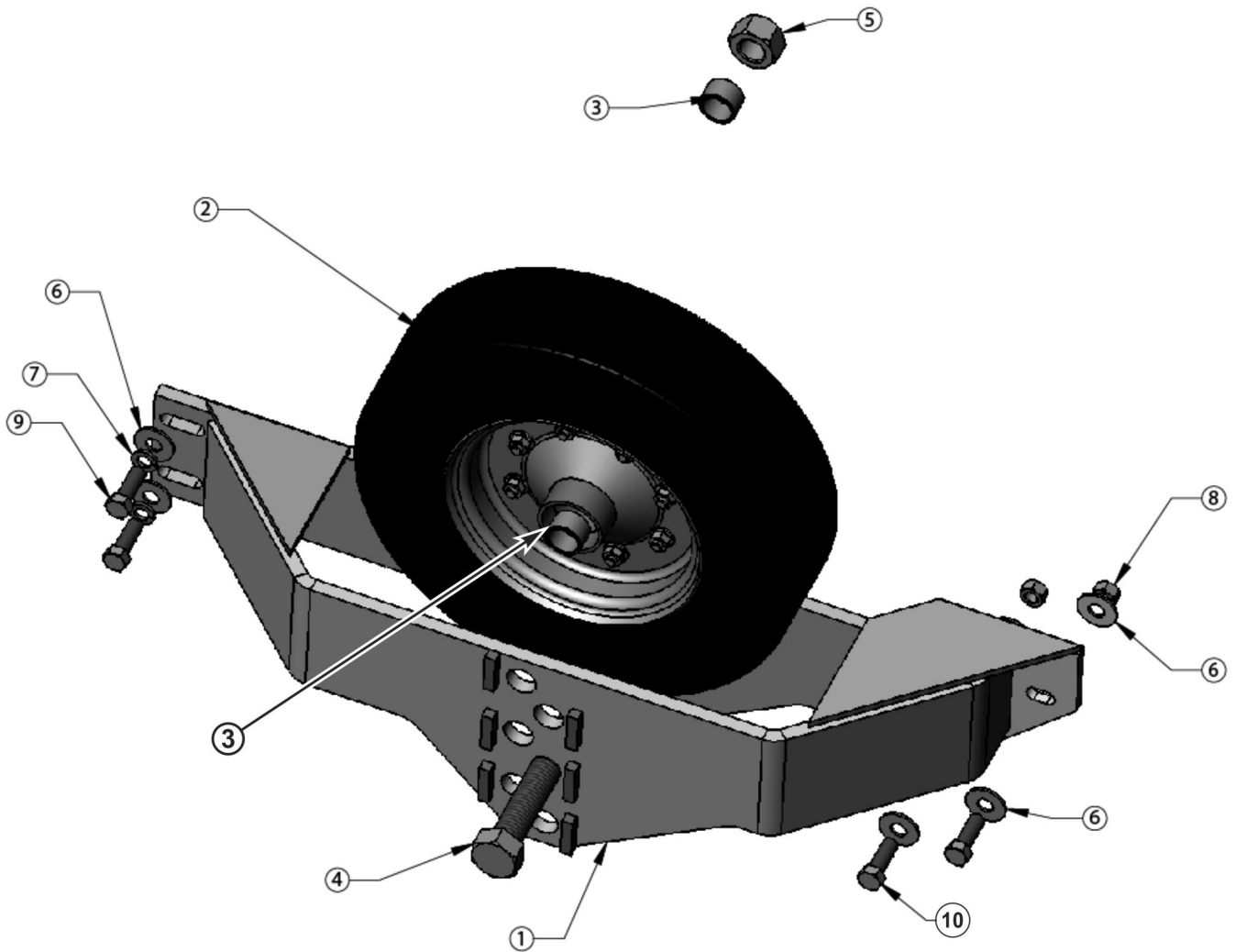
ITEM	PART NO.	QTY.	DESCRIPTION
1	-----	1	SEE DECK ASSEMBLY CONTINUED
6	00791056	1	ASSY, EZ80 GEARBOX 1:1.21 OPP TO INPUT
8	00023500	4	FLATWASHER, 5/16 PL
9	02958784	4	BOLT METRIC 8-P1.25- 20MM PL8.8
10	00002700	36	FLATWASHER 1/2 PL STD
11	00001800	30	LOCKNUT TLM 1/2 NC PLC
12	00748823	2	HHCS 1/2-13 UNC X 1-1/2 GR.5 PL
13	8277	12	BOLT, PLW 3/8 NC X 1 1/4 #3 PL
14	00011100	12	FLATWASHER 3/8 PL STD
15	00015800	18	NUT/ HEX LOCK TLM 3/8 NC PLC
16	00775776	4	ASY, FRONT CHAIN GUARD
	00777370	1	112 CHAIN 5/16 X 6 LINK
17	02030700	28	HHCS 1/2-13NC X 1-1/4 GR5 PL
19	5312316	6	WASHER, 3/4" HARDENED
20	00037100	6	HEXB 3/4 NC 2-1/2 PL5
21	329915H8C	6	NUT, HEX FLANGE-SPIRALOCK 3/4-10
22	00792014	1	WDMT/ FLAGPIN - 2 X 12.63 - PLT
23	02931300	1	HHCS, 3/4"NC X 2" ZP GR5
24	421010	1	ROLL PIN,3/8 X 2-3/4
28	02962939	5	NUT,ELASTIC TOP LOCK 3/4 NC - 10 PLT
30	1458392	2	DECAL, RED REFLECTOR
31	00753642	6	HHCS, 3/8NC X 1-1/4", ZP, GR.5
32	02959391	4	HHCS 3/4 NC 2-1/4 PL5
33	00792125	1	WDMT, DECK ROLL STOP
34	00787817	1	EXTENDED SHIELD ASSEMBLY

DECK ASSEMBLY - CONTINUED



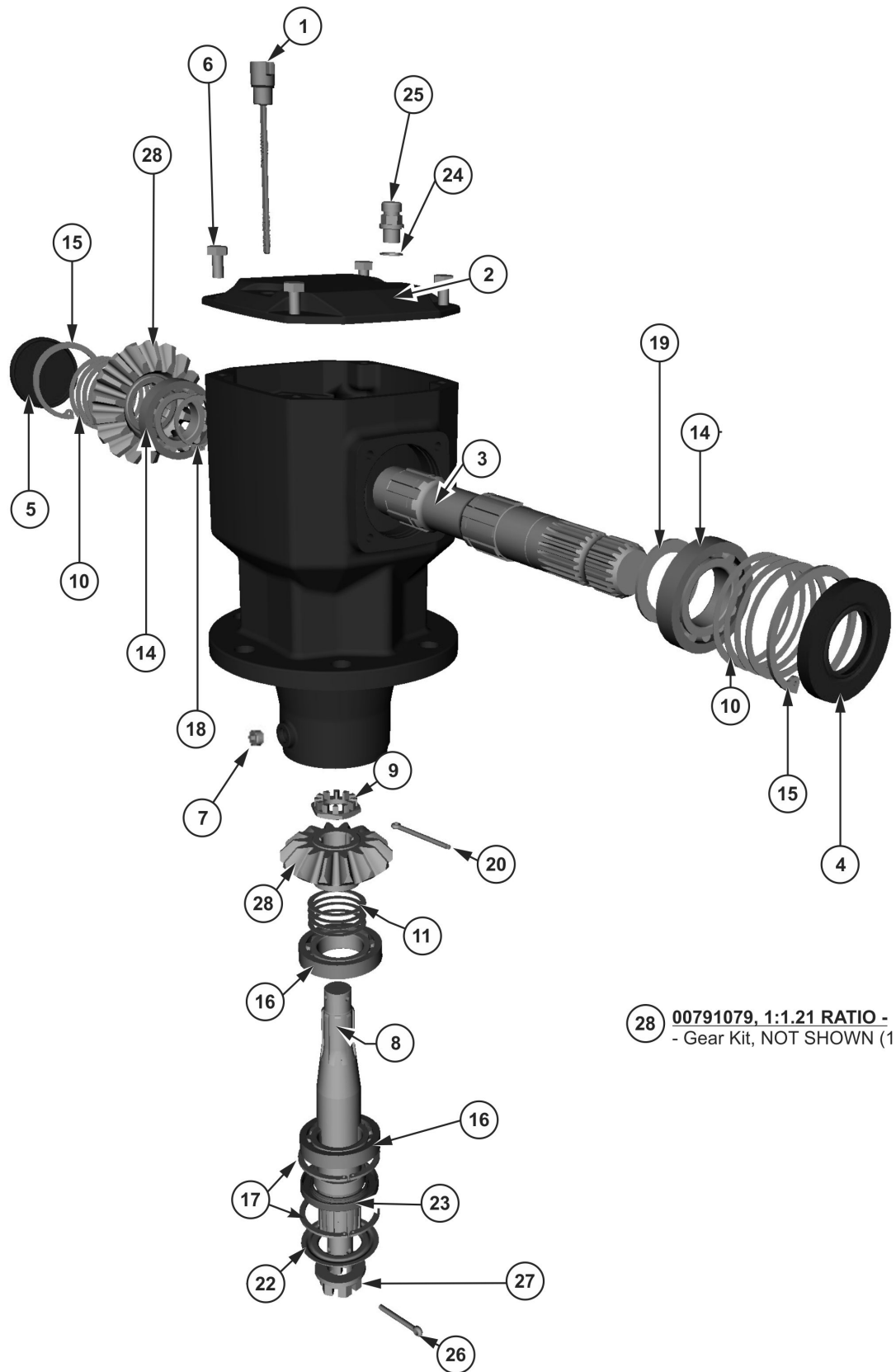
ITEM	PART NO.	QTY.	DESCRIPTION
1	00792091	1	WDMT/ REAR DISCHARGE DECK MDB 130 CUTTER
2	00792094	2	SHOE/ SKID DECK
3	00775556	2	PLATE, C/G DEFLECT MOUNT
4	00792087	1	PLATE/ RH CHAINGUARD SIDE SHIELD
5	00791381	2	CASTING, WING SKID SHOE
6	00792088	1	PLATE/ LH CHAINGUARD SIDE SHIELD

GAUGE WHEEL OPTION



ITEM	PART NO.	QTY.	DESCRIPTION
1	00774875	1	WLDMT/ GAUGE WHEEL BRACKET
2	00130010	1	ASY/ TIRE & WHEEL 4:00 X 8:00
3	00765337	2	SPACER
4	00016700	1	HEXB 1 NC 8 PL8
5	02030300	1	NUT TOPLOCK 1 NC PL5
6	00002700	6	FLATWASHER 1/2 PL STD
7	00001300	2	WASHER, LOCK 1/2 GD8 YDP
8	00001800	2	LOCKNUT TLM 1/2 NC PLC
9	00748823	4	HHCS 1/2-13 UNC X 1-1/2 GR.5 PL
10	02027400	2	HHCS 1/2 X 2-1/4 GR 5

GEARBOX ASSEMBLY - 00791056 540RPM

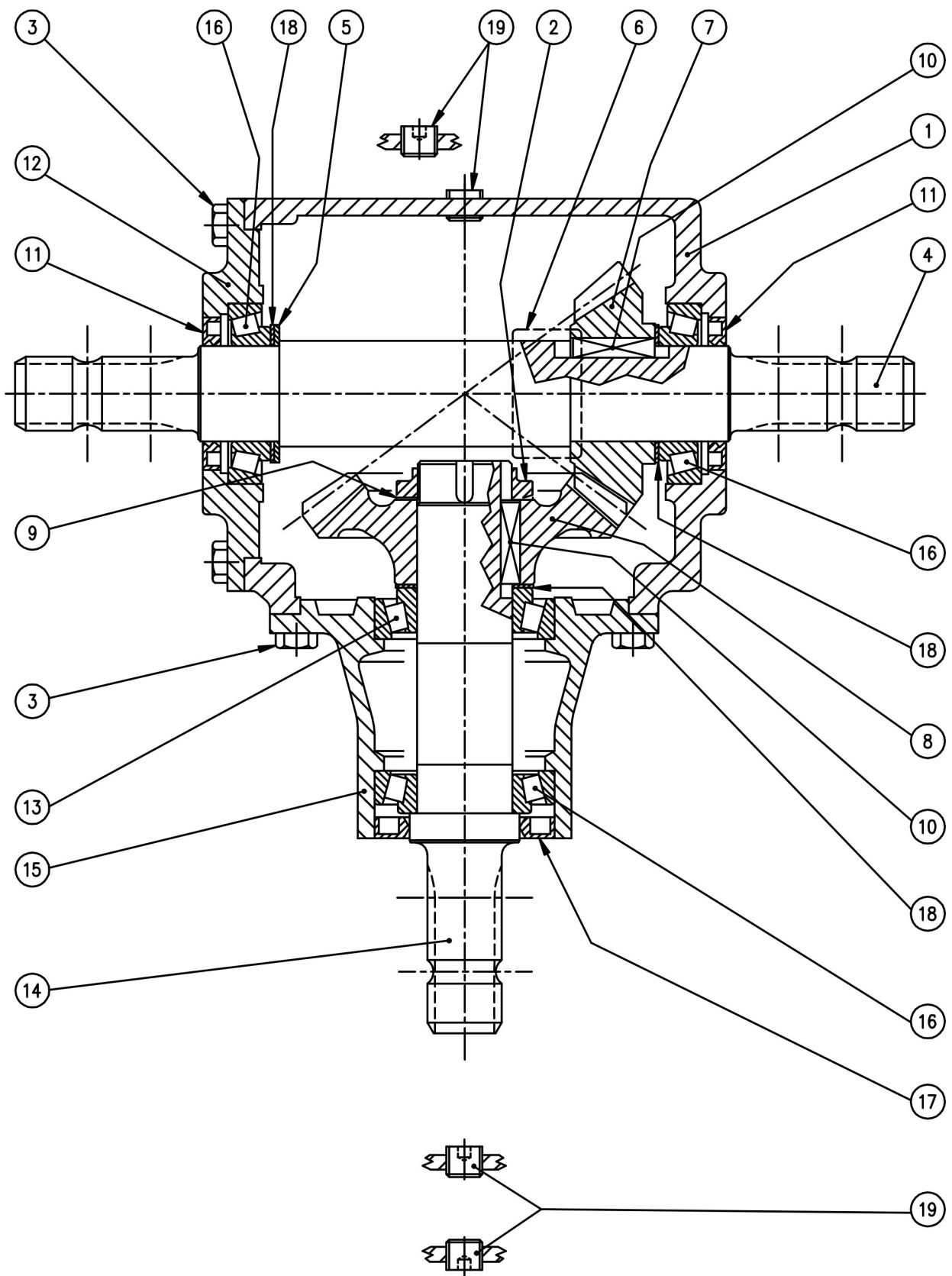


GEARBOX ASSEMBLY - 00791056 540RPM

Continued...

ITEM	PART NO.	QTY.	DESCRIPTION
1	4038611	1	DIPSTICK, OIL
2	00791063	1	CAP, HOUSING
3	00791064	1	SHAFT, INPUT 1-3/4 20-SPL
4	00753238	1	SEAL, OIL (45 X 85 X 10)
5	00755634	1	CAP, OIL (85 X 10)
6	00754764	4	HHCS, M10-1.5 X 20
7	00791032	1	PLUG, SOCKET HEAD-6MB
8	00791065	1	SHAFT, OUTPUT
9	00755621	1	NUT, CASTLE M30-1.5
10	00791066	2	KIT, INPUT SHIM
11	00791067	1	KIT, OUTPUT SHIM
14	00755615	2	BEARING, ROLLER - 45X85X20.75
15	00755618	2	RING, SNAP DIN 472 (85 X 88.5 X 3)
16	00769938	2	BEARING, ROLLER - 50X90X21.75
17	00791083	2	RING, SNAP DIN 472 (90 X 93.5 X 3)
18	2516460	1	RING, SNAP EXT. (50X47X3)
19	00755632	1	SHIM, (45.3X65.3X2.5)
20	70499	1	PIN, COTTER M5 X 63
21	00791082	1	TAG, GEARBOX
22	00791085	1	SHIELD, PROTECTIVE
23	00791084	1	SEAL, OIL DBL LIP 60 X 90 X 10
24	00790983	1	WASHER, SEALING M16
25	00790985	1	PLUG, VENT M16-1.5
26	2716423	1	PIN, COTTER M6 X 60
27	00791093	1	NUT, CASTLE M30-2.0
28	00791079	1	GEAR KIT

GEARBOX ASSEMBLY - 00792090 - DIVIDER



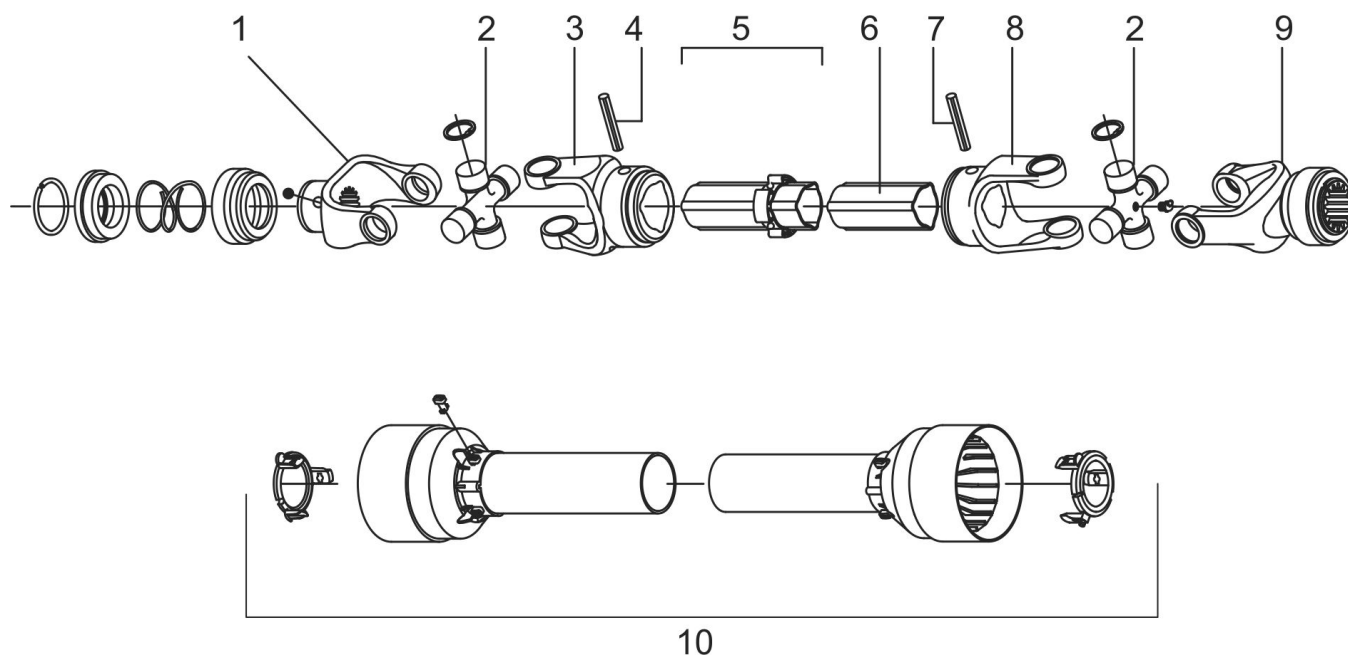
GEARBOX ASSEMBLY - 00792090 - DIVIDER

Continued...

ITEM	PART NO.	QTY.	DESCRIPTION
	00792090	-	COMPLETE GEARBOX
2	2716656	1	LOCKNUT M45 X 1.5
3	00744338	16	BOLT M10 X 22
4	00777414	1	THROUGH SHAFT 1" 3/8
5	00755632	1	SHIM (45.3 X 65.3 X 2.5)
7	00792107	1	GEAR PINION Z20 M5.7
8	00792108	1	GEAR CROWN Z27 M5.7
9	00771879	1	SHIM (45.3 X 65.3 X 1)
10	71549	2	PARALLEL KEY TYPE "B"
11	00777417	2	DUST LIP
12	00777418	1	COVER
13	00777419	1	ROLLER BEARING (45.3 X 85 X 24.75)
14	00792109	1	SHAFT 1" 3/8
15	00777421	1	EXTENSION
16	00755615	3	ROLLER BEARING (45 X 85 X 20.75)
17	00777423	1	OIL SEAL (52 X 85 X 10)
18	00753235	3	SHIM KIT (45.3 X 65.3)
19	00753226	4	3/8" GAS SOLID PLUG

INPUT DRIVELINE - 00792069 (540RPM)

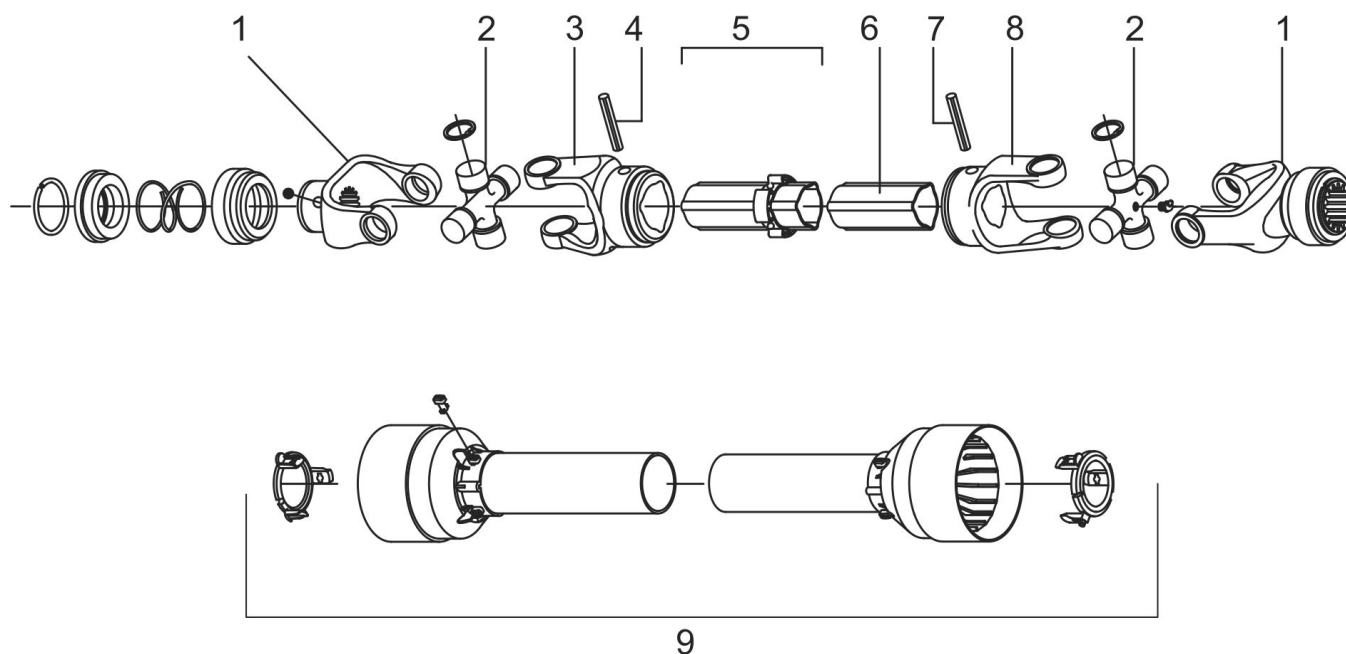
00792069



ITEM	PART NO.	QTY.	DESCRIPTION
	00792069	1	DRIVELINE COMPLETE
1	00760002	1	YOKE, ASY, 1-3/8X20S
2	00752896	2	KIT,CROSS & BEARING- SERIES 60
3	00754154	1	YOKE, OUTER TUBE #6
4	00756934	1	PIN, ROLL 10 X 80
5	00792110	1	ASY, OUTER TUBE - 450MM LG.
6	00792111	1	TUBE, INNER - 465MM LG.
7	00754167	1	PIN, ROLL 10MM X 75MM
8	00754153	1	YOKE INNER #6
9	00752883	1	YOKE, 1-3/8-6 #6 SLID
10	00792112	1	ASY, GUARD SHIELD - COMPLETE

INPUT DRIVELINE - 00792089 (1000RPM)

00792089



ITEM	PART NO.	QTY.	DESCRIPTION
	00792089	1	DRIVELINE COMPLETE
1	00760002	2	YOKE, ASY, 1-3/8X20S
2	00752896	2	KIT,CROSS & BEARING- SERIES 60
3	00754154	1	YOKE,OUTER TUBE #6
4	00756934	1	PIN,ROLL 10 X 80
5	00792120	1	ASY,OUTER TUBE - 530MM LG.
6	00792121	1	TUBE,INNER - 545MM LG.
7	00754167	1	PIN,ROLL 10MM X 75MM
8	00754153	1	YOKE INNER #6
9	00792122	1	ASY,GUARD SHIELD - COMPLETE

SERVIS-RHINO

LIMITED WARRANTY

1. LIMITED WARRANTIES

- 1.01. Servis-Rhino warrants for one year from the purchase date to the original non-commercial, governmental, or municipal purchaser ("Purchaser") and warrants for six months to the original commercial or industrial purchaser ("Purchaser") that the goods purchased are free from defects in material or workmanship.
- 1.02. Manufacturer will replace for the Purchaser any part or parts found, upon examination at one of its factories, to be defective under normal use and service due to defects in material or workmanship.
- 1.03. This limited warranty does not apply to any part of the goods which has been subjected to improper or abnormal use, negligence, alteration, modification, or accident, damaged due to lack of maintenance or use of wrong fuel, oil, or lubricants, or which has served its normal life. This limited warranty does not apply to any part of any internal combustion engine, or expendable items such as blades, shields, guards, or pneumatic tires except as specifically found in your Operator's Manual.
- 1.04. Except as provided herein, no employee, agent, Dealer, or other person is authorized to give any warranties of any nature on behalf of Manufacturer.

2. REMEDIES AND PROCEDURES.

- 2.01. This limited warranty is not effective unless the Purchaser returns the Registration and Warranty Form to Manufacturer within 30 days of purchase.
- 2.02. Purchaser claims must be made in writing to the Authorized Dealer ("Dealer") from whom Purchaser purchased the goods or an approved Authorized Dealer ("Dealer") within 30 days after Purchaser learns of the facts on which the claim is based.
- 2.03. Purchaser is responsible for returning the goods in question to the Dealer.
- 2.04. If after examining the goods and/or parts in question, Manufacturer finds them to be defective under normal use and service due to defects in material or workmanship, Manufacturer will:
 - (a) Repair or replace the defective goods or part(s) or
 - (b) Reimburse Purchaser for the cost of the part(s) and reasonable labor charges (as determined by Manufacturer) if Purchaser paid for the repair and/or replacement prior to the final determination of applicability of the warranty by Manufacturer.The choice of remedy shall belong to Manufacturer.
- 2.05. Purchaser is responsible for any labor charges exceeding a reasonable amount as determined by Manufacturer and for returning the goods to the Dealer, whether or not the claim is approved. Purchaser is responsible for the transportation cost for the goods or part(s) from the Dealer to the designated factory.

3. LIMITATION OF LIABILITY.

- 3.01. MANUFACTURER DISCLAIMS ANY EXPRESS (EXCEPT AS SET FORTH HEREIN) AND IMPLIED WARRANTIES WITH RESPECT TO THE GOODS INCLUDING, BUT NOT LIMITED TO, MERCHANTABILITY AND FITNESS FOR A PARTICULAR PURPOSE.
- 3.02. MANUFACTURER MAKES NO WARRANTY AS TO THE DESIGN, CAPABILITY, CAPACITY, OR SUITABILITY FOR USE OF THE GOODS.
- 3.03. EXCEPT AS PROVIDED HEREIN, MANUFACTURER SHALL HAVE NO LIABILITY OR RESPONSIBILITY TO PURCHASER OR ANY OTHER PERSON OR ENTITY WITH RESPECT TO ANY LIABILITY, LOSS, OR DAMAGE CAUSED OR ALLEGED TO BE CAUSED DIRECTLY OR INDIRECTLY BY THE GOODS INCLUDING, BUT NOT LIMITED TO, ANY INDIRECT, SPECIAL, CONSEQUENTIAL, OR INCIDENTAL DAMAGES RESULTING FROM THE USE OR OPERATION OF THE GOODS OR ANY BREACH OF THIS WARRANTY. NOTWITHSTANDING THE ABOVE LIMITATIONS AND WARRANTIES, MANUFACTURER'S LIABILITY HEREUNDER FOR DAMAGES INCURRED BY PURCHASER OR OTHERS SHALL NOT EXCEED THE PRICE OF THE GOODS.
- 3.04. NO ACTION ARISING OUT OF ANY CLAIMED BREACH OF THIS WARRANTY OR TRANSACTIONS UNDER THIS WARRANTY MAY BE BROUGHT MORE THAN TWO (2) YEARS AFTER THE CAUSE OF ACTION HAS OCCURRED.

4. MISCELLANEOUS.

- 4.01. Proper Venue for any lawsuits arising from or related to this limited warranty shall be only in Guadalupe County, Texas.
- 4.02. Manufacturer may waive compliance with any of the terms of this limited warranty, but no waiver of any terms shall be deemed to be a waiver of any other term.
- 4.03. If any provision of this limited warranty shall violate any applicable law and is held to be unenforceable, then the invalidity of such provision shall not invalidate any other provisions herein.
- 4.04. Applicable law may provide rights and benefits to purchaser in addition to those provided herein.

KEEP FOR YOUR RECORDS

ATTENTION: Purchaser should fill in the blanks below for his reference when buying repair parts and/or for proper machine identification when applying for warranty.

Servis-Rhino Implement Model _____ Serial Number _____

Date Purchased _____ Dealer _____

ATTENTION:
READ YOUR OPERATOR'S MANUAL

RHINO®
1020 S. Sangamon Ave.
Gibson City, IL 60936
800-446-5158
Email: parts@servis-rhino.com





TO THE OWNER/OPERATOR/DEALER

To keep your implement running efficiently and safely, read your manual thoroughly and follow these directions and the Safety Messages in this Manual. The Table of Contents clearly identifies each section where you can easily find the information you need.

The OCCUPATIONAL SAFETY AND HEALTH ACT (1928.51 Subpart C) makes these minimum safety requirements of tractor operators:

REQUIRED OF THE OWNER:

1. Provide a Roll-Over-Protective Structure that meets the requirements of this Standard; and
2. Provide Seatbelts that meet the requirements of this paragraph of this Standard and SAE J4C; and
3. Ensure that each employee uses such Seatbelt while the tractor is moving; and
4. Ensure that each employee tightens the Seatbelt sufficiently to confine the employee to the protected area provided by the ROPS.

REQUIRED OF THE OPERATOR

1. Securely fasten seatbelt if the tractor has a ROPS.
 2. Where possible, avoid operating the tractor near ditches, embankments, and holes.
 3. Reduce speed when turning, crossing slopes, and on rough, slick, or muddy surfaces.
 4. Stay off slopes too steep for safe operation.
 5. Watch where you are going - especially at row ends, on roads, and around trees.
 6. Do not permit others to ride.
 7. Operate the tractor smoothly - no jerky turns, starts, or stops.
 8. Hitch only to the drawbar and hitch points recommended by the tractor manufacturer.
 9. When the tractor is stopped, set brakes securely and use park lock, if available.
-



MDB130 DITCHBANK ROTARY CUTTER
Printed U.S.A.

P/N 00792071P