



3-POINT POSTHOLE DIGGER 130P, 240P, 340P, & 440P

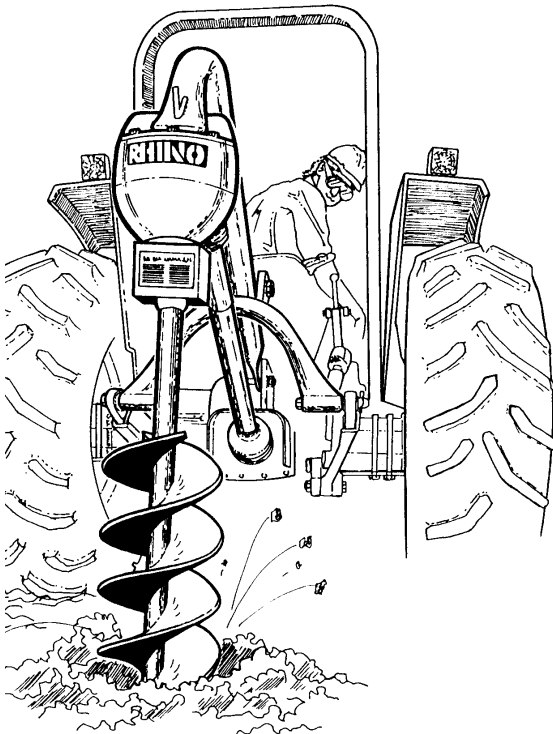
Rev 05-07

Part No. 01430870P

PART'S MANUAL



An Operator's Manual was shipped with the equipment in the Manual Canister. This Operator's Manual is an integral part of the safe operation of this machine and must be maintained with the unit at all times. **READ, UNDERSTAND, and FOLLOW** the Safety and Operation Instructions contained in this manual before operating the equipment. If the Operator's Manual is not with the equipment, contact your dealer or Servis-Rhino (800-446-5158) to obtain a Free copy before operating the equipment.



ATENCIÓN!

LEA EL INSTRUCTIVO

Si No Lee Ingles, Pida Ayuda a Alguien
Que Si Lo Lea Para Que le Traduzca las
Medidas de Seguridad.



RHINO®

1020 S. Sangamon Ave.
Gibson City, IL 60936
800-446-5158

Email: parts@servis-rhino.com

© 2007 Alamo Group Inc.



PARTS ORDERING GUIDE

The following instructions are offered to help eliminate needless delay and error in processing purchase orders for the equipment in this section.

1. The Parts Section is prepared in logical sequence and grouping of parts that belong to the basic machine featured in this manual. Part Numbers and Descriptions are given to help locate the parts and quantities required.
2. The Purchase Order must include the name and address of the person or organization ordering the parts, who should be charged, and if possible, the serial number of the machine for which the parts are ordered.
3. The Purchase Order must clearly list the quantity of each part, the complete and correct part number (be sure to include all periods), and the basic name of the part.
4. The Manufacturer reserves the right to substitute parts where applicable.
5. Some parts are unlisted items which are special production items not normally stocked and are subject to special handling. Request a quotation for such parts before sending a Purchase Order.
6. The Manufacturer reserves the right to change prices without prior notice.

NOTE: Please refer to The Safety Section in the front of this Manual for the proper Part Number when ordering Replacement Safety Decals.



For maximum safety and to guarantee optimum product reliability, always use genuine Servis-Rhino Parts. The use of inferior replacement parts may cause premature or catastrophic failure which could result in serious injury or death. Direct any questions regarding parts to:



RHINO®
1020 S. Sangamon Ave.
Gibson City, IL 60936
800-446-5158
Email: parts@servis-rhino.com

To the Owner/Operator/Dealer

All implements with moving parts are potentially hazardous. There is no substitute for a cautious, safe-minded operator who recognizes the potential hazards and follows reasonable safety practices. The manufacturer has designed this implement to be used with all its safety equipment properly attached to minimize the chance of accidents.

BEFORE YOU START! Read the safety messages on the implement and shown in your manual. Observe the rules of safety and common sense!



DANGER

FAILING TO FOLLOW SAFETY MESSAGES AND OPERATING INSTRUCTION CAN CAUSE SERIOUS BODILY INJURY OR EVEN DEATH TO OPERATOR AND OTHERS IN THE AREA.

1.



2. NO RIDERS. NO CHILDREN OPERATORS.



3. USE SAFETY SHOES, HARD HAT, SAFETY GLASSES, SEAT BELTS, ROPS & OPS.



4. BLOCK UP SECURELY BEFORE WORKING UNDER.



- Study and understand Operator's Manuals, Safety Decals, and Instructional Decals for tractor and implement to prevent misuse, abuse, and accidents. Practice before operating in a confined area or near passersby.
 - Learn how to stop engine suddenly in an emergency. Be alert for passersby and especially children.
- Allow no children on or near folding mower or tractor. Allow no riders on tractor or implement. Falling off may cause serious injury or death from being run over by tractor or mower or contact with rotating blades.
- Operate only with tractor having Roll-Over Protective Structure (ROPS) and with seat belt securely fastened to prevent injury and possible death from falling off or tractor overturn.
 - Personal Protective Equipment such as Hard Hat, Safety Glasses, Safety Shoes, & Ear Plugs are recommended.
- Block up or support raised machine and all lifted components securely before putting hands or feet under or working underneath any lifted component to prevent crushing injury or death from sudden dropping or inadvertent operation of controls. Make certain area is clear before lowering or folding.
- Before transporting, put Lift Lever in detent or full-lift position. Install Transport Safety Devices securely on folding mowers. Put Booms securely in Transport Rest.
 - Folding and Boom Mowers have raised center of gravity. Slow down when turning and on hillsides.
- Make certain that SMV sign, warning lights, and reflectors are clearly visible. Follow local traffic codes.
- Never operate with Cutting Head or Folding Section raised if passersby, bystanders, or traffic are in the area to reduce possibility of injury or death from objects thrown by Blades under Guards or mower structure.
- Before dismounting, secure implement in transport position or lower to ground.
 - Put tractor in park position or set brake, disengage PTO, stop engine, remove key, and wait until noise of rotation has ceased to prevent crushing by entanglement in rotating parts which could cause injury or death.
 - Never mount or dismount a moving vehicle. Crushing from runover may cause serious injury or death.

5. TRANSPORT SAFELY, LOCK UP.



6. USE SMV, LIGHTS, & REFLECTORS.



7. DO NOT OPERATE WITH CUTTER OR WING RAISED



8. DO NOT MOUNT OR DISMOUNT WHILE MOVING.



02967827

WARRANTY INFORMATION:

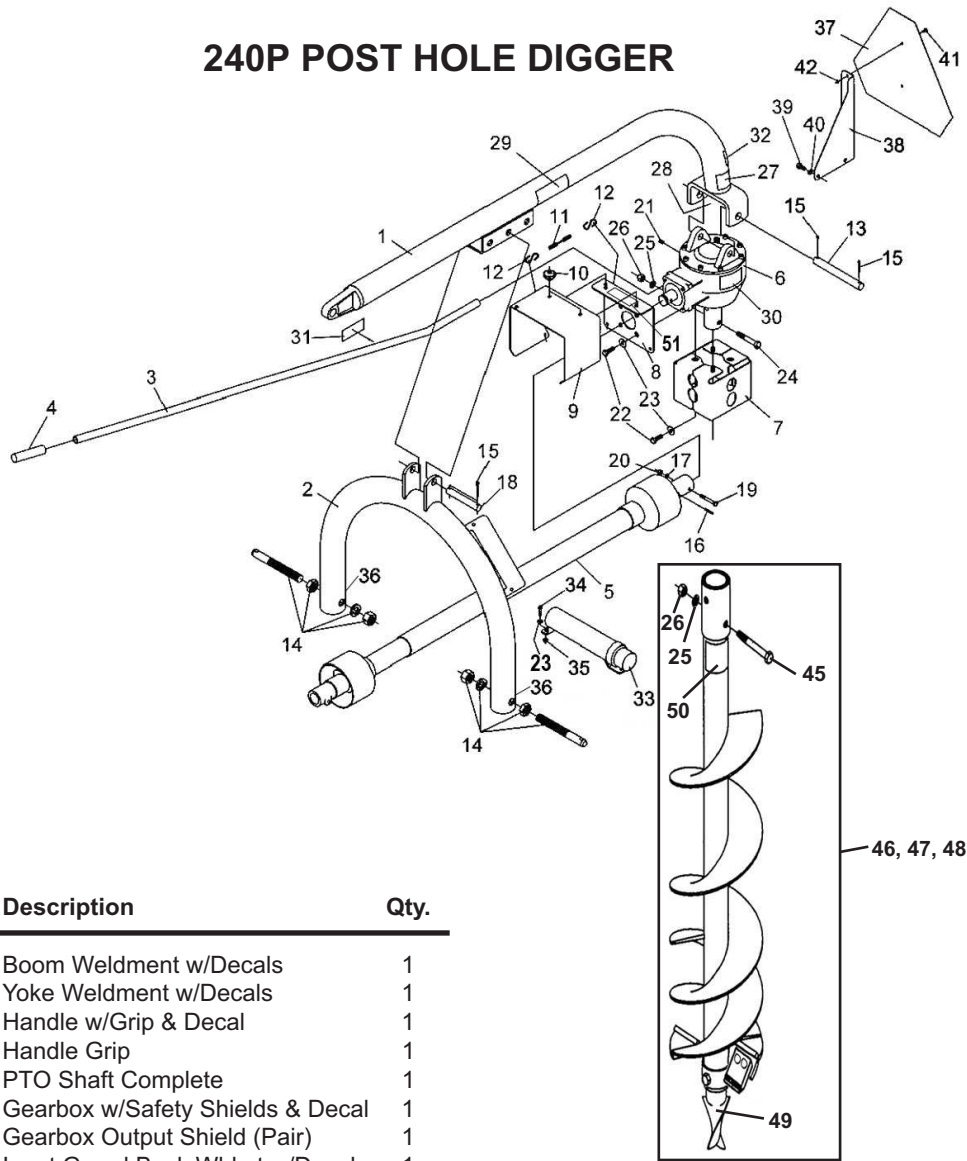
Read and understand the complete Warranty Statement found in this Manual. Fill out the Warranty Registration Form in full and return it to within 30 Days. Make certain the Serial Number of the Machine is recorded on the Warranty Card and on the Warranty Form that you retain.

240P, 340P & 440P 3 POINT POSTHOLE DIGGERS

ALPHABETICAL INDEX

CONTENTS	PAGE
240P Boom, Yoke, Gearbox and Related Parts.....	2A-1-1
340P Boom, Yoke, Gearbox and Related Parts.....	2A-1-2
440P Boom, Yoke, Gearbox and Related Parts.....	2A-1-3
Auger Points and Parts	2A-2-1, 2A-2-2
Down Force Kits	2A-5-1 thru 2A-5-3
Extensions	2A-2-2, 2A-2-3
Gearbox Assemblies	2A-4-1 thru 2A-4-3
Parking Stand Kits	2A-6-1, 2A-6-2
PTO Shafts	2A-3-1, 2A-3-2
Safety Decals	2A-7-1

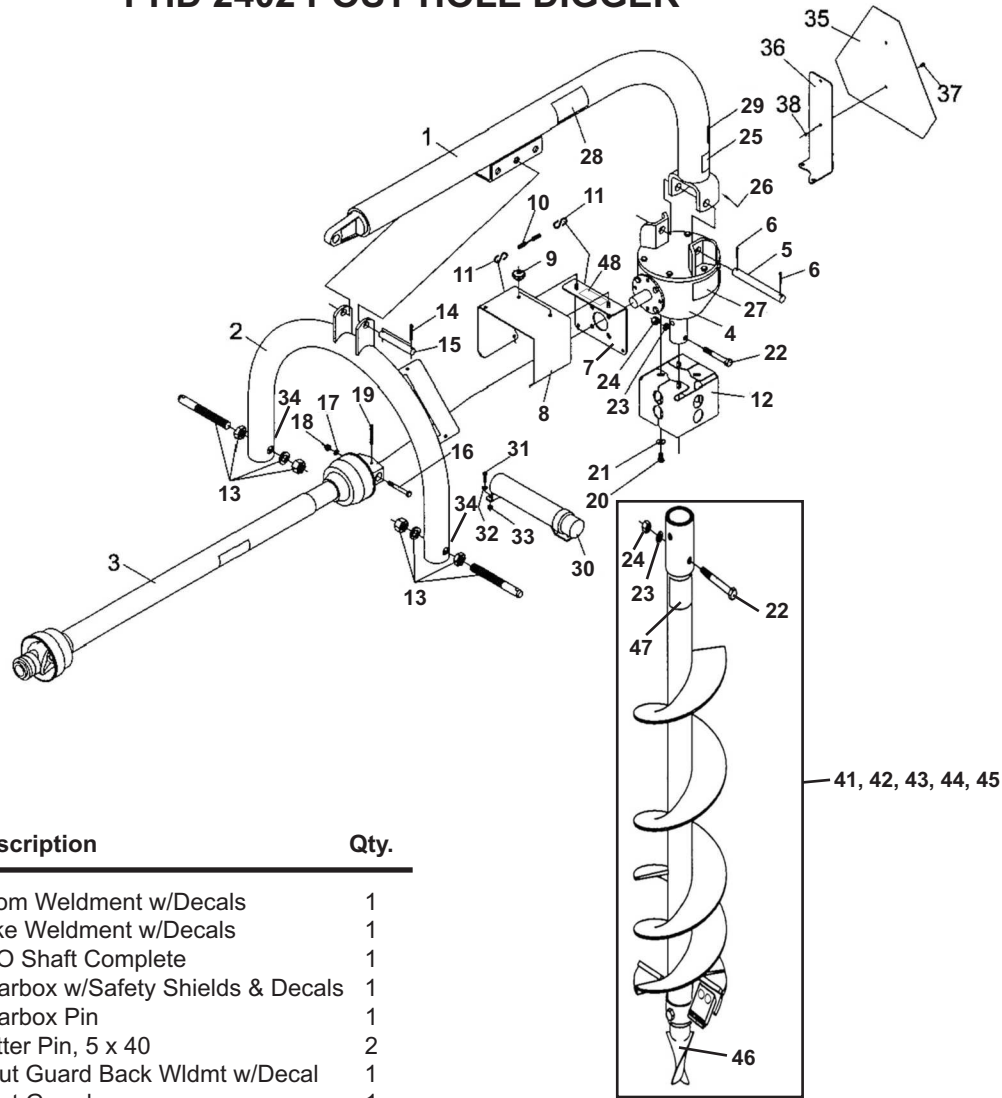
240P POST HOLE DIGGER



Ref. No.	Part No.	Description	Qty.
1	50072177	Boom Weldment w/Decals	1
2	50072179	Yoke Weldment w/Decals	1
3	50072182	Handle w/Grip & Decal	1
4	50072180	Handle Grip	1
5	50072183	PTO Shaft Complete	1
6	50072193	Gearbox w/Safety Shields & Decal	1
7	50072190	Gearbox Output Shield (Pair)	1
8	50072187	Input Guard Back Wldmt w/Decal	1
9	50072188	Input Guard	1
10	50072189	Knob, Threaded	2
11	50072194	Chain, Safety (3 Links)	1
12	50072195	S-Hook	2
13	50072192	Gearbox Hanger Pin	1
14	50072196	Lift Pin w/Hardware	2
15	21020614	Cotter Pin, 3/16 x 1-1/2	3
16	19432	Roll Pin, 3/16 x 1-1/4	1
17	15808	Lockwasher 5/16	1
18	50072197	Boom Adjustment Pin	1
19	50072198	Shear Bolt, 5/16 x 2-1/2 Gr 2	1
20	15528	Hex Nut, 5/16	1
21	1161006	Capscrew, 5/16 x 3/4 Gr 5	1
22	50072191	Bolt, M8 x 12MM	8
23	15918BH	Flatwasher, 1/4	9
24	20864	Capscrew, 1/2 x 3 Gr 5	2
25	15806	Lockwasher, 1/2	5
26	8151600	Hex Nut, 1/2	7
27	50072174	Decal, Danger (Rotating Parts)	1
28	50072176	Decal, Post Hole Digger Instr.	1
29	50072173	Decal, Danger (Keep Clear)	1
30	50072185	Decal, Notice (Gearbox)	1
31	50072181	Decal, Notice (Handle)	1
32	50072175	Decal, 811 (Call Before You Dig)	1
33	50072200	Manual Holder, Plastic	1

Ref. No.	Part No.	Description	Qty.
34	44186BH	Capscrew, 1/4 x 1 Gr 5	2
35	50072201	Hex Nut, 1/4 WHIZ Flange	2
36	50031213	Reflector, Red 2 x 4-1/2	2
37	94359	SMV Sign	1
38	50072178	Bracket, SMV Sign	1
39	19100BH	Capscrew, 3/8 x 3/4 Gr 5	2
40	15812	Lockwasher, 3/8	2
41	4140604	Screw, Mach Slit Pn Hd #10 x 1/2	2
42	8150600	Hex Nut, #10	2
44	50072225	Owner's Manual	1
45	20779	Capscrew, 1/2 x 3-1/2	3
46	50072104	Auger, Std. Duty 6" Semi-Dbl Flight	1
47	00780367	Auger, Hvy. Duty 6" Semi-Dbl Flight	1
48	50072105	Auger, Std. Duty 9" Semi-Dbl Flight	1
49	00780368	Auger, Hvy. Duty 9" Semi-Dbl Flight	1
50	50072106	Auger, Std. Duty 12" Semi-Dbl Flight	1
51	00780369	Auger, Hvy. Duty 12" Semi-Dbl Flight	1
52	50072199	Fishtail Auger Pt. (Bolt In) Std. Duty	1
53	00779803	Bit, Std 2 Pt. Pilot (Hvy. Duty Auger)	1
54	50072416	Decal, Danger (Guard Missing)	1
55	50073389	Decal, Danger (Shield Missing)	1

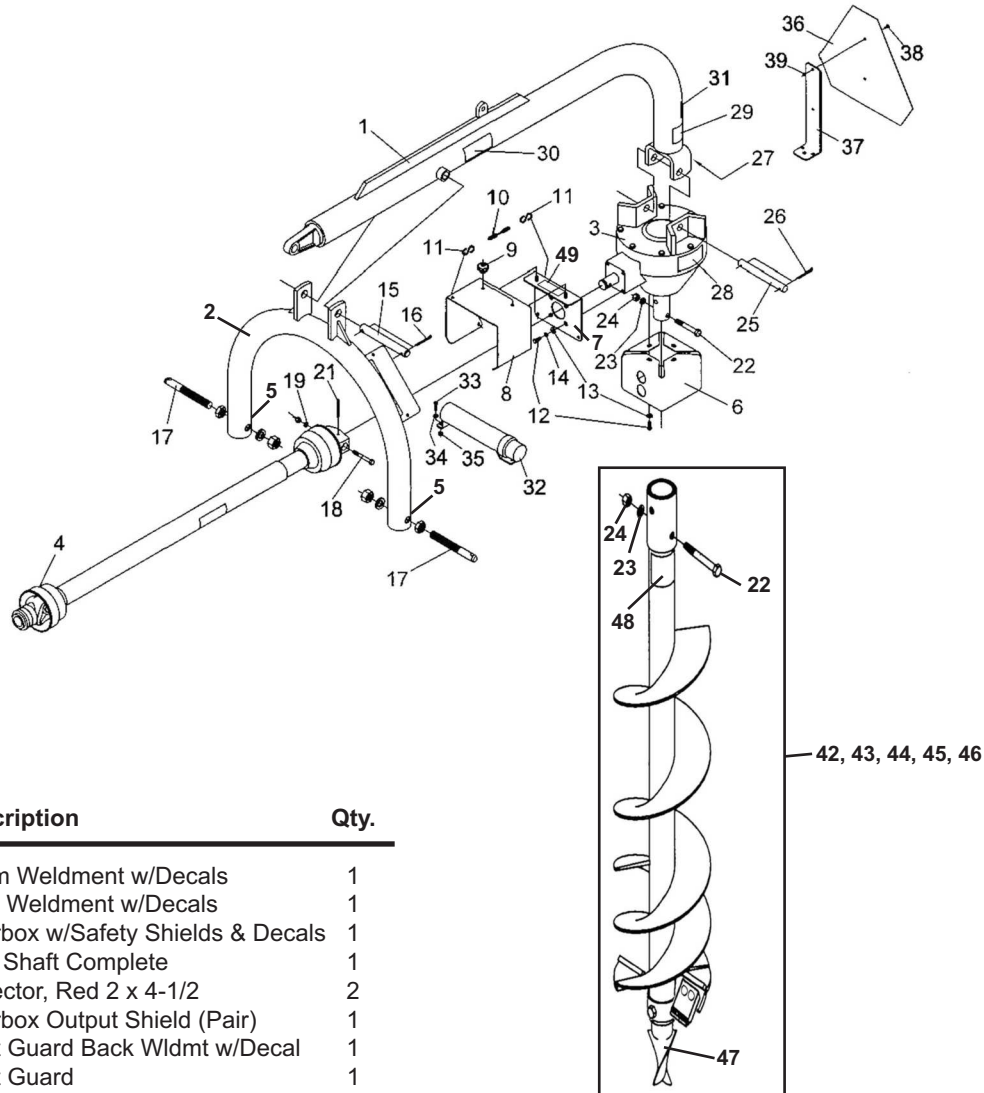
PHD 2402 POST HOLE DIGGER



Ref. No.	Part No.	Description	Qty.
1	50072209	Boom Weldment w/Decals	1
2	50072179	Yoke Weldment w/Decals	1
3	50072210	PTO Shaft Complete	1
4	50072212	Gearbox w/Safety Shields & Decals	1
5	50072213	Gearbox Pin	1
6	70495	Cotter Pin, 5 x 40	2
7	50072187	Input Guard Back Wldmt w/Decal	1
8	50072188	Input Guard	1
9	50072189	Knob, Threaded	2
10	50072194	Chain, Safety (3 Links)	1
11	50072195	S-Hook	2
12	50072190	Gearbox Output Shield (Pair)	1
13	50072196	Lift Pin w/Hardware	2
14	21020614	Cotter Pin, 3/16 x 1-1/2	2
15	50072197	Boom Adjustment Pin	1
16	50072214	Shear Bolt, 3/8 x 3 Gr 2	1
17	15812	Lockwasher 3/8	1
18	8151200	Hex Nut, 3/8	1
19	50072215	Roll Pin, 1/4 x 2-1/4	1
20	19100BH	Capscrew, 3/8 x 3/4 Gr 5	4
21	15915BH	Flatwasher, 3/8	4
22	20779	Capscrew, 1/2 x 3-1/2 Gr 5	5
23	15806	Lockwasher, 1/2	5
24	8151600	Hex Nut, 1/2	7
25	50072174	Decal, Danger (Rotating Parts)	1
26	50072176	Decal, Post Hole Digger Instr.	1
27	50072185	Decal, Notice (Gearbox)	1
28	50072173	Decal, Danger (Keep Clear)	1
29	50072175	Decal, 811 (Call Before You Dig)	1
30	50072200	Manual Holder, Plastic	1
31	44186BH	Capscrew, 1/4 x 1 Gr 5	2
32	15918BH	Flatwasher, 1/4	2
33	50072201	Hex Nut, 1/4 WHIZ Flange	2

Ref. No.	Part No.	Description	Qty.
34	50031213	Reflector, Red 2 x 4-1/2	2
35	94359	SMV Sign	1
36	50072216	Bracket, SMV Sign	1
37	4140604	Screw, Mach Slit Pn Hd #10 x 1/2	2
38	8150600	Hex Nut, #10	2
39		Decal, Bush Hog - 8" (Not Shown)	2
40	50072226	Owner's Manual	1
41	50072104	Auger, Std. Duty 6" Semi-Dbl Flight	1
	00780367	Auger, Hvy. Duty 6" Semi-Dbl Flight	1
42	50072105	Auger, Std. Duty 9" Semi-Dbl Flight	1
	00780368	Auger, Hvy. Duty 9" Semi-Dbl Flight	1
43	50072106	Auger, Std. Duty 12" Semi-Dbl Flight	1
	00780369	Auger, Hvy. Duty 12" Semi-Dbl Flight	1
44	00780371	Auger, Hvy. Duty 18" Semi-Dbl Flight	1
45	00780372	Auger, Hvy. Duty 24" Semi-Dbl Flight	1
46	50072199	Fishtail Auger Pt. (Bolt In) Std. Duty	1
	00779803	Bit, Std 2 Pt. Pilot (Hvy. Duty Auger)	1
47	50072416	Decal, Danger (Guard Missing)	1
48	50073389	Decal, Danger (Shield Missing)	1

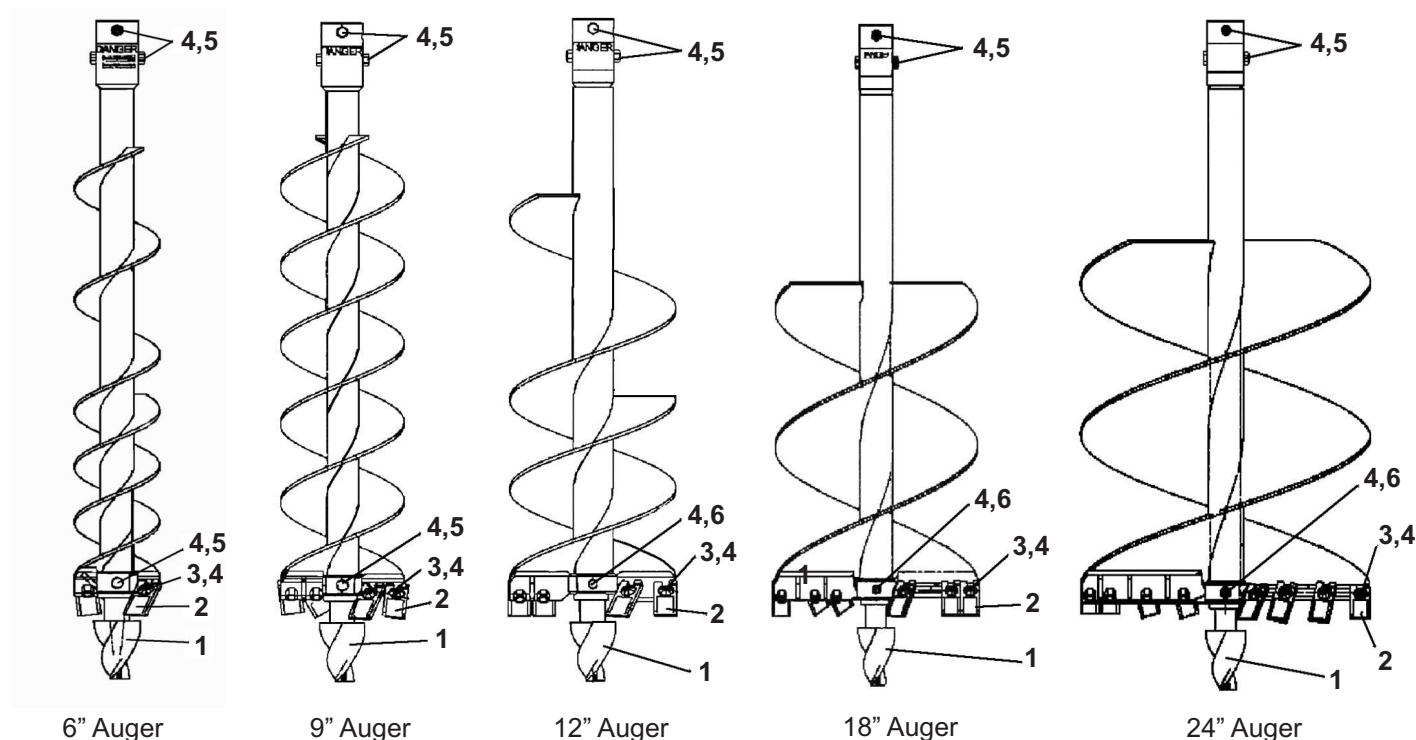
PHD 2403 POST HOLE DIGGER



Ref. No.	Part No.	Description	Qty.
1	50072218	Boom Weldment w/Decals	1
2	50072219	Yoke Weldment w/Decals	1
3	50072220	Gearbox w/Safety Shields & Decals	1
4	50072210	PTO Shaft Complete	1
5	50031213	Reflector, Red 2 x 4-1/2	2
6	50072221	Gearbox Output Shield (Pair)	1
7	50072187	Input Guard Back Wldmt w/Decal	1
8	50072188	Input Guard	1
9	50072189	Knob, Threaded	2
10	50072194	Chain, Safety (3 Links)	1
11	50072195	S-Hook	2
12	1161006	Capscrew, 5/16 x 3/4 Gr 5	6
13	15907BH	Flatwasher, 5/16	6
14	15808	Lockwasher, 5/16	4
15	50072222	Lift Pin, 1 x 8	1
16	15474	Cotter Pin, 1/4 x 1-3/4	2
17	50072196	Lift Pin w/Hardware	2
18	50072214	Shear Bolt, 3/8 x 3 Gr 2	1
19	15812	Lockwasher, 3/8	1
20	8151200	Hex Nut, 3/8	1
21	50072215	Roll Pin, 1/4 x 2-1/4	1
22	20779	Capscrew, 1/2 x 3-1/2 Gr 5	5
23	15806	Lockwasher, 1/2	5
24	8151600	Hex Nut, 1/2	7
25	50072223	Hanger Shaft, 7/8 x 7-3/4	1
26	20167	Cotter Pin, 3/16 x 2	2
27	50072176	Decal, Post Hole Digging Instr.	1
28	50072185	Decal, Notice (Gearbox)	1
29	50072174	Decal, Danger (Rotating Parts)	1
30	50072173	Decal, Danger (Keep Clear)	1
31	50072175	Decal, 811 (Call Before You Dig)	1
32	50072200	Manual Holder, Plastic	1
33	44186BH	Capscrew, 1/4 x 1 Gr 5	2

Ref. No.	Part No.	Description	Qty.
34	15918BH	Flatwasher, 1/4	2
35	50072201	Hex Nut, 1/4 WHIZ Flange	2
36	94359	SMV Sign	1
37	50072224	Bracket, SMV Sign	1
38	4140604	Screw, Mach Slit Pn Hd #10 x 1/2	2
39	8150600	Hex Nut, #10	2
40	50063360	Decal, Bush Hog - 8" (Not Shown)	2
41	50072227	Owner's Manual	1
42	50072104	Auger, Std. Duty 6" Semi-Dbl Flight	1
43	00780367	Auger, Hvy. Duty 6" Semi-Dbl Flight	1
44	50072105	Auger, Std. Duty 9" Semi-Dbl Flight	1
45	00780368	Auger, Hvy. Duty 9" Semi-Dbl Flight	1
46	50072106	Auger, Std. Duty 12" Semi-Dbl Flight	1
47	00780369	Auger, Hvy. Duty 12" Semi-Dbl Flight	1
48	00780371	Auger, Hvy. Duty 18" Semi-Dbl Flight	1
49	00780372	Auger, Hvy. Duty 24" Semi-Dbl Flight	1
50	50072199	Fishtail Auger Pt. (Bolt In) Std. Duty	1
51	00779803	Bit, Std 2 Pt. Pilot (Hvy. Duty Auger)	1
52	50072416	Decal, Danger (Guard Missing)	1
53	50073389	Decal, Danger (Shield Missing)	1

PHD 2401, 2402 & 2403 POST HOLE DIGGER HEAVY DUTY AUGER



Ref. No.	Part No.	Description	Qty. Req'd Per Auger Size				
			6"	9"	12"	18"	24"
1	00779803	Bit, Standard, 2 Pt. Pilot	1	1	1	1	1
2	00780374	Tooth, Auger (40/50 Aggressor)	2	4	4	6	8
3	02886900	Carriage Bolt, 1/2 x 1-1/2 Gr 5	2	4	4	6	8
4	-----	Locknut, Top Lock 1/2	5	7	7	9	11
5	-----	Capscrew, 1/2 x 3-1/2 Gr 5	3	3	2	2	2
6	-----	Capscrew, 1/2 x 4 Gr 5	-	-	1	1	1

Note: When ordering a complete Auger Assembly refer to Whole Good No. Listed on Price Sheet.

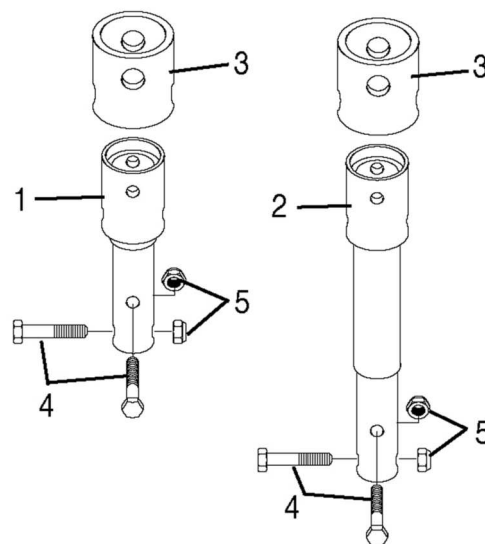
00780367 - 6"
 00780368 - 9"
 00780369 - 12"
 00780371 - 18"
 00780372 - 24"

PHD 2401, 2402 & 2403 POST HOLE DIGGER HEAVY DUTY AUGER EXTENSIONS

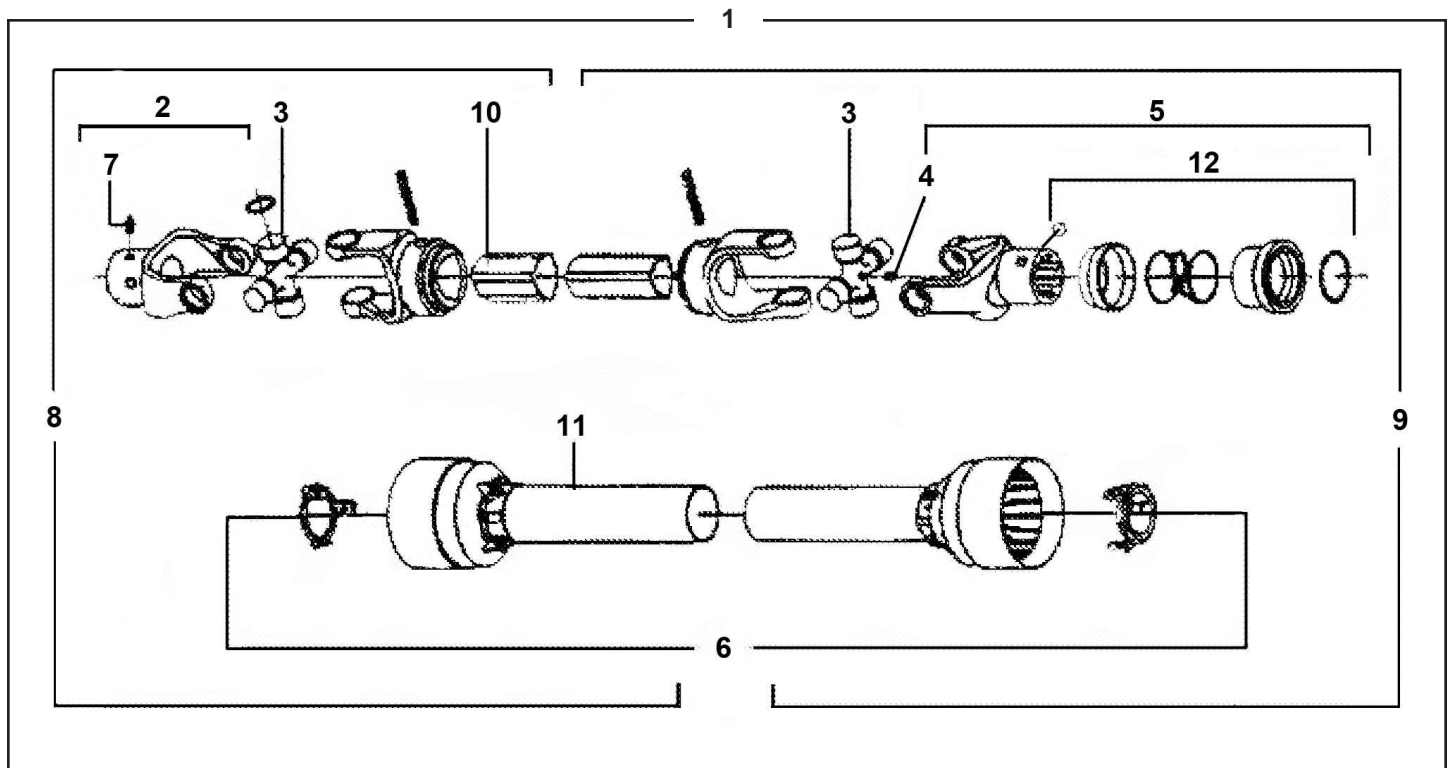
Ref. No.	Part No.	Description	Qty.
1	01100740	Extension, 7"	1
2	01100760	Extension, 14"	1
3	00768123	Shield, Plastic	1
4	-----	Capscrew, 1/2 x 3-1/4 Gr 5	2
5	-----	Locknut, Toplock, 1/2	2

Note: When ordering a complete Auger Extension refer to Whole Good No. Listed on Price Sheet.

01A01030 - 7"
 01A01040 - 14"



PTO SHAFT COMPLETE PHD 2401 POST HOLE DIGGER



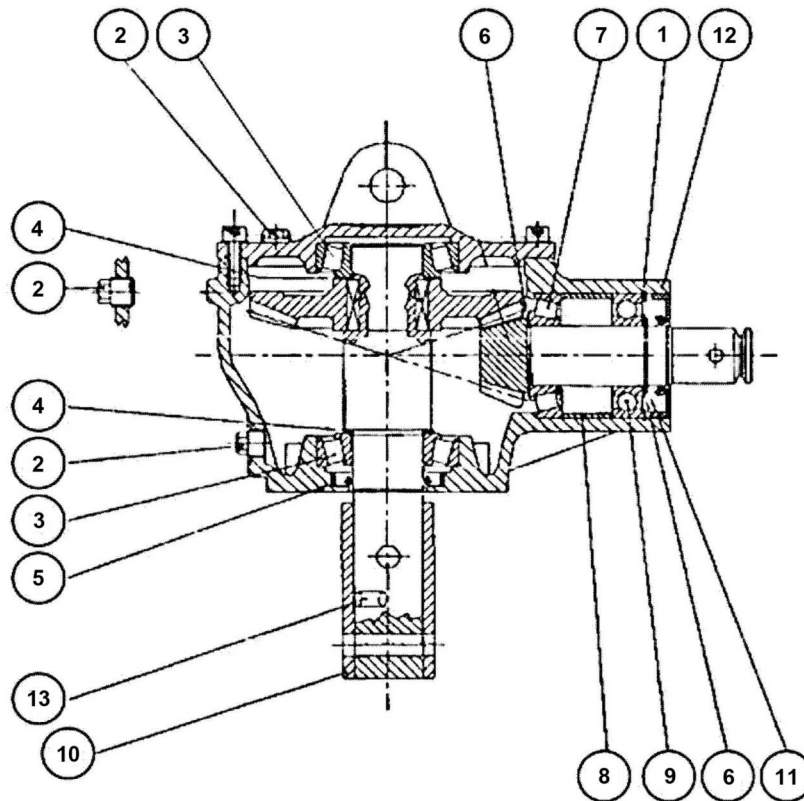
Ref. No.	Part No.	Description	Qty.
1	50072183	PTO Shaft Complete	1
2	50050240	Special Yoke	1
3	95006BH	Journal Assembly	1
4	50072206	Grease Zerk, M8 x 1.0 x 45°	2
5	50072207	Complete Collar Yoke	1
6	50072208	Complete Guard w/Inst. Manual	1
7	63946	Grease Zerk, M8 x 1	1
8	-----	1/2 PTO (Implement End)	1
9	-----	1/2 PTO (Tractor End)	1
10	78786	Decal, Danger	1
11	78608	Decal, Danger	1
12	50017480	Ball Collar Kit, 1-3/8	1

This diagram shows an exploded view of a mechanical assembly. The components are numbered as follows:

- 1**: The main shaft or central component.
- 2**: A bracket indicating a sub-assembly of parts 1, 2, 3, 4, 5, 6, 7, 8, 9, 10, 11, 12, 13.
- 3**: A small component, possibly a pin or clip, located near the main shaft.
- 4**: A component that appears to be a bearing or a bush.
- 5**: A component that appears to be a bearing or a bush.
- 6**: A component that appears to be a bearing or a bush.
- 7**: A component that appears to be a bearing or a bush.
- 8**: A bracket indicating a sub-assembly of parts 1, 2, 3, 4, 5, 6, 7, 8, 9, 10, 11, 12, 13.
- 9**: A component that appears to be a bearing or a bush.
- 10**: A component that appears to be a bearing or a bush.
- 11**: A component that appears to be a bearing or a bush.
- 12**: A component that appears to be a bearing or a bush.
- 13**: A component that appears to be a bearing or a bush.

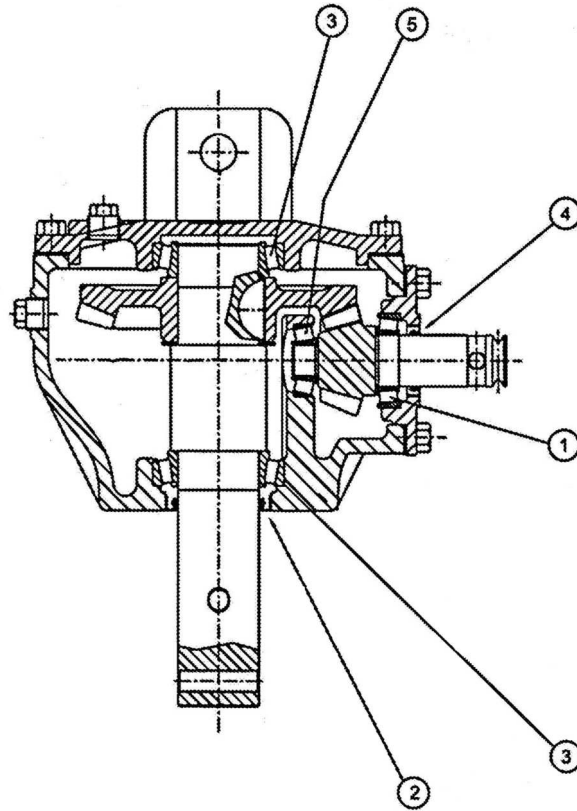
2A-3-2

50072184 - GEARBOX ASSEMBLY PHD 2401 POST HOLE DIGGER



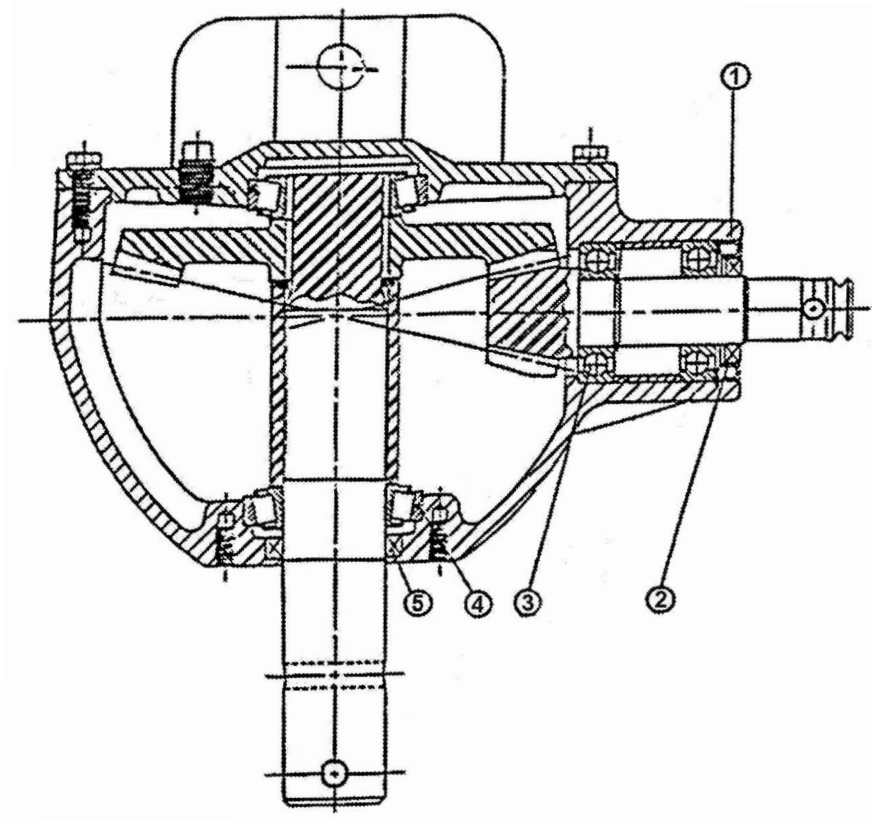
Ref. No.	Part No.	Description	Qty.
1	70133	Retaining Ring (72 x 75 x 2.5)	1
2	70292	Oil Plug	3
3	70795	Bearing 30208	2
4	-----	Shim Kit (40.3 x 51.5)	2
5	50072202	Oil Seal (40 x 62 x 7)	1
6	-----	Shim Kit (35.3 x 48)	2
7	70797	Bearing 30207	1
8	50072203	Spacer	1
9	71453	Ball Bearing 6207 (35 x 72 x 17)	1
10	50072204	Bushing	1
11	70110	Retaining Ring (35 x 33 x 2.5)	1
12	70108	Oil Seal (35 x 72 x 10)	1
13	50072205	Pin, 8 x 12 Din 1481	1

50072211 - GEARBOX ASSEMBLY PHD 2402 POST HOLE DIGGER



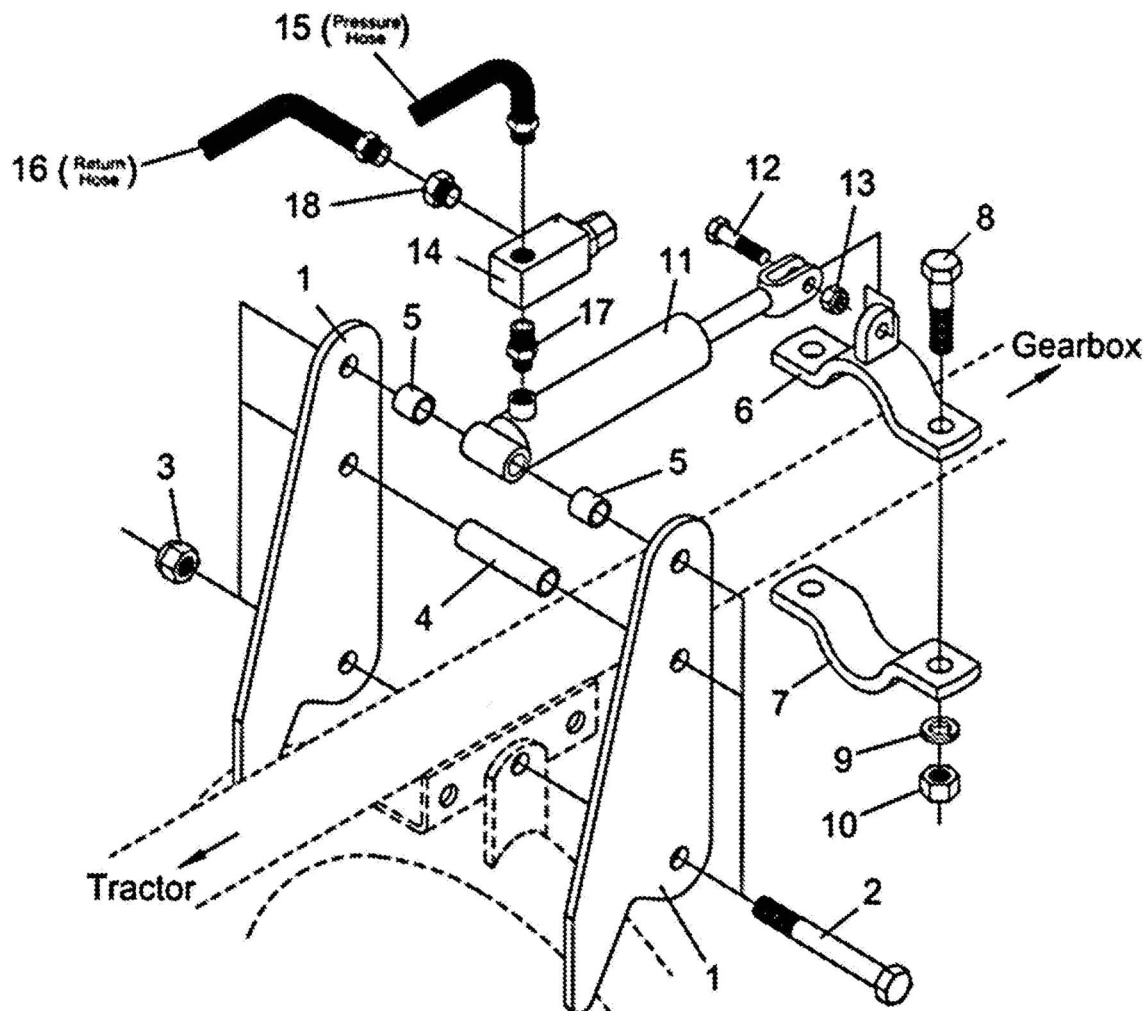
Ref. No.	Part No.	Description	Qty.
1	71346	Bearing LM67048-LM67010	1
2	71495	Seal, 50.8 x 66.62 x 7.92	1
3	71351	Roller Bearing, LM104949-LM104911	2
4	71352	Dust Lip, 31.5 x 44.5 x 7.92	1
5	71355	Roller Bearing, LM11910-LM11949	1

50072217 - GEARBOX ASSEMBLY PHD 2403 POST HOLE DIGGER



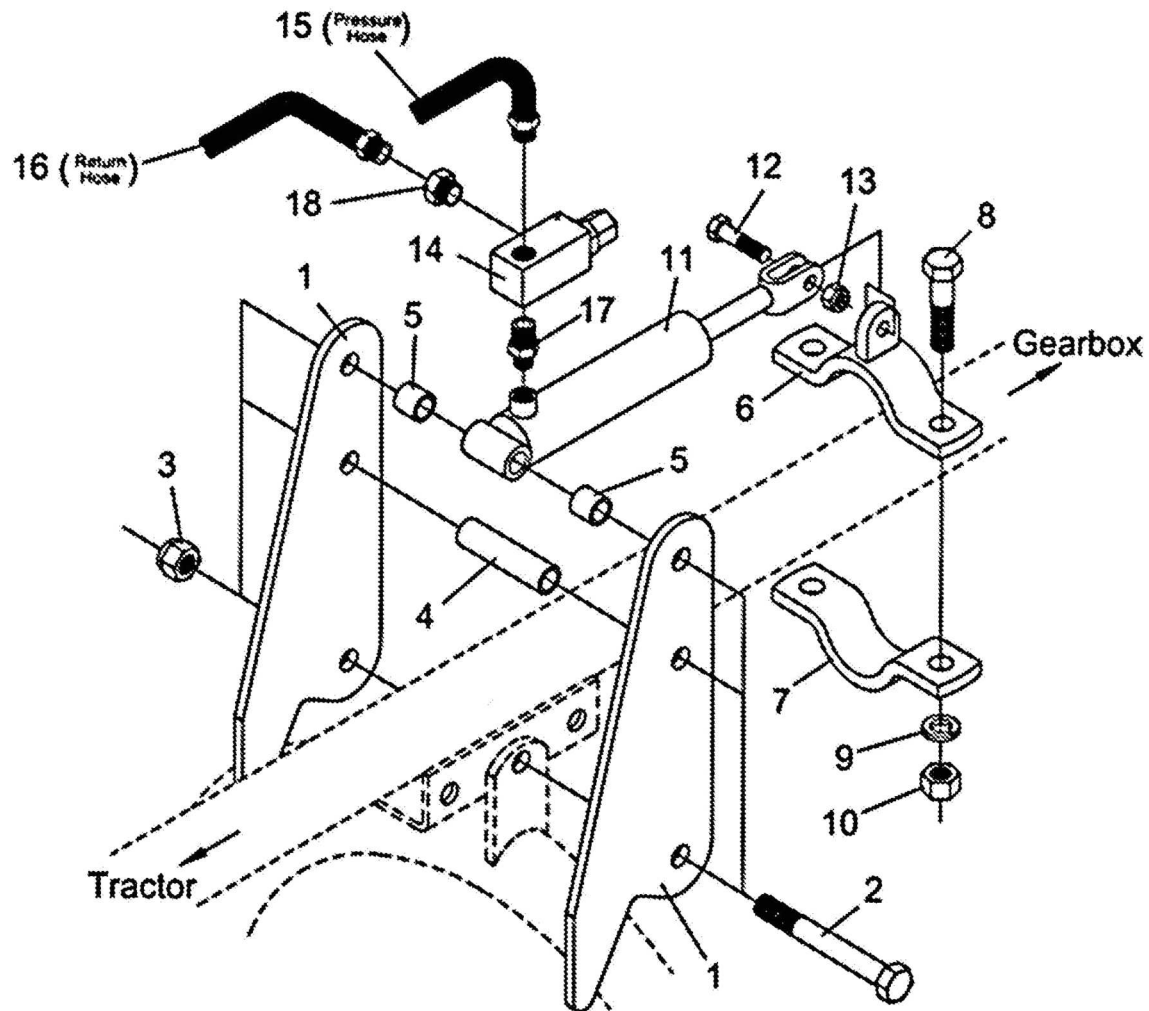
Ref. No.	Part No.	Description	Qty.
1	50072411	Seal Adapter	1
2	50072412	Input Seal, 35 x 72 x 10	1
3	50072413	Bearing, 207K Ball	2
4	50072414	Bearing Assembly 30210	2
5	50072415	Output Seal, 70 x 50 x 12	1

50072109 HYDRAULIC DOWN FORCE KIT PHD 2401 POST HOLE DIGGER



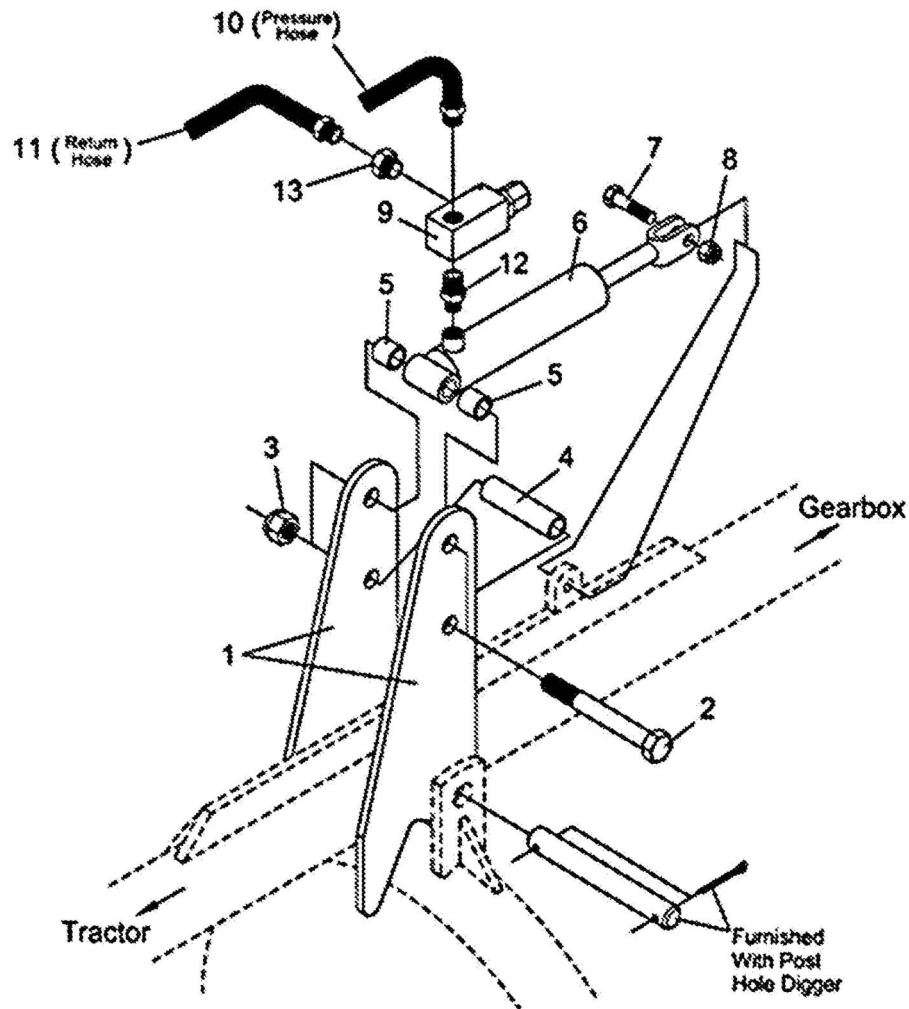
Ref. No.	Part No.	Description	Qty.
1	50072417	Pivot Plate	2
2	20207	Capscrew, 3/4 x 6 Gr 5	3
3	50072418	Hex Nut, 3/4 Nylock	3
4	50072419	Long Spacer, 3-7/8	1
5	50072420	Short Spacer, 15/16	2
6	50072421	Upper Clamp Weldment	1
7	50072422	Lower Clamp Half	1
8	19021	Capscrew, 3/4 x 3 Gr 5	2
9	146	Lockwasher, 3/4	2
10	19517	Hex Nut, 3/4	2
11	50072423	Hydraulic Cylinder, 1-1/2 x 6	1
12	20110BH	Capscrew, 1/2 x 2 Gr 5	1
13	50072424	Hex Nut, 1/2 Nylock	1
14	50072425	Relief Valve	1
15	50072426	Hyd. Hose, 3/8 x 60	1
16	50072427	Hyd. Hose, 3/8 x 72	1
17	50072428	Adapter Fitting, 3/8 to 1/2	1
18	50072429	Reducer Fitting, 1/2 to 3/8	1

50072110 HYDRAULIC DOWN FORCE KIT PHD 2402 POST HOLE DIGGER



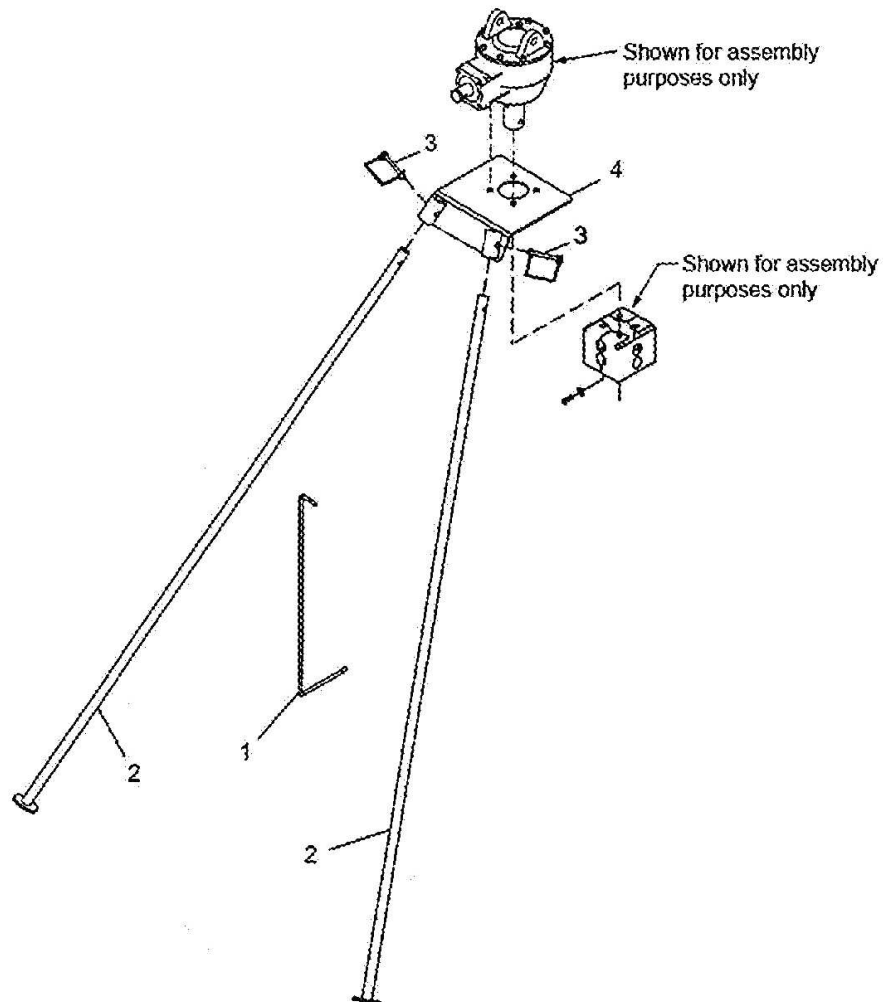
Ref. No.	Part No.	Description	Qty.
1	50072417	Pivot Plate	2
2	20207	Capscrew, 3/4 x 6 Gr 5	3
3	50072418	Hex Nut, 3/4 Nylock	3
4	50072419	Long Spacer, 3-7/8	1
5	50072420	Short Spacer, 15/16	2
6	50072430	Upper Clamp Weldment	1
7	50072431	Lower Clamp Half	1
8	19021	Capscrew, 3/4 x 3 Gr 5	2
9	146	Lockwasher, 3/4	2
10	19517	Hex Nut, 3/4	2
11	50072423	Hydraulic Cylinder, 1-1/2 x 6	1
12	20110BH	Capscrew, 1/2 x 2 Gr 5	1
13	50072424	Hex Nut, 1/2 Nylock	1
14	50072425	Relief Valve	1
15	50072426	Hyd. Hose, 3/8 x 60	1
16	50072427	Hyd. Hose, 3/8 x 72	1
17	50072428	Adapter Fitting, 3/8 to 1/2	1
18	50072429	Reducer Fitting, 1/2 to 3/8	1

50072112 HYDRAULIC DOWN FORCE KIT PHD 2403 POST HOLE DIGGER



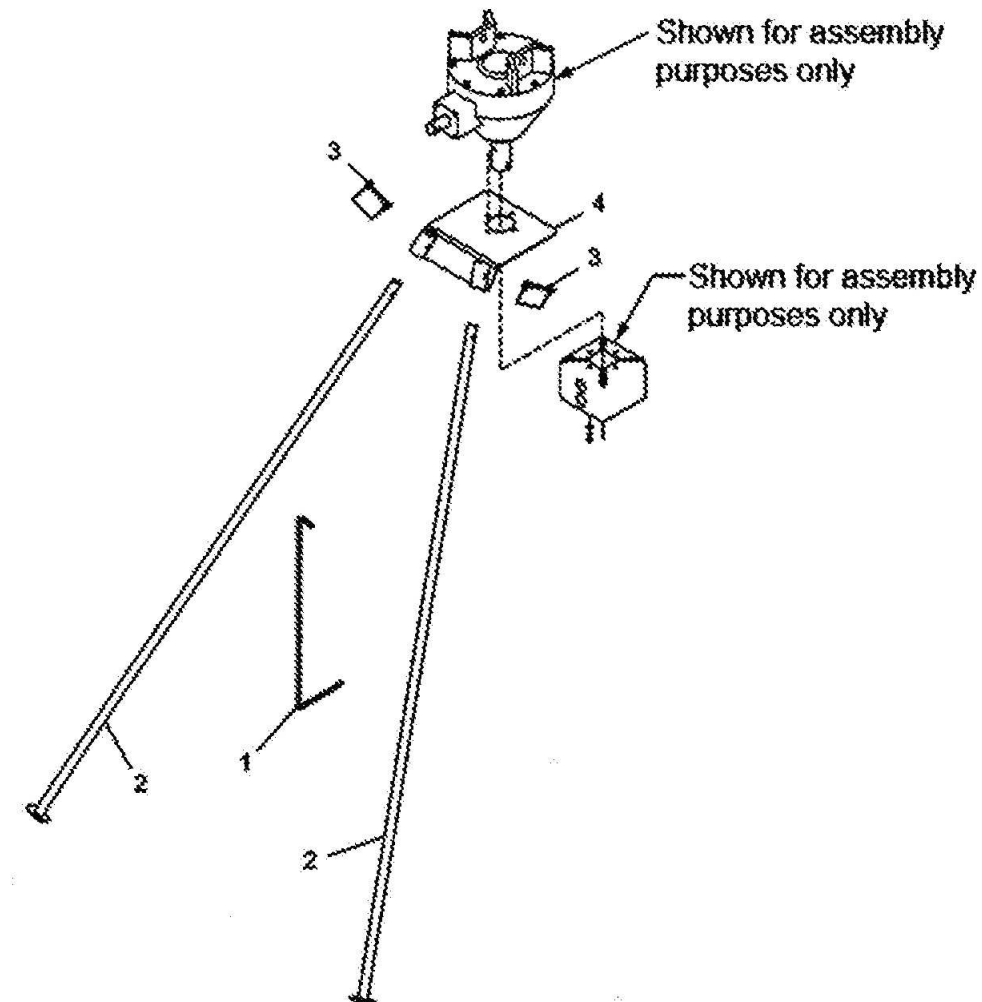
Ref. No.	Part No.	Description	Qty.
1	50072432	Pivot Plate	2
2	20207	Capscrew, 3/4 x 6 Gr 5	2
3	50072418	Hex Nut, 3/4 Nylock	2
4	50072433	Long Spacer, 4-1/8	1
5	50072434	Short Spacer, 1-1/16	2
6	50072423	Hydraulic Cylinder	1
7	20110BH	Capscrew, 1/2 x 2 Gr 5	1
8	50072424	Hex Nut, 1/2 Nylock	1
9	50072425	Relief Valve	1
10	50072426	Hyd. Hose, 3/8 x 60	1
11	50072427	Hyd. Hose, 3/8 x 72	1
12	50072428	Adapter Fitting, 3/8 to 1/2	1
13	50072429	Reducer Fitting, 1/2 to 3/8	1

50072108 - PARKING STAND KIT **PHD 2401 POST HOLE DIGGER** **PHD 2402 POST HOLE DIGGER**



Ref. No.	Part No.	Description	Qty.
1	50072435	Hook, PHD/PTO	1
2	50072436	Leg, PHD Stand	2
3	50072437	Pin, Locking 5/16"Ø	2
4	50072438	Plate, Weldment Stand	1

50072111 - PARKING STAND KIT PHD 2403 POST HOLE DIGGER



Ref. No.	Part No.	Description	Qty.
1	50072435	Hook, PHD/PTO	1
2	50072436	Leg, PHD Stand	2
3	50072437	Pin, Locking 5/16"Ø	2
4	50072439	Plate, Weldment Stand	1

SAFETY DECALS



1



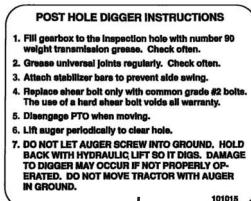
2



Know what's below.
Call before you dig.

101358

3



4

NOTICE
Bend handle as needed
for comfortable operation
(See Owners Manual)

101200

5

NOTICE!
GEARBOX SHIPPED WITHOUT OIL.
Fill to proper level with EP-90
gear lubricant. READ operator's manual.

101298

6



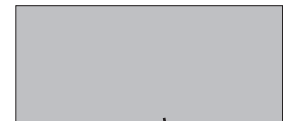
7



8



9



10

Ref. No.	Part No.	Description	Qty.
1	50072173	Decal, Danger (Keep Clean)	1
2	50072174	Decal, Danger (Rotating Parts)	1
3	50072175	Decal, 811 (Call Before You Dig)	1
4	50072176	Decal, Post Hole Digger Instr.	1
5	50072181	Decal, Notice (Handle) - PHD2401 Only	1
6	50072185	Decal, Notice (Gearbox)	1
7	50072416	Decal, Danger (Guard Missing)	1
8	50073389	Decal, Danger (Shield Missing)	1
9	50063360	Decal, Bush Hog - 8"	2
10	50031213	Reflector, Red 2 x 4-1/2	1

SERVIS-RHINO

LIMITED WARRANTY

1. LIMITED WARRANTIES

- 1.01.Servis-Rhino warrants for one year from the purchase date to the original non-commercial, governmental, or municipal purchaser ("Purchaser") and warrants for six months to the original commercial or industrial purchaser ("Purchaser") that the goods purchased are free from defects in material or workmanship.
- 1.02.Manufacturer will replace for the Purchaser any part or parts found, upon examination at one of its factories, to be defective under normal use and service due to defects in material or workmanship.
- 1.03.This limited warranty does not apply to any part of the goods which has been subjected to improper or abnormal use, negligence, alteration, modification, or accident, damaged due to lack of maintenance or use of wrong fuel, oil, or lubricants, or which has served its normal life. This limited warranty does not apply to any part of any internal combustion engine, or expendable items such as blades, shields, guards, or pneumatic tires except as specifically found in your Operator's Manual.
- 1.04.Except as provided herein, no employee, agent, Dealer, or other person is authorized to give any warranties of any nature on behalf of Manufacturer.

2. REMEDIES AND PROCEDURES.

- 2.01.This limited warranty is not effective unless the Purchaser returns the Registration and Warranty Form to Manufacturer within 30 days of purchase.
- 2.02.Purchaser claims must be made in writing to the Authorized Dealer ("Dealer") from whom Purchaser purchased the goods or an approved Authorized Dealer ("Dealer") within 30 days after Purchaser learns of the facts on which the claim is based.
- 2.03.Purchaser is responsible for returning the goods in question to the Dealer.
- 2.04.If after examining the goods and/or parts in question, Manufacturer finds them to be defective under normal use and service due to defects in material or workmanship, Manufacturer will:
 - (a) Repair or replace the defective goods or part(s) or
 - (b) Reimburse Purchaser for the cost of the part(s) and reasonable labor charges (as determined by Manufacturer) if Purchaser paid for the repair and/or replacement prior to the final determination of applicability of the warranty by Manufacturer.The choice of remedy shall belong to Manufacturer.
- 2.05.Purchaser is responsible for any labor charges exceeding a reasonable amount as determined by Manufacturer and for returning the goods to the Dealer, whether or not the claim is approved. Purchaser is responsible for the transportation cost for the goods or part(s) from the Dealer to the designated factory.

3. LIMITATION OF LIABILITY.

- 3.01.MANUFACTURER DISCLAIMS ANY EXPRESS (EXCEPT AS SET FORTH HEREIN) AND IMPLIED WARRANTIES WITH RESPECT TO THE GOODS INCLUDING, BUT NOT LIMITED TO, MERCHANTABILITY AND FITNESS FOR A PARTICULAR PURPOSE.
- 3.02.MANUFACTURER MAKES NO WARRANTY AS TO THE DESIGN, CAPABILITY, CAPACITY, OR SUITABILITY FOR USE OF THE GOODS.
- 3.03.EXCEPT AS PROVIDED HEREIN, MANUFACTURER SHALL HAVE NO LIABILITY OR RESPONSIBILITY TO PURCHASER OR ANY OTHER PERSON OR ENTITY WITH RESPECT TO ANY LIABILITY, LOSS, OR DAMAGE CAUSED OR ALLEGED TO BE CAUSED DIRECTLY OR INDIRECTLY BY THE GOODS INCLUDING, BUT NOT LIMITED TO, ANY INDIRECT, SPECIAL, CONSEQUENTIAL, OR INCIDENTAL DAMAGES RESULTING FROM THE USE OR OPERATION OF THE GOODS OR ANY BREACH OF THIS WARRANTY. NOTWITHSTANDING THE ABOVE LIMITATIONS AND WARRANTIES, MANUFACTURER'S LIABILITY HEREUNDER FOR DAMAGES INCURRED BY PURCHASER OR OTHERS SHALL NOT EXCEED THE PRICE OF THE GOODS.
- 3.04.NO ACTION ARISING OUT OF ANY CLAIMED BREACH OF THIS WARRANTY OR TRANSACTIONS UNDER THIS WARRANTY MAY BE BROUGHT MORE THAN TWO (2) YEARS AFTER THE CAUSE OF ACTION HAS OCCURRED.

4. MISCELLANEOUS.

- 4.01.Proper Venue for any lawsuits arising from or related to this limited warranty shall be only in Guadalupe County, Texas.
- 4.02.Manufacturer may waive compliance with any of the terms of this limited warranty, but no waiver of any terms shall be deemed to be a waiver of any other term.
- 4.03.If any provision of this limited warranty shall violate any applicable law and is held to be unenforceable, then the invalidity of such provision shall not invalidate any other provisions herein.
- 4.04.Applicable law may provide rights and benefits to purchaser in addition to those provided herein.

KEEP FOR YOUR RECORDS

ATTENTION: Purchaser should fill in the blanks below for his reference when buying repair parts and/or for proper machine identification when applying for warranty.

Servis-Rhino Implement Model _____ Serial Number _____

Date Purchased _____ Dealer _____

ATTENTION:
READ YOUR OPERATOR'S MANUAL

RHINO®
1020 S. Sangamon Ave.
Gibson City, IL 60936
800-446-5158
Email: parts@servis-rhino.com



