



# SERVICE BULLETIN

1020 S.Sangamon Ave. Gibson City, IL 60936 Ph# (217) 784-4261 Fax# (217) 784-1093

NO. 2016-01R

June 01, 2016

**PRODUCTS AFFECTED :**

**3100, 3150, 4105, 4150, 4155, 5100, & 5150 - Rhino Rotary Cutters**

**S/N# = 31,052-Below**

**SUBJECT:**

**Rhino has received reports of the wing fold cylinder mount lug interfering with the cylinder clevis. This interference creates a potential for cylinder rod and or clevis failure. It is necessary to install the Wing Bumper Kits to prevent damage to the cylinder.**

**SERVICE INFORMATION:**

- 1. Order Field Kit - 00791864 for 15' Units - (One kit provides parts for both wings)  
- 00791865 for 10' Units**
- 2. Follow Install Instructions**
- 3. Recheck Hardware After Use**



**SECURELY SUPPORT or block up raised equipment, mower center section, wings, axles and wheels.**

- **BLOCK UP** and securely support equipment before putting any part of body under raised equipment or lifted components
- **DO NOT** crawl or work under implement until it is securely blocked up



**The operator and all support personnel should wear hard hats, safety shoes, safety glasses, and proper hearing protection at all times for protection from injury including injury from items that may be thrown by the equipment.**

**PARTS REQUIRED:** Field Bumper Kit = **00791864** for 15' units and **00791865** for 10' units.

**WARRANTY PROCEDURE:** Submit a completed application for warranty to Rhino listing the model and serial number of the repaired unit to receive parts and labor credit. Reference Service Bulliten 2016-01R on your claim.

**WARRANTY LABOR HOURS - ALLOWED: 1Hr.**

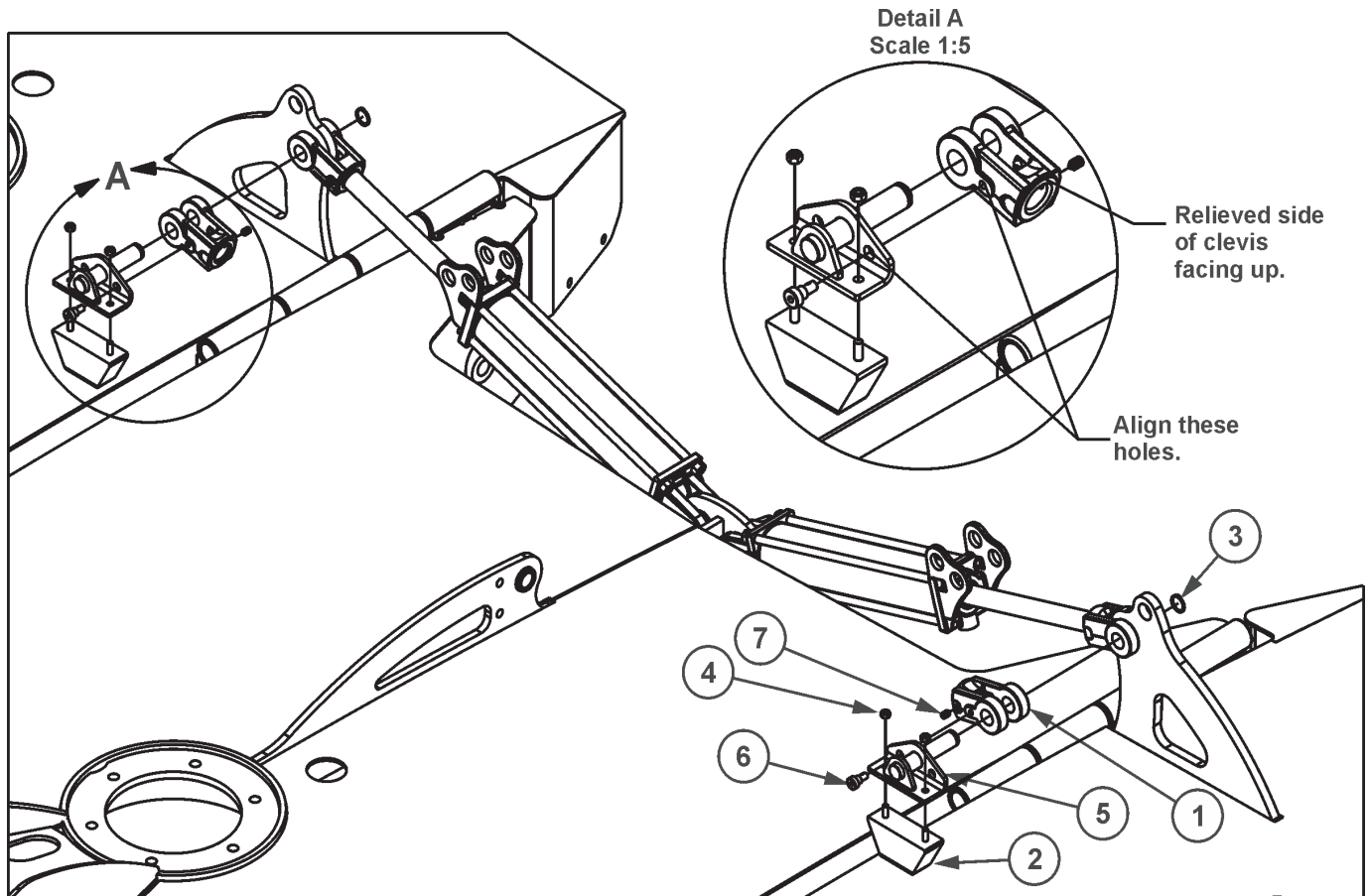
**TERMINATION DATE: December 1, 2016**

**BY: TECHNICAL SERVICE**



# SERVICE BULLETIN

1020 S.Sangamon Ave. Gibson City, IL 60936 Ph# (217) 784-4261 Fax# (217) 784-1093



**NOTE: 15' UNIT SHOWN, KIT FOR 10' UNITS FOR WING SIDE ONLY**

## **Installation Instructions** - Torque all hardware using general torque specifications

1. Lower wings and support with stands. Relieve all hydraulic pressure. Ensure the wings and center decks are fully supported before proceeding!

**\*\*WARNING\*\*** - Do not use a clamping device when removing/installing cylinder rod clevis.

2. Loosen set screw on clevis. Remove and discard existing cylinder rod clevis, clevis pins, and cotter pins. Note the position of the clevis on the rod by measurement or by counting turns when removing, to minimize adjustments that may be necessary later to engage wing lock pins.

3. Install new cylinder clevis (1). Match the previous clevis to rod position as mentioned in step 2. Install set screw (7) (Included with Clevis). Align the clevis with the wing cylinder lug with the relieved side of the clevis facing up; See illustration. **Do not damage the rod surface!**

4. Install new Wing Bumper Pin Weldment (5) with the formed bracket side of pin oriented forward; See illustration. Secure with the External Retaining Ring (3).

5. Turn pin weldment to align holes between the pin and tapped hole on the clevis. Install the 3/8" Locking Shoulder Screw (6).

6. Install Rubber Wing Bumper (2) and 8mm nuts (4).

7. Fold each wing. Ensure wing transport locking pins freely pass through the holes in the cylinder cap casting and wing cylinder lug. Small adjustments may be necessary to the clevis and rod position. Remember to keep relieved side of clevis facing up as shown in detail "A". Ensure the wing cylinder lug does not contact the clevis when the cylinder is fully retracted. **Do not proceed until all these requirements are met!**

**BY: TECHNICAL SERVICE**