



# TX1500/1700

## TRI-DECK FLEX FINISHING MOWER

Published 08/16

Part No. 50069174P

# PART'S MANUAL



An Operator's Manual was shipped with the equipment in the Manual Canister. This Operator's Manual is an integral part of the safe operation of this machine and must be maintained with the unit at all times. **READ, UNDERSTAND, and FOLLOW** the Safety and Operation Instructions contained in this manual before operating the equipment. If the Operator's Manual is not with the equipment, contact your dealer or Servis-Rhino (800-446-5158) to obtain a Free copy before operating the equipment.

FC-R-0112



### **RHINO®**

1020 S. Sangamon Ave.  
Gibson City, IL 60936  
800-446-5158

Email: [parts@servis-rhino.com](mailto:parts@servis-rhino.com)



© 2016 Alamo Group Inc.

# To the Owner/Operator/Dealer

All implements with moving parts are potentially hazardous. There is no substitute for a cautious, safe-minded operator who recognizes the potential hazards and follows reasonable safety practices. The manufacturer has designed this implement to be used with all its safety equipment properly attached to minimize the chance of accidents.

**BEFORE YOU START!** Read the safety messages on the implement and shown in your manual. Observe the rules of safety and common sense!



# DANGER

**FAILING TO FOLLOW SAFETY MESSAGES AND OPERATING INSTRUCTION CAN CAUSE SERIOUS BODILY INJURY OR EVEN DEATH TO OPERATOR AND OTHERS IN THE AREA.**

1.



2. NO RIDERS. NO CHILDREN OPERATORS



3. USE SAFETY SHOES, HARD HAT, SAFETY GLASSES, SEAT BELTS, ROPS & OPS.



4. BLOCK UP SECURELY BEFORE WORKING UNDER.



1. Study and understand Operator's Manuals, Safety Decals, and Instructional Decals for tractor and implement to prevent misuse, abuse, and accidents. Practice before operating in a confined area or near passersby.

- Learn how to stop engine suddenly in an emergency. Be alert for passersby and especially children.

2. Allow no children on or near folding mower or tractor. Allow no riders on tractor or implement. Falling off may cause serious injury or death from being run over by tractor or mower or contact with rotating blades.

3. Operate only with tractor having Roll-Over Protective Structure (ROPS) and with seat belt securely fastened to prevent injury and possible death from falling off or tractor overturn.

- Personal Protective Equipment such as Hard Hat, Safety Glasses, Safety Shoes, & Ear Plugs are recommended.

4. Block up or support raised machine and all lifted components securely before putting hands or feet under or working underneath any lifted component to prevent crushing injury or death from sudden dropping or inadvertent operation of controls. Make certain area is clear before lowering or folding.

5. Before transporting, put Lift Lever in detent or full-lift position. Install Transport Safety Devices securely on folding mowers. Put Booms securely in Transport Rest.

- Folding and Boom Mowers have raised center of gravity. Slow down when turning and on hillsides.

6. Make certain that SMV sign, warning lights, and reflectors are clearly visible. Follow local traffic codes.

7. Never operate with Cutting Head or Folding Section raised if passersby, bystanders, or traffic are in the area to reduce possibility of injury or death from objects thrown by Blades under Guards or mower structure.

8. Before dismounting, secure implement in transport position or lower to ground.

- Put tractor in park position or set brake, disengage PTO, stop engine, remove key, and wait until noise of rotation has ceased to prevent crushing by entanglement in rotating parts which could cause injury or death.
- Never mount or dismount a moving vehicle. Crushing from runover may cause serious injury or death.

5. TRANSPORT SAFELY, LOCK UP.



6. USE SMV, LIGHTS, & REFLECTORS.



7. DO NOT OPERATE WITH CUTTER OR WING RAISED



8. DO NOT MOUNT OR DISMOUNT WHILE MOVING.



02967827

## WARRANTY INFORMATION:

Read and understand the complete Warranty Statement found in this Manual. Fill out the Warranty Registration Form in full and return it to within 30 Days. Make certain the Serial Number of the Machine is recorded on the Warranty Card and on the Warranty Form that you retain

# **PARTS SECTION**

# PARTS ORDERING GUIDE

The following instructions are offered to help eliminate needless delay and error in processing purchase orders for the equipment in this section.

1. The Parts Section is prepared in logical sequence and grouping of parts that belong to the basic machine featured in this manual. Part Numbers and Descriptions are given to help locate the parts and quantities required.
2. The Purchase Order must include the name and address of the person or organization ordering the parts, who should be charged, and if possible, the serial number of the machine for which the parts are ordered.
3. The Purchase Order must clearly list the quantity of each part, the complete and correct part number (be sure to include all periods), and the basic name of the part.
4. The Manufacturer reserves the right to substitute parts where applicable.
5. Some parts are unlisted items which are special production items not normally stocked and are subject to special handling. Request a quotation for such parts before sending a Purchase Order.
6. The Manufacturer reserves the right to change prices without prior notice.

**NOTE:** Please refer to The Safety Section in the front of this Manual for the proper Part Number when ordering Replacement Safety Decals.



For maximum safety and to guarantee optimum product reliability, always use genuine Servis-Rhino Parts. The use of inferior replacement parts may cause premature or catastrophic failure which could result in serious injury or death. Direct any questions regarding parts to:



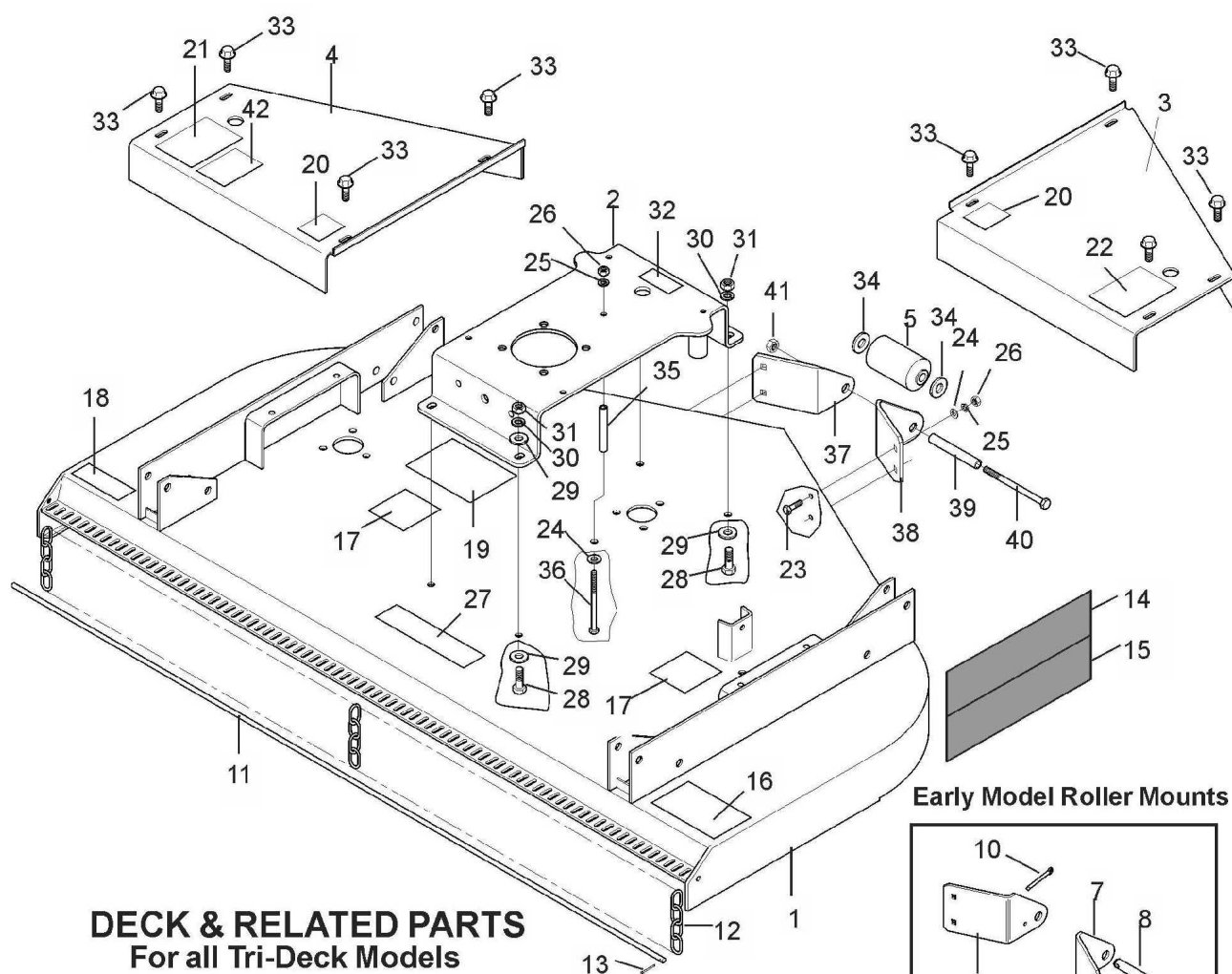
**RHINO®**  
1020 S. Sangamon Ave.  
Gibson City, IL 60936  
800-446-5158  
Email: [parts@servis-rhino.com](mailto:parts@servis-rhino.com)

# TRI-DECK

## TX1500 & TX1700

### ALPHABETICAL INDEX

CONTENTS	PAGE
Axle Arm Assemblies .....	52-4-1
Deck & Related Parts .....	52-1-1
Driveshaft, CV Input .....	52-6-1
Driveshaft, Rear & Wings .....	52-6-3
Gearbox Assy. (Center Divider) .....	52-2-4
Gearbox Assy. (Rear & Wings) .....	52-2-3
Hydraulic Cylinders .....	52-5-5
Hydraulic, Plumbing & Parts .....	52-5-1
Jackstand .....	52-1-5
Mainframe (Front Section) .....	52-1-2, 52-1-3
Mainframe (Rear Section) .....	52-1-4
Pulleys & Belts .....	52-2-1
Rope Assembly .....	52-1-5
Safety Tow Chain .....	52-1-5
Shielding (Center Gearbox) .....	52-3-1
Shielding (Wing Gearboxes) .....	52-3-2
Spindle Assy. ....	52-2-2
Transport Axle, Wheel, Tire .....	52-4-2

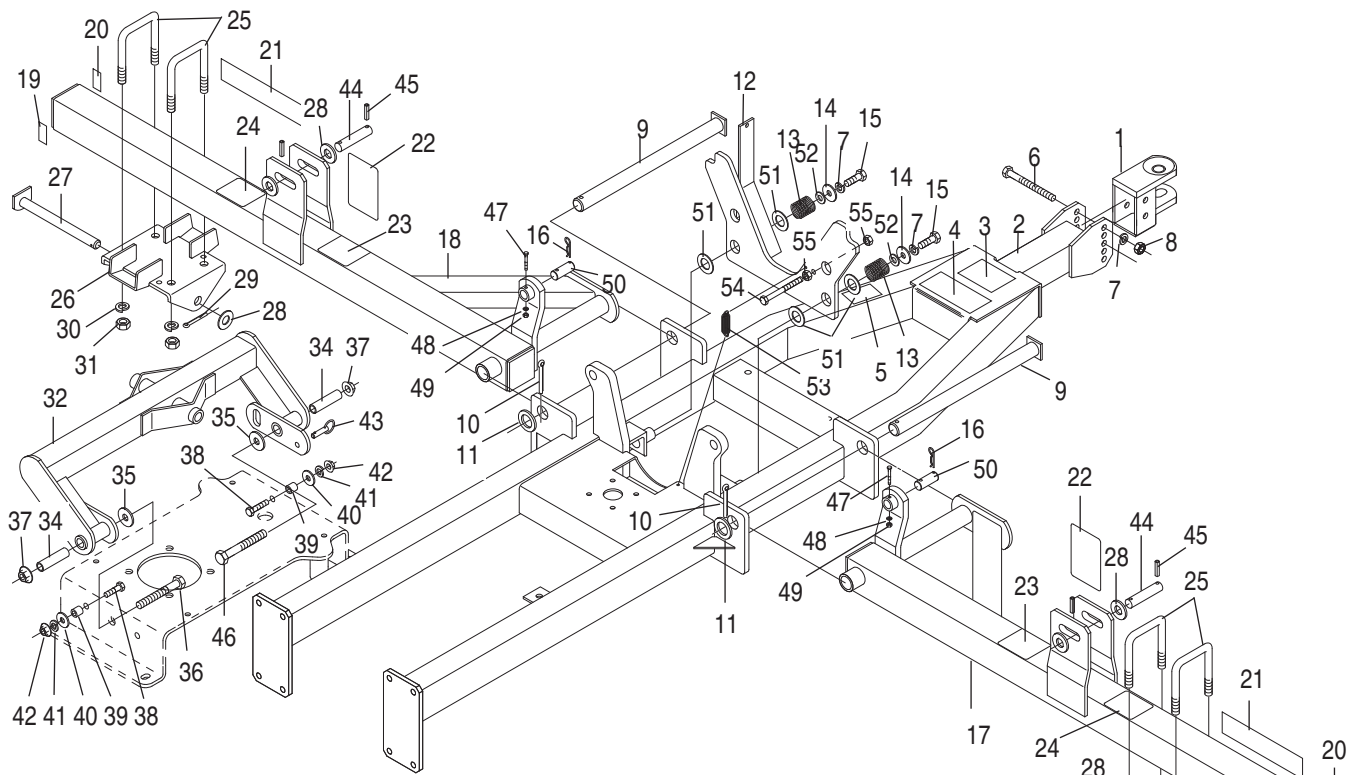


### DECK & RELATED PARTS

For all Tri-Deck Models  
TX1500 & TX1700

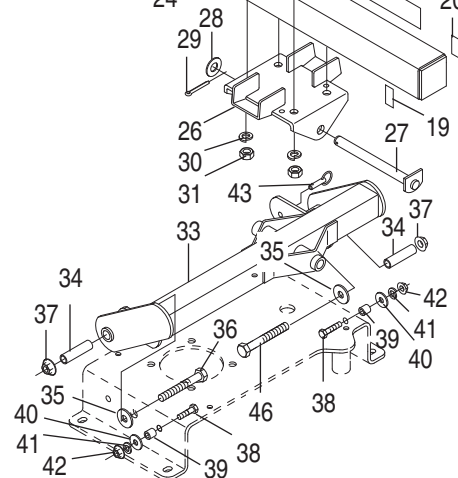
REF. NO.	PART NO.	QTY.	DESCRIPTION
1	94383-35	1	Deck Weldment 5' w/Decals
	94384-35	1	Deck Weldment 6' w/Decals
2	—	1	Gearbox Mount w/Decals for 5' Deck
	—	1	Gearbox Mount w/Decals for 6' Deck
3	50069213	1	R.H. Shield w/Decals, 5' Deck
	50069214	1	R.H. Shield w/Decals, 6' Deck
4	50069215	1	L.H. Shield w/Decals, 5' Deck
	50069216	1	L.H. Shield w/Decals, 6' Deck
5	79057	1	Front Roller
6	90865	1	Left Roller Mount (Early Models)
7	90864	1	Right Roller Mount (Early Models)
8	83055	1	Roller Shaft
9	83054	1	Retainer
10	19443	1	Roll Pin 3/16" x 2"
11	94227	1	Chain Rod for 5' Deck
	94228	1	Chain Rod for 6' Deck
12	94226	71	Chain 5' Deck
	94226	84	Chain 6' Deck
13	—	1	Cotter Pin 3/32" x 1"
14	94832	1	Model Decal TX1700
15	94831	1	Model Decal TX1500
16	50042282	1	Danger Decal
17	50012616	2	Danger Decal
18	83056	1	Warning Decal
19	88655	1	Belt Installation Decal

REF. NO.	PART NO.	QTY.	DESCRIPTION
20	50012615	2	Warning Decal
21	50042284	1	Warning Decal
22	50042283	1	Warning Decal
23	20034	4	Capscrew 3/8" x 1-1/4" Gr. 5
24	—	5	Flatwasher 3/8"
25	—	5	Lockwasher 3/8"
26	—	5	Hex Nut 3/8"
27	12115	1	Bush Hog Decal
28	—	4	Capscrew 1/2" x 1-1/2" Gr. 5
29	—	6	Flatwasher 1/2"
30	—	4	Lockwasher 1/2"
31	—	4	Hex Nut 1/2"
32	60873	1	Decal 540 RPM
33	86873	8	Capscrew, Flanged 3/8" x 3/4"
34	15921	2	Flatwasher 3/4"
35	97613	1	Spacer (TX1700 Only)
36	20680	1	Capscrew 3/8" x 5-1/2" Gr.5
37	50021169	1	Left Roller Mount (Current)
38	50021168	1	Right Roller Mount (Current)
39	50021170	1	Sleeve
40	20580	1	Capscrew 1/2" x 6-1/2"
41	15554	1	Locknut 1/2"
42	50042285	1	Warning Decal



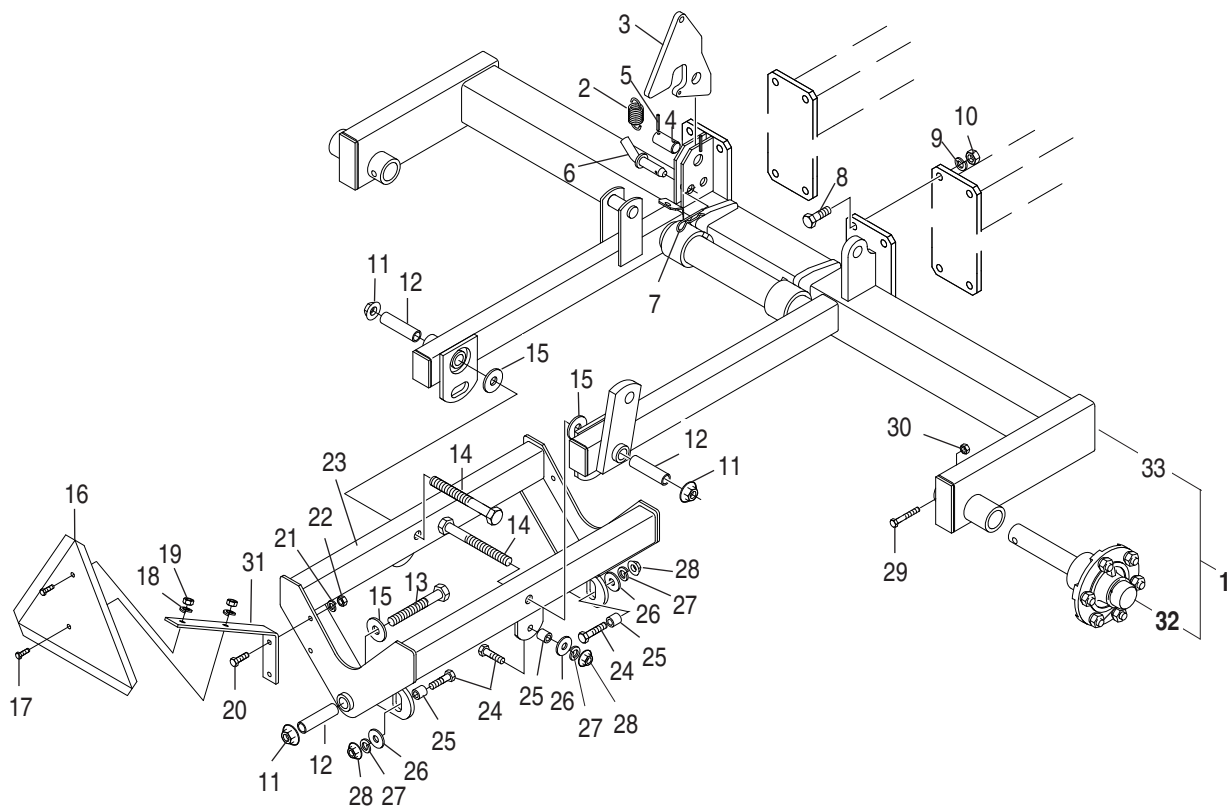
## MAINFRAME FRONT SECTION

REF. NO.	PART NO.	QTY.	DESCRIPTION
1	94246	1	Hitch Weld.
2	94371	1	Frame w/Decals
3	87317	1	Decal, Warning
4	87340	1	Decal, Warning
5	50042281	1	Decal, Warning
6	20415	1	Capscrew 5/8" x 5-1/2" Gr. 5
7	—	3	Lockwasher 5/8"
8	—	1	Hex Nut 5/8"
9	94291	2	Hinge Pin
10	—	2	Cotter Pin 1/4" x 2-1/2"
11	15924	2	Flatwasher 1-1/2"
12	50029458	1	Lock Plate Weldment
13	94357	2	Spring
14	—	2	Flatwasher 5/8"
15	—	2	Capscrew 5/8" x 1" Gr. 5
16	1273	2	Presto Pin
17	99979	1	Wing Assy. R.H. W/Decals
18	99980	1	Wing Assy. L.H. W/Decals
19	53316	2	Reflector, Red
20	53315	2	Amber Reflector
21	12115	2	Bush Hog Decal
22	50042283	2	Warning Decal
23	50042289	2	Warning Decal
24	83343	2	Warning Decal
25	94337	4	U-Bolt 3/4"
26	50024743	2	Mounting Bracket
27	94284	2	Pin Weldment
28	20376	6	Flatwasher 1"
29	—	2	Cotter Pin 3/16" x 1-1/2"
30	—	4	Lockwasher 3/4"
31	—	4	Hex Nut 3/4"
32	50024745	1	L.H. Mower Mount 60" Deck
33	50024747	1	L.H. Mower Mount 72" Deck
33	50024744	1	R.H. Mower Mount 60" Deck
34	50024746	1	R.H. Mower Mount 72" Deck
34	94283	4	Bushing



REF. NO.	PART NO.	QTY.	DESCRIPTION
35	15920	8	Flatwasher 3/4"
36	19037	2	Capscrew 3/4" x 5 1/2"
37	20299	6	Locknut 3/4" Flanged
38	—	4	Capscrew 1/2" x 2" Gr. 5
39	94281	4	Bushing
40	—	4	Flatwasher 1/2"
41	—	4	Lockwasher 1/2"
42	—	4	Hex Nut 1/2"
43	94374	2	Transport Pin
44	87293	2	Cylinder Pin
45	20325	2	Roll Pin 1/4" x 1-3/4"
46	98761	2	Special Bolt 5 1/2"
47	1160820	2	Capscrew 1/4" x 2"
48	—	2	Lockwasher 1/4"
49	—	2	Locknut 1/4"
50	50029464	2	Pin
51	—	4	Flatwasher 1-1/4"
52	—	2	Flatwasher 5/8" SAE
53	94375	1	Spring
54	—	1	Capscrew 1/2" x 5"
55	—	2	Hex Nut 1/2"





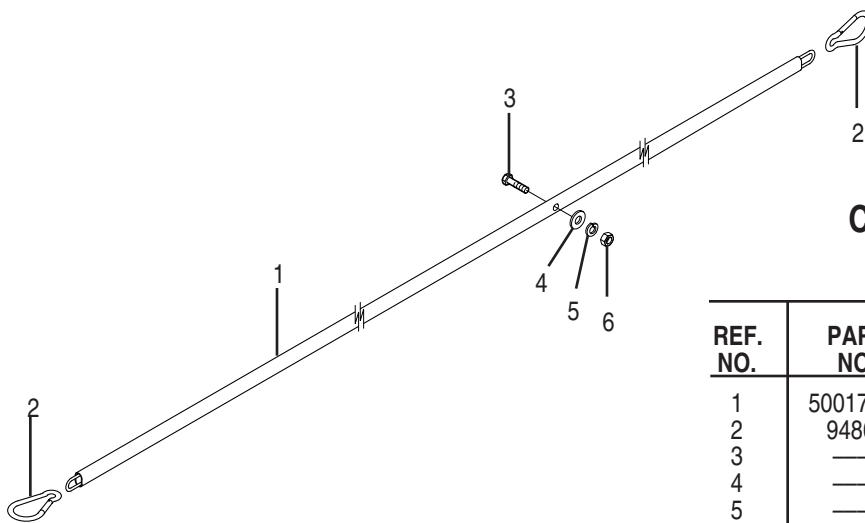
## REAR FRAME AND AXLE

For all Tri-Deck Models

REF. NO.	PART NO.	QTY.	DESCRIPTION
1	96079	1	Rear Axle Assy. (Items 29-32)
2	97301	1	Spring, Extension
3	50034301	1	Rear Latch Plate
4	94331	1	Pin
5	15466	2	Roll Pin 3/16" x 1-1/2"
6	84672	1	Wing Lock Pin
7	1273	1	Presto Pin
8	—	8	Capscrew 5/8" x 1-3/4" Gr. 5
9	—	8	Lockwasher 5/8"
10	—	8	Hex Nut 5/8"
11	20299	4	Locknut 3/4", Flanged
12	94283	4	Bushing
13	19037	1	Capscrew 3/4" x 5-1/2" Gr. 5 (Rear)
	98761	1	Capscrew 3/4" x 5-1/2" Special (Rear)
14	44090	2	Capscrew 3/4" x 7" Gr. 5
15	15920	4	Flatwasher 3/4"
16	94359	1	SMV Placard
17	—	2	Capscrew 1/4" x 3/4"

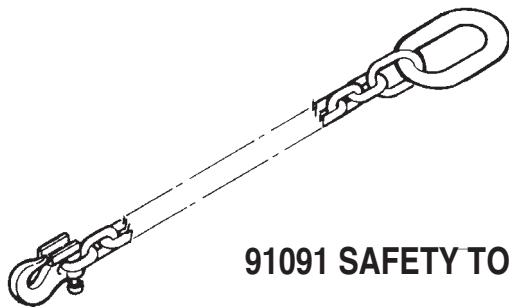
REF. NO.	PART NO.	QTY.	DESCRIPTION
18	—	2	Lockwasher 1/4"
19	—	2	Hex Nut 1/4"
20	—	2	Capscrew 3/8" x 1" Gr. 5
21	—	2	Lockwasher 3/8"
22	—	2	Hex Nut 3/8"
23	94297	1	Cradle Weld.
24	—	4	Capscrew 1/2" x 2" Gr. 5
25	94281	4	Bushing
26	—	4	Flatwasher 1/2"
27	—	4	Lockwasher 1/2"
28	—	4	Hex Nut 1/2"
29	—	2	Capscrew 1/2" x 3" Gr. 5
30	15554	2	Locknut 1/2"
31	94360	1	SMV Bracket
32	94353	2	Spindle & Hub Assy. (See Page 52-4-2)
33	94343	1	Rear Axle Weldment



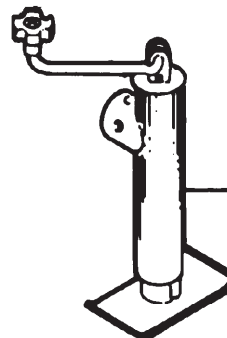


### CHAIN ASSEMBLY For Deck Stop

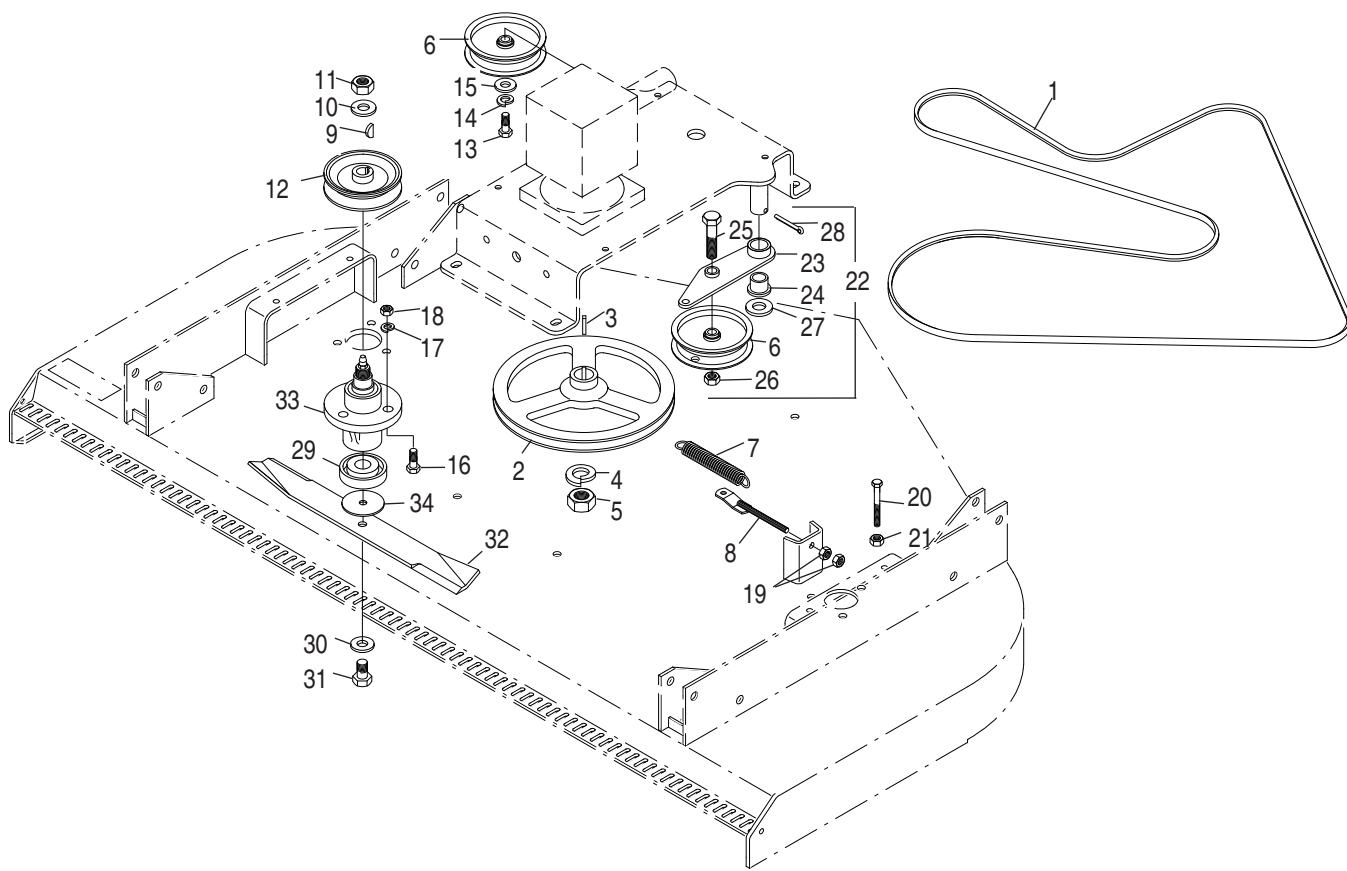
REF. NO.	PART NO.	QTY.	DESCRIPTION
1	50017303	1	Chain w/ Sleeve
2	94862	2	Spring Snap
3	—	1	3/8" x 1-1/4" Capscrew
4	—	1	3/8" Flatwasher
5	—	1	3/8" Lockwasher
6	—	1	3/8" Hex Nut



**91091 SAFETY TOW CHAIN**



**24D25128  
JACKSTAND ASSEMBLY**

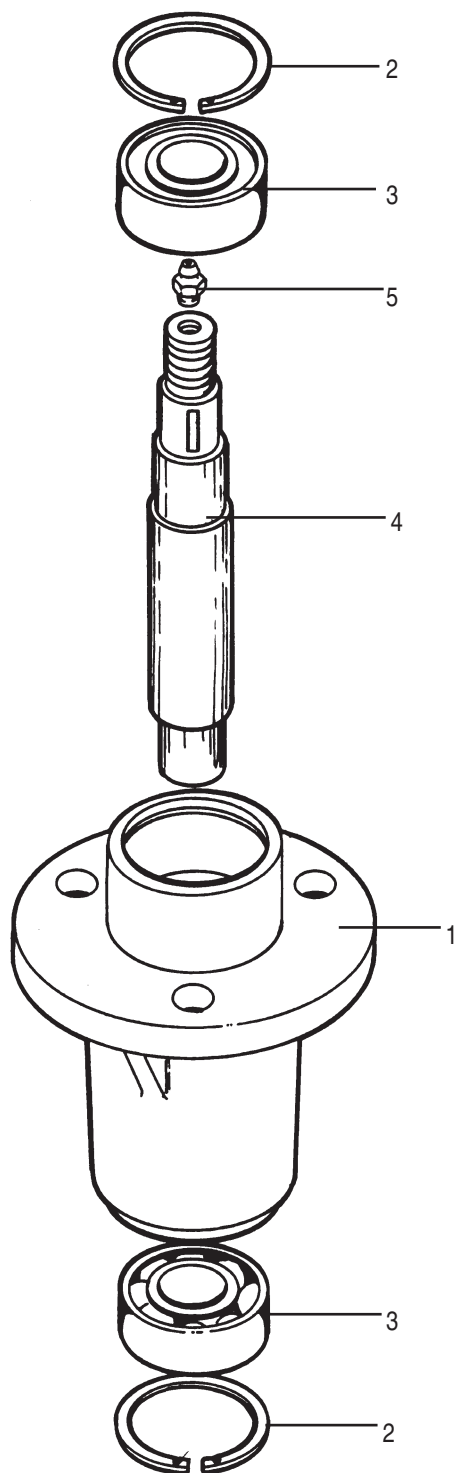


## PULLEYS AND BELTS

### Tri-Deck Models TX1500 & TX1700

REF. NO.	PART NO.	QTY.	DESCRIPTION
1	88667	1	Drive Belt for 5' Deck
	88843	1	Drive Belt for 6' Deck
2	88666	1	Drive Sheave for 5' Deck
	88741	1	Drive Sheave for 6' Deck
3	70228	1	Key 6 x 6 x 30mm
4	70286	1	Spring Washer
5	70287	1	Hex Nut M30 x 2
6	88663	2	Idler Pulley
7	50008038	1	Tension Spring
8	88669	1	Rod Weldment
9	88753	3	Woodruff Key #606
10	—	3	Flatwasher 5/8" SAE
11	9162000	3	Locknut 5/8"
12	88756	3	Sheave 5-1/2"
13	—	1	Capscrew 5/8" x 2" Gr. 5
14	—	1	Lockwasher 5/8"
15	6050133	1	Special Washer
16	—	9	Capscrew 1/2" x 1-1/2" Gr. 5
17	—	9	Lockwasher 1/2"

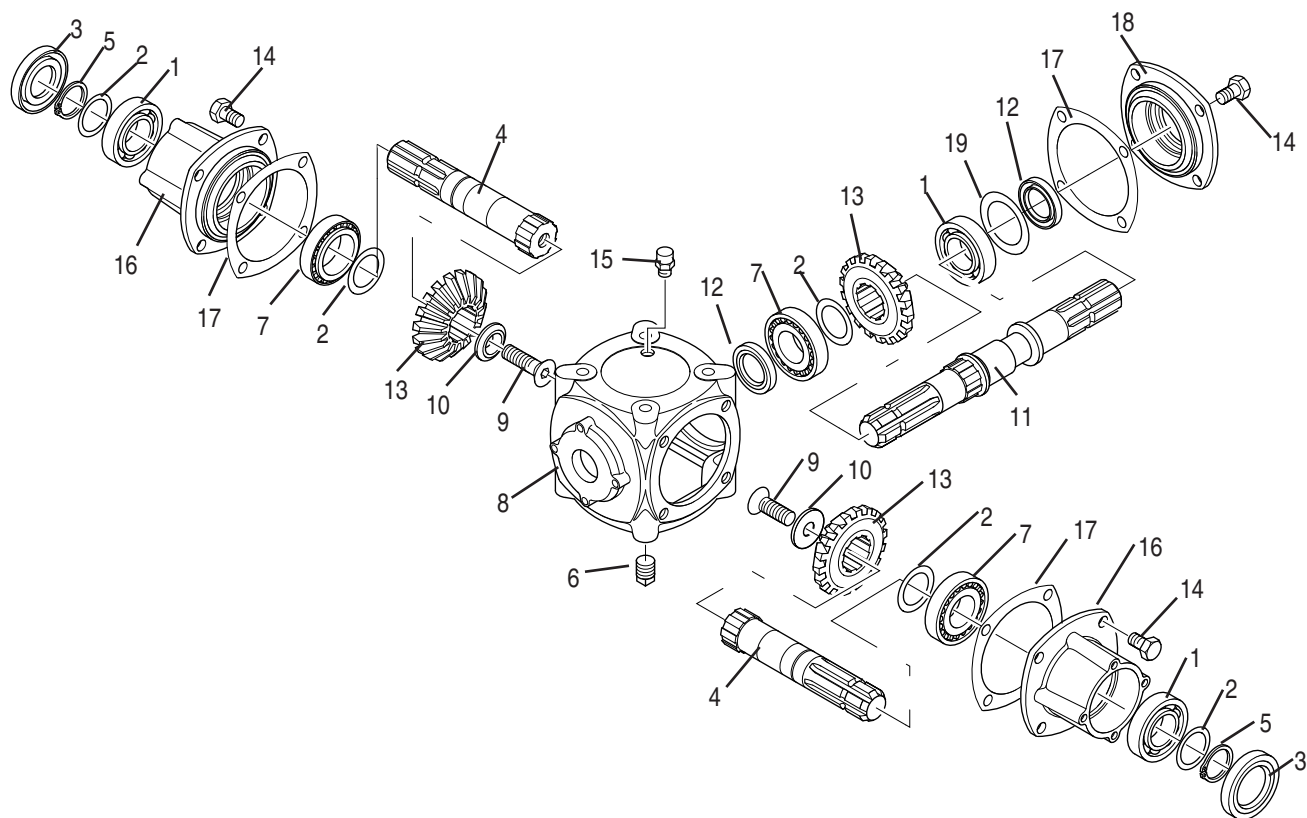
REF. NO.	PART NO.	QTY.	DESCRIPTION
18	—	9	Hex Nut 1/2"
19	—	2	Hex Nut 3/8"
20	—	2	Capscrew 1/2" x 2-1/4" Gr. 5 (5' Only)
21	15519	2	Jam Nut 1/2"
22	88671	1	Idler Arm Assy.
23	88703	1	Idler Arm Weld.
24	88691	1	Bushing
25	—	1	Capscrew 5/8" x 3" Gr. 5
26	15598	1	Locknut 5/8"
27	20376	1	Flatwasher 1"
28	—	1	Cotter Pin 3/16" x 1-1/2"
29	88754	1	Blade Washer
30	44040BH	3	Safety Washer
31	44506BH	3	Blade Bolt 1/2" x 1-3/4" UNF Gr. 8
32	95754	3	Blade for 5' Deck, 21"
	50029159	3	Mulching Blade, 21"
	95755	3	Blade for 6' Deck, 25"
	50029160	3	Mulching Blade, 25"
33	50051388	3	Spindle Assy.
34	97658	A/R	Blade Spacer



## 50051388 SPINDLE ASSEMBLY

Models: TX1500, TX1700

REF. NO.	PART NO.	QTY.	DESCRIPTION
1	88751	1	Spindle Housing
2	97685	2	Retaining Ring
3	88749	2	Bearing 25mm
4	50051387	1	Shaft
5	449BH	1	Grease Fitting



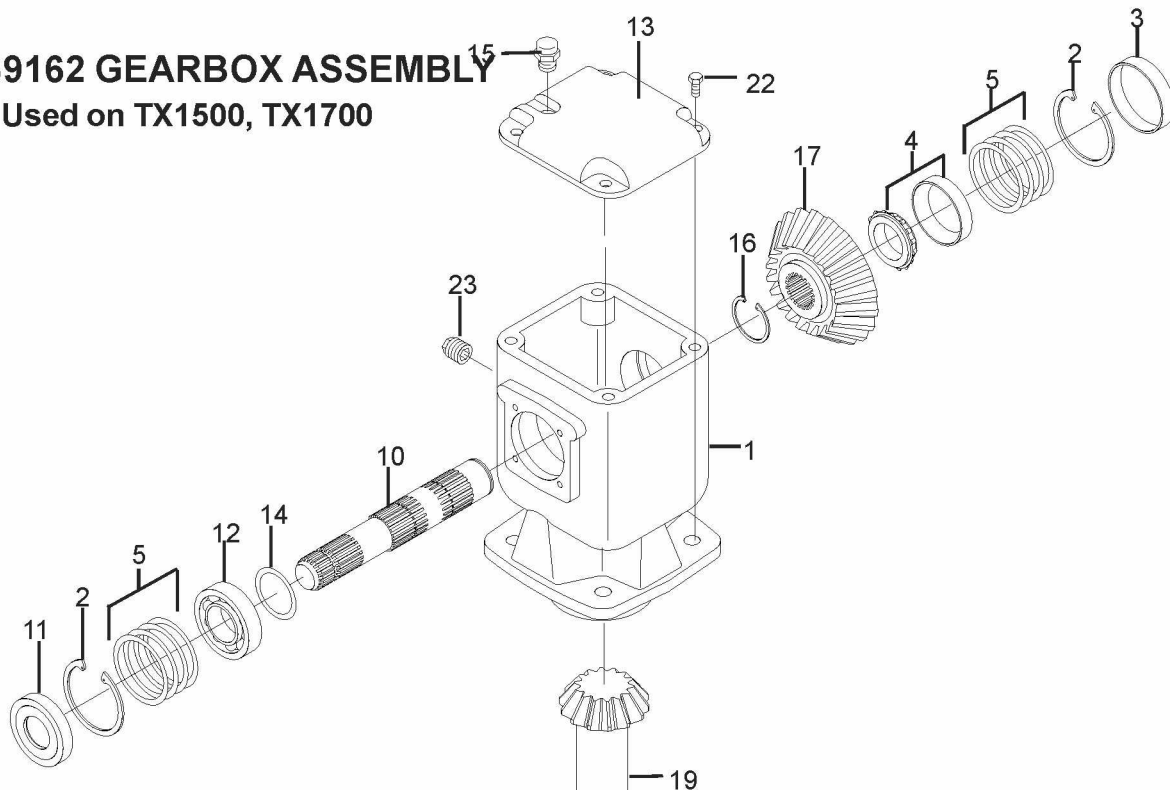
### 70833 DIVIDER GEARBOX ASSEMBLY

For Tri-Deck Models TX1500 & TX1700

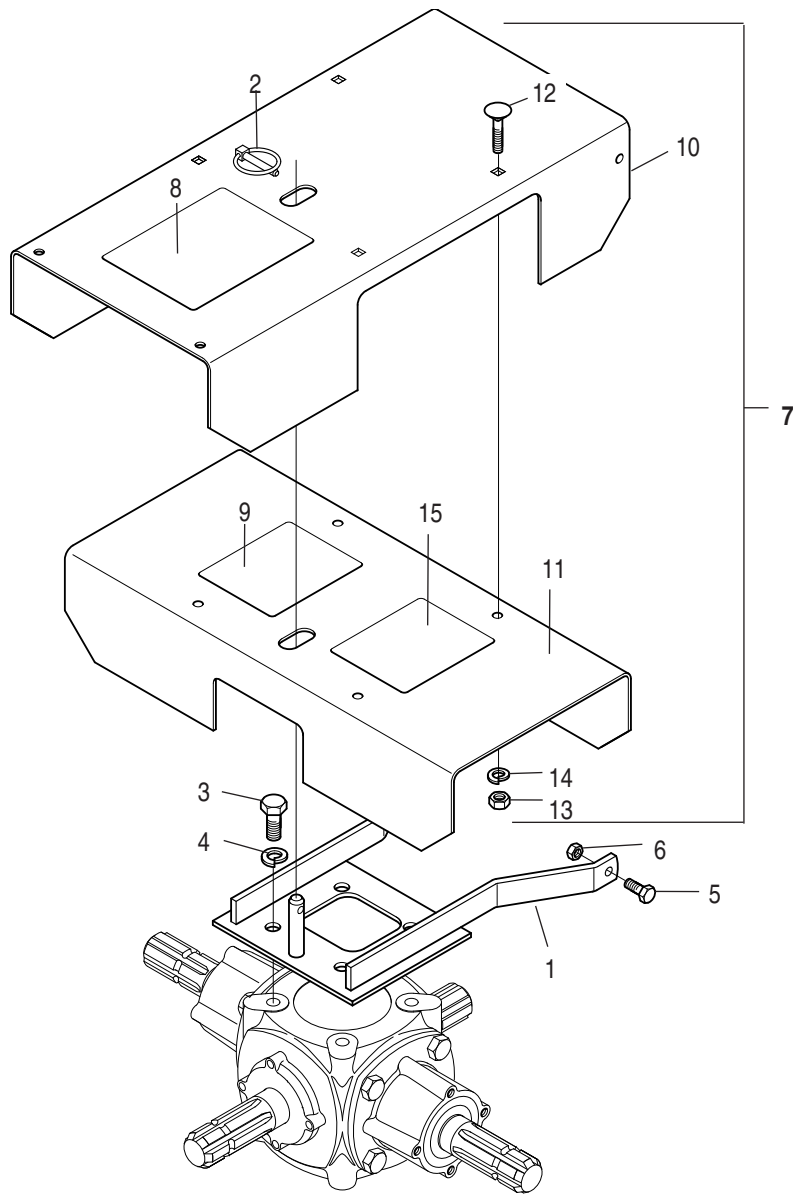
REF. NO.	PART NO.	QTY.	DESCRIPTION
1	70229	3	Bearing
2	F7502875	5	Shim
3	70134	2	Oil Seal 35x 72 x 10
4	70921	2	Shaft
5	70110	2	Snap Ring
6	70292	1	Plug
7	70797	3	Taper Bearing Set
8	70922	1	Casing
9	70923	2	Screw, Hex Socket m12 x 40
10	70446	2	Blank Washer
11	70924	1	Shaft
12	70698	2	Oil Seal
13	70249	3	Gear 18 Tooth
14	70113	12	Capscrew m12 x 25
15	80538	1	Plug, Breather
16	70132	2	Extension Housing
17	70261	3	Gasket
18	F7502730	1	Cover
19	F7502867	1	Shim

# 50069162 GEARBOX ASSEMBLY

Used on TX1500, TX1700



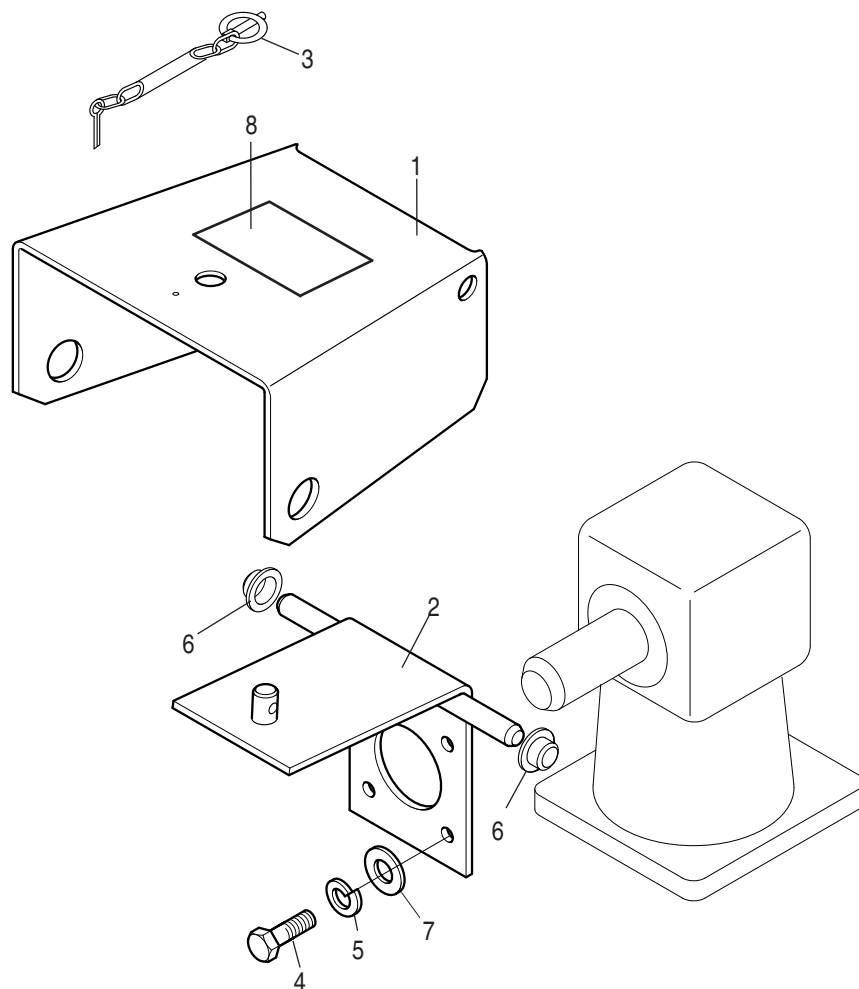
REF. NO.	PART NO.	QTY.	DESCRIPTION
1	50069162	1	Casting
2	70133	2	Snap Ring 72 x 75 x 2.5
3	70279	1	Oil Cap
4	71388	1	Ball Bearing 30207
5	70639	2	Shim 60.3 x 71.7 x .03
	70640	2	Shim 60.3 x 71.7 x .04
	70641	2	Shim 60.3 x 71.7 x .05
	70642	2	Shim 60.3 x 71.7 x 1.0
6	70348	1	Shim 45.3 x 65.3 x .03
	70349	1	Shim 45.3 x 65.3 x .04
	70350	1	Shim 45.3 x 65.3 x .05
	70351	1	Shim 45.3 x 65.3 x 1.0
7	70796	2	Roller Bearing 30209
8	70905	1	Nut M45
9	70848	1	Dust Lip 40 x 90 x 8
10	50042822	1	Input Shaft 1-3/8" Z6
11	70134	1	Oil Seal 35 x 72 x 10
12	71453	1	Ball Bearing 6207
13	50042823	1	Cover
14	F750281	1	Shim 35.3 x 48 x 2.5
15	80538	1	1/2" GAS Solid Plug
16	70250	1	Snap Ring 40 x 37.5 x 2.5
17	50042824	1	Crown Z30
18	70288	1	Parallel Key 6 x 6 x 30
19	50042826	1	Pinion Z12
20	70286	1	Ext. Tooth Washer 31 x 48
21	70287	1	Hex Nut M30
22	70278	4	Bolt M8 x 1.25 x 20
23	70292	1	3/8" GAS Solid Plug



### SHIELDING, CENTER TRANSFER BOX

For TDM 15 & TDM 17 Tri Deck

REF. NO.	PART NO.	QTY.	DESCRIPTION
1	94293	1	Hinge Weldment
2	69391	1	Lynch Pin
3	44394BH	4	Capscrew M12 x 1.75 x 30 Gr. 8.8
4	44200	4	Lockwasher M12
5	—	2	Capscrew 5/16" x 3/4" Gr. 5
6	15602	2	Locknut 5/16"
7	<b>94356</b>	<b>1</b>	<b>Shield Assy.</b>
8	50042286	1	Warning Decal
9	50042284	1	Warning Decal
10	N/A	1	Upper Shield
11	N/A	1	Lower Shield
12	5161012	4	Carriage Bolt 5/16" x 1-1/4" Gr. 5
13	—	4	Hex Nut 5/16"
14	—	4	Lockwasher 5/16"
15	50042285	1	Warning Decal



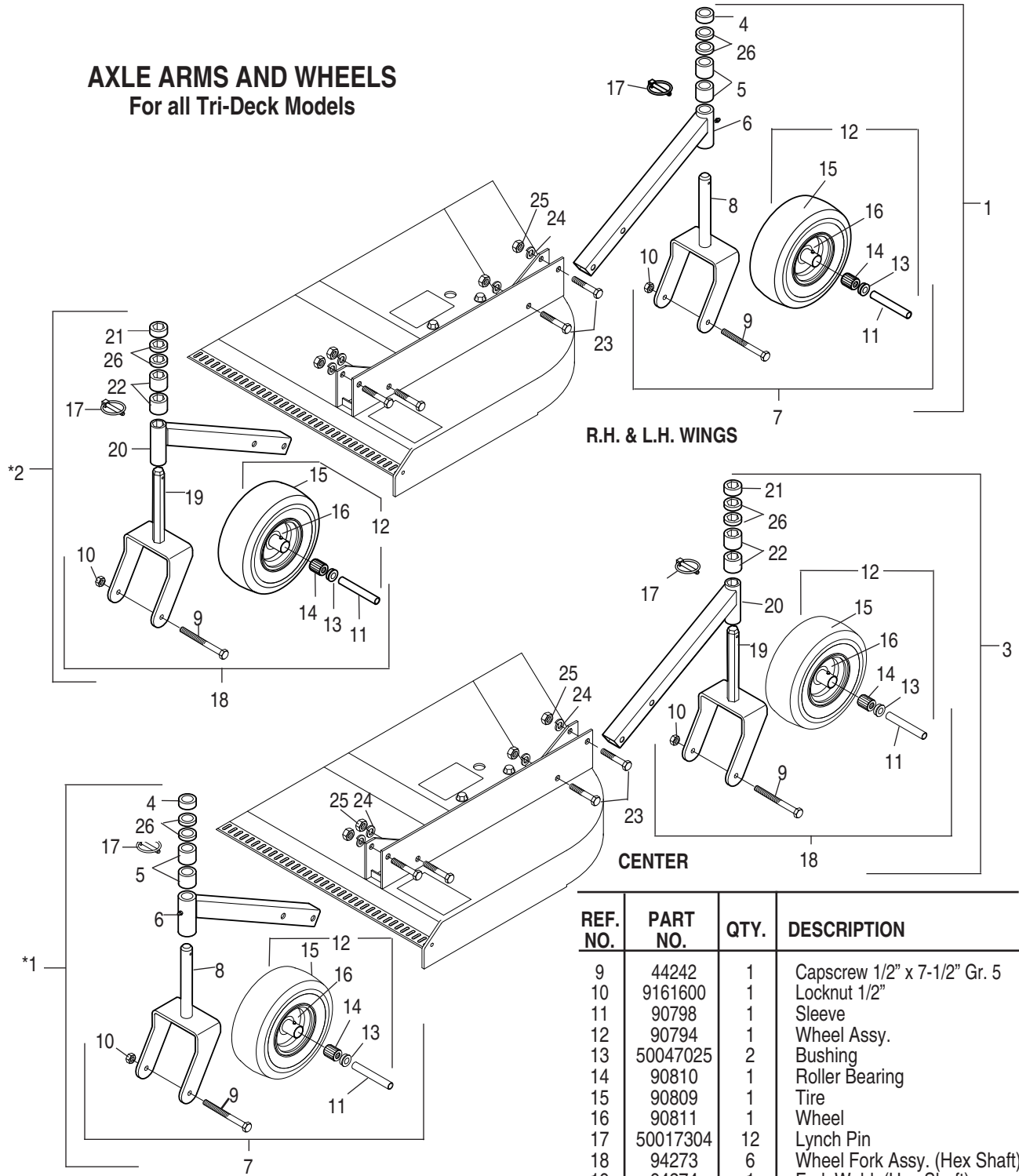
## GEARBOX SHIELDING

Models: TX1500 & TX1700

REF. NO.	PART NO.	QTY.	DESCRIPTION
1	94306	1	Shield
2	94305	1	Mount Weld.
3	6050096	1	Pin & Chain Assy.
4	44215	4	Capscrew M8 x 1.25 x 15
5	44311	4	Lockwasher M8
6	50014067	2	Cap
7	44216	4	Flatwasher M8
8	50012615	1	Warning Decal



## AXLE ARMS AND WHEELS For all Tri-Deck Models



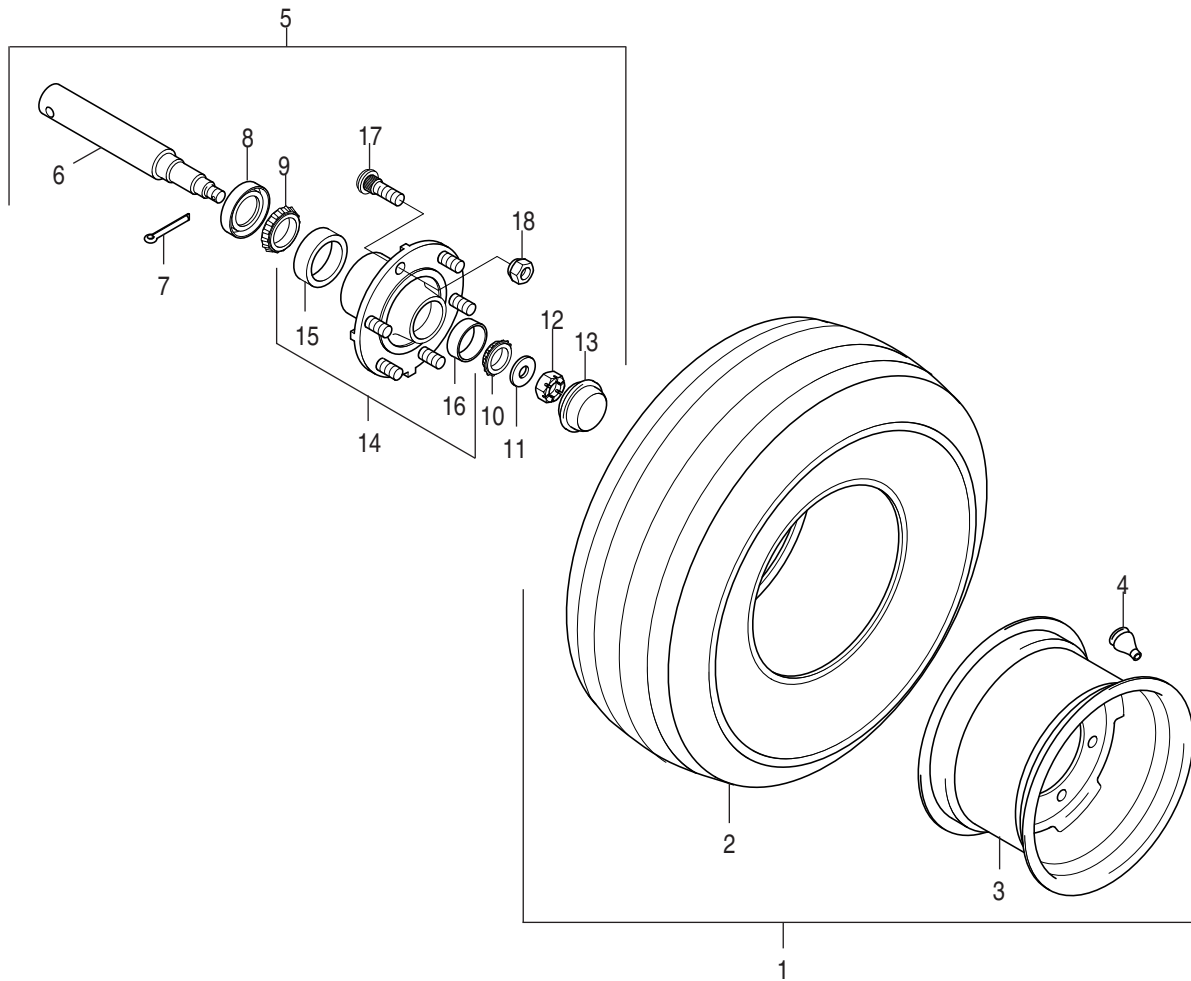
REF. NO.	PART NO.	QTY.	DESCRIPTION
1	94355	8	Axle Arm Assy. R.H. & L.H. Front, Center Rear
2	94363	2	Axle Arm Assy. R.H. & L.H. Rear
3	94354	2	Axle Arm Assy. Center Front
4	99291	4	Spacer 1/2"
5	99290	8	Spacer 1"
6	94265	4	Caster Arm Weld.
7	94501	6	Wheel & Fork Assy. (Round Shaft)
8	94503	1	Fork Weld. (Round Shaft)
	50021540	1	Fork Weld. (Round Shaft, Long)

REF. NO.	PART NO.	QTY.	DESCRIPTION
9	44242	1	Capscrew 1/2" x 7-1/2" Gr. 5
10	9161600	1	Locknut 1/2"
11	90798	1	Sleeve
12	90794	1	Wheel Assy.
13	50047025	2	Bushing
14	90810	1	Roller Bearing
15	90809	1	Tire
16	90811	1	Wheel
17	50017304	12	Lynch Pin
18	94273	6	Wheel Fork Assy. (Hex Shaft)
19	94274	1	Fork Weld. (Hex Shaft)
	50021538	1	Fork Weld. (Hex Shaft, Long)
20	94271	1	Arm Weld. for Hex Shaft
21	99291	6	Spacer 1/2"
22	99290	1	Spacer 1"
23	—	24	Capscrew 5/8" x 3-1/2"
24	—	24	Lockwasher 5/8"
25	—	24	Hex Nut 5/8"
26	99292	12	Spacer 1/4"

### \*Note:

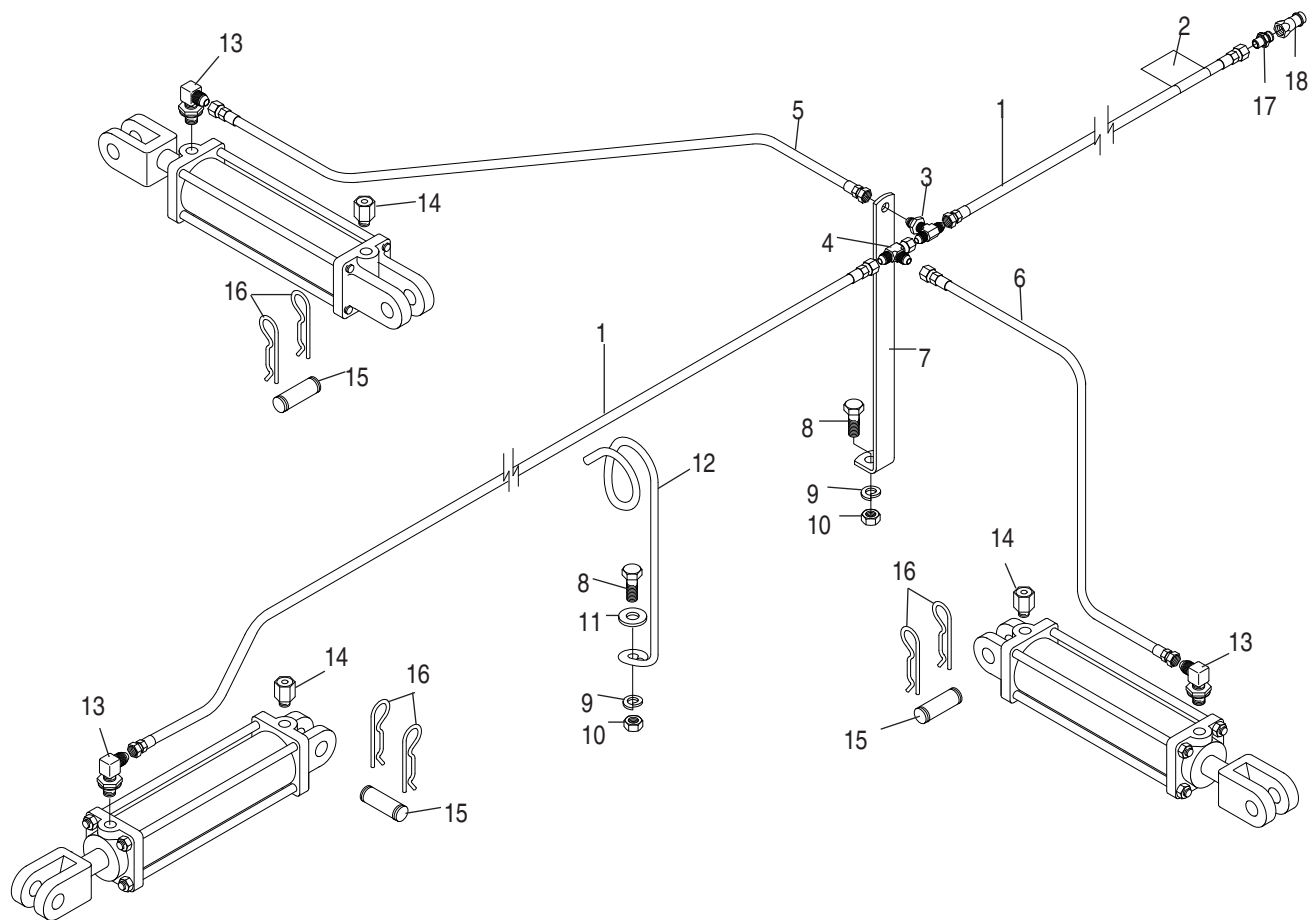
Item 1 is used on front of wings and on outside rear of wings.

Item 2 is used on inside of wings and on front of center units.



## TRANSPORT WHEEL, TIRE & SPINDLE

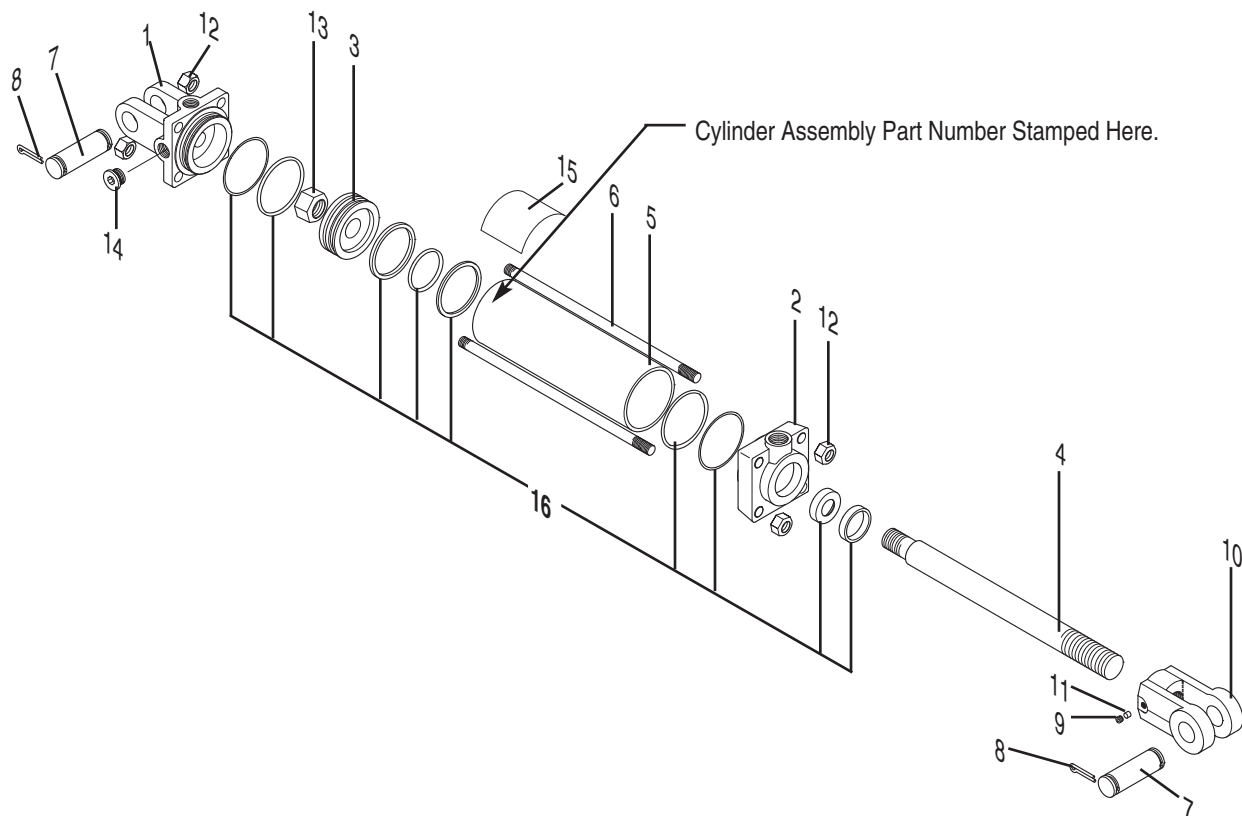
REF. NO.	PART NO.	QTY.	DESCRIPTION
1	50024407	2	Tire & Wheel Assy.
2	50024406	1	Tire
3	94378	1	Wheel
4	50001181	1	Valve Stem
5	50021320	2	Spindle & Hub Assy.
6	50021317	1	Spindle
7	15675	1	Cotter Pin, 5/32" x 1-1/2"
8	50021318	1	Rear Seal
9	50000115	1	Bearing Cone (Inner)
10	50076	1	Bearing Cone (Outer)
11	20571	1	Flatwasher 7/8"
12	20429	1	Castle Nut 7/8"
13	3750021	1	Hub Cap
14	50021319	1	Hub w/ Cups & Bolts
15	50000113	1	Inner Bearing Cup
16	14-6-197	1	Outer Bearing Cup
17	20775	6	Lug Bolt 1/2" x 1-7/8"
18	15515	6	Lug Nut 1/2" x 20 UNF



## PLUMBING AND COMPONENTS

### For All Tri-Deck Models

REF. NO.	PART NO.	QTY.	DESCRIPTION
1	53329	2	Hyd. Hose 72"
2	94878	1	Safety Tag
3	50012607	1	Bulkhead Tee
4	6050072	1	Swivel Nut Tee
5	53330	1	Hyd. Hose 42"
6	25H41146	1	Hyd. Hose 31"
7	94347	1	Hose Holder
8	—	2	Capscrew 5/8" x 2" Gr. 5
9	—	2	Lockwasher 5/8"
10	—	2	Hex Nut 5/8"
11	—	1	Flatwasher 5/8"
12	12031	1	Hose Holder
13	14-40-98	3	Elbow 90° ORB
14	50047240	3	Breather Plug
15	64923	2	Clevis Pin
16	63633	4	Hair Pin
17	24-6-434	1	Straight Adapter
18	25H43870	1	Coupler



### 99564 HYDRAULIC CYLINDER (WING)

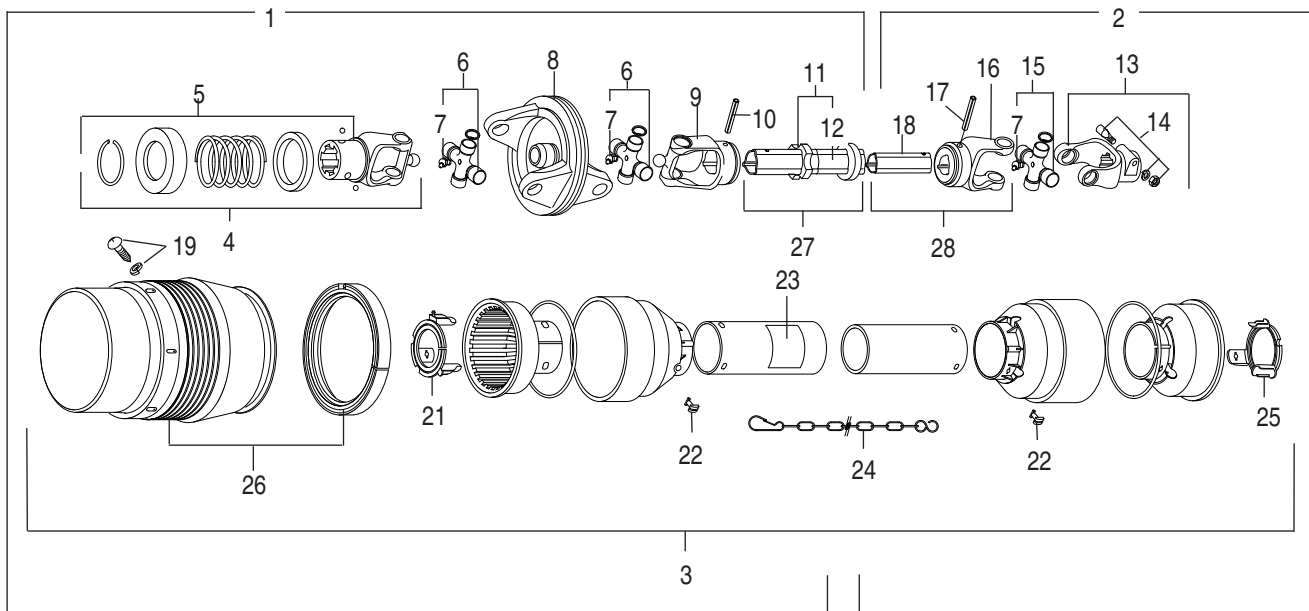
Mfd. by Monarch  
3" Bore x 12" Stroke 1.25" Rod Dia.  
3/4" – 16 ORB Ports

### 50017492 HYDRAULIC CYLINDER (REAR)

Mfd. by Monarch  
2" Bore x 8" Stroke 1.125" Rod Dia.  
3/4" – 16 ORB Ports

REF. NO.	PART NO.	QTY.	DESCRIPTION
1	95440	1	Clevis Cap
2	95439	1	Rod Cap
3	50017627	1	Piston
4	95436	1	Rod 1.25" Dia.
5	95437	1	Cylinder Tube
6	95438	4	Tie Rod
7	95425	2	Pin 1" Dia.
8	21020614	4	Cotter Pin 3/16" x 1 1/2"
9	95433	1	Thread Lock
10	95428	1	Rod Clevis 1.25" x 1"
11	95422	1	Set Screw 3/8" x 1/2 Knurled
12	8151600	8	Hex Nut 1/2" – 14 UNC
13	95421	1	Hex Nut 1"-14
14	95435	1	Plug 3/4"
15	95423	1	Caution Decal
16	50017622	1	Seal Kit

REF. NO.	PART NO.	QTY.	DESCRIPTION
1	95458	1	Clevis Cap
2	92457	1	Rod Cap
3	95460	1	Piston
4	95459	1	Rod 1.125" Dia.
5	95454	1	Cylinder Tube
6	95455	4	Tie Rod
7	95425	2	Pin 1" Dia.
8	21020614	4	Cotter Pin 3/16" x 1 1/2"
9	95433	1	Thread Lock
10	95456	1	Rod Clevis 1.125" x 1"
11	95422	1	Set Screw 3/8" x 1/2 Knurled
12	8151200	8	Hex Nut 3/8"
13	95452	1	Hex Nut 3/4" UNF
14	95435	1	Plug 3/4"
15	95423	1	Caution Decal
16	50017620	1	Seal Kit

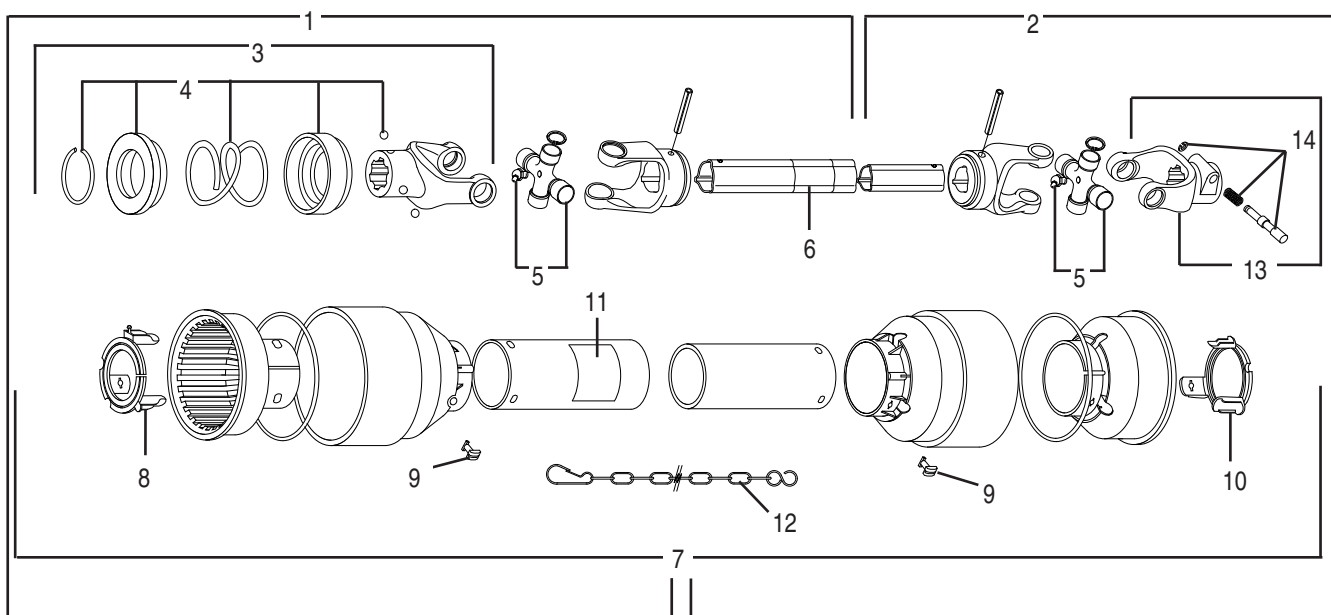


### 93063 C.V. DRIVELINE (540 RPM)

Mfd. by Comer/EG

Input Shaft for all Tri-Deck Models

REF. NO.	PART NO.	QTY.	DESCRIPTION
1	76938	1	Tractor Half Assembly
2	76522	1	Implement Half Assembly
3	76937	1	Complete Shield Assembly
4	50017505	1	Yoke Assy. w/Collar
5	50017480	1	Collar Kit
6	76420	2	Cross Bearing Kit
7	76579	3	Grease Fitting
8	76421	1	Double Yoke Assembly
9	76471	1	Outer Yoke
10	66866	1	Roll Pin
11	76474	1	Outer Tube Assembly
12	78786	1	Decal, Danger Outer
13	76056	1	Yoke & Pin Assembly
14	76064	1	Taper Pin Kit
15	64663	1	Cross Bearing Kit
16	66870	1	Inner Yoke
17	66869	1	Roll Pin
18	76475	1	Inner Tube
19	76362	6	Screw Kit
20	76423	1	Bearing Ring
21	76057	1	Outer Bearing
22	87992	6	Shield Bolt
23	78608	1	Danger Decal
24	64814	3	Safety Chain
25	76059	1	Inner Bearing
26	76933	1	Guard Cone Set
27	76962	1	Female Yoke & Tube Assembly
28	76961	1	Male Yoke & Tube Assembly



**50053120 WING DRIVESHAFT**  
**540 RPM, 1-3/8" 6 Spline**

**50053121 REAR DRIVESHAFT**  
**540 RPM, 1-3/8" 6 Spline**

**Models: TX1500 & TX1700**  
**Mfd. by Comer**

REF. NO.	PART NO.	QTY.	DESCRIPTION
1	50053146	1	Outer Half w/Shielding (Wing)
	50053150	1	Outer Half w/Shielding (Rear)
2	50053147	1	Inner Half w/Shielding (Wing)
	50053150	1	Inner half w/Shielding (Rear)
3	76711	1	Complete Collar Yoke
4	50017480	1	Ball Collar Kit 1-3/8"
5	64694	2	Cross Bearing Kit
6	78786	1	Danger Decal
7	50053145	1	Complete Shield Assy. (Wing)
	50053148	1	Complete Shield Assy. (Rear)
8	50053143	1	Bearing, Outer
9	50050289	6	Shield Bolt
10	50053144	1	Bearing, Inner
11	78608	1	Danger, Decal
12	64814	1	Safety Decal
13	76126	1	Push Pin Yoke
14	76062	1	Push Pin Set





# SERVIS-RHINO

## LIMITED WARRANTY

### 1. LIMITED WARRANTIES

- 1.01. Servis-Rhino warrants for one year from the purchase date to the original non-commercial, governmental, or municipal purchaser ("Purchaser") and warrants for six months to the original commercial or industrial purchaser ("Purchaser") that the goods purchased are free from defects in material or workmanship.
- 1.02. Manufacturer will replace for the Purchaser any part or parts found, upon examination at one of its factories, to be defective under normal use and service due to defects in material or workmanship.
- 1.03. This limited warranty does not apply to any part of the goods which has been subjected to improper or abnormal use, negligence, alteration, modification, or accident, damaged due to lack of maintenance or use of wrong fuel, oil, or lubricants, or which has served its normal life. This limited warranty does not apply to any part of any internal combustion engine, or expendable items such as blades, shields, guards, or pneumatic tires except as specifically found in your Operator's Manual.
- 1.04. Except as provided herein, no employee, agent, Dealer, or other person is authorized to give any warranties of any nature on behalf of Manufacturer.

### 2. REMEDIES AND PROCEDURES.

- 2.01. This limited warranty is not effective unless the Purchaser returns the Registration and Warranty Form to Manufacturer within 30 days of purchase.
- 2.02. Purchaser claims must be made in writing to the Authorized Dealer ("Dealer") from whom Purchaser purchased the goods or an approved Authorized Dealer ("Dealer") within 30 days after Purchaser learns of the facts on which the claim is based.
- 2.03. Purchaser is responsible for returning the goods in question to the Dealer.
- 2.04. If after examining the goods and/or parts in question, Manufacturer finds them to be defective under normal use and service due to defects in material or workmanship, Manufacturer will:
  - (a) Repair or replace the defective goods or part(s) or
  - (b) Reimburse Purchaser for the cost of the part(s) and reasonable labor charges (as determined by Manufacturer) if Purchaser paid for the repair and/or replacement prior to the final determination of applicability of the warranty by Manufacturer.The choice of remedy shall belong to Manufacturer.
- 2.05. Purchaser is responsible for any labor charges exceeding a reasonable amount as determined by Manufacturer and for returning the goods to the Dealer, whether or not the claim is approved. Purchaser is responsible for the transportation cost for the goods or part(s) from the Dealer to the designated factory.

### 3. LIMITATION OF LIABILITY.

- 3.01. MANUFACTURER DISCLAIMS ANY EXPRESS (EXCEPT AS SET FORTH HEREIN) AND IMPLIED WARRANTIES WITH RESPECT TO THE GOODS INCLUDING, BUT NOT LIMITED TO, MERCHANTABILITY AND FITNESS FOR A PARTICULAR PURPOSE.
- 3.02. MANUFACTURER MAKES NO WARRANTY AS TO THE DESIGN, CAPABILITY, CAPACITY, OR SUITABILITY FOR USE OF THE GOODS.
- 3.03. EXCEPT AS PROVIDED HEREIN, MANUFACTURER SHALL HAVE NO LIABILITY OR RESPONSIBILITY TO PURCHASER OR ANY OTHER PERSON OR ENTITY WITH RESPECT TO ANY LIABILITY, LOSS, OR DAMAGE CAUSED OR ALLEGED TO BE CAUSED DIRECTLY OR INDIRECTLY BY THE GOODS INCLUDING, BUT NOT LIMITED TO, ANY INDIRECT, SPECIAL, CONSEQUENTIAL, OR INCIDENTAL DAMAGES RESULTING FROM THE USE OR OPERATION OF THE GOODS OR ANY BREACH OF THIS WARRANTY. NOTWITHSTANDING THE ABOVE LIMITATIONS AND WARRANTIES, MANUFACTURER'S LIABILITY HEREUNDER FOR DAMAGES INCURRED BY PURCHASER OR OTHERS SHALL NOT EXCEED THE PRICE OF THE GOODS.
- 3.04. NO ACTION ARISING OUT OF ANY CLAIMED BREACH OF THIS WARRANTY OR TRANSACTIONS UNDER THIS WARRANTY MAY BE BROUGHT MORE THAN TWO (2) YEARS AFTER THE CAUSE OF ACTION HAS OCCURRED.

### 4. MISCELLANEOUS.

- 4.01. Proper Venue for any lawsuits arising from or related to this limited warranty shall be only in Guadalupe County, Texas.
- 4.02. Manufacturer may waive compliance with any of the terms of this limited warranty, but no waiver of any terms shall be deemed to be a waiver of any other term.
- 4.03. If any provision of this limited warranty shall violate any applicable law and is held to be unenforceable, then the invalidity of such provision shall not invalidate any other provisions herein.
- 4.04. Applicable law may provide rights and benefits to purchaser in addition to those provided herein.

### KEEP FOR YOUR RECORDS

ATTENTION: Purchaser should fill in the blanks below for his reference when buying repair parts and/or for proper machine identification when applying for warranty.

Servis-Rhino Implement Model \_\_\_\_\_ Serial Number \_\_\_\_\_

Date Purchased \_\_\_\_\_ Dealer \_\_\_\_\_

ATTENTION:  
READ YOUR OPERATOR'S MANUAL

**RHINO®**  
1020 S. Sangamon Ave.  
Gibson City, IL 60936  
800-446-5158  
Email: parts@servis-rhino.com





## TO THE OWNER/OPERATOR/DEALER

To keep your implement running efficiently and safely, read your manual thoroughly and follow these directions and the Safety Messages in this Manual. The Table of Contents clearly identifies each section where you can easily find the information you need.

The OCCUPATIONAL SAFETY AND HEALTH ACT (1928.51 Subpart C) makes these minimum safety requirements of tractor operators:

### REQUIRED OF THE OWNER:

1. Provide a Roll-Over-Protective Structure that meets the requirements of this Standard; and
2. Provide Seatbelts that meet the requirements of this paragraph of this Standard and SAE J4C; and
3. Ensure that each employee uses such Seatbelt while the tractor is moving; and
4. Ensure that each employee tightens the Seatbelt sufficiently to confine the employee to the protected area provided by the ROPS.

### REQUIRED OF THE OPERATOR

1. Securely fasten seatbelt if the tractor has a ROPS.
2. Where possible, avoid operating the tractor near ditches, embankments, and holes.
3. Reduce speed when turning, crossing slopes, and on rough, slick, or muddy surfaces.
4. Stay off slopes too steep for safe operation.
5. Watch where you are going - especially at row ends, on roads, and around trees.
6. Do not permit others to ride.
7. Operate the tractor smoothly - no jerky turns, starts, or stops.
8. Hitch only to the drawbar and hitch points recommended by the tractor manufacturer.
9. When the tractor is stopped, set brakes securely and use park lock, if available.



**Keep children away from danger all day, every day...**



**Equip tractors with rollover protection (ROPS) and keep all machinery guards in place...**



**Please work, drive, play and live each day with care and concern for your safety and that of your family and fellow citizens.**

