



Rev 01-F5

JR,
JF10
JR12

ÚDÁĚĪÚ

PART'S MANUAL

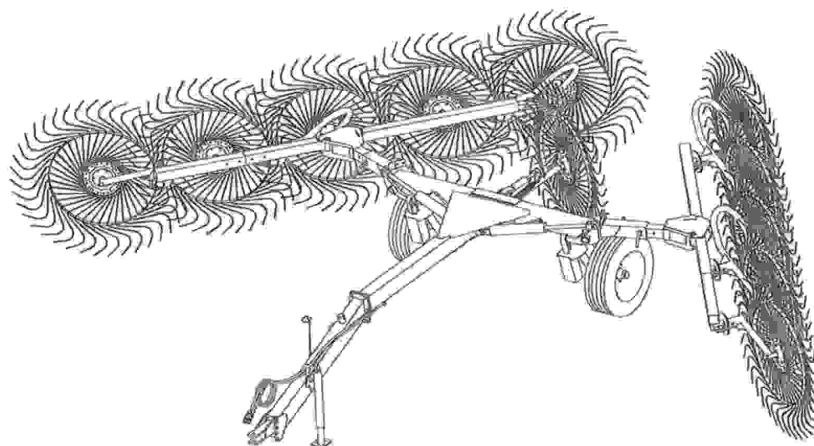


An Operator's Manual was shipped with the equipment in the Manual Canister. This Operator's Manual is an integral part of the safe operation of this machine and must be maintained with the unit at all times. **READ, UNDERSTAND, and FOLLOW** the Safety and Operation Instructions contained in this manual before operating the equipment. If the Operator's Manual is not with the equipment, contact your dealer or Servis-Rhino (800-446-5158) to obtain a Free copy before operating the equipment.

ATENCIÓN!

LEA EL INSTRUCTIVO

Si No Lee Ingles, Pida Ayuda a Alguien
Que Si Lo Lea Para Que le Traduzca las
Medidas de Seguridad.



RHINO®

1020 S. Sangamon Ave.
Gibson City, IL 60936
800-446-5158

Email: parts@servis-rhino.com




© 2034 Alamo Group Inc.

TO THE OWNER/OPERATOR/DEALER

All implements with moving parts are potentially hazardous. There is no substitute for a cautious, safe-minded operator who recognizes the potential hazards and follows reasonable safety practices. The manufacturer has designed this implement to be used with all its safety equipment properly attached to minimize the chance of accidents.




BEFORE YOU START!!! Read the safety messages on the implement and shown in your manual.

Observe the rules of safety and common sense!



DANGER

FAILING TO FOLLOW SAFETY MESSAGES AND OPERATING INSTRUCTIONS CAN CAUSE SERIOUS BODILY INJURY OR EVEN DEATH TO OPERATOR AND OTHERS IN THE AREA.

| | | | |
|---|--|--|---|
| <p>1. </p> | <p>2. NO RIDERS, NO CHILDREN OPERATORS </p> | <p>3. USE SAFETY SHOES, HARD HAT, SAFETY GLASSES, SEATBELTS, & RCPS </p> | <p>4. BLOCK UP SECURELY BEFORE WORKING UNDER. </p> |
|---|--|--|---|

1. Study and understand Operator's Manuals, Safety Signs, and Instructional Decals for tractor & flail mower to prevent misuse, abuse, & accidents. Practice before operating mower in a confined area or near passersby.

- Learn how to stop engine suddenly in an emergency. Be alert for passersby and especially children.

2. Allow no children on or near implement or tractor. Allow no riders on tractor or implement. Falling off can cause serious injury or death from being run over by tractor or mower or contact with Flail Mower Blades.

3. Operate only with tractor having Roll-Over Protective Structure (RCPS) and with seatbelt fastened securely and snugly to prevent injury and possible death from falling off or tractor overturn. Personal Protective Equipment such as Hard Hat, Safety Glasses, Safety Shoes, and Ear Plugs are recommended.

4. Block up or support raised machine and all lifted components securely before putting hands or feet under or working underneath any lifted component to prevent crushing injury or death from sudden dropping or inadvertent operation of controls. Make certain that area is clear before lowering or folding.

5. Before transporting, put Lift Lever in detent or full-lift position. Install Transport Safety Devices securely on folding implements. Slow down when turning and on hillsides.



- Install "Restrictor" in folding circuit to slow down lowering and unfolding if action is faster than is desirable.

6. Make certain that SMV sign, Warning Lights, and Reflectors are clearly visible. Follow local traffic codes.

7. Never operate with Flail Mower or Folding Section raised if passersby, bystanders or traffic are in the area to reduce possibility of injury or death from objects thrown by Blades, under Shields or implement structure.

8. Before dismounting, secure flail mower in transport position or lower to ground.

- Put tractor in park or set brake, disengage PTO, stop engine, remove key, and wait until noise of rotation has ceased to prevent entanglement in rotating parts which may cause injury or death.
- Never mount or dismount a moving vehicle. Crushing from runover may cause injury or death.

| | | | |
|--|--|--|--|
| <p>5. TRANSPORT SAFELY, LOCK UP. </p> | <p>6. USE SMV, LIGHTS, & REFLECTORS. </p> | <p>7. DO NOT OPERATE WITH MOWER OR WING RAISED. </p> | <p>8. DO NOT MOUNT OR DISMOUNT WHILE MOVING. </p> |
|--|--|--|--|

WARRANTY INFORMATION:

Read and understand the complete Warranty Statement found in this Manual. Fill out the Warranty Registration Form in full and return it within 30 Days. Make certain the Serial Number of the Machine is recorded on the Warranty Card and on the Warranty Form that you retain. The use of "will-fit" parts will void your warranty and can cause catastrophic failure with possible injury or death.

PARTS SECTION

PARTS ORDERING GUIDE

The following instructions are offered to help eliminate needless delay and error in processing purchase orders for the equipment in this section.

1. The Parts Section is prepared in logical sequence and grouping of parts that belong to the basic machine featured in this manual. Part Numbers and Descriptions are given to help locate the parts and quantities required.
2. The Purchase Order must include the name and address of the person or organization ordering the parts, who should be charged, and if possible, the serial number of the machine for which the parts are ordered.
3. The Purchase Order must clearly list the quantity of each part, the complete and correct part number (be sure to include all periods), and the basic name of the part.
4. The Manufacturer reserves the right to substitute parts where applicable.
5. Some parts are unlisted items which are special production items not normally stocked and are subject to special handling. Request a quotation for such parts before sending a Purchase Order.
6. The Manufacturer reserves the right to change prices without prior notice.

NOTE: Please refer to The Safety Section in the front of this Manual for the proper Part Number when ordering Replacement Safety Decals.



For maximum safety and to guarantee optimum product reliability, always use genuine Servis-Rhino Parts. The use of inferior replacement parts may cause premature or catastrophic failure which could result in serious injury or death. Direct any questions regarding parts to:

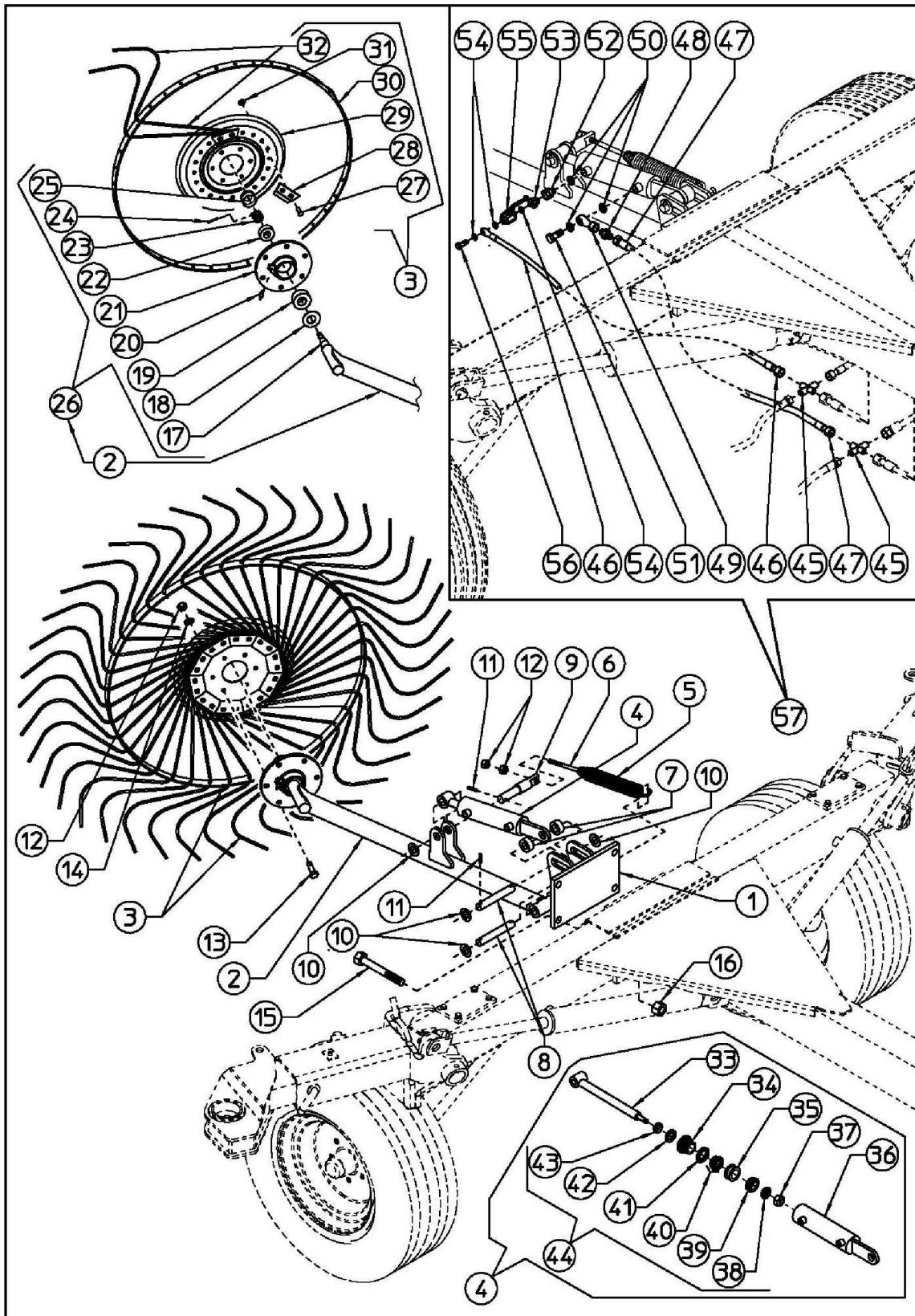


RHINO®
1020 S. Sangamon Ave.
Gibson City, IL 60936
800-446-5158
Email: parts@servis-rhino.com

PART NAME INDEX

| | |
|---|----|
| CENTER WHEEL KIT..... | 4 |
| HYDRAULIC ASSEMBLY..... | 7 |
| HYDRAULIC WIND ROW KIT - VR12 (OPTIONAL)..... | 9 |
| HYDRAULIC WIND ROW KIT - VR8-10 (OPTIONAL)..... | 11 |
| MAINFRAME ASSEMBLY..... | 13 |
| RAKE ARM ASSEMBLY..... | 16 |
| WHEEL ASSEMBLY AND ATTACHMENT..... | 18 |

CENTER WHEEL KIT



CENTER WHEEL KIT

Continued...

| ITEM | PART NO. | QTY. | DESCRIPTION |
|------|----------|------|--|
| 1 | 3690356 | 1 | SUPPORT |
| 2 | 3690357 | 1 | ARM |
| 3 | 3660103 | 1 | WHEEL ASSY L.H. (TINE DIA 0,276" 7MM) |
| 4 | 3697118 | 1 | CYLINDER |
| 5 | 3697425 | 1 | SPRING |
| 6 | 3667509 | 1 | TIE ROD |
| 7 | 3697574 | 2 | SPACER |
| 8 | 3697575 | 2 | PIN |
| 9 | 3697576 | 1 | PIN |
| 10 | 701517C | 5 | WASHER ϕ 21 DIN 125A |
| 11 | 703413W | 5 | SPING PIN ϕ 6X35 DIN 1481 |
| 12 | 00755949 | 8 | NUT M10 DIN 934 |
| 13 | 61368C8 | 6 | SCREW M10 X 25 DIN 933 |
| 14 | 00755954 | 6 | SPRING WASHER D 10,5 SIMILAR TO DIN 127B |
| 15 | 610914C8 | 4 | SCREW M16X150 DIN 931 |
| 16 | 3038445 | 4 | NUT M16 DIN 980 |
| 17 | 3637509 | 1 | PIN |
| 18 | 3736800 | 1 | DUST COVER |
| 19 | 3736000 | 1 | BEARING 30205 |
| 20 | 2568408 | 1 | GREASE NIPPLE M8 |
| 21 | 3637504 | 1 | WHEEL HUB |
| 22 | 3736001 | 1 | BEARING 30204 |
| 23 | 700728C | 1 | SELF-LOCKING NUT M18X1,5 |
| 24 | 70477 | 1 | SPLIT PIN ϕ 3X30 DIN 94 |
| 25 | 3736700 | 1 | SAFETY CAP |
| 26 | 3630100 | 1 | HUB ASSY |
| 27 | 70631C4 | 20 | SCREW M10X25 DIN 603 |
| 28 | 3637508 | 10 | TINE CLAMP |
| 29 | 3637505 | 1 | FLANGE |
| 30 | 3667523 | 1 | RIM |
| 31 | 00765676 | 20 | NUT M10 DIN 980 |
| 32 | 3667522 | 40 | TINE DIA 0,276" (7MM) |
| 33 | ----- | 1 | ROD ϕ 20 |
| 34 | ----- | 1 | HEAD ϕ 40/20 |
| 35 | ----- | 1 | PISTON ϕ 40 |
| 36 | ----- | 1 | CYLINDER BARREL ϕ 40/50 |
| 37 | ----- | 1 | NUT M18X1,5 DIN 985 |
| 38 | ----- | 1 | GASKET OR ϕ 12,34X2,62 |
| 39 | ----- | 1 | GASKET DBM 157118 |
| 40 | ----- | 1 | GASKET OR ϕ 36,14X2,62 + BK |
| 41 | ----- | 1 | GASKET OR ϕ 39,34X2,62 |

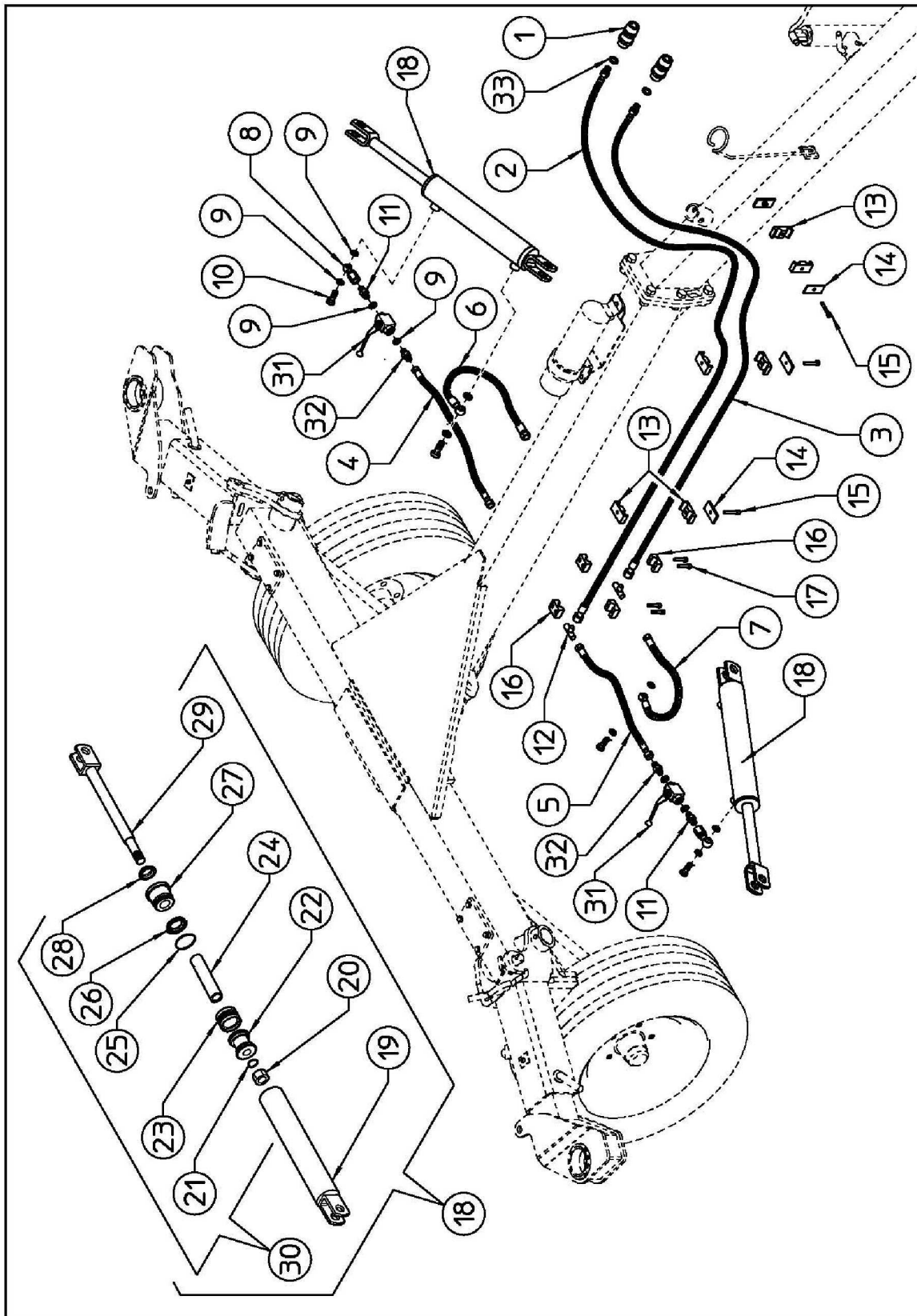
VR8 VR10 VR12

CENTER WHEEL KIT

Continued...

| ITEM | PART NO. | QTY. | DESCRIPTION |
|------|----------|------|-------------------------------------|
| 42 | ----- | 1 | GASKET ø20/28X5,8 |
| 43 | ----- | 1 | GASKET WRM 078110 |
| 44 | 3697119 | 1 | SEAL KIT |
| 45 | 3697120 | 2 | FITTING 1/4" |
| 46 | 3697232 | 1 | HOSE SAE 100R2AT X1/4" L.730-28,74" |
| 47 | 3697233 | 1 | HOSE SAE 100R2AT X1/4" L.640-25,20" |
| 48 | 3667143 | 1 | NIPPLE 3/8"-3/8" WITH ORIFICE 0,8 |
| 49 | 3697117 | 1 | FITTING 3/8" |
| 50 | 3678416 | 3 | COPPER WASHER 3/8" |
| 51 | 3637100 | 1 | FITTING 3/8" |
| 52 | 3667144 | 1 | FITTING 3/8" MALE-3/8" FEMALE |
| 53 | 3677104 | 1 | NIPPLE 1/4"-3/8" |
| 54 | 3678417 | 3 | COPPER WASHER 1/4" |
| 55 | 3697121 | 1 | VALVE 1/4" 170 BAR |
| 56 | 3677102 | 1 | FITTING 1/4" |
| 57 | ----- | 1 | HYDRAULIC KIT |
| 58 | 3690405 | 1 | WHEEL CENTRAL KIT (COMPLETE) |

HYDRAULIC ASSEMBLY



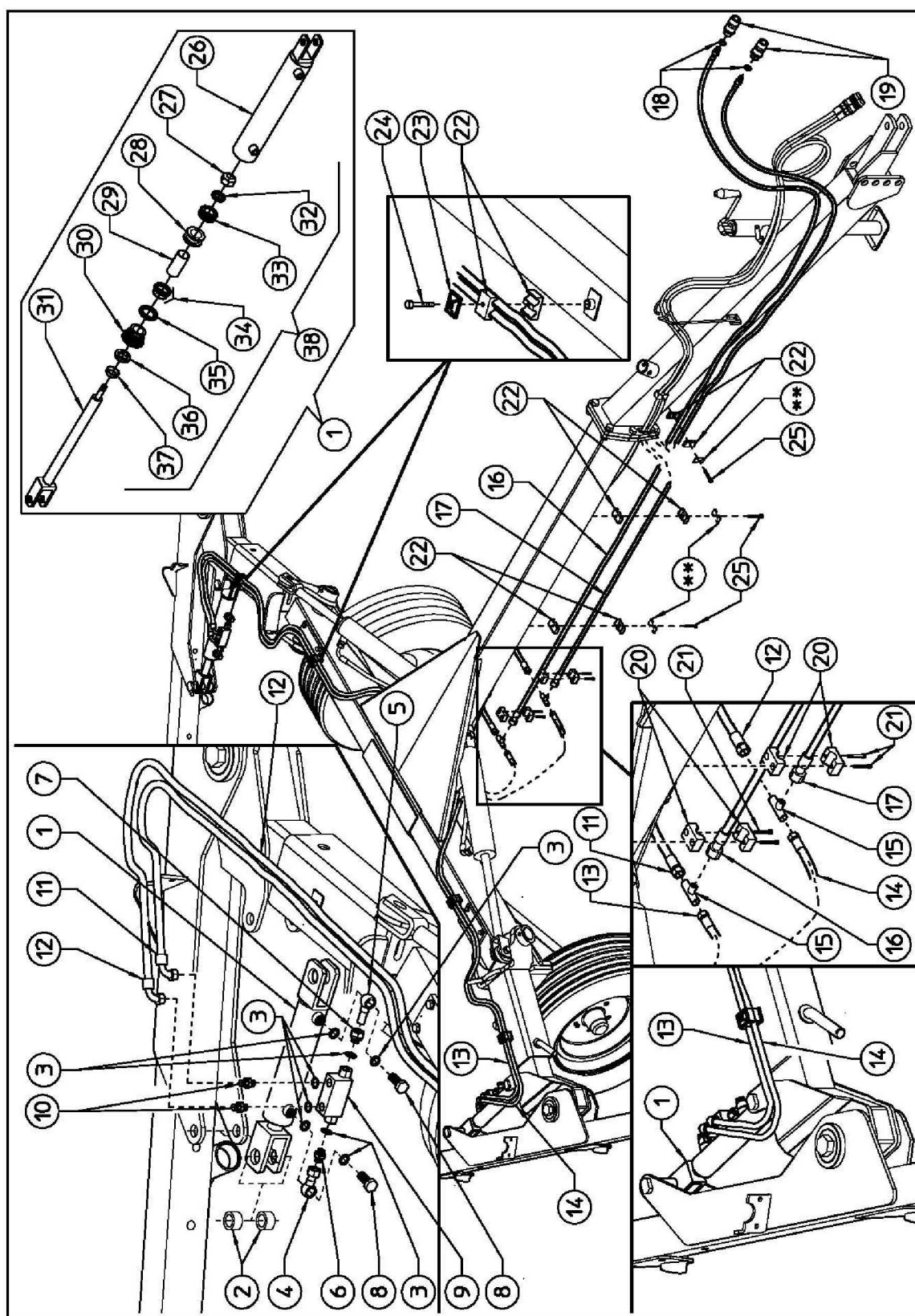
HYDRAULIC ASSEMBLY

Continued...

| ITEM | PART NO. | QTY. | DESCRIPTION |
|------|----------|------|--|
| 1 | 3637102 | 2 | RAPID COUPLING 1/2" |
| 2 | 3697220 | 1 | HOSE SAE100 R2AT 1/4" L 4300 FD-MD (FOR VR/8-10) |
| 2a | 3697221 | 1 | HOSE SAE100 R2AT 1/4" L 5100 FD-MD (FOR VR/12) |
| 3 | 3697222 | 1 | HOSE SAE100 R2AT 1/4" L 4150 FD-MD (FOR VR/8-10) |
| 3a | 3697223 | 1 | HOSE SAE100 R2AT 1/4" L 4950 FD-MD (FOR VR/12) |
| 4 | 3697224 | 1 | HOSE SAE100 R2AT 1/4" L 420 FD-FD |
| 5 | 3697225 | 1 | HOSE SAE100 R2AT 1/4" L 540 FD-FD |
| 6 | 3697226 | 1 | HOSE SAE100 R2AT 1/4" L 475 FD-OC |
| 7 | 3697227 | 12 | HOSE SAE100 R2AT 1/4" L 420 FD-OC |
| 8 | 3697117 | 4 | TURNING FITTING FD-OC |
| 9 | 3678416 | 2 | COPPER WASHER 3/8" |
| 10 | 3637100 | 2 | FITTING SCREW |
| 11 | 3667143 | 6 | NIPPLE 3/8" - 3/8" 0,8 |
| 12 | 3697116 | 3 | FITTING M-M-M 1/4" |
| 13 | 3698442 | 3 | HOSE COLLAR ø16 |
| 14 | 3698443 | 4 | PLATE |
| 15 | 613511C8 | 4 | SCREW M8X35 DIN 931 |
| 16 | 3668424 | 2 | HOSE COLLAR |
| 17 | 70788C8 | 2 | SCREW M6X25 TCEI |
| 18 | 3697129 | 1 | CYLINDER |
| 19 | ----- | 1 | CYLINDER BARREL |
| 20 | ----- | 2 | NUT |
| 21 | ----- | 1 | GASKET |
| 22 | ----- | 2 | PISTON |
| 23 | ----- | 1 | GASKET |
| 24 | ----- | 1 | SPACER |
| 25 | ----- | 2 | GASKET |
| 26 | ----- | 1 | GASKET |
| 27 | ----- | 2 | CYLINDER HEAD |
| 28 | ----- | 1 | GASKET |
| 29 | ----- | 2 | ROD |
| 30 | 3667147 | 1 | SEAL KIT (FOR ONE CYLINDER) |
| 31 | 3667350 | 2 | VALVE |
| 32 | 3667105 | 2 | NIPPLE 3/8" - 3/8" |
| 33 | 3698444 | 2 | COPPER WASHER 1/2" |

VR8 VR10 VR12

HYDRAULIC WIND ROW KIT - VR12 (OPTIONAL)



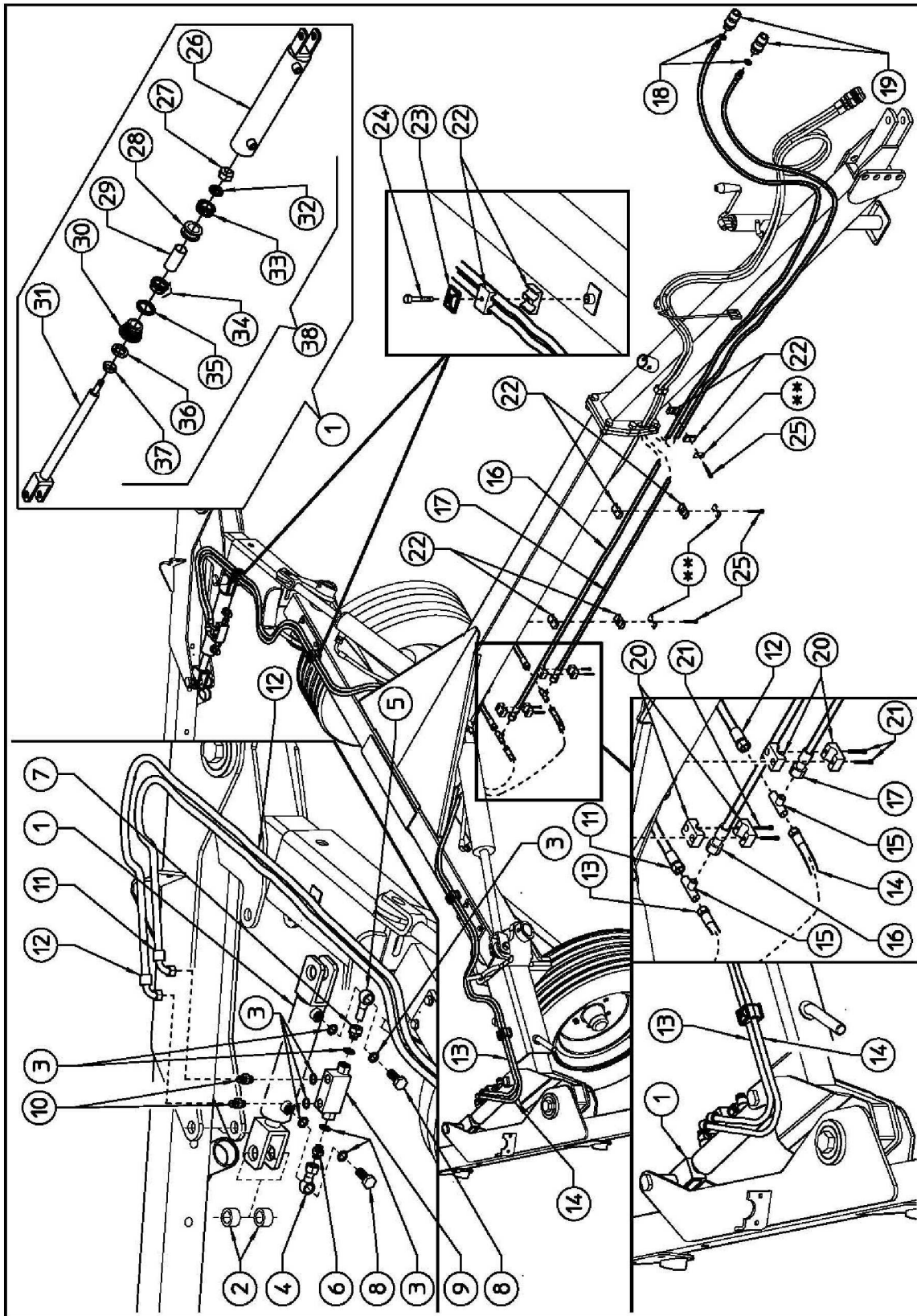
HYDRAULIC WIND ROW KIT - VR12 (OPTIONAL)

Continued...

| ITEM | PART NO. | QTY. | DESCRIPTION |
|------|----------|------|---|
| 1 | 3697122 | 2 | CYLINDER |
| 2 | 3697574 | 4 | BUSH |
| 3 | 3678417 | 16 | COPPER WASHER $\phi 1/4"$ |
| 4 | 3697123 | 2 | FITTING $1/4"$ |
| 5 | 3697124 | 2 | TUBE |
| 6 | 3697126 | 2 | NIPPLE $1/4"-1/4"$ WITH ORIFICE 0,6 |
| 7 | 3697125 | 2 | FITTING MALE $1/4"$ FEMALE $\phi 12$ |
| 8 | 3697102 | 4 | FITTING $1/4"$ |
| 9 | 3697127 | 2 | LOCK VALVE $1/4"$ |
| 10 | 3697128 | 4 | NIPPLE $1/4"-1/4"$ |
| 11 | 3697228 | 1 | HOSE R2 AT $1/4"$ LENGTH 1900MM-74,80" |
| 12 | 3697229 | 1 | HOSE R2 AT $1/4"$ LENGTH 2150MM-84,65" |
| 13 | 3697230 | 1 | HOSE R2 AT $1/4"$ LENGTH 2000MM-78,74" |
| 14 | 3697231 | 1 | HOSE R2 AT $1/4"$ LENGTH 2050MM-80,71" |
| 15 | 3697116 | 2 | FITTING MALE $1/4"$ |
| 16 | 3697220 | 1 | HOSE R2 AT $1/4"$ LENGTH 4300MM-200,78" |
| 17 | 3697222 | 1 | HOSE R2 AT $1/4"$ LENGTH 4150MM-194,88" |
| 18 | 3698444 | 2 | COPPER WASHER $\phi 1/2"$ |
| 19 | 3637102 | 2 | RAPID COUPLING $1/2"$ |
| 20 | 3668424 | 4 | HOSE COLLAR |
| 21 | 707815C8 | 4 | SCREW M6X60 DIN 912 |
| 22 | 3698442 | 14 | DOUBLE HOSE COLLAR |
| 23 | 3698443 | 4 | COLLAR CLAMP |
| 24 | 8495 | 4 | SCREW M8X35 DIN 931 |
| 25 | 61056C8 | 3 | SCREW M8X60 DIN 931 |
| 26 | ----- | 2 | CYLINDER BARREL $\phi 40/50$ |
| 27 | ----- | 2 | NUT M18X1,5 DIN 985 |
| 28 | ----- | 2 | PISTON $\phi 40$ |
| 29 | ----- | 2 | SPACER |
| 30 | ----- | 2 | HEAD $\phi 40/20$ |
| 31 | ----- | 2 | ROD $\phi 20$ |
| 32 | ----- | 2 | GASKET OR $\phi 12,34 \times 2,62$ |
| 33 | ----- | 2 | GASKET DBM 157118 |
| 34 | ----- | 2 | GASKET OR $\phi 36,14 \times 2,62$ + BK |
| 35 | ----- | 2 | GASKET OR $\phi 39,34 \times 2,62$ |
| 36 | ----- | 2 | GASKET $\phi 20/28 \times 5,8$ |
| 37 | ----- | 2 | GASKET WRM 078110 |
| 38 | 3697119 | 2 | SEAL KIT |

VR8 VR10 VR12

HYDRAULIC WIND ROW KIT - VR8-10 (OPTIONAL)



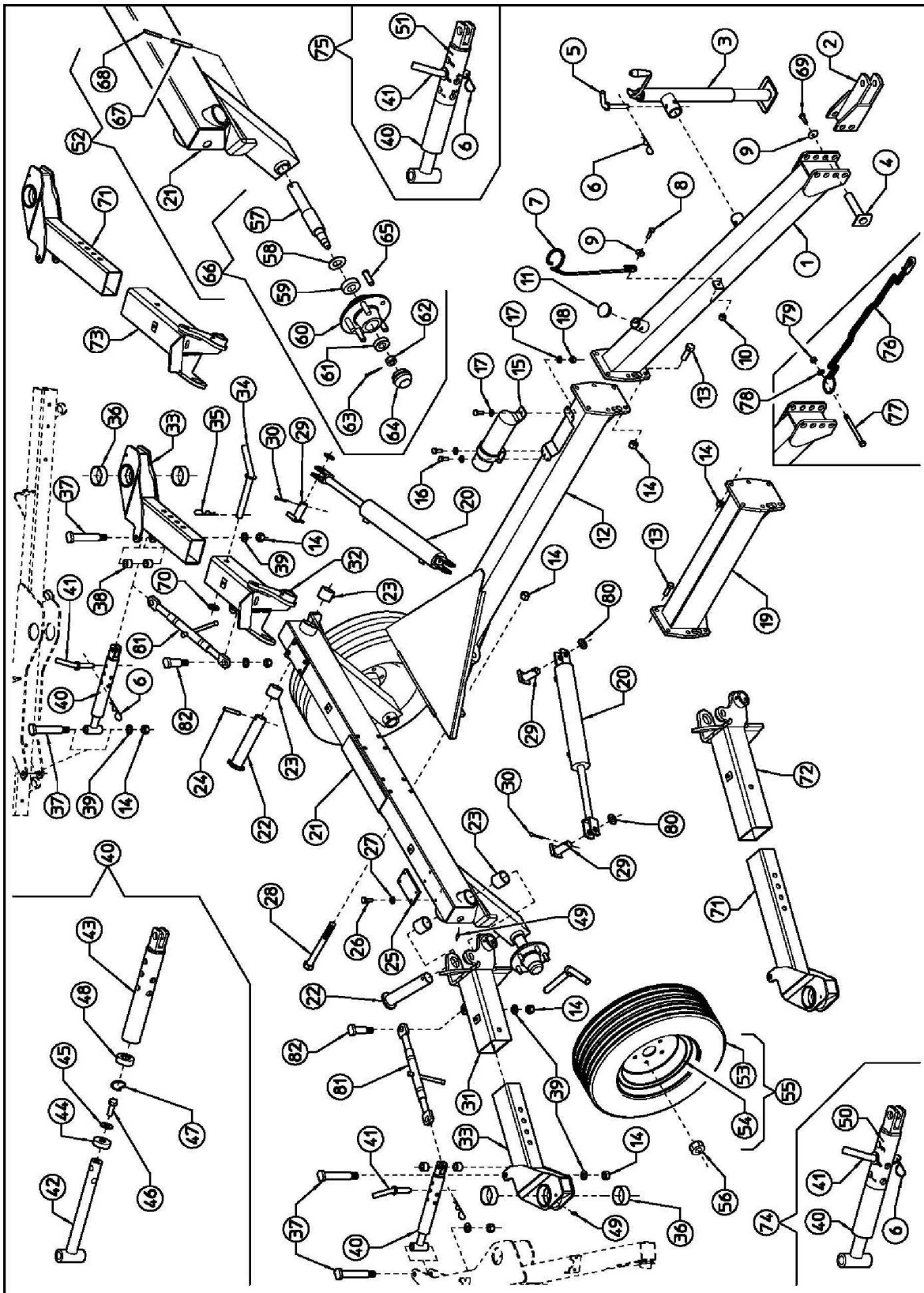
HYDRAULIC WIND ROW KIT - VR8-10 (OPTIONAL)

Continued...

| ITEM | PART NO. | QTY. | DESCRIPTION |
|------|----------|------|---|
| 1 | 3697122 | 2 | CYLINDER |
| 2 | 3697574 | 4 | BUSH |
| 3 | 3678417 | 16 | COPPER WASHER $\phi 1/4"$ |
| 4 | 3697123 | 2 | FITTING $1/4"$ |
| 5 | 3697124 | 2 | TUBE |
| 6 | 3697126 | 2 | NIPPLE $1/4"-1/4"$ WITH ORIFICE 0,6 |
| 7 | 3697125 | 2 | FITTING MALE $1/4"$ FEMALE $\phi 12$ |
| 8 | 3697102 | 4 | FITTING $1/4"$ |
| 9 | 3697127 | 2 | LOCK VALVE $1/4"$ |
| 10 | 3697128 | 4 | NIPPLE $1/4"-1/4"$ |
| 11 | 3697228 | 1 | HOSE R2 AT $1/4"$ LENGTH 1900MM-74,80" |
| 12 | 3697229 | 1 | HOSE R2 AT $1/4"$ LENGTH 2150MM-84,65" |
| 13 | 3697230 | 1 | HOSE R2 AT $1/4"$ LENGTH 2000MM-78,74" |
| 14 | 3697231 | 1 | HOSE R2 AT $1/4"$ LENGTH 2050MM-80,71" |
| 15 | 3697116 | 2 | FITTING MALE $1/4"$ |
| 16 | 3697220 | 1 | HOSE R2 AT $1/4"$ LENGTH 4300MM-169,29" |
| 17 | 3697222 | 1 | HOSE R2 AT $1/4"$ LENGTH 4150MM-163,38" |
| 18 | 3698444 | 2 | COPPER WASHER $\phi 1/2"$ |
| 19 | 3637102 | 2 | RAPID COUPLING $1/2"$ |
| 20 | 3668424 | 4 | HOSE COLLAR |
| 21 | 707815C8 | 4 | SCREW M6X60 DIN 912 |
| 22 | 3698442 | 14 | DOUBLE HOSE COLLAR |
| 23 | 3698443 | 4 | COLLAR CLAMP |
| 24 | 8495 | 4 | SCREW M8X35 DIN 931 |
| 25 | 61056C8 | 3 | SCREW M8X60 DIN 931 |
| 26 | ----- | 2 | CYLINDER BARREL $\phi 40/50$ |
| 27 | ----- | 2 | NUT M18X1,5 DIN 985 |
| 28 | ----- | 2 | PISTON $\phi 40$ |
| 29 | ----- | 2 | SPACER |
| 30 | ----- | 2 | HEAD $\phi 40/20$ |
| 31 | ----- | 2 | ROD $\phi 20$ |
| 32 | ----- | 2 | GASKET OR $\phi 12,34 \times 2,62$ |
| 33 | ----- | 2 | GASKET DBM 157118 |
| 34 | ----- | 2 | GASKET OR $\phi 36,14 \times 2,62 + BK$ |
| 35 | ----- | 2 | GASKET OR $\phi 39,34 \times 2,62$ |
| 36 | ----- | 2 | GASKET $\phi 20/28 \times 5,8$ |
| 37 | ----- | 2 | GASKET WRM 078110 |
| 38 | 3697119 | 2 | SEAL KIT |

VR8 VR10 VR12

MAINFRAME ASSEMBLY



MAINFRAME ASSEMBLY

Continued...

| ITEM | PART NO. | QTY. | DESCRIPTION |
|------|----------|------|------------------------------|
| 1 | 3690374 | 1 | DRAWBAR |
| 2 | 3690328 | 1 | BRACKET |
| 3 | 3668627 | 1 | PARKING STAND |
| 4 | 3660235 | 2 | PIN |
| 5 | 3638602 | 1 | PIN |
| 6 | 3638400 | 3 | SPLIT PIN ø3 |
| 7 | 3697567 | 1 | SUPPORT |
| 8 | 02979380 | 1 | SCREW M12X35 DIN 933 8.8 |
| 9 | 3668407 | 3 | WASHER ø12X36 |
| 10 | 00772648 | 1 | NUT M12 DIN 980 |
| 11 | 3667577 | 1 | PLUG |
| 12 | 3690357 | 1 | DRAWBAR, MAIN |
| 13 | 61091C8 | 6 | SCREW M16X50 DIN 931 8.8 |
| 14 | 3038445 | 20 | NUT M16 DIN 980 |
| 15 | 00776031 | 1 | CANISTER |
| 16 | 02699728 | 3 | SCREW M6X20 DIN 933 |
| 17 | 70232C | 6 | WASHER ø6,6-18X2 UNI 6593 |
| 18 | 70092C | 3 | NUT M6 DIN 980 |
| 19 | 3690341 | 1 | DRAWBAR (QR 12 ONLY) |
| 20 | 3697129 | 2 | CYLINDER, HYDRAULIC |
| 21 | 3690376 | 1 | CART FRAME |
| 22 | 3690338 | 2 | PIN, INNER ARM |
| 23 | 3637521 | 4 | BUSH |
| 24 | 703715W | 2 | SPRING PIN ø12X70 DIN 1481 |
| 25 | 3697580 | 2 | BLOCK, PLATE |
| 26 | 02958784 | 8 | SCREW M8X20 DIN 933 8.8 |
| 27 | 70234C | 8 | WASHER ø9-21X2 UNI 6593 |
| 28 | 610913C8 | 8 | SCREW M16X140 DIN 931 8.8 |
| 29 | 3690331 | 4 | PIN, CYLINDER |
| 30 | 70502 | 4 | SPLIT PIN D6X35 DIN 94 3.6 |
| 31 | 3690377 | 1 | RH ARM, INNER (QR 8-10 ONLY) |
| 32 | 3690378 | 1 | LH ARM, INNER (QR 8-10 ONLY) |
| 33 | 3690379 | 2 | ARM, OUTER (QR 8-10 ONLY) |
| 34 | 3690380 | 2 | PIN, LOCK ADJUSTMENT |
| 35 | 2558424 | 2 | SPLIT PIN ø4 |
| 36 | 3697581 | 4 | BUSHING |
| 37 | 3697582 | 4 | PIN, OUTER ARM |
| 38 | 3697574 | 4 | SPACER, CYLINDER |
| 39 | 701515C | 6 | WASHER ø17 UNI 6592 |
| 40 | 3690116 | 2 | TIE ROD, ASSY |
| 41 | 3690381 | 2 | P IN |

VR8 VR10 VR12

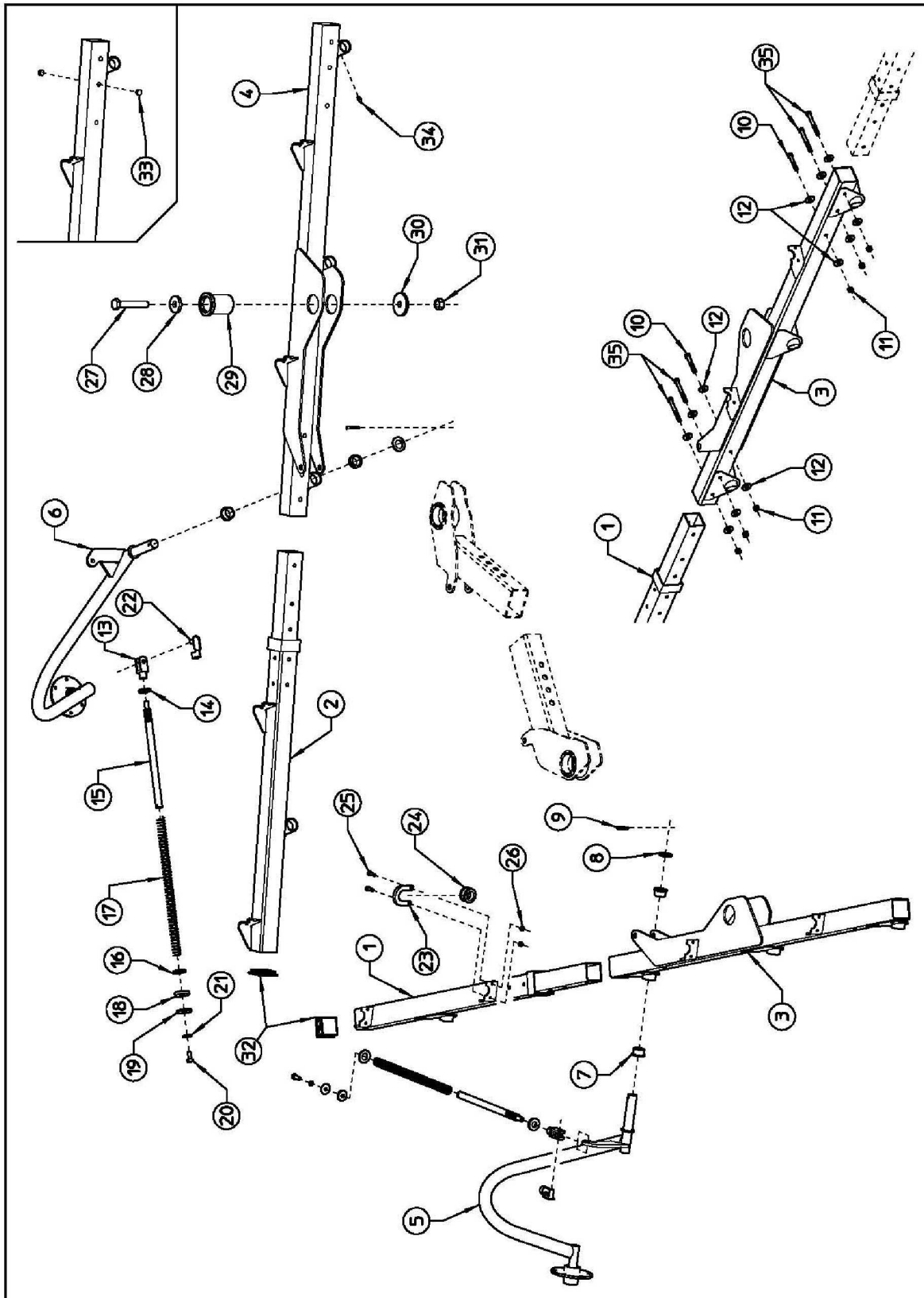
MAINFRAME ASSEMBLY

Continued...

| ITEM | PART NO. | QTY. | DESCRIPTION |
|------|----------|------|--|
| 42 | 3690382 | 2 | ROD |
| 43 | 3690383 | 2 | BARRE L |
| 44 | 3698433 | 2 | WAS HE R ø 11-40X10 |
| 45 | 00755954 | 2 | S P R ING WAS HE R ø 10,5 DIN 125A |
| 46 | 00754764 | 2 | S C R EW M 10X2 0 DIN 933 8.8 |
| 47 | 3698200 | 2 | S NAP R ING I42 DIN 472 |
| 48 | 3697583 | 2 | B US H |
| 49 | 2568408 | 4 | GR E AS E NIP P LE M 8 |
| 50 | 3698311 | 1 | DECAL, RH |
| 51 | 3698312 | 1 | DECAL, LH |
| 52 | 3690118 | 1 | CART F RAM E WIT H HUB S |
| 53 | 3637800 | 2 | TIR E |
| 54 | 3637600 | 2 | R IM |
| 55 | 3630103 | 2 | TIR E AS S Y |
| 56 | 3638406 | 10 | NUT M 16 X1,5 |
| 57 | 3697584 | 2 | BOLT-IN SPINDLE |
| 58 | 3666800 | 2 | DUS T C OVE R |
| 59 | 3666000 | 2 | BEAR ING 3 0208 |
| 60 | 3667505 | 2 | HUB |
| 61 | 3666001 | 2 | BEAR ING 3 0206 |
| 62 | 3668408 | 2 | NUT M 27X1,5 |
| 63 | 70487 | 2 | S P LIT P IN ø 4X40 DIN 94 3.6 |
| 64 | 3666700 | 2 | CAP |
| 65 | 3668414 | 10 | S C R EW M 16X1,5 |
| 66 | 3690117 | 2 | HUB AS S Y |
| 67 | 703714W | 2 | S P R ING P IN ø 12X60 DIN 148 1 |
| 68 | 3698434 | 2 | S P R ING P IN ø 7X60 DIN 1481 |
| 69 | 00762395 | 2 | S C R EW M 12X2 0 DIN 933 8.8 |
| 70 | 701517C | 2 | WAS HE R ø 21UNI 6 592 |
| 71 | 3690384 | 1 | AR M, OUTER (QR 12 ONLY) |
| 72 | 3690385 | 1 | RH AR M, INNER (QR 12 ONLY) |
| 73 | 3690386 | 1 | LH AR M, INNER (QR 12 ONLY) |
| 74 | 3690119 | 1 | TIE R OD DX, AS S Y WITH LAB EL |
| 75 | 3690120 | 1 | TIE R OD S X, AS S Y WIT H LAB E L |
| 76 | 00757908 | 1 | C HAIN |
| 77 | 02967536 | 1 | S C R EW M 2 2X150 DIN 931 |
| 78 | 701618C | 1 | S P R ING WASHE R ø 23 SIMILAR TO DIN 127B |
| 79 | 6W238 | 1 | NUT M 22 DIN 934 |
| 80 | 00776217 | 4 | WAS HE R ø 25 |
| 81 | 3690125 | 2 | TIE ROD |
| 82 | 3698445 | 2 | P IN |

VR8 VR10 VR12

RAKE ARM ASSEMBLY



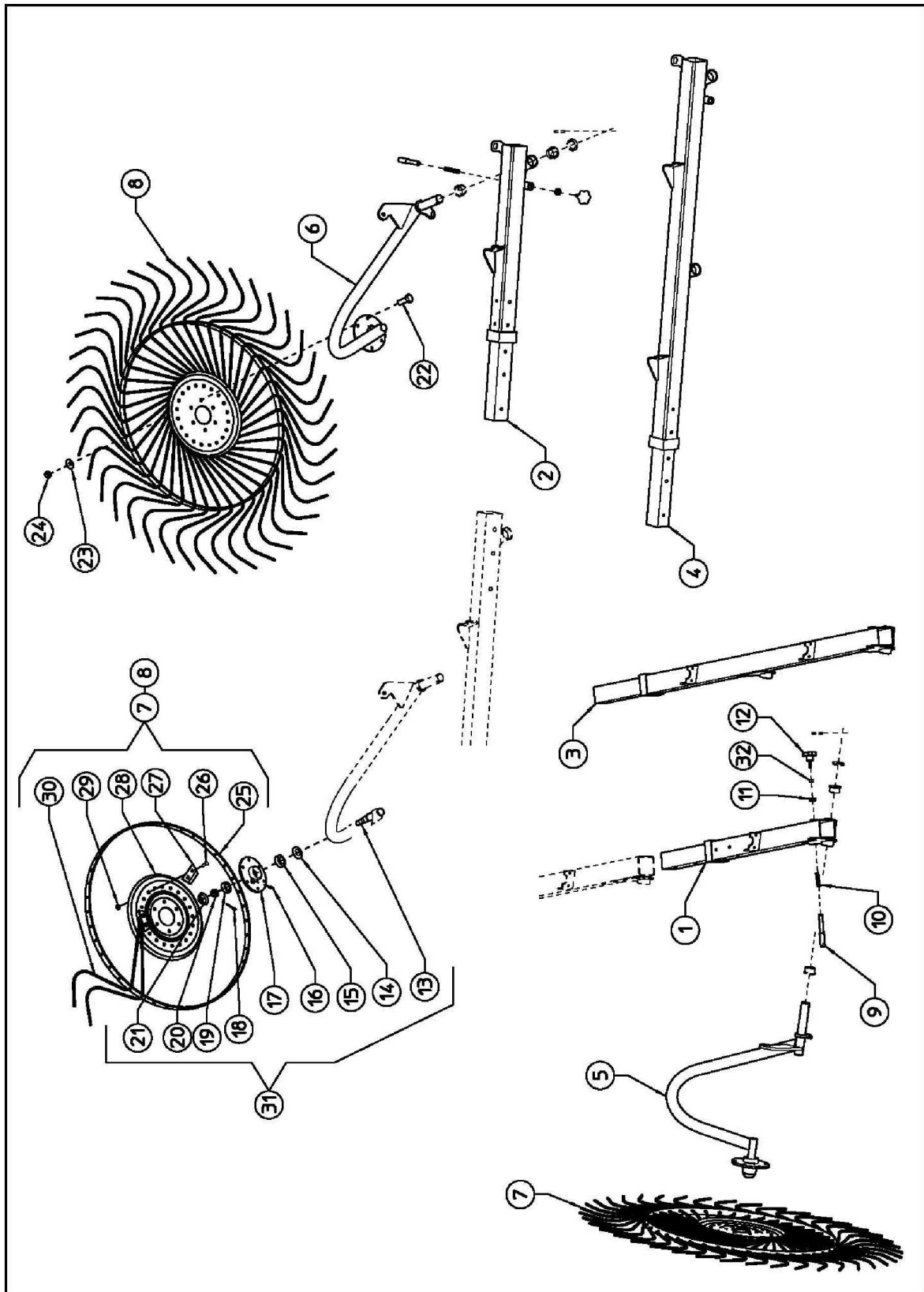
RAKE ARM ASSEMBLY

Continued...

| ITEM | PART NO. | QTY. | DESCRIPTION |
|------|----------|------|----------------------------------|
| 1 | 3690387 | 1 | RH EXTENSION |
| 2 | 3690388 | 1 | LH EXTENSION |
| 3 | 3690389 | 1 | MAIN TUBE, RH VR8-10 ONLY |
| 3a | 3690391 | 1 | MAIN TUBE, RH VR12 ONLY |
| 4 | 3690390 | 1 | MAIN TUBE, LH VR8-10 ONLY |
| 4a | 3690392 | 1 | MAIN TUBE, LH VR12 ONLY |
| 5 | 3690121 | 4 | WHEEL ARM, RH - WITH HUB |
| 6 | 3690122 | 4 | WHEEL ARM, LH - WITH HUB |
| 7 | 3637520 | 16 | BUSHING |
| 8 | 3638403 | 8 | WASHER $\phi 35,5-50X5$ |
| 9 | 703516W | 8 | SPRING PIN $\phi 8X50$ |
| 10 | 601712C8 | 6 | SCREW M12X100 DIN 931 8.8 |
| 11 | 772648 | 6 | NUT M12 DIN 980 |
| 12 | 3668407 | 12 | WASHER $\phi 12X36$ |
| 13 | 3690369 | 8 | FORK M16 |
| 14 | 3698446 | 8 | NUT M22 |
| 15 | 3697585 | 8 | ROD, WHEELARM ADJ. |
| 16 | 3698435 | 8 | WASHER $\phi 26-55X5$ |
| 17 | 3697428 | 8 | SPRING, ADJUSTMENT |
| 18 | 3698436 | 8 | WASHER $\phi 23-50X8$ |
| 19 | 3698437 | 8 | WASHER $\phi 13-50X4$ |
| 20 | 762462 | 8 | SCREW M12X25 DIN 933 8.8 |
| 21 | 701613C | 8 | SPRING WASHER $\phi 13$ DIN 125A |
| 22 | 3697586 | 8 | PIN, FORK |
| 23 | 3697587 | 8 | SUPPORT, U-BOLT BUSHING |
| 24 | 3697588 | 8 | BUSHING |
| 25 | 61358C8 | 16 | SCREW M8X25 DIN 933 8.8 |
| 26 | 70093C | 16 | NUT M8 DIN 980 |
| 27 | 611311C8 | 2 | SCREW M24X150 DIN 931 8.8 |
| 28 | 3698434 | 2 | WASHER $\phi 25-64X10$ |
| 29 | 3698439 | 2 | PIN, BUSHING |
| 30 | 3698440 | 2 | WASHER $\phi 25-90X10$ |
| 31 | 700911C | 2 | NUT M24 DIN 980 |
| 32 | 3696779 | 4 | PLUG |
| 33 | 3696780 | 12 | PLUG VR 8 ONLY |
| 34 | 1465 | 8 | GREASE NIPPLE M6 |
| 35 | 610713C8 | 4 | SCREW M12X110 DIN 931 8.8 |

VR8 VR10 VR12

WHEEL ASSEMBLY AND ATTACHMENT



WHEEL ASSEMBLY AND ATTACHMENT

Continued...

| ITEM | PART NO. | QTY. | DESCRIPTION |
|------|----------|------|---|
| 1 | 3690393 | 1 | RH EXSTENSION - FRONT VR10 ONLY |
| 2 | 3690394 | 1 | LH EXSTENSION - FRONT VR10 ONLY |
| 3 | 3690395 | 1 | RH EXSTENSION - FRONT VR12 ONLY |
| 4 | 3690396 | 1 | LH EXSTENSION - FRONT VR12 ONLY |
| 5 | 3690123 | 1 | WHEEL ARM, RH - FRONT |
| 6 | 3690124 | 1 | WHEEL ARM, LH - FRONT |
| 7 | 3630101 | 4 | WHEEL ASSY, RH |
| 8 | 3630102 | 4 | WHEEL ASSY, LH |
| 9 | 3697589 | 2 | PIN |
| 10 | 3697429 | 2 | SPRING |
| 11 | 700124C | 2 | NUT M16 DIN 936 |
| 12 | 3698441 | 2 | KNOB |
| 13 | 3637509 | 8 | SPINDLE - WELD ON |
| 14 | 3736800 | 8 | SEAL |
| 15 | 3736000 | 8 | BEARING 30205 |
| 16 | 2568408 | 8 | GREASE NIPPLE M8 |
| 17 | 3637504 | 8 | WHEEL HUB |
| 18 | 70477 | 8 | SPLIT PIN ϕ 3X30 DIN 94 |
| 19 | 3736001 | 8 | BEARING 30204 |
| 20 | 700728C | 8 | SELF-LOCKING NUT M18X1,5 |
| 21 | 3736700 | 8 | SAFETY CAP |
| 22 | 61368C8 | 48 | SCREW M10X25 DIN 933 8.8 |
| 23 | 00755954 | 48 | SPRING WASHER ϕ 10,5 SIMILAR TO DIN 127B |
| 24 | 00755949 | 48 | NUT M10 DIN 934-8 |
| 25 | 3637506 | 8 | RIM |
| 26 | 70631C4 | 160 | SCREW M10X25 DIN 603 |
| 27 | 3637508 | 80 | TINE CLAMP |
| 28 | 3637505 | 8 | FLANGE |
| 29 | 00765676 | 160 | NUT M10 DIN 980 |
| 30 | 3737507 | 320 | TINE DIA 0.276" (7MM) |
| 31 | 3630100 | 8 | HUB ASSY |
| 32 | 00755934 | 2 | NUT M8 DIN 934 |

VR8 VR10 VR12

SERVIS-RHINO

LIMITED WARRANTY

1. LIMITED WARRANTIES

- 1.01. Servis-Rhino warrants for one year from the purchase date to the original non-commercial, governmental, or municipal purchaser ("Purchaser") and warrants for six months to the original commercial or industrial purchaser ("Purchaser") that the goods purchased are free from defects in material or workmanship.
- 1.02. Manufacturer will replace for the Purchaser any part or parts found, upon examination at one of its factories, to be defective under normal use and service due to defects in material or workmanship.
- 1.03. This limited warranty does not apply to any part of the goods which has been subjected to improper or abnormal use, negligence, alteration, modification, or accident, damaged due to lack of maintenance or use of wrong fuel, oil, or lubricants, or which has served its normal life. This limited warranty does not apply to any part of any internal combustion engine, or expendable items such as blades, shields, guards, or pneumatic tires except as specifically found in your Operator's Manual.
- 1.04. Except as provided herein, no employee, agent, Dealer, or other person is authorized to give any warranties of any nature on behalf of Manufacturer.

2. REMEDIES AND PROCEDURES.

- 2.01. This limited warranty is not effective unless the Purchaser returns the Registration and Warranty Form to Manufacturer within 30 days of purchase.
- 2.02. Purchaser claims must be made in writing to the Authorized Dealer ("Dealer") from whom Purchaser purchased the goods or an approved Authorized Dealer ("Dealer") within 30 days after Purchaser learns of the facts on which the claim is based.
- 2.03. Purchaser is responsible for returning the goods in question to the Dealer.
- 2.04. If after examining the goods and/or parts in question, Manufacturer finds them to be defective under normal use and service due to defects in material or workmanship, Manufacturer will:
 - (a) Repair or replace the defective goods or part(s) or
 - (b) Reimburse Purchaser for the cost of the part(s) and reasonable labor charges (as determined by Manufacturer) if Purchaser paid for the repair and/or replacement prior to the final determination of applicability of the warranty by Manufacturer.The choice of remedy shall belong to Manufacturer.
- 2.05. Purchaser is responsible for any labor charges exceeding a reasonable amount as determined by Manufacturer and for returning the goods to the Dealer, whether or not the claim is approved. Purchaser is responsible for the transportation cost for the goods or part(s) from the Dealer to the designated factory.

3. LIMITATION OF LIABILITY.

- 3.01. MANUFACTURER DISCLAIMS ANY EXPRESS (EXCEPT AS SET FORTH HEREIN) AND IMPLIED WARRANTIES WITH RESPECT TO THE GOODS INCLUDING, BUT NOT LIMITED TO, MERCHANTABILITY AND FITNESS FOR A PARTICULAR PURPOSE.
- 3.02. MANUFACTURER MAKES NO WARRANTY AS TO THE DESIGN, CAPABILITY, CAPACITY, OR SUITABILITY FOR USE OF THE GOODS.
- 3.03. EXCEPT AS PROVIDED HEREIN, MANUFACTURER SHALL HAVE NO LIABILITY OR RESPONSIBILITY TO PURCHASER OR ANY OTHER PERSON OR ENTITY WITH RESPECT TO ANY LIABILITY, LOSS, OR DAMAGE CAUSED OR ALLEGED TO BE CAUSED DIRECTLY OR INDIRECTLY BY THE GOODS INCLUDING, BUT NOT LIMITED TO, ANY INDIRECT, SPECIAL, CONSEQUENTIAL, OR INCIDENTAL DAMAGES RESULTING FROM THE USE OR OPERATION OF THE GOODS OR ANY BREACH OF THIS WARRANTY. NOTWITHSTANDING THE ABOVE LIMITATIONS AND WARRANTIES, MANUFACTURER'S LIABILITY HEREUNDER FOR DAMAGES INCURRED BY PURCHASER OR OTHERS SHALL NOT EXCEED THE PRICE OF THE GOODS.
- 3.04. NO ACTION ARISING OUT OF ANY CLAIMED BREACH OF THIS WARRANTY OR TRANSACTIONS UNDER THIS WARRANTY MAY BE BROUGHT MORE THAN TWO (2) YEARS AFTER THE CAUSE OF ACTION HAS OCCURRED.

4. MISCELLANEOUS.

- 4.01. Proper Venue for any lawsuits arising from or related to this limited warranty shall be only in Guadalupe County, Texas.
- 4.02. Manufacturer may waive compliance with any of the terms of this limited warranty, but no waiver of any terms shall be deemed to be a waiver of any other term.
- 4.03. If any provision of this limited warranty shall violate any applicable law and is held to be unenforceable, then the invalidity of such provision shall not invalidate any other provisions herein.
- 4.04. Applicable law may provide rights and benefits to purchaser in addition to those provided herein.

KEEP FOR YOUR RECORDS

ATTENTION: Purchaser should fill in the blanks below for his reference when buying repair parts and/or for proper machine identification when applying for warranty.

Servis-Rhino Implement Model _____ Serial Number _____

Date Purchased _____ Dealer _____

ATTENTION:
READ YOUR OPERATOR'S MANUAL

RHINO®
1020 S. Sangamon Ave.
Gibson City, IL 60936
800-446-5158
Email: parts@servis-rhino.com





TO THE OWNER/OPERATOR/DEALER

To keep your implement running efficiently and safely, read your manual thoroughly and follow these directions and the Safety Messages in this Manual. The Table of Contents clearly identifies each section where you can easily find the information you need.

The OCCUPATIONAL SAFETY AND HEALTH ACT (1928.51 Subpart C) makes these minimum safety requirements of tractor operators:

REQUIRED OF THE OWNER:

1. Provide a Roll-Over-Protective Structure that meets the requirements of this Standard; and
2. Provide Seatbelts that meet the requirements of this paragraph of this Standard and SAE J4C; and
3. Ensure that each employee uses such Seatbelt while the tractor is moving; and
4. Ensure that each employee tightens the Seatbelt sufficiently to confine the employee to the protected area provided by the ROPS.

REQUIRED OF THE OPERATOR

1. Securely fasten seatbelt if the tractor has a ROPS.
2. Where possible, avoid operating the tractor near ditches, embankments, and holes.
3. Reduce speed when turning, crossing slopes, and on rough, slick, or muddy surfaces.
4. Stay off slopes too steep for safe operation.
5. Watch where you are going - especially at row ends, on roads, and around trees.
6. Do not permit others to ride.
7. Operate the tractor smoothly - no jerky turns, starts, or stops.
8. Hitch only to the drawbar and hitch points recommended by the tractor manufacturer.
9. When the tractor is stopped, set brakes securely and use park lock, if available.



Keep children away from danger all day, every day...



Equip tractors with rollover protection (ROPS) and keep all machinery guards in place...



Please work, drive, play and live each day with care and concern for your safety and that of your family and fellow citizens.



XÜÌ ÁÜFÁÜFGÁÜ àÁÍ ĒG
Ú!ā cāÁMĒÜĒ

ÚDÁ ĒĪ Ú