



RDF10 - RDF12

Rhino Dual Fold Rake

Rev07-15

P/N 5119P

PART'S MANUAL

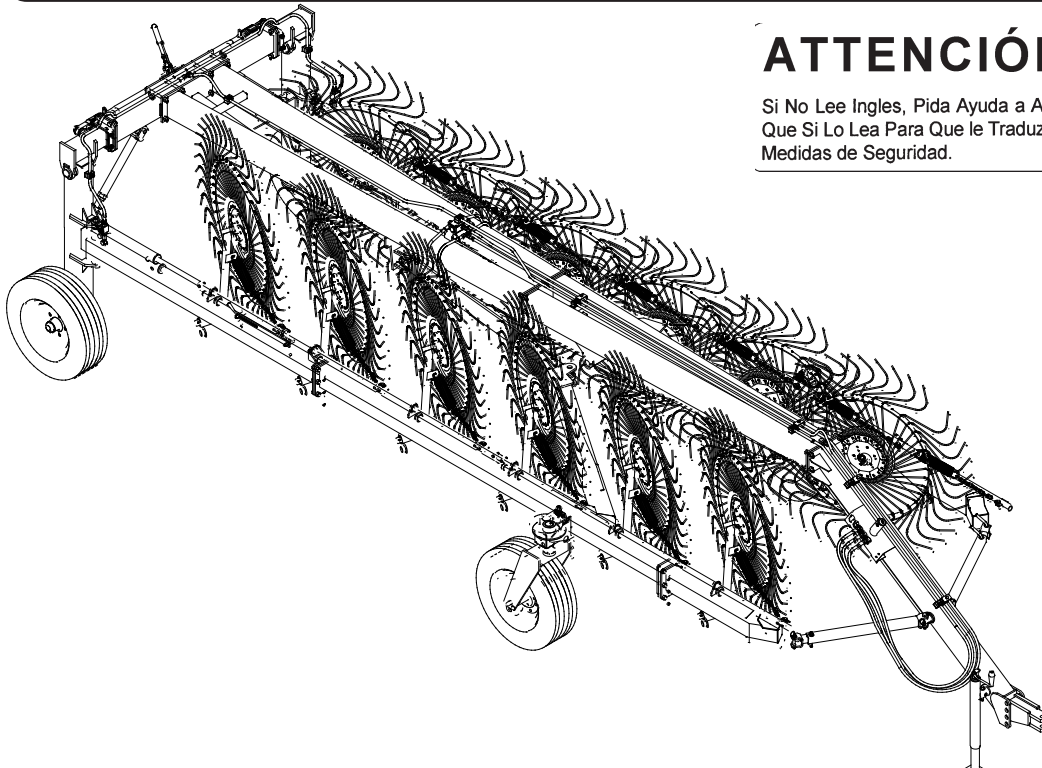


An Operator's Manual was shipped with the equipment in the Manual Canister. This Operator's Manual is an integral part of the safe operation of this machine and must be maintained with the unit at all times. **READ, UNDERSTAND, and FOLLOW** the Safety and Operation Instructions contained in this manual before operating the equipment. If the Operator's Manual is not with the equipment, contact your dealer or M&W (800-446-5158) to obtain a Free copy before operating the equipment.

ATENCIÓN!

LEA EL INSTRUCTIVO

Si No Lee Ingles, Pida Ayuda a Alguien
Que Si Lo Lea Para Que le Traduzca las
Medidas de Seguridad.



1020 South Sangamon Ave.
Gibson City, Illinois 60936
217-784-4261



© 2015 Alamo Group Inc.

TO THE OWNER/OPERATOR/DEALER

All implements with moving parts are potentially hazardous. There is no substitute for a cautious, safe-minded operator who recognizes the potential hazards and follows reasonable safety practices. The manufacturer has designed this implement to be used with all its safety equipment properly attached to minimize the chance of accidents.

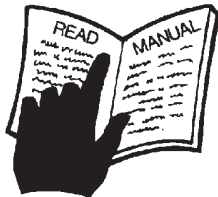
BEFORE YOU START!! Read the safety messages on the implement and shown in your manual.
Observe the rules of safety and common sense!



DANGER

FAILING TO FOLLOW SAFETY MESSAGES AND OPERATING INSTRUCTIONS CAN CAUSE SERIOUS BODILY INJURY OR EVEN DEATH TO OPERATOR AND OTHERS IN THE AREA.

1.



2. NO RIDERS, NO CHILDREN OPERATORS



3. USE SAFETY SHOES, HARD HAT, SAFETY GLASSES, SEAT BELTS, & ROPS



4. BLOCK UP SECURELY BEFORE WORKING UNDER.



1. Study and understand Operator's Manuals, Safety Signs, and Instructional Decals for tractor & flail mower to prevent misuse, abuse, & accidents. Practice before operating mower in a confined area or near passersby.

- Learn how to stop engine suddenly in an emergency. Be alert for passersby and especially children.

2. Allow no children on or near implement or tractor. Allow no riders on tractor or implement. Falling off can cause serious injury or death from being run over by tractor or mower or contact with Flail Mower Blades.

3. Operate only with tractor having Roll-Over Protective Structure (ROPS) and with seatbelt fastened securely and snugly to prevent injury and possible death from falling off or tractor overturn. Personal Protective Equipment such as Hard Hat, Safety Glasses, Safety Shoes, and Ear Plugs are recommended.

4. Block up or support raised machine and all lifted components securely before putting hands or feet under or working underneath any lifted component to prevent crushing injury or death from sudden dropping or inadvertent operation of controls. Make certain that area is clear before lowering or folding.

5. Before transporting, put Lift Lever in detent or full-lift position. Install Transport Safety Devices securely on folding implements. Slow down when turning and on hillsides.

- Install **Restrictor in folding circuit to slow down lowering and unfolding if action is faster than is desirable.

6. Make certain that SMV sign, Warning Lights, and Reflectors are clearly visible. Follow local traffic codes.

7. Never operate with Flail Mower or Folding Section raised if passersby, bystanders or traffic are in the area to reduce possibility of injury or death from objects thrown by Blades under Shields or implement structure.

8. Before dismounting, secure flail mower in transport position or lower to ground.

• Put tractor in park or set brake, disengage PTO, stop engine, remove key, and wait until noise of rotation has ceased to prevent entanglement in rotating parts which may cause injury or death.

- Never mount or dismount a moving vehicle. Crushing from runover may cause injury or death.

5. TRANSPORT SAFELY, LOCK UP.



WARRANTY INFORMATION

6. USE SMV, LIGHTS, & REFLECTORS.



7. DO NOT OPERATE WITH MOWER OR WING RAISED.



8. DO NOT MOUNT OR DISMOUNT WHILE MOVING.



002369

Read and understand the complete Warranty Statement found in this Manual. Fill out the Warranty Registration Form in full and return it within 30 Days. Make certain the Serial Number of the Machine is recorded on the Warranty Card and on the Warranty Form that you retain. The use of "will-fit" parts will void your warranty and can cause catastrophic failure with possible injury or death.

PARTS SECTION

PARTS ORDERING GUIDE

The following instructions are offered to help eliminate needless delay and error in processing purchase orders for the equipment in this section.

1. The Parts Section is prepared in logical sequence and grouping of parts that belong to the basic machine featured in this manual. Part Numbers and Descriptions are given to help locate the parts and quantities required.
2. The Purchase Order must include the name and address of the person or organization ordering the parts, who should be charged, and if possible, the serial number of the machine for which the parts are ordered.
3. The Purchase Order must clearly list the quantity of each part, the complete and correct part number, and the basic name of the part.
4. The Manufacturer reserves the right to substitute parts where applicable.
5. Some parts are unlisted items which are special production items not normally stocked and are subject to special handling. Request a quotation for such parts before sending a Purchase Order.
6. The Manufacturer reserves the right to change prices without prior notice.

NOTE: Please refer to The Safety Section in the front of this Manual for the proper Part Number when ordering Replacement Safety Decals.



For maximum safety and to guarantee optimum product reliability, always use genuine Alamo Group Parts. The use of inferior replacement parts may cause premature or catastrophic failure which could result in serious injury or death. Direct any questions regarding parts to:

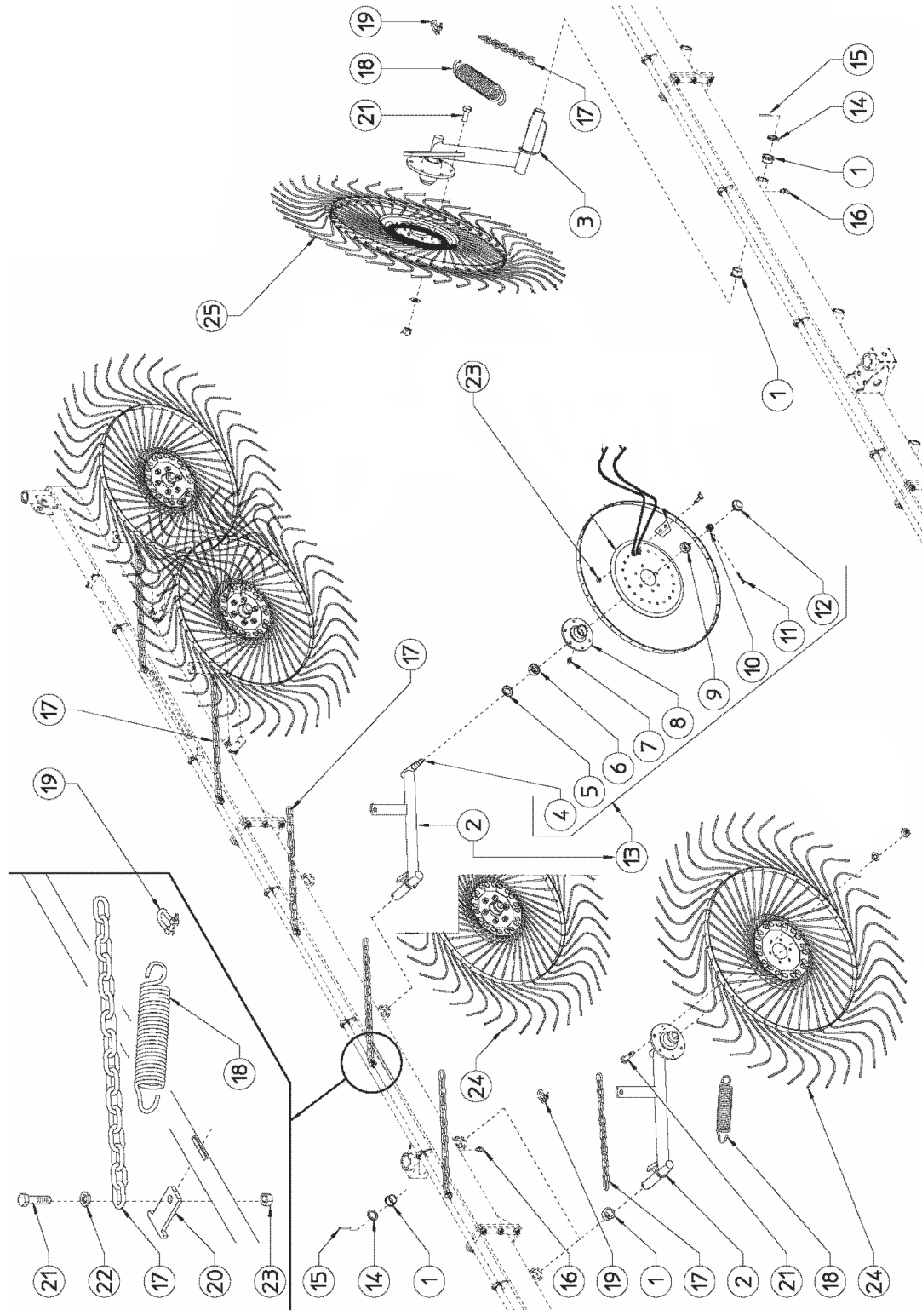


**1020 South Sangamon Ave.
Gibson City, IL 60936
800-446-5158
Email: parts@servis-rhino.com**

PART NAME INDEX

ARMS-WHEELS AND ACCESORIES.....	4
CENTER SECTION AND DRAWBAR.....	6
CYLINDER WITH VALVE AND ACCESORIES.....	9
FRONT SECTION AND DRAWBAR.....	11
HYDRAULIC COMPONENTS - FRONT PARTS.....	13
HYDRAULIC COMPONENTS - REAR PARTS.....	15
RAKE WHEELS - OPTIONAL.....	17
REAR SECTION AND DRAWBAR.....	19
THIRD WHEEL KIT.....	21
WHEELS.....	23

ARMS-WHEELS AND ACCESORIES

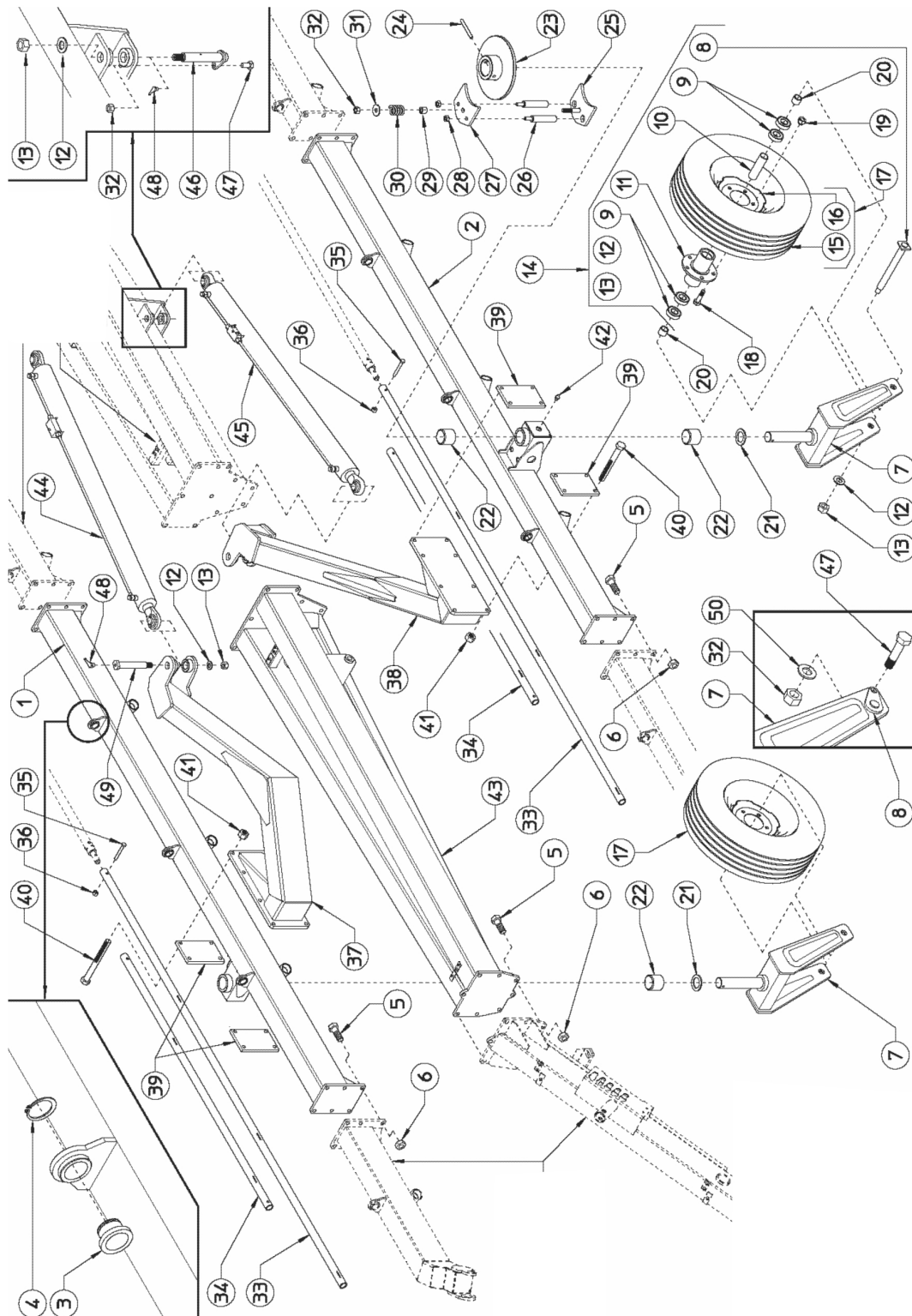


ARMS-WHEELS AND ACCESORIES

Continued...

ITEM	PART NO.	QTY.	DESCRIPTION
1	3637520	20	BUSHING
2	3630283	5	RH ARMS W/HUB
3	3630284	5	LH ARMS W/HUB
4	3637509	10	PIN
5	3736800	10	DUST COVER
6	3736000	10	BEARING 30205
7	2568408	10	GREASE NIPPLE M8
8	3637504	10	HUB
9	3736001	10	BEARING 30204
10	700728C	10	SLOTTED NUT M18X1,5
11	70477	10	SPLIT PIN ø3X30 DIN 94
12	3736700	10	CAP
13	3630100	10	HUB ASSY
14	3638403	10	WASHER ø35-50X5
15	703516W	10	SPLIT PIN ø8X50 DIN 1481
16	3668409	10	GREASE NIPPLE M6X45°
17	3666256	10	CHaine
18	3637422	10	SPRING
19	3668415	10	"D" SACKLES
20	3637548	10	SUPPORT PLATE
21	61368C8	70	SCREW M10X25 DIN 933 8.8
22	3698425	10	WASHER ø11-30X2,5 UNI 6593
23	00765676	210	NUT M10 DIN 980

CENTER SECTION AND DRAWBAR



CENTER SECTION AND DRAWBAR

Continued...

ITEM	PART NO.	QTY.	DESCRIPTION
1	3630268	1	RH SECTION (3 WHEELS)
2	3630269	1	LH SECTION (3 WHEELS)
3	3666780	6	NYLON BUSH ϕ 34,5
4	3698204	6	SNAP RING E42 DIN 471
5	00765901	20	SCREW M16X45 DIN 933 8.8
6	9143007	20	NUT M16 DIN 980
7	3630270	2	WHEEL SUPPORT
8	3630271	2	PIN ϕ 30
9	3636003	8	BEARING 6206 2RS
10	3637537	2	SPACER
11	3637538	2	HUB
12	3638409	6	WASHER ϕ 23-50X4
13	700910C	6	NUT M22 DIN 980
14	3660127	2	HUB ASSY
15	3637800	2	TIRE 205-75
16	3637600	2	WHEEL RIM 6JX15
17	3630103	2	COMPLETE WHEEL 205/75-R15
18	61895C8	10	SCREW M16X1,5 X 40 DIN 961
19	3638406	10	NUT M16X1,5
20	3667517	4	SPACER
21	3668401	2	SHIM ϕ 50-75X5
22	3637521	4	NYLON BUSH ϕ 50-60X50
23	3630229	2	BRAKE FLANGE
24	00756934	2	SPRING PIN ϕ 10X80 DIN 1481
25	3630272	2	BRAKE COUNTERPLATE
26	3637539	4	PIN ϕ 20
27	3637540	2	BRAKE PLATE
28	00765676	4	NUT M10 DIN 980
29	3637541	2	SPACER
30	3637423	2	SPRING ϕ 5- ϕ 30X45
31	3668440	2	WASHER ϕ 12-36X4
32	00772648	6	NUT M12 DIN 980
33	3637542	2	PIPE ϕ 33,7 L.2415-95,08" (RDF12 ONLY)
35	61053C8	2	SCREW M8X45 DIN 931 8.8
36	70093C	2	NUT M8 DIN 980
37	3630273	1	RH ARM
38	3630274	1	LH ARM
39	3637543	4	COUNTERPLATE
40	02967283	16	SCREW M14X140 DIN 931 8.8
41	70096C	16	NUT M14 DIN 980
42	2568408	2	GREASE NIPPLE M8

RDF10 RDF12

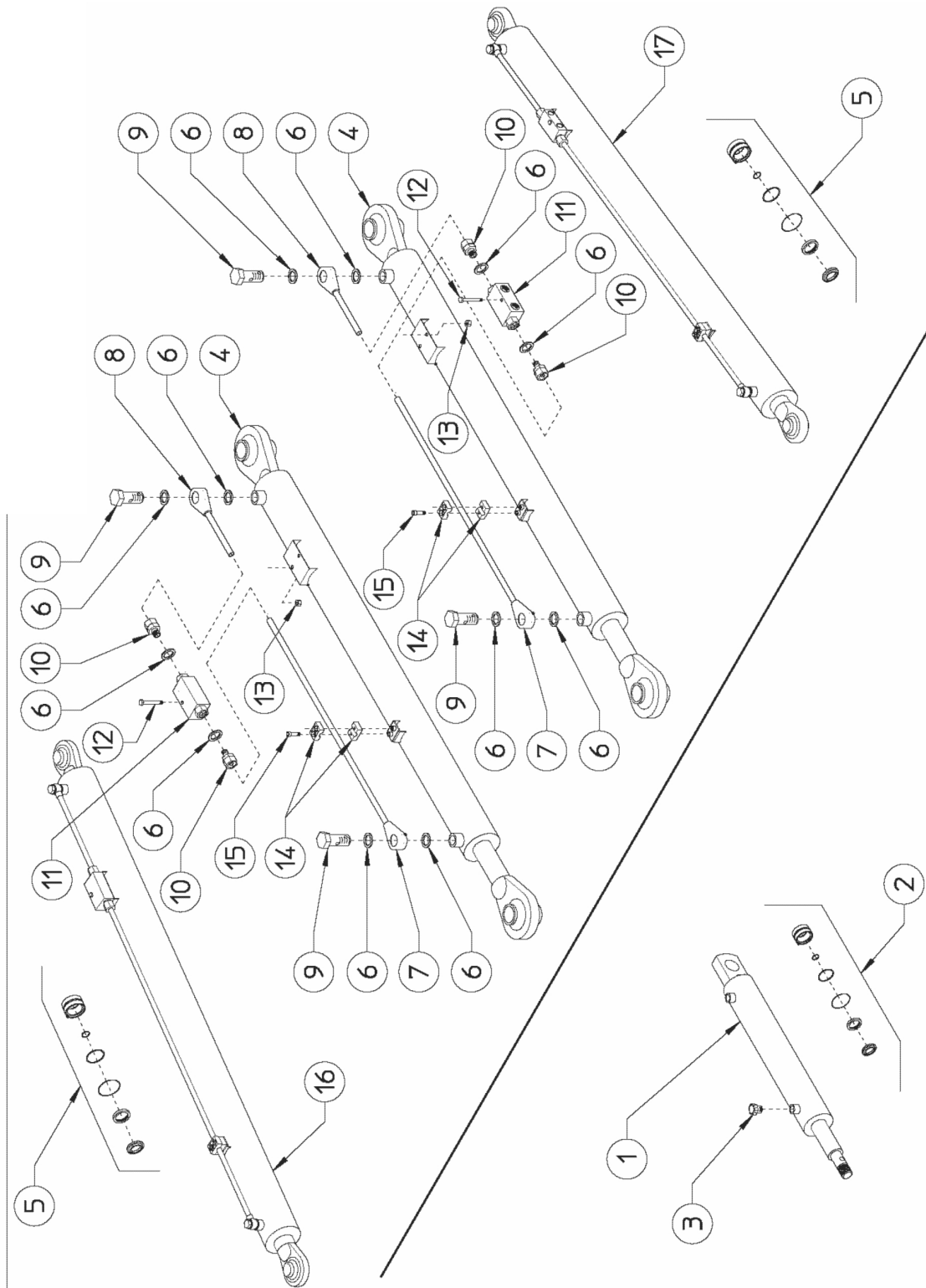
CENTER SECTION AND DRAWBAR

Continued...

ITEM	PART NO.	QTY.	DESCRIPTION
43	3630275	1	DRAWBAR
44	3697131	1	RH CYLINDER WITH VALVE
45	3697132	1	LH CYLINDER WITH VALVE
46	3630276	2	PIN ø30
47	02979380	4	SCREW M12X35 DIN 933 8.8
48	3668409	4	GREASE NIPPLE M6X45°
49	3637544	2	PIN ø30
50	701513C	2	WASHER ø13 DIN 125A

BLANK INTENTIONALLY

CYLINDER WITH VALVE AND ACCESORIES

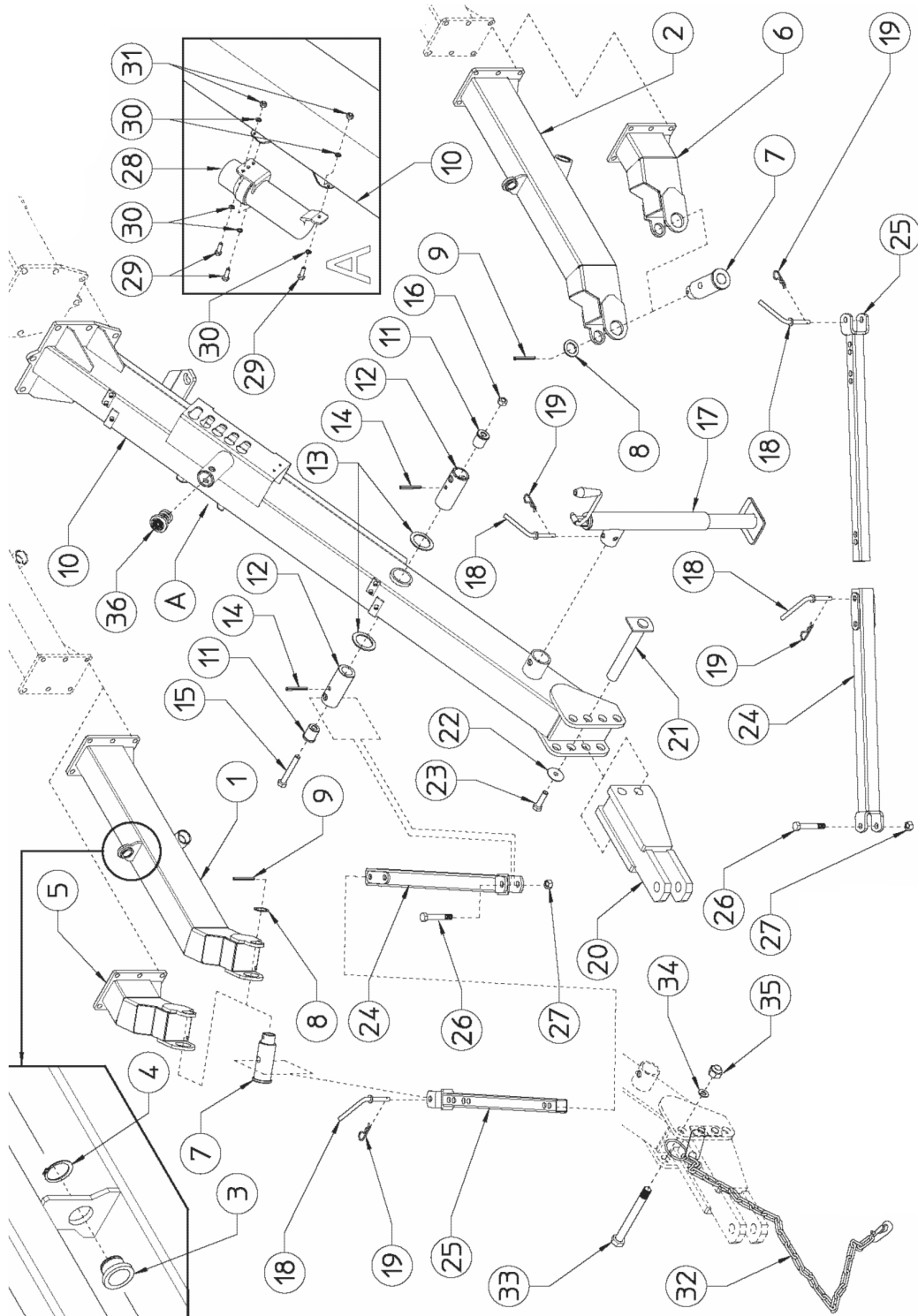


CYLINDER WITH VALVE AND ACCESORIES

Continued...

ITEM	PART NO.	QTY.	DESCRIPTION
1	3697130	2	CYLINDER ø50-30
2	3697135	2	SET OF GASKET ø50-30
3	3668630	2	PLUG 3/8"
4	3697136	2	CYLINDER ø70-45
5	3697137	2	SET OF GASKET ø70-45
6	3678416	12	WASHER ø3/8" BONDED
7	3667102	2	TUBE ø12 L.950-37,4"
8	3667103	2	TUBE ø12 L.200-7,87"
9	3637100	4	SCREW ø3/8"
10	3697114	4	FITTING 3/8"-ø12
11	3667109	2	LOCK VALVE 3/8"
12	61035C8	2	SCREW M6X40 DIN 931
13	70092C	2	NUT M6 DIN 980
14	3668450	4	HOSE COLLAR ø12
15	70786C8	4	SCREW M6X20 DIN 912
16	3697131	1	RH CYLINDER ø70-45 WITH VALVE
17	3697132	1	LH CYLINDER ø70-45 WITH VALVE

FRONT SECTION AND DRAWBAR

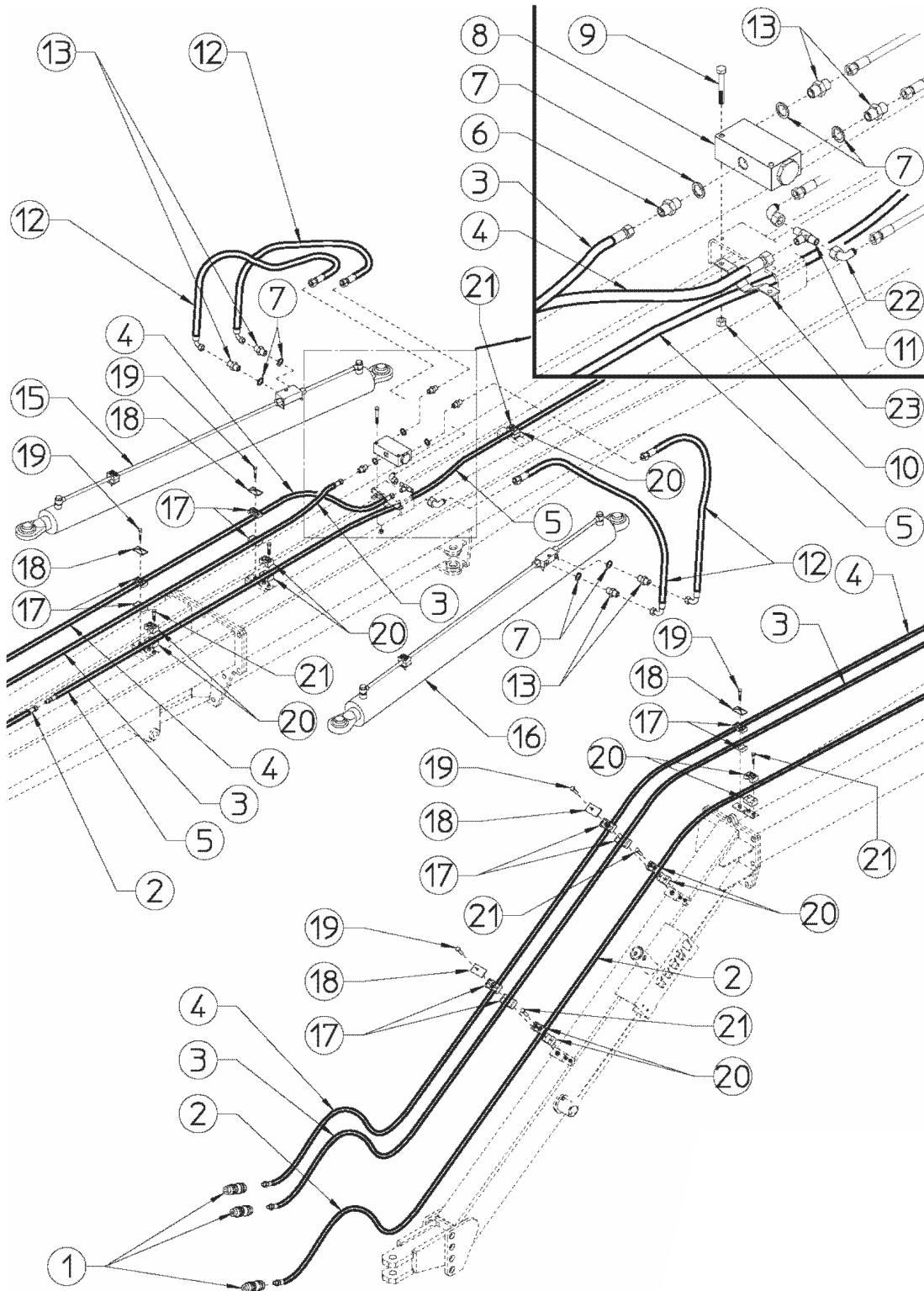


FRONT SECTION AND DRAWBAR

Continued...

ITEM	PART NO.	QTY.	DESCRIPTION
1	3630277	1	RH SECTION (1 WHEEL)
2	3630278	1	LH SECTION (1 WHEEL)
3	3666780	2	NYLON BUSH $\phi 34,5$
4	3698204	2	SNAP RING E42 DIN 471
7	3637545	2	BUSHING
8	3668446	2	SHIM $\phi 39-50X3$
9	703516W	2	SPRING PIN $\phi 8X50$ DIN 1481
10	3630279	1	FRONT DRAWBAR
11	3637546	2	BUSHING
12	3637547	2	BUSHING
13	3668447	2	SHIM $\phi 50,5-70X3$
14	703519W	2	SPRING PIN $\phi 8X70$ DIN 1481 PLATED
15	610712C8	1	SCREW M12X100 DIN 931 8.8
16	00772648	1	NUT M12 DIN 980
17	3668624	1	PARKING STAND
18	3638602	5	PIN $\phi 15$
19	3638400	5	HAIRPIN $\phi 3$
20	3630280	1	TRACTOR HITCH
21	3660235	2	PIN $\phi 25$
22	3668440	2	WASHER $\phi 12-36X4$
23	00762395	2	SCREW M12X20 DIN 933 8.8
24	3630281	2	OUTER ARM
25	3630282	2	INNER ARM
26	00765902	2	SCREW M16X90 DIN 931 8.8
27	9143007	2	NUT M16 DIN 980
28	00776031	1	CANISTER
29	02969728	3	SCREW M6X20 DIN 933 8.8
30	70232C	6	WASHER $\phi 6,6-18X2$
31	70092C	3	NUT M6 DIN 980
32	00757908	1	SAFETY CHAIN
33	02967536	1	SCREW M22X150 DIN 931 8.8
34	701618C	1	SPRING WASHER $\phi 23$ SIMILAR TO DIN 127 B
35	6W238	1	NUT M22 DIN 934
36	3667577	1	PLUG

HYDRAULIC COMPONENTS - FRONT PARTS

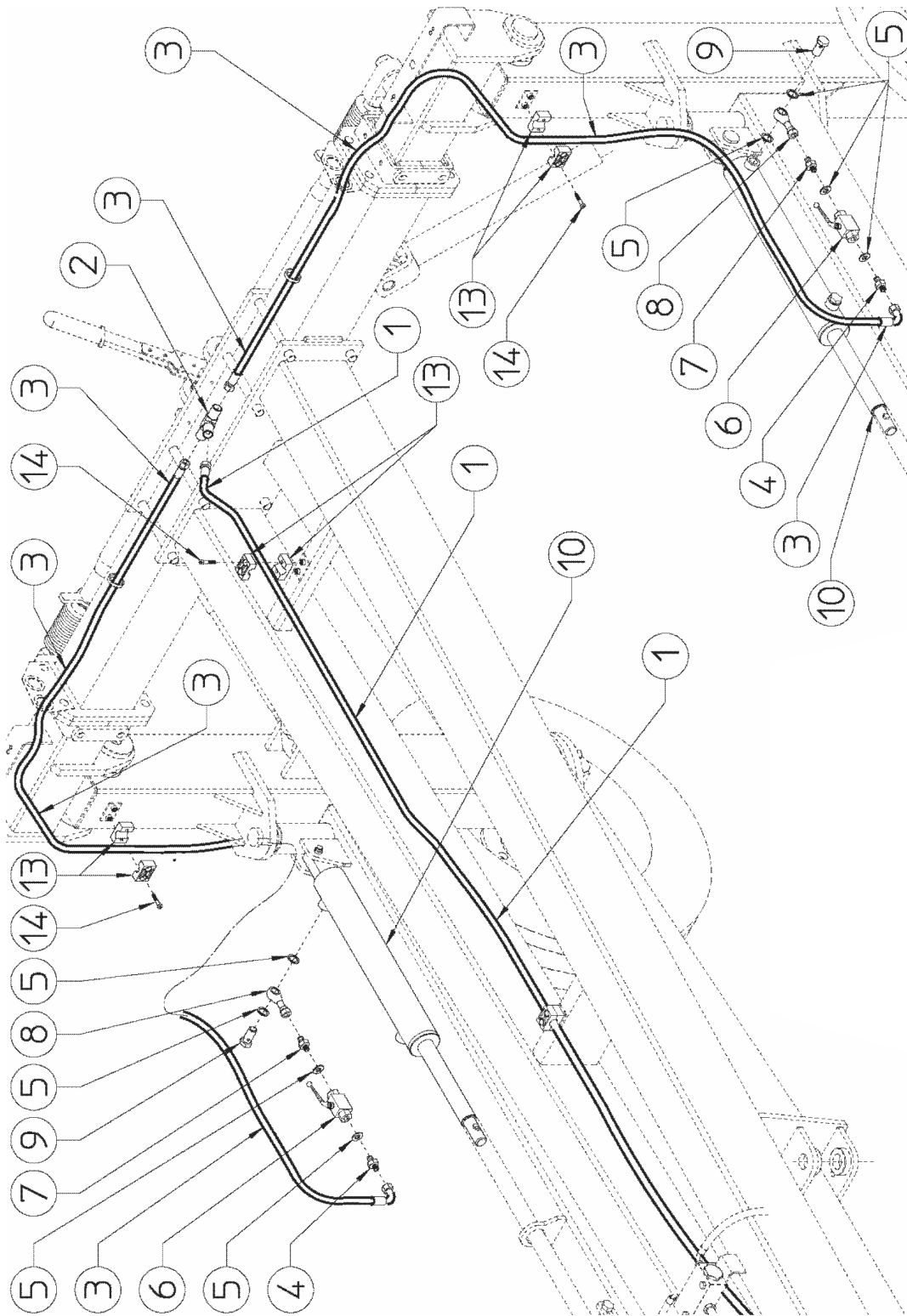


HYDRAULIC COMPONENTS - FRONT PARTS

Continued...

ITEM	PART NO.	QTY.	DESCRIPTION
1	2381	3	RAPID COUPLINGS 1/2" NPTM
2	3667256	1	HOSE 3/8" L.4550-179,13" 1/2" NPTF- M JIC 3/4"
3	3667257	1	HOSE 1/2" L.6500-255,91" 1/2" NPTF- F JIC 7/8"
4	3667258	1	HOSE 1/2" L.6600-259,84" 1/2" NPTF- F JIC 3/4"
5	3667259	1	HOSE 3/8" L.4300-169,29" M JIC 3/4" - F JIC 3/4"
6	3697133	1	NIPPLE JIC 7/8" - 3/8" GAS
7	3678416	7	WASHER ø3/8" BONDED
8	3667110	1	FLOW DIVIDER 3/8"
9	61039C8	2	SCREW M6X60 DIN 931
10	70092C	2	NUT M6 DIN 980
11	2437107	1	"T" FITTING - MALE JIC 3/4"
12	3667260	4	HOSE 3/8" L.750-29,53" F JIC 3/4" - F90° JIC 3/4"
13	3697134	6	NIPPLE 3/8" GAS - JIC 3/4"
15	3697131	1	RH CYLINDER ø70-45 WITH VALVE
16	3697132	1	LH CYLINDER ø70-45 WITH VALVE
17	3668448	10	DOUBLE HOSE COLLAR ø22-22
18	3668449	5	LOCK
19	00762533	5	SCREW M8X45 DIN 933
20	3668424	12	HOSE COLLAR ø18
21	70788C8	12	SCREW M6X25 DIN 912
22	11676	2	FITTING 90° M ¾" JIC – F ¾" JIC
23	3637552	1	HOSE SUPPORT

HYDRAULIC COMPONENTS - REAR PARTS



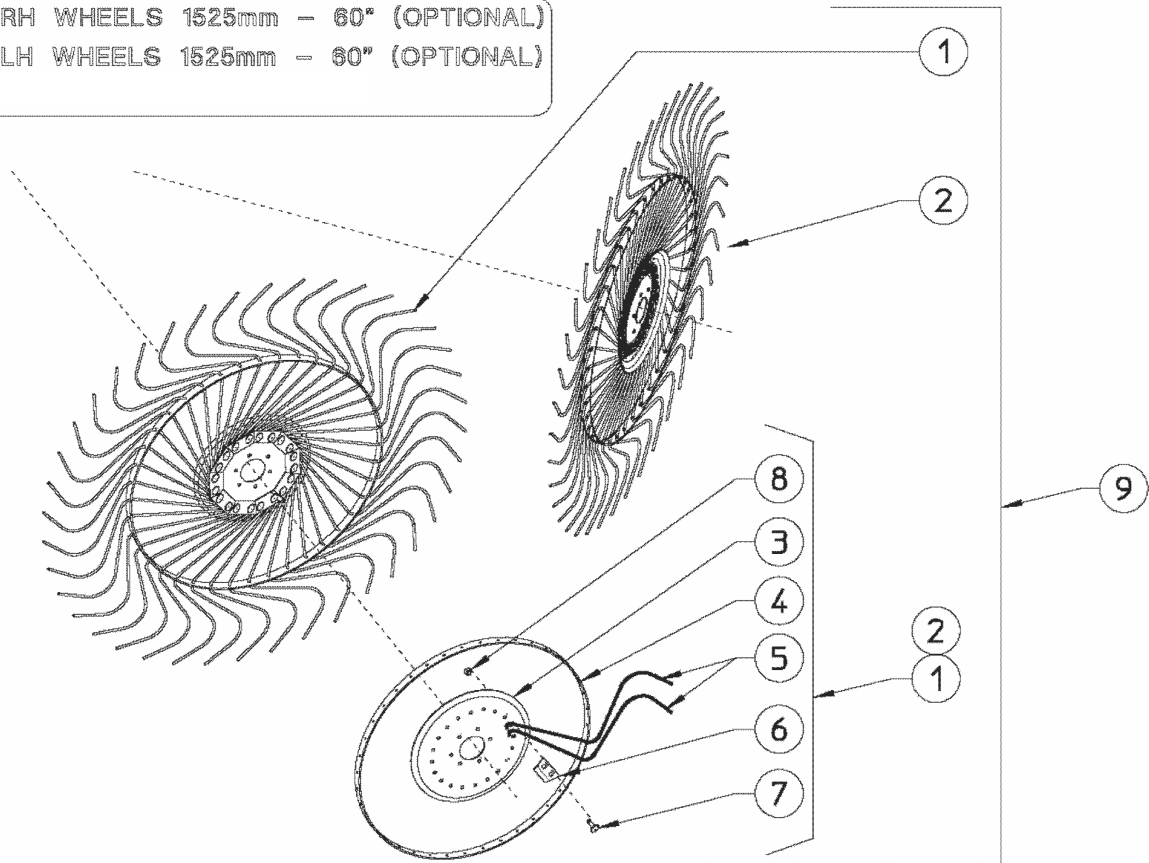
HYDRAULIC COMPONENTS - REAR PARTS

Continued...

ITEM	PART NO.	QTY.	DESCRIPTION
1	3667259	1	HOSE 3/8" L.4300-169,29" M JIC 3/4" - F JIC 3/4"
2	2437107	1	"T" FITTING - MALE JIC 3/4"
3	3667261	2	HOSE 3/8" L.1840-72.44" F JIC 3/4" – F90° JIC 3/4"
4	3697134	2	NIPPLE 3/8" GAS - JIC 3/4"
5	3678416	8	WASHER ϕ 3/8" BONDED
6	3667350	2	VALVE 3/8"
7	3667105	2	NIPPLE 3/8" GAS - 3/8"GAS
8	3697117	2	FITTING BANJO 3/8"
9	3637100	2	SCREW 3/8"
10	3697130	2	CYLINDER ϕ 50-30
13	3668424	6	HOSE COLLAR ϕ 18
14	70788C8	6	SCREW M6X25 DIN 912

RAKE WHEELS - OPTIONAL

N° 6 RH WHEELS 1525mm - 60" (OPTIONAL)
N° 6 LH WHEELS 1525mm - 60" (OPTIONAL)

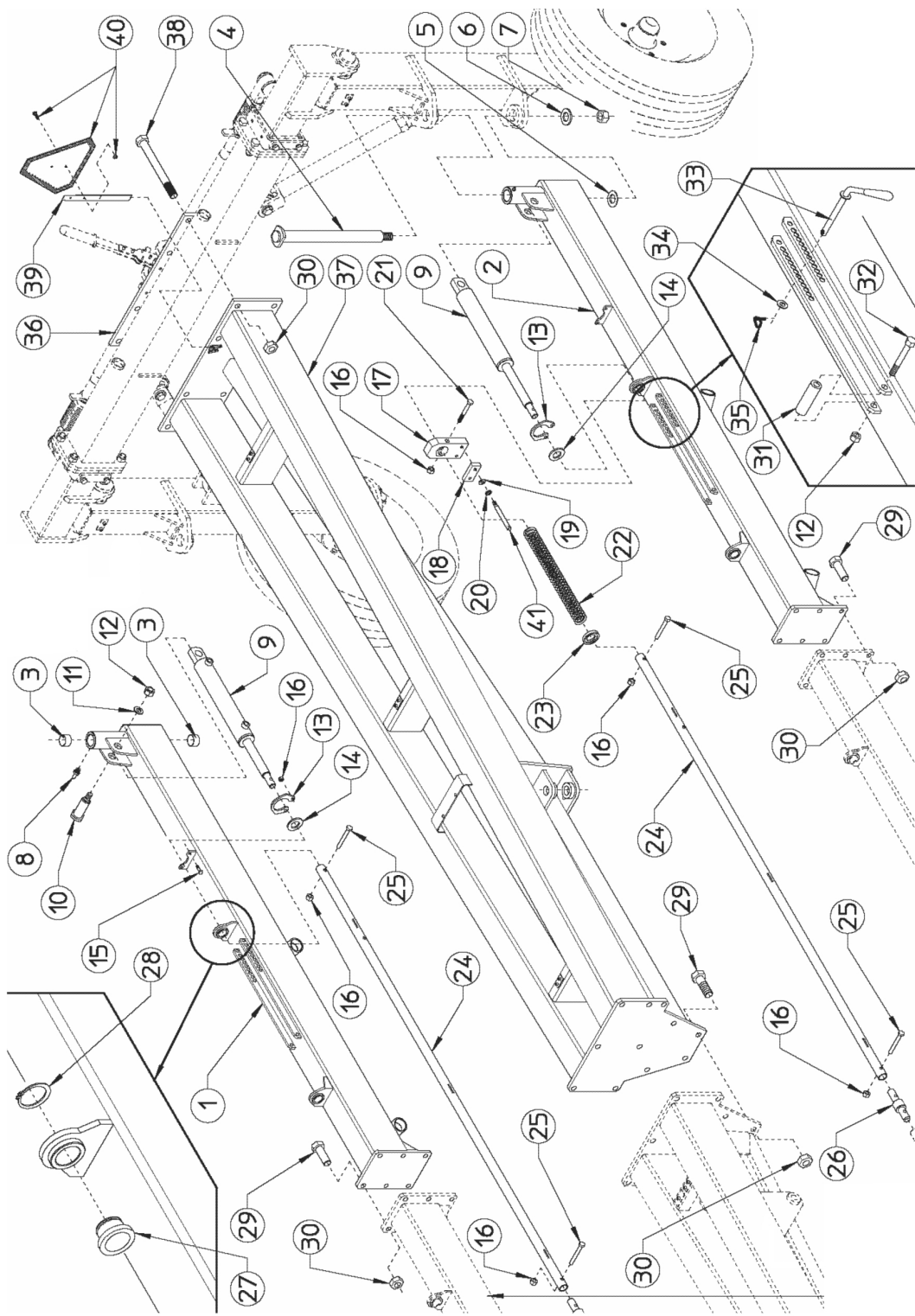


RAKE WHEELS - OPTIONAL

Continued...

ITEM	PART NO.	QTY.	DESCRIPTION
1	3660128	6	RH FINGER WHEEL 60"
2	3660129	6	LH FINGER WHEEL 60"
3	3637549	1	FLANGE
4	3637550	1	RIM
5	3637551	40	TINE ϕ 7,5
6	3637508	10	TINE CLAMP
7	00755949	20	SCREW M10X25 DIN 603
8	00765676	20	NUT M10 DIN 980
9	6B1697	1	RAKE WHEELS KIT 60" FOR RDF/12 OPTIONAL

REAR SECTION AND DRAWBAR

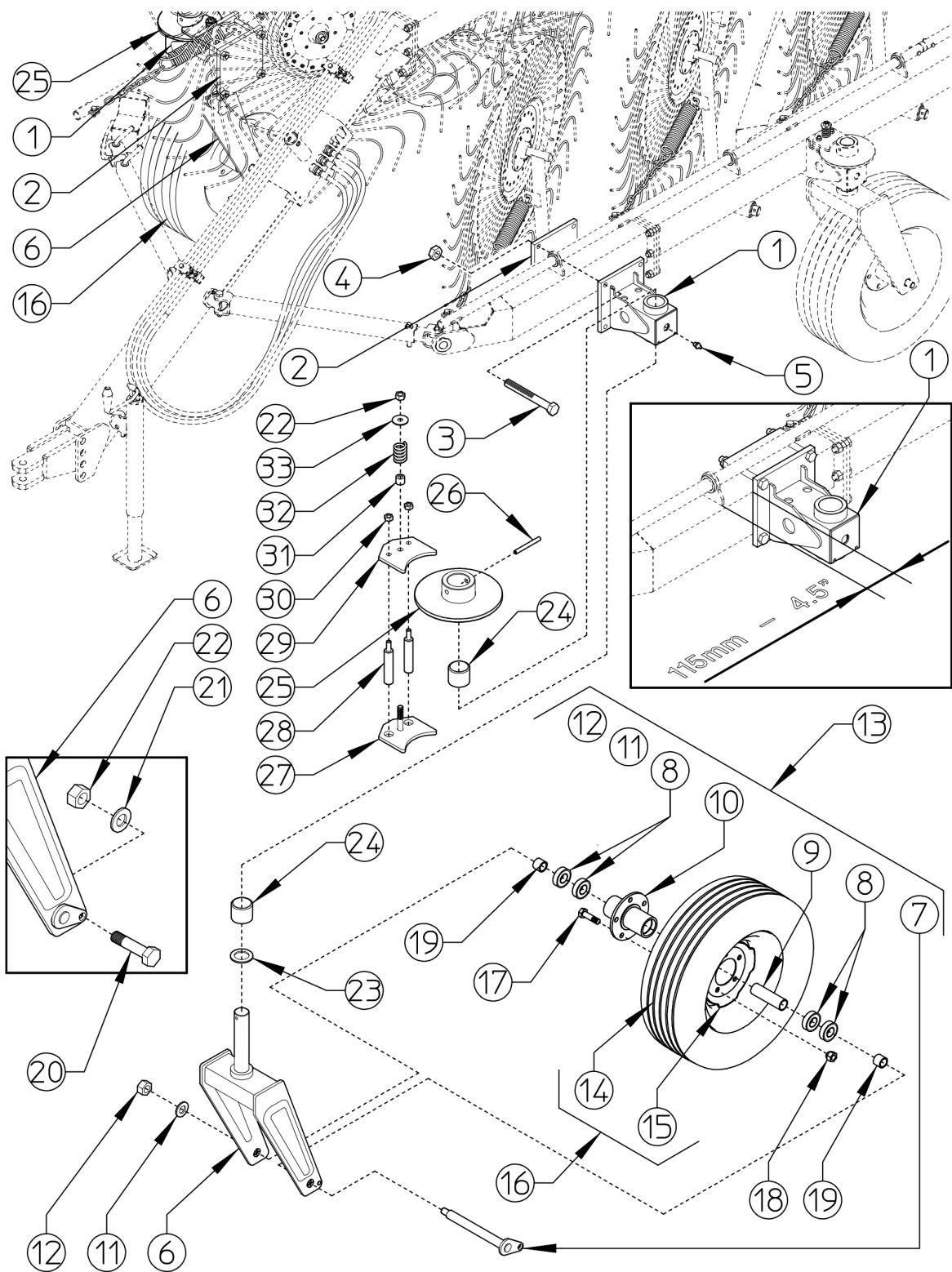


REAR SECTION AND DRAWBAR

Continued...

ITEM	PART NO.	QTY.	DESCRIPTION
1	3630264	1	RH SECTION
2	3630265	1	LH SECTION
3	3697599	4	BUSH ϕ 35-39X30
4	3630266	2	PIN
5	3676901	2	SHIM ϕ 35,2-51,8X1,5
6	3638409	2	WASHER ϕ 23-50X4
7	700910C	2	NUT M22 DIN 980
8	2568408	2	GREASE NIPPLE M8
9	3697130	2	CILINDER ϕ 50-60 ROD ϕ 30
10	3637530	2	PIN ϕ 25
11	3668440	2	WASHER ϕ 12-36X4
12	00772648	4	NUT M12 DIN 980
13	3667594	2	CYLINDER LOCKING PLATE
14	3668442	2	SHIM ϕ 25,25-35X4
15	61358C8	4	SCREW M8X25 DIN 931 8.8
16	70093C	10	NUT M8 DIN 980
17	3637531	2	SUPPORT
18	3637532	2	SLIDING
19	701511C	4	WASHER ϕ 8,4 DIN 125A
20	701611C	4	SPRING WASHER ϕ 8,5 DIN 127B
21	61056C8	2	SCREW M8X60 DIN 931 8.8
22	3667426	2	SPRING ϕ 6 L.600-23,6"
23	3668443	2	BUSH ϕ 34,5-50-60 X 20
24	3637533	2	PIPE ϕ 33,7X4 L.2515-99"
25	61053C8	4	SCREW M8X45 DIN 931 8.8
26	3637534	2	PIN ϕ 25-35
27	3666780	4	NYLON BUSH ϕ 34,5
28	3698204	4	SNAP RING E42 DIN 471
29	00765901	22	SCREW M16X45 DIN 933 8.8
30	9143007	30	NUT M16 DIN 980
31	3668444	2	BUSH ϕ 12,5-20
32	610710C8	2	SCREW M12X85 DIN 931 8.8
33	3668445	2	HANDLE
34	701513C	2	WASHER ϕ 13 DIN 125A
35	3668413	2	SPLIT PIN ϕ 4,5
36	3667584	1	DRAWBAR COUNTERPLATE
37	3630267	1	REAR DRAWBAR
38	3668432	8	SCREW M16X165 DIN 931 8.8
39	3637535	1	SUPPORT
40	03200347	1	SMV EMBLEME ASAES276.7
41	3637536	4	PIN ϕ 12

THIRD WHEEL KIT

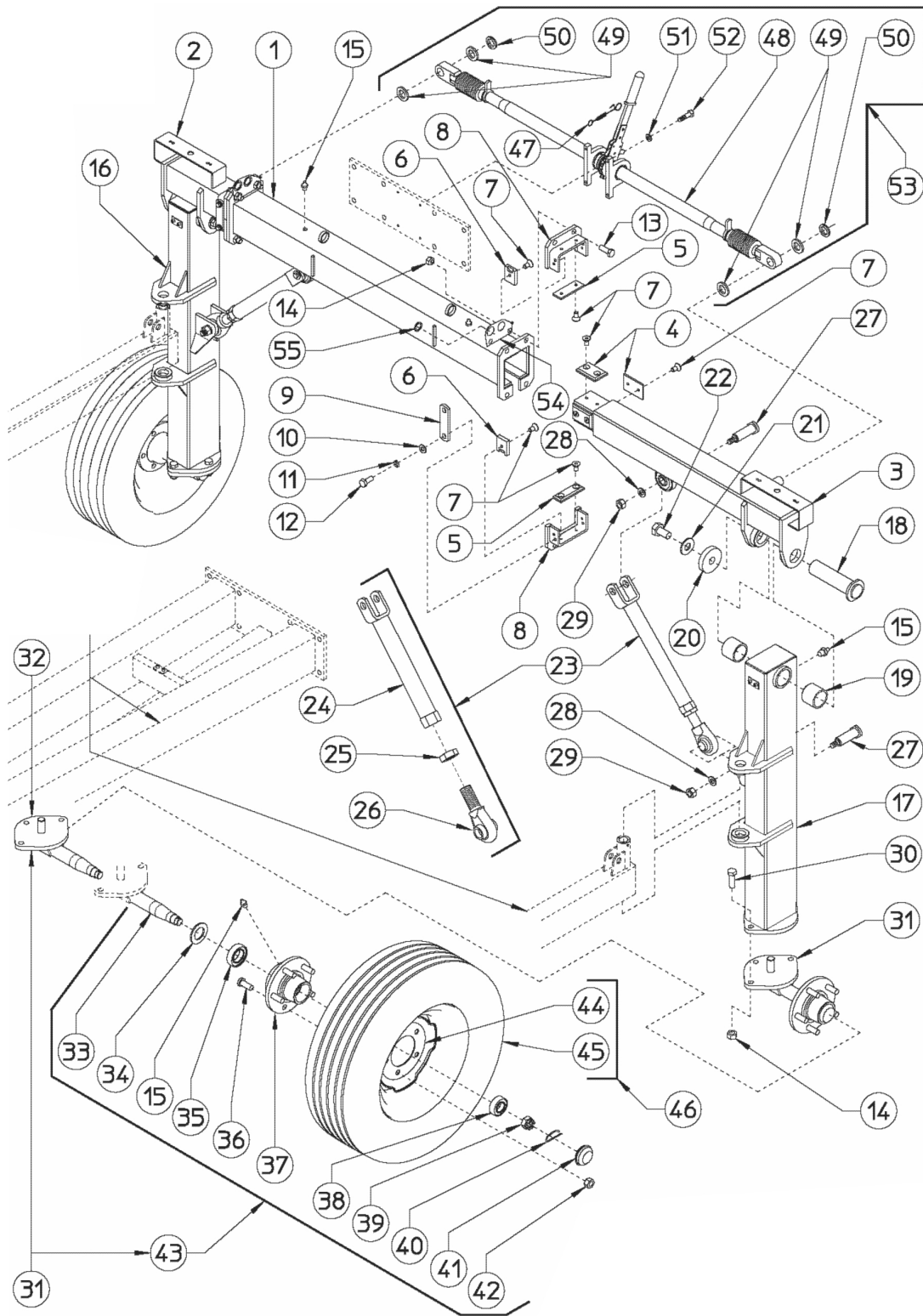


THIRD WHEEL KIT

Continued...

ITEM	PART NO.	QTY.	DESCRIPTION
1	3630287	2	SUPPORT
2	3637553	2	COUNTERPLATE
3	02967283	8	SCREW M14X140 DIN 931 8.8
4	70096C	8	NUT M14 DIN 980
5	2568408	2	GREASE NIPPLE M8
6	3630270	2	WHEEL SUPPORT
7	3630271	2	PIN ø30
8	3636003	8	BEARING 6206 2RS
9	3637537	2	SPACER
10	3637538	2	HUB
11	3638409	2	WASHER ø23-50X4
12	700910C	2	NUT M22 DIN 980
13	3660127	2	HUB ASSY
14	3637800	2	TIRE 205-75
15	3637600	2	WHEEL RIM 6JX15
16	3630103	2	COMPLETE WHEEL 205/75-R15
17	61895C8	10	SCREW M16X1,5 X 40 DIN 961
18	3638406	10	NUT M16X1,5
19	3667517	4	SPACER
20	02979380	2	SCREW M12X35 DIN 933 8.8
21	701513C	2	WASHER ø13 DIN 125A
22	00772648	4	NUT M12 DIN 980
23	3668401	2	SHIM ø50-75X5
24	3637521	4	NYLON BUSH ø50-60X50
25	3630229	2	BRAKE FLANGE
26	00756934	2	SPRING PIN ø10X80 DIN 1481
27	3630272	2	BRAKE COUNTERPLATE
28	3637539	4	PIN ø20
29	3637540	2	BRAKE PLATE
30	00765676	4	NUT M10 DIN 980
31	3637541	2	SPACER
32	3637423	2	SPRING ø5-ø30X45
33	3668440	2	WASHER ø12-36X4

WHEELS



WHEELS

Continued...

ITEM	PART NO.	QTY.	DESCRIPTION
1	3630251	1	OUTER CROSSPIECE
2	3630256	1	RH CROSSPIECE
3	3630257	1	LH CROSSPIECE
4	3667586	8	SLIDING
5	3667552	4	SLIDING
6	3667557	8	SLIDING
7	71554C8	32	SCREW M8 X 16 DIN 7991 8.8
8	3690219	4	SLIDING SUPPORT
9	3667587	4	LINKING PLATE
10	701512C	8	WASHER D 10,5 DIN 433
11	00755954	8	SPRING WASHER D 10.5 DIN 127B
12	61368C8	8	SCREW M10 X 25 DIN 933 8.8
13	00765901	8	SCREW M16 X 45 DIN 933 8.8
14	9143007	14	NUT M16 DIN 980
15	2568408	6	GREASE NIPPLE M8
16	3630258	1	REAR WHEEL SUPPORT,RH
17	3630259	1	REAR WHEEL SUPPORT,LH
18	3660215	2	PIN ø50
19	3637521	4	NYLON BUSH ø50-60
20	3668400	2	WASHER ø23-75 X 12
21	701618C	2	SPRING WASHER ø23 DIN 127 B
22	61424C8	2	SCREW M22 X 50 DIN 933 8.8
23	3660126	2	TIE ROD, COMPLETE
24	3630260	2	TIE ROD PIPE
25	700139C	2	NUT M30 DIN 936
26	3630261	2	TIE ROD HEAD
27	3697597	4	PIN ø25
28	3668440	4	WASHER ø12-36X4
29	00772648	4	NUT M12 DIN 980
30	02957275	6	SCREW M16 X 50 DIN 933 8.8
31	3630262	2	HUB ASSY
32	3630263	2	FLANGE WITH PIN
33	3697550	2	PIN ONLY
34	3666800	2	DUST COVER
35	3666000	2	BEARING 30208
36	3668414	10	SCREW M16X1,5X50
37	3667505	2	HUB WITH SCREWS
38	3666001	2	BEARING 30206
39	3668408	2	SLOTTED NUT M27 X 1,5
40	70487	2	SPLIT PIN ø3
41	3666700	2	CAP

RDF10 RDF12

WHEELS

Continued...

ITEM	PART NO.	QTY.	DESCRIPTION
42	3638406	10	NUT M16X1,5
43	3660125	2	HUB WITHOUT FLANGE
44	3637600	2	RIM 6JX15
45	3637800	2	TIRE 205/75-15
46	3630103	2	WHEEL ASSY
47	3667424	1	LOCK SPRING
48	3660119	1	RATCHET LINK
49	3668429	4	SHIM ø30,5-50X6
50	3668425	2	LOCK-NUT M30 X 1,5
51	701611C	4	SPRING WASHER ø8,5 DIN 127B
52	613510C8	4	SCREW M8 X 30 DIN 933 8.8
53	3660420	1	RATCHET LINK, COMPLETE KIT
54	3697598	2	HOSE SUPPORT
55	3668441	4	GASKET

SERVIS-RHINO

LIMITED WARRANTY

1. LIMITED WARRANTIES

- 1.01. Servis-Rhino warrants for one year from the purchase date to the original non-commercial, governmental, or municipal purchaser ("Purchaser") and warrants for six months to the original commercial or industrial purchaser ("Purchaser") that the goods purchased are free from defects in material or workmanship.
- 1.02. Manufacturer will replace for the Purchaser any part or parts found, upon examination at one of its factories, to be defective under normal use and service due to defects in material or workmanship.
- 1.03. This limited warranty does not apply to any part of the goods which has been subjected to improper or abnormal use, negligence, alteration, modification, or accident, damaged due to lack of maintenance or use of wrong fuel, oil, or lubricants, or which has served its normal life. This limited warranty does not apply to any part of any internal combustion engine, or expendable items such as blades, shields, guards, or pneumatic tires except as specifically found in your Operator's Manual.
- 1.04. Except as provided herein, no employee, agent, Dealer, or other person is authorized to give any warranties of any nature on behalf of Manufacturer.

2. REMEDIES AND PROCEDURES.

- 2.01. This limited warranty is not effective unless the Purchaser returns the Registration and Warranty Form to Manufacturer within 30 days of purchase.
- 2.02. Purchaser claims must be made in writing to the Authorized Dealer ("Dealer") from whom Purchaser purchased the goods or an approved Authorized Dealer ("Dealer") within 30 days after Purchaser learns of the facts on which the claim is based.
- 2.03. Purchaser is responsible for returning the goods in question to the Dealer.
- 2.04. If after examining the goods and/or parts in question, Manufacturer finds them to be defective under normal use and service due to defects in material or workmanship, Manufacturer will:
 - (a) Repair or replace the defective goods or part(s) or
 - (b) Reimburse Purchaser for the cost of the part(s) and reasonable labor charges (as determined by Manufacturer) if Purchaser paid for the repair and/or replacement prior to the final determination of applicability of the warranty by Manufacturer.The choice of remedy shall belong to Manufacturer.
- 2.05. Purchaser is responsible for any labor charges exceeding a reasonable amount as determined by Manufacturer and for returning the goods to the Dealer, whether or not the claim is approved. Purchaser is responsible for the transportation cost for the goods or part(s) from the Dealer to the designated factory.

3. LIMITATION OF LIABILITY.

- 3.01. MANUFACTURER DISCLAIMS ANY EXPRESS (EXCEPT AS SET FORTH HEREIN) AND IMPLIED WARRANTIES WITH RESPECT TO THE GOODS INCLUDING, BUT NOT LIMITED TO, MERCHANTABILITY AND FITNESS FOR A PARTICULAR PURPOSE.
- 3.02. MANUFACTURER MAKES NO WARRANTY AS TO THE DESIGN, CAPABILITY, CAPACITY, OR SUITABILITY FOR USE OF THE GOODS.
- 3.03. EXCEPT AS PROVIDED HEREIN, MANUFACTURER SHALL HAVE NO LIABILITY OR RESPONSIBILITY TO PURCHASER OR ANY OTHER PERSON OR ENTITY WITH RESPECT TO ANY LIABILITY, LOSS, OR DAMAGE CAUSED OR ALLEGED TO BE CAUSED DIRECTLY OR INDIRECTLY BY THE GOODS INCLUDING, BUT NOT LIMITED TO, ANY INDIRECT, SPECIAL, CONSEQUENTIAL, OR INCIDENTAL DAMAGES RESULTING FROM THE USE OR OPERATION OF THE GOODS OR ANY BREACH OF THIS WARRANTY. NOTWITHSTANDING THE ABOVE LIMITATIONS AND WARRANTIES, MANUFACTURER'S LIABILITY HEREUNDER FOR DAMAGES INCURRED BY PURCHASER OR OTHERS SHALL NOT EXCEED THE PRICE OF THE GOODS.
- 3.04. NO ACTION ARISING OUT OF ANY CLAIMED BREACH OF THIS WARRANTY OR TRANSACTIONS UNDER THIS WARRANTY MAY BE BROUGHT MORE THAN TWO (2) YEARS AFTER THE CAUSE OF ACTION HAS OCCURRED.

4. MISCELLANEOUS.

- 4.01. Proper Venue for any lawsuits arising from or related to this limited warranty shall be only in Guadalupe County, Texas.
- 4.02. Manufacturer may waive compliance with any of the terms of this limited warranty, but no waiver of any terms shall be deemed to be a waiver of any other term.
- 4.03. If any provision of this limited warranty shall violate any applicable law and is held to be unenforceable, then the invalidity of such provision shall not invalidate any other provisions herein.
- 4.04. Applicable law may provide rights and benefits to purchaser in addition to those provided herein.

KEEP FOR YOUR RECORDS

ATTENTION: Purchaser should fill in the blanks below for his reference when buying repair parts and/or for proper machine identification when applying for warranty.

Servis-Rhino Implement Model _____ Serial Number _____

Date Purchased _____ Dealer _____

ATTENTION:
READ YOUR OPERATOR'S MANUAL

RHINO®
1020 S. Sangamon Ave.
Gibson City, IL 60936
800-446-5158
Email: parts@servis-rhino.com





TO THE OWNER/OPERATOR/DEALER

To keep your implement running efficiently and safely, read your manual thoroughly and follow these directions and the Safety Messages in this Manual. The Table of Contents clearly identifies each section where you can easily find the information you need.

The OCCUPATIONAL SAFETY AND HEALTH ACT (1928.51 Subpart C) makes these minimum safety requirements of tractor operators:

REQUIRED OF THE OWNER:

1. Provide a Roll-Over-Protective Structure that meets the requirements of this Standard; and
2. Provide Seatbelts that meet the requirements of this paragraph of this Standard and SAE J4C; and
3. Ensure that each employee uses such Seatbelt while the tractor is moving; and
4. Ensure that each employee tightens the Seatbelt sufficiently to confine the employee to the protected area provided by the ROPS.

REQUIRED OF THE OPERATOR

1. Securely fasten seatbelt if the tractor has a ROPS.
2. Where possible, avoid operating the tractor near ditches, embankments, and holes.
3. Reduce speed when turning, crossing slopes, and on rough, slick, or muddy surfaces.
4. Stay off slopes too steep for safe operation.
5. Watch where you are going - especially at row ends, on roads, and around trees.
6. Do not permit others to ride.
7. Operate the tractor smoothly - no jerky turns, starts, or stops.
8. Hitch only to the drawbar and hitch points recommended by the tractor manufacturer.
9. When the tractor is stopped, set brakes securely and use park lock, if available.



Keep children away from danger all day, every day...



Equip tractors with rollover protection (ROPS) and keep all machinery guards in place...



Please work, drive, play and live each day with care and concern for your safety and that of your family and fellow citizens.

