



PT625H

HAY TEDDER

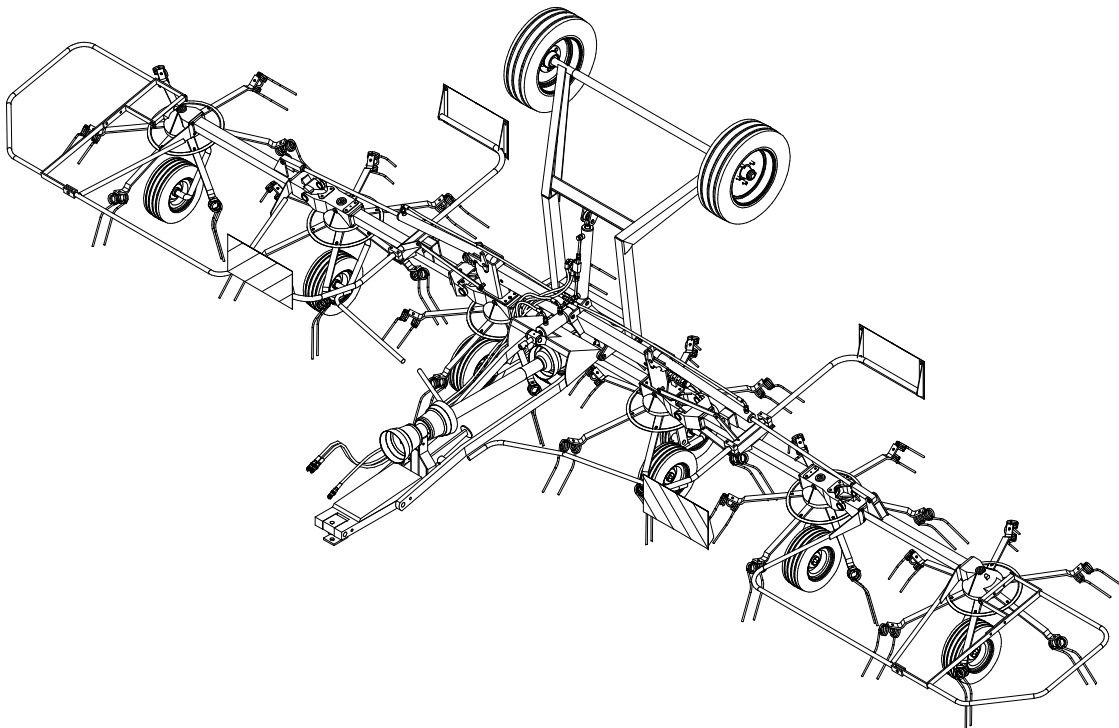
Pub 01/16

Part No. 5121P

PART'S MANUAL



An Operator's Manual was shipped with the equipment in the Manual Canister. This Operator's Manual is an integral part of the safe operation of this machine and must be maintained with the unit at all times. **READ, UNDERSTAND, and FOLLOW** the Safety and Operation Instructions contained in this manual before operating the equipment. If the Operator's Manual is not with the equipment, contact your dealer or M&W (800-446-5158) to obtain a Free copy before operating the equipment.



RHINO®

1020 South Sangamon Ave.
Gibson City, Illinois 60936
217-784-4261

ATENCIÓN!

LEA EL INSTRUCTIVO

Si No Lee Ingles, Pida Ayuda a Alguien
Que Si Lo Lea Para Que le Traduzca las
Medidas de Seguridad.



**A MEMBER OF THE
ALAMO GROUP**
ALWAYS ON THE CUTTING EDGE™

© 2015 Alamo Group Inc.

TO THE OWNER/OPERATOR/DEALER

All implements with moving parts are potentially hazardous. There is no substitute for a cautious, safe-minded operator who recognizes the potential hazards and follows reasonable safety practices. The manufacturer has designed this implement to be used with all its safety equipment properly attached to minimize the chance of accidents.

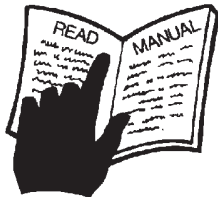
BEFORE YOU START!! Read the safety messages on the implement and shown in your manual.
Observe the rules of safety and common sense!



DANGER

FAILING TO FOLLOW SAFETY MESSAGES AND OPERATING INSTRUCTIONS CAN CAUSE SERIOUS BODILY INJURY OR EVEN DEATH TO OPERATOR AND OTHERS IN THE AREA.

1.



2. NO RIDERS, NO CHILDREN OPERATORS



3. USE SAFETY SHOES, HARD HAT, SAFETY GLASSES, SEAT BELTS, & ROPS



4. BLOCK UP SECURELY BEFORE WORKING UNDER.



1. Study and understand Operator's Manuals, Safety Signs, and Instructional Decals for tractor & flail mower to prevent misuse, abuse, & accidents. Practice before operating mower in a confined area or near passersby.

- Learn how to stop engine suddenly in an emergency. Be alert for passersby and especially children.

2. Allow no children on or near implement or tractor. Allow no riders on tractor or implement. Falling off can cause serious injury or death from being run over by tractor or mower or contact with Flail Mower Blades.

3. Operate only with tractor having Roll-Over Protective Structure (ROPS) and with seatbelt fastened securely and snugly to prevent injury and possible death from falling off or tractor overturn. Personal Protective Equipment such as Hard Hat, Safety Glasses, Safety Shoes, and Ear Plugs are recommended.

4. Block up or support raised machine and all lifted components securely before putting hands or feet under or working underneath any lifted component to prevent crushing injury or death from sudden dropping or inadvertent operation of controls. Make certain that area is clear before lowering or folding.

5. Before transporting, put Lift Lever in detent or full-lift position. Install Transport Safety Devices securely on folding implements. Slow down when turning and on hillsides.

- Install **Restrictor in folding circuit to slow down lowering and unfolding if action is faster than is desirable.

6. Make certain that SMV sign, Warning Lights, and Reflectors are clearly visible. Follow local traffic codes.

7. Never operate with Flail Mower or Folding Section raised if passersby, bystanders or traffic are in the area to reduce possibility of injury or death from objects thrown by Blades under Shields or implement structure.

8. Before dismounting, secure flail mower in transport position or lower to ground.

• Put tractor in park or set brake, disengage PTO, stop engine, remove key, and wait until noise of rotation has ceased to prevent entanglement in rotating parts which may cause injury or death.

- Never mount or dismount a moving vehicle. Crushing from runover may cause injury or death.

5. TRANSPORT SAFELY, LOCK UP.



WARRANTY INFORMATION

6. USE SMV, LIGHTS, & REFLECTORS.



7. DO NOT OPERATE WITH MOWER OR WING RAISED.



8. DO NOT MOUNT OR DISMOUNT WHILE MOVING.



002369

Read and understand the complete Warranty Statement found in this Manual. Fill out the Warranty Registration Form in full and return it within 30 Days. Make certain the Serial Number of the Machine is recorded on the Warranty Card and on the Warranty Form that you retain. The use of "will-fit" parts will void your warranty and can cause catastrophic failure with possible injury or death.

PARTS SECTION

PARTS ORDERING GUIDE

The following instructions are offered to help eliminate needless delay and error in processing purchase orders for the equipment in this section.

1. The Parts Section is prepared in logical sequence and grouping of parts that belong to the basic machine featured in this manual. Part Numbers and Descriptions are given to help locate the parts and quantities required.
2. The Purchase Order must include the name and address of the person or organization ordering the parts, who should be charged, and if possible, the serial number of the machine for which the parts are ordered.
3. The Purchase Order must clearly list the quantity of each part, the complete and correct part number, and the basic name of the part.
4. The Manufacturer reserves the right to substitute parts where applicable.
5. Some parts are unlisted items which are special production items not normally stocked and are subject to special handling. Request a quotation for such parts before sending a Purchase Order.
6. The Manufacturer reserves the right to change prices without prior notice.

NOTE: Please refer to The Safety Section in the front of this Manual for the proper Part Number when ordering Replacement Safety Decals.



For maximum safety and to guarantee optimum product reliability, always use genuine Alamo Group Parts. The use of inferior replacement parts may cause premature or catastrophic failure which could result in serious injury or death. Direct any questions regarding parts to:

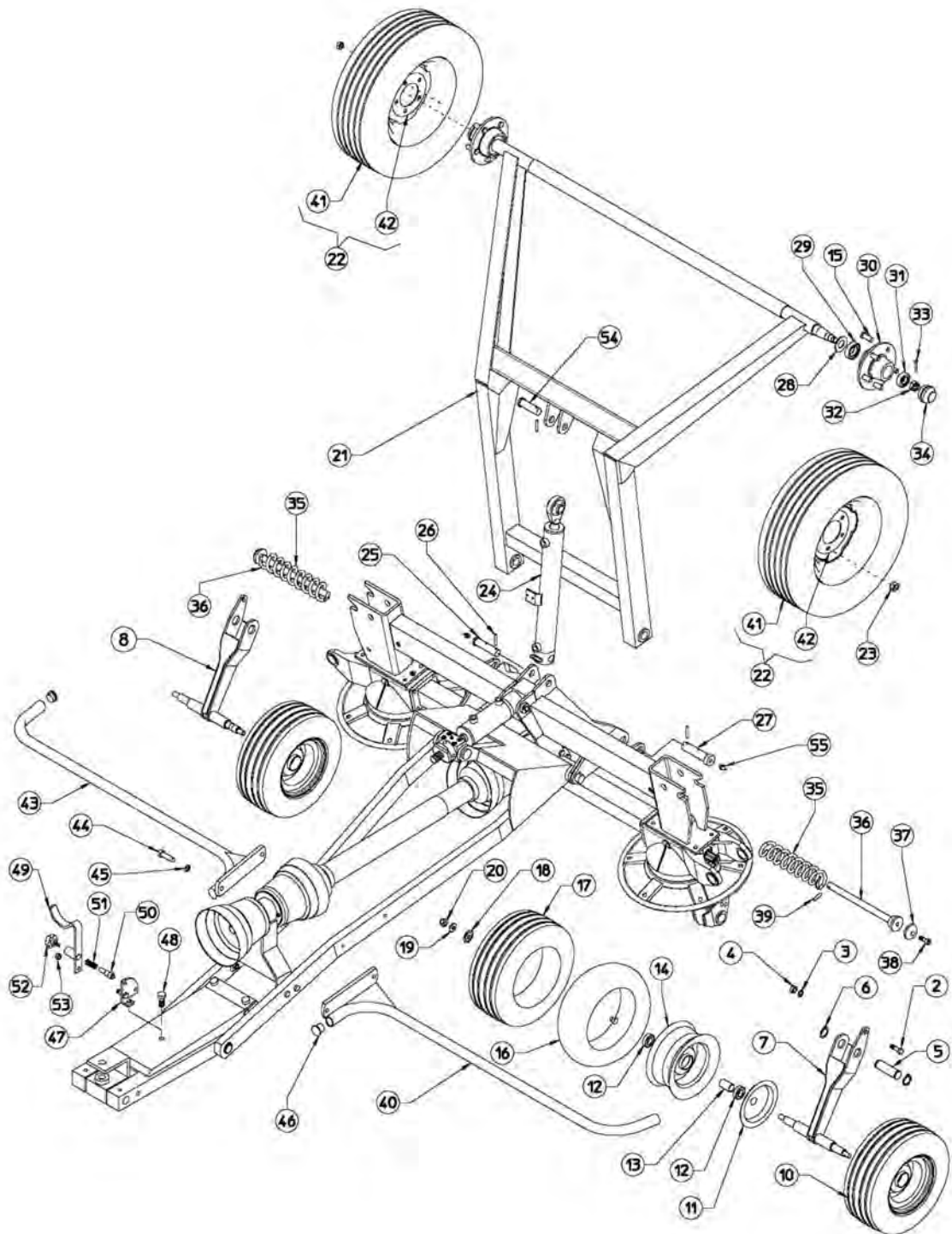


RHINO[®]
1020 South Sangamon Ave.
Gibson City, Illinois 60936
217-784-4561

PART NAME INDEX

CENTER & REAR AXLE ASSEMBLY.....	4
DRIVELINE - CARDAN SHAFT.....	7
HYDRAULIC ASSEMBLY.....	8
LEFT INNER WHEEL ASSEMBLY.....	11
LEFT OUTER WING ASSEMBLY.....	14
RIGHT INNER WHEEL ASSEMBLY.....	17
RIGHT OUTER WING ASSEMBLY.....	21
TONGUE, GEARBOX, & CENTER ASSEMBLY.....	24

CENTER & REAR AXLE ASSEMBLY



CENTER & REAR AXLE ASSEMBLY

Continued...

ITEM	PART NO.	QTY.	DESCRIPTION
2	61091C8	2	SCREW M16 X 50
3	701515C	2	WASHER D 17
4	3038445	2	NUT M16 CL
5	3677525	2	PIN
6	00766021	4	SNAP RING E35
7	3670241	1	L.H. SUPPORT
8	3670242	1	R.H. SUPPORT
10	3670100	4	TIRE ASSY
11	3676700	4	DUST COVER, INNER
12	3676002	8	BEARING 6205-2RS
13	3677514	4	SPACER
14	3677600	4	RIM
15	3668414	10	SCREW M16X1,5
16	3677800	4	TUBE
17	3677801	4	TIRE
18	3676701	4	DUST COVER, OUTER
19	701515C	4	WASHER D.17
20	3038445	4	NUT M16
21	3670243	1	AXLE
22	3630103	2	WHEEL ASSY
23	3638406	10	NUT M16X1,5
24	3677110	1	CYLINDER
25	3670240	1	PIN
26	703516W	3	SPRING PIN D8 X 50
27	3670244	2	PIN
28	3666800	2	DUST COVER
29	3666000	2	BEARING 30208
30	3667505	2	HUB WITH SCREWS
31	3666001	2	BEARING 30206
32	3668408	2	NUT M27X1,5
33	70487	2	SPLIT PIN D 4 X 40 DIN 94 3.6
34	3666700	2	CAP
35	3677425	2	SPRING
36	3670245	2	TIE ROD
37	3677526	2	PLATE
38	70818C8	2	SCREW TCEI M12X35 UNI5931
39	703514W	2	SPRING PIN D8 X 40
40	3670246	1	GUARD
41	3637800	2	TIRE
42	3637600	2	RIM
43	3670247	1	GUARD

PT625H

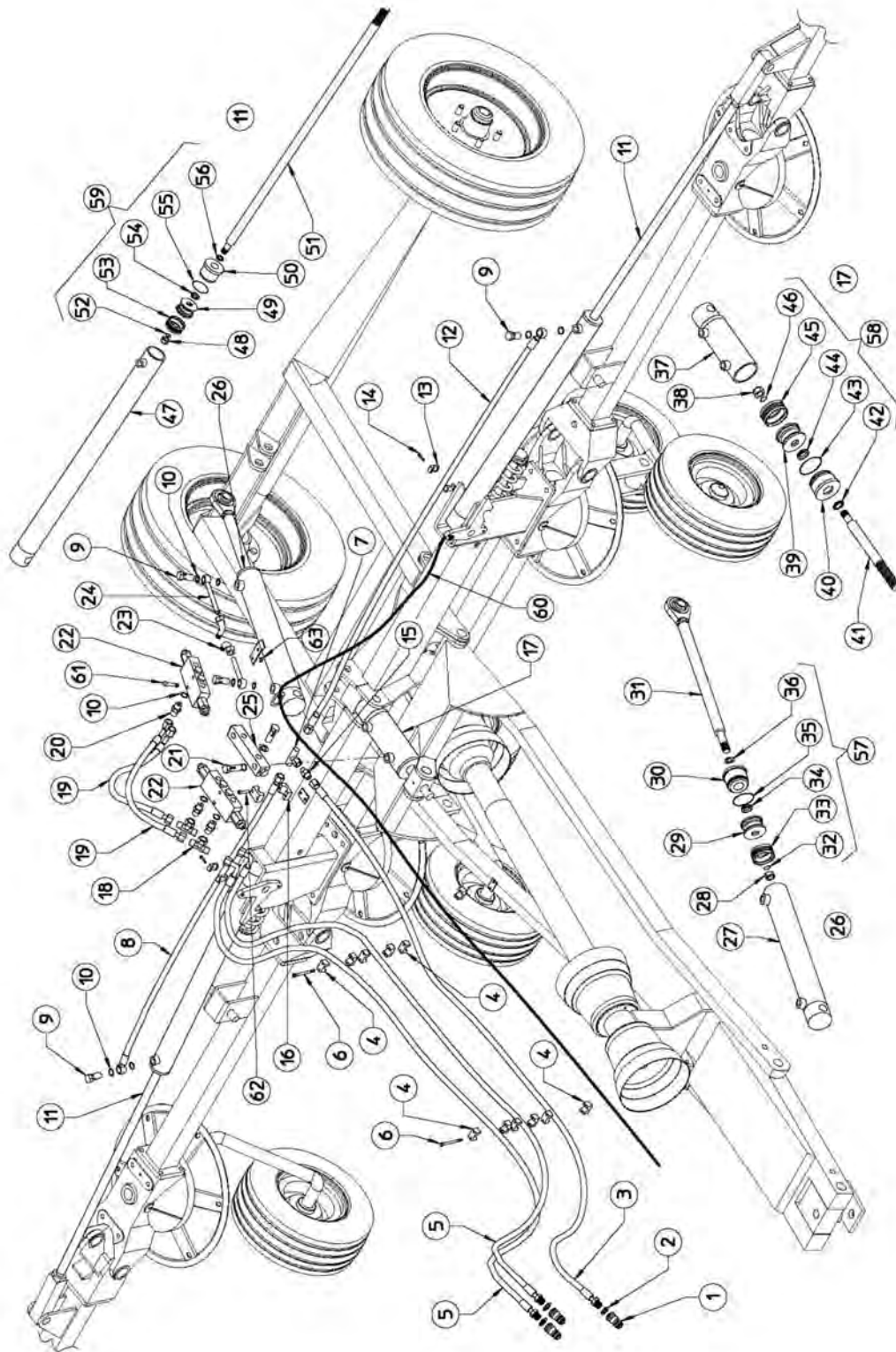
CENTER & REAR AXLE ASSEMBLY

Continued...

ITEM	PART NO.	QTY.	DESCRIPTION
44	02979380	4	SCREW M 12 X 35
45	701613C	4	WASHER D. 13
46	3676780	4	PLUG
47	3670248	1	SUPPORT
48	9313087	1	SCREW M 16 X 40
49	3670249	1	CARDAN SUPPORT
50	3677527	1	PIN
51	3677426	1	SPRING
52	3678604	1	KNOB
53	00772648	1	NUT M12
54	3670250	1	PIN
55	2568408	3	GREASE NIPPLE M8

BLANK INTENTIONALLY

HYDRAULIC ASSEMBLY



HYDRAULIC ASSEMBLY

Continued...

ITEM	PART NO.	QTY.	DESCRIPTION
1	3637102	3	RAPID COUPLING 1/2"
2	3638408	3	COPPER WASHER 1/2"
3	3667223	1	HOSE
4	3668424	12	HOSE COLLAR D.18
5	3677202	2	HOSE
6	707826C8	4	SCREW TCEI 6 X 95
7	3677103	1	FITTING
8	3677203	1	HOSE
9	3637100	4	FITTING
10	3678416	22	COPPER WASHER 3/8"
11	367111	2	CYLINDER
12	3677204	1	HOSE
13	3678404	4	HOSE COLLAR
14	70786C8	4	SCREW TCEI 6 X 20
15	3677104	1	FITTING
16	3668424	2	HOSE COLLAR D.18
17	3677109	1	CYLINDER
18	3667107	2	FITTING
19	3677205	2	HOSE
20	3667105	4	FITTING
21	3677112	4	FITTING
22	3677350	2	VALVE
23	3677113	2	FITTING
24	367114	2	IRON PIPE
25	3677351	1	VALVE
26	3677110	1	CYLINDER
27	3677115	1	CYLINDER PIPE
28	3667196	1	NUT
29	3667195	1	PISTON
30	3667138	1	HEAD
31	3677116	1	ROD
33	3697103	1	GASKET
37	3677117	1	CYLINDER PIPE
38	3667115	1	NUT
39	367118	1	PISTON
40	3677119	1	HEAD
41	3677120	1	ROD
47	3677122	2	CYLINDER PIPE
48	3667115	2	NUT
49	3667114	2	PISTON
50	3667150	2	HEAD

PT625H

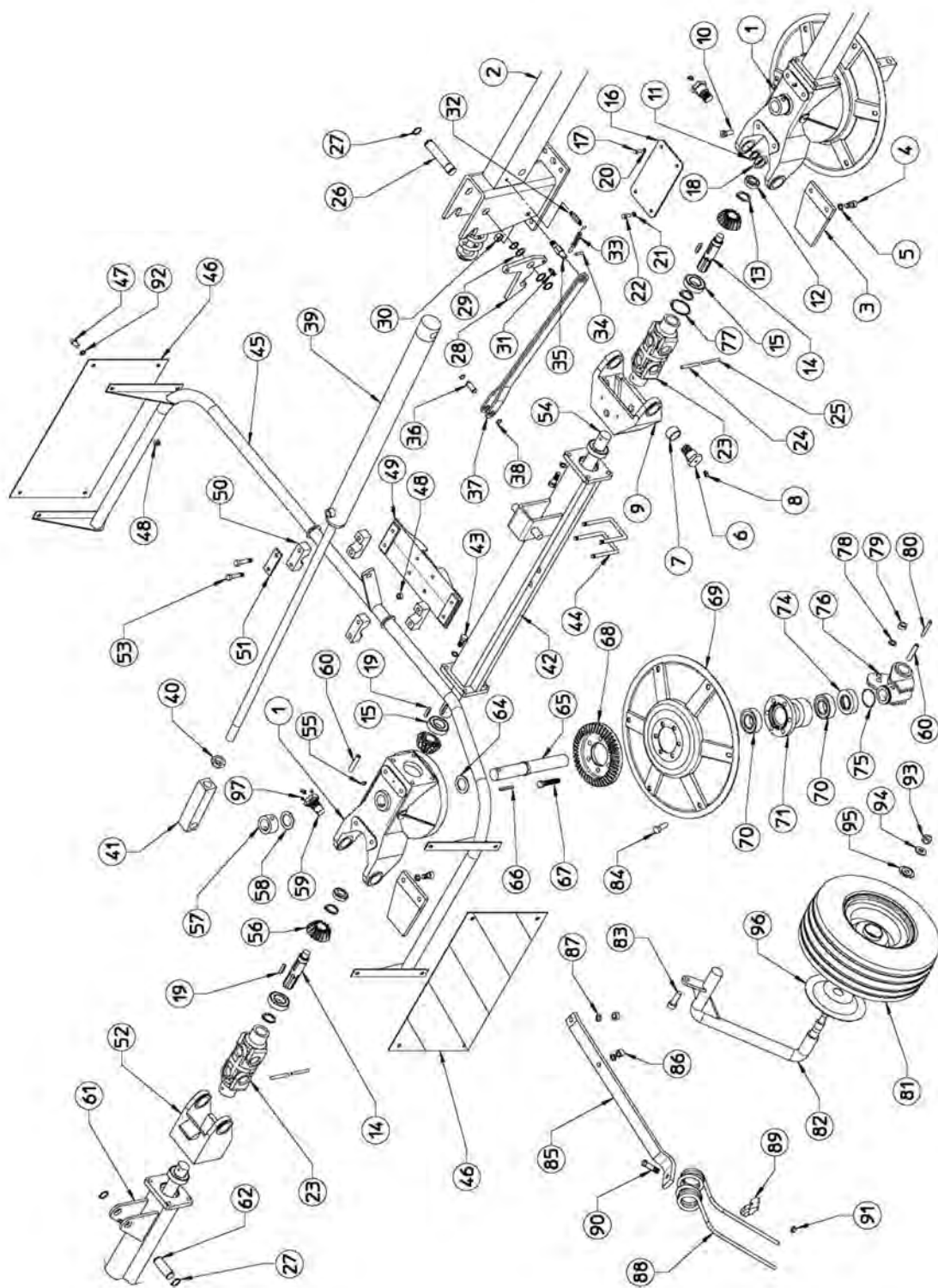
HYDRAULIC ASSEMBLY

Continued...

ITEM	PART NO.	QTY.	DESCRIPTION
51	3677123	2	ROD
57	3667135	1	KIT GASKET
58	3677121	1	KIT GASKET
59	3667142	1	KIT GASKET
60	3678600	2	ROPE
61	613514C8	2	SCREW M 8 X 50
62	613511C8	2	SCREW M 8 X 35
63	70093C	2	NUT M 8 CL

BLANK INTENTIONALLY

RIGHT INNER WHEEL ASSEMBLY



PT625H

RIGHT INNER WHEEL ASSEMBLY

Continued...

ITEM	PART NO.	QTY.	DESCRIPTION
1	3676433	1	GEARBOX
2	3670239	1	CROSSPIECE
3	3677528	2	PLATE
4	61377C8	4	SCREW M12X30
5	701613C	4	WASHER D.13
6	3677529	2	PIN
7	3677530	2	BUSH
8	3668409	4	GREASE NIPPLE M6X 45°
9	3670251	1	FORK
10	3678408	2	SCREW
11	3678410	2	WASHER D.28
12	00764918	2	BEARING 63004 2RS
13	3678205	6	SNAP RING E29
14	3677523	2	SHAFT
15	3636003	5	BEARING 6206 2RS
16	3678701	1	GUARD
17	61333C8	2	SCREW M6X12
18	3678409	2	NUT
19	710636	3	TAP 8X35
20	3698414	2	WASHER D. 6,6
21	701511C	2	WASHER D. 8,4
22	61354C8	2	SCREW M 8 X 16
23	3676417	2	JOINT
24	703616W	2	SPRING PIN D. 10X55
25	703417W	2	SPRING PIN D. 6X55
26	3677531	1	PIN
27	3678201	5	SNAP RING E25
28	3677532	1	RATCHET
29	3678405	2	SHIM
30	70096C	1	NUT M14 CL
31	3677533	1	PIN
32	3674534	1	PIN
33	3677427	1	SPRING
34	70349	1	SPRING PIN D.6 X 26
35	3677535	1	PIN
36	3677536	1	PIN
37	3670252	1	TIE ROD
38	3678202	2	SNAP RING E 16
39	3677111	1	CYLINDER
40	700136C	1	NUT M 24 X 2
41	3677134	1	HEAD

PT625H

RIGHT INNER WHEEL ASSEMBLY

Continued...

ITEM	PART NO.	QTY.	DESCRIPTION
42	3670253	1	AXLE
43	02959661	8	SCREW M12X35
44	3677537	2	BRACKET
45	3670254	1	LIGHTING BRACKET
46	3677538	2	TACKS REFLECTOR
47	00754764	8	SCREW M10 X 20
48	00765676	12	NUT M10
49	3670255	1	SUPPORT
50	3698416	4	HOSE COLLAR D.35
51	3698417	2	PLATE
52	3670256	1	FORK
53	00766178	4	SCREW M10X70
54	3676446	1	SHAFT
55	001465	1	GREASE NIPPLE M6
56	3676432	3	PINION
57	3676445	1	BUSH
58	3676901	1	SHIM
59	3677539	2	PIN
60	703713W	2	SPRING PIN D. 12 X 55
61	3670257	1	AXLE
62	3677540	1	PIN
64	3676905	1	SHIM
65	3676435	1	PIN
66	710460	1	CAP 6X60
67	613713C8	6	SCREW M12 X60
68	3673436	1	CROWN
69	3676437	1	TINE DISC
70	00754459	2	BEARING 6207 - 2RS
71	3676438	1	HUB
74	3676439	1	BUSH
75	3676903	1	GASKET OR829
76	3670258	1	SUPPORT R.H.
77	3678204	2	SNAP RING I 62
78	701515C	1	WASHER D. 17
79	3038445	1	NUT M 16 CL
80	3678411	1	SPRING PIN D. 7 X 55
81	3670100	1	TIRE ASSY
82	3670259	2	TIRE BRACKET
83	61091C8	1	SCREW M16 X 50
84	00754565	6	SCREW M12 X 35
85	3677565	6	TINE ARM

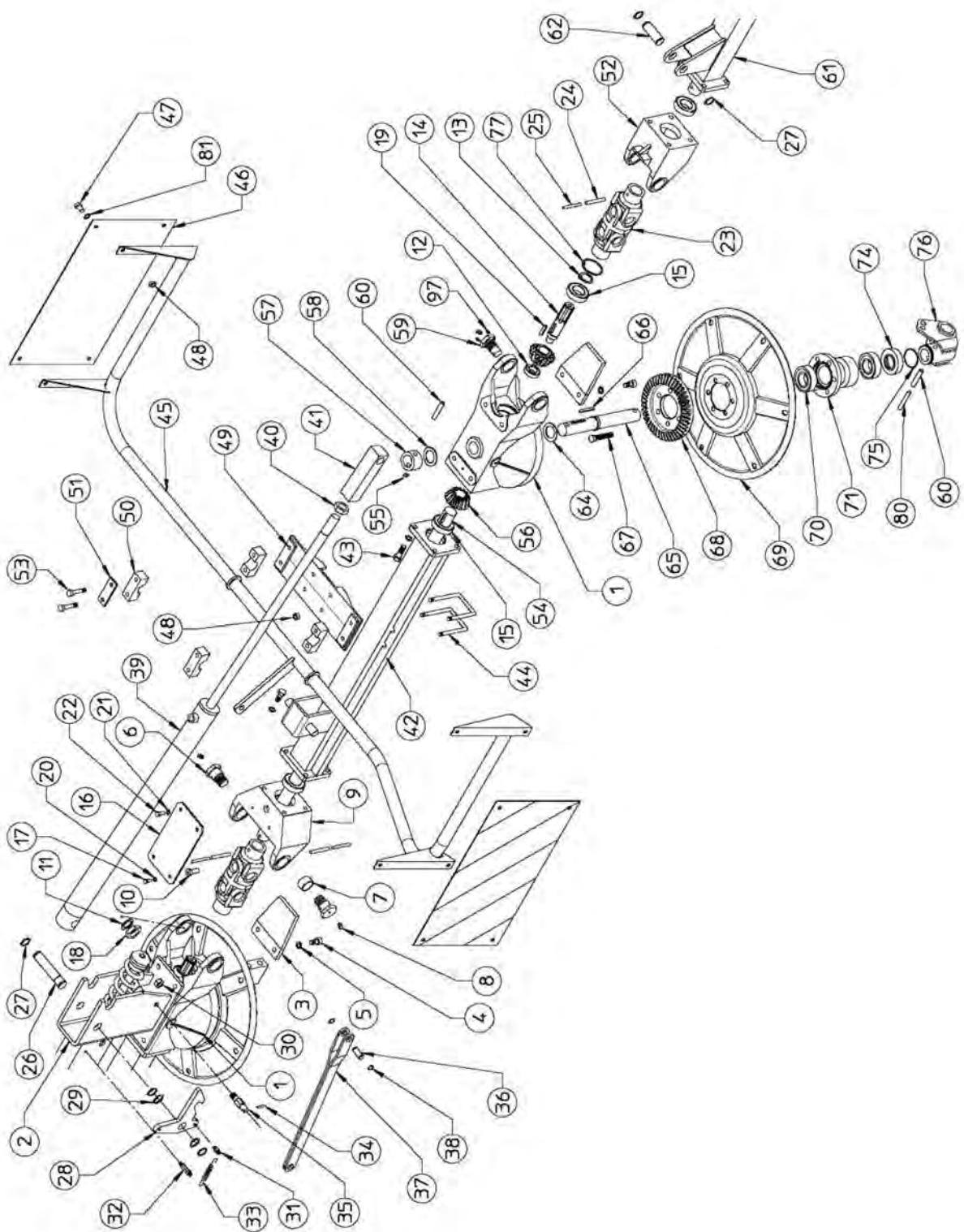
PT625H

RIGHT INNER WHEEL ASSEMBLY

Continued...

ITEM	PART NO.	QTY.	DESCRIPTION
86	00772648	12	NUT M12 CL
87	701613C	12	WASHER D. 13
88	3677428	6	TINE
89	3677558	6	TINE LOCK
90	61084C10	6	SCREW M14 X 60
91	70096C	6	NUT M14 CL
92	701512C	8	WASHER D.11
93	3038445	1	NUT M16
94	701515C	1	WASHER D.17
95	3676701	1	DUST COVER OUTER
96	3676700	1	DUST COVER INNER
97	3668437	4	SCREW M6X10

LEFT INNER WHEEL ASSEMBLY



LEFT INNER WHEEL ASSEMBLY

Continued...

ITEM	PART NO.	QTY.	DESCRIPTION
1	3676433	1	GEARBOX
2	3670239	1	CROSSPIECE
3	3677528	2	PLATE
4	61377C8	4	SCREW M12X30
5	701613C	4	WASHER D.13
6	3677529	2	PIN
7	3677530	2	BUSH
8	3668409	4	GREASE NIPPLE M6X 45°
9	3670251	1	FORK
10	3678408	-	SCREW
11	3678410	2	WASHER D.28
12	00764918	2	BEARING 63004 2RS
13	3678205	6	SNAP RING E29
14	3677523	2	SHAFT
15	3636003	5	BEARING 6206 2RS
16	3678701	1	GUARD
17	61333C8	2	SCREW M6X12
18	3678409	2	NUT
19	710636	3	TAP 8X35
20	3698414	2	WASHER D. 6,6
21	701511C	2	WASHER D. 8,4
22	61354C8	2	SCREW M 8 X 16
23	3676417	2	JOINT
24	703616W	2	SPRING PIN D. 10X55
25	703417W	2	SPRING PIN D. 6X55
26	3677531	1	PIN
27	3678201	5	SNAP RING E25
28	3677532	1	RATCHET
29	3678405	2	SHIM
30	70096C	1	NUT M14 CL
31	3677533	1	PIN
32	3677534	1	PIN
33	3677427	1	SPRING
34	70349	1	SPRING PIN D.6 X 26
35	3677535	1	PIN
36	3677536	1	PIN
37	3670252	1	TIE ROD
38	3678202	2	SNAP RING E 16
39	3677111	1	CYLINDER
40	700136C	1	NUT M 24 X 2
41	3677134	1	HEAD

PT625H

LEFT INNER WHEEL ASSEMBLY

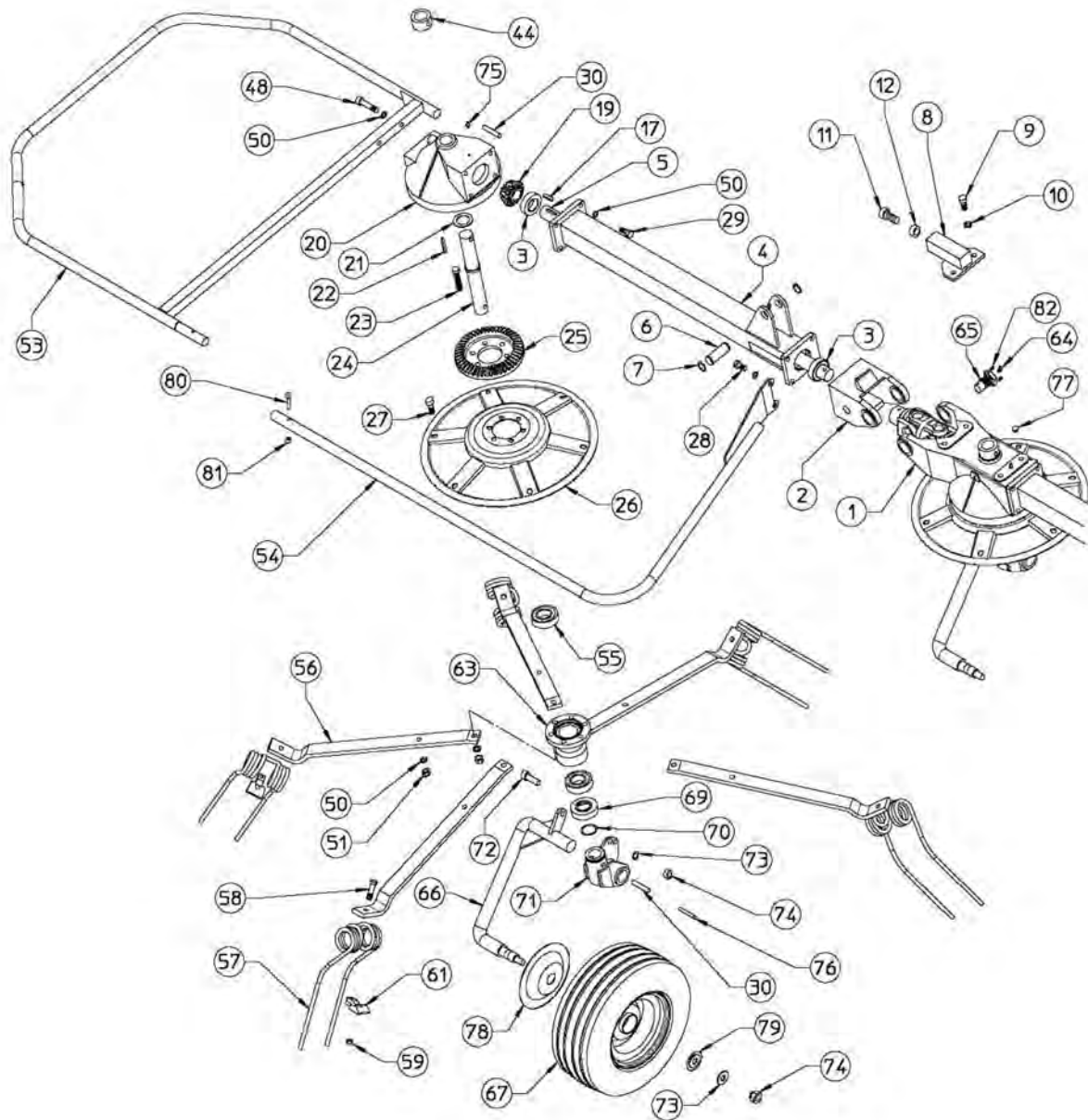
Continued...

ITEM	PART NO.	QTY.	DESCRIPTION
42	3670253	1	AXLE
43	0295661	8	SCREW M12X35
44	3677537	2	BRACKET
45	3670260	1	LIGHTING BRACKET
46	3677538	2	TACKS REFLECTOR
47	00754764	8	SCREW M10 X 20
48	00765676	12	NUT M10
49	3670255	1	SUPPORT
50	3698416	4	HOSE COLLAR D.35
51	3698417	2	PLATE
52	3670256	1	FORK
53	00766178	4	SCREW M10X70
54	3676446	1	SHAFT
55	001465	1	GREASE NIPPLE M6
56	36766432	3	PINION
57	3676445	1	BUSH
58	3676901	1	SHIM
59	3677539	2	PIN
60	703713W	2	SPRING PIN D. 12 X 55
61	3670257	1	AXLE
62	3677540	1	PIN
64	3676905	1	SHIM
65	3676435	1	PIN
66	710460	1	CAP 6X60
67	613713C8	6	SCREW M12 X60
68	3676436	1	CROWN
69	3676437	1	TINE DISC
70	00754459	2	BEARING 6207-2RS
71	3676438	1	HUB
74	3676439	1	BUSH
75	3676903	1	GASKET OR829
76	3670261	1	SUPPORT L.H.
77	3678204	2	SNAP RING I 62
80	3678411	1	SPRING PIN D. 7X55
81	701512C	8	WASHER D.11
97	3668437	4	SCREW M6X10

PT625H

BLANK INTENTIONALLY

RIGHT OUTER WING ASSEMBLY



RIGHT OUTER WING ASSEMBLY

Continued...

ITEM	PART NO.	QTY.	DESCRIPTION
1	3676433	1	GEARBOX
2	3670256	1	FORK
3	3636003	2	BEARING 6206 2RS
4	3670257	1	AXLE
5	3676446	1	SHAFT
6	3677540	1	PIN
7	3678201	2	SNAP RING D. 25
8	3670287	1	SUPPORT
9	00754565	2	SCREW M 12 X 35
10	701613C	2	WASHER D. 13
11	002394	1	SCREW M 20 X 50
12	700229C	1	NUT M 20
17	710636	1	CAP 8 X 35
19	3676432	1	PINION
20	3676447	1	GEARBOX
21	3676905	1	SHIM
22	710460	1	CAP 6 X 60
23	613713C8	6	SCREW M12X60
24	3676435	1	PIN
25	3676436	1	CROWN
26	3676437	1	TINE DISC
27	00754565	6	SCREW M12 X 35
28	9313086	2	SCREW M 12 X 40
29	02959661	6	SCREW M 12 X 35
30	703713W	2	SPRING PIN D 12 X 55
44	3676445	1	BUSH
45	3676901	1	SHIM
48	61073C8	2	SCREW M12 X 50
50	701613C	24	WASHER D. 13
51	00772648	12	NUT M12
53	3670285	1	R.H. GUARD
54	3670283	1	R.H. GUARD
55	00754459	2	BEARING 6207-2RS
56	3677565	6	TINE ARM
57	3677428	6	TINE
58	61084C10	6	SCREW M14 X 60
59	70096C	6	NUT M14
61	3677558	6	TINE LOCK
63	3676438	1	HUB
64	3668409	2	GREASE NIPPLE M6 X 45°
65	3677539	2	PIN

PT625H

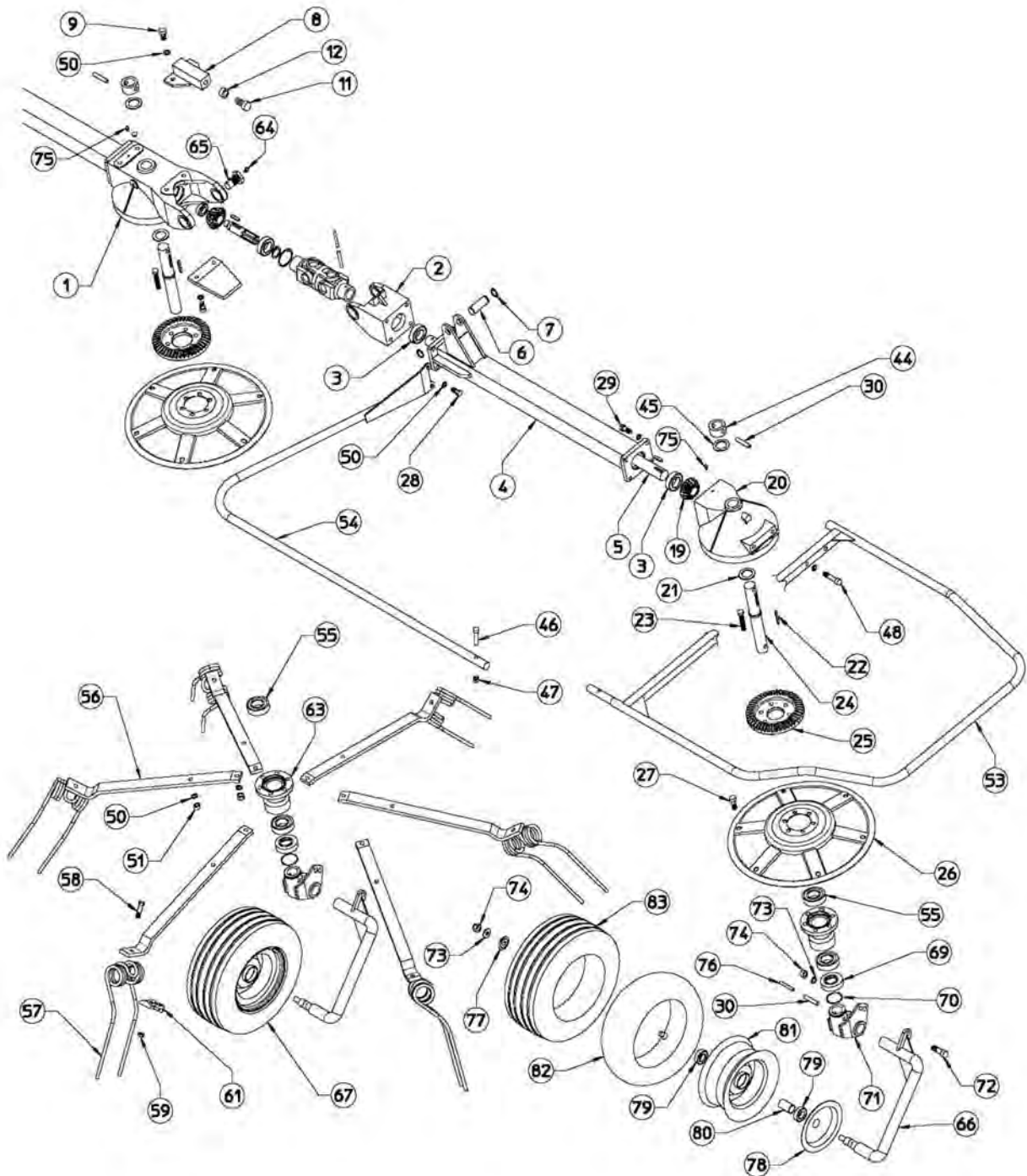
RIGHT OUTER WING ASSEMBLY

Continued...

ITEM	PART NO.	QTY.	DESCRIPTION
66	3670259	1	TIRE BRACKET
67	3670100	1	TIRE ASSY
69	3676439	1	BUSH
70	3676903	1	GASKET OR829
71	3670258	1	SUPPORT R.H.
72	61091C8	1	SCREW M16 X 50
73	701515C	2	WASHER D. 17
74	3038445	2	NUT M16
75	001465	1	GREASE NIPPLE M6
76	3678411	1	SPRING PIN D. 7 X 55
77	3676779	4	PLUG
78	3676700	1	DUST COVER INNER
79	3676701	1	DUST COVER OUTER
80	9213095	1	SCREW M10X45
81	00765676	1	NUT M10
82	3668437	4	SCREW M6X10

BLANK INTENTIONALLY

LEFT OUTER WING ASSEMBLY



LEFT OUTER WING ASSEMBLY

Continued...

ITEM	PART NO.	QTY.	DESCRIPTION
1	3676433	1	GEARBOX
2	3670256	1	FORK
3	3636003	2	BEARING 6206 2RS
4	3670257	1	AXLE
5	3676446	1	SHAFT
6	3677540	1	PIN
7	3678201	2	SNAP RING D. 25
8	3670287	1	SUPPORT
9	00754565	2	SCREW M 12 X 35
11	002394	1	SCREW M 20 X 50
12	700229C	1	NUT M 20
19	3676432	1	PINION
20	3676447	1	GEARBOX
21	3676905	1	SHIM
22	710460	1	CAP 6 X 60
23	613713C8	6	SCREW M12X60
24	3676435	1	PIN
25	3676436	1	CROWN
26	3676437	1	TINE DISC
27	00754565	6	SCREW M12 X 35
28	9313086	2	SCREW M 12 X 40
29	02959661	6	SCREW M 12 X 35
30	703713W	2	SPRING PIN D 12 X 55
44	3676445	1	BUSH
45	3676901	1	SHIM
46	9213095	1	SCREW M10X45
47	00765676	1	NUT M10
48	61073C8	2	SCREW M12 X 50
50	701613C	26	WASHER D. 13
51	00772648	12	NUT M12
53	3670286	1	L.H. GUARD
54	3670284	1	L.H. GUARD
55	00754459	4	BEARING 6207 - 2RS
56	3677565	6	TINE ARM
57	3677428	6	TINE
58	61084C10	6	SCREW M14 X 60
59	70096C	6	NUT M14
61	3677558	6	TINE LOCK
63	3676438	1	HUB
64	3668409	2	GREASE NIPPLE M6 X 45°
65	3677539	2	PIN

PT625H

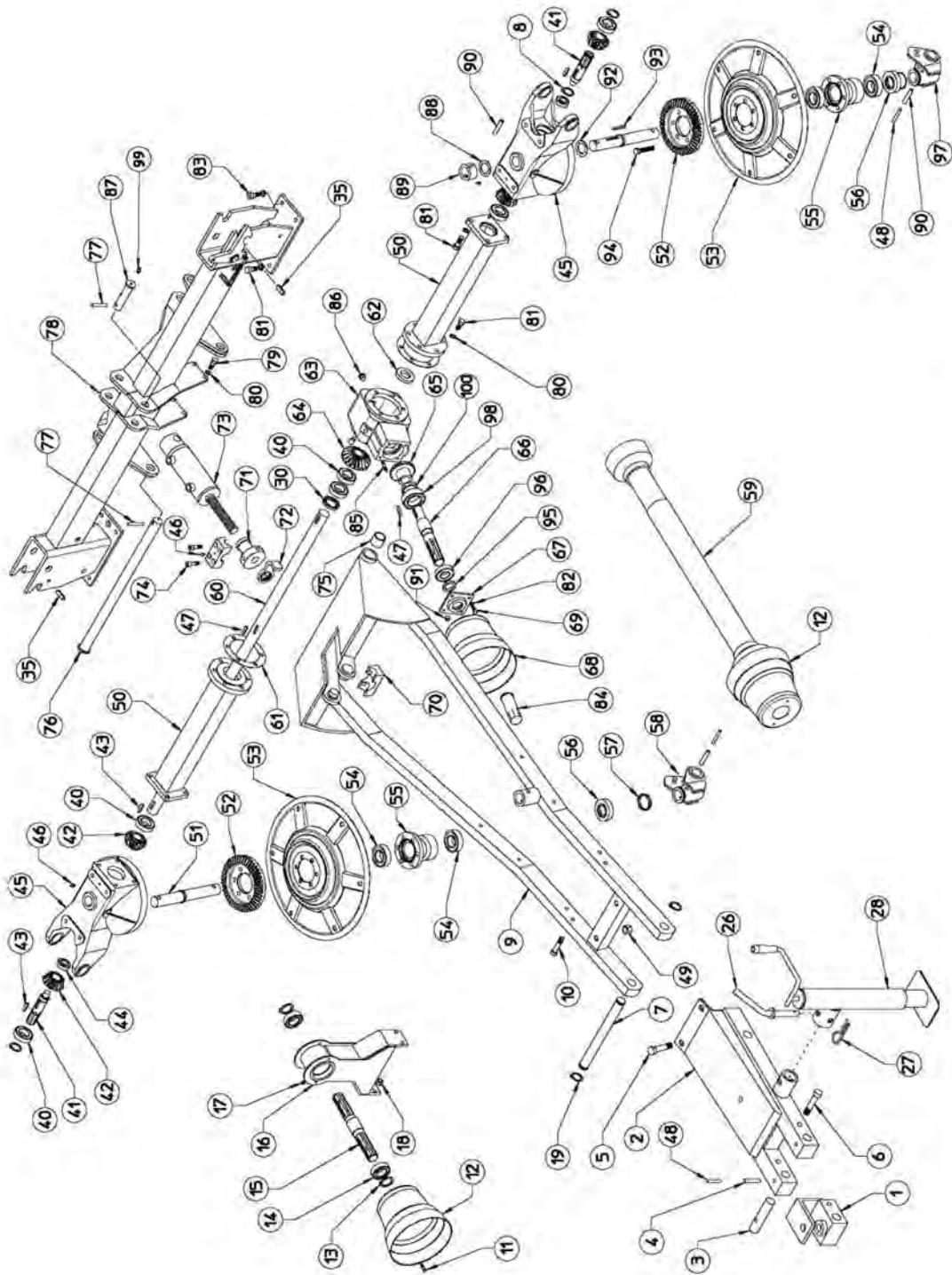
LEFT OUTER WING ASSEMBLY

Continued...

ITEM	PART NO.	QTY.	DESCRIPTION
66	3670259	1	TIRE BRACKET
67	3670100	1	TIRE ASSY
69	3676439	1	BUSH
70	3676903	1	GASKET OR829
71	3670261	1	SUPPORT L.H.
72	61091C8	1	SCREW M16 X 50
73	701515C	2	WASHER D. 17
74	3038445	2	NUT M16
75	001465	2	GREASE NIPPLE M6
76	3678411	1	SPRING PIN D 7 X 55
77	3676701	1	DUST COVER OUTER
78	3676700	1	DUST COVER INNER
79	3676002	1	BEARING 6205-2RS
80	3677514	1	SPACER
81	3677600	1	RIM
82	3677800	1	TUBE
83	3677801	1	TIRE

BLANK INTENTIONALLY

TONGUE, GEARBOX, & CENTER ASSEMBLY ASSEMBLY



TONGUE, GEARBOX, & CENTER ASSEMBLY ASSEMBLY

Continued...

ITEM	PART NO.	QTY.	DESCRIPTION
1	3670233	1	BRACKET
2	3670234	1	EXTENSION
3	3677520	2	PIN
4	703714W	2	SPLIT PIN D 12 X 60 DIN1481
5	00765902	2	SCREW M 16 X 90
6	613914C8	2	SCREW M16 X 80 DIN933
7	3677521	1	PIN
8	3678205	4	SNAP RING E29
9	3670235	1	DRAWBAR
10	00754517	4	SCREW M12X 55 DIN933
11	02969728	4	SCREW M6 X 20 DIN933
12	3696775	2	HOOD
13	00766021	2	SNAP RING E 35
14	00754459	2	BEARING 6207-2RS
15	3677522	1	SHAFT
16	3670236	1	SUPPORT
17	70092C	4	NUT M6 CL
18	00772648	6	NUT M12 CL
19	3678200	2	SNAP RING E30
26	3638602	1	PIN
27	3638400	1	PIN
28	3668624	1	STAND
30	3676801	1	OIL RETAINER 30/56-10
35	703611W	2	SPRING PIN D. 10X32
40	3636003	6	BEARING 6206-2RS
41	3677523	2	SHAFT
42	3676432	4	PINION
43	710636	4	TAP 8X35
44	00764918	2	BEARING 63004-2RS
45	3676433	2	GEARBOX
46	001465	2	GREASE NIPPLE M6
47	710640	2	TAP 8X40
48	3678411	2	SPRING PIN D7 X 55
49	3038445	2	NUT M16 CL
50	3676434	2	AXLE
51	3676435	2	PIN
52	3676436	2	CROWN
53	3676437	2	TINE DISC
54	00754459	4	BEARING 6207-2RS
55	3676438	2	HUB
56	3676439	2	BUSH

PT625H

TONGUE, GEARBOX, & CENTER ASSEMBLY ASSEMBLY

Continued...

ITEM	PART NO.	QTY.	DESCRIPTION
57	3676903	2	GASKET OR829
58	3670258	1	SUPPORT
59	3686401	1	CARDAN SHAFT
60	3676440	1	DRIVE SHAFT
61	3676900	2	GASKET
62	3676802	1	OIL RETAINER 30/62-10
63	3676441	1	GEARBOX
64	3676442	1	CROWN
65	3676443	1	PINION
66	3676444	1	SHAFT
67	3676403	1	GEARBOX CAP
68	3676778	1	HOOD
69	02958784	2	SCREW M8 X 20
70	3677107	1	EQUALIZER
71	3677108	1	SELF LOOKING NUT
72	3677524	1	LOOKING
73	3677109	1	CYLINDER
74	708012C8	4	SCREW TCEI M10 X 50
75	3696000	2	BUSHING
76	3670238	1	PIN
77	703516W	2	SPRING PIN D 8 X 50
78	3670239	1	CROSSPIECE
79	00766177	4	SCREW M 12 X 45
80	701613C	24	WASHER D 13
81	02959661	16	SCREW M12 X 35
82	701611C	2	WASHER D 8,4
83	3678408	4	SCREW
84	3676777	1	SHAFT GUARD
85	3678401	2	BOLT M8X30
86	3676407	2	OIL CAP
87	3670240	1	PIN
88	3676901	2	SHIM
89	3676445	2	BUSH
90	703713W	4	SPRING PIN D12 X 55
91	70093C	2	NUT M8
92	3676905	2	SHIM
93	710460	2	CAP 6X60
94	613713C8	12	SCREW M12 X60
95	3676800	1	OIL RETAINER 35/52 X10
96	3676004	1	BEARING 3207B.TVH
97	3670261	1	SUPPORT

PT625H

TONGUE, GEARBOX, & CENTER ASSEMBLY ASSEMBLY

Continued...

ITEM	PART NO.	QTY.	DESCRIPTION
98	00764417	1	BEARING 6209 2RS
99	2568408	1	GREASE NIPPLE M8
100	3676463	1	BUSH

RHINO[®]
LIMITED WARRANTY

1. LIMITED WARRANTIES

- 1.01. M&W warrants for one year from the purchase date to the original non-commercial, governmental, or municipal purchaser ("Purchaser") and warrants for six months to the original commercial or industrial purchaser ("Purchaser") that the goods purchased are free from defects in material or workmanship.
- 1.02. Manufacturer will replace for the Purchaser any part or parts found, upon examination at one of its factories, to be defective under normal use and service due to defects in material or workmanship.
- 1.03. This limited warranty does not apply to any part of the goods which has been subjected to improper or abnormal use, negligence, alteration, modification, or accident, damaged due to lack of maintenance or use of wrong fuel, oil, or lubricants, or which has served its normal life. This limited warranty does not apply to any part of any internal combustion engine, or expendable items such as blades, shields, guards, or pneumatic tires except as specifically found in your Operator's Manual.
- 1.04. Except as provided herein, no employee, agent, Dealer, or other person is authorized to give any warranties of any nature on behalf of Manufacturer.

2. REMEDIES AND PROCEDURES.

- 2.01. This limited warranty is not effective unless the Purchaser returns the Registration and Warranty Form to Manufacturer within 30 days of purchase.
- 2.02. Purchaser claims must be made in writing to the Authorized Dealer ("Dealer") from whom Purchaser purchased the goods or an approved Authorized Dealer ("Dealer") within 30 days after Purchaser learns of the facts on which the claim is based.
- 2.03. Purchaser is responsible for returning the goods in question to the Dealer.
- 2.04. If after examining the goods and/or parts in question, Manufacturer finds them to be defective under normal use and service due to defects in material or workmanship, Manufacturer will:
 - (a) Repair or replace the defective goods or part(s) or
 - (b) Reimburse Purchaser for the cost of the part(s) and reasonable labor charges (as determined by Manufacturer) if Purchaser paid for the repair and/or replacement prior to the final determination of applicability of the warranty by Manufacturer.The choice of remedy shall belong to Manufacturer.
- 2.05. Purchaser is responsible for any labor charges exceeding a reasonable amount as determined by Manufacturer and for returning the goods to the Dealer, whether or not the claim is approved. Purchaser is responsible for the transportation cost for the goods or part(s) from the Dealer to the designated factory.

3. LIMITATION OF LIABILITY.

- 3.01. MANUFACTURER DISCLAIMS ANY EXPRESS (EXCEPT AS SET FORTH HEREIN) AND IMPLIED WARRANTIES WITH RESPECT TO THE GOODS INCLUDING, BUT NOT LIMITED TO, MERCHANTABILITY AND FITNESS FOR A PARTICULAR PURPOSE.
- 3.02. MANUFACTURER MAKES NO WARRANTY AS TO THE DESIGN, CAPABILITY, CAPACITY, OR SUITABILITY FOR USE OF THE GOODS.
- 3.03. EXCEPT AS PROVIDED HEREIN, MANUFACTURER SHALL HAVE NO LIABILITY OR RESPONSIBILITY TO PURCHASER OR ANY OTHER PERSON OR ENTITY WITH RESPECT TO ANY LIABILITY, LOSS, OR DAMAGE CAUSED OR ALLEGED TO BE CAUSED DIRECTLY OR INDIRECTLY BY THE GOODS INCLUDING, BUT NOT LIMITED TO, ANY INDIRECT, SPECIAL, CONSEQUENTIAL, OR INCIDENTAL DAMAGES RESULTING FROM THE USE OR OPERATION OF THE GOODS OR ANY BREACH OF THIS WARRANTY. NOTWITHSTANDING THE ABOVE LIMITATIONS AND WARRANTIES, MANUFACTURER'S LIABILITY HEREUNDER FOR DAMAGES INCURRED BY PURCHASER OR OTHERS SHALL NOT EXCEED THE PRICE OF THE GOODS.
- 3.04. NO ACTION ARISING OUT OF ANY CLAIMED BREACH OF THIS WARRANTY OR TRANSACTIONS UNDER THIS WARRANTY MAY BE BROUGHT MORE THAN TWO (2) YEARS AFTER THE CAUSE OF ACTION HAS OCCURRED.

4. MISCELLANEOUS.

- 4.01. Proper Venue for any lawsuits arising from or related to this limited warranty shall be only in Guadalupe County, Texas.
- 4.02. Manufacturer may waive compliance with any of the terms of this limited warranty, but no waiver of any terms shall be deemed to be a waiver of any other term.
- 4.03. If any provision of this limited warranty shall violate any applicable law and is held to be unenforceable, then the invalidity of such provision shall not invalidate any other provisions herein.
- 4.04. Applicable law may provide rights and benefits to purchaser in addition to those provided herein.

KEEP FOR YOUR RECORDS

ATTENTION: Purchaser should fill in the blanks below for his reference when buying repair parts and/or for proper machine identification when applying for warranty.

M&W Implement Model _____ Serial Number _____

Date Purchased _____ Dealer _____

ATTENTION:
READ YOUR OPERATOR'S MANUAL

RHINO[®]

An Alamo Group Company
1020 South Sangamon Ave.
Gibson City, Illinois 60936
217-784-426





TO THE OWNER/OPERATOR/DEALER

To keep your implement running efficiently and safely, read your manual thoroughly and follow these directions and the Safety Messages in this Manual. The Table of Contents clearly identifies each section where you can easily find the information you need.

The OCCUPATIONAL SAFETY AND HEALTH ACT (1928.51 Subpart C) makes these minimum safety requirements of tractor operators:

REQUIRED OF THE OWNER:

1. Provide a Roll-Over-Protective Structure that meets the requirements of this Standard; and
2. Provide Seatbelts that meet the requirements of this paragraph of this Standard and SAE J4C; and
3. Ensure that each employee uses such Seatbelt while the tractor is moving; and
4. Ensure that each employee tightens the Seatbelt sufficiently to confine the employee to the protected area provided by the ROPS.

REQUIRED OF THE OPERATOR

1. Securely fasten seatbelt if the tractor has a ROPS.
2. Where possible, avoid operating the tractor near ditches, embankments, and holes.
3. Reduce speed when turning, crossing slopes, and on rough, slick, or muddy surfaces.
4. Stay off slopes too steep for safe operation.
5. Watch where you are going - especially at row ends, on roads, and around trees.
6. Do not permit others to ride.
7. Operate the tractor smoothly - no jerky turns, starts, or stops.
8. Hitch only to the drawbar and hitch points recommended by the tractor manufacturer.
9. When the tractor is stopped, set brakes securely and use park lock, if available.



Keep children away from danger all day, every day...



Equip tractors with rollover protection (ROPS) and keep all machinery guards in place...



Please work, drive, play and live each day with care and concern for your safety and that of your family and fellow citizens.

