



# 950

## REAR MOUNTED BLADE

Rev 07-15

P/N 597P

# PART'S MANUAL

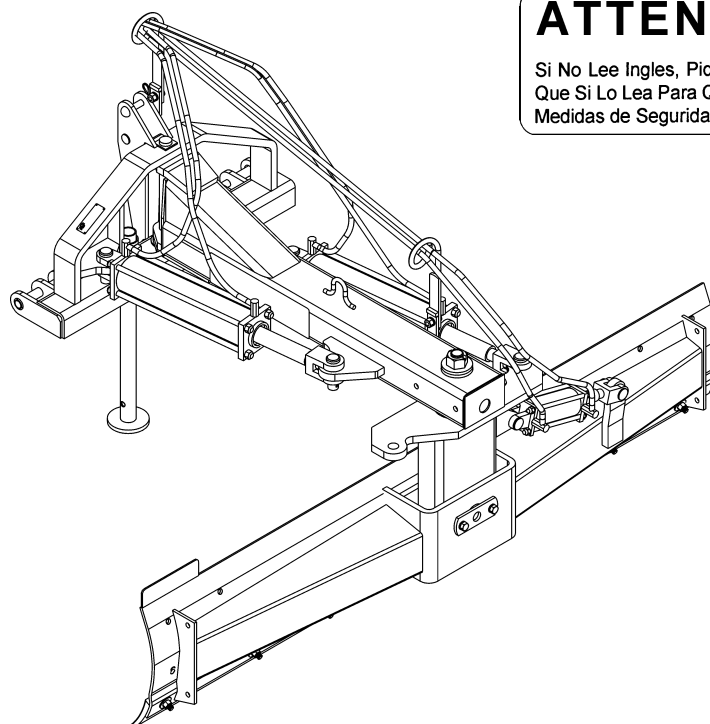


An Operator's Manual was shipped with the equipment in the Manual Canister. This Operator's Manual is an integral part of the safe operation of this machine and must be maintained with the unit at all times. **READ, UNDERSTAND, and FOLLOW** the Safety and Operation Instructions contained in this manual before operating the equipment. If the Operator's Manual is not with the equipment, contact your dealer or Servis-Rhino (800-446-5158) to obtain a Free copy before operating the equipment.

### ATENCIÓN!

LEA EL INSTRUCTIVO

Si No Lee Ingles, Pida Ayuda a Alguien  
Que Si Lo Lea Para Que le Traduzca las  
Medidas de Seguridad.



## RHINO®

1020 S. Sangamon Ave.  
Gibson City, IL 60936  
800-446-5158

Email: [parts@servis-rhino.com](mailto:parts@servis-rhino.com)

© 2005 Alamo Group Inc.



# TO THE OWNER/OPERATOR/DEALER

All implements with moving parts are potentially hazardous. There is no substitute for a cautious, safe-minded operator who recognizes the potential hazards and follows reasonable safety practices. The manufacturer has designed this implement to be used with all its safety equipment properly attached to minimize the chance of accidents.

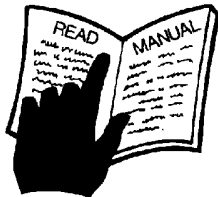
**BEFORE YOU START!!** Read the safety messages on the implement and shown in your manual.  
Observe the rules of safety and common sense!



# DANGER

FAILING TO FOLLOW SAFETY MESSAGES AND OPERATING INSTRUCTIONS CAN CAUSE SERIOUS BODILY INJURY OR EVEN DEATH TO OPERATOR AND OTHERS IN THE AREA.

1.



2. NO RIDERS, NO CHILDREN OPERATORS



3. USE SAFETY SHOES, HARD HAT, SAFETY GLASSES, SEAT BELTS, & ROPS



4. BLOCK UP SECURELY BEFORE WORKING UNDER.



1. Study and understand Operator's Manuals, Safety Signs, and Instructional Decals for tractor & flail mower to prevent misuse, abuse, & accidents. Practice before operating mower in a confined area or near passersby.

- Learn how to stop engine suddenly in an emergency. Be alert for passersby and especially children.

2. Allow no children on or near implement or tractor. Allow no riders on tractor or implement. Falling off can cause serious injury or death from being run over by tractor or mower or contact with Flail Mower Blades.

3. Operate only with tractor having Roll-Over Protective Structure (ROPS) and with seatbelt fastened securely and snugly to prevent injury and possible death from falling off or tractor overturn. Personal Protective Equipment such as Hard Hat, Safety Glasses, Safety Shoes, and Ear Plugs are recommended.

4. Block up or support raised machine and all lifted components securely before putting hands or feet under or working underneath any lifted component to prevent crushing injury or death from sudden dropping or inadvertent operation of controls. Make certain that area is clear before lowering or folding.

5. Before transporting, put Lift Lever in detent or full-lift position. Install Transport Safety Devices securely on folding implements. Slow down when turning and on hillsides.

- Install \*\*Restrictor in folding circuit to slow down lowering and unfolding if action is faster than is desirable.

6. Make certain that SMV sign, Warning Lights, and Reflectors are clearly visible. Follow local traffic codes.

7. Never operate with Flail Mower or Folding Section raised if passersby, bystanders or traffic are in the area to reduce possibility of injury or death from objects thrown by Blades under Shields or implement structure.

8. Before dismounting, secure flail mower in transport position or lower to ground.

• Put tractor in park or set brake, disengage PTO, stop engine, remove key, and wait until noise of rotation has ceased to prevent entanglement in rotating parts which may cause injury or death.

- Never mount or dismount a moving vehicle. Crushing from runover may cause injury or death.

5. TRANSPORT SAFELY, LOCK UP.

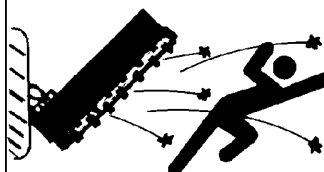


WARRANTY INFORMATION

6. USE SMV, LIGHTS, & REFLECTORS.



7. DO NOT OPERATE WITH MOWER OR WING RAISED.



8. DO NOT MOUNT OR DISMOUNT WHILE MOVING.



002369

Read and understand the complete Warranty Statement found in this Manual. Fill out the Warranty Registration Form in full and return it within 30 Days. Make certain the Serial Number of the Machine is recorded on the Warranty Card and on the Warranty Form that you retain. The use of "will-fit" parts will void your warranty and can cause catastrophic failure with possible injury or death.

# **PARTS SECTION**

# PARTS ORDERING GUIDE

The following instructions are offered to help eliminate needless delay and error in processing purchase orders for the equipment in this section.

1. The Parts Section is prepared in logical sequence and grouping of parts that belong to the basic machine featured in this manual. Part Numbers and Descriptions are given to help locate the parts and quantities required.
2. The Purchase Order must include the name and address of the person or organization ordering the parts, who should be charged, and if possible, the serial number of the machine for which the parts are ordered.
3. The Purchase Order must clearly list the quantity of each part, the complete and correct part number (be sure to include all periods), and the basic name of the part.
4. The Manufacturer reserves the right to substitute parts where applicable.
5. Some parts are unlisted items which are special production items not normally stocked and are subject to special handling. Request a quotation for such parts before sending a Purchase Order.
6. The Manufacturer reserves the right to change prices without prior notice.

**NOTE:** Please refer to The Safety Section in the front of this Manual for the proper Part Number when ordering Replacement Safety Decals.



For maximum safety and to guarantee optimum product reliability, always use genuine Servis-Rhino Parts. The use of inferior replacement parts may cause premature or catastrophic failure which could result in serious injury or death. Direct any questions regarding parts to:

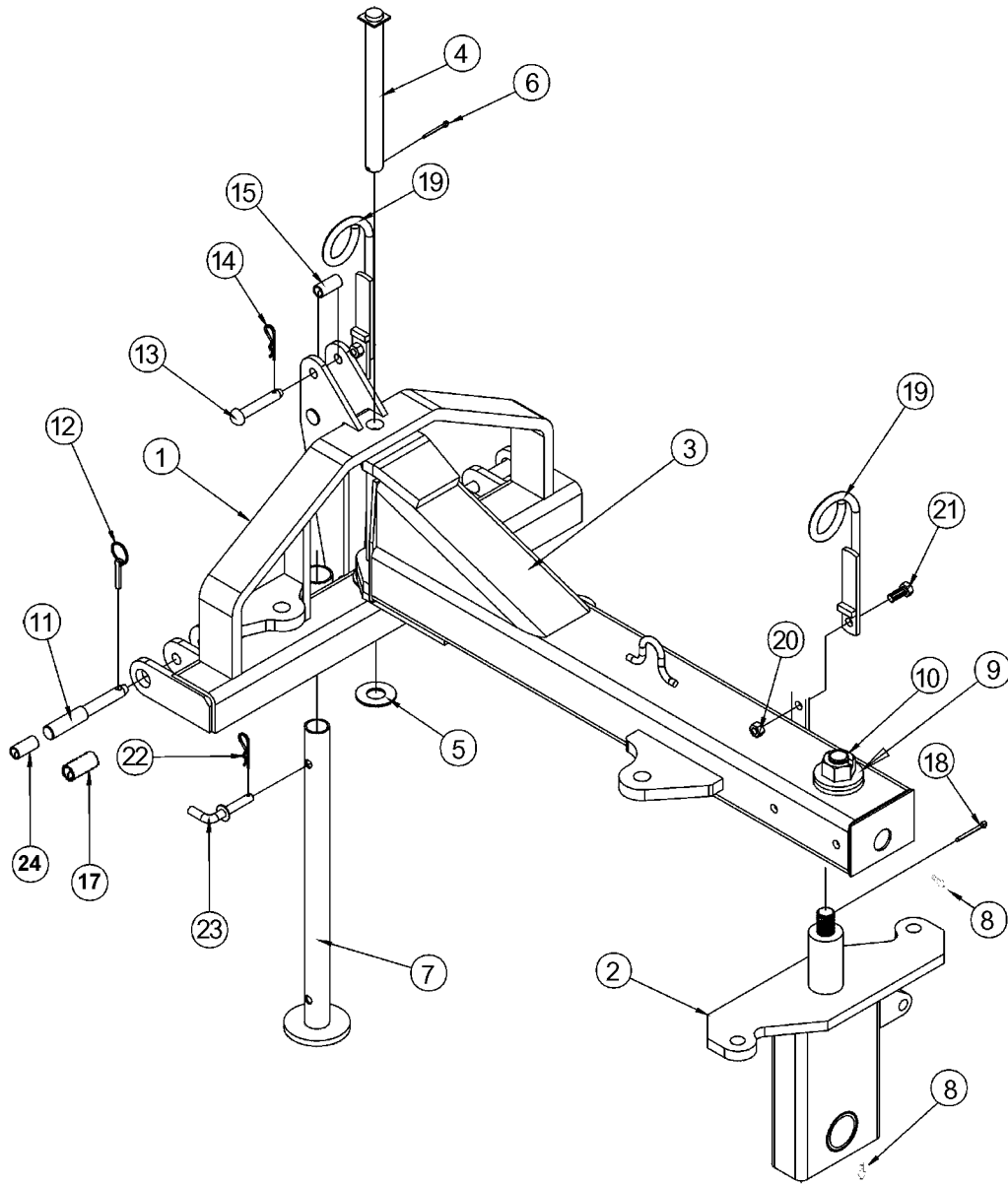


**RHINO®**  
1020 S. Sangamon Ave.  
Gibson City, IL 60936  
800-446-5158  
Email: [parts@servis-rhino.com](mailto:parts@servis-rhino.com)

# PART NAME INDEX

ADJUSTING LINK EFFECTIVE S/N - 13233 AND PRIOR.....	8
ADJUSTING LINK EFFECTIVE S/N - 14001 AND AFTER .....	7
ADJUSTING LINK MANUAL TILT.....	9
BRACKET ASSY - CONTROL VALVE.....	28
CONTROL VALVE ASSEMBLY .....	26
END PLATES.....	22
HYDRAULIC CYLINDER - FOR PLANNER WHEEL (LANTEX).....	15
HYDRAULIC CYLINDER - FOR PLANNER WHEEL (CROSS) .....	16
HYDRAULIC CYLINDER - FOR PLANNER WHEEL - (8727).....	17
HYDRAULIC CYLINDER - FOR PLANNER WHEEL - (8727A) .....	18
HYDRAULIC CYLINDER EFFECTIVE S/N - 13233 AND PRIOR .....	12
HYDRAULIC CYLINDER S/N - 14001-AFTER Rev 03-05 .....	11
HYDRAULIC CYLINDER-MOLDBOARD TILT - DISCONTINUED (CROSS).....	18
HYDRAULIC CYLINDER-MOLDBOARD TILT - DISCONTINUED (LANTEX).....	19
HYDRAULIC CYLINDER-MOLDBOARD TILT - EFFECTIVE S/N - 10626 - 13233.....	14
HYDRAULIC CYLINDER-MOLDBOARD TILT EFFECTIVE S/N - 14001 AND AFTER.....	13
HYDRAULIC HOSE CONNECTIONS .....	27
MAINFRAME ASSEMBLY .....	4
MOLDBOARD ASSEMBLY .....	6
PLANNER WHEEL ASSEMBLY.....	24
RATCHET-TYPE LIFT SCREW .....	23
REAR BLADES HYDRAULICS .....	10
SAFETY DECAL SHEETS .....	29
SELECTOR VALVE .....	21
TAILWHEEL ASSEMBLY .....	25

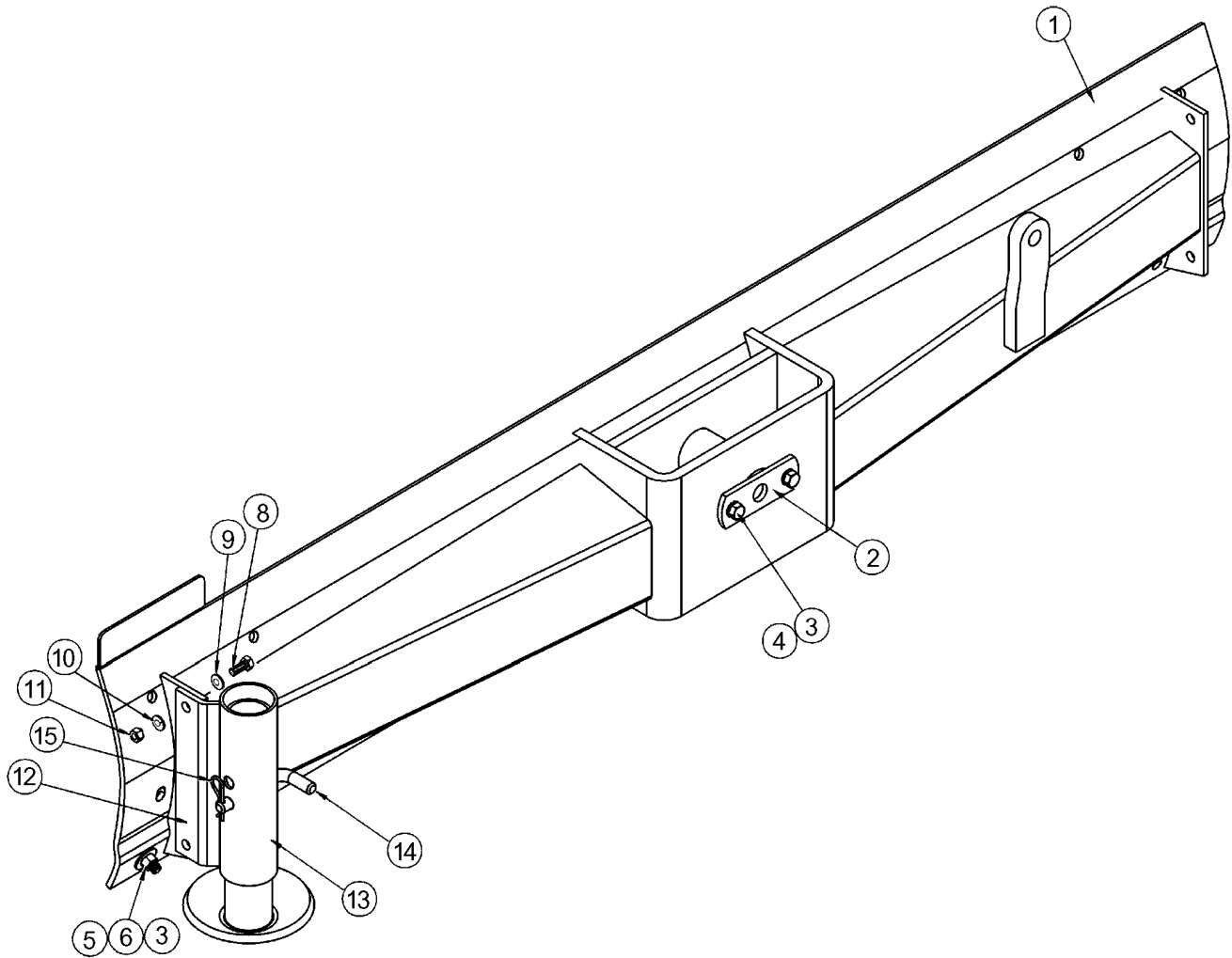
# MAINFRAME ASSEMBLY



# MAINFRAME ASSEMBLY

ITEM	PART NO.	QTY.	DESCRIPTION
1	00768200	1	A-FRAME
2	00768175	1	MOLDBOARD CARRIER
3	00768180	1	MAINFRAME
4	00768212	1	MAINFRAME PIVOT PIN
5	15B2400	1	FLATWASHER
6	00036900	1	1/4 X 2-1/2 COTTER PIN
7	0831140000	1	SUPPORT STAND
8	4720	2	GREASE FITTING
9	59113	1	WASHER SPACER
10	5D2460	1	1-1/2 NC PLATED SLOTTED NUT
11	0781080000	2	HITCH PIN (CAT .1 & .2)
12	2196	2	RETAINING PIN
13	37107B12	1	TOP LINK PIN
14	37107B13	2	HAIRPIN CLIP
15	441029	1	TOP LINK BUSHING
17	0781340000	2	BUSHING (FOR CAT. 2, QH)
18	165024	1	BUSHING (5/16 X 3 COTTERPIN)
19	0691320000	2	BUSHING (BRACKET, HYD HOSE HOLDER)
20	00695100	2	5/8 NC TOPLOCK NUT
21	02675800	2	5/8 NC X 1-1/2 PL5 BOLT
22	2192	1	CLIP
23	69112	1	LOCK PIN
24	00779815	2	LOWER CAT .1(QH)

# MOLDBOARD ASSEMBLY

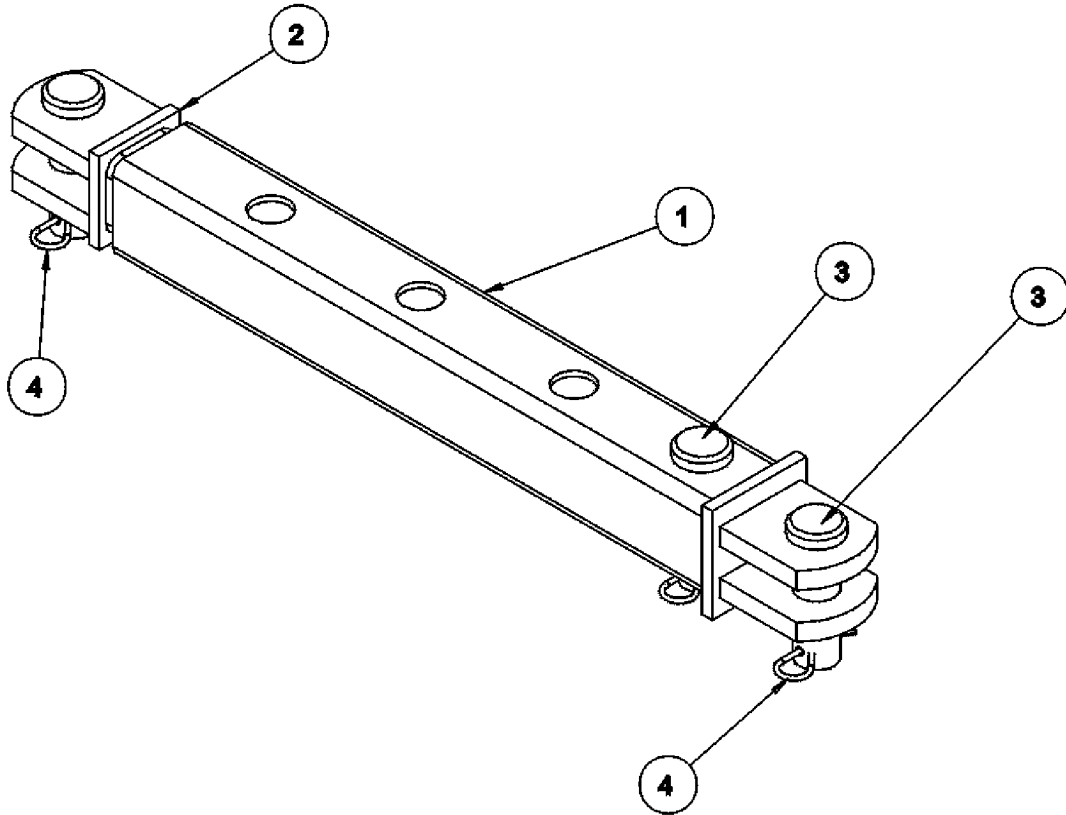


ITEM	PART NO.	QTY.	DESCRIPTION
1	00768232	1	MOLDBOARD (8')**
	00768233	1	MOLDBOARD (9')**
2	00768491	1	MOLDBOARD PIVOT PIN
3	000710300	12*	LOCKWASHER
4	00752658	2	BOLT
5	2A3101116	9*	PLOW BOLT
6	00010400	9*	HEX NUT
7	441111	1	GRADER BLADE (8')
	0597070002	1	GRADER BLADE (9')
8	02845500	4	BOLT
9	00001401	4	FLATWASHER
10	00010300	4	LOCKWASHER
11	00010400	4	NUT
12	00768246	2	SKID SHOE MOUNT
13	00768243	2	SKID SHOE
14	00768249	2	ADJUSTING PIN
15	37107B13	2	COTTER PIN



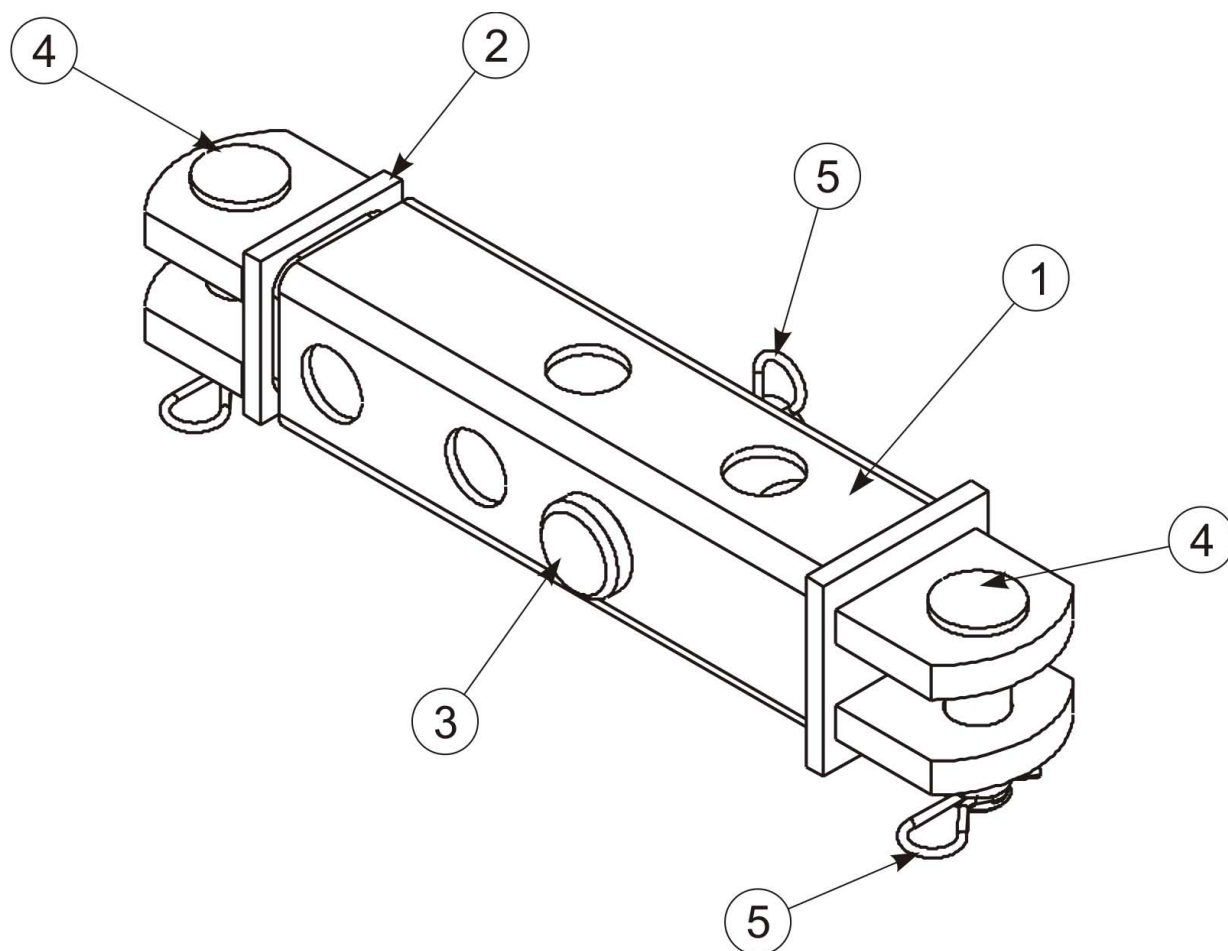
## ADJUSTING LINK EFFECTIVE S/N - 14001 AND AFTER

Effective S/N - 14001 and After



ITEM	PART NO.	QTY.	DESCRIPTION
	<b>00768250</b>	-	<b>MECHANICAL LINK, MANUAL PIVOT &amp; SWING</b>
1	00768251	1	ADJUSTING LINK OUTER
2	00768252	1	ADJUSTING LINK INNER
3	00768269	3	CLEVIS PIN
4	2192	3	HAIR PIN COTTER

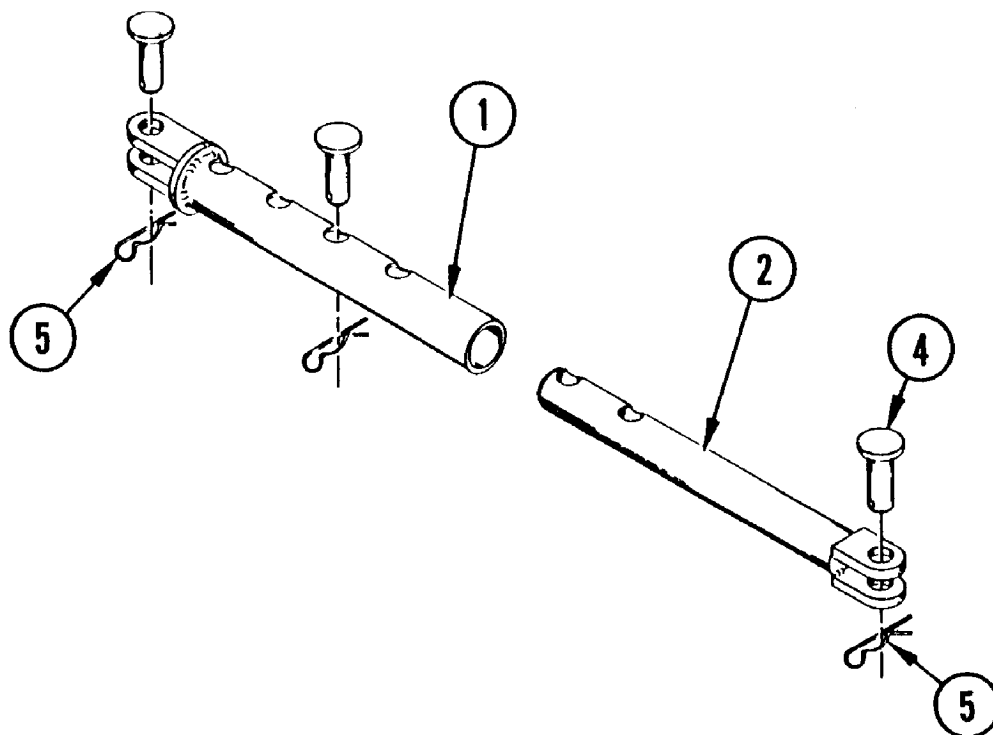
## ADJUSTING LINK - MANUAL TILT



ITEM	PART NO.	QTY.	DESCRIPTION
	<b>00768270</b>	-	<b>MECHANICAL LINK, MANUAL TILT</b>
1	00768271	1	ADJUSTING LINK OUTER
2	00768272	1	ADJUSTING LINK INNER
3	00768269	1	CLEVIS PIN, 1-1/4" x 4"
4	691154	2	CLEVIS PIN
5	2192	3	HAIR PIN COTTER, .178 x 3-3/4"

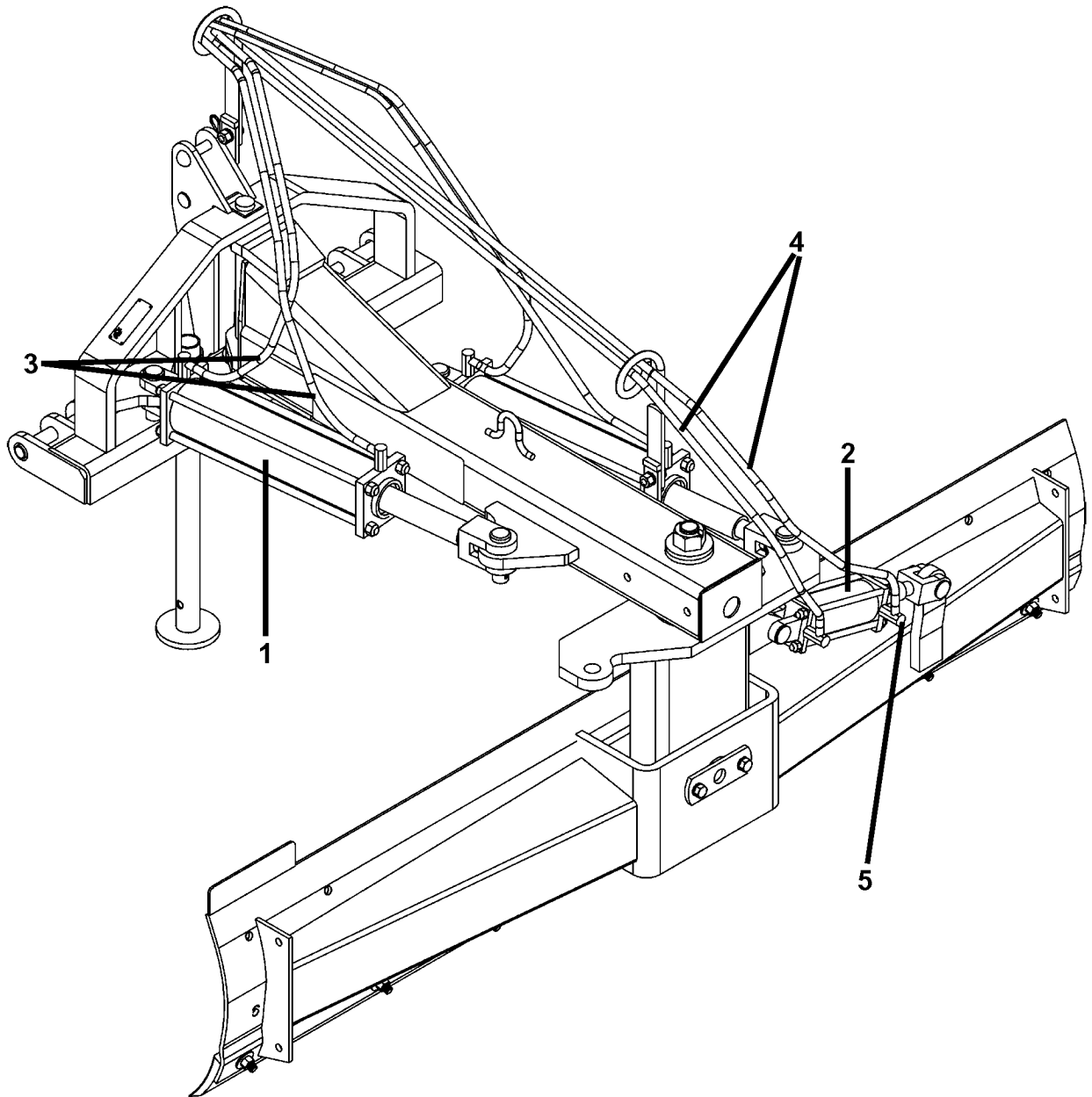
## ADJUSTING LINK EFFECTIVE S/N - 13233 AND PRIOR

Effective S/N - 13233 and Prior



ITEM	PART NO.	QTY.	DESCRIPTION
1	0597060200	1	ADJUSTING LINK HOUSING
2	0597060100	1	ADJUSTING LINK ROD
4	691154	3	CLEVIS PIN
5	37107B13	3	RETAINING PIN

# 

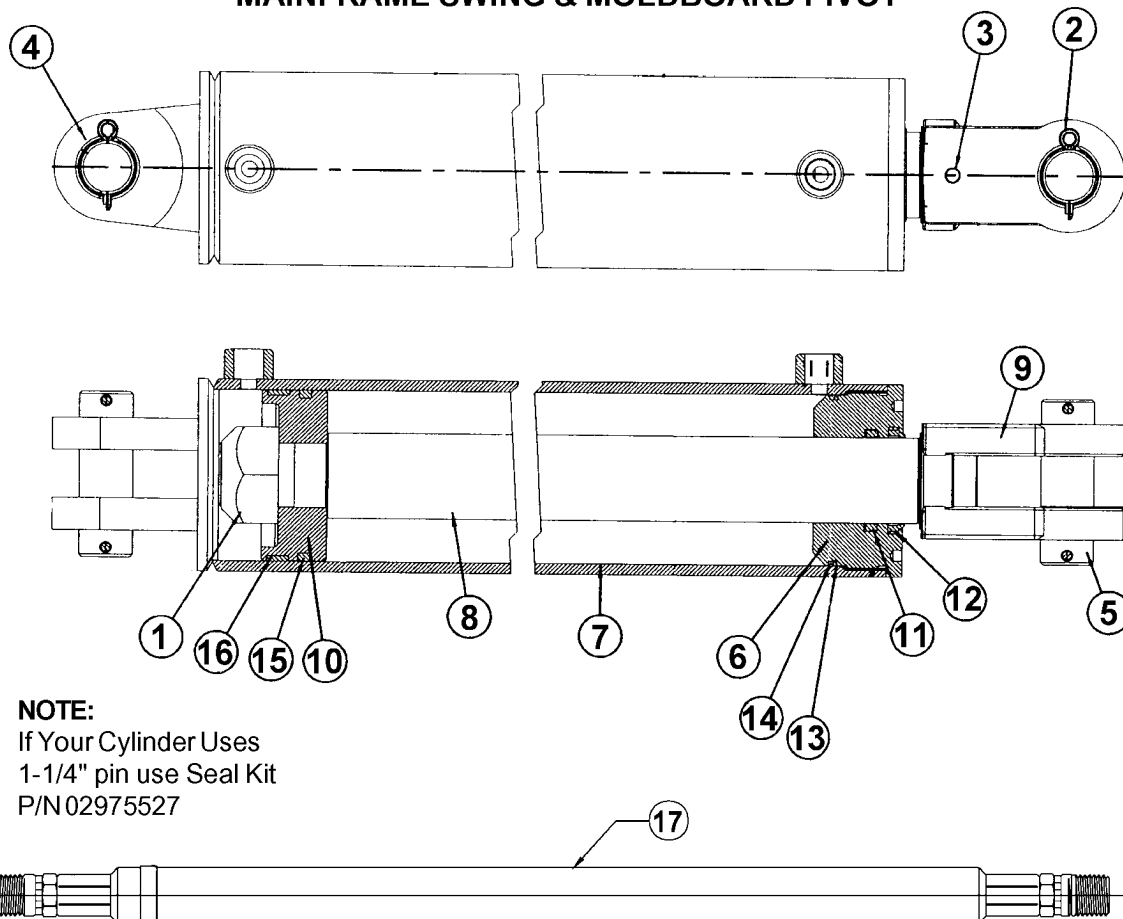


ITEM	PART NO.	QTY 7	QTY 8	QTY 9	DESCRIPTION
1	0691600000B	1	1	2	HYDRAULIC CYLINDER
2	00759715A	1	1	1	HYDRAULIC CYLINDER
3	691302	2	2	4	HOSE
4	651132	2	2	2	HOSE
5	11565	2	2	4	ELBOW ADAPTER

# HYDRAULIC CYLINDER S/N - 14001-AFTER Rev 03-05

Effective S/N - 14001 and After

## MAINFRAME SWING & MOLDBOARD PIVOT



### NOTE:

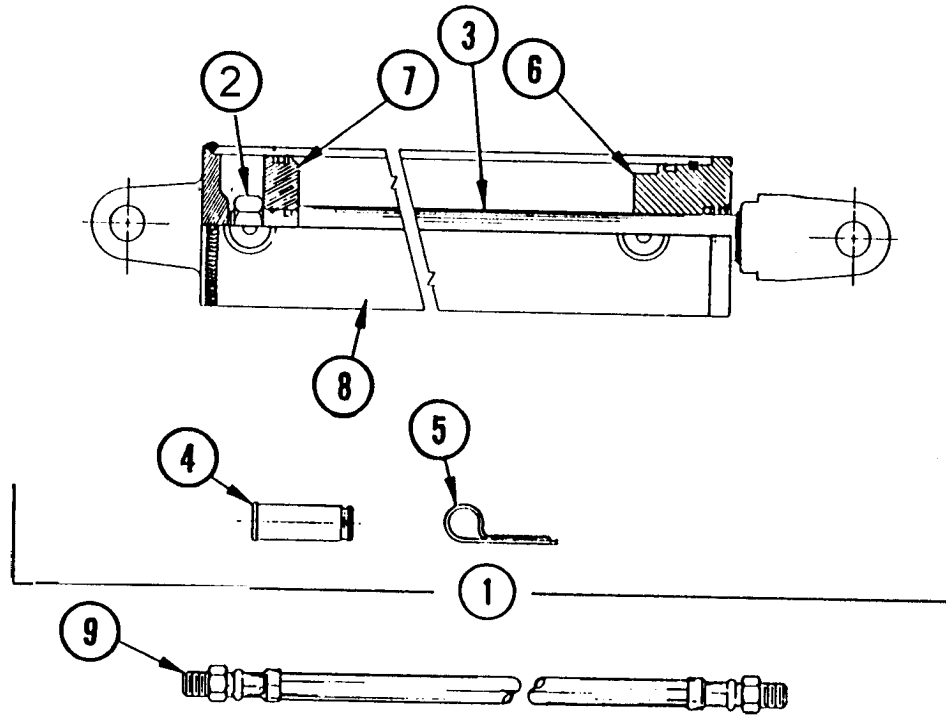
If Your Cylinder Uses  
1-1/4" pin use Seal Kit  
P/N 02975527

ITEM	PART NO.	QTY.	DESCRIPTION
	<b>0691600000B</b>	-	<b>HYDRAULIC CYLINDER</b>
1	00775917	1	HEX NUT
2	49045	4	COTTER PIN
3	0116000	1	SETSCREW
4	00775918	4	BUSHING
5	00775916	2	CYLINDER PIN
6	00775915	1	CYLINDER HEAD
7	00778736	1	CYLINDER TUBE
8	00775913	1	CYLINDER ROD
9	00775912	1	ROD CLEVIS
10	00775911	1	PISTON
11	*	1	SEAL HALLITE
12	*	1	SEAL WIPER ROD
13	*	1	SEAL
14	*	1	O-RING
15	*	1	SEAL PSP PISTON RING
16	*	1	WEAR RING
17	00775908	4	HYDRAULIC HOSE
	02975527	REF	SEAL KIT

# HYDRAULIC CYLINDER EFFECTIVE S/N - 13233 AND PRIOR

Effective S/N - 13233 and Prior

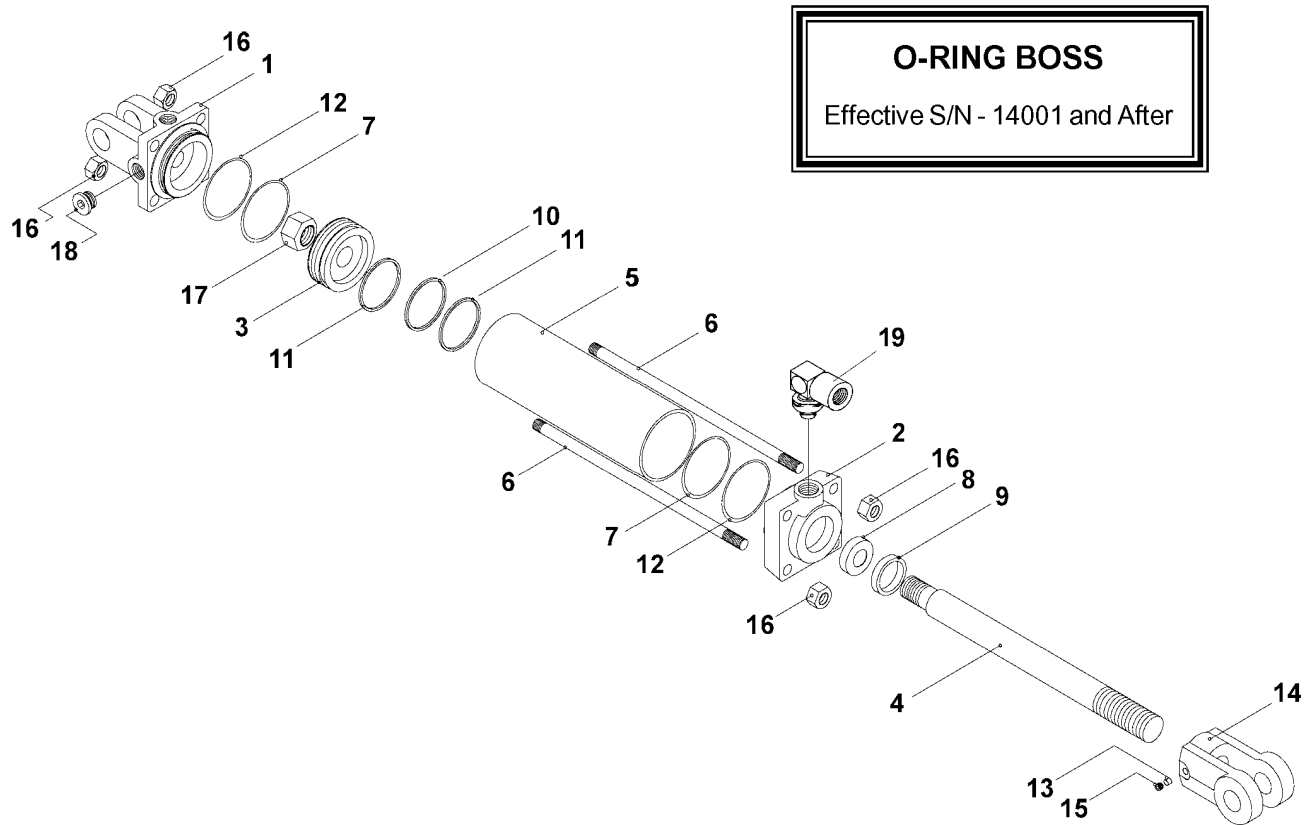
## MAINFRAME SWING & MOLDBOARD PIVOT



ITEM	PART NO.	QTY.	DESCRIPTION
1	0781070000	1	HYDRAULIC CYLINDER COMPLETE
2	0781070002	1	PISTON ROD LOCK NUT
3	0781070018	1	ROD & CLEVIS
4	0781070013	2	CLEVIS PIN
5	00606000	2	CLEVIS PIN
6	0781070014	1	HEAD
7	0781070015	1	PISTON
8	0781070100	1	TUBE
9	691302	AR	HYDRAULIC HOSE
	0781070200	REF	SEAL KIT

# HYDRAULIC CYLINDER-MOLDBOARD TILT EFFECTIVE S/N - 14001 AND AFTER

## MOLDBOARD TILT

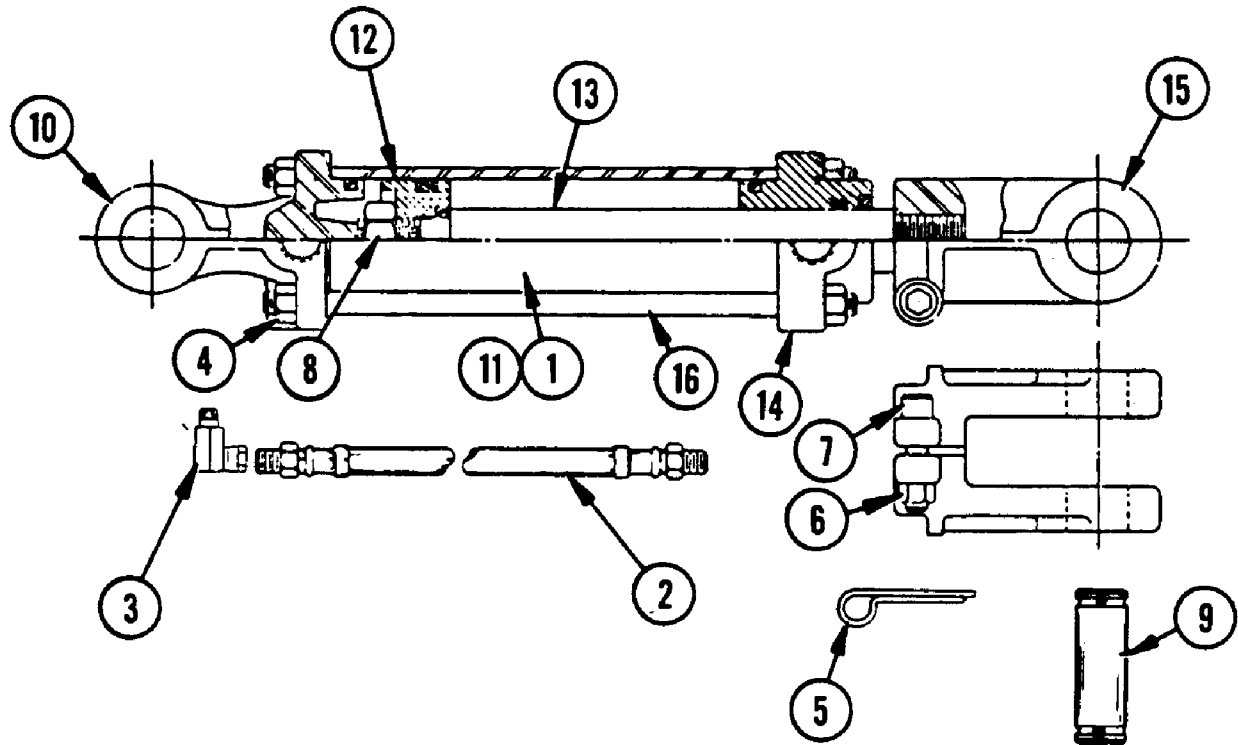


ITEM	PART NO.	QTY.	DESCRIPTION
	00759715A	1	HYDRAULIC CYLINDER
1	2417158	1	CLEVIS CAP
2	2417157	1	ROD CAP
3	00774733	1	PISTON
4	00774736	1	ROD
5	00774747	4	TUBE
6	00774741	2	TIE ROD
7	*	1	END CAP O-RING
8	*	1	ROD, WIPER SEAL
9	*	1	ROD, DUST SEAL
10	*	1	PISTON SEAL
11	*	2	PISTON WEAR RING
12	3047117	2	END CAP BACKUP WASHERS
13	1917140	1	NYLON THREAD PROTECTOR
14	00774740	1	ROD CLEVIS
15	33005H5C	1	SET SCREW
16	33005H5C	8	TIE ROD NUT
17	5JRC16140	1	PISTON NUT
18	1917132	1	PORT PLUG
19	11565	2	ELBOW, FITTING 90°

# HYDRAULIC CYLINDER-MOLDBOARD TILT - EFFECTIVE S/N - 10626 - 13233

## MOLDBOARD TILT

Effective S/N - 10626 - 13233



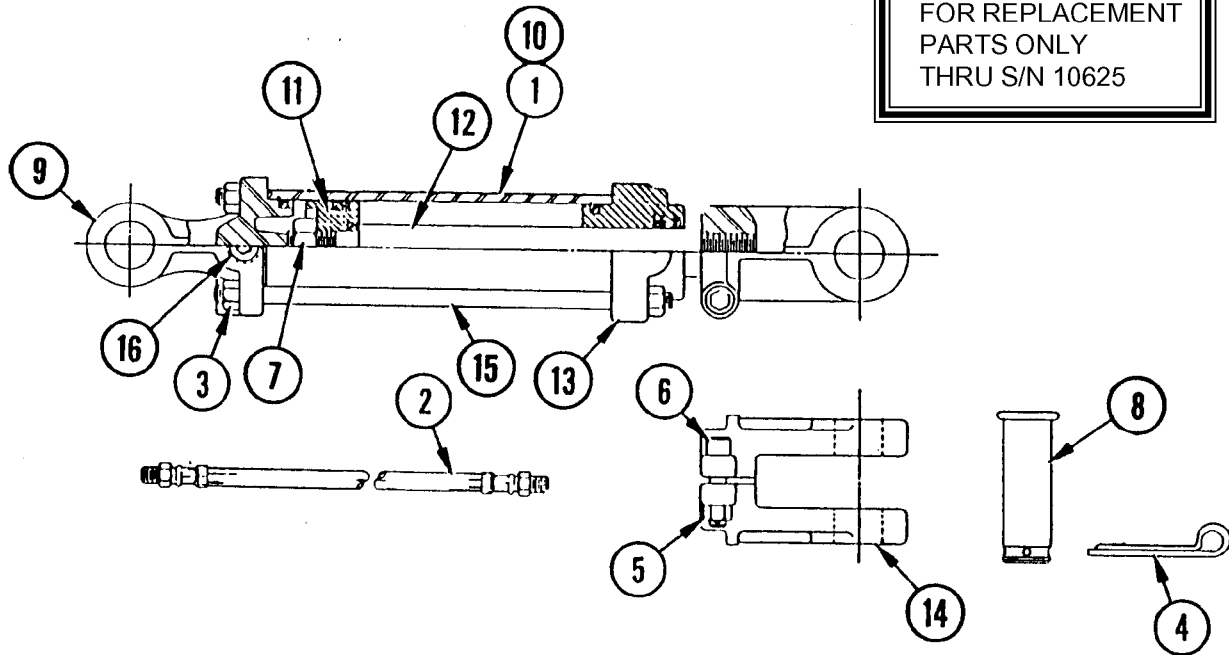
ITEM	PART NO.	QTY.	DESCRIPTION
1	00759715	1	HYDRAULIC CYLINDER W/CLEVIS PIN
2	691302	1	HYDRAULIC HOSE
3	94514	1	STREET ELBOW
4	02816800	8	NUT
5	7343	2	COTTER PIN
6	00013901	1	NUT
7	00023100	1	BOLT
8	4675M	1	PISTON NUT
9	8354	2	CLEVIS PIN
10	8784	1	CAP
11	00759734	1	TUBE
12	00759733	1	PISTON
13	00759735	1	PISTON ROD
14	8786	1	HEAD
15	8754	1	FEMALE CLEVIS
16	00759736	4	TIE ROD
	00759737	1	SEAL KIT



# HYDRAULIC CYLINDER - FOR PLANNER WHEEL (LANTEX)

## MOLDBOARD TILT

**DISCONTINUED**  
FOR REPLACEMENT  
PARTS ONLY  
THRU S/N 10625



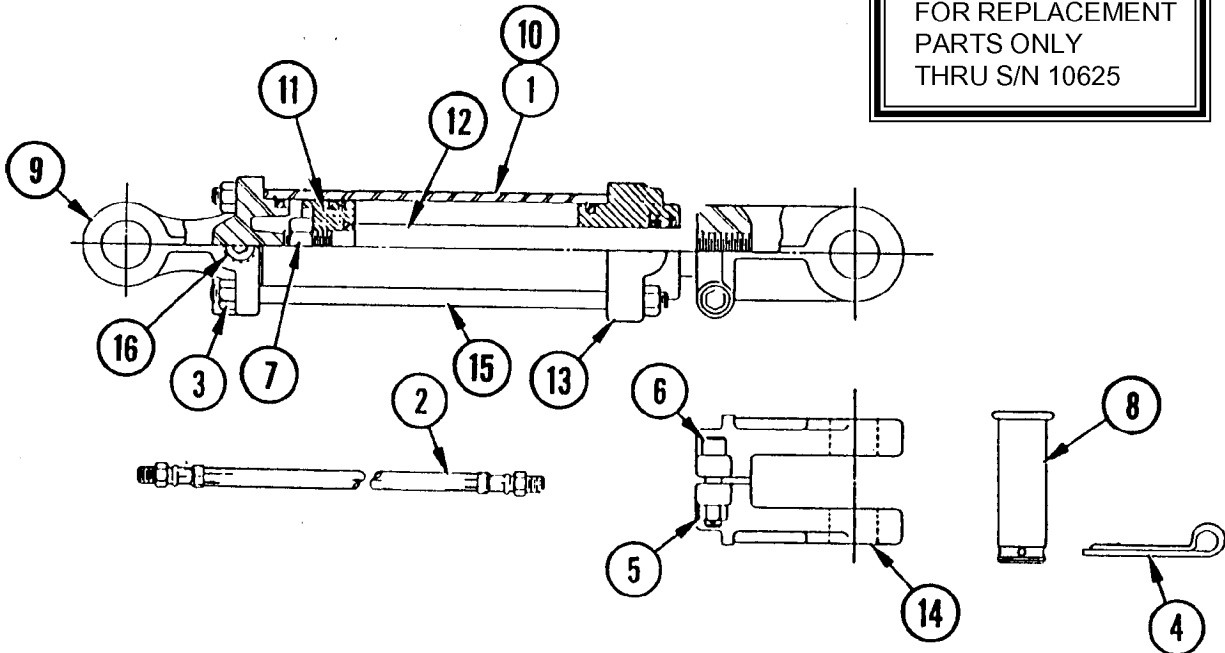
ITEM	PART NO.	QTY.	DESCRIPTION
1	B96131B1	1	HYDRAULIC CYLINDER COMPLETE
2	651132	1	HYDRAULIC HOSE
3	5B8200	8	NUT
4	162012	2	COTTER PIN
5	5B6240	1	HEX NUT
6	7E62414	1	BOLT
7	691351	1	PISTON NUT
8	6511314	2	CLEVIS PIN
9	0651130001	1	BASE CLEVIS
10	0691310002	1	TUBE
11	0651130005	1	PISTON
12	0691310001	1	PISTON ROD
13	0651130016	1	HEAD
14	0651130022	1	PISTON ROD CLEVIS
15	0651310003	4	TIE ROD
	0651130014	REF	SEAL KIT (NOT SHOWN)

DISCONTINUED FOR REPLACEMENT PARTS ONLY THRU S/N 10625

# HYDRAULIC CYLINDER - FOR PLANNER WHEEL (CROSS)

## MOLDBOARD TILT

**DISCONTINUED**  
FOR REPLACEMENT  
PARTS ONLY  
THRU S/N 10625

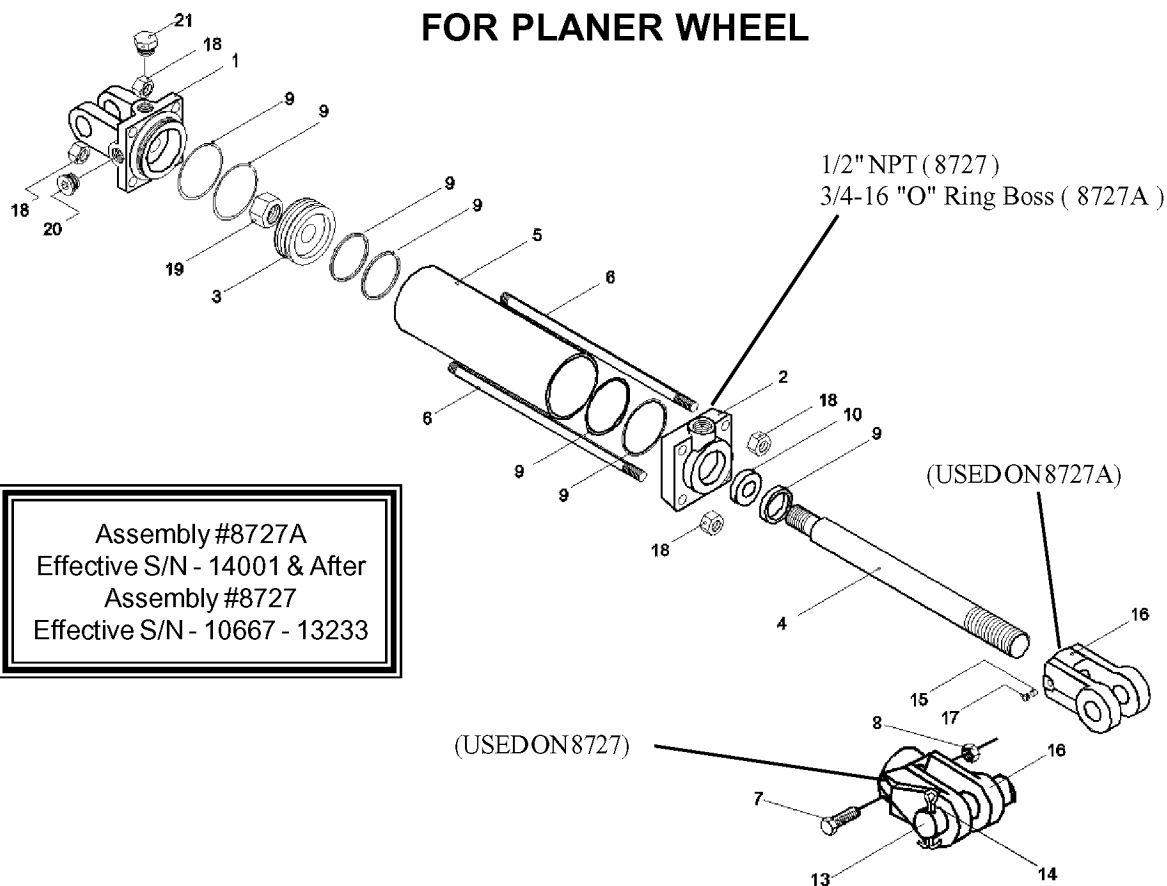


ITEM	PART NO.	QTY.	DESCRIPTION
1	B69131B1	1	HYDRAULIC CYLINDER COMPLETE
2	651132	1	HYDRAULIC HOSE
3	5B8200	8	NUT
	5B7140	8	NUT
4	162012	2	COTTER PIN
5	5B6160	1	HEX BOLT
6	6511322	1	BOLT
7	6511320	1	PISTON NUT
8	6511314	2	CLEVIS PIN
9	65113A12	1	BASE CLEVIS
10	691314	1	TUBE
11	691315	1	PISTON
12	69131B10	1	PISTON ROD
	691316	1	PISTON ROD
13	65113B8	1	HEAD
	65130A4	1	HEAD
14	691354	1	PISTON ROD CLEVIS
	65130A12	1	PISTON ROD CLEVIS
15	69131A7	4	TIE ROD
	691317	4	TIE ROD
16	65130A14	1	PIPE PLUG
	65113A30	REF	SEAL KIT (NOT SHOWN)
	691318	REF	SEAL KIT (NOT SHOWN)

DISCONTINUED FOR REPLACEMENT PARTS ONLY THRU S/N 10625

# HYDRAULIC CYLINDER - FOR PLANNER WHEEL - (8727)

## FOR PLANER WHEEL

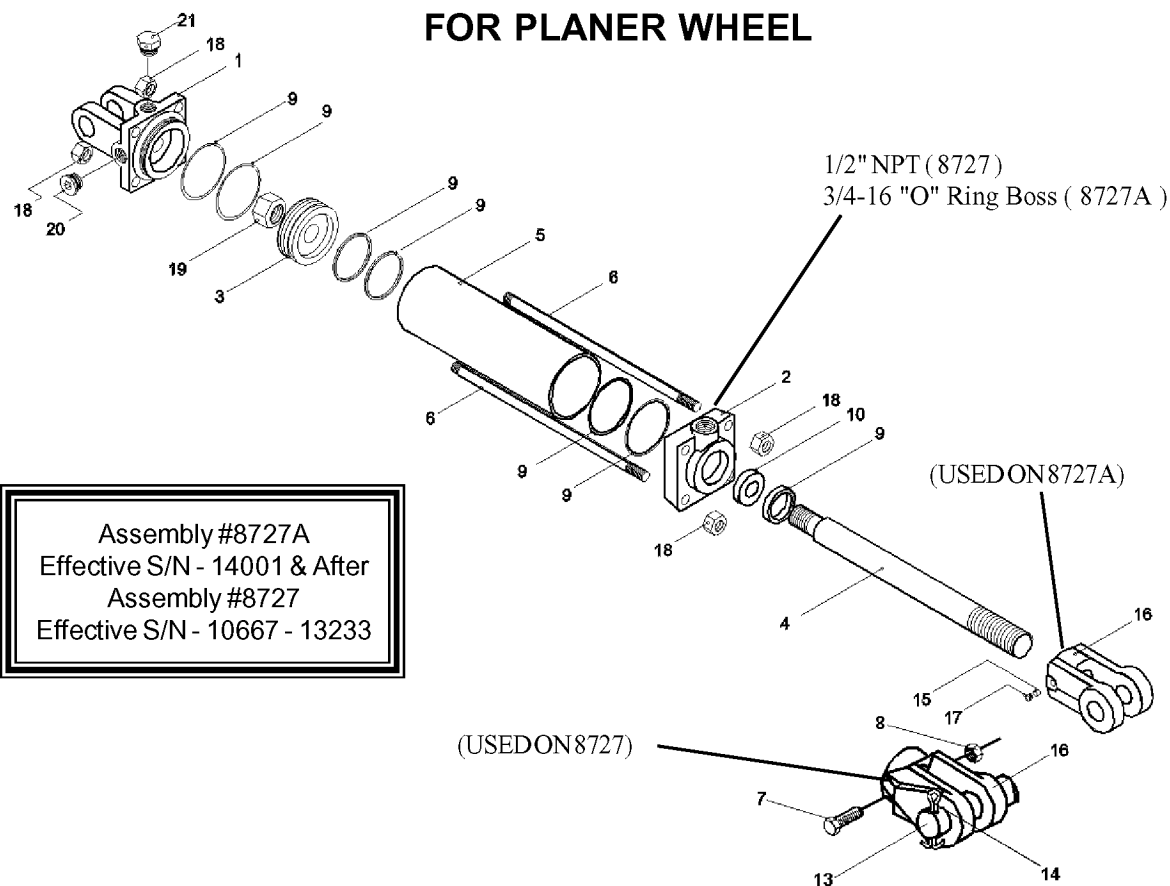


Assembly #8727A  
Effective S/N - 14001 & After  
Assembly #8727  
Effective S/N - 10667 - 13233

ITEM	PART NO.	QTY.	DESCRIPTION
1	8755	1	CAP
2	8757	1	HEAD
3	00760671	1	PISTON
4	8753	1	PISTON ROD
5	8752	1	TUBE
6	8756	4	TIE ROD
7	00023100	1	BOLT
8	00013901	1	HEX NUT
9	8763	1	SEAL KIT
13	8354	2 REF	PIVOT PIN
14	00606000	2 REF	COTTER PIN
16	8754	1	OUTER CLEVIS
18	02031800	8	TIE ROD
19	4675	1	PISTON NUT
21	7339	1	BREATHER PLUG
	651132	2 REF	HYDRAULIC HOSE (NOT SHOWN)
	94514	2 REF	SWIVEL FITTING 90°

# HYDRAULIC CYLINDER - FOR PLANNER WHEEL - (8727A)

## FOR PLANER WHEEL



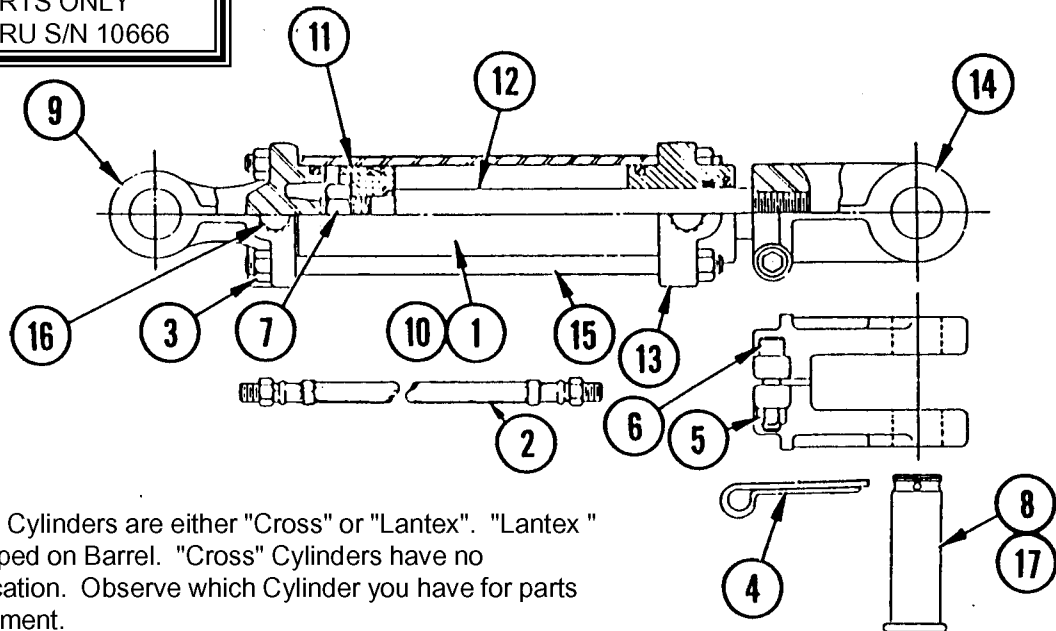
Assembly #8727A  
Effective S/N - 14001 & After  
Assembly #8727  
Effective S/N - 10667 - 13233

ITEM	PART NO.	QTY.	DESCRIPTION
1	00774729	1	CLEVIS CAP
2	00774734	1	ROD CAP
3	00774730	1	PISTON
4	00774753	1	ROD
5	3047111	1	TUBE
6	3047112	4	TIE ROD
9	00774760	1	SEAL KIT
15	3047117	1	NYLON THREAD PROTECTOR
16	1917140	1	ROD CLEVIS
17	00774740	1	SET SCREW
18	33003H5C	8	TIE ROD NUT
19	5JRC12160	1	PISTON NUT
20	1917132	1	PORT PLUG
21	2417154	1	BREATHER
	651132	2 REF	HOSE (NOT SHOWN)
	94514	2 REF	ELBOW (NOT SHOWN)
	0652141311	2 REF	ADAPTER (NOT SHOWN)
	8354	2 REF	PIN (NOT SHOWN)
	00606000	2 REF	COTTER PIN (NOT SHOWN)

# HYDRAULIC CYLINDER-MOLDBOARD TILT - DISCONTINUED (CROSS)

**DISCONTINUED**  
FOR REPLACEMENT  
PARTS ONLY  
THRU S/N 10666

## FOR PLANER WHEEL



**NOTE:** Cylinders are either "Cross" or "Lantex". "Lantex" is stamped on Barrel. "Cross" Cylinders have no identification. Observe which Cylinder you have for parts replacement.

OLD STYLE - 3" BORE

ITEM	PART NO.	QTY.	DESCRIPTION
1	B69135A	1	COMPLETE CYLINDER W/ CLEVIS PIN
2	651132	2	HYDRAULIC HOSE
3	5B9180	8	HEX NUT
	5B8130	8	HEX NUT
4	162012	2	COTTER PIN
5	5B61601	1	HEX NUT
6	6511322	1	BOLT
7	691351	1	PISTON NUT
8	6511314	1	CLEVIS PIN
9	69135A2	1	CLEVIS BASE
10	6913010	1	TUBE
11	6913011	1	PISTON
12	6913012	1	ROD
	691353	1	ROD
13	6913013	1	HEAD
	69130A13	1	HEAD
14	651303	1	CLEVIS, PISTON ROD
	691354	1	CLEVIS, PISTON ROD
15	6913014	4	TIE ROD
	69130A14	4	TIE ROD
16	65130A14	1	PIPE PLUG
17	691356	1	CLEVIS BASE PIN

DISCONTINUED FOR REPLACEMENT PARTS ONLY THRU S/N 10666

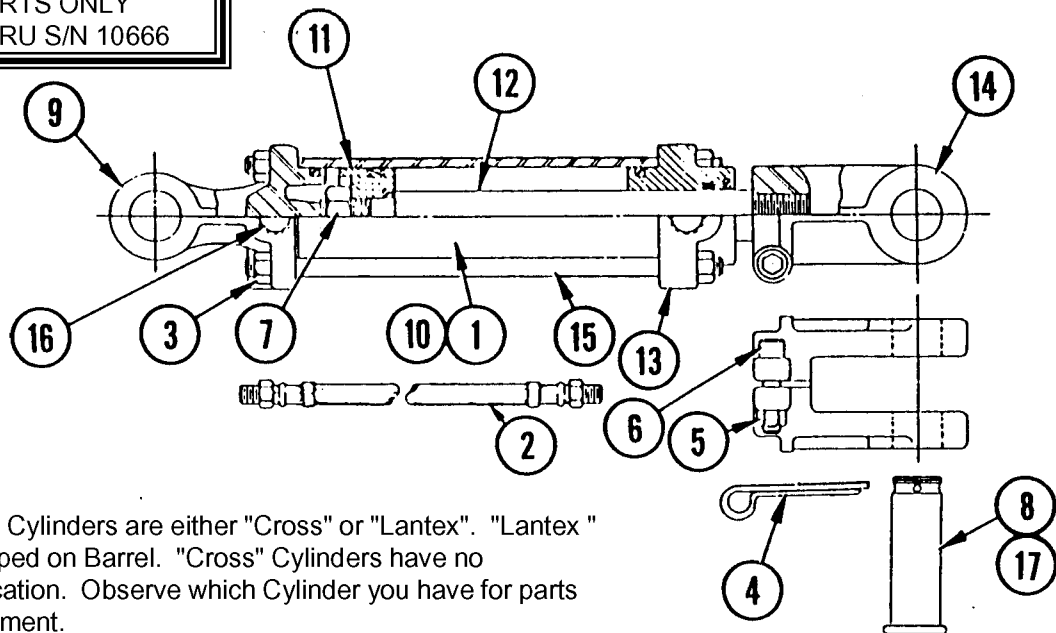
SEAL KITS: CROSS - 6913015

OLD STYLE - 3" BORE

# HYDRAULIC CYLINDER-MOLDBOARD TILT - DISCONTINUED (LANTEX)

**DISCONTINUED**  
FOR REPLACEMENT  
PARTS ONLY  
THRU S/N 10666

## FOR PLANER WHEEL



**NOTE:** Cylinders are either "Cross" or "Lantex". "Lantex" is stamped on Barrel. "Cross" Cylinders have no identification. Observe which Cylinder you have for parts replacement.

OLD STYLE - 3" BORE

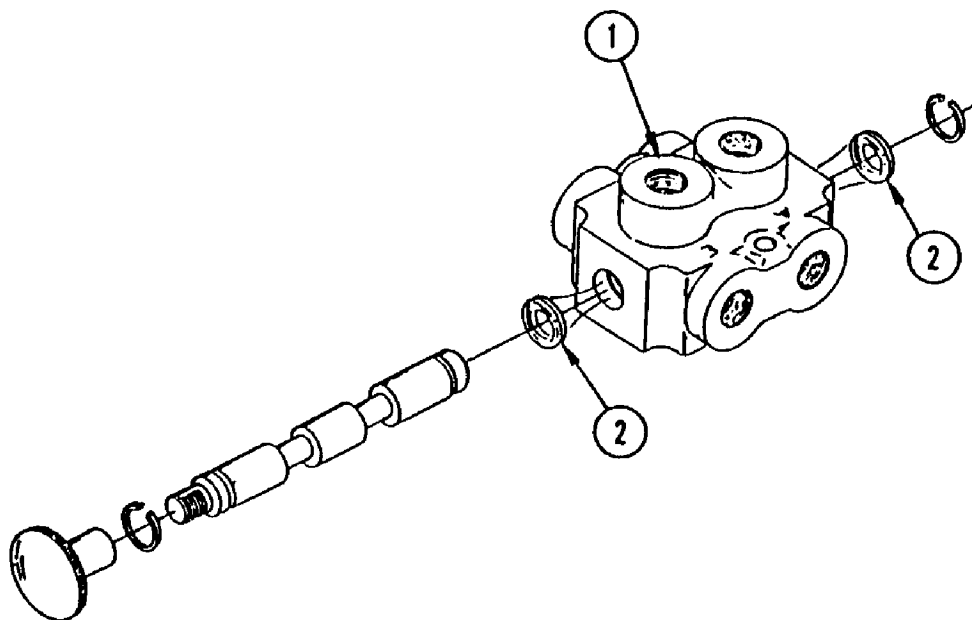
ITEM	PART NO.	QTY.	DESCRIPTION
1	B69135A	1	COMPLETE CYLINDER W/ CLEVIS PIN
2	651132	2	HYDRAULIC HOSE
3	5B8200	8	HEX NUT
4	162012	2	COTTER PIN
5	5B6240	1	HEX NUT
6	7362414	1	BOLT
7	691351	1	PISTON NUT
8	6511314	1	CLEVIS PIN
9	0691350014	1	CLEVIS BASE
10	0691350006	1	TUBE
11	0691350004	1	PISTON
12	0691350005	1	ROD
13	0691350010	1	HEAD
14	0651130022	1	CLEVIS, PISTON ROD
15	0691350011	4	TIE ROD

SEAL KITS: LANTEX - 0651130013

OLD STYLE - 3" BORE

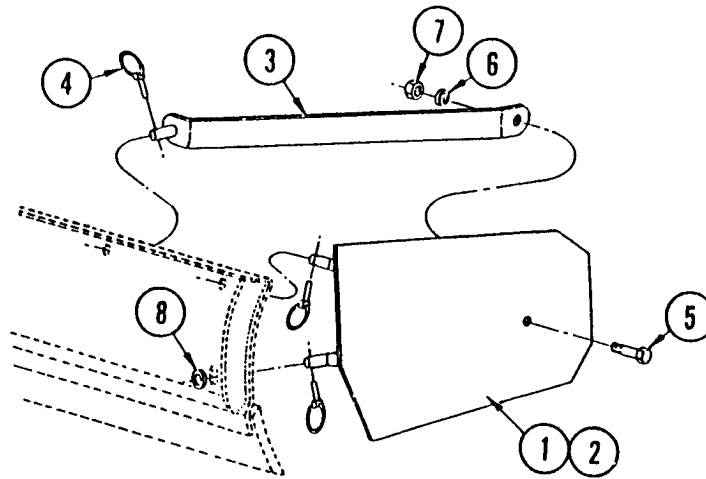
DISCONTINUED FOR REPLACEMENT PARTS ONLY THRU S/N 10666

## SELECTOR VALVE



ITEM	PART NO.	QTY.	DESCRIPTION
1	0781300000	1	SELECTOR VALVE COMPLETE
2	0781300005	2	SEAL

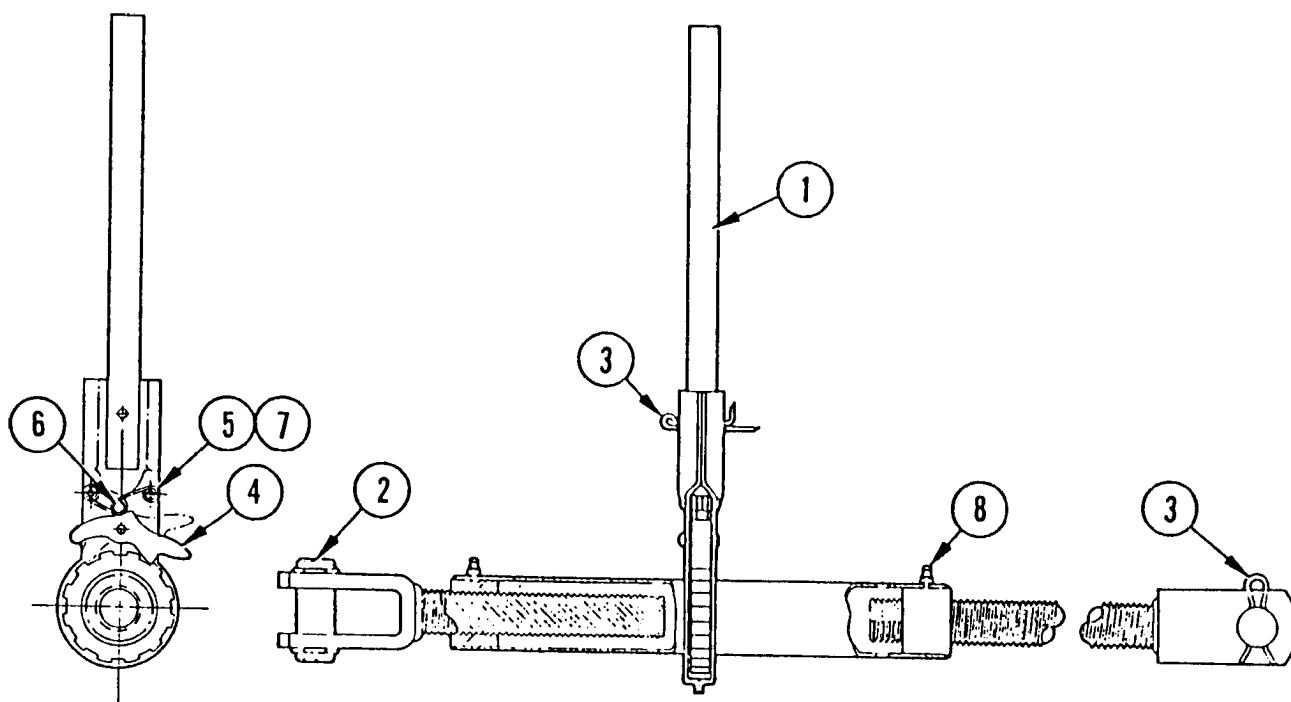
## END PLATES



ITEM	PART NO.	QTY.	DESCRIPTION
1	0591240000	1	COMPLETE SET OF END PLATES
2	0591240110	1	LEFT END PLATE WELDMENT
	0591240210	1	RIGHT END PLATE WELDMENT (SHOWN)
3	0591240300	2	BRACE WELDMENT
4	0691360001	6	KLIK PIN
5	7A101112	2	BOLT
6	131000	2	LOCKWASHER
7	5B10110	2	HEX NUT
8	15B1000	2	FLATWASHER



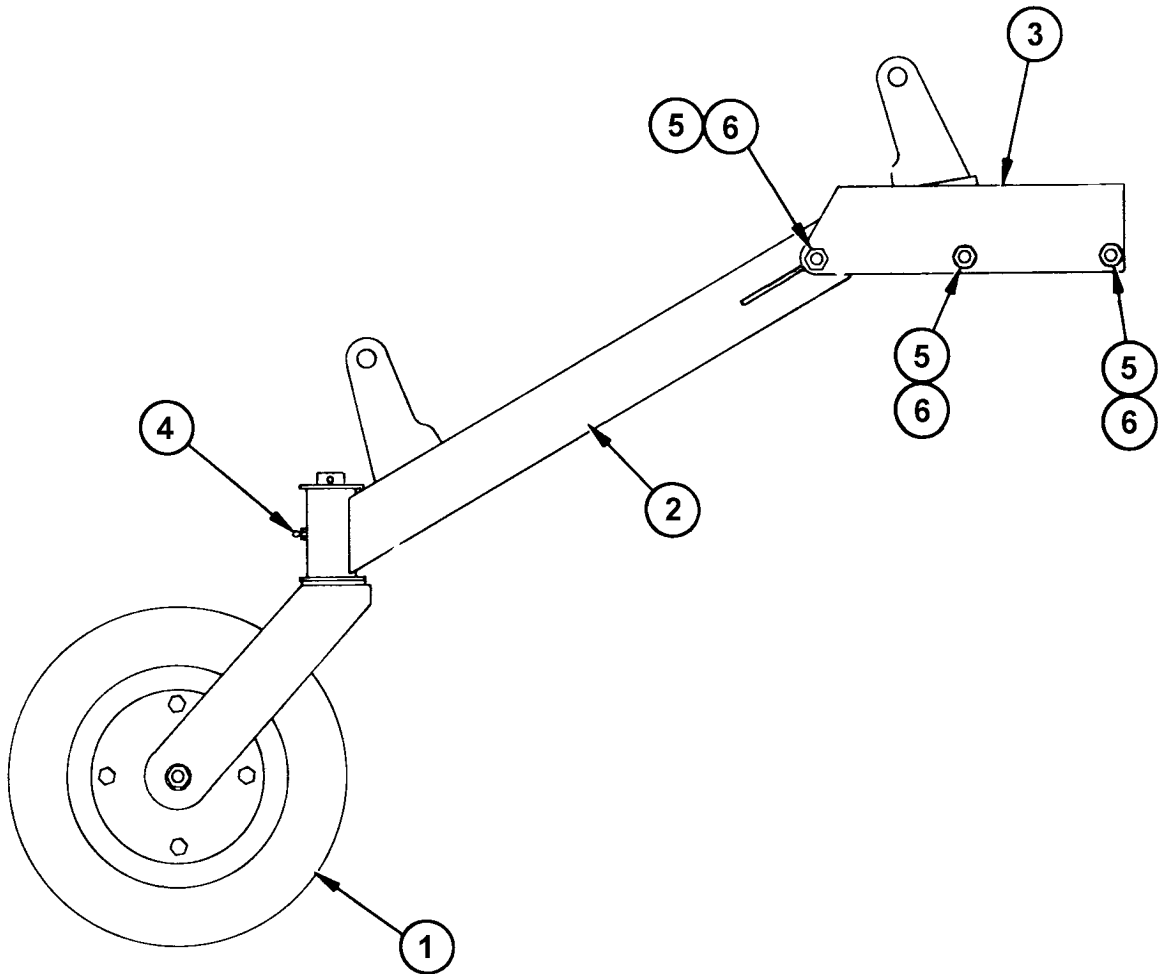
# RATCHET-TYPE LIFT SCREW



ITEM	PART NO.	QTY.	DESCRIPTION
1	584102	1	HANDLE
2	0584100003	2	CLEVIS PIN
3	163012	4	COTTER PIN
4	584101B	1	PAWL
5	584101C	1	SPRING
6	584101H	1	RIVET
7	584101J	2	RIVET
8	651062F	1	GREASE FITTING

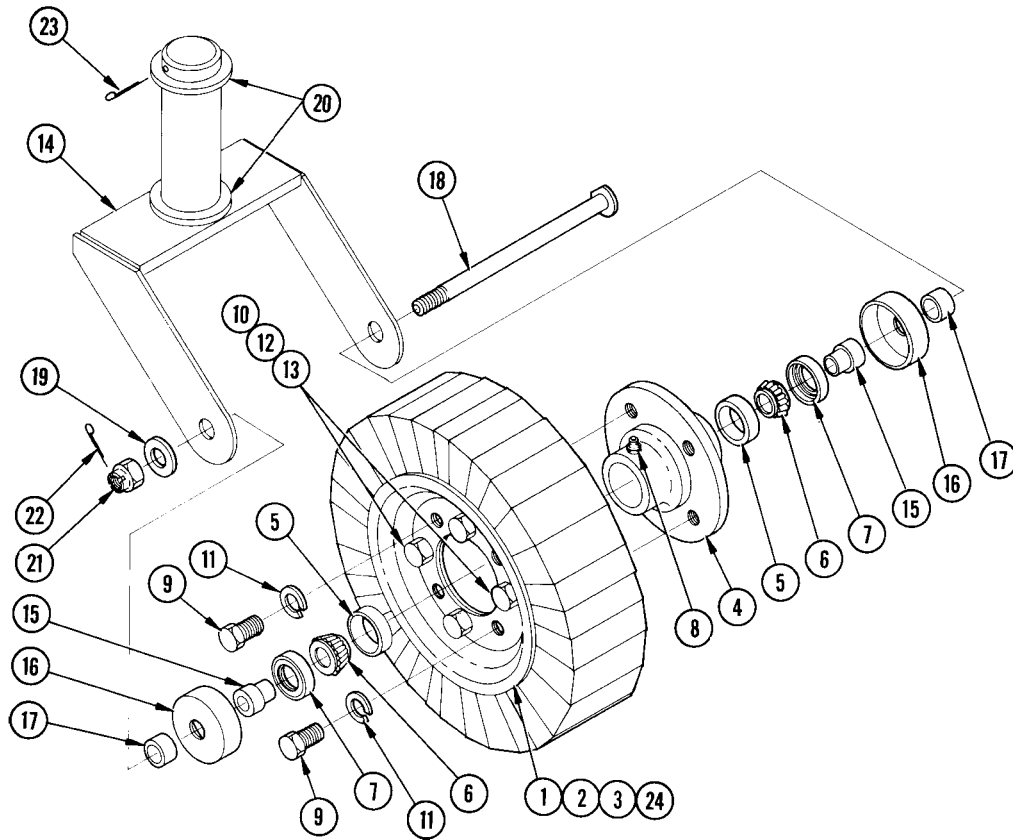
NOTE: BODY OF LIFT SCREW NOT OFFERED AS REPLACEMENT PART.  
ORDER COMPLETE UNIT FORM WHOLEGOODS CATALOG. (B58410)

# PLANNER WHEEL ASSEMBLY



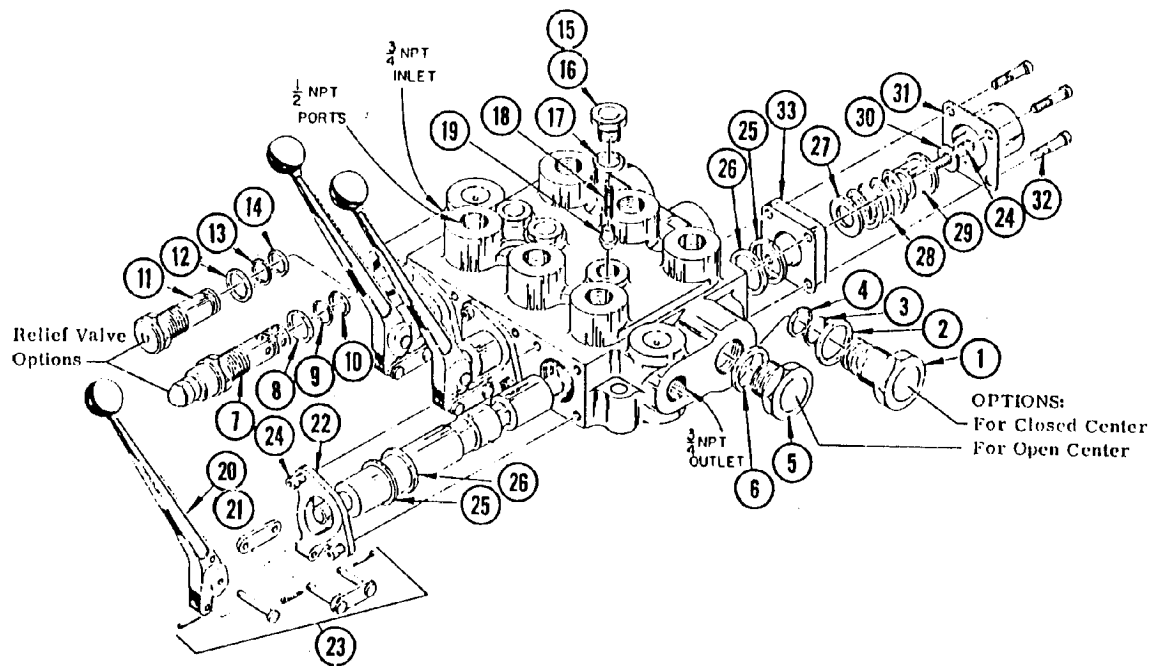
ITEM	PART NO.	QTY.	DESCRIPTION
1	B742023	1	CASTER FORK & WHEEL
2	00768322	1	BEAM
3	00768353	1	BRACKET
4	4720	1	GREASE FITTING
5	00695100	3	LOCKNUT
6	00750233	3	BOLT

# TAILWHEEL ASSEMBLY



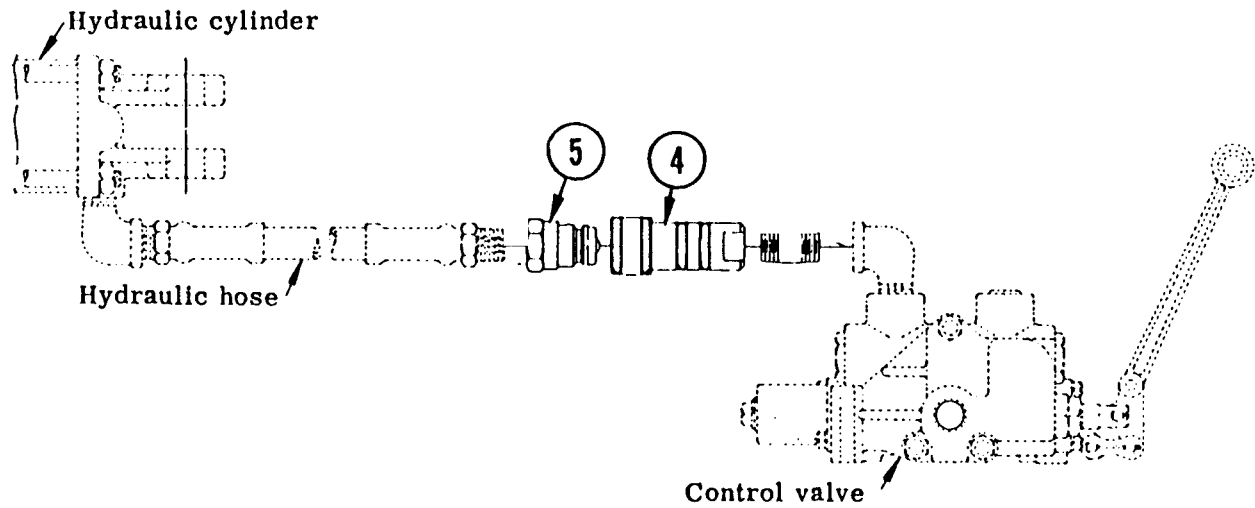
ITEM	PART NO.	QTY.	DESCRIPTION
1	373024	1	WHEEL ASSEMBLY
2	373024A	1	TIRE
3	373024B	1	8" DIA. WHEEL (BOLT ASSY)
4	373024D	1	HUB ASSEMBLY (WITH BOLTED ASSY)
5	00750621	2	BEARING CUP
6	373024F	2	BEARING CONE
7	373024E	2	GREASE SEAL
8	00752670	1	GREASE FITTING
9	7A8208	4	BOLT
10	7A6166	4	BOLT
11	00001300	4	LOCKWASHER
12	00012101	4	LOCKWASHER
13	00013901	4	NUT
14	742024	1	FORK
15	37302C2C	2	SHOULDER SLEEVE
16	37302D2B	2	DUST CAP
17	511016	2	SPACER BUSHING
18	37302D2A	1	SPINDLE BOLT
19	15B1200	1	WASHER
20	15B2400	2	WASHER
21	5DR12160	1	CASTLE NUT
22	162012	1	COTTER PIN
23	00758899	1	COTTER PIN
24	373024H	(REF)	TIRE AND WHEEL (BOLTED ASSY. ONLY, LESS HUB)

# CONTROL VALVE ASSEMBLY



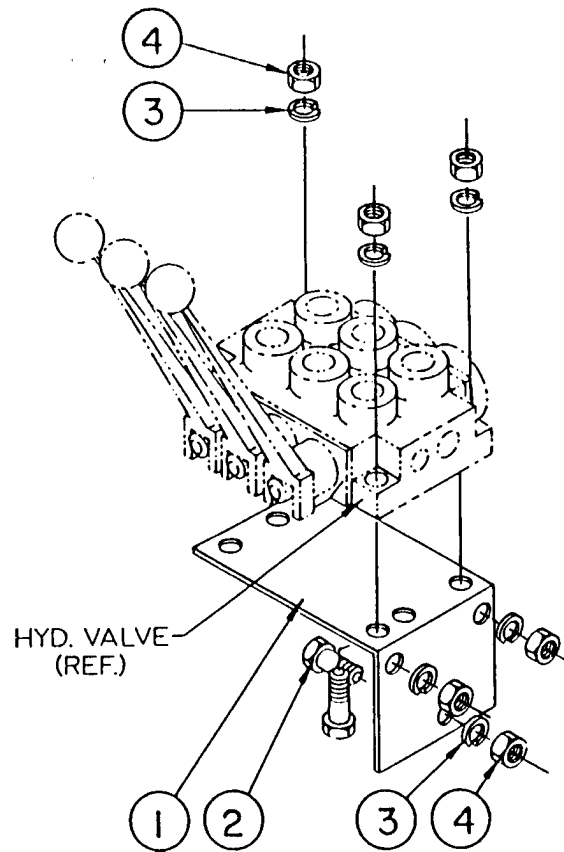
ITEM	PART NO.	QTY.	DESCRIPTION
-	<b>0691700000</b>	<b>1</b>	<b>CONTROL VALVE COMPLETE (OPEN CENTER)</b>
-	<b>0691710000</b>	<b>1</b>	<b>CONTROL VALVE COMPLETE (CLOSED CENTER)</b>
1	6514042	1	CLOSED CENTER PLUD ASSY. (INCL.2,3,& 4)
2	6514041	1	O-RING SEAL
3	6514044	1	BACKUP WASHER
4	65114045	1	O-RING SEAL
5	6514039	1	CONVERSION PLUG ASSY. (FOR OPEN CENTER)
6	6514041	1	O-RING SEAL
7	0691700001	1	ADJ. RELIEF ASSEMBLY (INCL. 10-13)
8	6514034	1	O-RING SEAL
9	6514035	1	BACKUP WASHER
10	6514036	1	O-RING SEAL
11	6514037	1	NO-RELIF ASSEMBLY (INCL. 12-14)
12	6514034	1	O-RING SEAL
13	6514035	1	BACKUP WASHER
14	6514036	1	O-RING SEAL
15	0691700003	3	CHECK PLUG (INCL. 16 & 17)
16	6514029	3	PLUG ONLY
17	6514028	3	O-RING SEAL
18	6514027	3	SPRING
19	6514026	3	LOAD CHECK POPPET
20	65140A49	3	HANDLE & BRACKET ASSY (INCL 21-23)
21	65140A47	3	HANDLE
22	65140A46	3	HANDLE BRACKET
23	65140A48	3	PIN KIT
24	7E4204	9	BOLT
25	6514012	6	O-RING SPOOL WASHER
26	6514013	6	SPOOL SEAL
27	6514018	3	STOP WASHER
28	6514019	3	SRPING
29	6514020	3	STOP COLLAR
30	6514021	3	WASHER
31	6514022	3	END CAP
32	7E4206	12	BOLT
33	6514014	3	PLATE

# HYDRAULIC HOSE CONNECTIONS



ITEM	PART NO.	QTY.	DESCRIPTION
4	651311	1	COUPLER
5	651312	1	TIP

## BRACKET ASSY - CONTROL VALVE



ITEM	PART NO.	QTY.	DESCRIPTION
1	B651401	1	BRACKET W/FASTENERS
2	7A51816	6	BOLT
3	13500	6	LOCKWASHERS
4	5B5180	6	HEX NUT

# SAFETY DECAL SHEETS



1

ITEM	PART NO.	QTY.	DESCRIPTION
1	00776481	1	SHEET,MANUALCANISTER DECAL
2	00773399	1	SHEET,950 BLADE DECAL
3	1458392	1	DECAL,RED REFLECTOR (NOT SHOWN)
4	1458393	1	DECAL,YELLOW REFLECTOR (NOT SHOWN)

# SERVIS-RHINO

## LIMITED WARRANTY

### 1. LIMITED WARRANTIES

- 1.01. Servis-Rhino warrants for one year from the purchase date to the original non-commercial, governmental, or municipal purchaser ("Purchaser") and warrants for six months to the original commercial or industrial purchaser ("Purchaser") that the goods purchased are free from defects in material or workmanship.
- 1.02. Manufacturer will replace for the Purchaser any part or parts found, upon examination at one of its factories, to be defective under normal use and service due to defects in material or workmanship.
- 1.03. This limited warranty does not apply to any part of the goods which has been subjected to improper or abnormal use, negligence, alteration, modification, or accident, damaged due to lack of maintenance or use of wrong fuel, oil, or lubricants, or which has served its normal life. This limited warranty does not apply to any part of any internal combustion engine, or expendable items such as blades, shields, guards, or pneumatic tires except as specifically found in your Operator's Manual.
- 1.04. Except as provided herein, no employee, agent, Dealer, or other person is authorized to give any warranties of any nature on behalf of Manufacturer.

### 2. REMEDIES AND PROCEDURES.

- 2.01. This limited warranty is not effective unless the Purchaser returns the Registration and Warranty Form to Manufacturer within 30 days of purchase.
- 2.02. Purchaser claims must be made in writing to the Authorized Dealer ("Dealer") from whom Purchaser purchased the goods or an approved Authorized Dealer ("Dealer") within 30 days after Purchaser learns of the facts on which the claim is based.
- 2.03. Purchaser is responsible for returning the goods in question to the Dealer.
- 2.04. If after examining the goods and/or parts in question, Manufacturer finds them to be defective under normal use and service due to defects in material or workmanship, Manufacturer will:
  - (a) Repair or replace the defective goods or part(s) or
  - (b) Reimburse Purchaser for the cost of the part(s) and reasonable labor charges (as determined by Manufacturer) if Purchaser paid for the repair and/or replacement prior to the final determination of applicability of the warranty by Manufacturer.The choice of remedy shall belong to Manufacturer.
- 2.05. Purchaser is responsible for any labor charges exceeding a reasonable amount as determined by Manufacturer and for returning the goods to the Dealer, whether or not the claim is approved. Purchaser is responsible for the transportation cost for the goods or part(s) from the Dealer to the designated factory.

### 3. LIMITATION OF LIABILITY.

- 3.01. MANUFACTURER DISCLAIMS ANY EXPRESS (EXCEPT AS SET FORTH HEREIN) AND IMPLIED WARRANTIES WITH RESPECT TO THE GOODS INCLUDING, BUT NOT LIMITED TO, MERCHANTABILITY AND FITNESS FOR A PARTICULAR PURPOSE.
- 3.02. MANUFACTURER MAKES NO WARRANTY AS TO THE DESIGN, CAPABILITY, CAPACITY, OR SUITABILITY FOR USE OF THE GOODS.
- 3.03. EXCEPT AS PROVIDED HEREIN, MANUFACTURER SHALL HAVE NO LIABILITY OR RESPONSIBILITY TO PURCHASER OR ANY OTHER PERSON OR ENTITY WITH RESPECT TO ANY LIABILITY, LOSS, OR DAMAGE CAUSED OR ALLEGED TO BE CAUSED DIRECTLY OR INDIRECTLY BY THE GOODS INCLUDING, BUT NOT LIMITED TO, ANY INDIRECT, SPECIAL, CONSEQUENTIAL, OR INCIDENTAL DAMAGES RESULTING FROM THE USE OR OPERATION OF THE GOODS OR ANY BREACH OF THIS WARRANTY. NOTWITHSTANDING THE ABOVE LIMITATIONS AND WARRANTIES, MANUFACTURER'S LIABILITY HEREUNDER FOR DAMAGES INCURRED BY PURCHASER OR OTHERS SHALL NOT EXCEED THE PRICE OF THE GOODS.
- 3.04. NO ACTION ARISING OUT OF ANY CLAIMED BREACH OF THIS WARRANTY OR TRANSACTIONS UNDER THIS WARRANTY MAY BE BROUGHT MORE THAN TWO (2) YEARS AFTER THE CAUSE OF ACTION HAS OCCURRED.

### 4. MISCELLANEOUS.

- 4.01. Proper Venue for any lawsuits arising from or related to this limited warranty shall be only in Guadalupe County, Texas.
- 4.02. Manufacturer may waive compliance with any of the terms of this limited warranty, but no waiver of any terms shall be deemed to be a waiver of any other term.
- 4.03. If any provision of this limited warranty shall violate any applicable law and is held to be unenforceable, then the invalidity of such provision shall not invalidate any other provisions herein.
- 4.04. Applicable law may provide rights and benefits to purchaser in addition to those provided herein.

### KEEP FOR YOUR RECORDS

ATTENTION: Purchaser should fill in the blanks below for his reference when buying repair parts and/or for proper machine identification when applying for warranty.

Servis-Rhino Implement Model \_\_\_\_\_ Serial Number \_\_\_\_\_

Date Purchased \_\_\_\_\_ Dealer \_\_\_\_\_

ATTENTION:  
READ YOUR OPERATOR'S MANUAL

**RHINO®**  
1020 S. Sangamon Ave.  
Gibson City, IL 60936  
800-446-5158  
Email: parts@servis-rhino.com







## TO THE OWNER/OPERATOR/DEALER

To keep your implement running efficiently and safely, read your manual thoroughly and follow these directions and the Safety Messages in this Manual. The Table of Contents clearly identifies each section where you can easily find the information you need.

The OCCUPATIONAL SAFETY AND HEALTH ACT (1928.51 Subpart C) makes these minimum safety requirements of tractor operators:

### REQUIRED OF THE OWNER:

1. Provide a Roll-Over-Protective Structure that meets the requirements of this Standard; and
2. Provide Seatbelts that meet the requirements of this paragraph of this Standard and SAE J4C; and
3. Ensure that each employee uses such Seatbelt while the tractor is moving; and
4. Ensure that each employee tightens the Seatbelt sufficiently to confine the employee to the protected area provided by the ROPS.

### REQUIRED OF THE OPERATOR

1. Securely fasten seatbelt if the tractor has a ROPS.
2. Where possible, avoid operating the tractor near ditches, embankments, and holes.
3. Reduce speed when turning, crossing slopes, and on rough, slick, or muddy surfaces.
4. Stay off slopes too steep for safe operation.
5. Watch where you are going - especially at row ends, on roads, and around trees.
6. Do not permit others to ride.
7. Operate the tractor smoothly - no jerky turns, starts, or stops.
8. Hitch only to the drawbar and hitch points recommended by the tractor manufacturer.
9. When the tractor is stopped, set brakes securely and use park lock, if available.



**Keep children away from danger all day, every day...**



**Equip tractors with rollover protection (ROPS) and keep all machinery guards in place...**



**Please work, drive, play and live each day with care and concern for your safety and that of your family and fellow citizens.**

