



RHP8 HAY RAKE  
RHP10 HAY RAKE  
RHP12 HAY RAKE

SUSPENSION RAKE

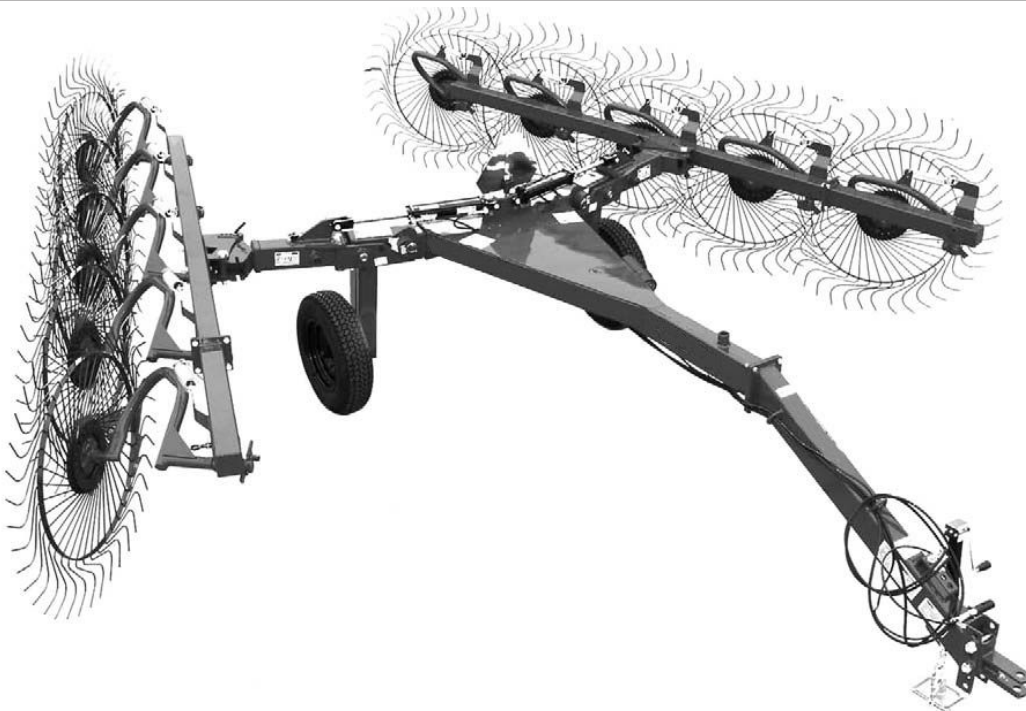
Rev 06-15

MATERIAL HANDLING PARTS MANUAL

## PART'S MANUAL



An Operator's Manual was shipped with the equipment in the Manual Canister. This Operator's Manual is an integral part of the safe operation of this machine and must be maintained with the unit at all times. **READ, UNDERSTAND, and FOLLOW** the Safety and Operation Instructions contained in this manual before operating the equipment. If the Operator's Manual is not with the equipment, contact your dealer or Servis-Rhino (800-446-5158) to obtain a Free copy before operating the equipment.



**RHINO®**

1020 S. Sangamon Ave.  
Gibson City, IL 60936  
800-446-5158

Email: [parts@servis-rhino.com](mailto:parts@servis-rhino.com)

**ATENCIÓN!**

Si No Lee Ingles, Pida Ayuda a Alguien  
Que Si Lo Lea Para Que le Traduzca las  
Medidas de Seguridad.

LEA EL INSTRUCTIVO



© 2034 Alamo Group Inc.

## To the Owner/Operator/Dealer

All implements with moving parts are potentially hazardous. There is no substitute for a cautious, safe-minded operator who recognizes the potential hazards and follows reasonable safety practices. The manufacturer has designed this implement to be used with all its safety equipment properly attached to minimize the chance of accidents.

**BEFORE YOU START!** Read the safety messages on the implement and shown in your manual. Observe the rules of safety and common sense!



# DANGER

**FAILING TO FOLLOW SAFETY MESSAGES AND OPERATING INSTRUCTION CAN CAUSE SERIOUS BODILY INJURY OR EVEN DEATH TO OPERATOR AND OTHERS IN THE AREA.**

1. 

2. NO RIDERS. NO CHILDREN OPERATORS 

3. USE SAFETY SHOES, HARD HAT, SAFETY GLASSES, SEAT BELTS, ROPS & OPS. 

4. BLOCK UP SECURELY BEFORE WORKING UNDER. 

1. Study and understand Operator's Manuals, Safety Decals, and Instructional Decals for tractor and implement to prevent misuse, abuse, and accidents. Practice before operating in a confined area or near passersby.
  - Learn how to stop engine suddenly in an emergency. Be alert for passersby and especially children.
2. Allow no children on or near folding mower or tractor. Allow no riders on tractor or implement. Falling off may cause serious injury or death from being run over by tractor or mower or contact with rotating blades.
3. Operate only with tractor having Roll-Over Protective Structure (ROPS) and with seat belt securely fastened to prevent injury and possible death from falling off or tractor overturn.
  - Personal Protective Equipment such as Hard Hat, Safety Glasses, Safety Shoes, & Ear Plugs are recommended.
4. Block up or support raised machine and all lifted components securely before putting hands or feet under or working underneath any lifted component to prevent crushing injury or death from sudden dropping or inadvertent operation of controls. Make certain area is clear before lowering or folding.
5. Before transporting, put Lift Lever in detent or full-lift position. Install Transport Safety Devices securely on folding mowers. Put Booms securely in Transport Rest.
  - Folding and Boom Mowers have raised center of gravity. Slow down when turning and on hillsides.
6. Make certain that SMV sign, warning lights, and reflectors are clearly visible. Follow local traffic codes.
7. Never operate with Cutting Head or Folding Section raised if passersby, bystanders, or traffic are in the area to reduce possibility of injury or death from objects thrown by Blades under Guards or mower structure.
8. Before dismounting, secure implement in transport position or lower to ground.
  - Put tractor in park position or set brake, disengage PTO, stop engine, remove key, and wait until noise of rotation has ceased to prevent crushing by entanglement in rotating parts which could cause injury or death.
  - Never mount or dismount a moving vehicle. Crushing from runover may cause serious injury or death.

5. TRANSPORT SAFELY, LOCK UP. 

6. USE SMV, LIGHTS, & REFLECTORS. 

7. DO NOT OPERATE WITH CUTTER OR WING RAISED 

8. DO NOT MOUNT OR DISMOUNT WHILE MOVING. 

02967827

### WARRANTY INFORMATION:

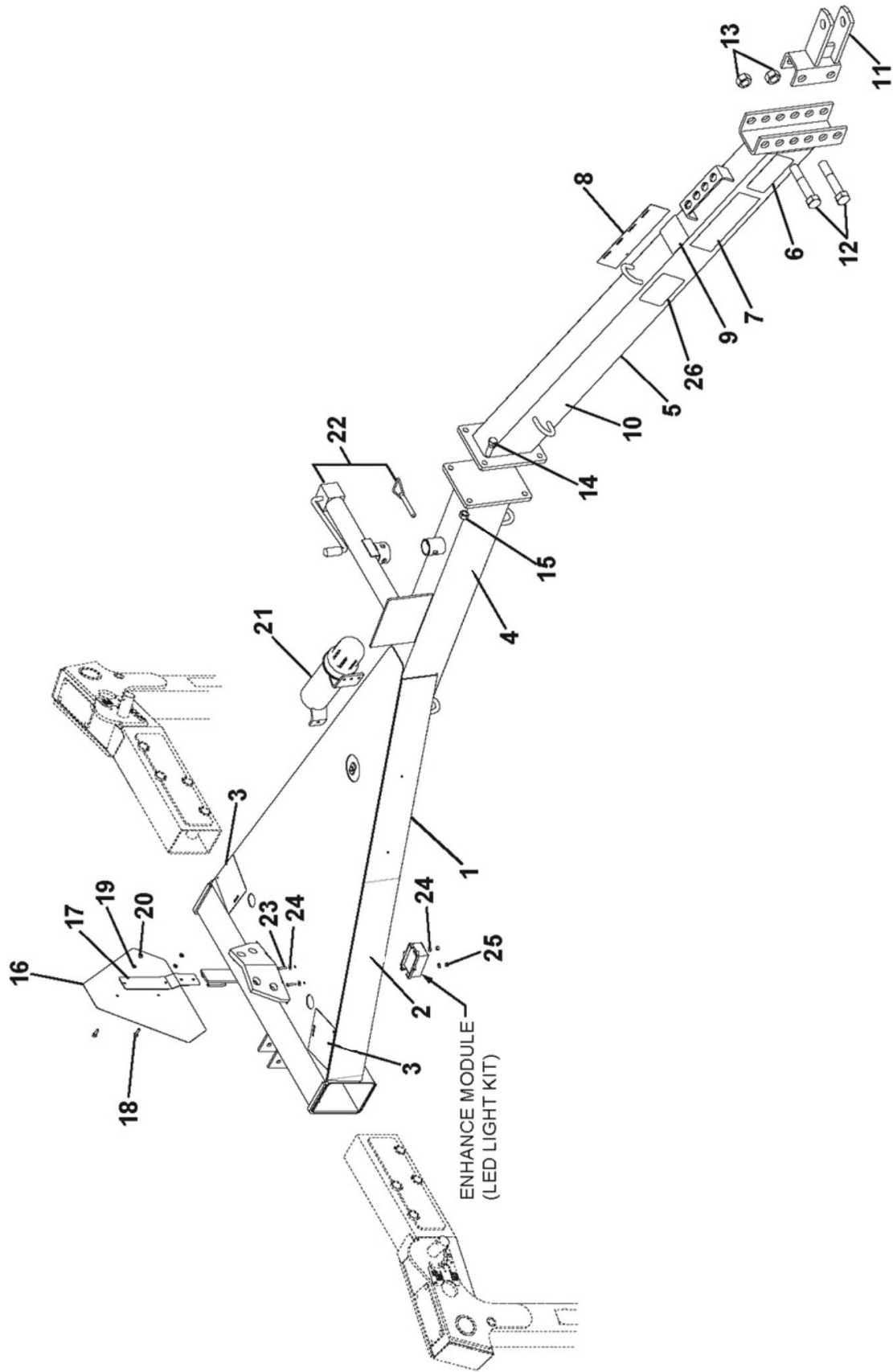
Read and understand the complete Warranty Statement found in this Manual. Fill out the Warranty Registration Form in full and return it to within 30 Days. Make certain the Serial Number of the Machine is recorded on the Warranty Card and on the Warranty Form that you retain.

# TABLE OF CONTENTS

## RHP SUSPENSION RAKE

ITEM	PAGE NUMBER
Center Frame & Related Parts - RHP8 & RHP10. ....	40-1-2, 40-1-3
Center Frame & Related Parts - RHP12 .....	40-1-4, 40-1-5
RH Wheel Arm Assy, Short Arm Assy and Wing Frame .....	40-1-6, 40-1-7
LH Wheel Arm Assy, Short Arm Assy and Wing Frame .....	40-1-8, 40-1-9
Wheels & LH & RH Rake Arm Assembly .....	40-1-10, 40-1-11
Rake Arm Hub & Spindle Assembly .....	40-1-12
Hydraulic Kit .....	40-1-13
Hydraulic Cylinder - Kicker Wheel .....	40-1-14
Hydraulic Cylinder - Wing Lift .....	40-1-15
Kicker Wheel Kit (Optional) .....	40-1-16
Hydraulic Kit, Kicker Wheel (Optional) .....	40-1-17
Rake Wheel & Tire Assembly .....	40-1-18
Led Light Kit (Rear Light Only) .....	40-1-19
Led Light Kit (Breakdown) .....	40-1-20

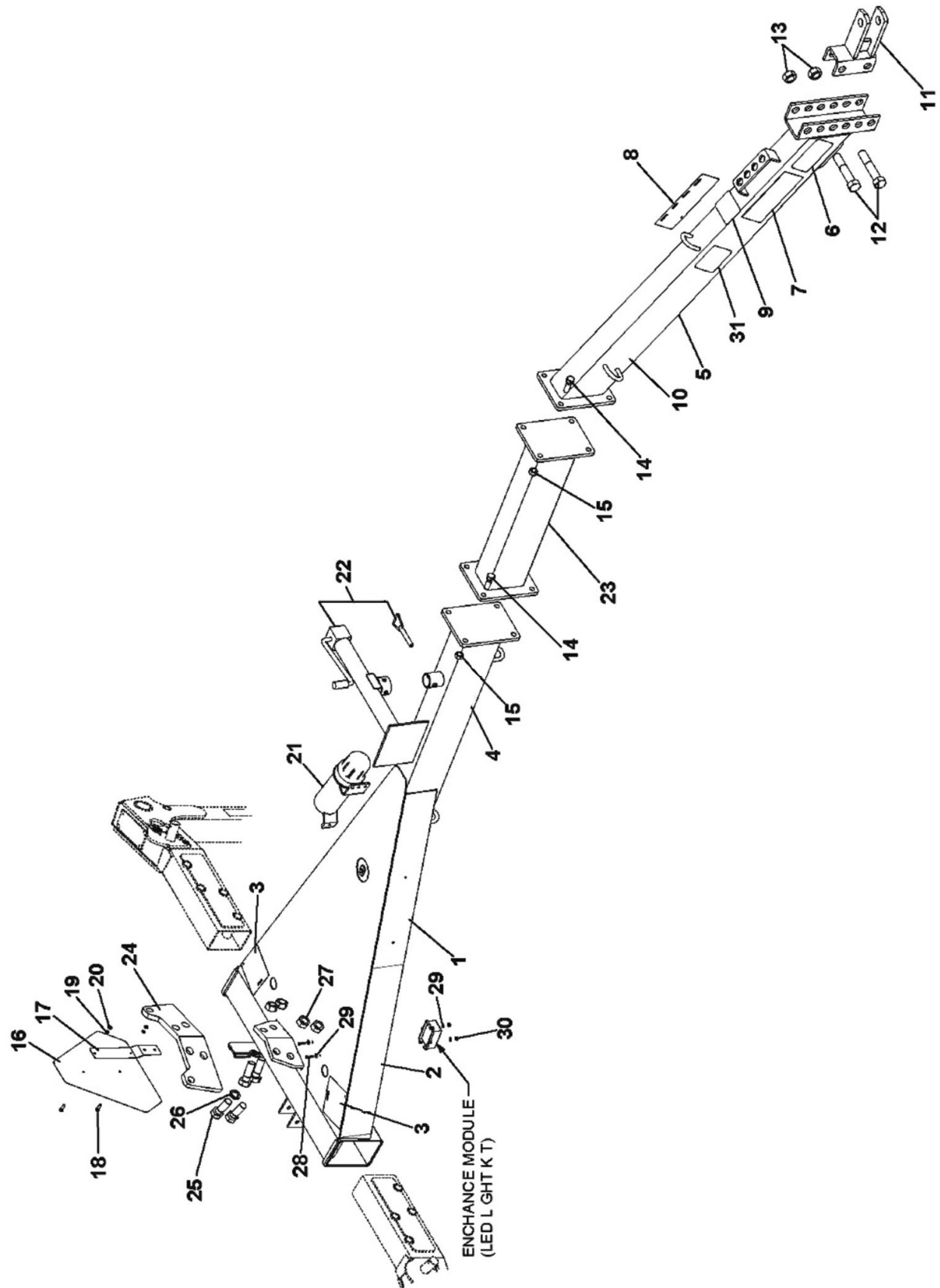
**CENTER FRAME  
AND RELATED PARTS  
MODELS RHP8 & RHP10**



# **CENTER FRAME** **AND RELATED PARTS** **MODELS RHP8 & RHP10**

<b>Item</b>	<b>Part No.</b>	<b>Description</b>	<b>Qty.</b>
1	-----	Center Frame Weldment	1
2	50074267	Decal, Patriot	2
3	D617	Decal, Oil Leak High Pressure	2
4	D302	Decal, Rhino Logo	2
5	50073516-35	Tongue w/Deals	1
6	50073512	Decal, Important Chain	1
7	50073507	Decal, Warning Speed	1
8	D855	Decal, Danger - Multilingual	1
9	D880	Decal, Genuine Parts Warning	1
10	50074262	Decal, Model - RHP Series	2
11	50072954-35	Hitch Weldment	1
12	19137	Capscrew, 1" x 5-1/2" Gr 5	2
13	9163200	Locknut, 1" Gr C	2
14	45297BH	Capscrew, 5/8" x 2" Gr 5	4
15	9162000	Locknut, 5/8" Gr C	4
16	94359	Sign, SMV	1
17	2438621	Bracket, Spade - SMV Mounting	1
18	1160807	Capscrew, 1/4" x 7/8" Gr 5	2
19	15905	Lockwasher, 1/4"	2
20	15531BH	Hex Nut, 1/4"	2
21	50035829	Tube, Owner's Manual	1
22	50027925	Jackstand Assembly	1
23	4130610	Machine Screw, #10 x 1	2
24	17020600	Flatwasher, #10	4
25	44520BH	Locknut, #10	2
26	50074259	Decal, Made in USA	2

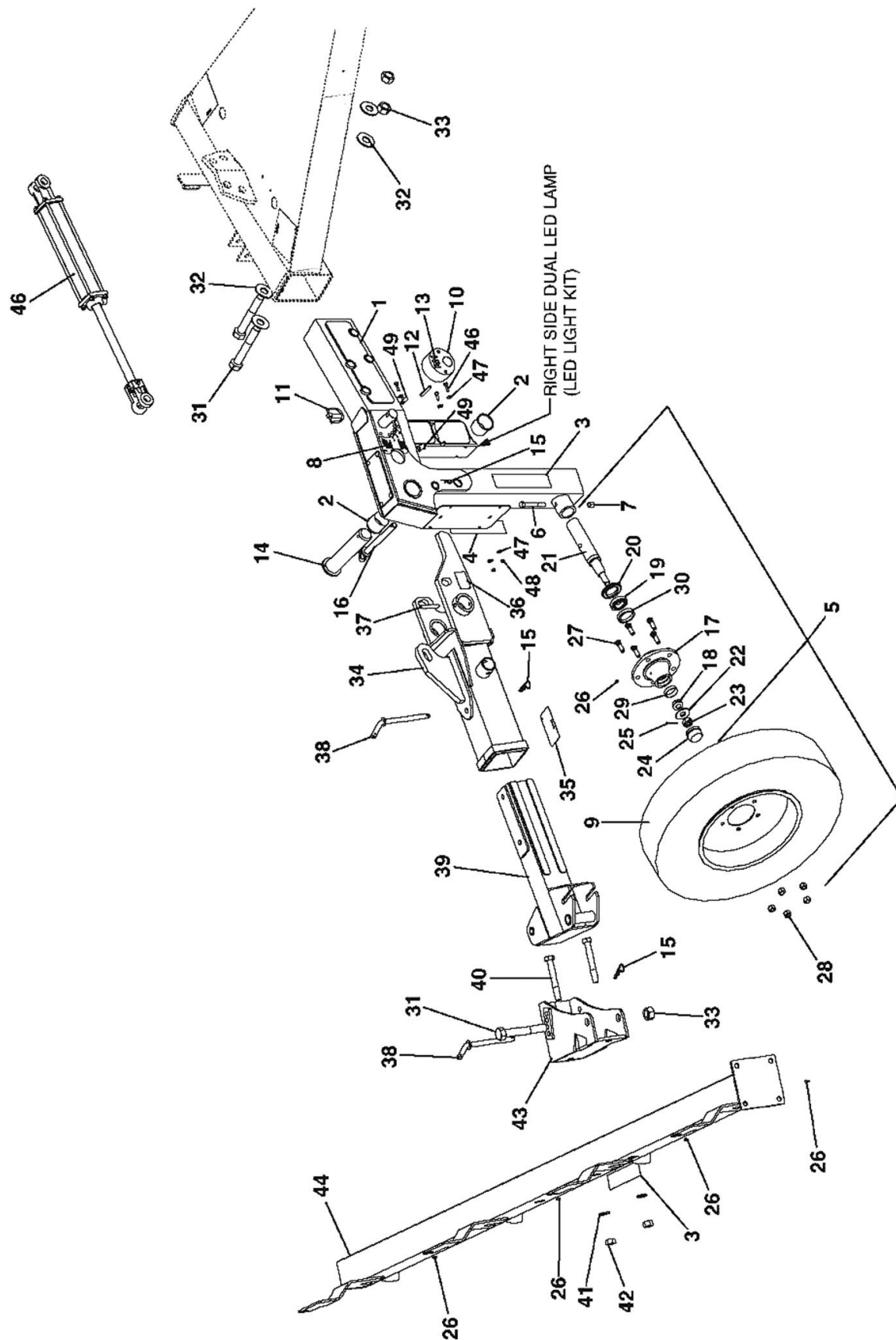
# CENTER FRAME AND RELATED PARTS MODELS RHP12



# **CENTER FRAME AND RELATED PARTS MODELS RHP12**

<b>Item</b>	<b>Part No.</b>	<b>Description</b>	<b>Qty.</b>
1	-----	Center Frame Weldment	1
2	50074267	Decal, Patriot	2
3	D617	Decal, Oil Leak High Pressure	2
4	D302	Decal, Rhino Logo	2
5	50073516	Tongue w/Decals	1
6	50073512	Decal, Important Chain	1
7	50073507	Decal, Warning Speed	1
8	D855	Decal, Danger - Multilingual	1
9	D880	Decal, Genuine Parts Warning	1
10	50074262	Decal, Model - RHP Series	2
11	50072954	Hitch Weldment	1
12	19137	Capscrew, 1" x 5-1/2" Gr 5	2
13	9163200	Locknut, 1" Gr C	2
14	45297BH	Capscrew, 5/8" x 2" Gr 5	8
15	9162000	Locknut, 5/8" Gr C	8
16	94359	Sign, SMV	1
17	2438621	Bracket, Spade - SMV Mounting	1
18	1160807	Capscrew, 1/4" x 7/8" Gr 5	2
19	15905	Lockwasher, 1/4"	2
20	15531BH	Hex Nut, 1/4"	2
21	50035829	Tube, Owner's Manual	1
22	50027925	Jackstand Assembly	1
23	50073481-35	Assembly, Tongue Extension	1
24	50074146-35	Plate, Cylinder Lug	1
25	20103	Capscrew, 1" x 3" Gr 5	4
26	-----	Flatwasher	2
27	9163200	Locknut, 1" Gr C	4
28	4130610	Machine Screw, #10 x 1	2
29	17020600	Flatwasher, #10	4
30	44520BH	Locknut, #10	2
31	50074259	Decal, Made in USA	2

# RIGHT HAND WHEEL ARM ASSEMBLY, SHORT ARM ASSEMBLY AND WING FRAME w/RELATED PARTS MODEL RHP8

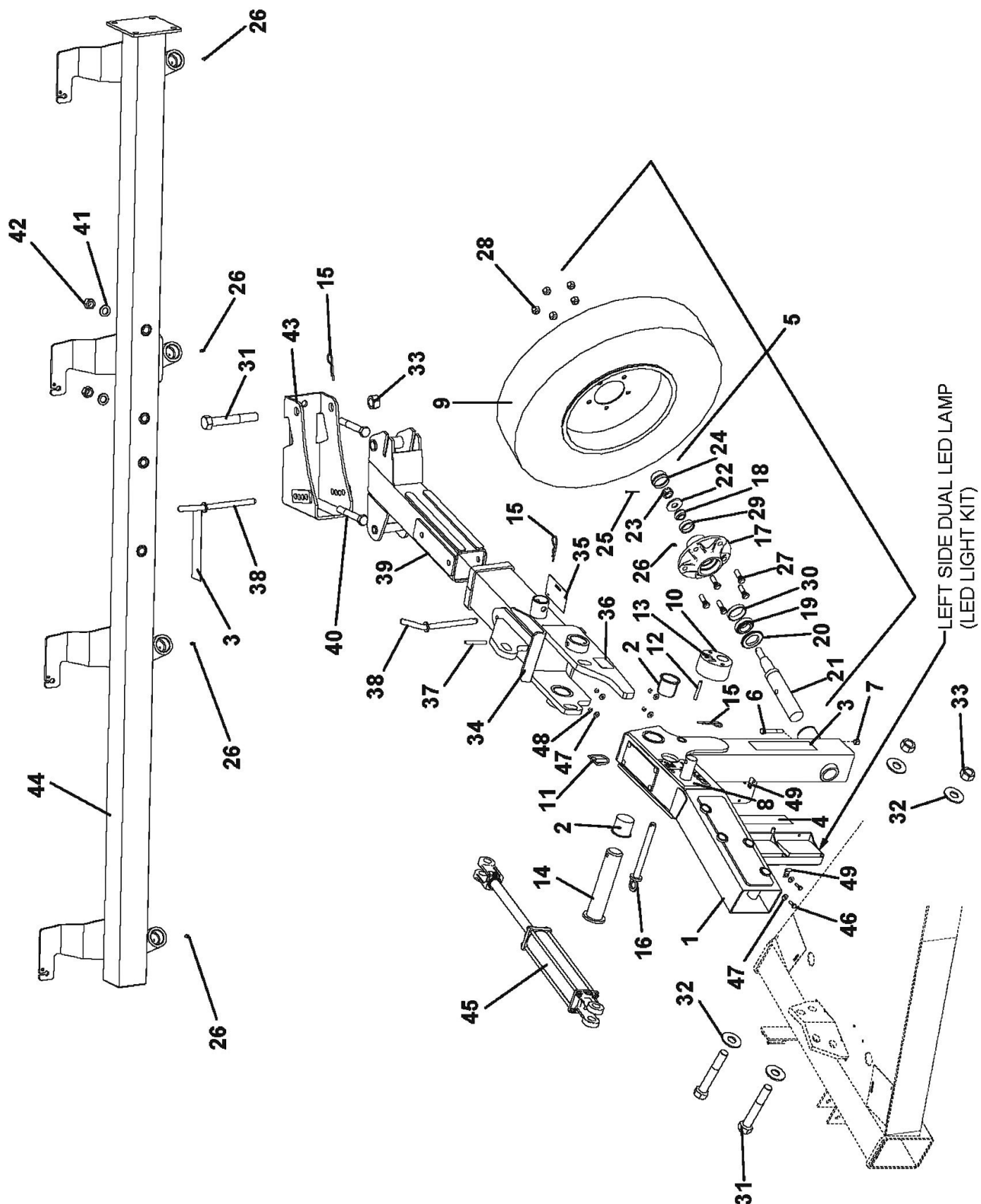




# RIGHT HAND WHEEL ARM ASSEMBLY, SHORT ARM ASSEMBLY AND WING FRAME w/RELATED PARTS MODEL RHP8

Item	Part No	Description	Qty	Item	Part No	Description	Qty
1	50074808-35	Wheel Arm Weldment, RH	1	26	449BH	Grease Fitting	5
2	50073080	Bushing, Rake Pivot	2	27	15445	Bolt, 1/2"-20 UNF x 1-5/8"	5
3	50031212	Reflector, Amber, 2" x 9"	2	28	15515BH	Nut, 1/2"-20 UNF	5
4	50031214	Reflector, Red	1	29	14-6-197	Bearing Cup	1
5	50073078	Hub & Spindle Assy, Rake Wheel	1	30	14-6-198	Bearing Cup	1
6	45187BH	Capscrew, 1/2" x 3-1/2" Gr 5	1	31	20063	Capscrew, 1" x 6-1/2" Gr 5	3
7	44539BH	Hex Nut, 1/2" Nylock	1	32	15908BH	Flatwasher, 1" Hard	4
8	50073496	Decal, Ground Pressure- RH	1	33	9163200	Locknut, 1" Gr C	3
9	50073077	Wheel & Tire Assembly, Rake	1	34	50073519-35	Short Arm Assy, RH w/Decals	1
10	50073093-35	Cam Assembly, RH	1		50073518-35	Short Arm Assy, LH w/Decals	1
11	50017304	Pin, Lynch	1	35	D628	Decal, Crushing Hazard	1
12	53065	Pin, Spiral 3/8" x 2-1/2"	1	36	50073511	Decal, Important Transport Latch	1
13	50073510	Decal, RH	1	37	44086BH	Pin, Spirol 3/8" x 3"	1
14	50072915	Pin Assembly, Pivot	1	38	50072951	Pin Assembly, Wing Angle	2
15	1273BH	Pin, Presto 9 Ga x 3" D Plated	3	39	50072895	Wing Arm Adjustment Assembly	1
16	50072918	Pin Assembly, Pivot Arm Lock	1	40	44429	Capscrew, 3/4" x 5-1/2" Gr 8	2
17	7977	Hub Assembly	1	41	45061BH	Flatwasher, 3/4" SAE	2
18	50073BH	Bearing, Cone Roller	1	42	44141	Hex Nut, 3/4"-10 UNC Gr 5	2
19	50076BH	Bearing, Cone Roller	1	43	50073502-35	Wing Set Plate Weldment	1
20	7967	Seal, Triple Lip	1	44	50073504-35	Wing Frame Weldment - RH	1
21	50072962	Spindle, Single - Rake	1	45	50073087	Cylinder, Hyd. 2.5" Bore x 12" Str.	1
22	15920	Flatwasher, 3/4"	1	46	44186BH	Capscrew, 1/4" x 1" Gr 5	4
23	120BH	Hex Nut, Slotted 3/4"-16 UNF	1	47	15918BH	Flatwasher, 1/4"	8
24	121BH	Cap, Hub	1	48	15608	Locknut, 1/4"	4
25	296	Pin, Cotter 1/8" x 1-1/2"	1	49	50074735	Cable Clamp	2

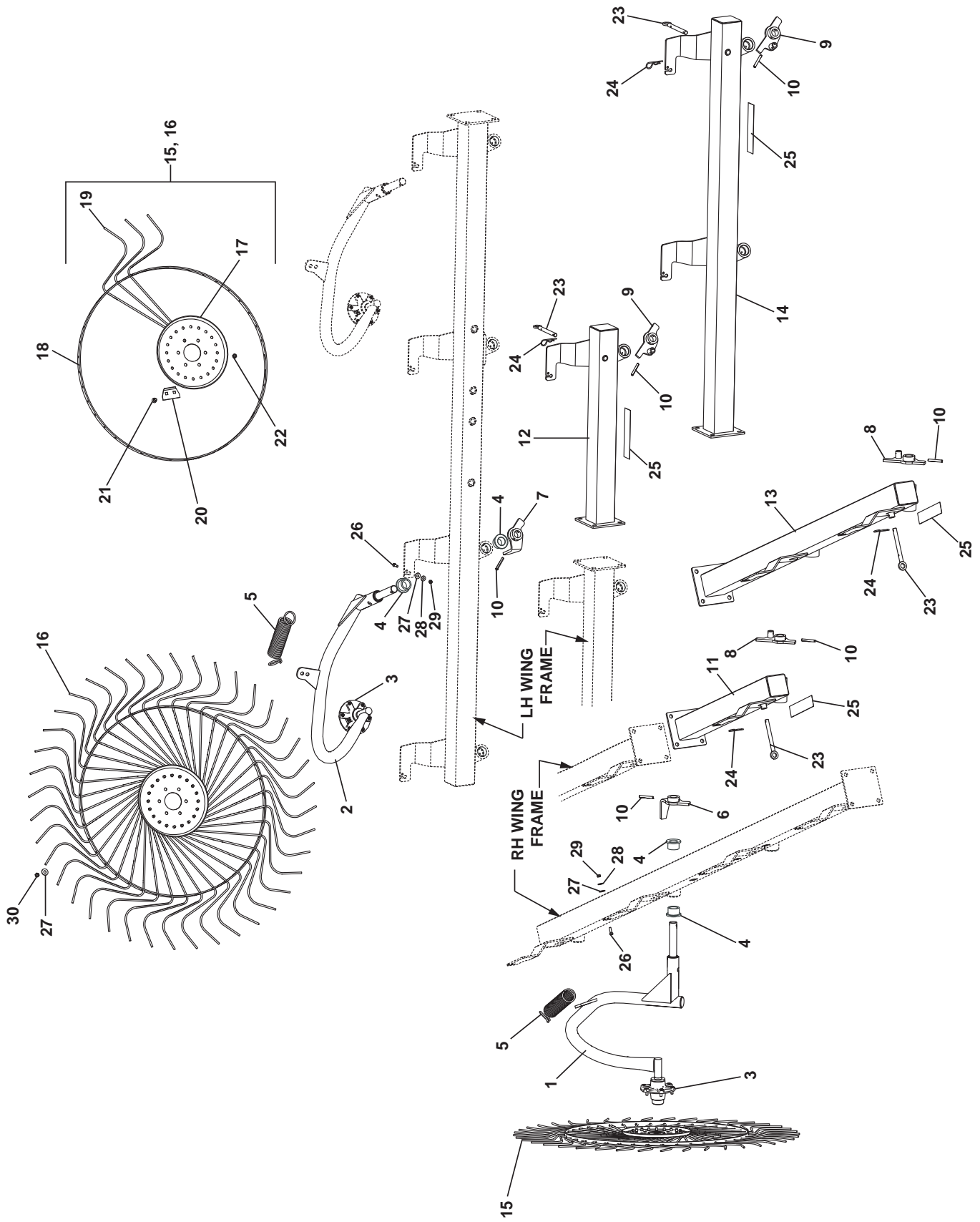
# LEFT HAND WHEEL ARM ASSEMBLY, SHORT ARM ASSEMBLY AND WING FRAME w/RELATED PARTS MODELS RHP10 & RHP12



# LEFT HAND WHEEL ARM ASSEMBLY, SHORT ARM ASSEMBLY AND WING FRAME w/RELATED PARTS MODELS RHP10 & RHP12

Item	Part No	Description	Qty	Item	Part No	Description	Qty
1	50074809-35	Wheel Arm Weldment, LH	1	26	449BH	Grease Fitting	5
2	50073080	Bushing, Rake Pivot	2	27	15445	Bolt, 1/2"-20 UNF x 1-5/8"	5
3	50031212	Reflector, Amber, 2" x 9"	2	28	15515BH	Nut, 1/2"-20 UNF	5
4	50031214	Reflector, Red	1	29	14-6-197	Bearing Cup	1
5	50073078	Hub & Spindle Assy, Rake Wheel	1	30	14-6-198	Bearing Cup	1
6	45187BH	Capscrew, 1/2" x 3-1/2" Gr 5	1	31	20063	Capscrew, 1" x 6-1/2" Gr 5	3
7	44539BH	Hex Nut, 1/2" Nylock	1	32	15908BH	Flatwasher, 1" Hard	4
8	50073497	Decal, Ground Pressure- LH	1	33	9163200	Locknut, 1" Gr C	3
9	50073077	Wheel & Tire Assembly, Rake	1	34	50073518-35	Short Arm Assy, LH w/Decals	1
10	50073092	Cam Assembly, LH	1	35	D628	Decal, Crushing Hazard	1
11	50017304	Pin, Lynch	1	36	50073511	Decal, Important Transport Latch	1
12	53065	Pin, Spiral 3/8" x 2-1/2"	1	37	44086BH	Pin, Spirol 3/8" x 3"	1
13	50073509	Decal, LH	1	38	50072951	Pin Assembly, Wing Angle	2
14	50072915	Pin Assembly, Pivot	1	39	50072895-35	Wing Arm Adjustment Assembly	1
15	1273BH	Pin, Presto 9 Ga x 3" D Plated	3	40	44429	Capscrew, 3/4" x 5-1/2" Gr 8	2
16	50072918	Pin Assembly, Pivot Arm Lock	1	41	45061BH	Flatwasher, 3/4" SAE	2
17	7977	Hub Assembly	1	42	44141	Hex Nut, 3/4"-10 UNC Gr 5	2
18	50073BH	Bearing, Cone Roller	1	43	50073502-35	Wing Set Plate Weldment	1
19	50076BH	Bearing, Cone Roller	1	44	50073503-35	Wing Frame Weldment - LH	1
20	7967	Seal, Triple Lip	1		50073503-35	Wing Frame Weldment - RH	
21	50072962	Spindle, Single - Rake	1	45	50073087	Cylinder, Hyd. 2.5" Bore x 12" Str.	1
22	15920	Flatwasher, 3/4"	1	46	44186BH	Capscrew, 1/4" x 1" Gr 5	4
23	120BH	Hex Nut, Slotted 3/4"-16 UNF	1	47	15918BH	Flatwasher, 1/4"	8
24	121BH	Cap, Hub	1	48	15608	Locknut, 1/4"	4
25	296	Pin, Cotter 1/8" x 1-1/2"	1	49	50074735	Cable Clamp	2

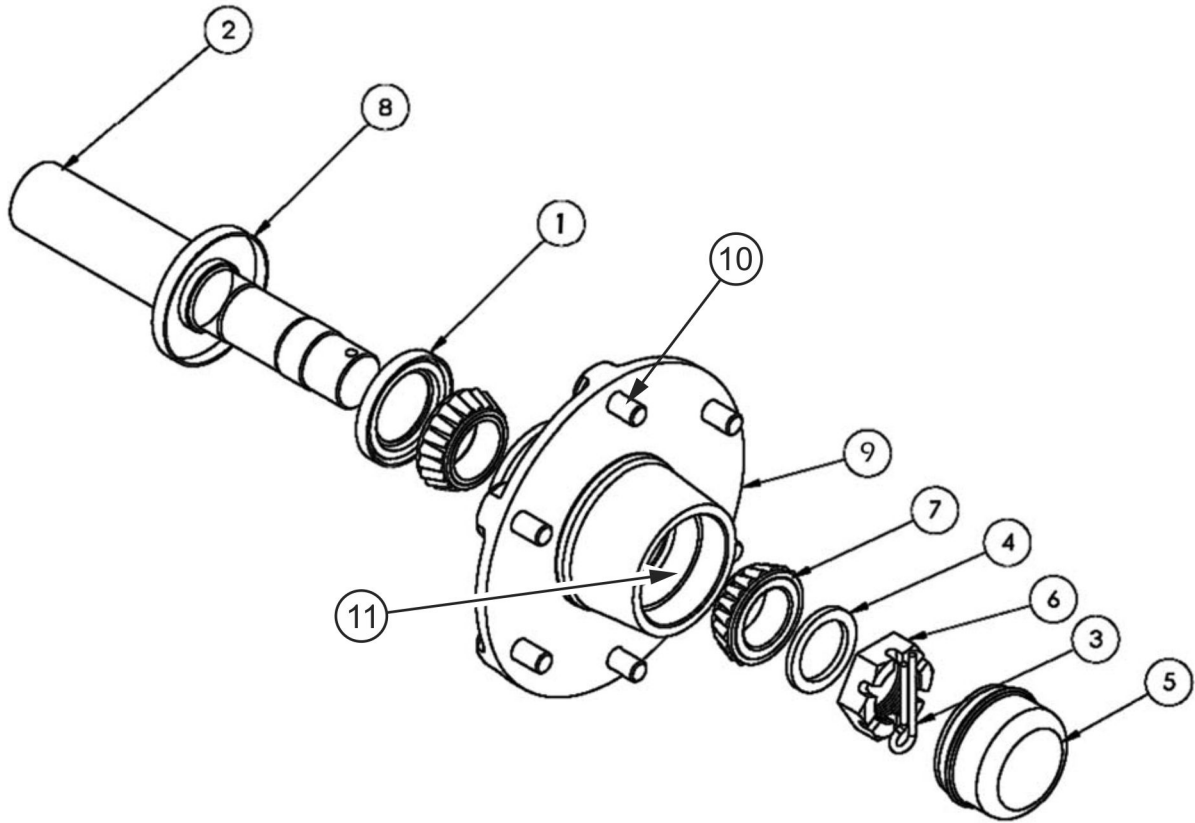
# **WHEELS & LH & RH RAKE ARM ASSEMBLY w/RELATED PARTS MODELS RHP8, RHP10 & RHP12**



**WHEELS & LH & RH RAKE ARM  
ASSEMBLY w/RELATED PARTS  
MODELS RHP8, RHP10 & RHP12**

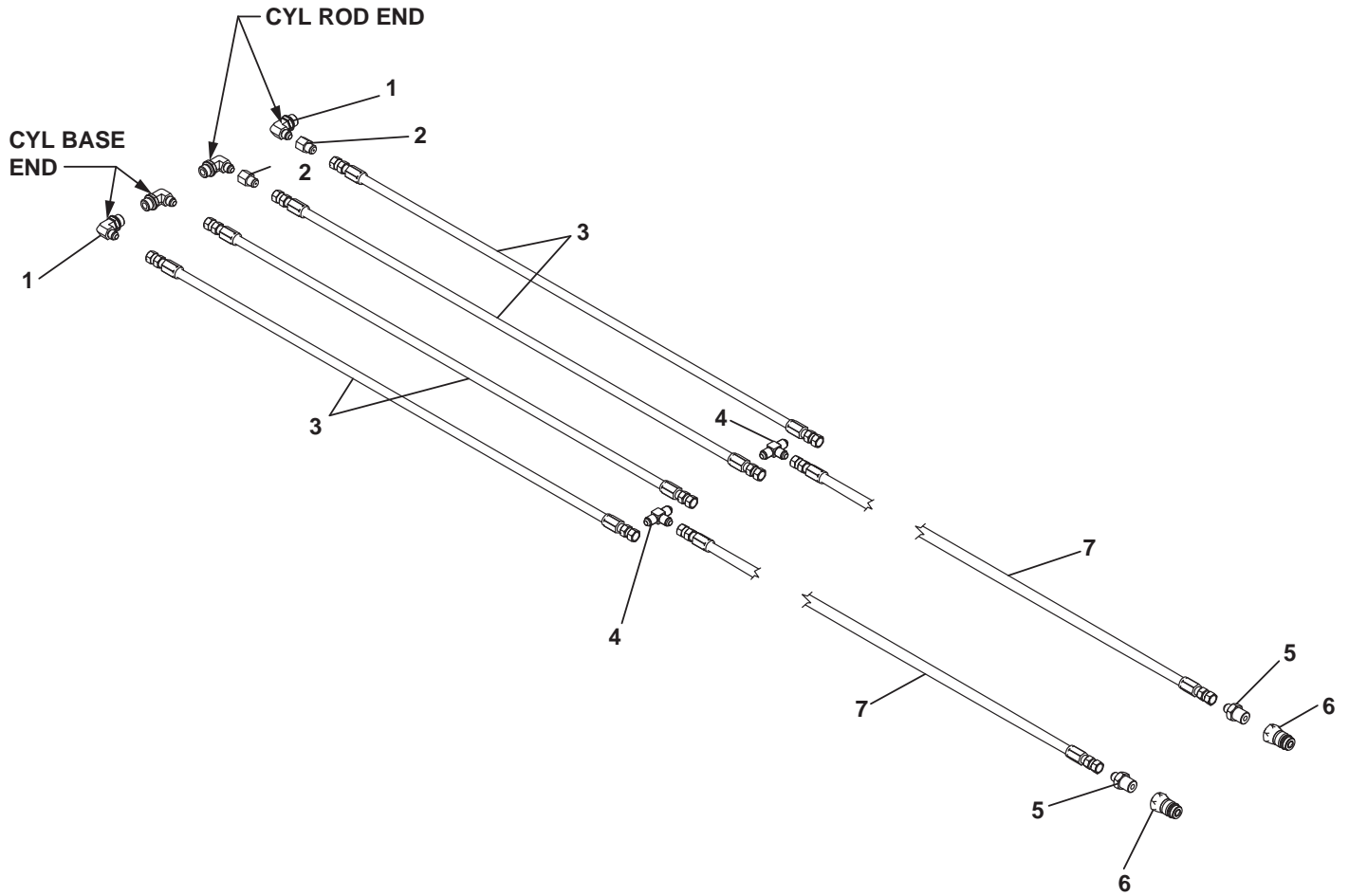
Item	Part No.	Description	Qty BSR8	Qty BSR10	Qty BSR12
1	50072842	Assembly, Rake Arm - RH	4	5	6
2	50073102	Assembly, Rake Arm - LH	4	5	6
3	-----	Rake Wheel Hub & Spindle Assembly	8	10	12
4	50073061	Bushing, Rake Arm	16	20	24
5	50073485	Spring, Rake Arm	8	10	12
6	50072964-35	Arm Stop Assembly, RH	4	4	5
7	50072978-35	Arm Stop Assembly, LH	4	4	5
8	50072973-35	Lock Pin Assembly, Front Stop - RH	-	1	1
9	50072976-35	Lock Pin Assembly, Front Stop - LH	-	1	1
10	53065	Pin, Spirol, 3/8" x 2-1/2"	8	10	12
11	50072905-35	Weldment, RH Wing Frame - RHP10	-	1	-
12	50072969-35	Weldment, LH Wing Frame - RHP10	-	1	-
13	50072970-35	Weldment, RH Wing Frame - RHP12	-	-	1
14	50072908-35	Weldment, LH Wing Frame - RHP12	-	-	1
15	50073515	Assembly, Rake Wheel - RH	4	5	6
16	50073104	Assembly, Rake Wheel - LH	4	5	6
17	50074099	Flange, Rake Wheel	8	10	12
18	50074098	Ring, Rake Wheel	8	10	12
19	50074097	Finger, Rake Wheel (Set of 40)	320	400	480
20	50074096	Plate, Clamp - Rake Wheel	80	100	120
21	-----	Bolt, M10 x 21	160	200	240
22	-----	Nut, M10	160	200	240
23	50072980	Assembly, Front Stop Lock Pin	-	2	2
24	1273BH	Pin, Presto 9 GA x 3" D Plated	-	2	2
25	50031212	Reflector, Amber 2" x 9"	-	2	2
26	1161010	Capscrew, 5/16" x 1" Gr 5	8	10	12
27	15915BH	Flatwasher, 3/8"	56	70	84
28	15907BH	Flatwasher, 5/16"	8	10	12
29	15528	Hex Nut, 5/16"	8	10	12
30	8151200	Hex Nut, 3/8"	48	60	72

## RAKE ARM HUB & SPINDLE ASSEMBLY 50073514



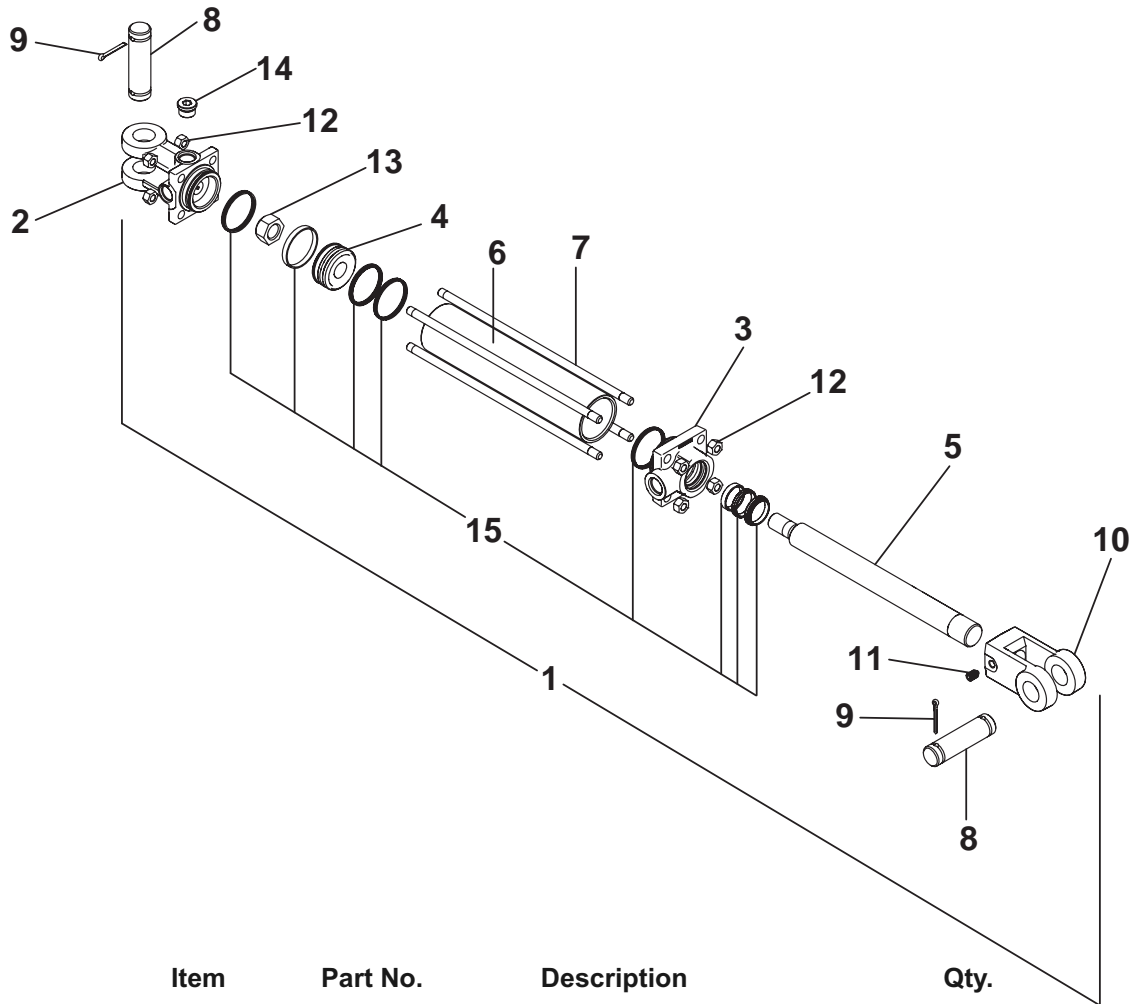
Item	Part No.	Description	Qty.
1	50074256	Seal, Hub (N906282)	1
2	50072962	Spindle, Single - Rake	1
3	21020416	Pin, Cotter 1/8" x 1-3/4"	1
4	50074101	Washer	1
5	50074102	Hub Cap	1
6	50074103	Nut, Slotted 3/4"-16 UNF	1
7	50074104	Bearing Cone (L44649)	2
8	50074100	Protector, Seal	1
9	50074257	Hub w/Studs & Cups	1
10	50074276	Stud - 3/8-16x1.25 GR5	6
11	170BH	Cup, Bearing	2

## HYDRAULIC KIT 50073523



Item	Part No.	Description	Qty.
1	14-40-98	Elbow, 90°	4
2	50068458	Restrictor	2
3	53330BH	Assembly, Hydraulic Hose, 42"	4
4	53339BH	Tee, G-Flare	2
5	24-6-434	Adapter, Hyd. Str. 1/2" Male NPT x 9/16" M JIC	2
6	25H43870	Coupler, Quick 1/2" Male-1/2" Female NPT	2
7	50015063	Assembly, Hydraulic Hose, 196"	2

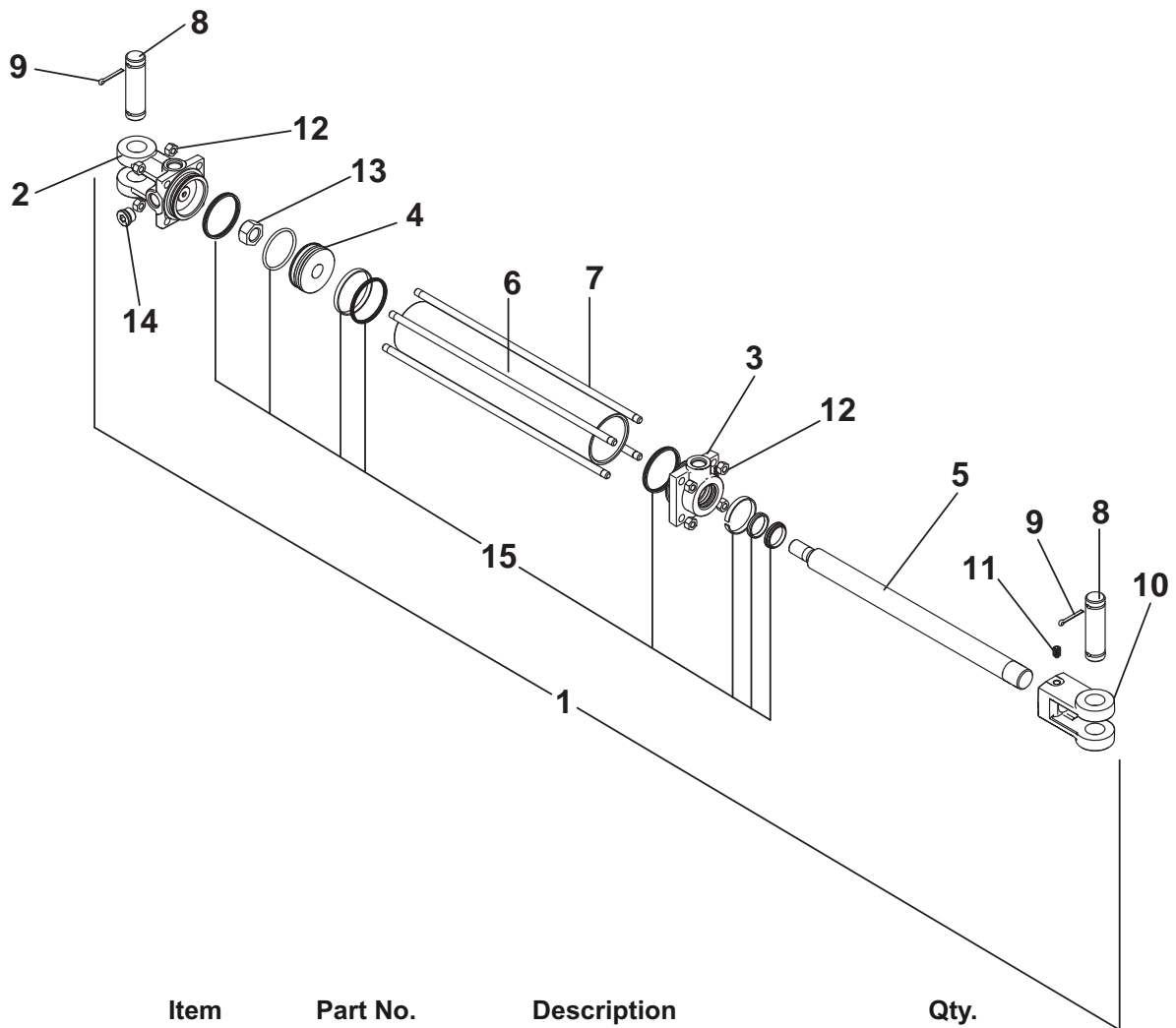
## HYDRAULIC CYLINDER - KICKER WHEEL



Item	Part No.	Description	Qty.
1	50074129	Assembly, Hydraulic Cylinder	1
2	-----	Clevis Cap	1
3	-----	Rod Cap	1
4	-----	Piston	1
5	-----	Rod, 1.125" Dia	1
6	-----	Cylinder Tube	1
7	-----	Tie Rod	4
8	-----	Pin, 1" Dia	2
9	-----	Cotter Pin, 3/16" x 1-1/2"	4
10	-----	Rod Clevis	1
11	-----	Set Screw	1
12	-----	Hex Nut	8
13	-----	Hex Nut	1
14	-----	Plug, 3/4"	1
15	50074138	Seal Kit	1



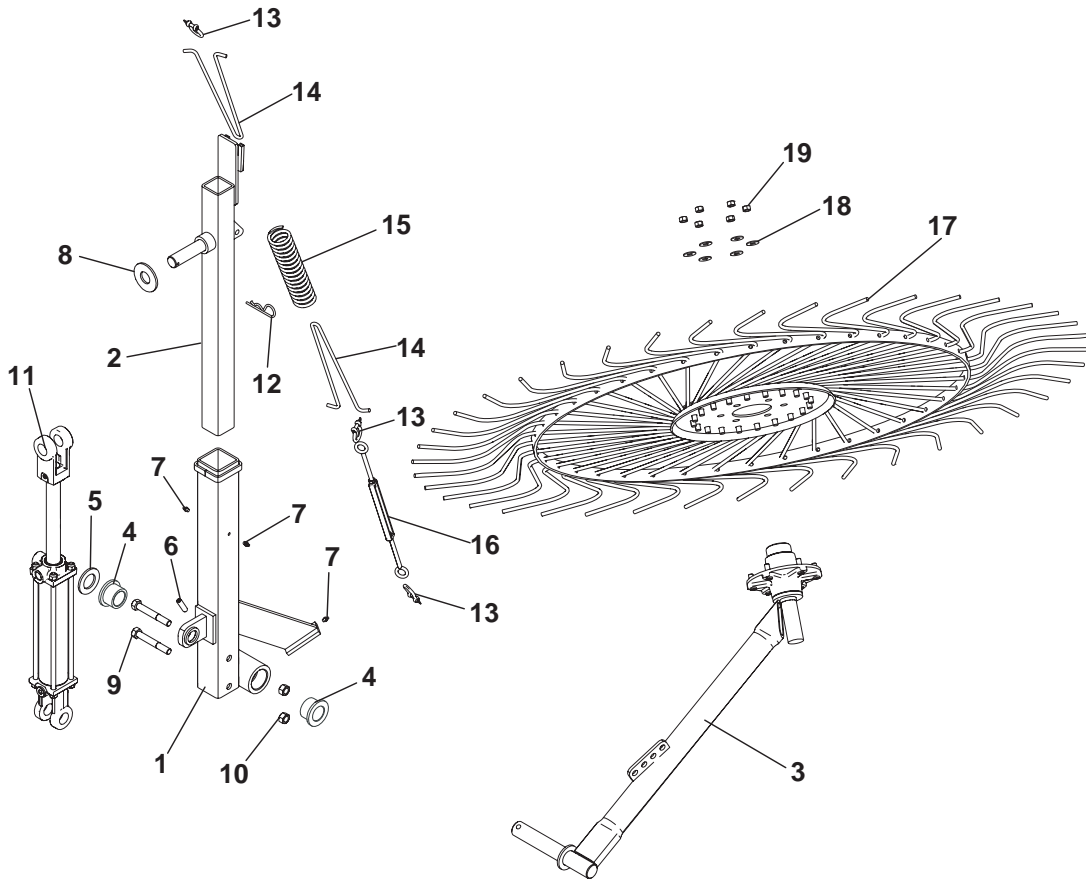
## HYDRAULIC CYLINDER - WING LIFT



Item	Part No.	Description	Qty.
1	50073087	Assembly, Hydraulic Cylinder	1
2	-----	Clevis Cap	1
3	-----	Rod Cap	1
4	-----	Piston	1
5	-----	Rod, 1.125" Dia	1
6	-----	Cylinder Tube	1
7	-----	Tie Rod	4
8	-----	Pin, 1" Dia	2
9	-----	Cotter Pin, 3/16" x 1-1/2"	4
10	-----	Rod Clevis	1
11	-----	Set Screw	1
12	-----	Hex Nut	8
13	-----	Hex Nut	1
14	-----	Plug, 3/4"	1
15	50073528	Seal Kit	1

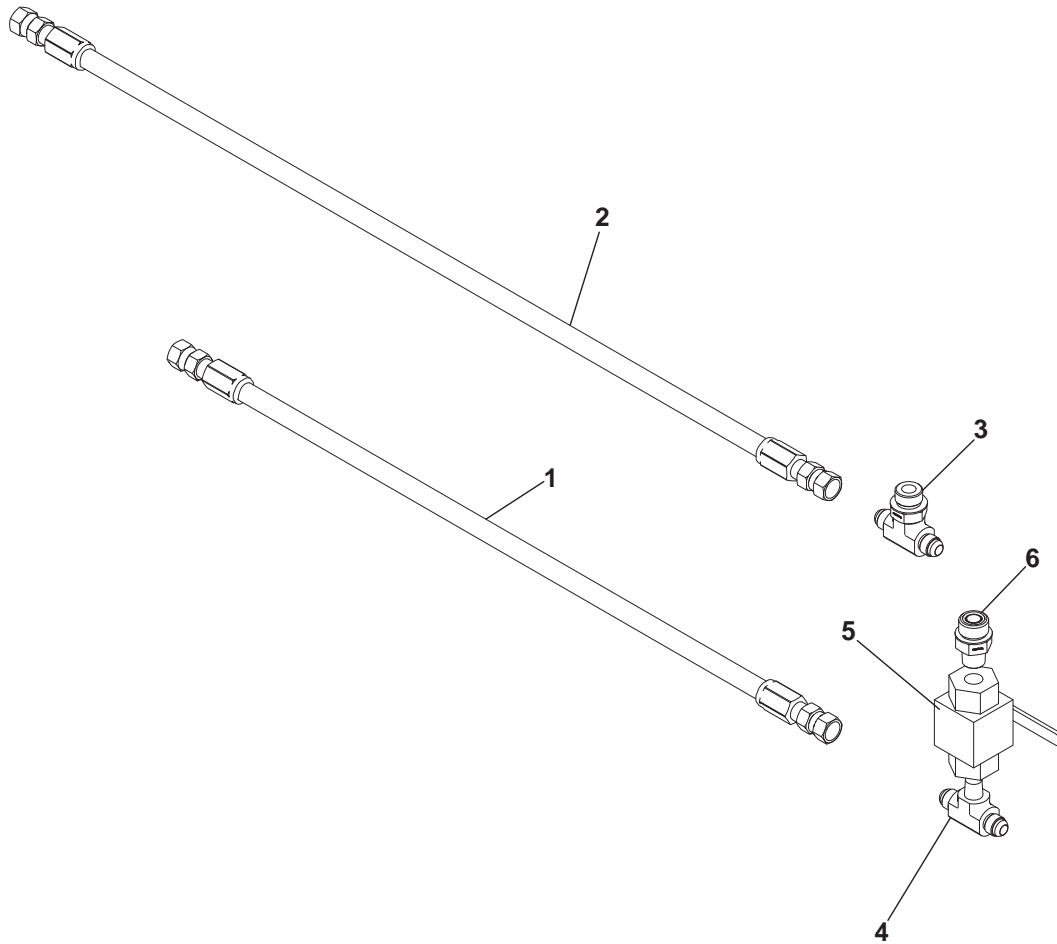
## KICKER WHEEL KIT (OPTIONAL)

### 50074095



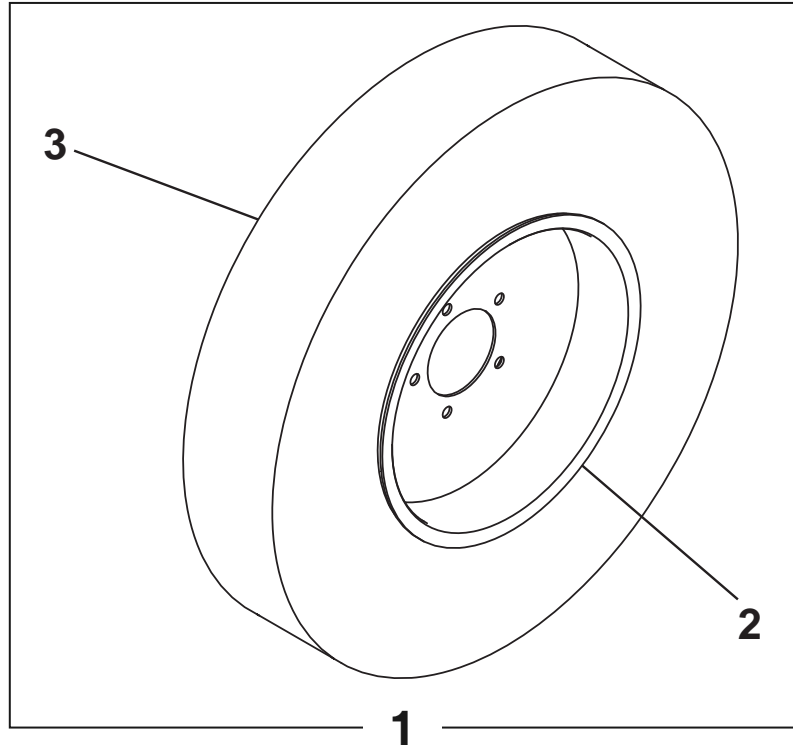
Item	Part No.	Description	Qty.
1	50074105	Weldment, Kicker Main	1
2	50074113	Bracket, Kicker Slide	1
3	50074118	Carrier, Rake Wheel	1
4	50073061	Bushing, Rake Arm	2
5	20570	Flatwasher, 1-1/4" SAE	1
6	19529	Pin, Spirol 3/8" x 1-1/2"	1
7	449BH	Fitting, Grease 1/4-28 UNF Str.	3
8	15908BH	Flatwasher, 1" Hard	1
9	45196BH	Capscrew, 1/2" x 4" Gr 5	2
10	45104	Locknut, 1/2" Gr C	2
11	50074129	Cylinder, Tie Rod, 2" Bore x 8" Stroke x 1.125" Rod	1
12	1273BH	Pin, Presto 9 Ga x 3" D	1
13	50074125	Shackle, Anchor	3
14	50074127	Stay, Spring	2
15	50074128	Spring, Kicker	1
16	50074126	Turn Buckle (5/16" x 18"), 9" Closed x 4.5" Adjust.	1
17	50073515	Assembly, Rake Wheel - RH	1
18	45063	Flatwasher, 3/8"	6
19	45073	Hex Nut, 3/8"	6

## HYDRAULIC KIT, KICKER WHEEL (OPTIONAL) 50074130



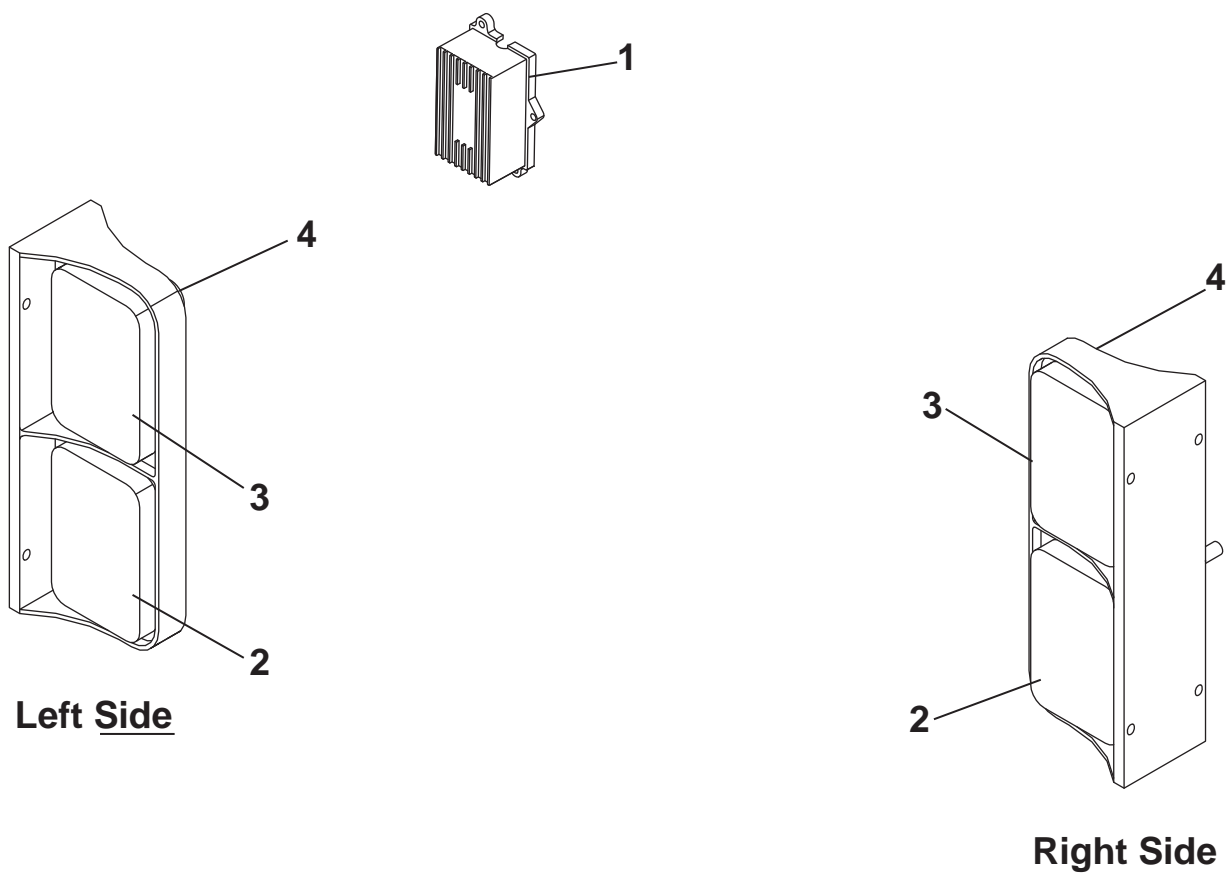
Item	Part No.	Description	Qty.
1	25H46118	Hose Assembly, Hydraulic - 25" Lg	1
2	25H41146	Hose Assembly, Hydraulic - 31" Lg	1
3	50074133	Tee, Male Branch, 9/16"-18 MJIC x 9/16"-18 MJIC x 3/4"-16 MORB	1
4	50074134	Tee, Male Branch, 9/16"-18 MJIC x 9/16"-18 MJIC x 3/8" NPT	1
5	50074132	Valve, Hydraulic Ball	1
6	50074135	Adaptor, 3/4"-16 MORB x 3/8" NPT	1

## RAKE WHEEL & TIRE ASSEMBLY



Item	Part No.	Description	Qty.
1	50073077	Assembly, Rake Wheel & Tire	1
2	50073075	Rim, 15 x 5.0 BW Rolled 5-0.53"	1
3	50073076	Tire, ST205/75 D15 K550 6P TL	1

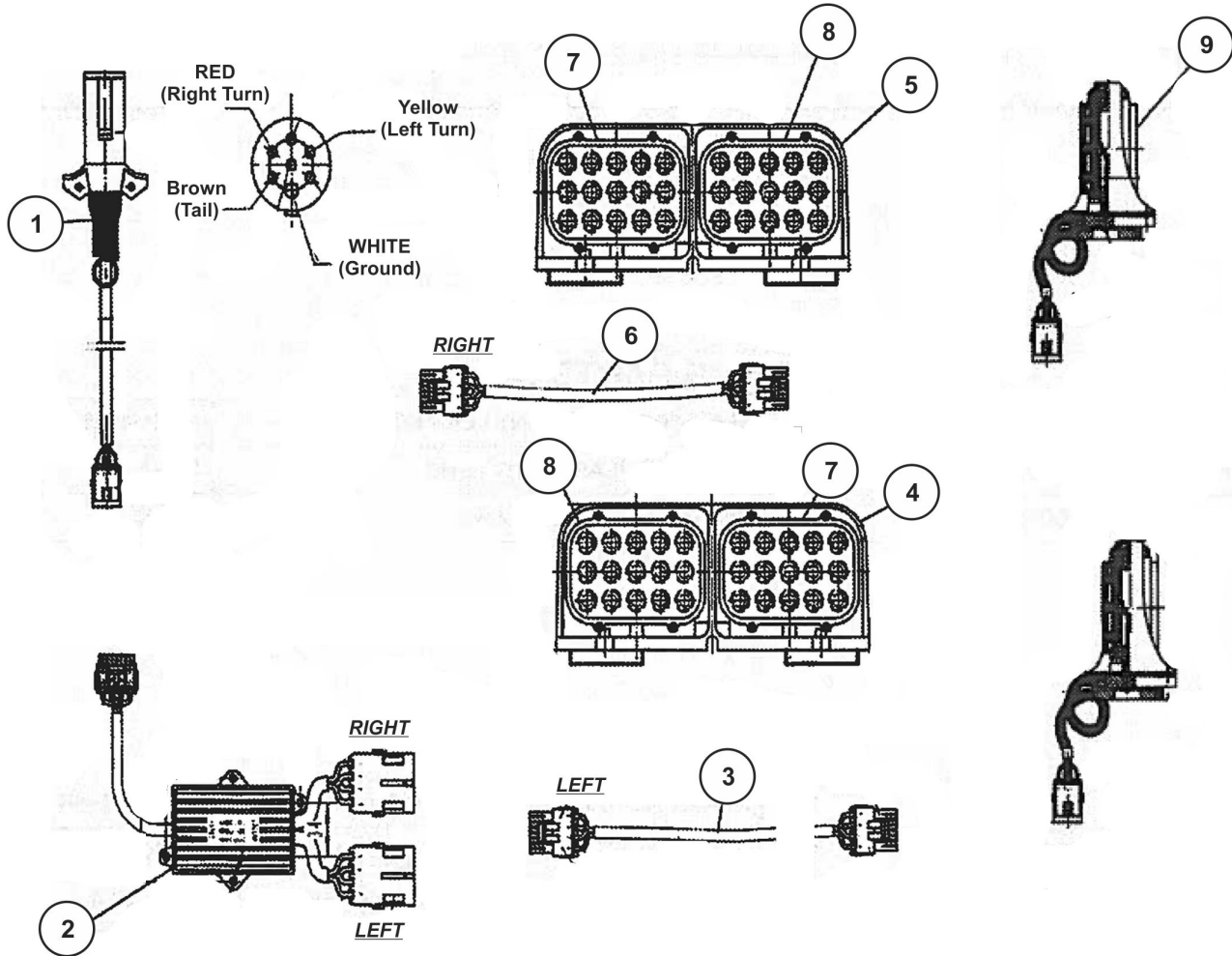
# LED LIGHT KIT (REAR LIGHTS ONLY) 50074720



Item	Part No.	Description	Qty.
1	50072057	Module, Enhance	1
2	50072062	Lens, Red Replacement	2
3	50072063	Lens, Amber Replacement	2
4	50072064	Cover, Black Replacement Lens	4

## LED LIGHT LIGHT KIT (BREAKDOWN)

### 50074720



Item	Part No.	Description	Qty.
1	50074721	Main Harness (7Pin 16' LG)	1
2	50072057	Enhance Module	1
3	50074722	Wishbone Harness, LH (8' LG)	1
4	50074723	Dual LED AG Lamp, LH, Amber/Red	1
5	50074724	Dual LED AG Lamp, RH, Red/Amber	1
6	50074725	Wishbone Harness, RH (8' LG)	1
7	50072062	Red Replacement Lens	1
8	50072063	Amber Replacement Lens	1
9	50072064	Black Replacement Lens Cover	1

# SERVIS-RHINO

## LIMITED WARRANTY

### 1. LIMITED WARRANTIES

- 1.01.Servis-Rhino warrants for one year from the purchase date to the original non-commercial, governmental, or municipal purchaser ("Purchaser") and warrants for six months to the original commercial or industrial purchaser ("Purchaser") that the goods purchased are free from defects in material or workmanship.
- 1.02.Manufacturer will replace for the Purchaser any part or parts found, upon examination at one of its factories, to be defective under normal use and service due to defects in material or workmanship.
- 1.03.This limited warranty does not apply to any part of the goods which has been subjected to improper or abnormal use, negligence, alteration, modification, or accident, damaged due to lack of maintenance or use of wrong fuel, oil, or lubricants, or which has served its normal life. This limited warranty does not apply to any part of any internal combustion engine, or expendable items such as blades, shields, guards, or pneumatic tires except as specifically found in your Operator's Manual.
- 1.04.Except as provided herein, no employee, agent, Dealer, or other person is authorized to give any warranties of any nature on behalf of Manufacturer.

### 2. REMEDIES AND PROCEDURES.

- 2.01.This limited warranty is not effective unless the Purchaser returns the Registration and Warranty Form to Manufacturer within 30 days of purchase.
- 2.02.Purchaser claims must be made in writing to the Authorized Dealer ("Dealer") from whom Purchaser purchased the goods or an approved Authorized Dealer ("Dealer") within 30 days after Purchaser learns of the facts on which the claim is based.
- 2.03.Purchaser is responsible for returning the goods in question to the Dealer.
- 2.04.If after examining the goods and/or parts in question, Manufacturer finds them to be defective under normal use and service due to defects in material or workmanship, Manufacturer will:
  - (a) Repair or replace the defective goods or part(s) or
  - (b) Reimburse Purchaser for the cost of the part(s) and reasonable labor charges (as determined by Manufacturer) if Purchaser paid for the repair and/or replacement prior to the final determination of applicability of the warranty by Manufacturer.The choice of remedy shall belong to Manufacturer.
- 2.05.Purchaser is responsible for any labor charges exceeding a reasonable amount as determined by Manufacturer and for returning the goods to the Dealer, whether or not the claim is approved. Purchaser is responsible for the transportation cost for the goods or part(s) from the Dealer to the designated factory.

### 3. LIMITATION OF LIABILITY.

- 3.01.MANUFACTURER DISCLAIMS ANY EXPRESS (EXCEPT AS SET FORTH HEREIN) AND IMPLIED WARRANTIES WITH RESPECT TO THE GOODS INCLUDING, BUT NOT LIMITED TO, MERCHANTABILITY AND FITNESS FOR A PARTICULAR PURPOSE.
- 3.02.MANUFACTURER MAKES NO WARRANTY AS TO THE DESIGN, CAPABILITY, CAPACITY, OR SUITABILITY FOR USE OF THE GOODS.
- 3.03.EXCEPT AS PROVIDED HEREIN, MANUFACTURER SHALL HAVE NO LIABILITY OR RESPONSIBILITY TO PURCHASER OR ANY OTHER PERSON OR ENTITY WITH RESPECT TO ANY LIABILITY, LOSS, OR DAMAGE CAUSED OR ALLEGED TO BE CAUSED DIRECTLY OR INDIRECTLY BY THE GOODS INCLUDING, BUT NOT LIMITED TO, ANY INDIRECT, SPECIAL, CONSEQUENTIAL, OR INCIDENTAL DAMAGES RESULTING FROM THE USE OR OPERATION OF THE GOODS OR ANY BREACH OF THIS WARRANTY. NOTWITHSTANDING THE ABOVE LIMITATIONS AND WARRANTIES, MANUFACTURER'S LIABILITY HEREUNDER FOR DAMAGES INCURRED BY PURCHASER OR OTHERS SHALL NOT EXCEED THE PRICE OF THE GOODS.
- 3.04.NO ACTION ARISING OUT OF ANY CLAIMED BREACH OF THIS WARRANTY OR TRANSACTIONS UNDER THIS WARRANTY MAY BE BROUGHT MORE THAN TWO (2) YEARS AFTER THE CAUSE OF ACTION HAS OCCURRED.

### 4. MISCELLANEOUS.

- 4.01.Proper Venue for any lawsuits arising from or related to this limited warranty shall be only in Guadalupe County, Texas.
- 4.02.Manufacturer may waive compliance with any of the terms of this limited warranty, but no waiver of any terms shall be deemed to be a waiver of any other term.
- 4.03.If any provision of this limited warranty shall violate any applicable law and is held to be unenforceable, then the invalidity of such provision shall not invalidate any other provisions herein.
- 4.04.Applicable law may provide rights and benefits to purchaser in addition to those provided herein.

### KEEP FOR YOUR RECORDS

ATTENTION: Purchaser should fill in the blanks below for his reference when buying repair parts and/or for proper machine identification when applying for warranty.

Servis-Rhino Implement Model \_\_\_\_\_ Serial Number \_\_\_\_\_

Date Purchased \_\_\_\_\_ Dealer \_\_\_\_\_

ATTENTION:  
READ YOUR OPERATOR'S MANUAL

**RHINO®**  
1020 S. Sangamon Ave.  
Gibson City, IL 60936  
800-446-5158  
Email: [parts@servis-rhino.com](mailto:parts@servis-rhino.com)





## TO THE OWNER/OPERATOR/DEALER

To keep your implement running efficiently and safely, read your manual thoroughly and follow these directions and the Safety Messages in this Manual. The Table of Contents clearly identifies each section where you can easily find the information you need.

The OCCUPATIONAL SAFETY AND HEALTH ACT (1928.51 Subpart C) makes these minimum safety requirements of tractor operators:

### REQUIRED OF THE OWNER:

1. Provide a Roll-Over-Protective Structure that meets the requirements of this Standard; and
2. Provide Seatbelts that meet the requirements of this paragraph of this Standard and SAE J4C; and
3. Ensure that each employee uses such Seatbelt while the tractor is moving; and
4. Ensure that each employee tightens the Seatbelt sufficiently to confine the employee to the protected area provided by the ROPS.

### REQUIRED OF THE OPERATOR

1. Securely fasten seatbelt if the tractor has a ROPS.
2. Where possible, avoid operating the tractor near ditches, embankments, and holes.
3. Reduce speed when turning, crossing slopes, and on rough, slick, or muddy surfaces.
4. Stay off slopes too steep for safe operation.
5. Watch where you are going - especially at row ends, on roads, and around trees.
6. Do not permit others to ride.
7. Operate the tractor smoothly - no jerky turns, starts, or stops.
8. Hitch only to the drawbar and hitch points recommended by the tractor manufacturer.
9. When the tractor is stopped, set brakes securely and use park lock, if available.



**Keep children away from danger all day, every day...**



**Equip tractors with rollover protection (ROPS) and keep all machinery guards in place...**



**Please work, drive, play and live each day with care and concern for your safety and that of your family and fellow citizens.**



