

**BUNDLE 2-5627**  
**84Q LOADER SINGLE LEVER CONTROL VALVE & PLUMBING**  
**TO TRACTOR HYDRAULICS FOR**  
**MASSEY FERGUSON 1020 HST 2WD & 4WD TRACTORS**

The single handle control valve and plumbing kit can be installed on the tractor using tools ordinarily available. Shut off the tractor engine and engage tractor brakes during installation.

***NOTE:** Apply sealant only to all tapered threads unless coupled with swivel adapters. When using teflon tape, wrap tape clockwise (as viewed from end) and wrap tape only twice. Keep sealant away from first two threads of tapered end to prevent contamination of hydraulic fluid. Do not use sealant on o-ring or flare adapter threads.*

**ASSEMBLING SINGLE LEVER VALVE CONTROL ONTO VALVE (Figure 1)**

1. Fasten handle attachment angle (2) to valve (1) using the 5/16 x 3/4 flat head cap screw (3) and socket head cap screw (4).
2. Fasten Ball joint stud (8) to handle attachment angle (2) with 1/4-28 lock nut (13), then slide female ball joint (7) onto stud (8). Fasten both male ball joints (6) onto both spools of valve (1) with 1/4-28 hex nuts (12) and lock washers (11). Quarter-inch flat washers (10) may be used between valve lift spool (spool with float) and ball joint (6) to change angle of valve handle lever (5).

***NOTE:** Rotate tilt spool (spool without float) approximately 45° to ease installation of male ball joint (6), lock washer (11) and nut (12).*

3. Fasten valve handle lever (5) to ball joints (6 & 7) using 1/4-28 x 3/4 socket head cap screws (9). Slide rubber boot (15) over handle (5) and secure with cap nut (16). Screw ball knob (17) onto valve handle (5). Slide plastic tip protector (18) onto guard rod of valve mounting plate (14).

**ASSEMBLING HOSES AND FITTINGS TO VALVE (Figure 1)**

1. Remove metal plug from power beyond port (marked "PB") of valve (1). Dip power beyond sleeve (19) into hydraulic fluid to lubricate seals and install into power beyond port.
2. Remove plastic plugs from all remaining ports of valve (1). Install 9/16-9/16 x 90° male elbow fittings (20) into ports **C** and **D**, and in power beyond port of control valve (1). Install 9/16-9/16 straight fittings (21) into ports **A** and **B**, and in inlet and outlet ports of valve (1). Install 9/16-9/16 x 90° female elbow fittings (22) onto straight fittings (21) in ports **A** and **B** of valve.

***NOTE:** Make sure one-way restrictor plate with .109 hole is positioned in working port **D** with grooved side facing out to prevent the loader from lowering too fast.*

3. Connect 3/8 x 24 hoses (23) onto fittings (20 & 21) in inlet, outlet and power beyond ports of control valve (1). Connect 3/8 x 36 hoses (24) into fittings (20 & 22) in the four working ports (**A**, **B**, **C** & **D**) of valve (1).

**INSTALLING VALVE AND VALVE MOUNTING BRACKET (Figure 1)**

1. Remove sheet-metal panel located below and to the right of tractor seat, saving attaching hardware. Replace sheet metal panel with replacement panel (25) and fasten in place using 5/16 x 1 cap screws (26), flat washers (27) and existing hardware.

## INSTALLING VALVE AND VALVE MOUNTING BRACKET (Continued)

2. Routing hoses (23 & 24) through opening in replacement panel (25) and over tractor rear axle housing, fasten valve (1) and valve mounting bracket (14) to tractor right fender using 1/4 x 2-1/2 cap screws (28), reinforcement plate (30), lock washers (11) and nuts (29).

**NOTE:** *It is necessary to drill two 1/4" holes in tractor fender, see figure 1C for location.*

## PLUMBING VALVE TO TRACTOR HYDRAULICS AND QUICK COUPLERS (Figure 2)



**WARNING:** *Escaping hydraulic fluid under pressure can have sufficient force to penetrate the skin, causing serious personal injury. If injured by escaping fluid, obtain medical treatment immediately.*

1. Install one 9/16-9/16 x 90° male elbow fitting (20) into bottom port of hydraulic adapter block (31), and into upper port in rear slanted face. Install 9/16-9/16 straight fitting (21) into lower port in rear slanted face of adapter block (31) and install 9/16-9/16 x 90° female elbow fitting (22) onto straight fitting. Orient fittings as shown.
2. Remove the three M8 metric cap screws which fasten the cover to tractor hydraulic outlet. Press o-rings (32) into counterbores around holes in tractor hydraulic outlet. Making sure o-rings (32) do not fall out, sandwich adapter block (31) between hydraulic outlet and cover, and fasten in place using M8 x 70 metric cap screws (33) and existing lock washers.



**CAUTION:** *When routing hoses over tractor axle, make sure hoses are positioned to stay clear of tractor PTO.*

3. Connect 3/8 x 24 hose (23) from power beyond port of valve (1) to 9/16-9/16 x 90° elbow fitting (22) in lower port in rear slanted face of hydraulic adapter block (31). Connect hose (23) from inlet port of valve (1) to fitting (20) in upper port in rear slanted face of block (31). Connect remaining 24" hose (23) from outlet port of control valve to fitting (22) in bottom port.
4. Remove M12 metric cap screw from position shown at center of rear of tractor. Place quick coupler bracket (34) to tractor and fasten in place using M12 x 45 metric cap screw (35) and lock washer (36).
5. Connect 3/8 x 36 hose (24) from port **A** of control valve (1) to female quick coupler (37) through lower left hole of quick coupler bracket (34), capturing quick coupler bracket (34) and plastic spacer (40) between quick coupler (37) and hose (24). Install green spiral band (41) to hose (24) near quick coupler for identification. Do likewise for hose (24) from port **C** at lower right hole (red band); hose from port **B** at upper left hole (blue band); and hose from port **D** at upper right hole (yellow band).
6. Make sure surface of tractor right rear fender is clean and dry. It must be free of wax, grease or other contaminants for decal (39) to adhere properly. Peel paper backing off single lever valve operation decal (39) and apply it to the tractor right rear fender where it can be easily seen by the operator.

## PLUMBING LOADER TO CONTROL VALVE QUICK COUPLERS (Figure 2)

1. Install 3/8 x 150 hoses (42) onto loader boom oil line tubes, temporarily loosening the screw to the nearest oil line clamp will ease hose installation. Install 5/8 spiral bands onto free ends of hoses for identification. Slide nylon sleeve (43) over hoses (42) and install male quick couplers (38) onto ends of hoses.
2. Route hoses (42) and sleeve (43) back underneath tractor footrest platform and over tractor rear axle housing. Connect male quick couplers (38) to female quick couplers (37) with matching spiral bands.
3. Pull hoses (42) and sleeve (43) forward at front of loader to take up slack, then wrap one end of rubber strap (45) around hoses (42) and hook it onto itself. Hook other end of rubber strap into hole provided near front of right side frame channel. Use two tie straps (44) to secure hoses (42) and sleeve (43) to right reinforcement bracket at front and rear. Wrap remaining tie straps around hoses where necessary.
4. After all plumbing has been completed and all parts are secure, start the tractor engine and slowly cycle the loader lift and bucket cylinders several times to purge any air out of the system, then retract the cylinders and shut off the tractor engine. Add additional tractor hydraulic fluid as specified in the tractor operators manual to bring the level of hydraulic fluid up to full.

**NOTE:** When cycling the loader, operate the loader according to the operation decal (39) on tractor fender. If direction of control lever is wrong, or loader will not lower, recheck connections shown.



**WARNING:** Do not use your hand to check for leaks, use a piece of paper or cardboard instead. Escaping hydraulic fluid can have sufficient force to penetrate the skin, causing serious personal injury. If you are injured by escaping hydraulic fluid, obtain medical treatment immediately.

### PARTS LIST

Item	Part No.	Description	Qty.
1	38413	VALVE, DFP Model 1627 GD 1600 PSI	1
2	38903	ANGLE, Handle Attachment	1
3	38911-1	SCREW, Flat Head Socket, 5/16-24 x 3/4	1
4	38910-2	SCREW, Socket Head Cap, 5/16-24 x 3/4	1
5	38921	LEVER, Valve Handle	1
6	26009-3	BALL JOINT, Male	2
7	38900-5	BALL JOINT, Female	1
8	38904-1	STUD, Ball Joint	1
9	38910-1	SCREW, Socket Head, 1/4-28 x 3/4	3
10	G120392	WASHER, Flat, 1/4	4
11	G120380	WASHER, Lock, 1/4	4
12	G120367	NUT, Hex, 1/4-28	2
13	G9416430	NUT, Lock, 1/4-28	1
14	38919	BRACKET, Valve Mounting	1
15	38653	BOOT, Handle	1
16	38930-1	CAP NUT, 1/4	1
17	38902	BALL, Handle Knob	1
18	38204	TIP, Plastic Protector	1

Continued

**PARTS LIST (Continued)**

Item	Part No.	Description	Qty.
19	36584	FITTING, Power Beyond	1
20	32845-1	FITTING, Elbow, 9/16 SAE - 9/16 JIC x 90°	5
21	32844-1	FITTING, Straight, 9/16 SAE - 9/16 JIC	5
22	34128-3	FITTING, Elbow, 9/16 JIC - 9/16 JIC x 90°	3
23	36386-8	HOSE, 3/8 x 24"	3
24	38163-1	HOSE, 3/8 x 36"	4
25	38120	PANEL, Replacement	1
26	G180079	SCREW, Cap, 5/16-18 x 1	3
27	G120393	WASHER, Flat, 5/16 SAE	3
28	G180048	SCREW, Cap, 1/4-20 x 2-1/2	2
29	G120375	NUT, Hex, 1/4-20	2
30	38143	PLATE, Fender Reinforcement	1
31	36933	BLOCK, Hydraulic Adapter	1
32	6000-20	O-RING	6
33	6090-50	SCREW, Metric Cap, M8-1.25 x 70	3
34	38121	BRACKET, Coupler	1
35	6090-81	SCREW, Metric Cap, M12-1.5 x 45	1
36	G120384	WASHER, Lock, 1/2	1
37	6147-4	COUPLER, Female Quick	4
38	6137-4	COUPLER, Male Quick	4
39	38447	DECAL, Single Lever Valve Control	1
40	38912	SPACER, Plastic	4
41	36240-5	BAND, Spiral, 5/8, Blue	2
	36240-6	BAND, Spiral, 5/8, Red	2
	36240-7	BAND, Spiral, 5/8, Yellow	2
	36240-8	BAND, Spiral, 5/8, Green	2
42	36336-6	HOSE, 3/8 x 150"	4
43	34853-2	SLEEVE, Nylon Hose	1
44	7438-1	STRAP, Adjustable Tie	5
45	8137-1	STRAP, Rubber	1

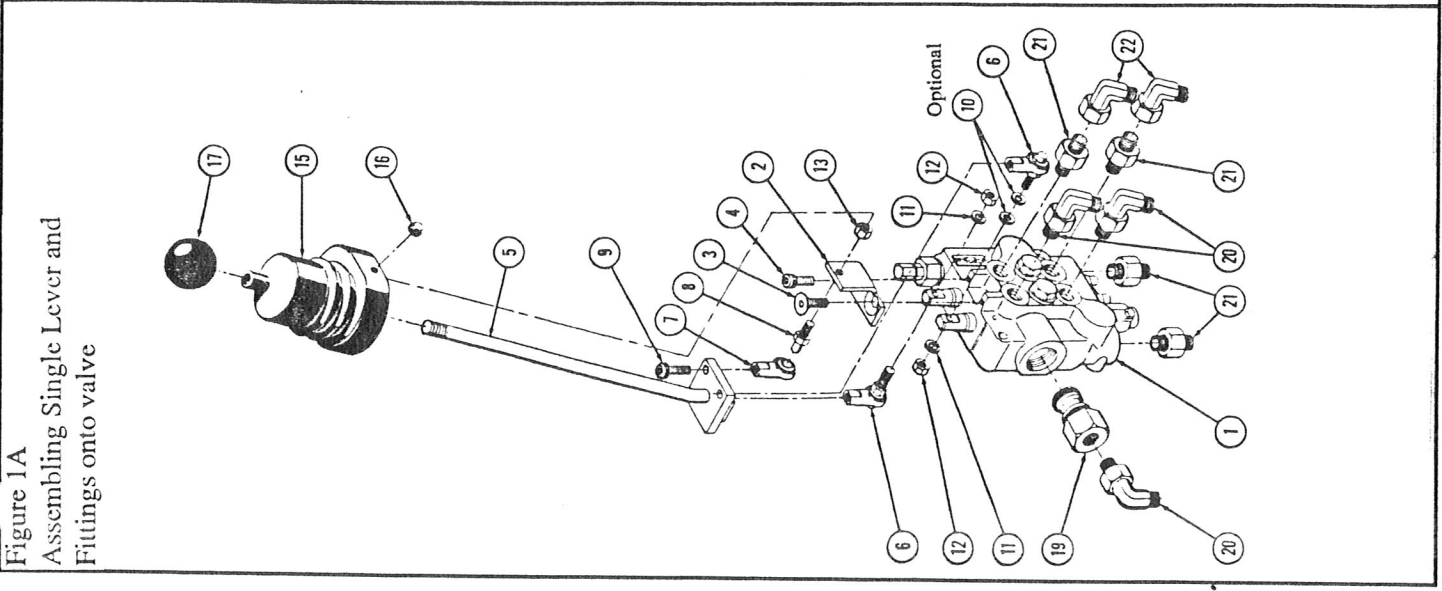
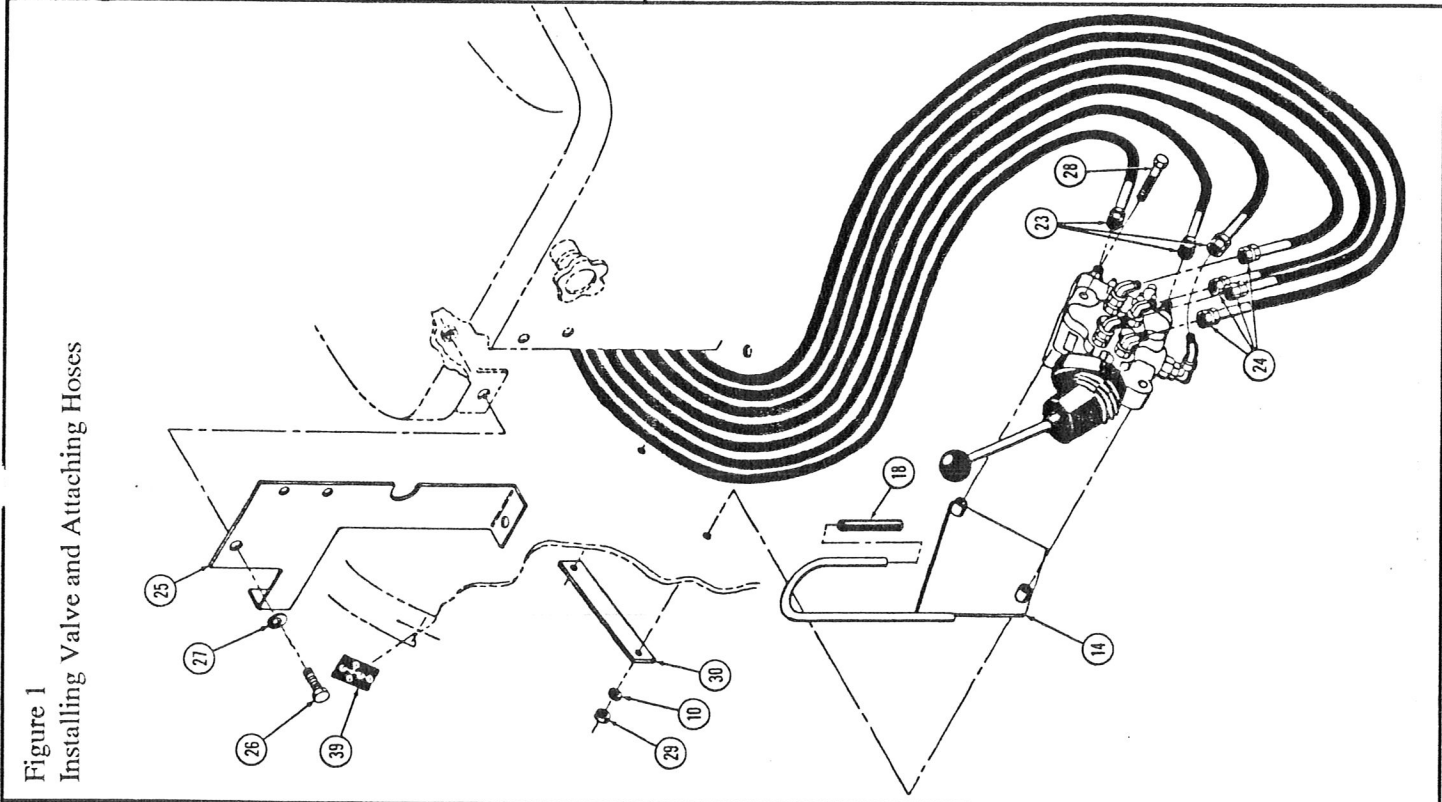
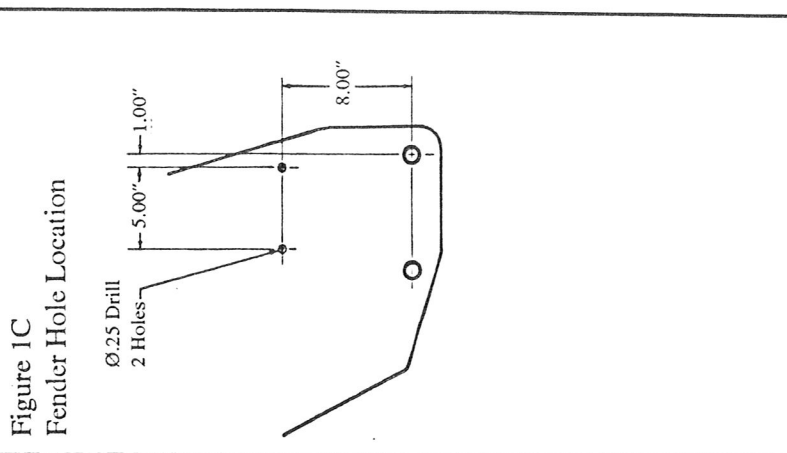
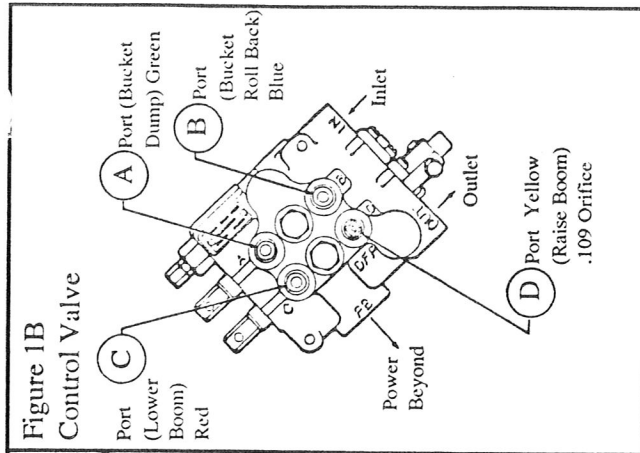


Figure 1B  
Control Valve

Figure 1C  
Fender Hole Location

Figure 1  
Installing Valve and Attaching Hoses

Figure 1A  
Assembling Single Lever and Fittings onto valve

Figure 2  
Plumbing Valve to Tractor Hydraulics, Quick Couplers and Loader

MASSEY 1020

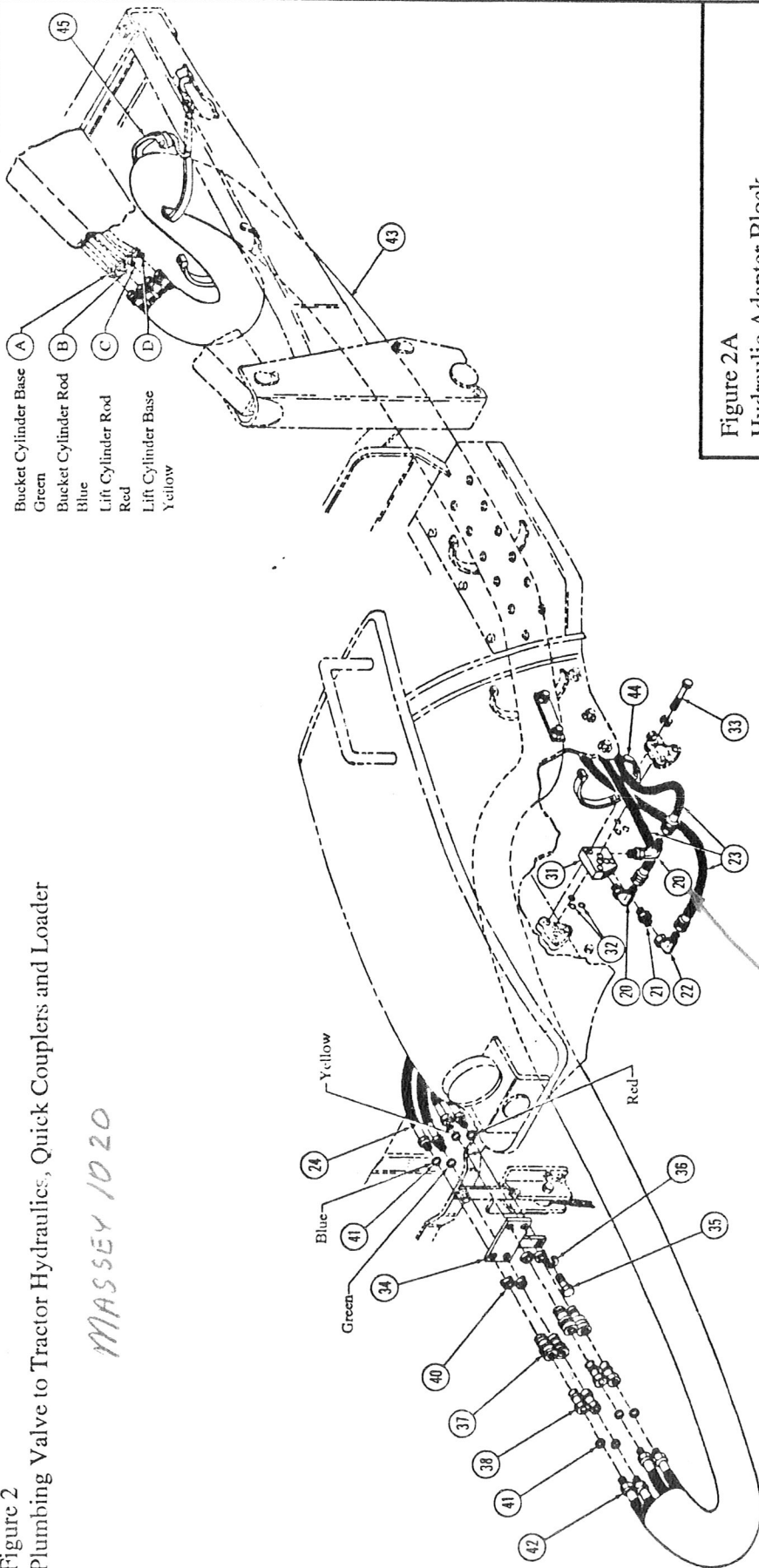
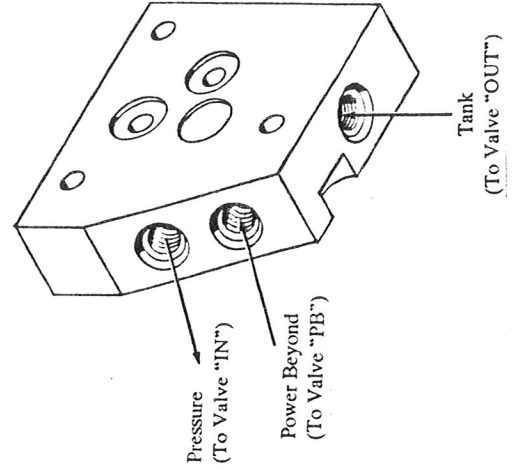


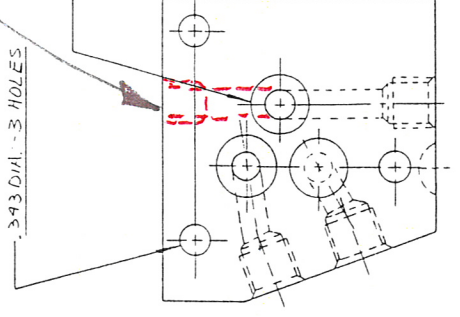
Figure 2A  
Hydraulic Adapter Block



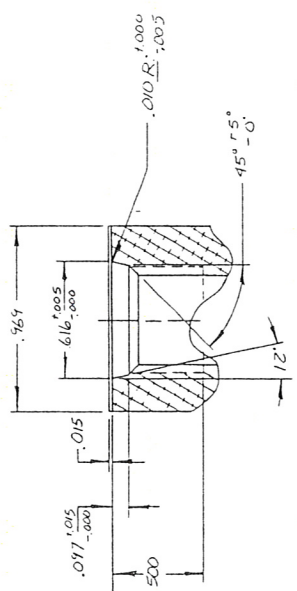
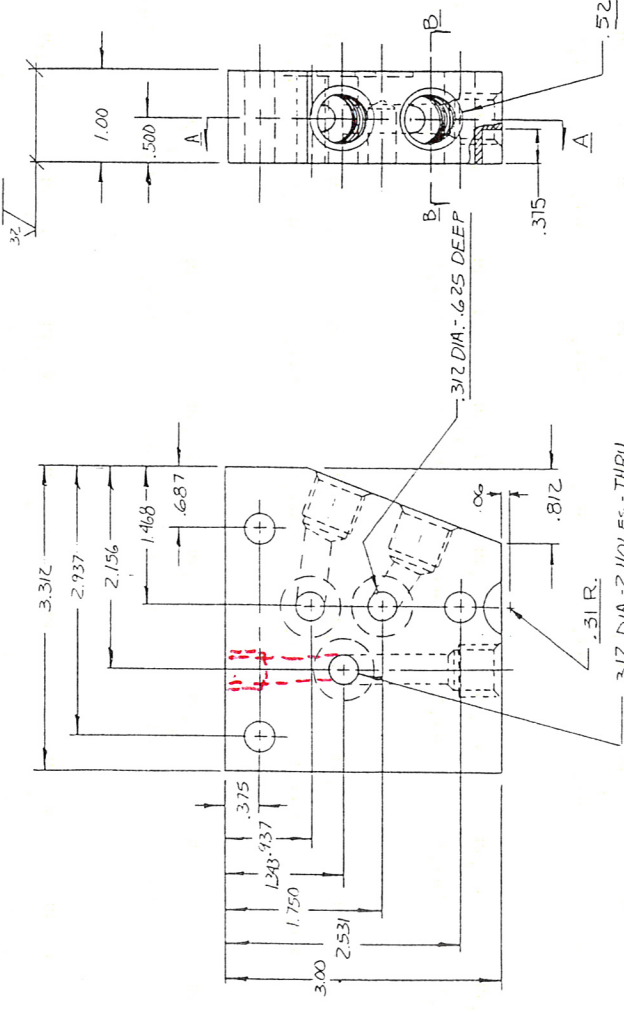
9/20/00  
FITTING 20 (TANK PORT) INTERFERES WITH  
BRAKE RODS - NOTHING CAN COME OUT BOTTOM OR  
FRONT OF ADAPTER BLOCK. DEALER (PH 618-498-2197)  
DRILLED ANY TAPPED HOLE DOWN FROM THE TOP  
OF ADAPTER BLOCK

DRILL 3 TAP  
ANOTHER PORT

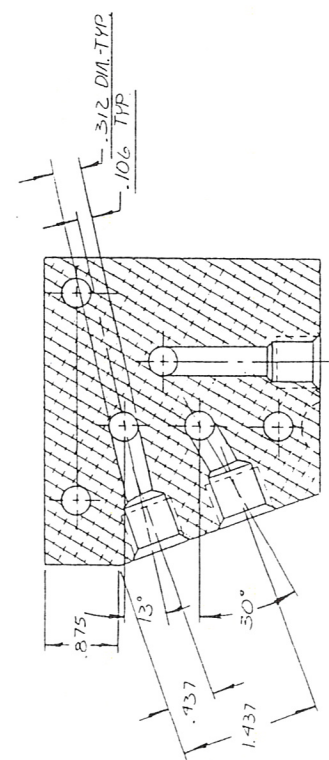
3/32 DIA. 3 HOLES  
3/32 DIA. 3 HOLE DEEP .0625  
DEEP - 3 RAILS



5/16 DIA. X .62 DEEP 9/16-18 UNF .28  
STRAIGHT THREAD O-RING BOSS  
AS PER SAE J5149 SPEC. 3 HOLES  
SEE SEC. B-B



SECTION B-B  
SCALE: DOUBLE



SECTION 1-A

REVISION	REVISIONS	SCALE	TITLE	DATE	DRAWN BY	CHECK BY
8255		FULL	ADAPTOR BLOCK	10/16/48	SM/6-4-87	SM/6-4-87
			MATERIAL		ALUMINUM AEC AMBULE	7351
			NAME		ADAPTOR BLOCK	1-761
			NEXT ASBY.			
			PART NUMBER			36933



UNLESS OTHERWISE SPECIFIED  
ANGLES 2° .36 DECIMALS 2.0° .56 DECIMALS 2.00