

**BUNDLE 2-5938
MOUNTING KIT INSTRUCTIONS FOR
FORD 5640, 6640 & 7740
2WD TRACTORS WITH OR LESS CAB**

The mounting brackets can be installed using tools ordinarily available. Shut off the tractor engine and engage tractor brakes during installation.



WARNING: *Front axle tread setting must not exceed 76 inches (1.93 meters).*

If the tractor is equipped with a cab, it is necessary to remove the cab-mounted headlights mounted just above the handrails before mounting the loader. Also, if the tractor is equipped with a toolbox, it will be necessary to remove or relocate the toolbox where it will not interfere with the loader.

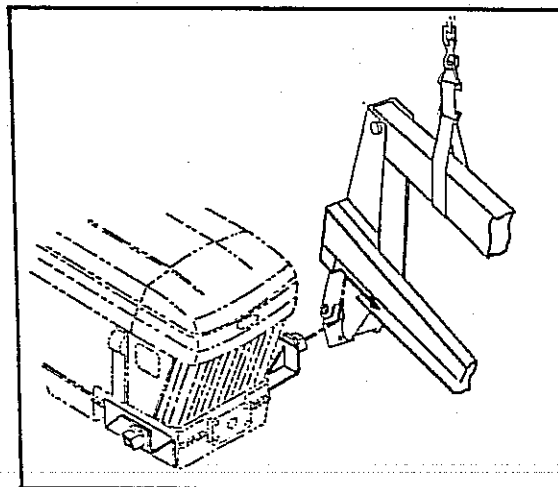
NOTE: *Tighten all hardware, except 3/4 x 5 cap screws (12) and lock nuts (17), to the torque specifications in the loader operator's manual.*

INSTALLING LOADER MOUNTING BRACKETS

1. Fasten front mounting brackets (1 & 2) to each side of tractor front casting using 3/4 x 1-3/4 cap screws (13) and lock washers (16).
2. Fasten mid mounting brackets (3 & 4) to lower pads on tractor transmission casting and to tractor front casting using 3/4 x 1-3/4 cap screws (13) and lock washers (16).
3. With the outer ends slanted toward the front of the tractor, elevate the mid mounting crosstie (5) to the mid mount brackets (3 & 4). Loosely fasten mid mounting crosstie (5) to mid mount brackets (3 & 4) using 3/4 x 5 cap screws (12), crosstie clamp flats (6) and lock nuts (17).

INSTALLING LOADER ONTO MOUNTING BRACKETS

1. Temporarily remove 3/4 x 3 cap screws, nuts and washers which clamp loader hinges shut.
2. Attach nylon slings around the loader front bumper and use an overhead hoist to support the loader while removing the hardware securing the loader to the shipping timbers.
3. Use the overhead hoist to raise the loader off the shipping timbers and lower to a horizontal position. Attach the nylon slings around the lift boom arms and use the overhead hoist to raise the loader and position notch in rear of side frame channels over the front mounting brackets.



INSTALLING LOADER ONTO MOUNTING BRACKETS (Continued)



CAUTION: *Make sure both front mountings engage loader side frame channels thru notches provided.*

4. Slide the loader to the rear until side frame uprights are over the mid mounting tubes.
5. Position loader front bumper against front mounting brackets (1 & 2). Clamp hinges around tubes of mid mounting crosstie (5). Fasten with 3/4 x 3 cap screws, flat washers and lock nuts (removed in instruction 1 above).
6. Center the loader and tighten 3/4 x 5 cap screws (12) and lock nuts (17).
7. Refer to the loader owner's manual and plumbing kit instructions to complete the loader installation and for location of decals.

INSTALLING REFUELING STEPS

1. Fasten the bucket refueling step (9) to the back of the bucket or bucket ear. The bucket step (9) can be installed at the right or left side of the bucket depending on the operator's preference. Make sure the location of the bucket step is such that it does not interfere with the bucket cylinder or quick attach handles and does not interfere with installation or removal of cylinder pins.

- A. **FOR PIN-ON STYLE BUCKETS:** For 60" buckets, drill one 21/32" (17mm) hole through the bucket 2" (51mm) in from the inner bucket ear and 3" (76mm) down from the bend in the back of the bucket. For buckets wider than 60", drill one hole at least 6" (152mm) out from the outer bucket ear and 3" (76mm) down from the bend in the back of the bucket. Drill a second 21/32" (17mm) hole 1-5/8" (41mm) away from and level with the first. Using the anti-rotation angle (10) as a reinforcement plate inside the bucket, fasten the bucket step (9) and anti-rotation angle (10) to the bucket using 5/8 x 1-1/2 cap screws (14) and lock nuts (18).

ALTERNATELY: The step can be welded onto the top surface of the bucket back. Be sure to choose a location where the step will not interfere with the loader bucket cylinders, or grapple fork if the bucket is so equipped.

- B. **FOR QUICK-ATTACH BUCKETS LESS GRAPPLE FORK:** Fasten bucket step (9) and anti-rotation angle (10) to top-most square hole in bucket ear using one 5/8 x 1-1/2 cap screw (14) and lock nut (18).
 - C. **FOR QUICK-ATTACH BUCKETS WITH GRAPPLE FORK:** Remove the lock nut from the top-most carriage bolt which secures the grapple fork channel to the bucket ear on the side where the step is to be installed. Place the bucket step (9) inside the grapple fork channel, and anti-rotation angle (10) as a reinforcement plate inside the step. Fasten the angle (10) and step (9) to grapple fork channel and bucket ear using one lock nut (18).
 - D. **FOR QUICK ATTACH BALE SPEAR:** Drill a 21/32 (17mm) hole in the outer ear of bale spear 3" (76mm) from the back of the bale spear frame and 1-25/32" (45mm) down from the top. Using anti-rotation angle (10) as a reinforcement plate inside the step, fasten the angle (10) and plate (9) to the bale spear ear using 5/8 x 1-1/2 cap screw (14) and lock nut (18).
2. Peel backing off of adhesive anti-slip surface strip (11) and apply at the center of the top of the bucket.

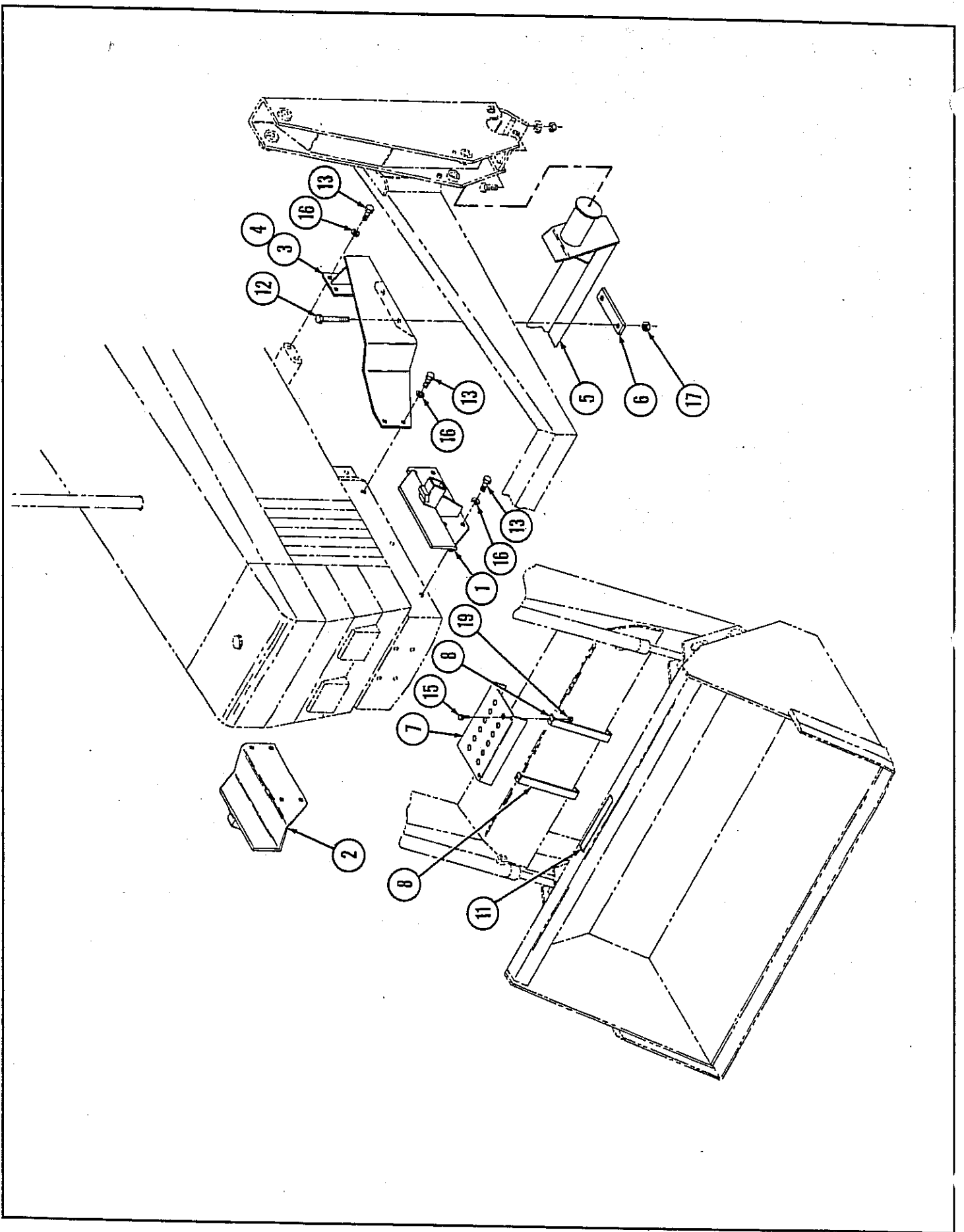
INSTALLING REFUELING STEPS (Continued)

- Loosely assemble step straps (8) to step (7) with 5/16 x 1-1/4 cap screws (15) and lock nuts (19). Hook straps (8) to front underside of loader boom crossmember at the center and position the step (7) over the oil lines. Hook the rear flange of the step over the back of the crossmember. Tighten lock nuts (19) to clamp the step to the boom crossmember.

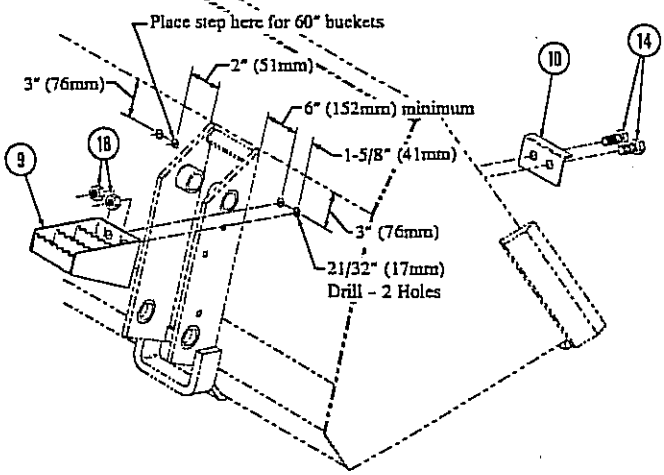
IMPORTANT: Make certain the step assembly is *SECURELY* clamped onto the boom crossmember.

PARTS LIST

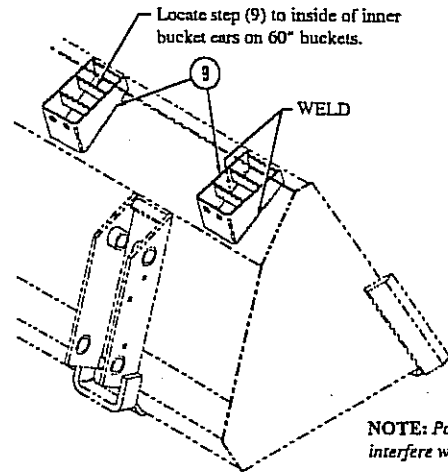
Item	Part No.	Description	Qty.
1	40553-1	BRACKET, Front, Left	1
2	40553-2	BRACKET, Front, Right	1
3	40584-1	BRACKET, Mid, Left	1
4	40584-2	BRACKET, Mid, Right	1
5	40591	CROSSTIE, Mid Mounting	1
6	36478	CLAMP, Flat	2
7	40596	STEP, Refueling, Loader Boom Crossmember	1
8	40594	STRAP, Step Clamp	2
9	40807	STEP, Refueling, Bucket	1
10	40808	ANGLE, Step Anti-Rotation	1
11	25820-3	TREAD, Anti-Slip Surface, Adhesive Back	1
12	G271783	SCREW, Cap, 3/4-10 x 5	4
13	G271769	SCREW, Cap, 3/4-10 x 1-3/4	16
14	G271547	SCREW, Cap, 5/8-11 x 1-1/2	2
15	G180081	SCREW, Cap, 5/16-18 x 1-1/4	2
16	G131046	WASHER, Lock, 3/4	16
17	G9414076	NUT, Lock, 3/4-10	4
18	G9414075	NUT, Lock, 5/8-11	2
19	G9413447	NUT, Lock, 5/16-18	2



**INSTALLING BUCKET STEP
ON PIN-ON BUCKETS**

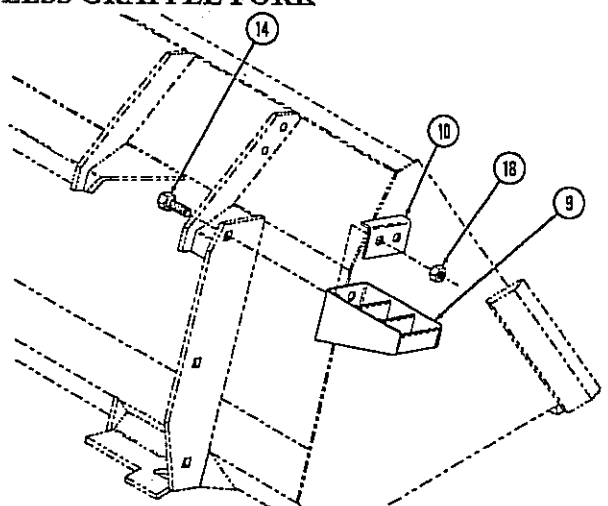


**ALTERNATE INSTALLATION
FOR PIN-ON BUCKETS**

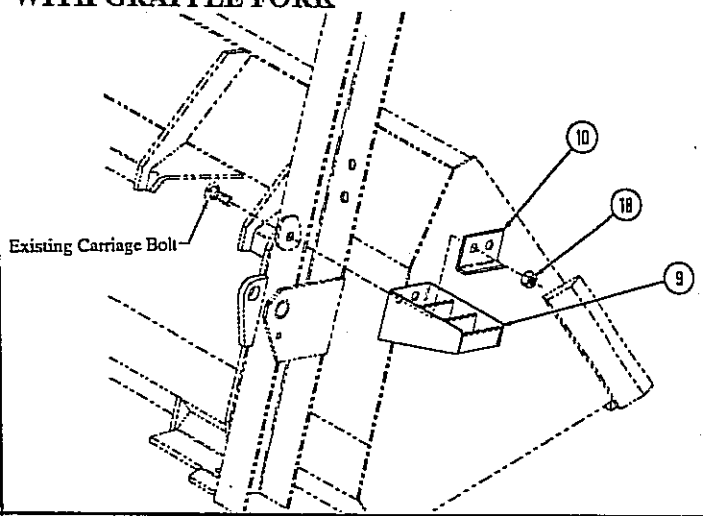


NOTE: Position step (9) so it does not interfere with the bucket cylinder.

**INSTALLING BUCKET STEP
ON QUICK-ATTACH BUCKETS
LESS GRAPPLE FORK**



**INSTALLING BUCKET STEP
ON QUICK-ATTACH BUCKETS
WITH GRAPPLE FORK**



**INSTALLING BUCKET STEP
ON QUICK-ATTACH BALE SPEAR**

