

BUNDLE 2-6048
LOADER HOSE KIT INSTRUCTIONS
FOR JOHN DEERE 955 2WD & FWD TRACTORS

Hose kit can be installed on loader using tools ordinarily available. Shut off tractor engine and engage tractor brakes during installation.

***NOTE:** Apply sealant only to all tapered threads unless coupled with swivel adapters. When using teflon tape, wrap tape clockwise (as viewed from end) and wrap tape only twice. Keep sealant away from first two threads of tapered end to prevent contamination of hydraulic fluid. Do not use sealant on o-ring or flare adapter threads.*

PLUMBING LOADER TO TRACTOR QUICK COUPLERS (Figure 1)

1. Install male quick couplers (not supplied) to male ends of hoses (1 & 11). Install silver and yellow identification bands (4 & 5) onto male quick couplers on hoses (1). Install green and black identification bands (6 & 7) onto male quick couplers on hoses (11).

***NOTE:** Male quick couplers compatible with female quick couplers originating from tractor valve are available through most dealers. The following chart lists some compatible couplers.*

CATALOG	PART NUMBER	DESCRIPTION
PARKER (PIONEER)	410-T6-413	1/4" MALE TIP
JOHN DEERE	AM102420	9/16-18 O-RING



2. Install 3/4 O-Ring x 3/4-16 female JIC swivel adapters (10) into one side of relief valve housing (8). Install relief valve housing with relief cartridge down onto ends of lower two steel oil lines. Trace these lines to make sure the bottom line feeds the base (upper) end of the lift cylinder.
3. Connect female ends of hoses (1) to top two boom oil line tubes according to color of identification band as follows: hose with black band (6) to bottom oil line tube (lift cylinder base); hose with green band (7) to second from bottom (lift cylinder rod); hose with silver band (4) to second from top (bucket cylinder rod); and hose with yellow band (5) to top oil line (bucket cylinder base). Loosening the first oil line clamp will ease hose installation.
4. Bundle the four hoses together and slip them through 132" nylon sleeve (3). Route hoses down along side frame upright into side frame channel. Route hoses inside right frame channel, loader front bumper and left side frame channel to tractor quick couplers. Connect each male quick coupler to female quick coupler (from tractor valve) with matching identification band color. Fasten one 20" tie strap (2) around each side frame channel and fasten two 20" tie strap (2) around loader front bumper at approximately equal distances to secure hoses in place.
5. After all plumbing has been completed, start tractor engine and slowly cycle lift and bucket cylinders several times to free the system of air. Retract cylinders and stop engine. Add additional tractor hydraulic fluid as specified in the tractor operators manual to bring the fluid level up to the full mark.

***NOTE:** When cycling the loader, operate valve lever according to valve operation decal. If direction of control lever is reversed, recheck connections at quick couplers.*

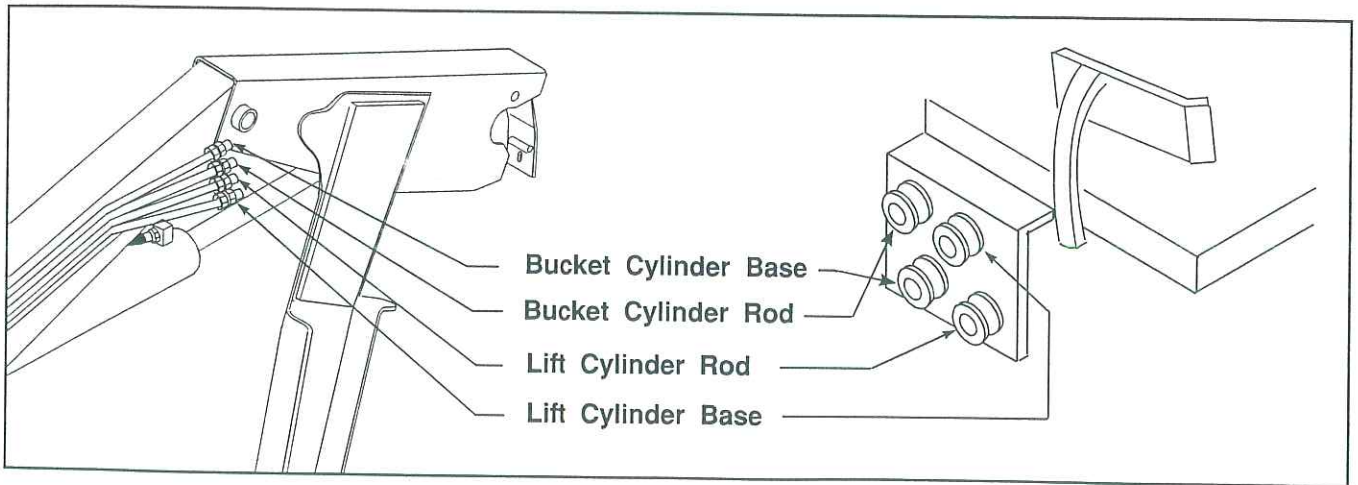
PLUMBING LOADER TO TRACTOR QUICK COUPLERS (Continued)(Figure 1)



WARNING: Escaping hydraulic fluid under pressure can have sufficient force to penetrate skin causing serious personal injury. If injured by escaping fluid, obtain medical treatment immediately.

PARTS LIST

Item	Part No.	Description	Qty.
1	38576-3	HOSE, 3/8 x 144"	2
2	8137-3	STRAP, Reusable Tie, 20"	4
3	34853-12	SLEEVE, Nylon, 1.59 x 132"	1
4	37599-1	BAND, Colored, Silver	1
5	37599-2	BAND, Colored, Yellow	1
6	37599-3	BAND, Colored, Black	1
7	37599-4	BAND, Colored, Green	1
8	43572	HOUSING, Relief Valve	1
9	33213-5	CARTRIDGE, Relief	1
10	42062-1	FITTING, Swivel 3/4-16 O-Ring x 3/4-16 Female JIC	2
11	43437-1	HOSE, 3/8 x 144"	2



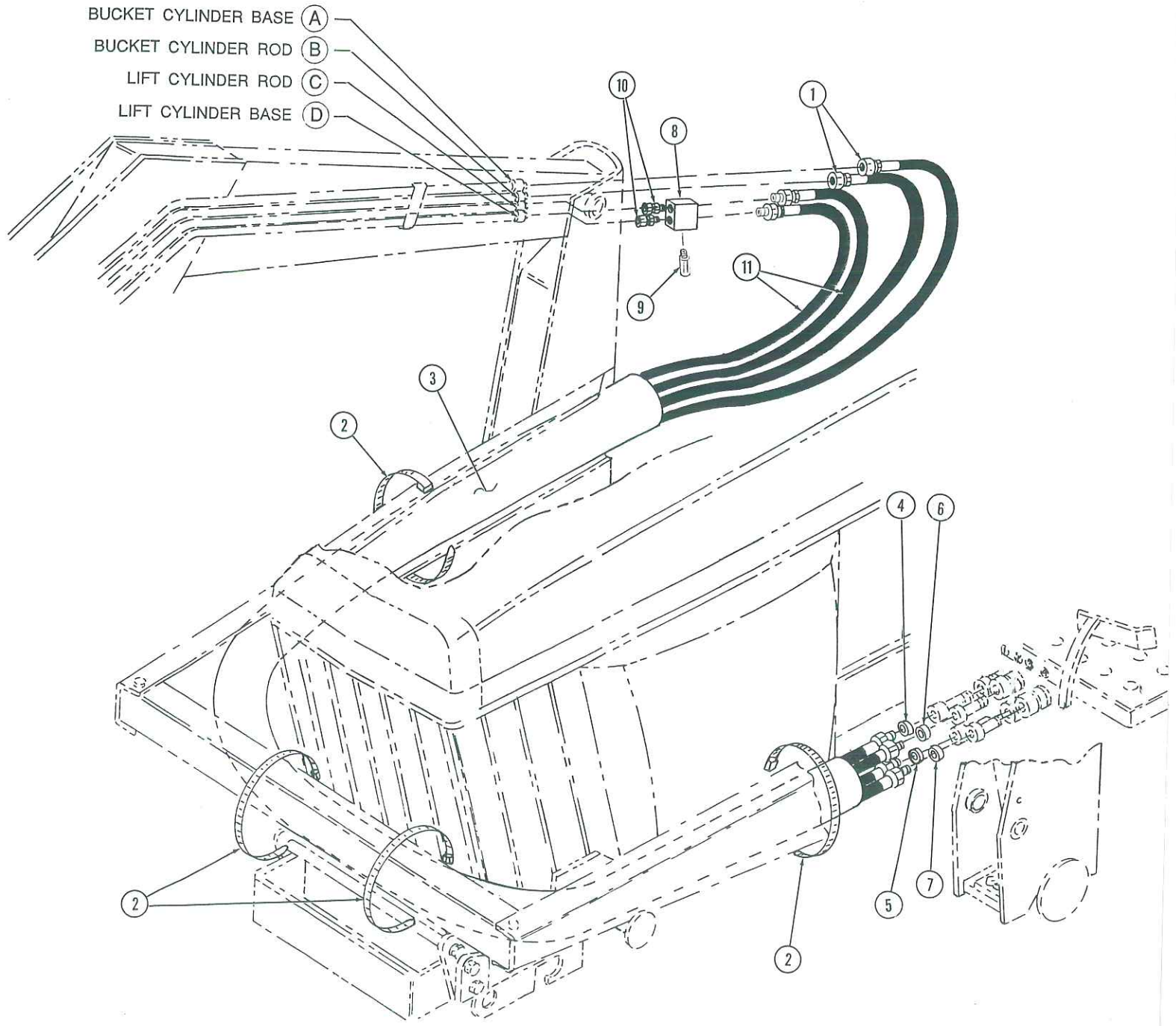


Figure 1