

Keep With Loader Operator's Manual

## SMC 2491 LOADER MOUNTING KIT INSTRUCTIONS MASSEY FERGUSON

MODEL	2WD	4WD	LESS CAB	WITH CAB
240		X	X	
253		X	X	

Mounting brackets can be installed using tools ordinarily available. Shut off tractor engine and engage tractor brakes during installation.

After loader is installed, check to be sure front tires clear loader and mounting brackets in all possible positions. To avoid interference between tires and loader boom arms.

**NOTE:** Leave all attaching hardware loose until mounting brackets are completely assembled to facilitate assembly and proper alignment.

### INSTALLING MOUNTING BRACKETS (Figure 1)

1. Install front mounting bracket (1) to tractor front casting using 5/8 x 1-1/2 cap screws (4) and 5/8 lock washers (9).

2. Remove and discard inspection plate on bottom of transmission casting.

**NOTE:** Using two people, position midmounting bracket (2) in place and loosely secure to sides of transmission casting using 5/8 x 1-1/2 cap screws (4).

3. Install midmounting bracket (2) to bottom of tractor using 5/8 x 1-1/2 cap screws (4) and 5/8 lock washers (9).
4. Install midmounting bracket (2) to sides of transmission casting using 5/8 x 1-1/2 cap screws (4), 5/8 lock washers (9) and 5/8 flat washers (12) in front holes and 5/8 x 2-1/4 cap screws (8), 5/8 lock washers (9) and 5/8 flat washers (12) in rear holes.

**NOTE:** Tighten all hardware to torque specifications in loader operators manual.

### PARTS LIST - MOUNTING KIT

ITEM	PART NO.	DESCRIPTION	QTY.
1	43729	BRACKET, Front Mounting	1
2	43710	MIDMOUNTING, Assembly	1
3	43719	BRACKET, Upper Tube	1
4	G271547	SCREW, Cap, 5/8-11 x 1-1/2	16
5	G9414975	NUT, Hex, Lock, 5/8-11	4
6	43722	YOKE	1
7	39240	DECAL, WARNING, Do Not Tow...	2
8	G271724	SCREW, Cap, 5/8-11 x 2-1/4	2
9	G121574	WASHER, Lock, 5/8	14
10	G271773	SCREW, Cap, 3/4-10 x 2-1/2	4
11	G9414076	NUT, Lock, 3/4-10	4
12	G131016	WASHER, Flat, 5/8	4
13	43129	CYLINDER, Lift, 2-3/8	2
14	6075-4	FITTING, Grease, 1/4-28	4

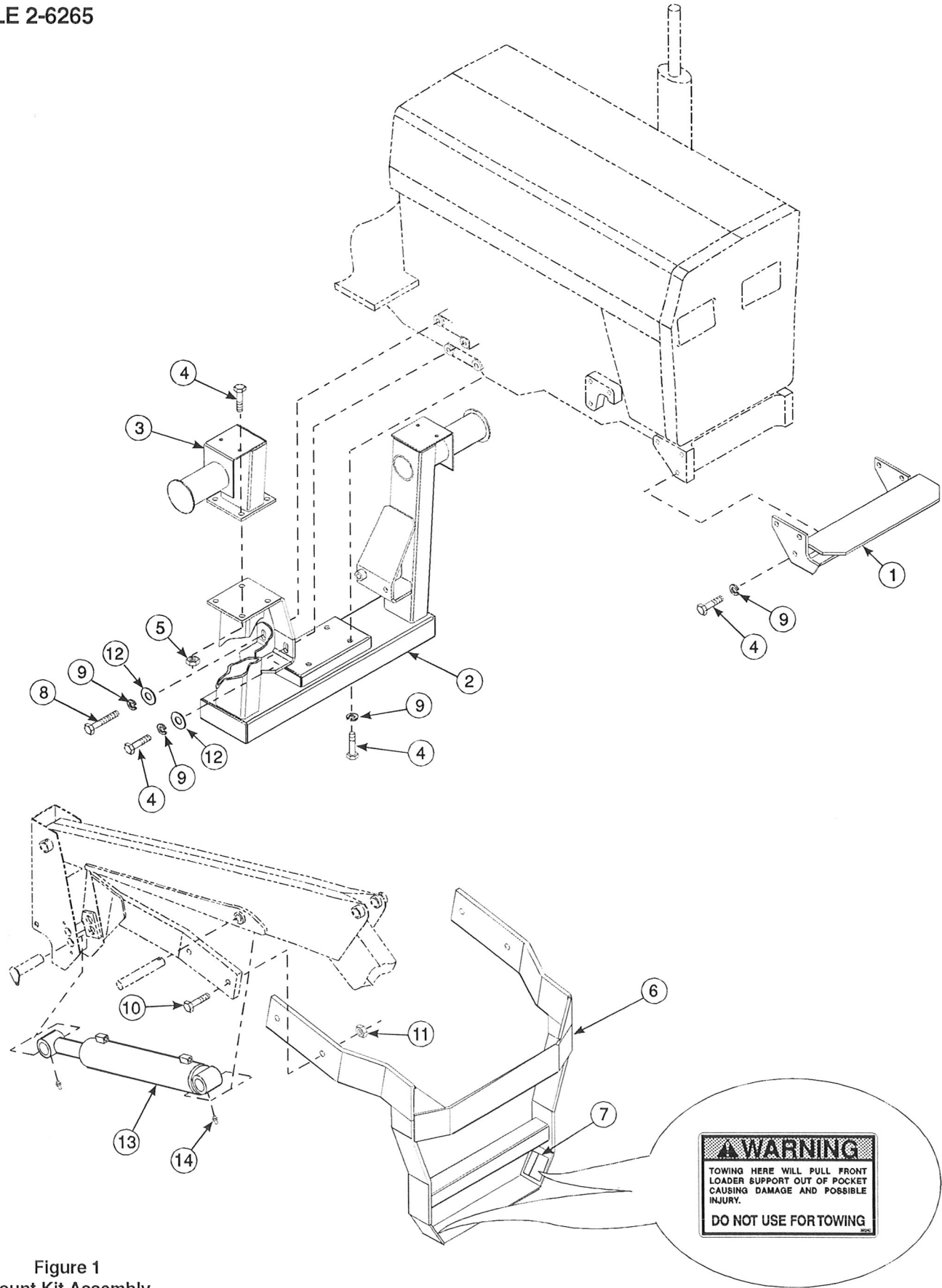


Figure 1  
Mount Kit Assembly

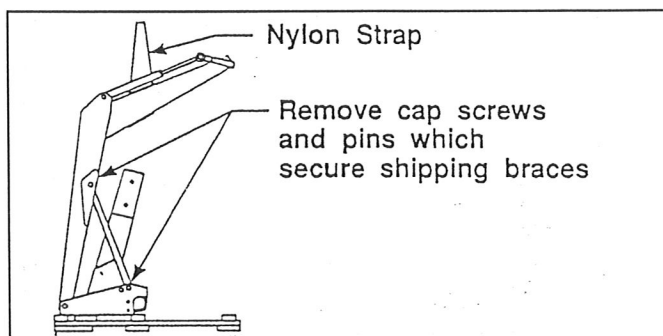
## INSTALLING LIFT CYLINDERS

1. Install grease fittings (14) to base and rod ends of lift cylinders (13) with fittings pointing down.



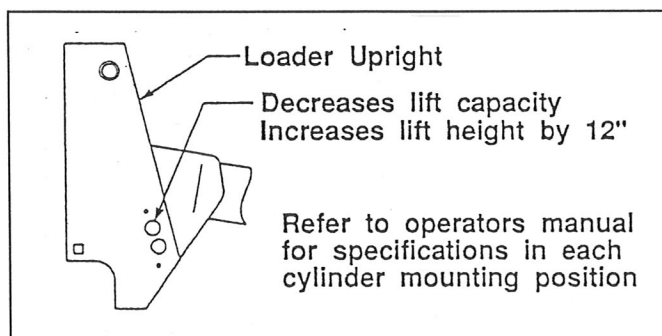
**WARNING:** Be sure to support loader using an overhead hoist. Installed lift cylinders will not support loader in upright position. Boom may fall causing serious personal injury.

2. Loop nylon strap around center of boom crossmember. Using overhead hoist to support loader, remove cap screws and pins which secure shipping braces.



3. Install lift cylinders (13), with base end toward front and hydraulic ports toward top, using hardware previously removed. **See chart for optional cylinder placement.**

**NOTE:** Pin rod end into loader upright first, then pin base end into loader boom.



4. Disconnect lift cylinder hoses from steel oil lines one at a time to avoid error when reconnecting.

**NOTE:** Lift cylinder hoses must be free to turn while they are being connected to lift cylinders.

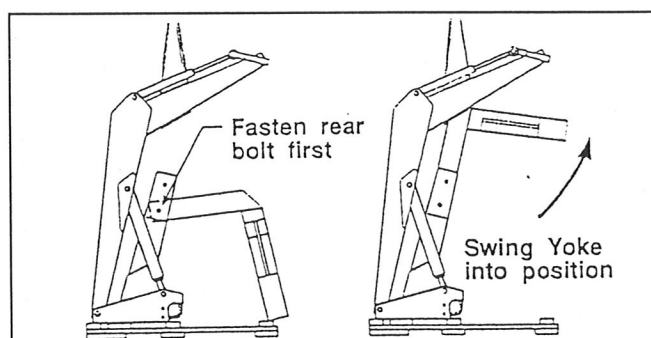
5. Connect hoses to lift cylinders. Reconnect hoses to steel oil lines.

## INSTALLING LOADER TO MOUNTING BRACKETS



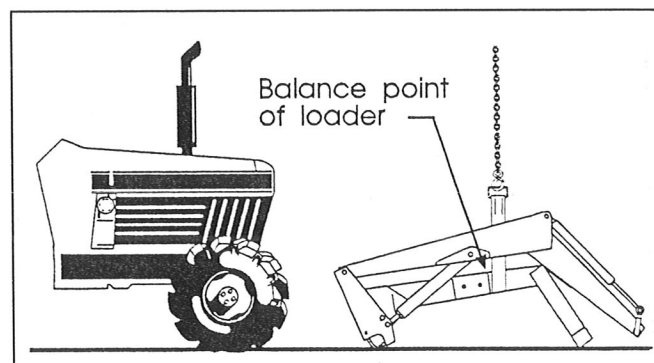
**WARNING:** To avoid injury during installation of quick attach loader, do not permit bystanders within ten feet of loader.

1. Install yoke assembly (6) using 3/4 x 2-1/2 cap screws (10) and 3/4 lock nuts (11). Install rear cap screws first and swing yoke into position, then install front cap screws.



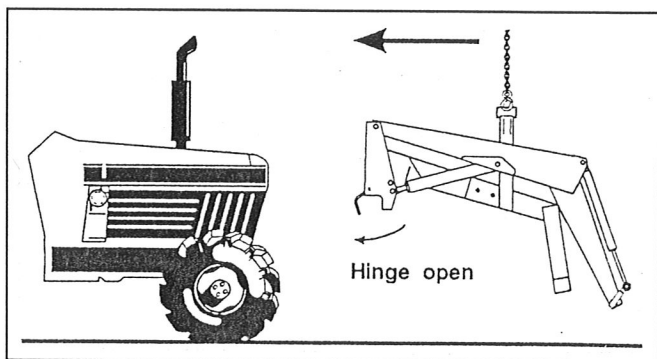
**NOTE:** Hardware connecting yoke to loader sideframes should be snug but do not torque completely. After loader has been mounted to tractor and aligned with midmounting brackets and front mounting brackets, torque hardware to 239-262 ft. lb.

2. Remove hardware securing loader to pallet. Using overhead hoist, lower loader from vertical shipping position to horizontal position (scraps of cardboard may be used to protect paint).
3. Install hose or valve kit to tractor and loader. Refer to assembly manual provided for installation instructions.
4. Reposition overhead hoist by looping nylon strap around yoke near loader side frames at balance point of loader.
5. Using overhead hoist, raise loader until side frame uprights will clear front tires. Remove locknut and washer from loader hinge and swing each hinge open.



## BUNDLE 2-6265

### INSTALLING LOADER TO MOUNTING BRACKETS (Continued)

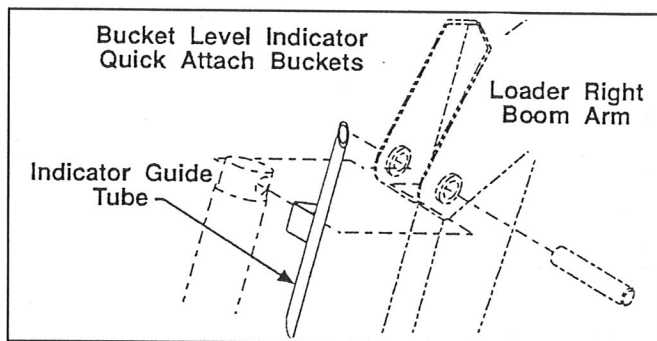


6. Position loader so hinges hook over mid mounting tubes and yoke tube fits inside front mounting bracket.

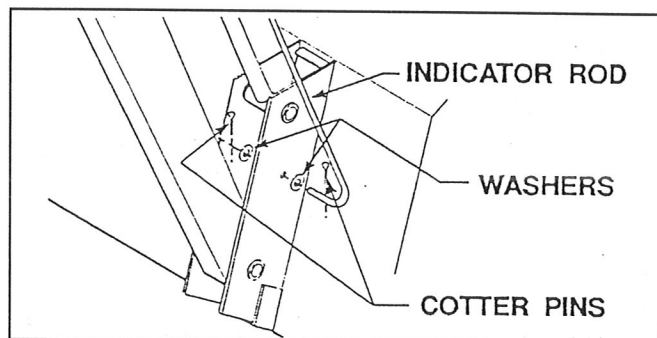
7. Clamp hinges to midmounting tubes with 3/4 flat washers and 3/4 flex-lock nuts (supplied with loader).

**IMPORTANT:** Be sure to use flex-lock nuts to clamp hinge. Tighten flex-lock nuts against hinge securely, but not to more than 125 ft.-lb. torque.

8. Adjust front wheel tread settings or steering stops, if necessary to prevent interference between tires and loader. Refer to tractor operator's manual for adjustment procedures.



2. Slide bucket level indicator rod through guide tube. Attach other end of rod with 1/8 x 1 cotter pins and 3/8 flat washers. If pin on bucket is used, attach lower end of rod to bucket ear. If quick attach device is used, attach lower end of rod to quick attach device.



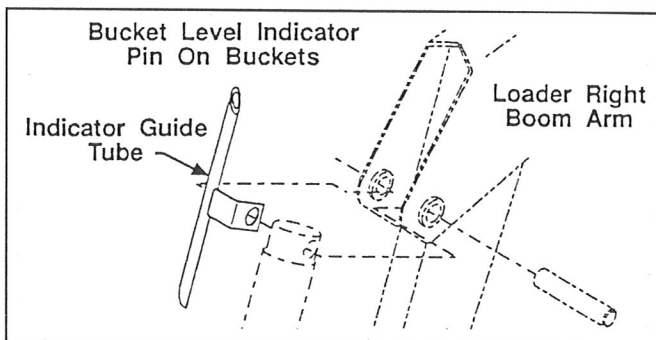
3. Locate tractor and loader on level surface. With bottom of bucket resting on surface, cut off excess rod flush with end of guide tube or paint exposed rod a contrasting color.

### INSTALLING BUCKET OR OPTIONAL ATTACHMENT

Refer to loader operator's manual for instructions on installing bucket or optional attachment.

### INSTALLING BUCKET LEVEL INDICATOR

1. Attach indicator guide tube to cylinder pin. Guide tube is positioned to outside of boom for pin on attachments and inside of boom when quick attach device is used.



### REPLACING AIR FILTER (Figure 1)

1. Dismount loader from tractor. Refer to "Dismounting Loader" section in loader owner's manual for proper procedure.
2. Remove upper tube bracket (3) by removing 5/8 x 1-1/2 cap screws (4) and 5/8 lock nuts (5) which secure it to loader midmounting assembly (2).
3. Service air cleaner according to instructions in tractor owner's manual.
4. Secure upper tube bracket (3) to loader midmounting assembly using 5/8 x 1-1/2 cap screws (4) and 5/8 lock nuts (5). Torque hardware according to "Specifications" chart in loader owner's manual.
5. Refer to "Mounting Loader" section in loader owner's manual to mount loader onto tractor.

**NOTE:** Recheck torque settings on 5/8 x 1-1/2 cap screws (4) and 5/8 lock nuts (5) after 1 hour of operation.