
**QUICK ATTACH
PALLET FORK**

**NEW HOLLAND 72LA, 7312, 7314, 7411, 7412, 7412HD &
7413 LOADERS**

7312 loader must be equipped with quick attach device 9863759 (Bundle 2-6303) to install pallet fork.

ASSEMBLING PALLET FORK

Remove existing attachment from loader. Refer to loader owner's manual for detaching and attaching instructions.

1. Position tractor and loader on smooth hard surface. Using overhead hoist, attach pallet fork frame to loader.
2. Lower pallet fork frame to ground. Remove shafts (5) from pallet fork frame.

3. Install tines (4) to pallet fork frame (1) using shafts (5), bushings (8), 5/16 x 2 cap screws (2) and 5/16 lock nuts (3).

NOTE: *If installing optional rollback protector, install tines and rollback protector at same time.*



WARNING: *Do not weld to pallet fork tines. Tines are high carbon steel and may break under load after being welded, causing serious injury or death.*

PARTS LIST - PALLET FORK

ITEM	PART NO.	NH NO.	DESCRIPTION	QTY.
1	44010	SML44010	FRAME, Pallet Fork	1
2	41838-28	280649	SCREW, Cap, 5/16-18 x 2	4
3	41840-2	87382	NUT, Lock, 5/16-18	4
4	45583	SML45583	TINE, Pallet Fork	2
5	43836-3	SML438363	SHAFT, Tine	2
6	43821	SML43821	DECAL, Warning: Pinch Area	2
7	43830	SML43830	DECAL, Pallet Fork Rating	2
8	42502-18	SML4250218	WASHER, Flat, 1-3/8	4

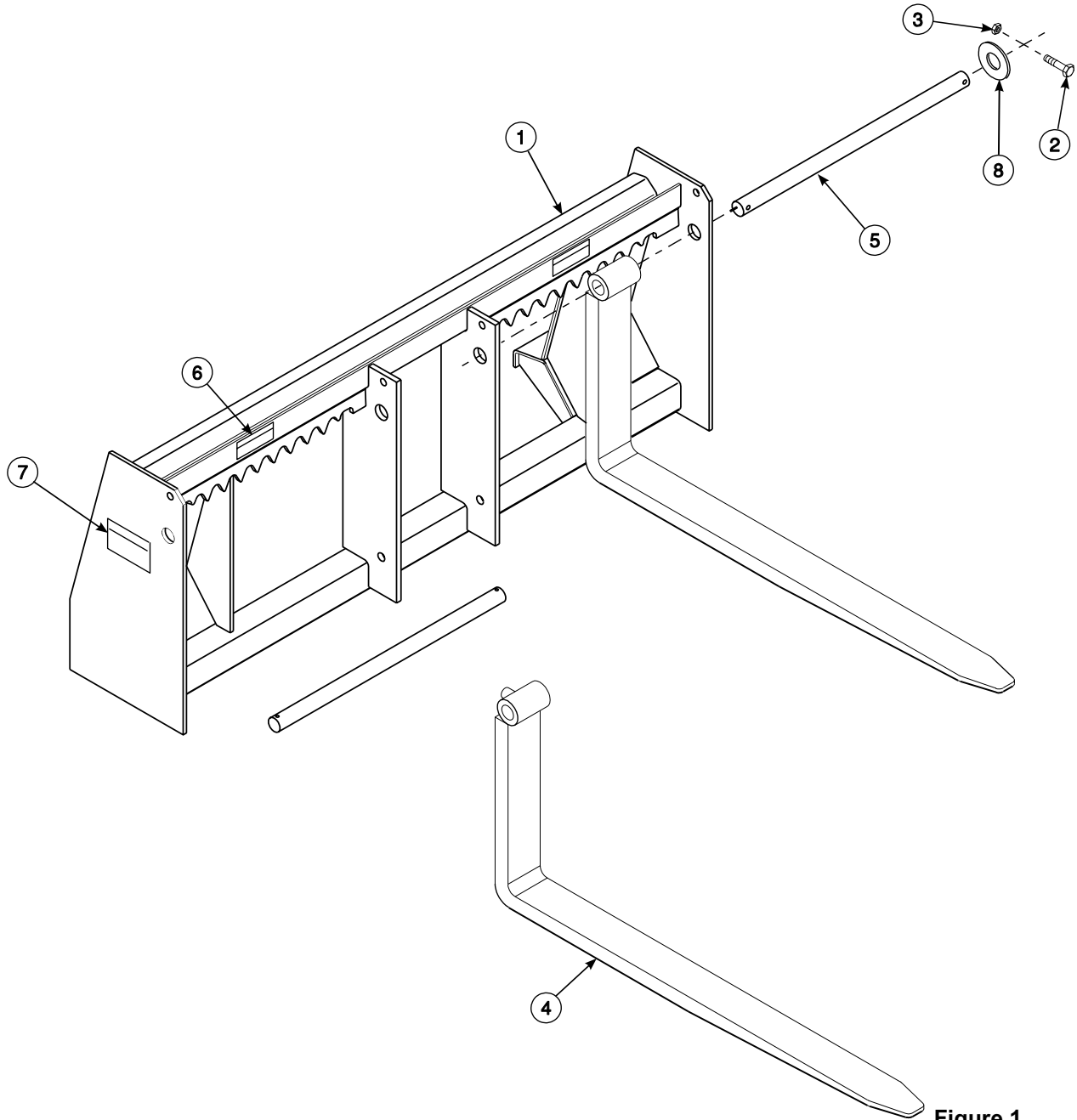


Figure 1
PALLET FORK

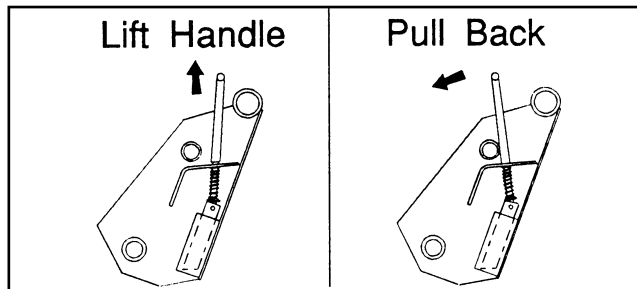
ATTACHING QUICK ATTACH PALLET FORK

No tools are needed to install quick attach pallet fork. 7312 loader must be equipped with quick attach device 9863759 (2-6303).



WARNING: To avoid injury during attachment or detachment, do not allow bystanders within 10 feet of loader or attachment.

1. Locate tractor and pallet fork on firm level ground. Lower boom to three to five inches off ground.
2. Disengage latch pins by lifting handles and pulling them rearward, so latch pins are held in raised position.
3. Extend bucket cylinders slightly. Making sure loader quick attach bar is parallel to attachment, drive tractor ahead very slowly toward attachment until quick



attach bar touches attachment just below attachment channel.

4. Use lift cylinder to raise loader while activating bucket cylinder to curl quick attach device to engage channel of attachment. Moving tractor forward will assist engagement.

7314, 7411, 7412 & 7413 Loaders - When quick attach bar has fully engaged attachment channel continue to retract bucket cylinder until latch pins engage attachment securely.

7312 Only - When quick attach bar has fully engaged attachment channel; shut off engine, engage brakes and manually engage bucket quick attach device latch pins.

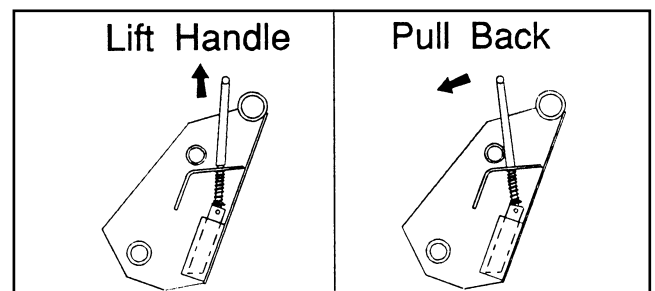
5. Tilt attachment at a slight downward angle, so quick attach device is visible and inspect attachment mechanism to verify that pins are fully engaged in ears on back of attachment.

NOTE: If attachment is not securely latched, follow instructions for detaching bucket and repeat above procedure.

DETACHING QUICK ATTACH PALLET FORK

IMPORTANT: Loader must be equipped with a bucket, bale spear or similar attachment to dismount loader from tractor.

1. Locate tractor and attachment on firm level ground.
2. Lower boom arms until bucket rests level two to three inches off ground. Shut off tractor engine and set tractor brakes.
3. Disengage latch pins by lifting handles and pulling them rearward, so latch pins are held in raised position.



4. Start tractor engine, release tractor brakes and extend bucket cylinders while slowly backing tractor away from attachment, until quick attach bar disengages from attachment.

2-6299
2-6964

715769001
715769006

INSTALLATION INSTRUCTIONS