

Keep With Loader Operator's Manual

MOUNTING KIT INSTRUCTIONS

NEW HOLLAND 7312 LOADER

NEW HOLLAND TRACTORS

MODEL	2WD	4WD	LESS CAB	WITH CAB
5640		X	X	X
6640		X	X	X
7740		X	X	X

Mount kit can be installed using tools ordinarily available. Shut off engine and engage brakes during installation.

NOTE: Leave all attaching hardware loose until loader is completely assembled to facilitate assembly and proper alignment. Torque hardware to torque specifications on page 6.

TRACTOR PREPARATION



WARNING: Front axle tread setting must not exceed 76 inches.

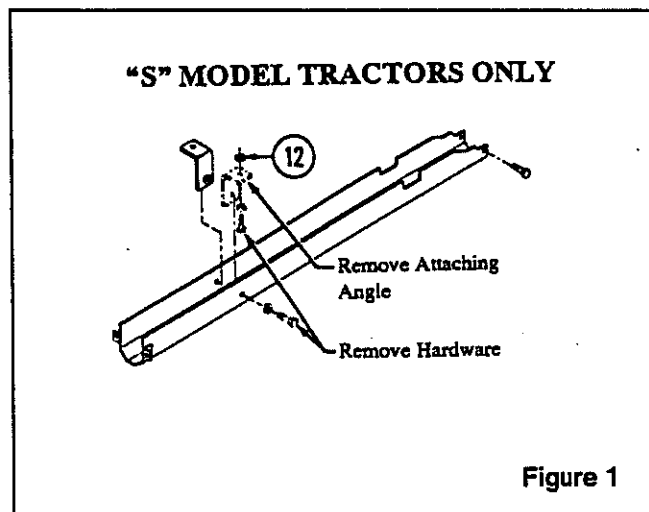
1. FWA tractors - front axle oscillation stops and must be used with loader installation.
2. Tractor steering stops must be adjusted to provide a minimum clearance of 3/4" between front tire and any part of loader on full left and right lock with front axle fully oscillated. Adjustment must be made with lift cylinders fully retracted. Refer to tractor operator's manual for steering stop adjustment.
3. For tractors equipped with cab, it is necessary to remove cab-mounted headlights located just above handrails before mounting loader (optional relocation kit is available from your New Holland dealer).
4. If tractor is equipped with front fenders, they must be removed. Fender brackets must be positioned to widest mounting on front axle or removed.
5. Front weights and bracket must be removed before installing mounting.
6. Tractors equipped with a toolbox, it will be necessary to relocate it where it will not interfere with loader.
7. Tractors equipped with radar gun it is necessary to remove it and relocate it onto the left side midmounting bracket (Figure 4 on page 6).

INSTALLING LOADER MOUNTING BRACKETS (Figure 3)

NOTE: Some attaching hardware is used to secure parts on pallet. Save pallet hardware until all attaching hardware is accounted for.

NOTE: Unless otherwise specified, leave all attaching hardware loose until mounting brackets are completely installed to facilitate assembly and proper alignment of mounting brackets.

1. Fasten front mounting bracket (1) to front of the tractor using 3/4 x 1-3/4 cap screws (8) and lock washers (11).
2. For "S" model tractors only, remove 3/4 cap screws which fasten FWA driveshaft guard to the underside of tractor transmission. Remove left attaching angle with fastening hardware from the driveshaft guard and discard (Figure 1).



3. Remove bolt securing air conditioner hose bracket to bottom of tractor to ease installation. Position left midmounting bracket (2) in place between airconditioning hoses. Fasten left mid mounting bracket (2) to left side of tractor using 3/4 x 1-3/4 cap screws (8) and lock washers (11) in holes at the front, and 3/4 x 1-1/2 cap screws (9) and lock washers (11) in holes at the rear. "S" model tractors place one flat washer (12) between left mid mounting bracket (2) and underside to tractor transmission. "SL" and "SLE" tractors, omit above spacer washer unless tractor does not have FWA driveshaft shield. Fasten 3/4 x 4 cap screw (7) with a flat washer (12) and lock washer (11) through bottom of left mid mounting bracket (2) into underside of tractor transmission.
4. Reinstall bolt securing air conditioning hose bracket to bottom of tractor. Check airconditioning lines for clearance and adjust if needed.

NOTE: If tractor is equipped with radar gun, to ease drilling process, drill holes as indicated on Page 6 Figure 4 before mounting right midmounting bracket.

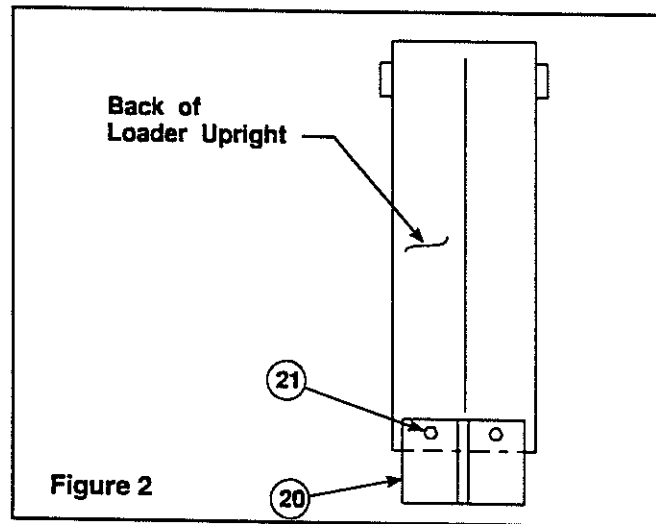
5. Fasten right mid mounting bracket (3) to right side of tractor using 3/4 x 1-3/4 cap screws (8) and lock washers (11) in holes at front and 3/4 x 1-1/2 cap screws (9) and lock washers (11) in holes at the rear. "SL" and "SLE" models that do not have a drive shaft shield, place one flat washer (12) as a spacer between right midmounting bracket (3) and underside of tractor transmission. All models with driveshaft

shields omit above washer. Fasten remaining 3/4 x 1-1/2 cap screw (9) with a flat washer (12) and lock washer (11) through bottom of right mid mounting bracket (3), through spacer (12)(or driveshaft guard bracket) into underside of tractor transmission.

6. Install spacer plates (20) to back of each upright using 3/8 x 1 cap screws (21) and 3/8 lock nuts (22) (Figure 2).
7. Reinstall radar gun to left side midmounting bracket if tractor is so equipped (hardware not included).



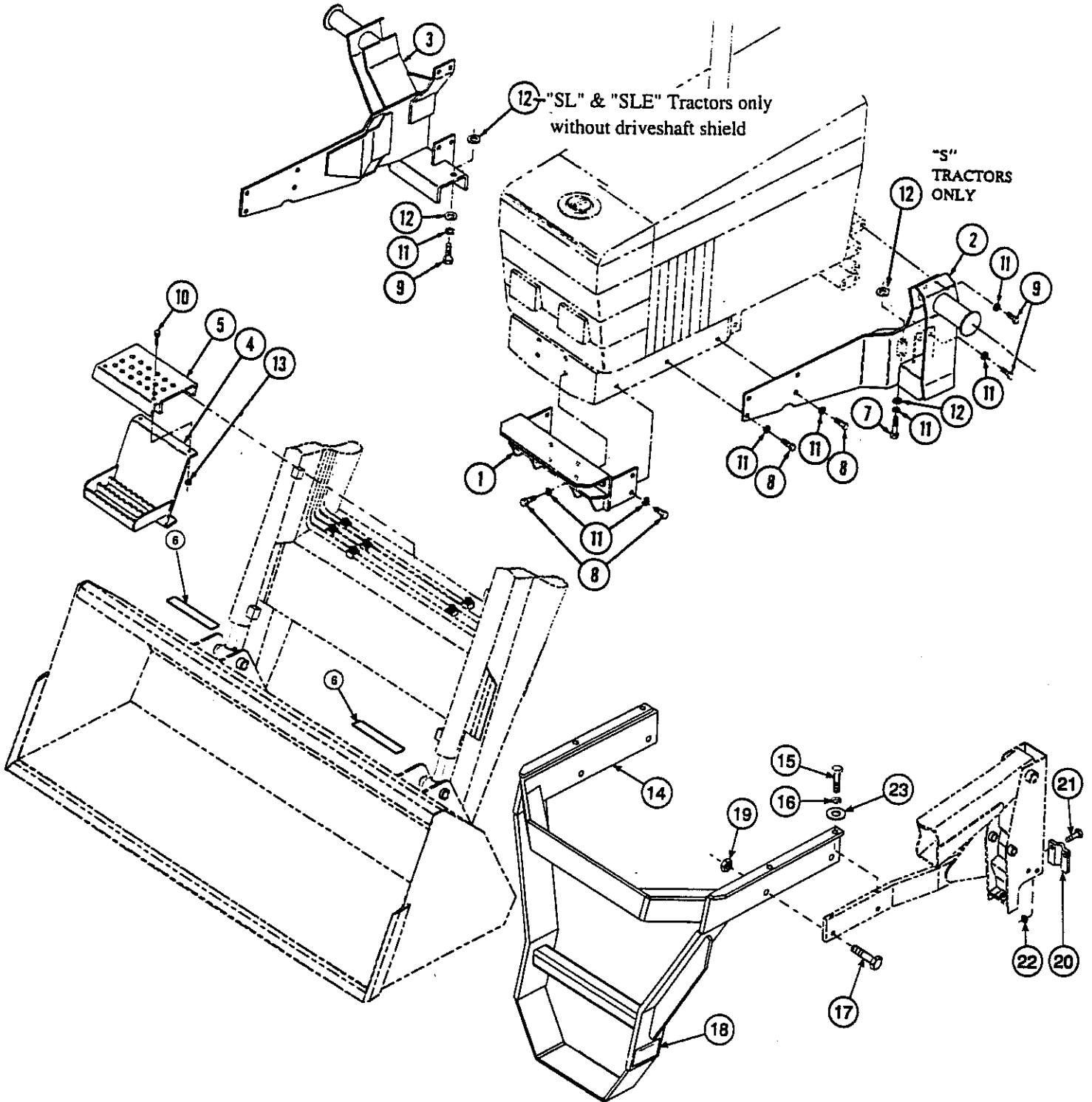
CAUTION: Spacer plates (20) keep hinge from opening too far. If spacer plates are not installed, loader may slip off mounting brackets causing injury or damage to cab. or platform.



PARTS LIST - MOUNTING KIT

ITEM	PART NO.	DESCRIPTION	QTY.
1	44244	BRACKET, Front	1
2	40627	BRACKET, Mid, Left	1
3	40626	BRACKET, Mid, Right	1
4	40688	BRACKET, Lower, Step	1
5	40660	STEP, Upper	1
6	25820-3	TREAD, Anti-Slip Surface	2
7	G271779	SCREW, Cap, 3/4-10 x 4	1
8	G271769	SCREW, Cap, 3/4-10 x 1-3/4	16
9	G271767	SCREW, Cap, 3/4-10 x 1-1/2	9
10	G180085	SCREW, Cap, 5/16-18 x 1-3/4	2
11	G131046	WASHER, Lock, 3/4	26
12	G131017	WASHER, Flat, 3/4	4
13	G9413447	NUT, Lock, 5/16-18	2
14	44245	YOKE, Front	1
15	G271723	SCREW, Cap, 5/8-11 x 2	4
16	G121574	WASHER, Lock, 5/8	4
17	G271773	SCREW, Cap, 3/4-10 x 2-1/2	4
18	39240	DECAL, Warning	2
19	G9414076	NUT, Lock, 3/4-10	4
20	44248	PLATE, Spacer	2
21	G180122	SCREW, Cap, 3/8-16 x 1	4
22	G9413534	NUT, Lock, 3/8-16	4
23	G131016	WASHER, Flat, 5/8	4

Figure 3
Installing Mounting
Brackets



INSTALLING YOKE - 7312 LOADER

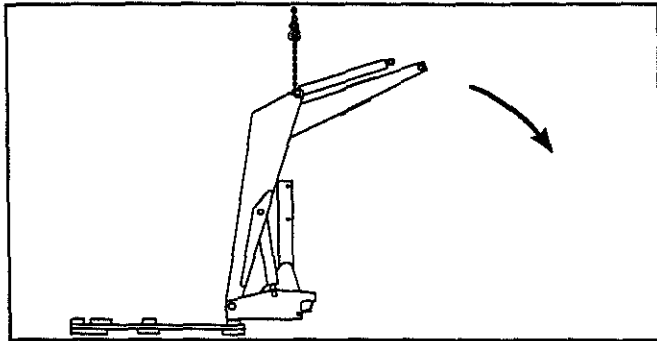
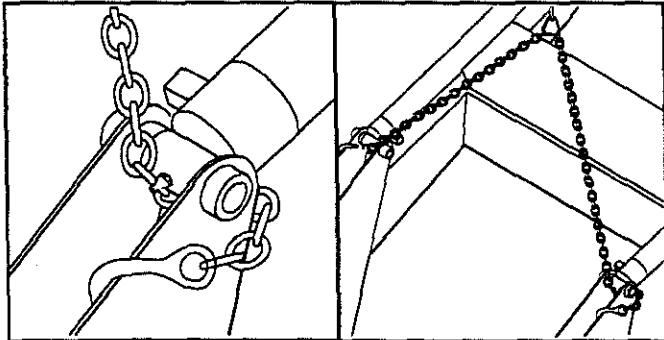


WARNING: To avoid injury during installation of quick attach loader, do not permit bystanders within ten feet of loader.

1. Loop chain under each lift cylinder and hook on loader boom arm. Using overhead hoist to support loader remove hardware securing loader to pallet. Lift loader and remove pallet.



CAUTION: Do not damage grease fitting on end of cylinder. Be sure chain does not pinch lift cylinder hose.



2. Position pallet at rear of loader to facilitate lowering. Lower loader from vertical shipping position to horizontal position leaving enough room to install yoke (scraps of cardboard may be used to protect paint). Install yoke assembly (14) using 3/4 x 2-1/2 cap screws (17) and 3/4 lock nuts (19) in side holes and 5/8-2 cap screws (15), 5/8 lock washers (16) and 5/8 flat washers (23) in top holes. Lower loader to the ground.

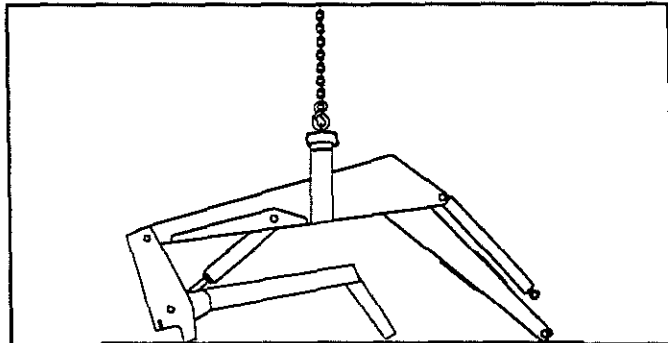
NOTE: It may be necessary to clamp sideframes together to align 5/8 inch holes in top of yoke with holes in side frames.

INSTALL HYDRAULIC KIT TO LOADER

Install hydraulics kit to loader. Refer to instruction sheet packed with kit.

INSTALLING LOADER TO MOUNTING BRACKETS

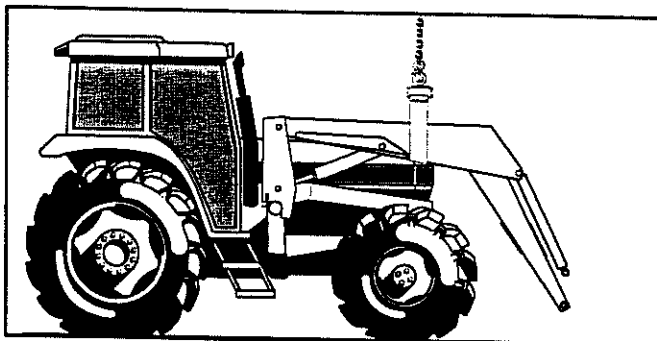
1. Back tractor directly behind loader facing in opposite direction.
2. Connect hoses from loader to tractor rear remotes.
3. Using overhead hoist to steady loader, slowly cycle lift and bucket cylinders several times to purge air from system. Retract cylinders and shut off engine. Replenish fluid in tractor hydraulic system.
4. Disconnect hoses from tractor. Turn tractor around and position behind loader. Secure tractor brakes.
5. Position a pair of nylon slings around upper boom directly in front of gussets. Using overhead hoist, lift loader off ground. Remove lock nut and washer from hinge and swing each hinge open.



6. Block hinge open using 3/4 x 3 cap screws and 3/4 flat washers. Store 3/4 flex lock nuts on extra threads of hinge bolts.

INSTALLING 7312 LOADER TO MOUNTING BRACKETS (Continued)

- Using overhead hoist, lift loader and position on midmounting tubes. Move loader back until yoke tube engages front mounting bracket and hinges can clamp around midmounting tubes.



- Clamp hinges to midmounting tubes with 3/4 x 3 cap screws, 3/4 flat washers and 3/4 flex-lock nuts.

IMPORTANT: Be sure to use flex-lock nuts to clamp hinge. Tighten flex-lock nuts against hinge securely, but not to more than 125 ft.-lb. torque.

- Remove overhead hoist.
- Connect hoses to tractor hydraulics. Refer to hydraulic kit instructions for proper connections.

- Secure hoses under cab or platform to avoid interference with tires or other moving parts.
- Adjust front wheel tread settings or steering stops, if necessary to provide a minimum 3/4 inch clearance between front tires and any part of loader with lift cylinders fully retracted and front axle fully oscillated. Refer to tractor operator's manual for adjustment procedures.

INSTALLING BUCKET OR ATTACHMENT

Refer to loader operator's manual to install bucket or optional attachment.

INSTALLING STEP

- Center lower step (4) on loader boom crossmember.
- Place upper step (5) over boom oil line tubes, aligning holes between upper and lower steps.
- Fasten steps together using 5/16 x 1-3/4 cap screws (10) and 5/16 lock nuts (13), clamping assembled step to boom crossmember.

IMPORTANT: Make sure step assembly is securely clamped to boom crossmember.

- Peel backing from anti-slip treads (6) and apply to top of bucket or bale spear.

GENERAL TORQUE SPECIFICATIONS

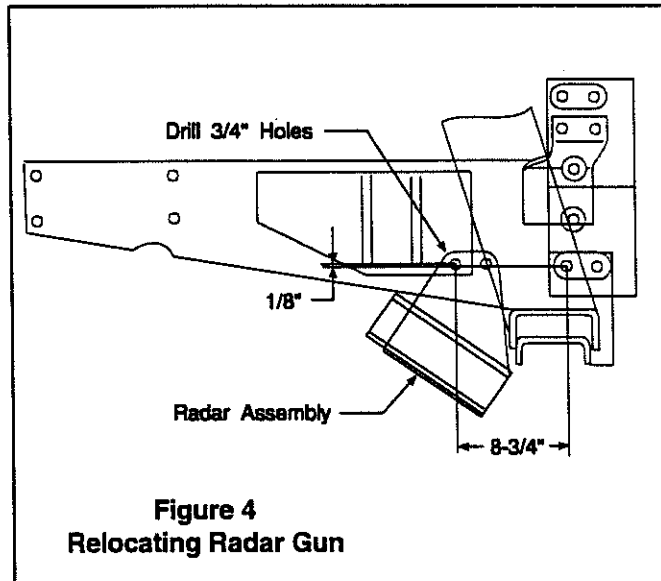
USE THE FOLLOWING TORQUES WHEN SPECIAL TORQUES ARE NOT GIVEN

AMERICAN STANDARD CAP SCREWS									METRIC CAP SCREWS								
SAE Grade	5				8				Metric Grade	8.8				10.9			
Cap Screw Size	TORQUE				TORQUE				Cap Screw Size	TORQUE				TORQUE			
INCHES	Ft - Lbs		Nm		Ft - Lbs		Nm		Millimeters	Ft - Lbs		Nm		Ft - Lbs		Nm	
	Min	Max	Min	Max	Min	Max	Min	Max		Min	Max	Min	Max	Min	Max	Min	Max
1/4-20	6.25	7.25	8.5	10	8.25	9.5	11	13	M6 x 1.00	6	8	8	11	9	11	12	15
1/4-28	8	9	11	12	10.5	12	14	16	M8 x 1.25	16	20	21.5	27	23	27	31	38.5
5/16-18	14	15	19	20	18.5	20	25	27	M10 x 1.50	29	35	39	47	42	52	57	70
5/16-24	17.5	19	23	28	23	25	31	34	M12 x 1.75	52	62	70	84	75	91	102	123
3/8-16	26	28	35	38	35	37	47.5	50	M14 x 2.00	85	103	115	139	120	146	163	198
3/8-24	31	34	42	46	41	45	55.5	61	M16 x 2.50	130	158	176	214	176	216	238	293
7/16-14	41	45	55.5	61	55	60	74.5	81	M18 x 2.50	172	210	233	284	240	294	325	398
7/16-20	51	55	69	74.5	68	75	92	102	M20 x 2.50	247	301	335	408	343	426	465	577
1/2-13	65	72	88	97.5	86	96	116	130	M22 x 2.50	332	404	450	547	472	578	639	780
1/2-20	76	84	103	114	102	112	138	152	M24 x 3.00	423	517	573	700	599	732	812	992
9/16-12	95	105	129	142	127	140	172	190	M27 x 3.00	837	779	863	1055	898	1098	1217	1488
9/16-18	111	123	150	167	148	164	200	222	M30 x 3.00	872	1066	1181	1444	1224	1496	1658	2027
5/8-11	126	139	171	188	168	185	228	251									
5/8-18	152	168	206	228	203	224	275	304									
3/4-10	238	262	322	355	318	350	431	474									
3/4-16	274	302	371	409	365	402	495	544									
7/8-9	350	386	474	523	466	515	631	698									
7/8-14	407	448	551	607	543	597	736	809									
1-8	537	592	728	802	716	790	970	1070									
1-14	670	740	908	1003	894	987	1211	1337									

NOTE: These values apply to fasteners as received from the supplier, dry or when lubricated with normal engine oil. They do not apply if special graphited or molydisulphide greases or other extreme pressure lubricants are used.

RELOCATING RADAR GUN

1. Mark a point on right midmounting bracket 8-3/4 in front of and 1/8 above lower mounting bolt (Figure 4).
2. Using radar gun bracket as a guide mark and drill two 3/4 inch holes in left midmounting bracket.
3. Using 3/4 inch hardware (not supplied) mount radar gun bracket to left midmounting bracket.



INSTALLATION INSTRUCTIONS