

Keep With Loader Operator's Manual

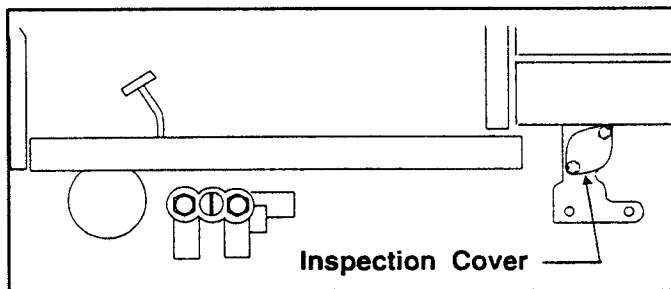
**SMC 2408
LOADER MOUNTING KIT INSTRUCTIONS
KUBOTA TRACTORS**

MODEL	2WD	4WD	LESS CAB	WITH CAB
L2900 GST		X	X	
L2900 DT		X	X	
L3300 GST		X	X	
L3300 DT		X	X	
L3010 DT		X	X	
L3010GST		X	X	

Mounting brackets can be installed using tools ordinarily available. Shut off tractor engine and engage tractor brakes during installation.

If so equipped, remove weight bracket from front of tractor.

NOTE: Leave all attaching hardware loose until mounting brackets are completely assembled to facilitate assembly and proper alignment. Tighten all hardware to torque specifications in loader operators manual.



Remove cap screw and inspection cover plate from right side of clutch housing. Leave original gasket in place. Inspection opening will be covered by loader midmounting bracket.

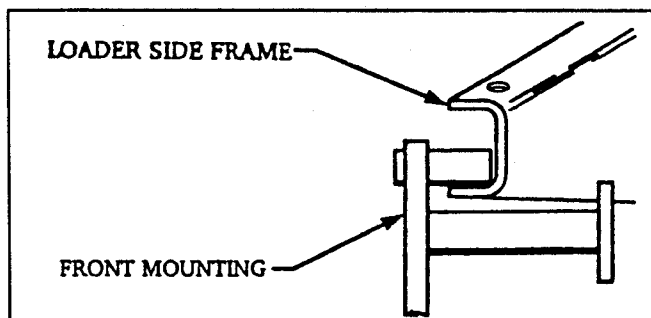
INSTALLING MOUNTING BRACKETS (Figure 1)

1. Install front mounting bracket (1) using 14MM x 35MM cap screws (5) and 9/16 lock washers (8) to tractor front casting.
2. Remove cap screws securing rear of lower part of hood on right and left sides of tractor. This portion of hood may be pulled out to allow access to upper holes in tractor transmission casting, or lower portion of hood may be removed and reinstalled after mounting brackets are in place.
3. Install right and left mid mounting brackets (3 & 4) to tractor transmission casting using 14MM x 35MM cap screws (5) and 9/16 lock washers (8) in rear holes and 12MM x 90MM cap screws (10) and 1/2 lock washers (11) in front holes. Spacer (12) is used on right side upper most forward hole where mid-mounting bolts to engine. Spacer is notched to clear an oil line on some tractors. Fasten rear braces to brackets on tractor differential using 1/2 x 1-1/2 cap screws (6), 1/2 flat washers (7) and 1/2 lock nuts (9).
4. Fasten crossplate (2) to right and left mid mounting brackets (3 & 4) using 1/2 x 1-1/2 cap screws (6) and 1/2 lock nuts (9).

INSTALLING LOADER TO MOUNTING BRACKETS

1. Position hinges inside of side frames. Fasten hinges to side frames using 5/8 x 4-1/2 carriage bolts and lock nuts (supplied with loader).
2. Attach nylon slings around loader front bumper and use an overhead hoist to raise loader off pallet and lower to a horizontal position.

NOTE: Lower lip of side frame channel must be between front mounting tubes.



3. Clamp hinges around tubes of midmounting brackets with 5/8 x 2-1/4 cap screws, flat washers and hex nuts (supplied with loader).
4. Refer to loader owners manual and plumbing kit instructions to complete loader installation.

PARTS LIST - MOUNTING KIT

ITEM	PART NO.	DESCRIPTION	QTY.
1	42294	BRACKET, Front Mounting	1
2	42270	CROSSPLATE	1
3	45295	BRACKET, Midmounting, Right	1
4	45294	BRACKET, Midmounting, Left (Not shown)	1
5	6090-132	SCREW, Cap, 14MM-1.50MM x 35MM	12
6	G180177	SCREW, Cap, 1/2-13 x 1-1/2	8
7	G120396	WASHER, Flat, 1/2	4
8	G120898	WASHER, Lock, 9/16	12
9	G9414074	NUT, Lock, 1/2-13	8
10	6090-123	SCREW, Cap, 12MM-1.25 x 90MM	4
11	G120384	WASHER, Lock, 1/2	4
12	47209	SPACER	1

NOTE: Remove cap screws securing sheet metal and pull outward to access top mounting holes.

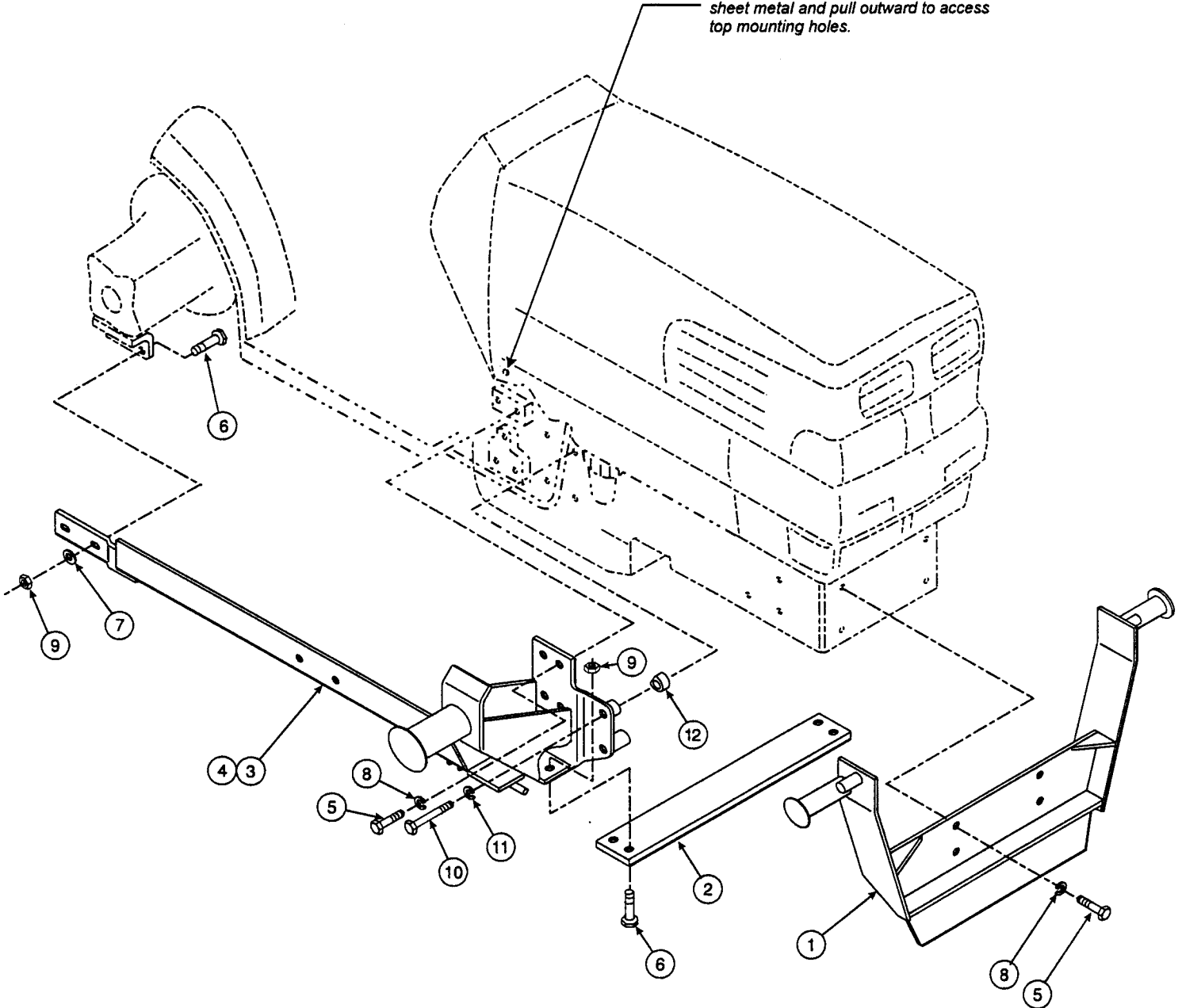


Figure 1
Mount Kit Assembly