

Keep With Operator's Manual

## BACKHOE SUBFRAME KIT 759C BACKHOE NEW HOLLAND 2120 & 3415 TRACTORS

Subframe can be installed on tractor and backhoe using tools ordinarily available. Tractor must be equipped with loader to install subframe.

Complete backhoe installation requires hose kit or pump kit. Install hydraulic kit to before mounting backhoe.

### INSTALLING SUBFRAME TO BACKHOE (Figure 3)

1. Install subframe (1) to backhoe using 3/4 x 2 cap screws (7) and 3/4 lock nuts (11)(Torque to 350 ft lbs).

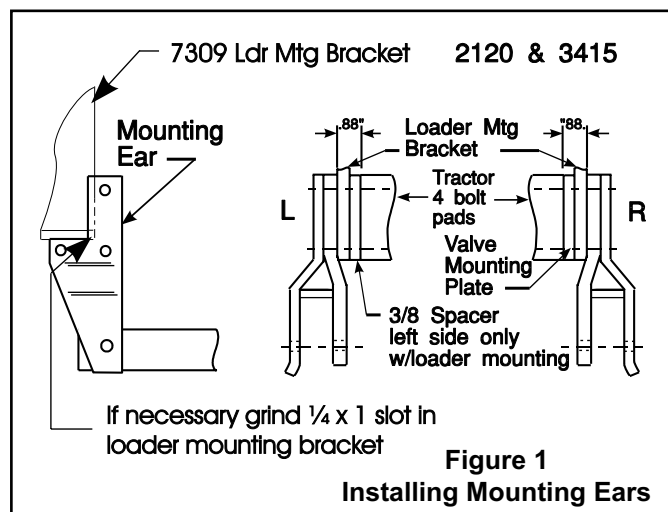
**NOTE:** *If installing pump kit and subframe; spacers (16) are required between subframe and backhoe.*

### INSTALLING MOUNTING BRACKET

1. Remove 16mm cap screws which secure hitch to underside of tractor. Hitch bracket remains on tractor.
2. Install mounting bracket (2) under hitch bracket using 16mm x 45mm cap screws (5) and (5/8) lock washers (9).
3. Remove bottom and rear cap screws which secure loader midmounting brackets to tractor.
4. Install mounting ears (14 & 17) using 16mm x 70mm cap screws (6) and 5/8 lock washers (9)(Figure 1).

**NOTE:** *Some 7309 loader mounting brackets may interfere with backhoe mounting ears. Grind a 1/4 x 1 slot into loader mounting bracket to allow backhoe mounting ear proper positioning (Figure 1).*

5. Remove PTO shield. Discard existing hardware.
6. Re-install PTO shield with rear supports (12 & 13) under PTO shield using 16mm x 40mm cap screws (15) and 5/8 lock washers (9).
7. Fasten rear supports (12 & 13) to mounting bracket (2) using 1/2 x 1-1/2 cap screws (10) and 1/2 lock nuts (8).
8. Torque all bolts. Refer to torque specifications in backhoe manual.



### REMOVING BACKHOE FROM PALLET

1. Install pump kit or hose kit. Refer to instructions packed with kit for proper installation procedure. Back tractor, parallel to subframe assembly, close to backhoe.



**CAUTION:** *Do not remove hardware which secures backhoe to pallet until bucket is installed. Backhoe may tip over causing damage or serious personal injury.*

2. Remove stabilizers from shipping position. Install stabilizers to backhoe using pins provided. Connect stabilizer cylinders to stabilizers using pins provided.
3. Connect pump or hoses to tractor. Set bucket in place below dipperstick. Remove boom lock pin and carefully extend boom cylinder (lower boom) until bucket can be connected to dipperstick.
4. Install bucket to dipperstick using pins, 3/8 x 2-1/2 cap screws and 3/8 lock nuts provided. Carefully extend bucket cylinder and connect bucket to four bar link.
5. Install seat assembly to platform using 3/8 x 1-1/4 cap screws and 3/8 lock nuts provided.



**CAUTION:** Do not fully extend boom or dipperstick until backhoe is mounted to tractor. Extending boom or dipperstick may cause backhoe to tip over resulting in damage to backhoe or serious personal injury.

**NOTE:** Remove protective coating from cylinder rods before operating backhoe controls.

- Using backhoe hydraulics carefully lower stabilizers and bucket to lift pallet off ground. Remove hardware and slide pallet out of the way. Lower backhoe to ground.

## MOUNTING BACKHOE TO TRACTOR (Figures 2 & 3)

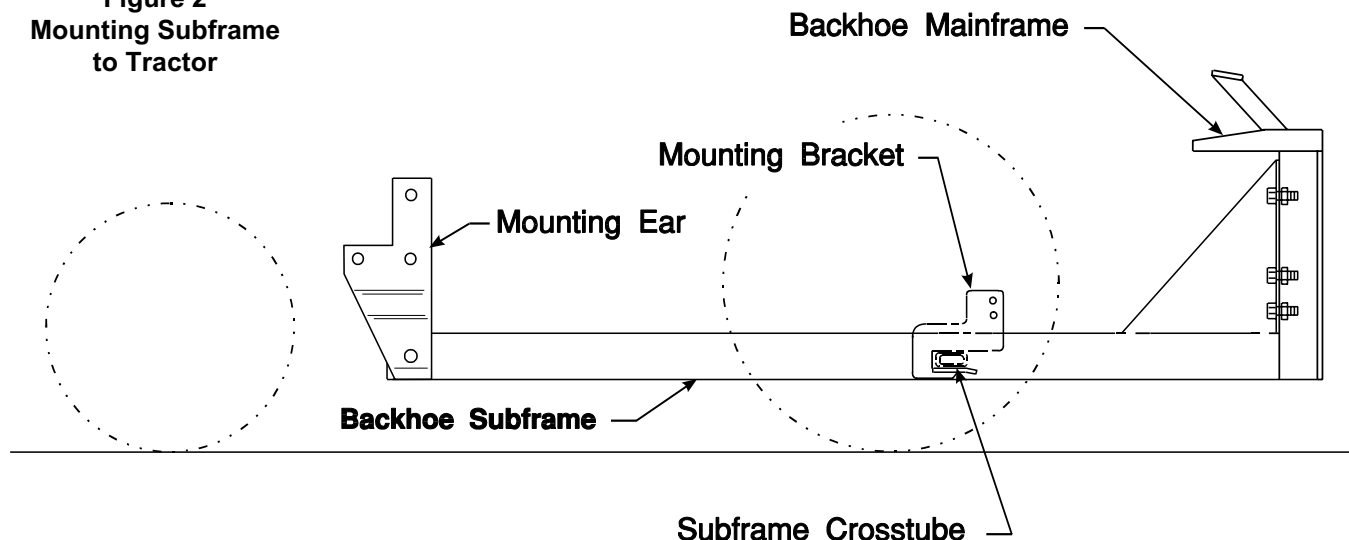
- Start engine and run at slow idle speed. Using backhoe controls, lower bucket and stabilizers to provide a base for raising subframe. Using backhoe controls, raise subframe to proper height to connect to tractor.
- Position 3-point hitch arms inside subframe.
- Slowly back tractor so crosstube engages pocket in rear mounting bracket (2) and holes in front of subframe align with front mounting ears (14). Install 3/4 pins (3) and linch pins (4).

**NOTE:** After backhoe is mounted, swing backhoe full right and full left to be sure there is not interference between swing cylinders and 3-point hitch arms.

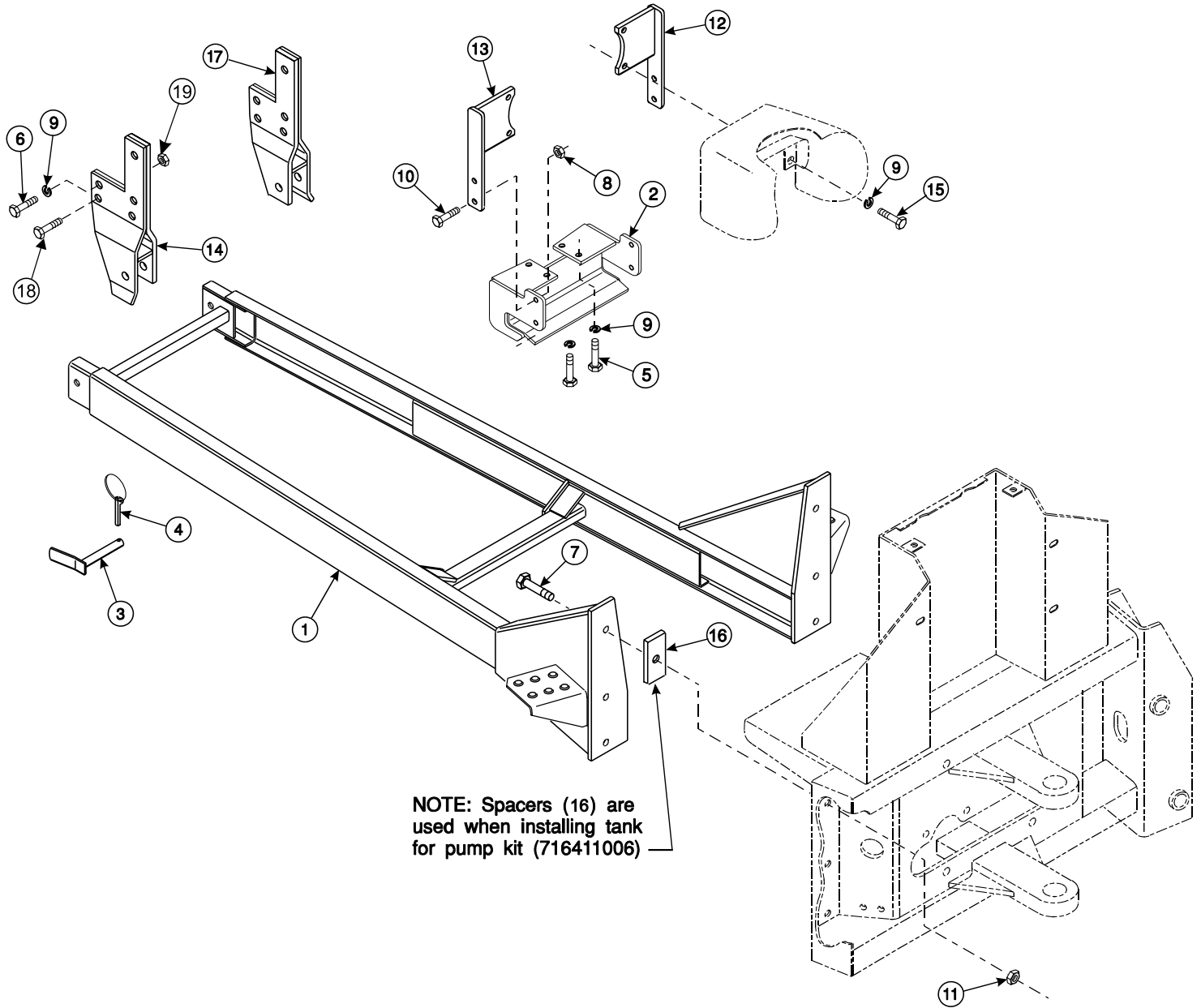
## PARTS LIST - REPAIR PARTS

ITEM	PART NO.	NH NO.	DESCRIPTION	QTY.
1	45400	SML45400	SUBFRAME	1
2	44918	SML44918	BRACKET, Mounting, Rear	1
3	44892	SML44892	PIN	2
4	44756-1	SML447561	LINCH PIN	2
5	6090-68	SML609068	SCREW, Cap, 16mm-2.0mm x 45mm	4
6	6090-110	SML6090110	SCREW, Cap, 16mm-2mm x 70mm	6
7	G271771	SMLG271771	SCREW, Cap, 3/4-10 x 2 (Grade 5)(Torque to 350 ft lbs)	6
8	G9414074	9636698	NUT, Lock, 1/2-13	4
9	G121574	84057	WASHER, Lock, 5/8	14
10	G180177	87689	SCREW, Cap, 1/2-13 x 1-1/2	4
11	G9414076	9626598	NUT, Lock, 3/4-10	6
12	44922-1	SML449221	SUPPORT, Rear, Left	1
13	44922-2	SML449222	SUPPORT, Rear, Right	1
14	48782-1	SML487821	EAR, Front Mounting, Left	1
15	6090-91	9804271	SCREW, Cap, 16mm-2.00mm x 40mm	4
16	31897	SML31897	SPACER, (used when mounting tank)	2
17	48782-2	SML487822	EAR, Front Mounting, Right	1
18	G271724	88556	SCREW, Cap, 5/8-11 x 2-1/4	4
19	G9414075	19670	NUT, Lock, 5/8-11	4

**Figure 2**  
Mounting Subframe  
to Tractor



**Figure 3**  
**Subframe Assembly**



**NOTE:** Spacers (16) are used when installing tank for pump kit (716411006)

