

Keep With Operator's Manual

BACKHOE SUBFRAME KIT 910GH & 756C BACKHOE NEW HOLLAND 1120, 1215, 1220, TC18, TC21, TC21D & TC24D TRACTORS

If tractor is equipped with 702C dozer, optional mounting bracket Ref. 716566016 (2-7043) or 716963006 (2-7142) must be ordered to complete subframe installation.

Reference to right, left, front and back refers to operator seated in tractor seat in normal operating position.

INSTALLING MOUNTING BRACKETS (Figure 2)

1. Remove 3-point hitch lower adjusters and brackets bolted to rear end casting. Save hardware for installing rear mounting brackets.
2. Install rear mounting brackets (2 & 3) to rear end casting using hardware previously removed.

IMPORTANT: If tractor is equipped with turf tires, change wheels from left to right sides and reverse wheels to provide clearance for subframe.

INSTALLING SUBFRAME (Figure 3)

1. Install subframe (1) to backhoe mainframe using 7/8 x 4 cap screws (10), 7/8 lock washers (12) and 7/8 hex nuts (11) in rear holes and 3/4 x 3-1/2 cap screws (9) and 3/4 lock nuts (8) in front holes.

IMPORTANT: Torque 3/4" hardware to 238-262 ft.-lbs. (322-355 Nm). Torque 7/8" hardware to 350-386 ft.-lbs. (474-523 Nm).

2. Install mounting braces (4) to subframe and backhoe mainframe using 3/4 x 2 cap screws (7) and 3/4 lock nuts (8).

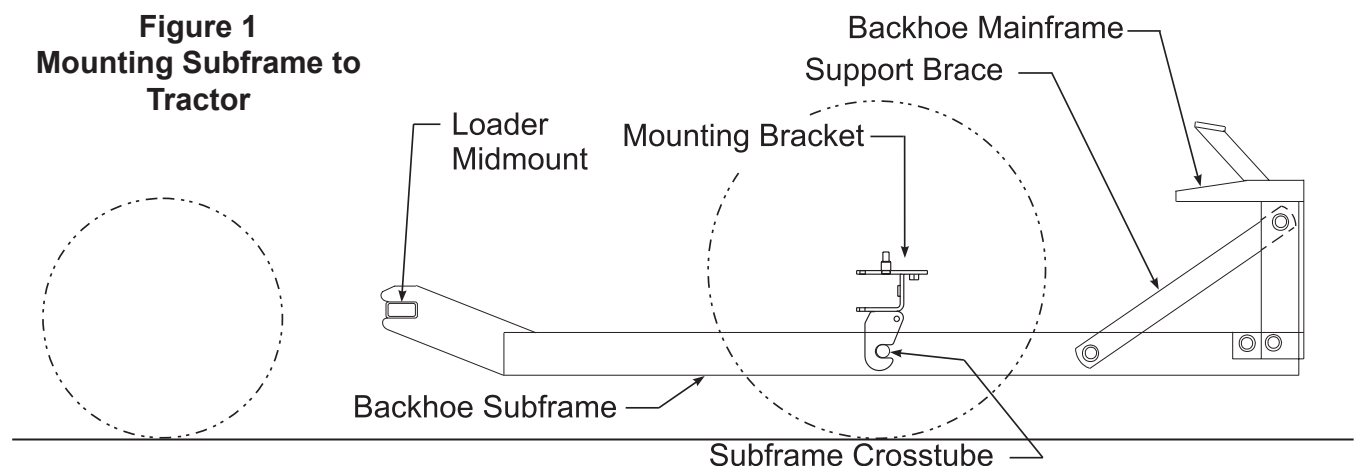
910GH ONLY: Use support braces 55882 (13) & 55883 (14).

IMPORTANT: Torque 3/4" hardware to 238-262 ft.-lbs. (322-355 Nm).

MOUNTING BACKHOE TO TRACTOR (Figure 1)

1. Back tractor over subframe close enough to connect backhoe hydraulic system. Refer to instruction sheet packed with hydraulic kit to connect hydraulics.
2. Using backhoe hydraulic controls, extend stabilizer, dipper and boom cylinders until rear mounting tube is level with rear mounting bracket and front of subframe level with loader mid mounting tube (Figure 1).
3. Slowly back tractor until subframe is connected to tractor.
4. Secure subframe using clevis pins (5) and hair pin clips (6) (Figure 2).

Figure 1
Mounting Subframe to Tractor



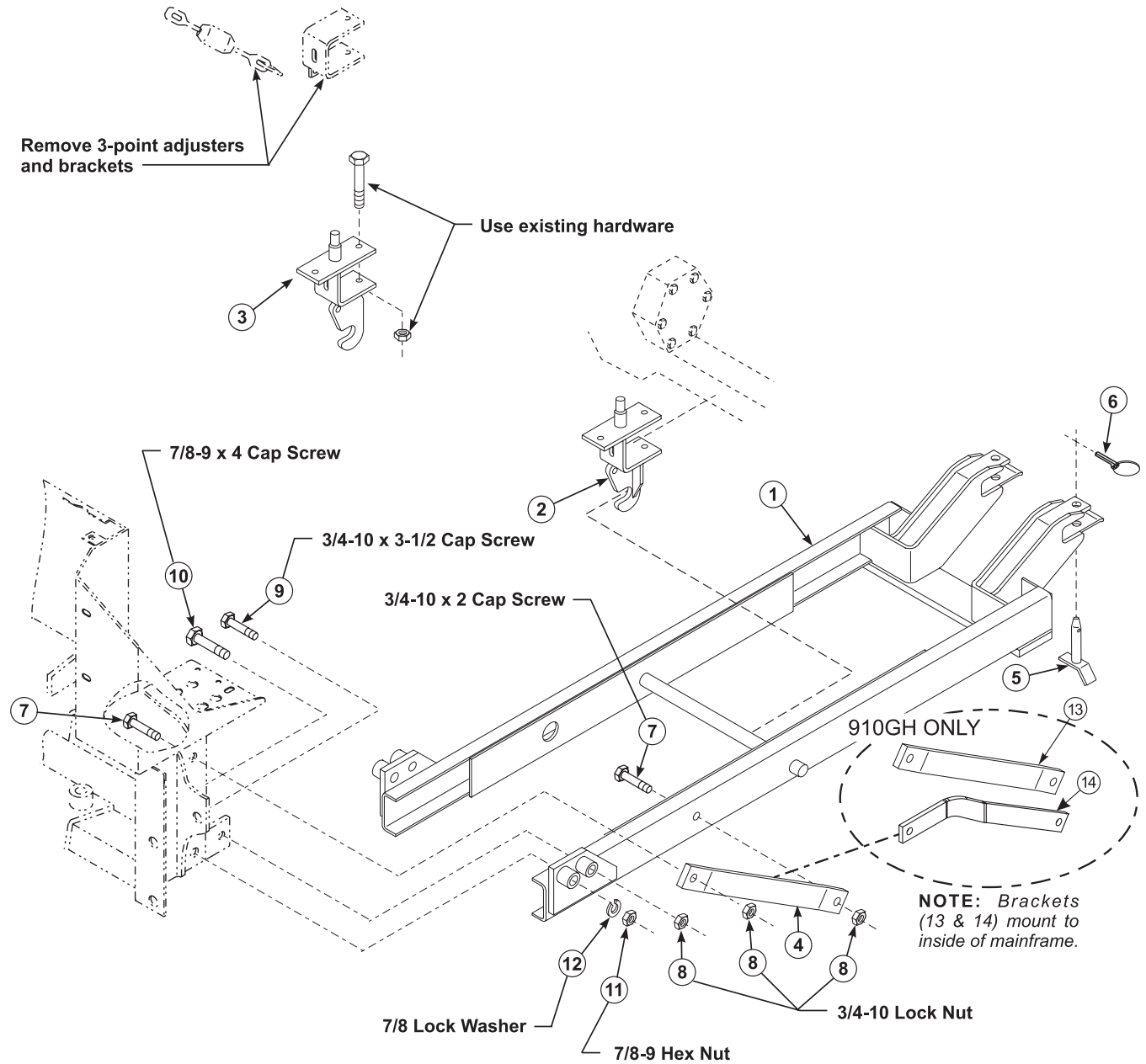
2-6478

2-7033

PARTS LIST – SUBFRAME MOUNTING KIT

Item	Part No.	Description	Qty.
1	46010	SUBFRAME	1
2	46458-2	REAR AXLE BRACKET, Right	1
3	46458-1	REAR AXLE BRACKET, Left	1
4	44836	BRACE, Rear	2
5	44892	CLEVIS PIN, 3/4 x 3	2
6	44756-1	LINCH PIN	2
7	G223527	SCREW, Cap, 3/4-10 x 2 (Grade 8) (Torque to 350 ft lbs)	4
8	G9414076	NUT, Lock, 3/4-10	6
9	G271777	SCREW, Cap, 3/4-10 x 3-1/2	2
10	G271823	SCREW, Cap, 7/8-9 x 4	2
11	G220087	NUT, Hex, 7/8-9	2
12	G131047	WASHER, Lock, 7/8	2
13	55882	SUPPORT BRACE, Left	1
14	55883	SUPPORT BRACE, Right	1

Figure 3
Subframe Mounting Kit



2-6478

2-7033

GENERAL TORQUE SPECIFICATIONS

USE THE FOLLOWING TORQUES WHEN SPECIAL TORQUES ARE NOT GIVEN

Standard American and Metric Cap Screws

AMERICAN STANDARD CAP SCREWS									METRIC CAP SCREWS								
SAE Grade	5				8				Metric Class	8.8				10.9			
Typ. Head Markings									Typ. Head Markings								
Cap Screw	TORQUE				TORQUE				Cap Screw	TORQUE				TORQUE			
Size	FT-LBS		N-m		FT-LBS		N-m		Size	FT-LBS		N-m		FT-LBS		N-m	
Inches	MIN	MAX	MIN	MAX	MIN	MAX	MIN	MAX	Millimeters	MIN	MAX	MIN	MAX	MIN	MAX	MIN	MAX
1/4 - 20	6.25	7.25	8.5	10	8.25	9.5	11	13	M6 x 1.00	6	8	8	11	9	11	12	15
1/4 - 28	8	9	11	12	10.5	12	14	16	M8 x 1.25	16	20	21.5	27	23	27	31	36.5
5/16 - 18	14	15	19	20	18.5	20	25	27	M10 x 1.50	29	35	39	47	42	52	57	70
5/16 - 24	17.5	19	23	26	23	25	31	34	M12 x 1.75	52	62	70	84	75	91	102	123
3/8 - 16	26	28	35	38	35	37	47.5	50	M14 x 2.00	85	103	115	139	120	146	163	198
3/8 - 24	31	34	42	46	41	45	55.5	61	M16 x 2.50	130	158	176	214	176	216	238	293
7/16 - 14	41	45	55.5	61	55	60	74.5	81	M18 x 2.50	172	210	233	284	240	294	325	398
7/16 - 20	51	55	69	74.5	68	75	92	102	M20 x 2.50	247	301	335	408	343	426	465	577
1/2 - 13	65	72	88	97.5	86	96	116	130	M22 x 2.50	332	404	450	547	472	576	639	780
1/2 - 20	76	84	103	114	102	112	138	152	M24 x 3.00	423	517	573	700	599	732	812	992
9/16 - 12	95	105	129	142	127	140	172	190	M27 x 3.00	637	779	863	1055	898	1098	1217	1488
9/16 - 18	111	123	150	167	148	164	200	222	M30 x 3.00	872	1066	1181	1444	1224	1496	1658	2027
5/8 - 11	126	139	171	188	168	185	228	251	NOTE: These values apply to fasteners as received from supplier, dry or when lubricated with normal engine oil. They do not apply if special graphite or moly sulphide greases or other extreme lubricants are used.								
5/8 - 18	152	168	206	228	203	224	275	304									
3/4 - 10	238	262	322	355	318	350	431	474									
3/4 - 16	274	305	371	409	365	402	495	544									
7/8 - 9	350	386	474	523	466	515	631	698									
7/8 - 14	407	448	551	607	543	597	736	809									
1 - 8	537	592	728	802	716	790	970	1070									
1 - 14	670	740	908	1003	894	987	1211	1337									

37° JIC Fittings

Size	Thread Size	Assembly Torque		Tube Connection F. F. F. T.	Swivel Nut or Hose Connection F. F. F. T.
		in.·lb.	ft.·lb.		
-4	7/16 - 20	140 ± 10	12 ± 1	2	2
-5	1/2 - 20	180 ± 15	15 ± 1	2	2
-6	9/16 - 18	250 ± 15	21 ± 1	1 1/2	1 1/4
-8	3/4 - 16	550 ± 25	45 ± 5	1 1/2	1
-12	1 1/16 - 12	1000 ± 50	85 ± 5	1 1/4	1
-16	1 5/16 - 12	1450 ± 50	120 ± 5	1	1
-20	1 5/8 - 12	2000 ± 100	170 ± 10	1	1
-24	1 7/8 - 12	2400 ± 150	200 ± 15	1	1
-32	2 1/2 - 12	3200 ± 200	270 ± 20	1	1

O-Ring Face Seal Tube/ Hose Swivel Nut

Metric Tube O.D. (mm)	Dash Size	Thread Size (in.)	Swivel Nut Hex Size (in.)	Swivel Nut Torque	
				N-m	lb·ft
5	-3	--	--	--	--
6	-4	9/16 - 18	11/16	16	12
8	-5	--	--	--	--
10	-6	11/16 - 16	13/16	24	18
12	-8	13/16 - 16	15/16	50	37
16	-10	1 - 14	1-1/8	69	51
20	-12	1-3/16 - 12	1-3/8	102	75
22	-14	1-3/16 - 12	--	102	75
25	-16	1-7/16 - 12	1-5/8	142	105
32	-20	1-11/16 - 12	1-7/8	190	140
38	-24	2 - 12	2-1/4	217	160
50.8	-32	--	--	--	--

SAE O-Ring Fittings

Size	Swivel Nut or Hose	Assembly Torque		F. F. F. T.
		in.·lb.	ft.·lb.	
2	5/16 - 24	90 ± 5	7.5 ± 0.5	1 ± .25
3	3/8 - 24	170 ± 10	14 ± 1	1 ± .25
4	7/16 - 20	220 ± 15	18 ± 1	1 ± .25
5	1/2 - 20	260 ± 15	22 ± 1	1 ± .25
6	9/16 - 18	320 ± 20	27 ± 2	1.5 ± .25
8	3/4 - 16	570 ± 25	48 ± 2	1.5 ± .25
10	7/8 - 14	1060 ± 50	90 ± 5	1.5 ± .25
12	1 1/16 - 12	1300 ± 50	110 ± 5	1.5 ± .25
14	1 3/16 - 12	1750 ± 75	145 ± 6	1.5 ± .25
16	1 5/16 - 12	1920 ± 125	160 ± 6	1.5 ± .25
20	1 5/8 - 12	2700 ± 150	225 ± 12	1.5 ± .25
24	1 7/8 - 12	3000 ± 150	250 ± 12	1.5 ± .25
32	2 1/2 - 12	3900 ± 200	325 ± 15	1.5 ± .25

INSTALLATION INSTRUCTIONS