

ASSEMBLY MANUAL

Keep With Operator's Manual

60" QUICK ATTACH 4 IN 1 BUCKET 2408, 2408TL & 2409 LOADERS

Bucket and plumbing are factory assembled. Remove corrugated plastic tubing from cylinder rods.

NOTE: *Frequent lubrication of grease fittings at each end of cylinders and torque tube bushings (with multi purpose grease) will greatly increase life of product.*

ATTACHING BUCKET TO LOADER



WARNING: *To avoid injury during installation of bucket attachment do not allow bystanders within 10 feet of loader and bucket.*

1. Locate tractor and bucket on level ground. Lower boom to rest on ground. Extend bucket cylinders slightly, while raising boom to provide three to five inches of ground clearance, drive tractor ahead slowly toward bucket, aligning loader quick attach device with bucket.
2. While driving tractor ahead slowly to maintain contact with bucket, activate lift cylinders to raise loader until quick attach engages under bucket lip.
3. Activate bucket cylinders to retract, continuing to roll back completely.
4. Place tractor in neutral, set parking brake, shut off tractor. Move latch pin handles to latch (down) position (refer to figure A).
5. Start tractor, activate lift cylinders to raise bucket one or two feet off ground and extend bucket cylinders to tilt bucket at slight downward angle, so quick attachment latch pins are visible. Visually inspect the attachment mechanism to verify pins are engaged through latch plate on back of bucket.

PLUMBING BUCKET TO LOADER HYDRAULICS (Figure 1)

1. Uncoil hoses assembled to bucket and connect quick couplers to loader auxiliary couplers.
2. Start tractor engine and slowly cycle bucket cylinders several times to purge system of air, check for leaks and proper hydraulic connection.



WARNING: *Escaping fluid under pressure can penetrate skin causing serious personal injury.*

- *Do not use your hands to check for leaks. Use a piece of cardboard or paper. Always wear eye protection when searching for leaks.*
- *Stop engine and relieve pressure before connecting and disconnecting lines.*
- *Tighten all connections before starting engine or pressurizing lines.*

If fluid is injected into skin, obtain medical attention immediately or gangrene may result.

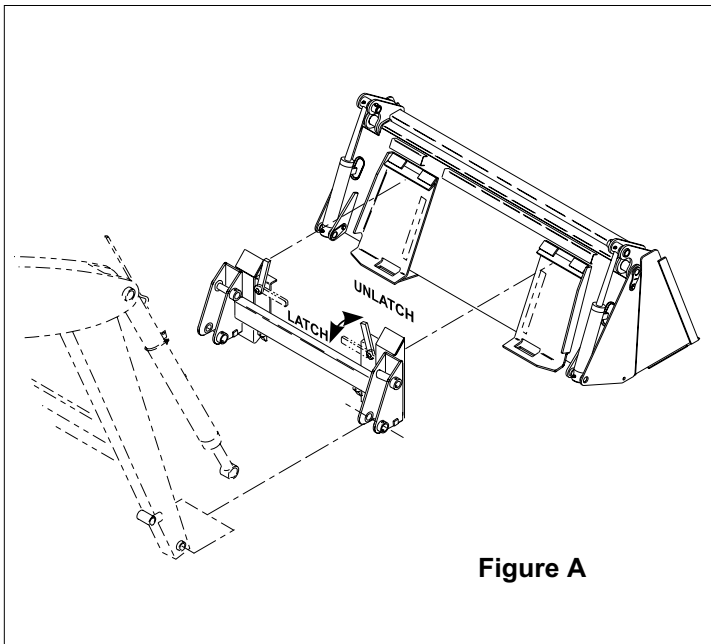


Figure A

DETACHING BUCKET FROM LOADER

1. Locate tractor and loader on level ground.
2. Lower boom arms until bucket is about one to two inches above ground and level.
3. Place tractor in neutral, set parking brake, shut off tractor engine and disengage quick attach device latch pins by moving handles to unlatch position (refer to Figure A).
4. Start tractor engine, release brake and extend bucket cylinders while slowly backing tractor away from bucket, until quick attach disengages from bucket.

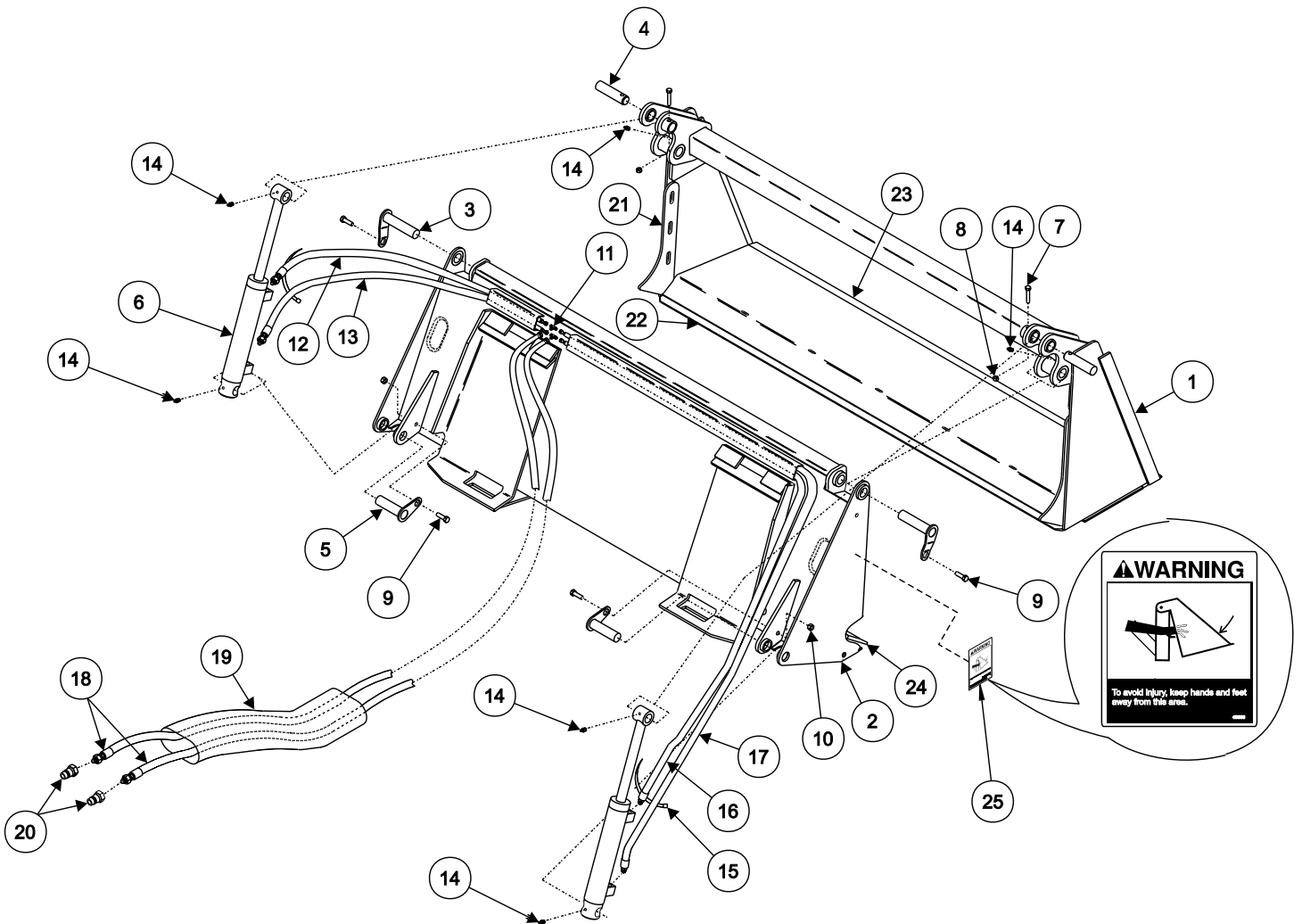
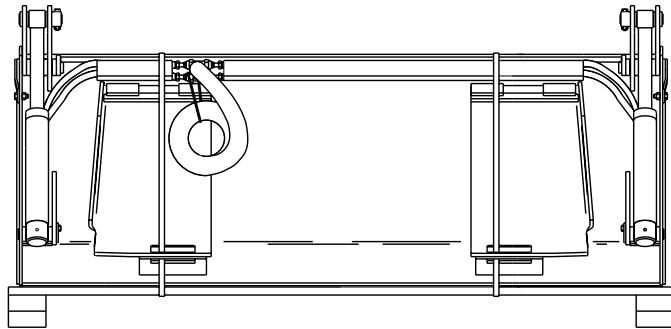


CAUTION: Do not extend bucket cylinders too far, otherwise, quick attach levers might contact bucket and become damaged.

PARTS LIST - 60" 4 IN 1 BUCKET

Item	Part No.	Description	Qty.
1	46441	BUCKET ASSEMBLY, Front, 60"	1
2	49212	BUCKET ASSEMBLY, Rear, 60"	1
3	46472-1	PIN ASSEMBLY, 1" x 4.50"	2
4	46613-1	PIN 1" x 4"	2
5	47047	PIN ASSEMBLY, 1" x 3.62"	2
6	46364	CYLINDER ASSEMBLY (See page 5 for parts breakdown)	2
7	41838-4	SCREW, Cap, 5/16-18 x 1.75 Grade 5	2
8	41840-2	NUT, Lock, 5/16-18	2
9	47046	BOLT, Shoulder, 3/8-16 x 1	4
10	41840-3	NUT, Lock, 3/8-16	4
11	36665-1	FITTING, Union Tee, 9/16-18 SAE	2
12	38290-12	HOSE, .250 x 19	1
13	38290-13	HOSE, .250 x 27	1
14	6075-4	FITTING, Grease, 1/4-28 straight	6
15	8137-1	STRAP, Adjustable, 11"	2
16	38290-14	HOSE, .250 x 47	1
17	38290-15	HOSE, .250 x 55	1
18	36251-8	HOSE, .250 x 38	2
19	34853-16	SLEEVE, Nylon, 1.59 ID x 35"	1
20	6137-4	COUPLING, Male	2
21	46443	GRABBER, Stiffener	2
22	40218-3	EDGE, Cutting Jaw	1
23	22541-16	EDGE, Cutting	1
24	22541-17	EDGE, Cutting	1
25	46686	DECAL, Warning	2

Figure 1
60" 4 IN 1
Bucket



2-6708

CYLINDER SERVICE (Figure 2)

CYLINDER DISASSEMBLY

1. Hold cylinder tube (13) stationary and rotate cylinder head (5) so beveled end of wire ring (14) will thread out through slot (Figure 2A).
2. Pull shaft (1) with all assembled parts out of cylinder tube (13).

NOTE: *Resistance will be felt until seals (7) and (10) slide over wire retaining ring groove. O-Ring (7) and piston seal (10) will be damaged when cylinder is disassembled and must be replaced.*

3. Remove locknut (12) from end of shaft (1). Slide piston (8) and cylinder head (5) off of shaft (1).
4. Remove piston wear ring (11), piston seal (10) and o-ring (9) from piston (8).
5. Remove wiper seal (2), U-Cup seal (3) and wear ring (4) from inside of cylinder head (5) and o-ring (7) and backup washer (6) from groove on outside of head.
6. Clean all parts, including cylinder tube, in a suitable cleaning solvent, then use air pressure to blow any dirt or excess solvent from all parts.
7. Examine all parts for wear or damage and replace, if necessary.

CYLINDER ASSEMBLY

NOTE: *Be careful not to damage seals, packings and o-rings on the edges or holes in cylinder tube. Inspect cylinder tube and remove burrs and sharp edges if necessary before reassembling.*

1. Install wear ring (4) in groove inside cylinder head (5).

2. Place new U-Cup seal (3) and wiper seal (2) inside cylinder head (5).

NOTE: *Lips on U-Cup seal must face toward inside of cylinder (See figure 2). For easier installation, place U-Cup seal (3) in 120° F water to make seal more flexible.*

3. Place backup washer (6) and o-ring (7) in grooves on outside of head (5). Make sure backup washer is placed in groove toward rod end of cylinder as shown.
4. Remove sharp edges on outer edge of threaded end of shaft (1) (See figure 2). Lubricate wiper seal (2), U-Cup seal (3) and wear ring (4) inside head (5) and carefully slide head onto shaft.
5. Place o-ring (9), piston seal (10) and piston wear ring (11) in grooves on outside of piston (8).

NOTE: *For easier installation, place piston seal (10) in 120° F water to make seal more flexible.*

6. Slide piston (8) onto shaft (1). Install 7/8 locknut (12) and tighten to 150 ft. lbs. of torque.
7. Lubricate piston wear ring (11), piston seal (10) and o-ring (9) on piston (8); backup washer (6) and o-ring (7) on head (5) and inside of cylinder tube (13) then carefully slide piston and head into cylinder tube.
8. Insert wire retaining ring (14) into slot in cylinder tube (13) and turn cylinder head while applying pressure to wire ring to thread it into groove until hook on end of wire ring catches against end of slotted hole in cylinder tube.

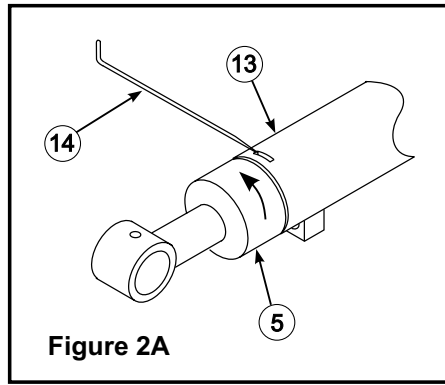
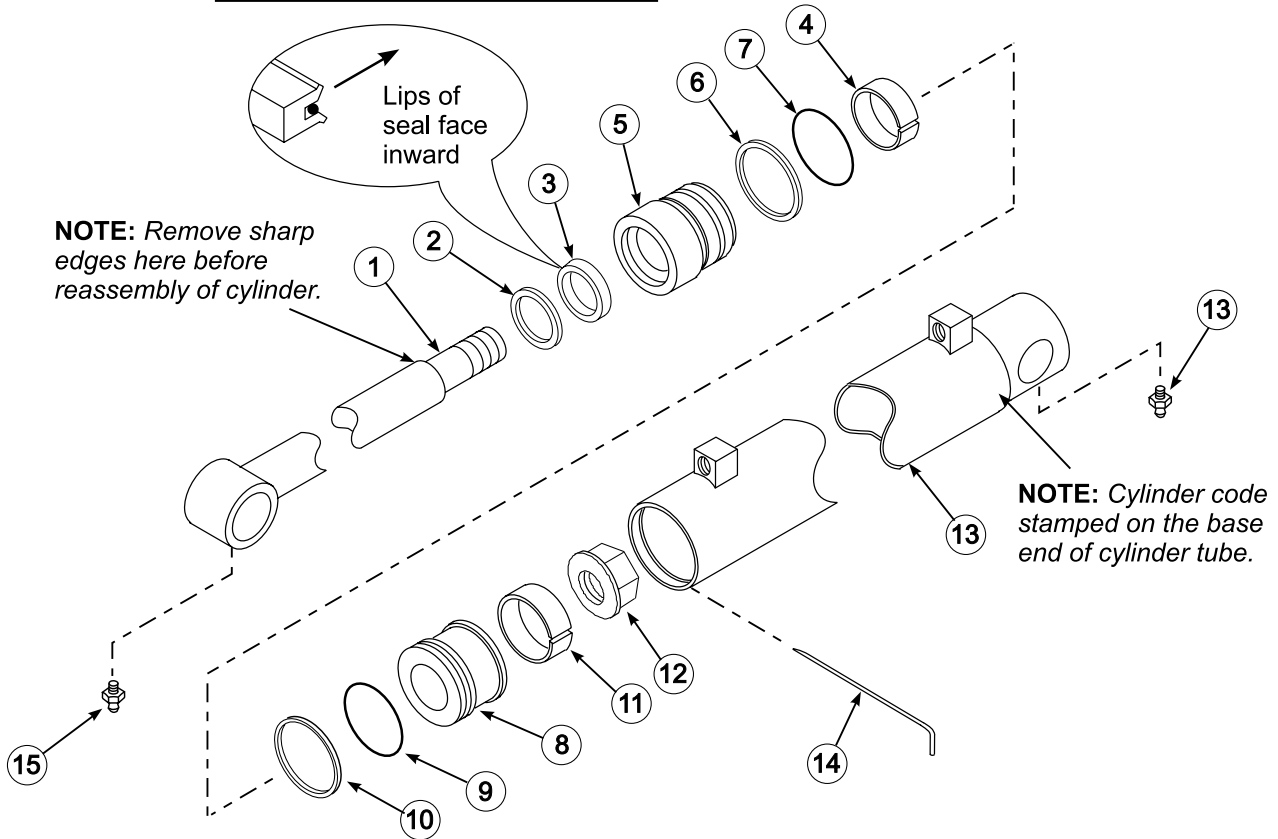


Figure 2



PARTS LIST - CYLINDER (46364) (LE) 1.75"

Item	Part No.	Description	Qty.
1	46475	ROD, Weldment	1
2	*	SEAL, Wiper	1
3	*	SEAL, U-Cup	1
4	*	RING, Wear	1
5	44027	HEAD, Cylinder	1
6	*	WASHER, Back-up	1
7	*	O-RING	1
8	46479	PISTON, Cylinder	1
9	*	O-RING	1
10	*	SEAL, Piston	1
11	*	RING, Wear	1
12	32903-1	NUT, Flange Lock, 3/4-10	1
13	46478	TUBE, Cylinder Assembly	1
14	*	RETAINER, Wire	1
15	6075-4	FITTING, Grease	2
*	46525	Repair Kit, Includes (*) Items	1

INSTALLATION INSTRUCTIONS