

Keep with Operators Manual

LOADER MOUNTING KIT

CASE IH MX100, MX110, MX120, MX135, MX150 AND MX170 2WD AND
FWA AND McCORMICK MTX110, MTX125, MTX140, MTX155 AND
MTX175 2WD AND FWA SERIES TRACTORS

TRACTOR & LOADER GENERAL INFORMATION

Mounting kit can be installed using tools ordinarily available.

Shut off engine and engage brakes during installation. If tractor is equipped with front weights, they must be removed. The weight bracket can remain.

Tractors equipped with cab, mounted loader may obstruct beam of cab-mounted headlights located near hand rails. Use Light Relocation Bracket provided in mounting kit.

If tractor is equipped with front fenders, they must be removed. Fender brackets must be set to widest position or removed.

Check front tire clearances once loader is installed and adjust tire track width as necessary.

FWD tractors are equipped with factory front axle oscillation stops and must be used with loader installation.

Tractor steering stops may have to be adjusted to provide clearance between front tire, tractor hood and loader on full left and right turn with front axle fully oscillated. Be sure lift cylinders are fully retracted when checking tire clearances. Refer to tractor operator's manual for steering stop adjustment.

PREPARING TRACTOR

Run 20mm-2.50 thread tap into tractor front casting and transmission housing bolt holes which are used for loader mountings.

INSTALLING MID-MOUNTS (Figure 2)

NOTE: Loosely install hardware (unless noted differently in instructions) until mounting kit is completely assembled to facilitate assembly and proper alignment. All mounting hardware will be torqued later.



WARNING: Front window of cab is very vulnerable to breakage when installing mid-mount assemblies. Steps should be taken to protect glass when attaching mid-mounts.

INSTALLING LEFT MID-MOUNT (Figure 2)

1. Raise left mid mount (1) with overhead hoist, and loosely attach to transmission housing and front casting with eight 20mm x 70mm cap screws (4), four 3/4 flat washer (8) on slotted holes and eight 20mm lock washers (5). To assist with positioning mount, start cap screw (4) in lower rear hole on tractor. Mounting can be positioned on cap screw (4) and rotated into position.

INSTALLING RIGHT MID-MOUNT (Figure 2)

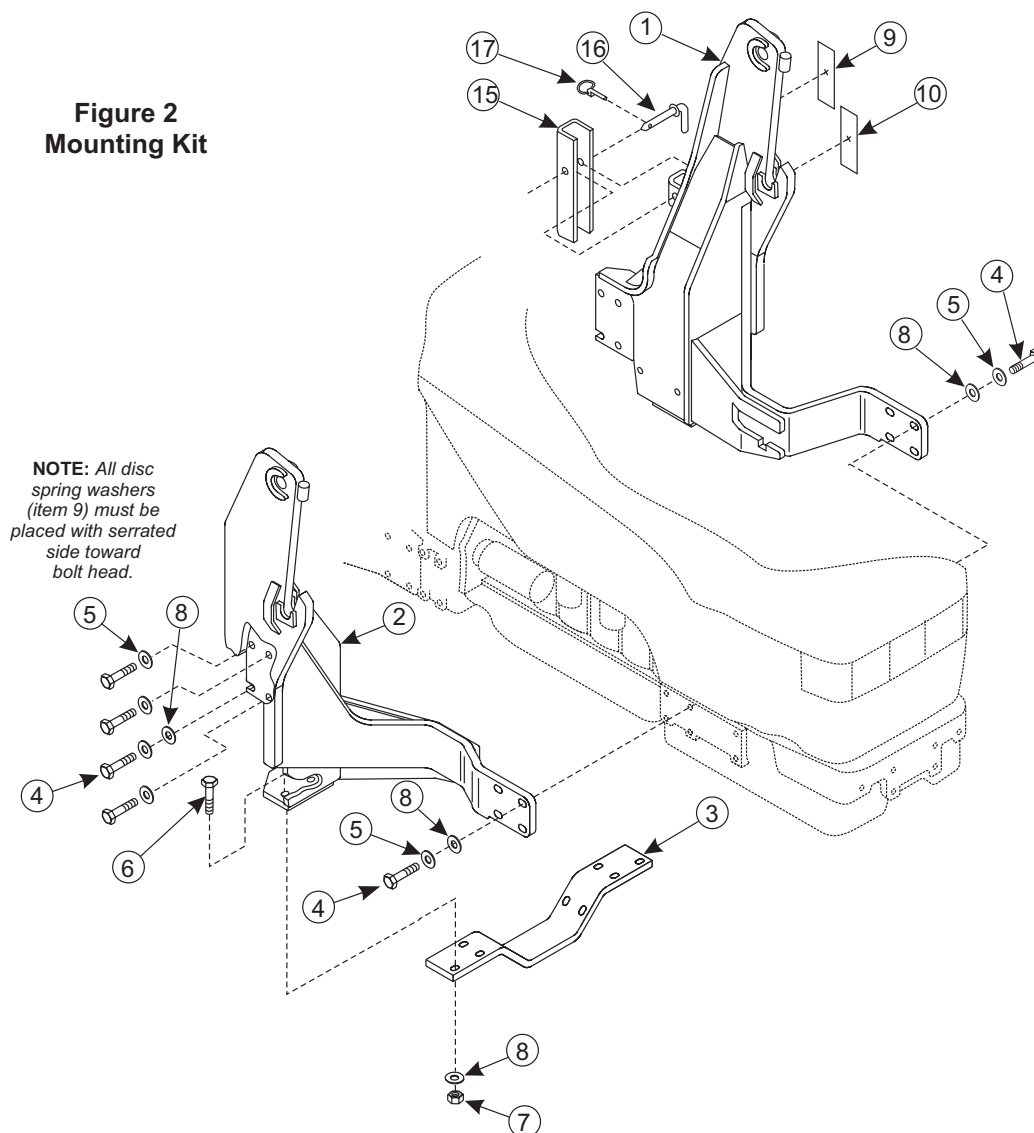
1. Raise right mid mount (2) with overhead hoist, and loosely attach to transmission housing and front casting with eight 20mm x 70mm cap screws (4), four 3/4 flat washer (8) on slotted holes and eight 20mm lock washers (5). To assist with positioning mount, start cap screw (4) in lower rear hole on tractor. Mounting can be positioned on cap screw (4) and rotated into position.

INSTALLING CROSSTIE (Figure 2)

1. Raise crosstie (3) and attach to left and right mid mount assemblies (1 & 2) with four 3/4 x 2-3/4 cap screws (6) and 3/4 lock nuts (7), as illustrated in figure 2.
2. Tighten and torque hardware to specifications found on torque chart on page 5.

NOTE: Mounting hardware must be retorqued after initial 10 hours use and after every additional 50 hours.

Figure 2
Mounting Kit



PARTS LIST - 7214 MOUNTING KIT (Figure 2)

ITEM	SMC NO.	DESCRIPTION	QTY.
1	49134	MID MOUNT ASSEMBLY with DECALS, Left	1
2	48918	MID MOUNT ASSEMBLY, Right	1
3	48911	CROSSTIE	1
4	49040-3	SCREW, Cap, 20mm-2.5 x 70mm	16
5	G11500166	WASHER, Lock, 20mm	16
6	G271774	SCREW, Cap, 3/4-10 x 2-3/4	4
7	G9414076	NUT, Lock, 3/4-10	4
8	G131000	WASHER, Flat, 3/4	8
9	48921	DECAL, Danger (Factory Installed)	1
10	47730	DECAL, Warning (Factory Installed)	1
11	48924	BRACKET, LIGHT RELOCATION	2
12	G180083	SCREW, CAP, 5/16-18 X 1-1/2	2
13	G9413447	NUT, LOCK, 5/16-18	4
14	48317	CYLINDER PROP (Factory Installed on left mid mount assembly)	1
15	48316	PIN ASSEMBLY (Factory Installed on left mid mount assembly)	1
16	44756-2	LINCH PIN (Factory Installed on left mid mount assembly)	1

2-6797

IMOUNTING 7214 LOADER (Figures 6-10)

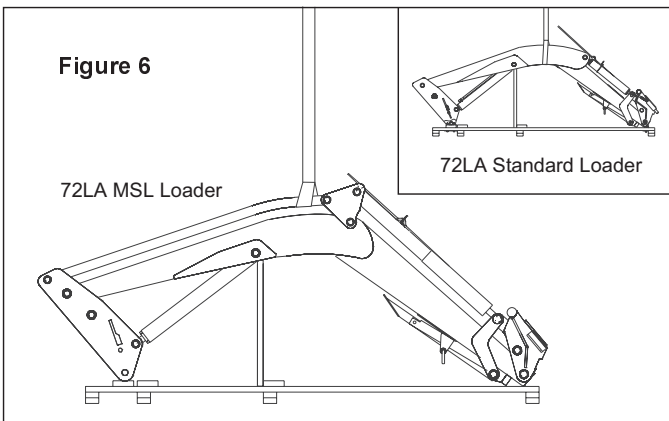


WARNING: To avoid injury during installation of quick attach loader, do not permit bystanders within ten feet of loader.



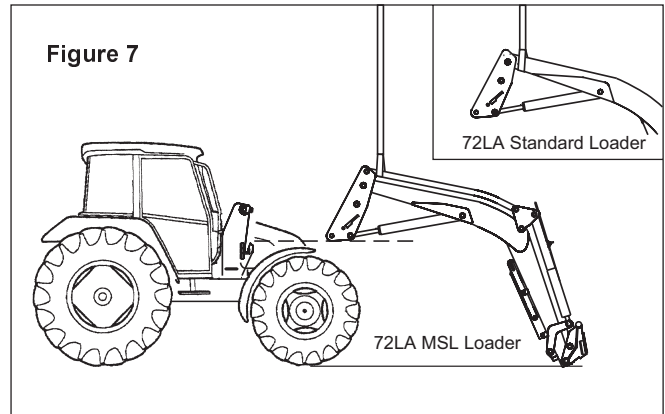
WARNING: To avoid injury during installation of quick attach loader, an overhead hoist must be used for initial mounting. Parking stands are not operational without the attachment mounted.

1. Using overhead hoist with nylon sling, lift loader at balance point (Figure 6). Remove hardware which secures loader to pallet. Remove linch pins and hitch pins from loader uprights (Figure 8).



WARNING: Loader uprights may rotate downward when loader is lifted from pallet.

2. Raise loader from shipping position and remove pallet, lower loader (scraps of cardboard may be used to protect paint).
3. Install hydraulic plumbing on loader and tractor. Tractors equipped with mid-mount valves require hydraulic plumbing kit (2-6837). Tractors using rear remotes require plumbing kit (2-6835) or (2-6836).



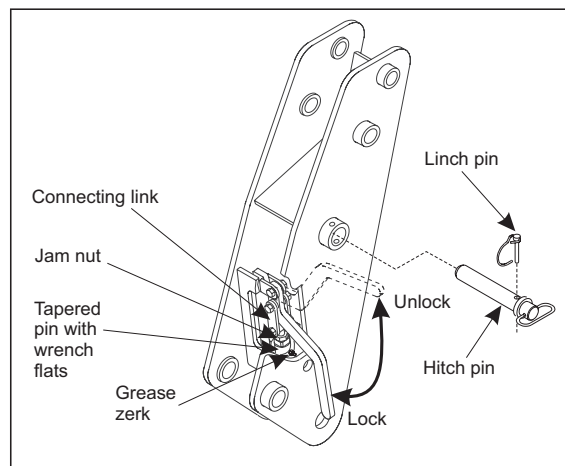
5. Secure a hoist strap around the boom arm assembly or secure with a chain hook into hole provided in underside of boom arm. If using a strap, the strap should be located around the boom arm in about the same location (See figure 7).

Slowly raise loader with overhead hoist until loader upright will clear tractor tires or fenders (See figure 7).

6. Drive tractor into loader until mounts and loader uprights are 10" to 14" apart. Shut off engine. Attach lift cylinder function hoses (color coded green and yellow) to corresponding tractor couplers. **NOTE:** Route hoses under tractor exhaust.

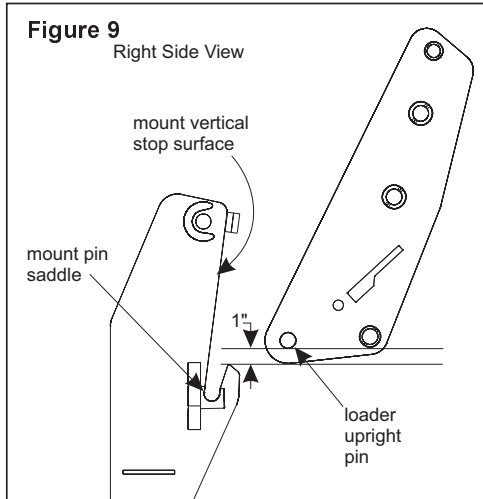
NOTE: Important to attach lift cylinder hoses (yellow and green spiral band coded) for loader to function properly.

7. Start engine. Retract lift cylinders fully and continue to activate control lever for approximately 10 seconds. Cycle cylinders several times to remove air. Extend lift cylinders 10" to 12" from the fully closed position. Shut off engine.



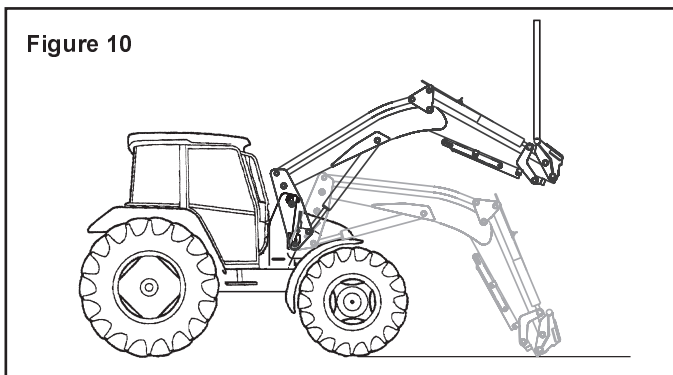
MOUNTING 7214 LOADER (Continued)

8. With overhead hoist, position loader upright pin to clear mount pin saddle by 1" (see figure 9). Move tractor forward until both loader upright pins come to rest against the flat vertical stop surface of both mounts. Lower loader with overhead hoist until both loader upright pins rest into mount pin saddles.



9. Remove hoist chain or strap from loader boom and secure to quick attach assembly. Using overhead hoist raise front of loader to rotate loader upright into upper mount saddle (Refer to Figure 10). Continue to rotate loader upright until upright has fully seated into back of mount saddle. Insert two 1-1/2 x 8" pins and linch pins which were removed from loader uprights in step 1. Remove hoist chain or strap from loader boom.

NOTE: In some cases a small amount of additional force may be required to insert the pins.



10. Attach tilt cylinder function hoses (color coded blue and red) to corresponding tractor couplers.

INSTALLING BUCKET OR ATTACHMENT

Refer to loader operator's manual to install bucket or optional attachments.

WARNING: Always have an attachment mounted to loader when it is removed from tractor.

**ADJUST BUCKET LEVEL INDICATOR**

Refer to instruction sheet and assembly manual with bucket or optional attachments.

11. Start engine and slowly cycle all cylinders several times with full strokes to purge air from hydraulic system. Replenish hydraulic system using hydraulic oil as recommended in your tractor operator's manual.

12. Adjust front wheel tread settings or steering stops, if necessary, to provide a minimum 3/4 inch clearance between front tires and any part of loader with lift cylinders fully retracted and front axle fully oscillated. Be sure lift cylinders are fully retracted. Refer to page 1 under preparing tractor. Refer to tractor operator's manual for tread setting and steering stop adjustment procedures.

NOTE: Crosstie hardware must be retorqued after initial 10 hours of use and after every additional 100 hours.

GENERAL TORQUE SPECIFICATIONS

USE THE FOLLOWING TORQUES WHEN SPECIAL TORQUES ARE NOT GIVEN

AMERICAN STANDARD CAP SCREWS								METRIC CAP SCREWS							
5				8				8.8				10.9			
TORQUE				TORQUE				TORQUE				TORQUE			
Size	FT-LBS		Nm		Size	FT-LBS		Nm		Size	FT-LBS		Nm		
Inches	MIN	MAX	MIN	MAX	Millimeters	MIN	MAX	MIN	MAX	MIN	MAX	MIN	MAX	MIN	MAX
1/4-20	6.25	7.25	8.5	10	M6x100	6	8	8	11	9	11	12	15		
1/4-28	8	9	11	12	M8 x 1.25	16	20	215	27	23	27	31	36.5		
5/16 - 18	14	15	19	20	M10 x 1.50	29	35	39	47	42	52	57	70		
5/16 - 24	17.5	19	23	26	M12 x 1.75	52	62	70	84	75	91	102	123		
3/8 - 16	26	28	35	38	M14 x 2.00	85	103	115	139	120	146	163	198		
3/8 - 24	31	34	42	46	M16 x 2.50	130	158	176	214	176	216	238	293		
7/16 - 14	41	45	55	61	M18 x 2.50	172	210	233	284	240	294	325	398		
7/16 - 20	51	55	69	74	M20 x 2.50	247	301	335	408	343	426	465	577		
1/2 - 13	65	72	88	97	M22 x 2.50	332	404	450	547	472	576	639	780		
1/2 - 20	76	84	103	114	M24 x 3.00	423	517	573	700	599	732	812	992		
9/16 - 12	95	105	129	142	M27 x 3.00	637	779	863	1055	898	1098	1217	1488		
9/16 - 18	111	123	150	167	M30 x 3.00	872	1066	1181	1444	1224	1496	1658	2027		
5/8 - 11	126	139	171	188											
5/8 - 18	152	168	206	228											
3/4 - 10	238	262	322	355											
3/4 - 16	274	305	371	409											
7/8 - 9	350	386	474	523											
7/8 - 14	407	448	551	607											
1 - 8	537	592	728	802											
1 - 14	670	740	908	1003											

NOTE: These values apply to fasteners as received from the supplier, dry or when lubricated with normal engine oil. They do not apply if special graphite or molydisulphide greases or other extreme pressure lubricants are used.

SAFETY DECALS

NOTE: Loader safety decals are at locations listed below each decal part number. Replace decals if they are damaged or illegible. Replacement decals are available from your dealer.

DECAL P.N. 48921
Location: Left Side
Mid-Mount



DECAL P.N. 47730
Location: Left Side
Mid-Mount

INSTALLATION INSTRUCTIONS