

Keep with Operator's Manual
-----------------------------

## LOADER MOUNTING KIT INSTRUCTIONS SMC & RHINO 2409 LOADER ON CUB CADET 7360SS 4WD TRACTOR

### TRACTOR AND MOUNTING KIT GENERAL INFORMATION

Mounting kit can be installed on tractor using tools ordinarily available. Shut off engine and engage brakes during installation.

### INSTALLING LOADER MOUNTING BRACKETS (Figure 1)

**NOTE:** *Install all attaching hardware loosely (unless noted otherwise) until mounting kit is completely assembled to facilitate assembly and proper alignment. Tighten all hardware to torques specified in general torque specifications table included in the loader operator's manual.*

1. Fasten front mounting bracket (3) to tractor front frame using 12mm-1.25 x 30mm cap screws (8) and 1/2" lock washers (16) in four front holes, and 14mm-1.5 x 40mm cap screws (7) and 9/16" lock washers (15) in side holes (three each side).
2. Temporarily remove tractor hood side panels to avoid damaging them while attaching left and right mounting brackets (1 & 2).
3. Remove 12mm cap screws from left side of tractor side frame and fasten left mid mounting bracket (1) to left side of tractor side frame using 12mm-1.25 x 110mm cap screws (9) and 1/2" lock washers (16) and to left side of transmission casting using 14mm-2 x 35mm cap screws (9) and 9/16" lock washers (15).

**IMPORTANT:** *Remove 12mm cap screws and install mid mounting brackets (1 & 2) to tractor side frames **one side at a time**. Otherwise engine will be unsupported and may shift out of position, causing possible damage and making it impossible to reinstall screws.*

4. Repeat above procedure to fasten right mid mounting bracket (2) to right side of tractor side frame and transmission casting.
5. Slide front of rear reinforcement bracket (4) between left and right mid mounting brackets (1 & 2) and fasten at upper front hole in each side using 5/8-11 x 1-1/2 cap screws (12) and lock nuts (14). Rotate rear of rear reinforcement bracket (4) up, aligning slotted holes in bracket with threaded holes in tractor rear casting, and attach using 12mm-1.75 x 110mm cap screws (7), 1/2" lock

washers (16), and flat washers (17). Finish fastening front of reinforcement bracket (4) to left and right mid mounting brackets (3 & 4) using 5/8-11 x 1-1/2 cap screws (12) and lock nuts (14).

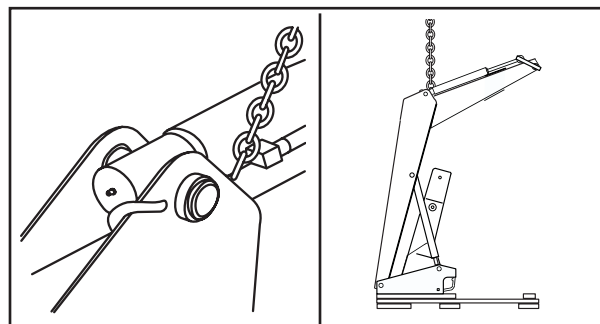
6. Tighten all hardware to torques specified in general torque specifications table included in loader operator's manual. Reinstall tractor hood side panels.

### INSTALLING LOADER ONTO MOUNTING BRACKETS



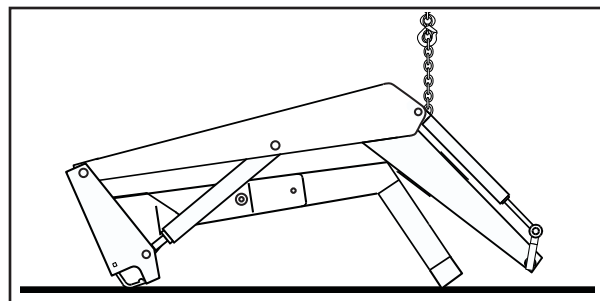
**WARNING:** *To avoid injury during installation of quick attach loader, do not permit bystanders within ten feet of loader.*

1. Loop chain under each lift cylinder and hook on loader boom arm. Using overhead hoist to support loader, remove hardware securing loader to pallet. Lift loader and remove pallet.



**CAUTION:** *Do not damage grease fitting on end of cylinder. Be sure chain does not pinch lift cylinder.*

2. Use overhead hoist to lower loader from vertical shipping position to horizontal position, leaving enough room to install yoke (5). (Use cardboard scraps to protect painted surfaces). Install yoke (5) using 3/4 x 2-1/2" cap screws (11) and lock nuts (13). Lower loader completely to the ground.



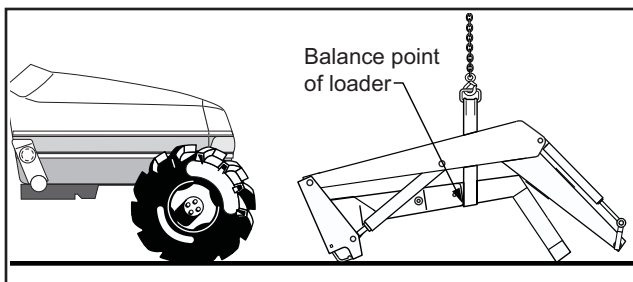
## PARTS LIST – MOUNTING KIT

Item	Part No.	Description	Qty.
1	48898	BRACKET, Mounting, Mid, Left	1
2	48899	BRACKET, Mounting, Mid, Right	1
3	48907	BRACKET, Mounting, Front	1
4	48909	BRACKET, Rear Reinforcement	1
5	49058	BRACKET, Loader Yoke	1
6	6090-136	SCREW, Cap, 12mm-1.25 x 110mm Grade 8.8	8
7	6090-90	SCREW, Cap, 12mm-1.75 x 110mm Grade 8.8	4
8	6090-2	SCREW, Cap, 14mm-1.5 x 40mm Grade 8.8	6
9	6090-56	SCREW, Cap, 14mm-2 x 35mm Grade 8.8	8
10	6090-25	SCREW, Cap, 12mm-1.25 x 30mm Grade 8.8	4
11	41838-7	SCREW, Cap, 3/4-10 x 2-1/2" Grade 5	4
12	41838-29	SCREW, Cap, 5/8-11 x 1-1/2" Grade 5	8
13	41836-8	NUT, Lock, 3/4-10, Type N	4
14	41836-7	NUT, Lock, 5/8-11, Type-N	8
15	41837-6	WASHER, Lock, 9/16"	14
16	41837-5	WASHER, Lock, 1/2"	16
17	42502-10	WASHER, Flat, 1/2"	4
18	39240	DECAL, WARNING, Do Not Tow	2

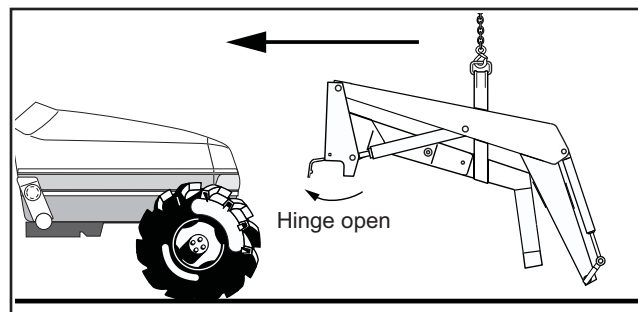
### INSTALLING LOADER ONTO MOUNTING BRACKETS (Continued)

**NOTE:** Hardware connecting yoke to loader side frames should be snug, but do not torque completely. After loader has been mounted to tractor and aligned with mid mounting brackets and front mounting brackets, torque hardware to 239-262 ft.·lbs.

3. Install hose or valve kit to tractor and loader. Refer to installation instructions provided with hose or valve kit.
4. Reposition overhead hoist by looping nylon strap around yoke near loader side frames at balance point of loader.



5. Using overhead hoist, raise loader until side frame uprights will clear front tires. Remove lock nut and washer from loader hinge and swing each hinge open.

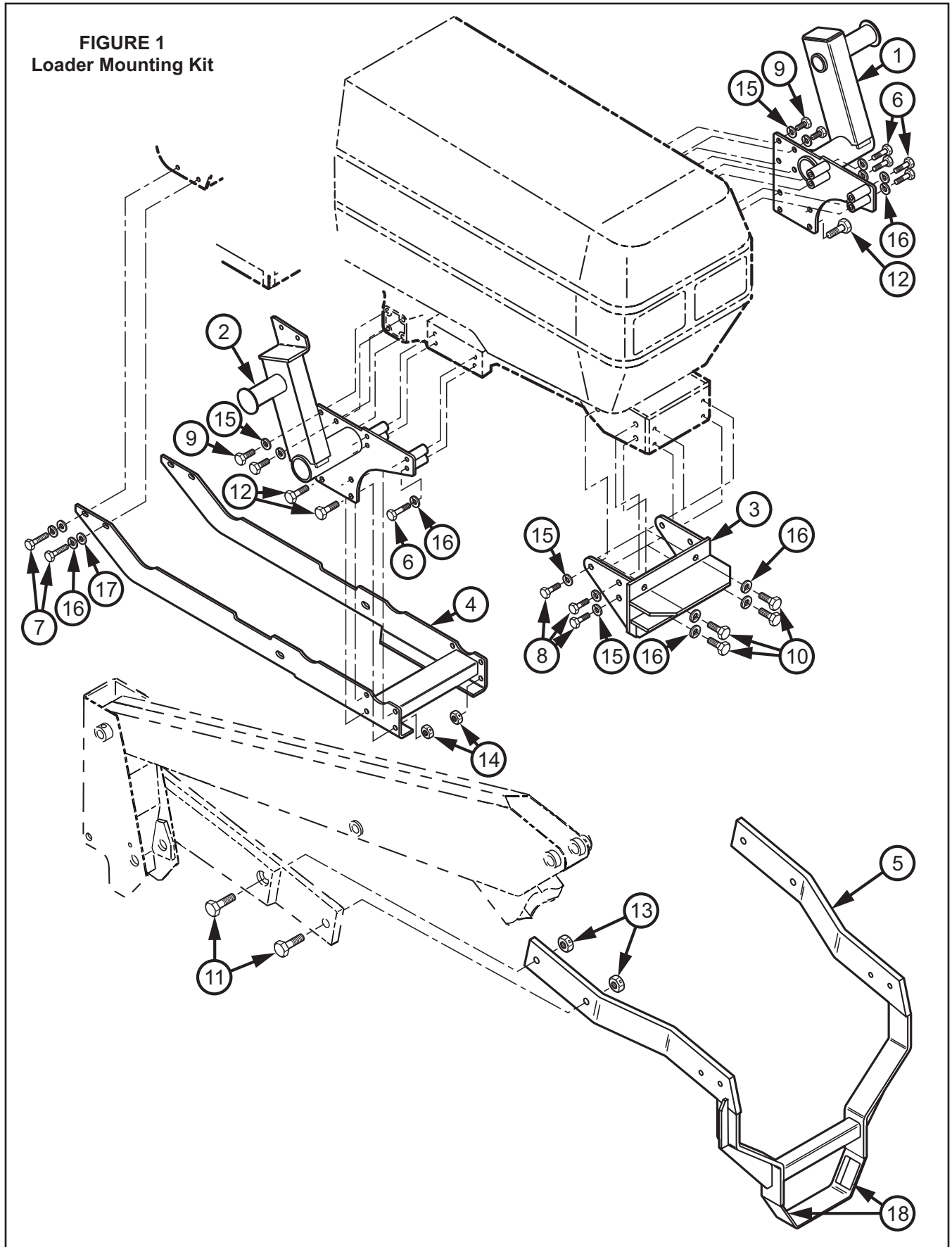


6. Position loader so hinges hook over mid mounting tubes and yoke tube fits inside front mounting bracket.
7. Clamp hinges to mid mounting tubes with 3/4" flat washers and 3/4" flex-lock nuts (supplied with loader).

**IMPORTANT:** Be sure to use flex-lock nuts to clamp hinge. Tighten flex-lock nuts against hinge securely, but not to more than 125 ft.·lbs. torque.

8. Adjust front wheel tread setting or steering stops, if necessary, to prevent interference between tires and loader. Refer to tractor operator's manual for adjustment procedures.

**FIGURE 1**  
**Loader Mounting Kit**

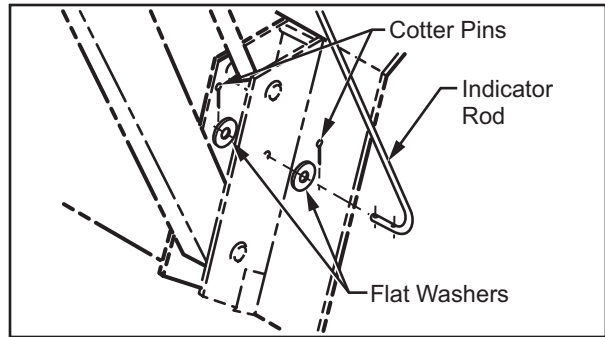
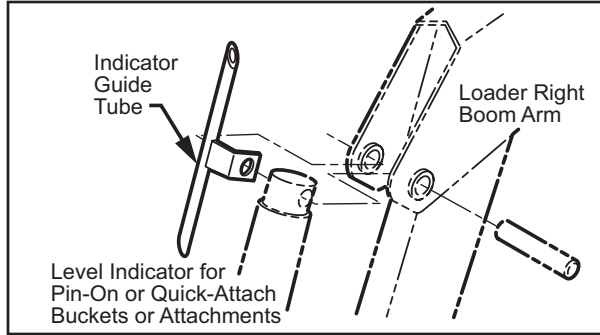


**INSTALLING BUCKET OR ATTACHMENT**

Refer to instruction sheet provided with bucket or attachment for instructions to install bucket or attachment.

**INSTALLING LEVEL INDICATOR**

1. Attach indicator guide tube to cylinder pin. Guide tube is positioned to outside of boom.



2. Slide bucket level indicator rod through guide tube. Attach other end of rod with 1/8 x 1" cotter pins and 3/8" flat washers.
3. Locate tractor and loader on level surface. With bottom of bucket resting on surface, cut off excess rod flush with end of guide tube or paint exposed rod a contrasting color.

**GENERAL TORQUE SPECIFICATIONS**

USE THE FOLLOWING TORQUES WHEN SPECIAL TORQUES ARE NOT GIVEN

AMERICAN STANDARD CAP SCREWS									METRIC CAP SCREWS								
SAE Grade	5				8				Metric Class	8.8				10.9			
Typical Grade ID Markings on Head									Typical Grade ID Markings on Head								
Cap Screw Size	TORQUE				TORQUE				Cap Screw Size	TORQUE				TORQUE			
	FT-LBS		N·m		FT-LBS		N·m			FT-LBS		N·m		FT-LBS		N·m	
Inches	MIN	MAX	MIN	MAX	MIN	MAX	MIN	MAX	Millimeters	MIN	MAX	MIN	MAX	MIN	MAX	MIN	MAX
1/4-20	6.25	7.25	8.5	10	8.25	9.5	11	13	M6 x 1.00	6	8	8	11	9	11	12	15
1/4-28	8	9	11	12	10.5	12	14	16	M8 x 1.25	16	20	21.5	27	23	27	31	36.5
5/16-18	14	15	19	20	18.5	20	25	27	M10 x 1.50	29	35	39	47	42	52	57	70
5/16-24	17.5	19	23	26	23	25	31	34	M12 x 1.75	52	62	70	84	75	91	102	123
3/8-16	26	28	35	38	35	37	47.5	50	M14 x 2.00	85	103	115	139	120	146	163	198
3/8-24	31	34	42	46	41	45	55.5	61	M16 x 2.50	130	158	176	214	176	216	238	293
7/16-14	41	45	55.5	61	55	60	74.5	81	M18 x 2.50	172	210	233	284	240	294	325	398
7/16-20	51	55	69	74.5	68	75	92	102	M20 x 2.50	247	301	335	408	343	426	465	577
1/2-13	65	72	88	97.5	86	96	116	130	M22 x 2.50	332	404	450	547	472	576	639	780
1/2-20	76	84	103	114	102	112	138	152	M24 x 3.00	423	517	573	700	599	732	812	992
9/16-12	95	105	129	142	127	140	172	190	M27 x 3.00	637	779	863	1055	898	1098	1217	1488
9/16-18	111	123	150	167	148	164	200	222	M30 x 3.00	872	1066	1181	1444	1224	1496	1658	2027
5/8-11	126	139	171	188	168	185	228	251	<p><b>NOTE:</b> These values apply to fasteners as received from supplier, dry or when lubricated with normal engine oil. They do not apply if special graphite or molydisulphide greases or other extreme pressure lubricants are used.</p>								
5/8-18	152	168	206	228	203	224	275	304									
3/4-10	238	262	322	355	318	350	431	474									
3/4-16	274	305	371	409	365	402	495	544									
7/8-9	350	386	474	523	466	515	631	698									
7/8-14	407	448	551	607	543	597	736	809									
1-8	537	592	728	802	716	790	970	1070									
1-14	670	740	908	1003	894	987	1211	1337									

# INSTALLATION INSTRUCTIONS