

Keep With Loader Operator's Manual

SMC 2410 LOADER MOUNTING KIT INSTRUCTIONS KUBOTA TRACTORS

MODEL	2WD	4WD	LESS CAB	WITH CAB
M6800		X	X	X

Mounting brackets can be installed using tools ordinarily available. Check tire clearances once loader is installed and adjust tread width if necessary. Shut off tractor engine and engage tractor brakes during installation.

NOTE: Leave all attaching hardware loose until mounting brackets are completely assembled to facilitate assembly and proper alignment. Tighten all hardware to torque specifications in loader operators manual.

INSTALLING MOUNTING BRACKETS (Figure 1)

1. Install front mounting bracket (1) using 16MM x 35MM cap screws (14) and 5/8 lock washers (9).
2. On tractor models with cab, it is necessary to relocate the fuel pipe on left side of tractor. Remove fuel pipe bracket from tractor and retain hardware. Replace with mounting plate (23) and secure to tractor using retained hardware. Reattach original bracket to mounting plate (23) using 1/4 x 3/4 cap screws (20), 1/4 lock washers (21), and 1/4 nuts (22).

NOTE: For tractors without cab, use spacer plates (8) between midmounting brackets (3 & 4) and transmission casting of tractor. Use spacer tubes (24) be-

tween midmounting brackets (3 & 4) and tractor frame.

3. Install midmounting brackets (3 & 4) to right and left side of tractor transmission casting using 16MM x 75MM cap screws (15) and 5/8 lock washers (9) and 5/8 flat washers (19) as shown in figure 1. Secure mid mounting brackets (3 & 4) to tractor frame using 14MM x 90MM cap screws (17) and 9/16 lock washers (18).
4. Install front crossmember (2) to right and left midmounting assemblies (3 & 4) using 5/8 x 1-3/4 cap screws (16) and 5/8 lock nuts (11).
5. Install rear crossmember (6) to right and left midmounting assemblies (3 & 4) using 5/8 x 1-3/4 cap screws (16) and 5/8 lock nuts (11).
6. Fasten rear crossmember (6) to under side of tractor transmission casting using 16MM x 100MM cap screws (7) and 5/8 lock washers (9).

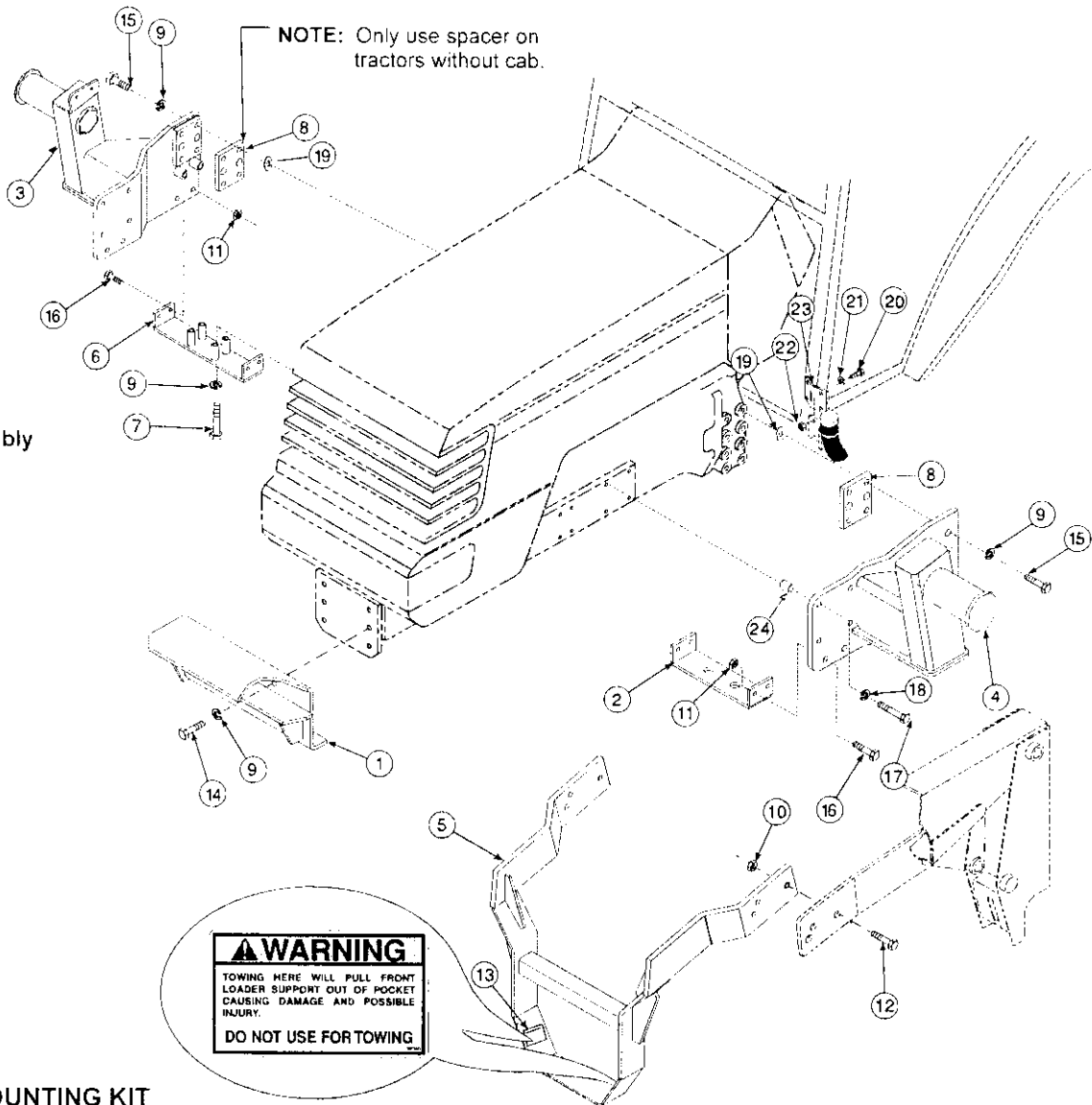


Figure 1
Mount Kit Assembly

PARTS LIST - MOUNTING KIT

ITEM	PART NO.	DESCRIPTION	QTY.
1	49116	BRACKET, Front Mounting	1
2	49122	CROSSMEMBER, Front	1
3	49132	BRACKET, Midmounting, Right	1
4	49133	BRACKET, Midmounting, Left	1
5	49202	YOKE ASSEMBLY, with Decals	1
6	49119	CROSSMEMBER, Rear	1
7	6090-13	SCREW, Cap, 16MM-1.50 x 100MM	4
8	49142	SPACER PLATE	2
9	G121574	WASHER, Lock, 5/8	20
10	G9414076	NUT, Lock, 3/4-10	6
11	G9414075	NUT, Lock, 5/8-11	8
12	G271773	SCREW, Cap, 3/4-10 x 2-1/2	6
13	39240	DECAL, "WARNING, Do Not Use For Towing"	2
14	6090-6	SCREW, Cap, 16MM-1.50 x 35MM	4
15	6090-140	SCREW, Cap, 16MM-1.50 x 75MM	12
16	G271548	SCREW, Cap, 5/8-11 x 1-3/4	8
17	6090-139	SCREW, Cap, 14MM-1.50 x 90MM	8
18	G120898	WASHER, Lock, 9/16	8
19	G131016	WASHER, Flat, 5/8	8
20	G180020	SCREW, Cap, 1/4-20 x 3/4	2
21	G120380	WASHER, Lock, 1/4	2
22	G120375	NUT, 1/4-20	2
23	49144	MOUNTING PLATE	1
24	49208-1	SPACER TUBE	8

INSTALLING LOADER TO MOUNTING BRACKETS

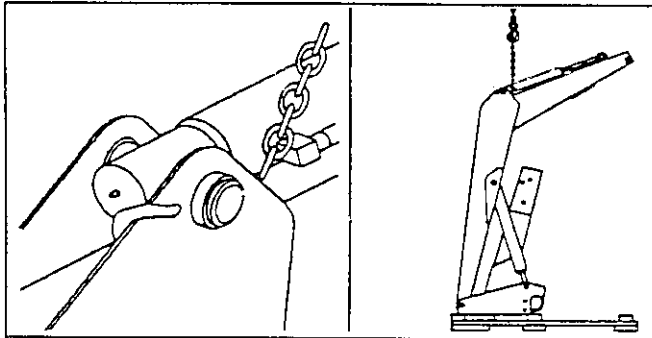


WARNING: To avoid injury during installation of quick attach loader, do not permit bystanders within ten feet of loader.

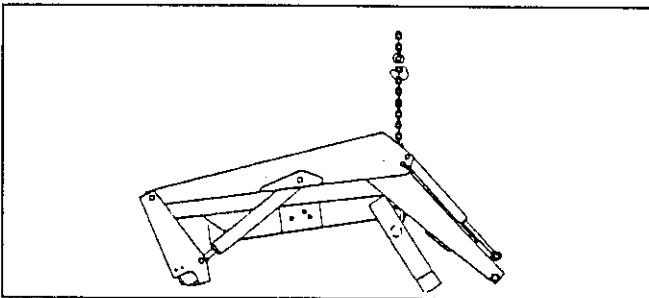
1. Loop chain under each lift cylinder and hook on loader boom arm. Using overhead hoist to support loader remove hardware securing loader to pallet. Lift loader and remove pallet.



CAUTION: Do not damage grease fitting on end of cylinder. Be sure chain does not pinch lift cylinder hose.

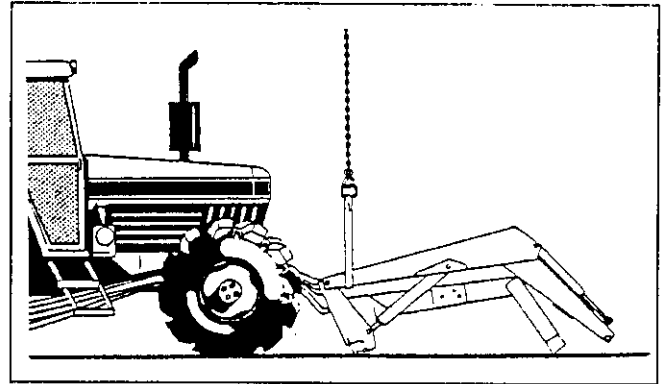


2. Using overhead hoist, lower loader from vertical shipping position to horizontal position leaving enough room to install yoke (scraps of cardboard may be used to protect paint). Install yoke assembly (5) using 3/4 x 2-1/2 cap screws (12) and 3/4 lock nuts (10). Lower loader completely to the ground.

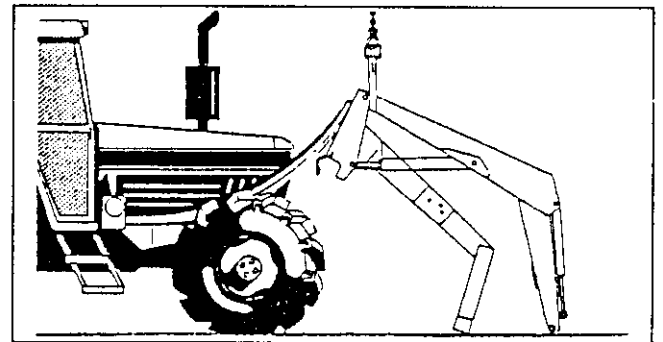


NOTE: Hardware connecting yoke to loader side-frames should be snug but do not torque completely. After loader has been mounted to tractor and aligned with midmounting brackets and front mounting brackets, torque hardware to specifications in loader operators manual.

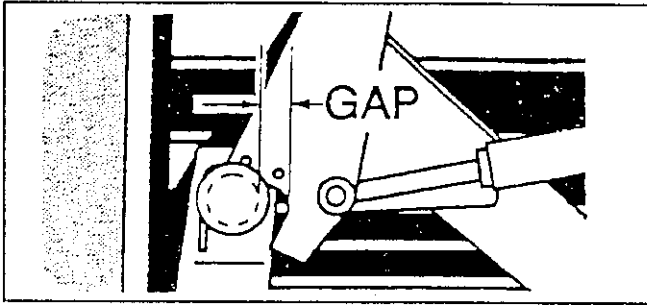
3. Install hose or valve kit to tractor and loader. Refer to assembly manual provided for installation instructions.
4. Position tractor close enough so plumbing can be connected to tractor. Route hoses loosely to allow maximum reach. Using nylon straps reposition overhead hoist to loader boom arms near pivot point to side frames.
5. Operate loader control valve to extend lift cylinders until front yoke is resting on ground and side frame uprights will clear front tires. Shut off tractor engine and engage tractor brakes. Reroute loader hoses to inside of right midmount bracket. Remove locknut and washer from loader hinge and swing each hinge open.



6. Start tractor engine, release tractor brakes and slowly drive forward while operating lift control levers to retract lift cylinders. Position loader so hinges hook over mid mounting tubes. Use of overhead hoist will facilitate positioning loader into mid mounting tubes.



INSTALLING LOADER TO MOUNTING BRACKETS (Continued)



IMPORTANT: Position loader uprights so mid mounting tubes are tight against hinges until loader has finished rotating so loader front bumper tube does not hit lower flange of front mounting channel.

7. With tractor in neutral, retract lift cylinders, bringing side frame up so front yoke tube contacts upper flange of front mounting bracket channel. Move tractor ahead until front yoke tube engages in front mounting channel and upright hinges can clamp around mid mounting tube. Engage tractor brakes and shut off tractor engine.

8. Clamp hinges to midmounting tubes with 3/4 flat washers and 3/4 flex-lock nuts (supplied with loader).

NOTE: Only one washer per side is necessary for mounting. Second washer is for shipping purposes only.

IMPORTANT: Be sure to use flex-lock nuts to clamp hinge. Tighten flex-lock nuts against hinge securely, but not to more than 125 ft.-lb. torque.

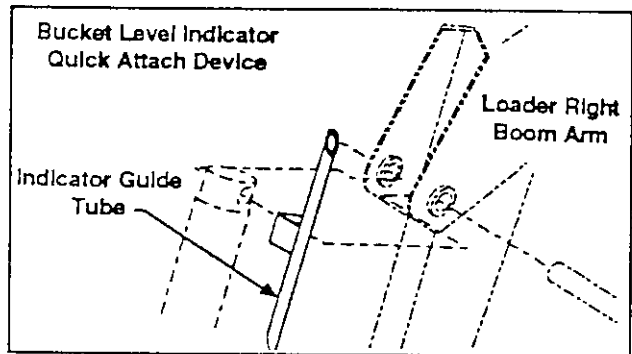
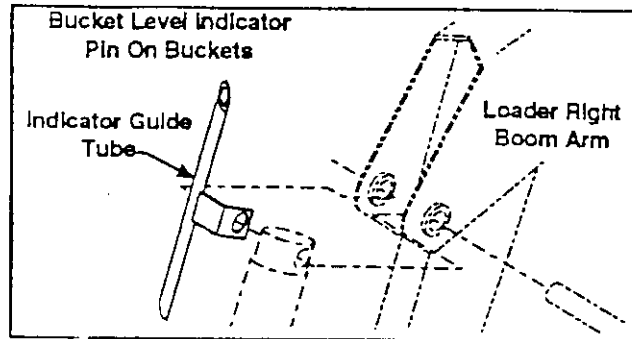
9. Adjust front wheel tread settings or steering stops, if necessary to prevent interference between tires and loader. Refer to tractor operator's manual for adjustment procedures.

INSTALLING BUCKET OR OPTIONAL ATTACHMENT

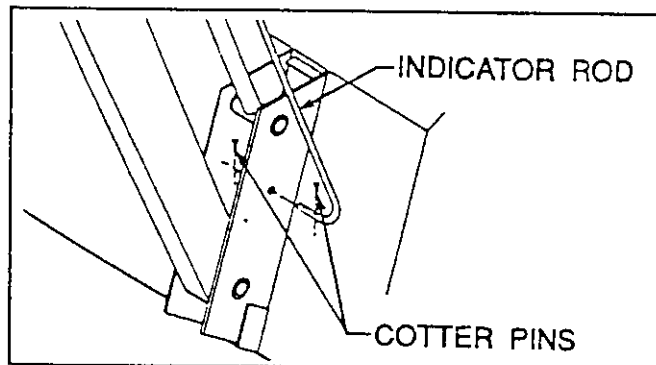
Refer to loader operator's manual for instructions on installing bucket or optional attachment.

INSTALLING BUCKET LEVEL INDICATOR

1. Attach indicator guide tube to cylinder pin. Guide tube is positioned to outside of boom for pin on attachments and inside of boom when quick attach device is used.



2. Slide bucket level indicator rod through guide tube. Attach other end of rod with 1/8 x 1 cotter pins. If pin on bucket is used, attach lower end of rod to bucket ear. If quick attach device is used, attach lower end of rod to quick attach device.



3. Locate tractor and loader on level surface. With bottom of bucket resting on surface, cut off excess rod flush with end of guide tube or paint exposed rod a contrasting color.