

Keep with Operator's Manual

## LOADER MOUNTING KIT 2410 LOADER CASE IH TRACTORS

MODEL	2WD	FWA	ROPS
C50 & C60	X	X	X

### TRACTOR AND MOUNTING KIT GENERAL INFORMATION

Mounting kit can be installed on tractor using tools ordinarily available, including an overhead hoist and sling for initial loader installation, standard and metric wrenches, and a torque wrench.

Reference to left and right used in these instructions refer to position when seated in the operating position on tractor.

If tractor is equipped with front bumper or weights, remove front bumper or weights and weight bracket before installing loader mounting brackets.

If tractor is to be equipped with compatible front grille guard, install grille guard with loader front mounting bracket. Refer to instructions provided with grille guard.

Check front tire clearances once loader is installed and adjust tire track width as necessary.

Tractor steering stops may need to be adjusted to provide clearance between front tire and loader on full left and right turn with front axle fully oscillated. Be sure lift cylinders are fully retracted when checking tire clearances.

Shut off engine and engage brakes during installation.

### INSTALLING LOADER MOUNTING BRACKETS (Figure 1)

**NOTE:** Install all attaching hardware loose (unless noted otherwise) until mounting kit is completely assembled to facilitate assembly and proper alignment. Unless otherwise specified, tighten all hardware to torques specified in general torque specifications table.



**CAUTION:** Mount kit contains cap screws with 20mm-2.5 thread and 3/4-10 thread, which are very similar. However, 20mm-2.5 thread cap screws can damage holes with 3/4-10 threads. Take care to match thread types and sizes before threading cap screws into threaded holes.

Threaded holes in tractor front casting are 20mm-2.5; threaded holes in tractor transmission casting are 3/4-10.

### Attaching Loader Front Mounting Bracket (1)

- Placing 3/8 x 2-1/4 x 5" flat spacers (8) between front mounting bracket (1) and front of tractor casting, fasten front mounting bracket (1) and spacers (8) to front of tractor casting using 20mm x 50mm cap screws (12) and lock washers (13).

**NOTE:** If tractor is to be equipped with grille guard, do not use spacers (8), as mounting plate of grille guard replaces spacers (8). Refer to instructions provided with grille guard.

- Fasten side attaching plates of front mounting bracket (1) to sides of tractor front casting using 20mm x 60mm cap screws (11) and lock washers (13) in upper holes only.

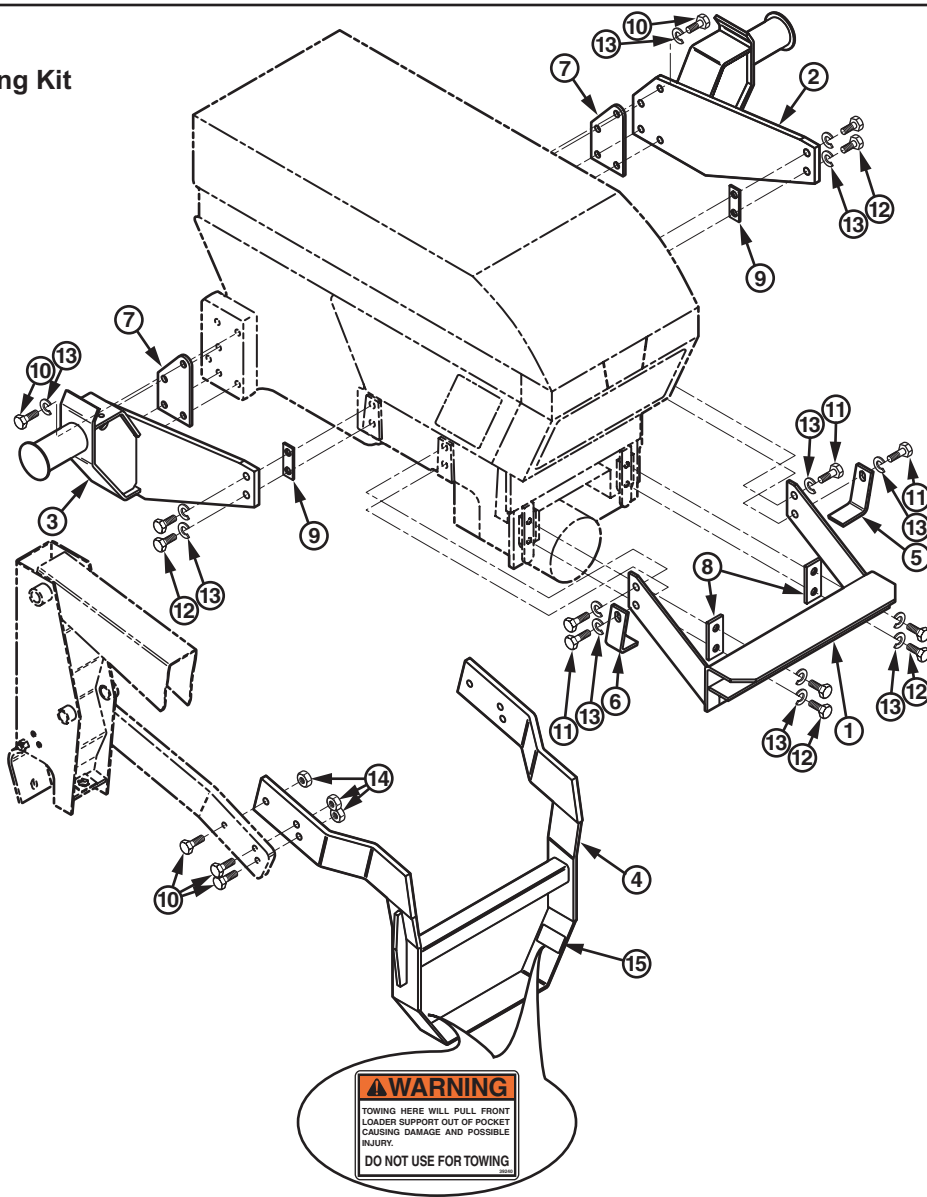
**NOTE:** If tractor is to be equipped with grille guard, place grille guard support bars to outside of attachment plates of front mounting bracket (1) at top holes. Use 10mm x 60 cap screws (11) and lock washers (13) to fasten grille guard support bars and loader front mounting bracket to sides of tractor front casting. Refer to instructions provided with grille guard.

- Fasten left oscillation stop (5) to left side of tractor front frame through lower hole at rear of front mounting bracket (1) using 20mm x 60mm cap screw (11) and lock washer (13). Fasten right oscillation stop (6) to right side of tractor front casting through lower hole on right side of front mounting bracket (1) using 20mm x 60mm cap screw (11) and lock washer (13).

### Attaching Left and Right Mounting Brackets (2 & 3)

- Place 3/8 x 5 x 9" spacer (7) between loader left mounting bracket (2) and left side of tractor transmission casting. Place 1/4 x 1-1/2 x 4-1/4" spacer (9) between loader left mounting bracket (2) and left side of tractor front casting. Fasten left mid mounting bracket (2) and rear spacer (7) to tractor transmission casting using 3/4 x 2-1/4" cap screws and 20mm lock washers (13). Fasten left mid mounting bracket (2) and front spacer (9) to left side of tractor front casting using 20mm x 50mm cap screws (12) and lock washers (13).

Figure 1  
Loader Mounting Kit



**PARTS LIST – LOADER MOUNTING KIT**

Item	Part No.	Description	Qty.
1	49236	BRACKET, Mounting, Front (Includes item 15)	1
2	49240	BRACKET, Mounting, Mid, Left	1
3	49244	BRACKET, Mounting, Mid, Right	1
4	49228	BRACKET, Yoke, With Decal	1
5	49245-1	OSCILLATION STOP, Left	1
6	49245-2	OSCILLATION STOP, Right	1
7	49247	SPACER, Plate, 3/8 x 5 x 9"	2
8	49246	SPACER, Plate, 3/8 x 2-1/4 x 5"	2
9	49248	SPACER, Plate, 1/4 x 1-1/2 x 4-1/4"	4
10	41838-7	SCREW, Cap, 3/4-10 x 2-1/2", Grade 5	14
11	42672-39	SCREW, Cap, 20mm-2.5 x 60mm, Class 8.8	4
12	42672-37	SCREW, Cap, 20mm-2.5 x 50mm, Class 8.8	8
13	48093-2	WASHER, Lock, 20mm	20
14	41840-8	NUT, Lock, 3/4-10, Type-N	6
15	39240	DECAL, Warning: Do Not Tow	2

- Place 3/8 x 5 x 9" spacer (7) between loader right mounting bracket (3) and right side of tractor transmission casting. Place 1/4 x 1-1/2 x 4-1/4" spacer (9) between loader right mounting bracket (3) and right side of tractor front casting. Fasten right mid mounting bracket (3) and rear spacer (7) to tractor transmission casting using 3/4 x 2-1/4" cap screws and 20mm lock washers (13). Fasten right mid mounting bracket (3) and front spacer (9) to right side of tractor front casting using 20mm x 50mm cap screws (12) and lock washers (13).

### INSTALLING LOADER ONTO TRACTOR AND MOUNTING BRACKETS

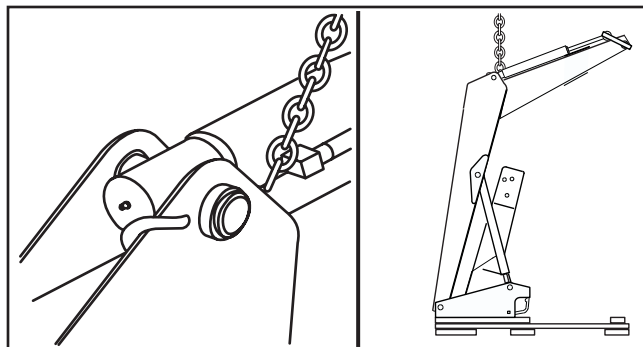


**WARNING:** To avoid injury during installation of quick attach loader, do not permit bystanders within ten feet of loader.

- Loop chain under each lift cylinder and hook on loader boom arm. Using overhead hoist to support loader, remove hardware which secures loader to pallet. Lift loader and remove pallet.



**CAUTION:** Do not damage grease fitting on end of cylinder. Be sure chain does not pinch lift cylinder hose.

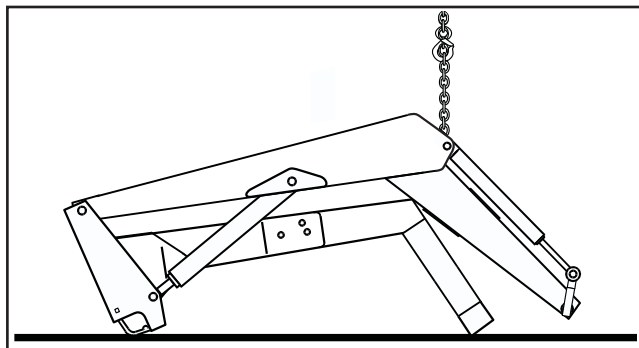


- Lower loader from vertical shipping position to horizontal position, leaving enough space to install yoke. (Use scraps of cardboard to protect paint.) Fasten yoke (4) to loader side frames using 3/4 x 2-1/2" cap screws (10) and lock nuts (14). Lower loader completely to ground.

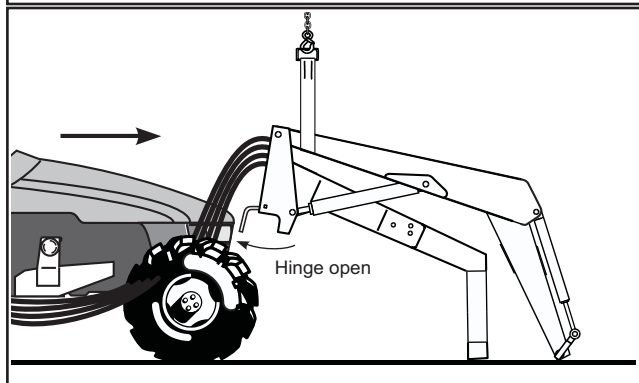
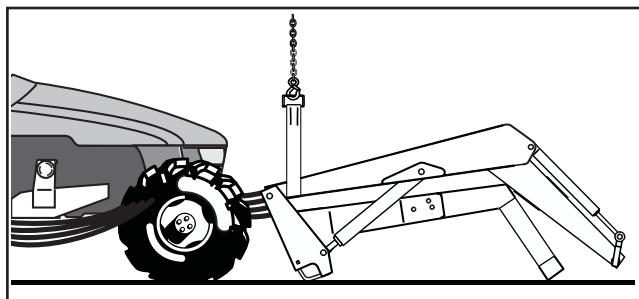
**NOTE:** Snug hardware connecting yoke to loader side frames, but do not torque completely. After loader has been mounted to tractor and aligned with mid mounting brackets and front mounting bracket, tighten hardware to torque specified in general torque specifications table.

- Install hose or valve kit to tractor and loader. Refer to instructions provided with hose kit or valve and plumbing kit.

- Position tractor close enough so plumbing can be connected to tractor. Route hoses loosely to allow maximum reach. Reposition overhead hoist to loader boom arms near pivot point between side frames and loader boom arms. Using nylon straps, use overhead hoist to assist loader installation.

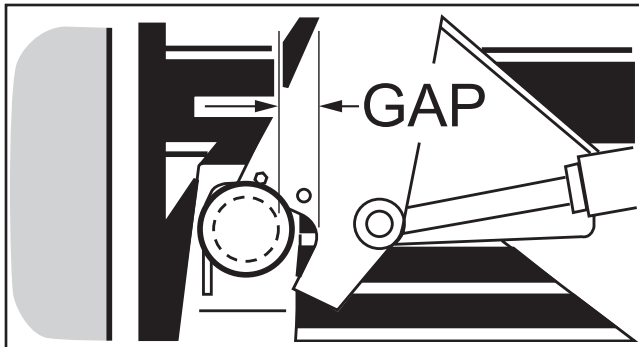


- Operate loader control valve to extend lift cylinders until front yoke is resting on ground and side frame uprights will clear front tires. Shut off tractor engine and engage tractor brakes. Reroute loader hoses to inside of right mid mounting bracket. Remove lock nut and washer from loader hinge and swing each hinge open.



- Start tractor engine, release brakes and slowly drive forward while operating control levers to retract lift cylinders. Position loader so hinges hook over mid mounting tubes. Use overhead hoist to position loader onto mid mounting tubes.

**INSTALLING LOADER ONTO TRACTOR AND  
LOADER MOUNTING BRACKETS (Continued)**



**IMPORTANT:** Position loader uprights so mid mounting tubes are tight against hinges until loader has finished rotating so loader yoke tube does not hit lower flange of front mounting channel.

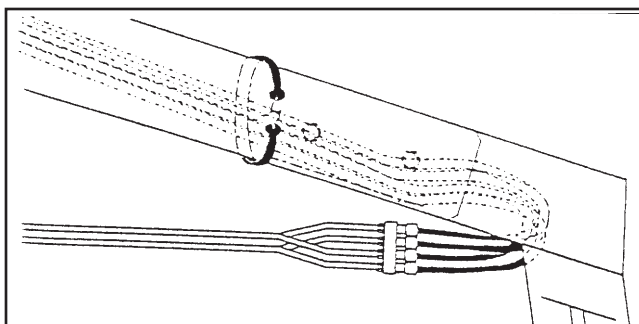
7. With tractor in neutral, retract lift cylinders, bringing side frame up so front yoke tube contacts upper flange of front mounting bracket channel. Move tractor ahead until front yoke tube engages in front mounting channel and upright hinges can clamp around mid mounting tube. Engage tractor brakes and shut off tractor engine.

8. Clamp hinges to mid mounting bracket tubes with 3/4" flat washers and 3/4" flex-lock nuts (supplied with loader).

**NOTE:** Only one washer per side is necessary for mounting. Second washer is for shipping purposes only.

**IMPORTANT:** Be sure to use flex-lock nuts to clamp hinge. Tighten flex-lock nuts against hinge securely, but not to more than 125 ft.·lbs. torque.

9. Loop hoses and secure rubber strap to front mounting yoke to maintain tension on hoses. Check to make sure hoses are held away from tractor tires or other moving parts.



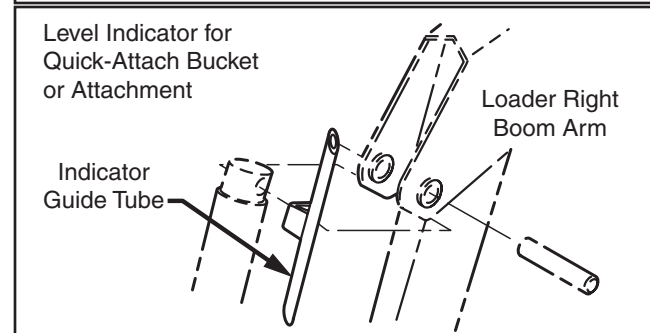
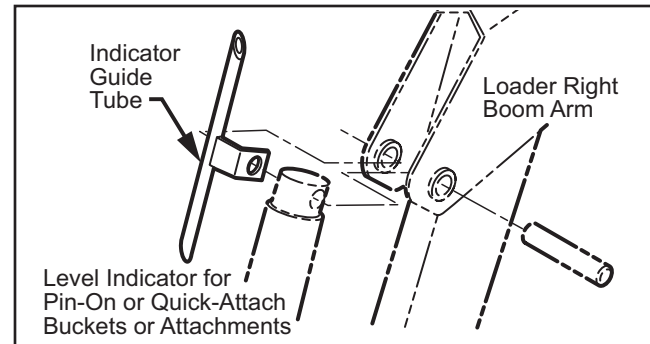
10. Adjust front wheel tread settings and steering stops, if necessary to prevent interference between tires and loader. Refer to tractor operator's manual for adjustment procedures.

**INSTALLING BUCKET OR OPTIONAL  
ATTACHMENT**

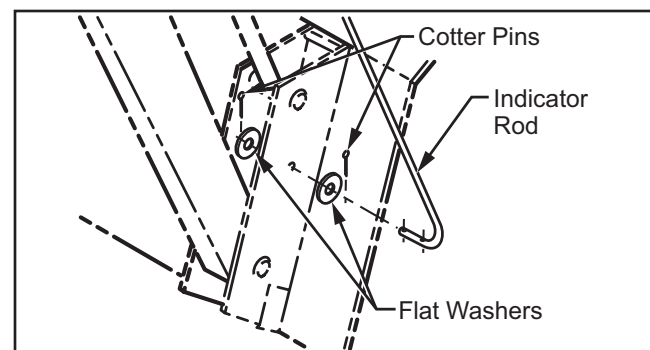
Refer to loader operator's manual for instructions for installing bucket or optional attachment.

**INSTALLING LEVEL INDICATOR**

1. Attach indicator guide tube to cylinder pin. Guide tube is positioned to outside of boom for pin-on attachments and to inside of boom when quick attach device is used.



2. Slide level indicator rod through guide tube. Attach other end of rod with 1/8 x 1" cotter pins and flat washers. If pin-on attachment is used, attach lower end of rod to attachment ear. If quick-attach device is used, attach lower end of rod to quick attach device.







3. Locate tractor and loader on level surface. With bottom of bucket or attachment resting on surface, cut off excess rod flush with end of guide tube or paint exposed rod a contrasting color.

## GENERAL TORQUE SPECIFICATIONS

USE THE FOLLOWING TORQUES WHEN SPECIAL TORQUES ARE NOT GIVEN

### Standard American and Metric Cap Screws

AMERICAN STANDARD CAP SCREWS										METRIC CAP SCREWS								
SAE Grade	5				8				Metric Class	8.8				10.9				
Typ. Head Markings									Typ. Head Markings									
Cap Screw	TORQUE				TORQUE				Cap Screw	TORQUE				TORQUE				
Size	FT·LBS		N·m		FT·LBS		N·m		Size	FT·LBS		N·m		FT·LBS		N·m		
Inches	MIN	MAX	MIN	MAX	MIN	MAX	MIN	MAX	Millimeters	MIN	MAX	MIN	MAX	MIN	MAX	MIN	MAX	
1/4 - 20	6.25	7.25	8.5	10	8.25	9.5	11	13	M6 x 1.00	6	8	8	11	9	11	12	15	
1/4 - 28	8	9	11	12	10.5	12	14	16	M8 x 1.25	16	20	21.5	27	23	27	31	36.5	
5/16 - 18	14	15	19	20	18.5	20	25	27	M10 x 1.50	29	35	39	47	42	52	57	70	
5/16 - 24	17.5	19	23	26	23	25	31	34	M12 x 1.75	52	62	70	84	75	91	102	123	
3/8 - 16	26	28	35	38	35	37	47.5	50	M14 x 2.00	85	103	115	139	120	146	163	198	
3/8 - 24	31	34	42	46	41	45	55.5	61	M16 x 2.50	130	158	176	214	176	216	238	293	
7/16 - 14	41	45	55.5	61	55	60	74.5	81	M18 x 2.50	172	210	233	284	240	294	325	398	
7/16 - 20	51	55	69	74.5	68	75	92	102	M20 x 2.50	247	301	335	408	343	426	465	577	
1/2 - 13	65	72	88	97.5	86	96	116	130	M22 x 2.50	332	404	450	547	472	576	639	780	
1/2 - 20	76	84	103	114	102	112	138	152	M24 x 3.00	423	517	573	700	599	732	812	992	
9/16 - 12	95	105	129	142	127	140	172	190	M27 x 3.00	637	779	863	1055	898	1098	1217	1488	
9/16 - 18	111	123	150	167	148	164	200	222	M30 x 3.00	872	1066	1181	1444	1224	1496	1658	2027	
5/8 - 11	126	139	171	188	168	185	228	251	<p><b>NOTE:</b> These values apply to fasteners as received from supplier, dry or when lubricated with normal engine oil. They do not apply if special graphite or molysulphide greases or other extreme lubricants are used.</p>									
5/8 - 18	152	168	206	228	203	224	275	304										
3/4 - 10	238	262	322	355	318	350	431	474										
3/4 - 16	274	305	371	409	365	402	495	544										
7/8 - 9	350	386	474	523	466	515	631	698										
7/8 - 14	407	448	551	607	543	597	736	809										
1 - 8	537	592	728	802	716	790	970	1070										
1 - 14	670	740	908	1003	894	987	1211	1337										

# **INSTALLATION INSTRUCTIONS**