

SUBFRAME KIT

KIOTI 1550 & KB2085 BACKHOE

KIOTI DK45 & DK50 TRACTORS

Subframe can be installed on tractor and backhoe using tools ordinarily available. Tractor must be equipped with Kioti loader to provide adequate counter weight. 3-point linkage for 3-point must be removed (see caution below). Reference to right or left as viewed while sitting on backhoe seat.

Complete backhoe installation requires pump kit or hose kit to operate backhoe from DK45 or DK50 tractor hydraulic system.

Read backhoe operators manual and become familiar with backhoe controls before installing subframe. Knowing how backhoe functions is necessary to attach subframe and backhoe to tractor.

Install swing lock pin so boom remains in straight back position.

INSTALLING MOUNTING BRACKETS TO TRACTOR (Figure 1)

1. Remove six dust plugs from bottom of transmission casting.
2. Install front subframe mounting bracket (3) to transmission housing with six 12mm x 30mm cap screws (6) and 1/2 lock washers (8). Torque hardware to 62 ft. lbs.
3. Remove six 14mm x 35mm cap screws and hitch assembly (Lower three on each side).
4. Install rear subframe mounting bracket (2) with ten 14mm x 45mm cap screws (5) and 9/16 lock washers (7). Torque hardware to 103 ft. lbs.

INSTALLING SUBFRAME TO BACKHOE (Figure 1)

1. Install subframe (1) (with crosstube to bottom) to backhoe using 3/4 x 2 cap screws (10) and 3/4 lock nuts (11) in front holes and 7/8 x 3 cap screws (12), 7/8 lock washers (14) and 7/8 hex nuts (13) in rear holes.

2. Fasten support braces (4) to subframe and backhoe using 3/4 x 2.75 cap screws (9) and double nut with 3/4 lock nuts (11). Torque 3/4 grade 8 hardware to 350 ft-lbs., 3/4 grade 5 hardware to 262 ft. lbs. and 7/8 hardware to 386 ft. lbs.

NOTE: *KB1550 & KB2085 - Use rear holes in channels (Figure 1).*

MOUNTING BACKHOE TO TRACTOR (Figure 1)

1. Back tractor slowly toward backhoe, parallel to subframe assembly, until pump can be connected to tractor. **Turn off tractor, set brakes and make sure PTO is disengaged.**
2. If backhoe is equipped with its own pump connect pump to tractor PTO. Refer to pump kit instructions for proper installation procedure.

NOTE: *If using auxiliary plumbing kit to feed backhoe, connect hoses from backhoe to tractor hydraulics. Refer to instructions on pages 10-15 for proper installation procedure.*
3. Start tractor and engage PTO. Tractor should be running at low idle RPM. Using backhoe controls lower stabilizers and bucket to ground to provide a base for raising subframe. Using backhoe controls, continue lowering stabilizers and boom to raise backhoe and subframe to proper level height to connect to tractor.
4. Back tractor and position subframe so crosstube engages pocket in rear mounting bracket (2) and front of subframe engages backhoe mid mounting crosstube.
5. Install pins (15) through rear mounting bracket to secure subframe in place. Secure pins using lynch pins (16).



CAUTION: *Raising 3-point lower hitch arms when backhoe is attached could damage backhoe. Remove or disable 3-point hitch by removing lower 3-point hitch arms.*

PARTS LIST - REPAIR PARTS

| ITEM | PART NO. | DESCRIPTION | QTY. |
|------|-----------|-------------------------------------|------|
| 1 | SW49219 | SUBFRAME ASSEMBLY | 1 |
| 2 | SW47850 | BRACKET ASSEMBLY, Rear | 1 |
| 3 | SW47840 | BRACKET ASSEMBLY, Front | 1 |
| 4 | SW44836 | SUPPORT BRACE | 2 |
| 5 | SW60903 | SCREW, Cap, 14mm- 1.5 x 45mm | 10 |
| 6 | SW609025 | SCREW, Cap, 12mm- 1.25 x 30mm | 6 |
| 7 | SWG120898 | WASHER, Lock, 9/16 | 10 |
| 8 | SWG120384 | WASHER, Lock, 1/2 | 6 |
| 9 | SW429694 | SCREW, Cap, 3/4-10 x 2-3/4, Grade 8 | 4 |
| 10 | SWG223527 | SCREW, Cap, 3/4-10 x 2 | 2 |
| 11 | SW472648 | NUT, Lock, 3/4-10, Grade 8 | 10 |
| 12 | SWG271819 | SCREW, Cap, 7/8-9 x 3 | 2 |
| 13 | SWG220087 | NUT, Hex, 7/8-9 | 2 |
| 14 | SWG131047 | WASHER, Lock, 7/8 | 2 |
| 15 | SW44892 | PIN ASSEMBLY | 2 |
| 16 | SW447561 | LINCH PIN | 2 |

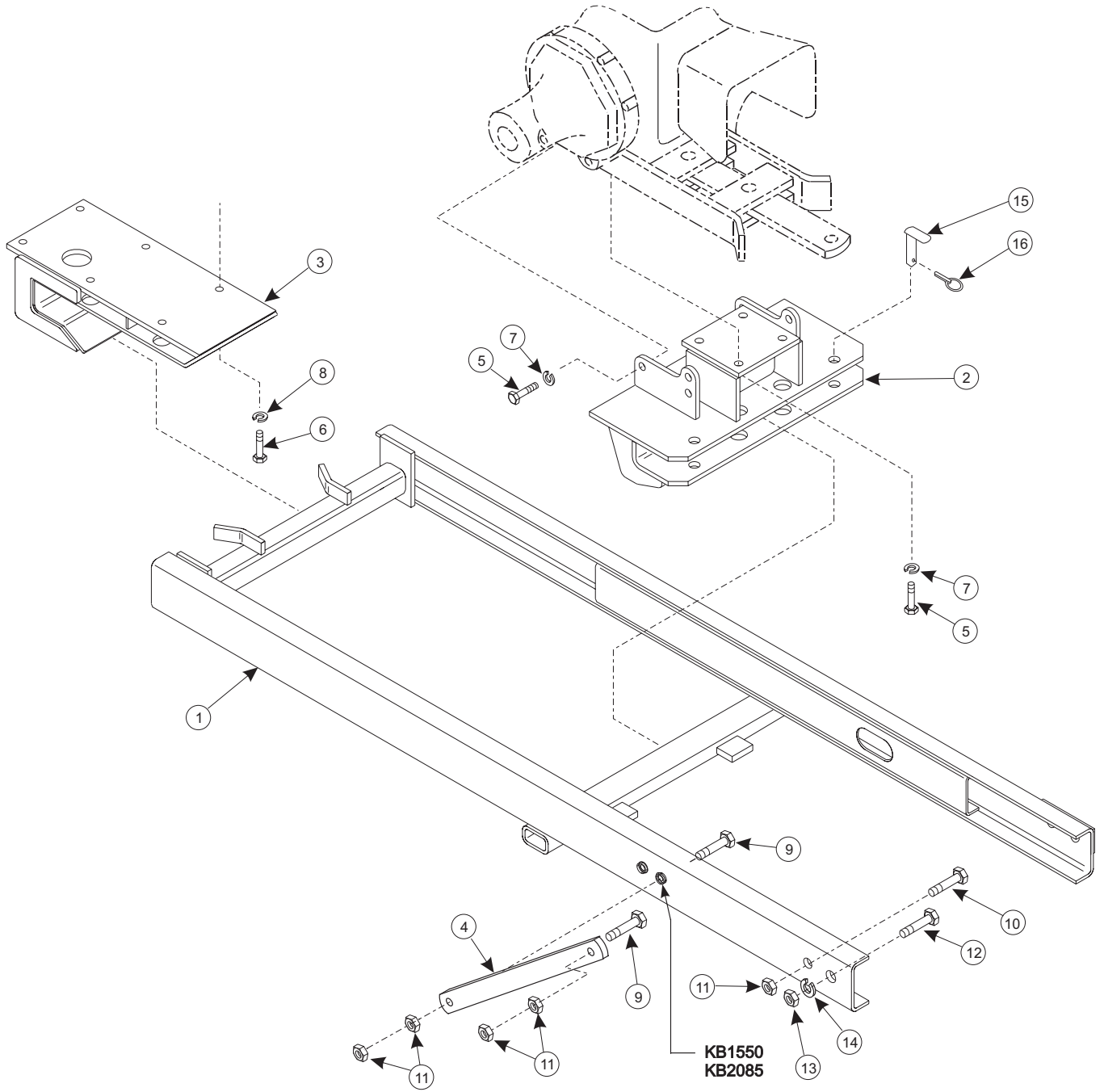


Figure 1
Subframe Assembly