

Keep With Operator's Manual

## BACKHOE MOUNTING KIT NEW HOLLAND OR CASE IH TRACTOR WITH OR LESS COMPATIBLE LOADER OR FRONT BLADE

	BACKHOE	TRACTOR	LOADER	BLADE
NEW HOLLAND	756C, 757C, 758C, 910GH, 920GH, 930GH	1320, 1520, 1620, 1715, 1530, 1630, 1725, 1925, TC25, TC29, TC29D, TC29DA, TC30, TC33, TC33D, TC33DA	14LA, 15LA, 7308	702C, 702D, 72CB
CASE IH	BHX172, BHX190, BHX1102	D25, DX25, D29, DX29, D33, DX33	L130, LX114	702C, BMX172

Subframe can be installed on tractor and backhoe using tools ordinarily available. Tractor must be equipped with loader, front blade, or equivalent front counter weight.

Complete backhoe installation requires hydraulic kit 716397016 (2-7238) or 716395001 (2-6383). Install hydraulic kit to tractor before installing backhoe to tractor. If using optional rear remote hose kit or PTO pump kit, install kit to backhoe before installing backhoe onto tractor.

**NOTE:** This subframe is not compatible with 914A or MWX mowers or standard clevis hitch on TC30 or 1715. You must order SBA370020610 swinging drawbar kit or SBA370020970 extension drawbar kit to replace clevis hitch.

### INSTALLING SUBFRAME TO BACKHOE (Figures 2 & 3)

1. Install subframe (1) (with cross tube to bottom) to backhoe using 3/4 x 3 cap screws (15) and 3/4 lock nuts (14) in front holes and 7/8 x 3-1/2 cap screws (16), 7/8 lock washers (17) and 7/8 hex nuts (18) in rear holes.
2. Fasten support braces (9) to outside of subframe and inside of backhoe frame using 3/4 x 2 cap screws (11) and 3/4 lock nuts (14) (Torque to 350 ft lbs).

910GH ONLY: Use support brace 55893 (25) and 55894 (26).

### INSTALLING MOUNTING BRACKET

1. Remove 16mm cap screws which secure hitch to underside of tractor.

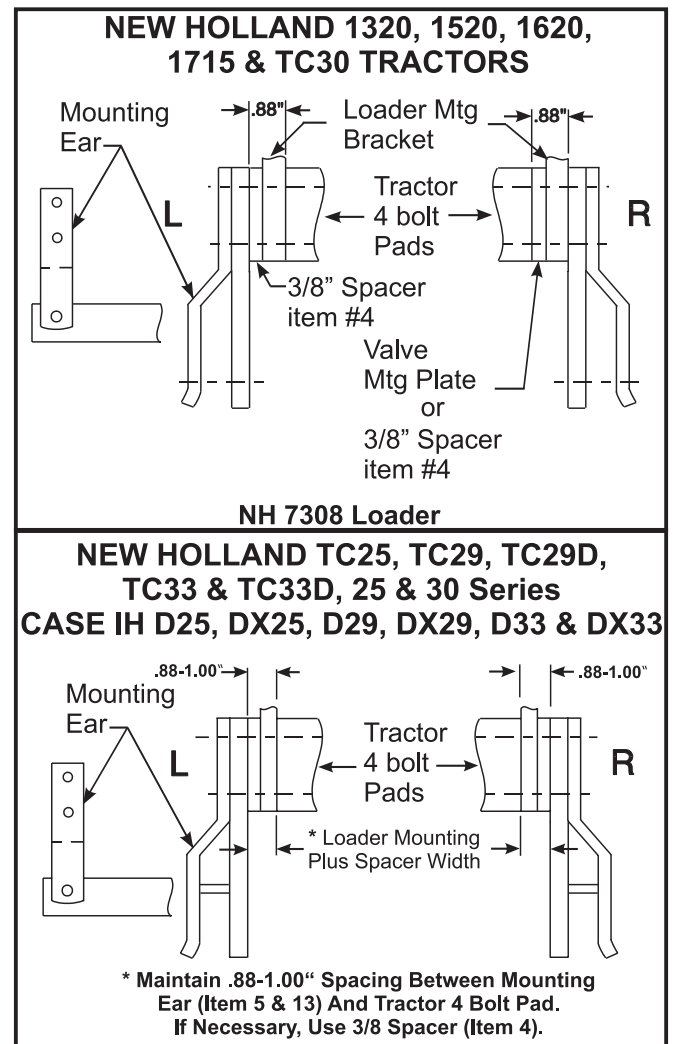
**NOTE:** It may be necessary to support hitch assembly when 16mm cap screws are removed.

**NOTE:** For 756C or BHX172 backhoe, use front set of mounting holes for braces. If using older subframe, drill 25/32 holes as shown (Figures 2 & 3).

2. Install side supports (2) to rear mounting bracket (3) using 1/2 x 1-1/2 cap screws (20) and 1/2 lock nuts

(21). Leave hardware loose. Attach side supports to axle housing using 12mm x 30mm cap screws (19) and 1/2 lock washers (22).

**NOTE:** If tractor is equipped with fabricated (welded, non-cast steel) swinging drawbar hitch bracket, install spacers (24), except 1725 & 1925 tractors. It may be necessary to locate drawbar to shortest position to clear backhoe swing cylinders (see Figure 3 on page 4).



**Figure 1**  
**Installing Mounting Ears**

**INSTALLING MOUNTING BRACKET (Continued)**

3. Install mounting bracket (3) in rear mounting holes using 16mm x 50mm cap screws and original lock washers and front mounting holes using 16mm x 100mm cap screws and original lock washers.
4. Remove two rear cap screws which secure loader mid mounting brackets to tractor.
5. Install mounting ears (5 & 13) to rear most bolt holes in clutch housing using spacers (4) (if required), 16mm x 80mm cap screws (6) and 5/8 lock washers (23). Right mounting ear has hose holder bracket. Refer to Figure 1 for proper spacing on different tractor models. Torque all bolts to specifications in general torque specifications table.
6. Reinstall clevis pins for swinging drawbar with split rings on top.

**MOUNTING BACKHOE TO TRACTOR (Figure 3)**

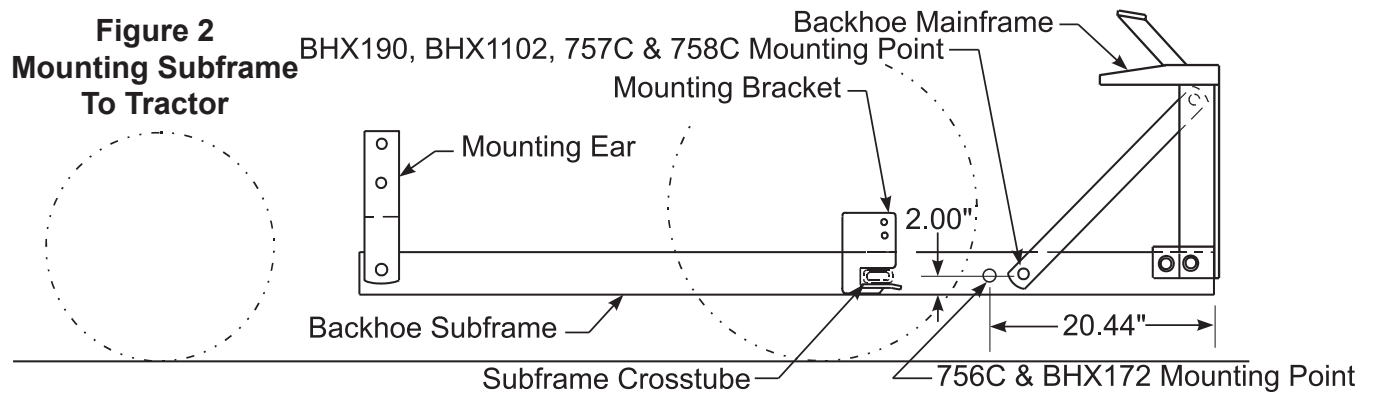
1. Back tractor slowly toward backhoe, parallel to subframe assembly, until hoses can be connected to tractor. Adjust 3-point lift arms to level position. Shut off tractor engine.
2. Connect hoses to tractor hydraulics. Make sure connections are complete at couplers.
3. Using backhoe controls, extend dipperstick and lower stabilizers and bucket to ground to provide a base for raising subframe. Using backhoe controls, raise subframe to proper height to connect to tractor.
4. Position 3-point hitch arms inside subframe support braces.
5. Back tractor and position subframe so cross tube engages pocket in rear mounting bracket (3) and holes in front of subframe align with front mounting ears (5 & 13). Install 3/4 pins (7) and linch pins (8).

**NOTE:** After backhoe is mounted, swing backhoe full right and full left to be sure there is not interference between swing cylinders or 3-point hitch arms or draw bar.

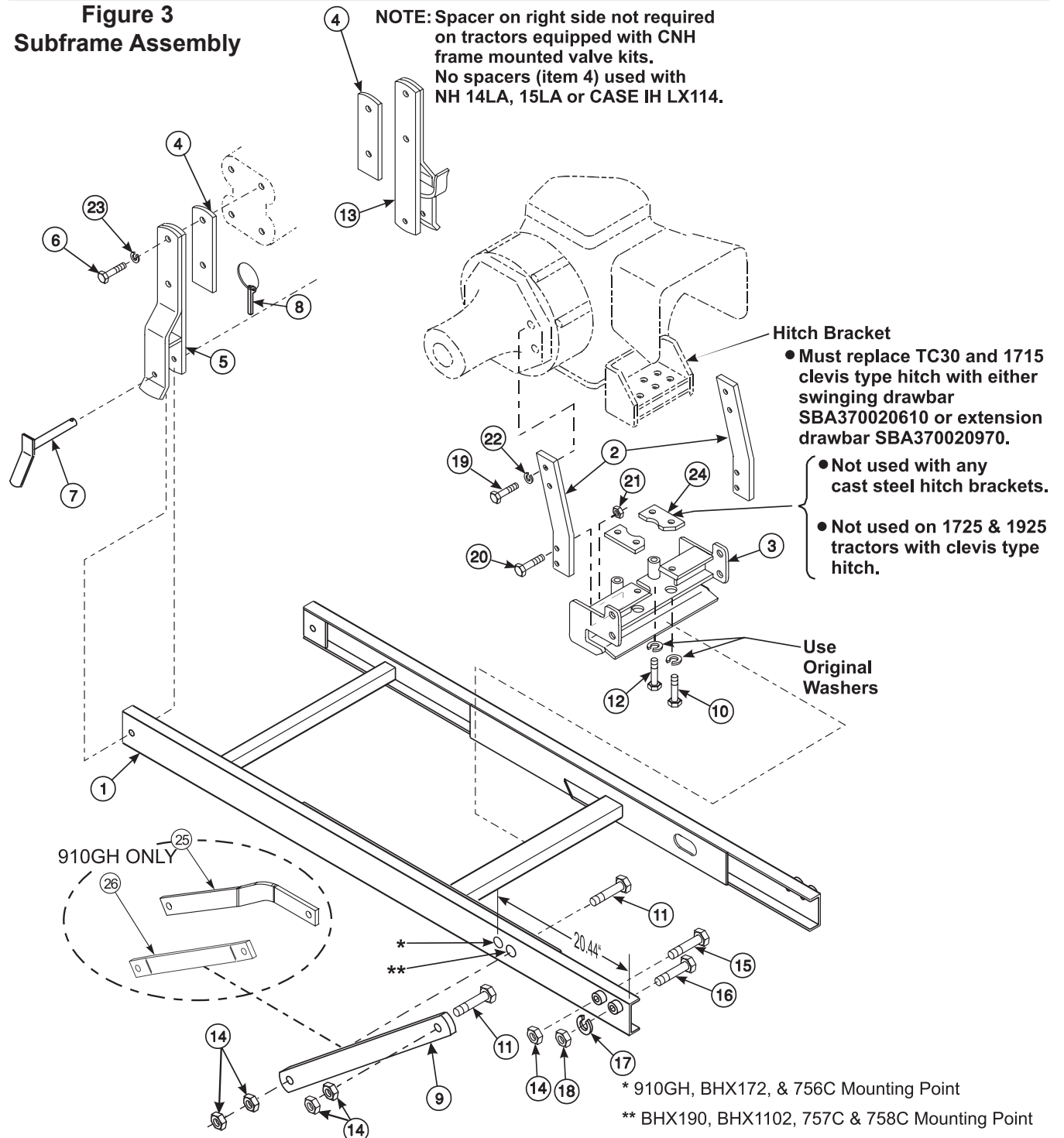
**PARTS LIST – SUBFRAME MOUNTING KIT**

Item	Part No.	Description	Qty.
1	44854	SUBFRAME, Backhoe	1
2	44941	FLAT, Support	2
3	44946	BRACKET, Mounting	1
4	44886-1	SPACER, 3/8"	2
5	44877	EAR, Mounting - Left	1
6	42672-77	SCREW, Cap, 16mm-2.0mm x 80mm	4
7	44892	PIN	2
8	44756-1	LINCH PIN	2
9	44836	BRACE	2
10	42672-12	SCREW, Cap, 16mm-2.0mm x 50mm Class 8.8	2
11	42969-4	SCREW, Cap, 3/4-10 x 2-3/4 Gr. 8 (Torque to 350 ft lbs)	4
12	42672-40	SCREW, Cap, 16mm -2.0mm x 100mm Class 8.8	2
13	44965	EAR, Mounting - Right	1
14	47264-8	NUT, Lock, 3/4-10 Gr. C (Torque to 350 ft lbs)	10
15	41838-55	SCREW, Cap, 3/4-10 x 3 Grade 5	2
16	41838-56	SCREW, Cap, 7/8-9 x 3-1/2 Grade 5	2
17	41837-9	WASHER, Lock, 7/8"	2
18	41840-9	NUT, Lock, 7/8-9	2
19	42672-19	SCREW, Cap, 12mm-1.75mm x 30mm Class 8.8	4
20	41838-33	SCREW, Cap, 1/2-13 x 1-1/2 Grade 5	4
21	41840-5	NUT, Lock, 1/2-13 Type N	4
22	41837-5	WASHER, Lock, 1/2"	4
23	41837-7	WASHER, Lock, 5/8"	8
24	44950	SPACER (Not used on 25 series with clevis type hitch or cast steel hitch brackets)	2
25	55893	SUPPORT BRACE, Left	1
26	55894	SUPPORT BRACE, Right	1

**Figure 2**  
Mounting Subframe  
To Tractor



**Figure 3**  
Subframe Assembly



### GENERAL TORQUE SPECIFICATIONS

USE THE FOLLOWING TORQUES WHEN SPECIAL TORQUES ARE NOT GIVEN

#### Standard American and Metric Cap Screws

AMERICAN STANDARD CAP SCREWS										METRIC CAP SCREWS									
SAE Grade	5					8				Metric Class	8.8				10.9				
Typ. Head Markings										Typ. Head Markings									
Cap Screw	TORQUE					TORQUE				Cap Screw	TORQUE				TORQUE				
Size	FT·LBS		N·m			FT·LBS		N·m		Size	FT·LBS		N·m		FT·LBS		N·m		
Inches	MIN	MAX	MIN	MAX	MIN	MAX	MIN	MAX	Millimeters	MIN	MAX	MIN	MAX	MIN	MAX	MIN	MAX		
1/4 - 20	6.25	7.25	8.5	10	8.25	9.5	11	13	M6 x 1.00	6	8	8	11	9	11	12	15		
1/4 - 28	8	9	11	12	10.5	12	14	16	M8 x 1.25	16	20	21.5	27	23	27	31	36.5		
5/16 - 18	14	15	19	20	18.5	20	25	27	M10 x 1.50	29	35	39	47	42	52	57	70		
5/16 - 24	17.5	19	23	26	23	25	31	34	M12 x 1.75	52	62	70	84	75	91	102	123		
3/8 - 16	26	28	35	38	35	37	47.5	50	M14 x 2.00	85	103	115	139	120	146	163	198		
3/8 - 24	31	34	42	46	41	45	55.5	61	M16 x 2.50	130	158	176	214	176	216	238	293		
7/16 - 14	41	45	55.5	61	55	60	74.5	81	M18 x 2.50	172	210	233	284	240	294	325	398		
7/16 - 20	51	55	69	74.5	68	75	92	102	M20 x 2.50	247	301	335	408	343	426	465	577		
1/2 - 13	65	72	88	97.5	86	96	116	130	M22 x 2.50	332	404	450	547	472	576	639	780		
1/2 - 20	76	84	103	114	102	112	138	152	M24 x 3.00	423	517	573	700	599	732	812	992		
9/16 - 12	95	105	129	142	127	140	172	190	M27 x 3.00	637	779	863	1055	898	1098	1217	1488		
9/16 - 18	111	123	150	167	148	164	200	222	M30 x 3.00	872	1066	1181	1444	1224	1496	1658	2027		
5/8 - 11	126	139	171	188	168	185	228	251	<p><b>NOTE:</b> These values apply to fasteners as received from supplier, dry or when lubricated with normal engine oil. They do not apply if special graphite or moly sulphide greases or other extreme lubricants are used.</p>										
5/8 - 18	152	168	206	228	203	224	275	304											
3/4 - 10	238	262	322	355	318	350	431	474											
3/4 - 16	274	305	371	409	365	402	495	544											
7/8 - 9	350	386	474	523	466	515	631	698											
7/8 - 14	407	448	551	607	543	597	736	809											
1 - 8	537	592	728	802	716	790	970	1070											
1 - 14	670	740	908	1003	894	987	1211	1337											

#### 37° JIC Fittings

Size	Thread Size	Assembly Torque		Tube Connection F. F. F. T.	Swivel Nut or Hose Connection F. F. F. T.
		in.·lb.	ft.·lb.		
-4	7/16 - 20	140 ± 10	12 ± 1	2	2
-5	1/2 - 20	180 ± 15	15 ± 1	2	2
-6	9/16 - 18	250 ± 15	21 ± 1	1 1/2	1 1/4
-8	3/4 - 16	550 ± 25	45 ± 5	1 1/2	1
-12	1 1/16 - 12	1000 ± 50	85 ± 5	1 1/4	1
-16	1 5/16 - 12	1450 ± 50	120 ± 5	1	1
-20	1 5/8 - 12	2000 ± 100	170 ± 10	1	1
-24	1 7/8 - 12	2400 ± 150	200 ± 15	1	1
-32	2 1/2 - 12	3200 ± 200	270 ± 20	1	1

#### O-Ring Face Seal Tube/ Hose Swivel Nut

Metric Tube O.D. (mm)	Dash Size	Thread Size (in.)	Swivel Nut Hex Size (in.)	Swivel Nut Torque	
				N·m	lb·ft
5	-3	--	--	--	--
6	-4	9/16 - 18	11/16	16	12
8	-5	--	--	--	--
10	-6	11/16 - 16	13/16	24	18
12	-8	13/16 - 16	15/16	50	37
16	-10	1 - 14	1-1/8	69	51
20	-12	1-3/16 - 12	1-3/8	102	75
22	-14	1-3/16 - 12	--	102	75
25	-16	1-7/16 - 12	1-5/8	142	105
32	-20	1-11/16 - 12	1-7/8	190	140
38	-24	2 - 12	2-1/4	217	160
50.8	-32	--	--	--	--

#### SAE O-Ring Fittings

Size	Swivel Nut or Hose	Assembly Torque		F. F. F. T.
		in.·lb.	ft.·lb.	
2	5/16 - 24	90 ± 5	7.5 ± 0.5	1 ± .25
3	3/8 - 24	170 ± 10	14 ± 1	1 ± .25
4	7/16 - 20	220 ± 15	18 ± 1	1 ± .25
5	1/2 - 20	260 ± 15	22 ± 1	1 ± .25
6	9/16 - 18	320 ± 20	27 ± 2	1.5 ± .25
8	3/4 - 16	570 ± 25	48 ± 2	1.5 ± .25
10	7/8 - 14	1060 ± 50	90 ± 5	1.5 ± .25
12	1 1/16 - 12	1300 ± 50	110 ± 5	1.5 ± .25
14	1 3/16 - 12	1750 ± 75	145 ± 6	1.5 ± .25
16	1 5/16 - 12	1920 ± 125	160 ± 6	1.5 ± .25
20	1 5/8 - 12	2700 ± 150	225 ± 12	1.5 ± .25
24	1 7/8 - 12	3000 ± 150	250 ± 12	1.5 ± .25
32	2 1/2 - 12	3900 ± 200	325 ± 15	1.5 ± .25

# INSTALLATION INSTRUCTIONS