

Keep with Operator's Manual

QUICK ATTACH DEVICE SKID STEER ATTACHMENT COMPATIBLE

Quick attach device can be installed using tools ordinarily available.

Unless otherwise specified, tighten all hardware to torques specified in General Torque Specifications table in loader operator's manual.

Loader must be mounted on tractor and supported during installation of quick attach device. Shut off tractor engine and engage the tractor brakes during installation.

Only quick attach, skid steer compatible attachments can be used with the quick attach device. Pin on style attachments can be used on the loader, but necessitate removal of the quick attach device four-bar linkage and relocation of the bucket level indicator.

All references to left and right used in these instructions are as they would appear to the operator standing at the rear of the unit facing forward.

REMOVING SHIPPING MATERIALS FROM QUICK ATTACH DEVICE (Figure 1A)

1. Unband quick attach device (1) and wood blocks.
2. Disassemble four-bar linkage by removing and discarding cotter pins and shipping tubes.

INSTALLING QUICK ATTACH DEVICE ONTO LOADER (Figure 1 & 2)



WARNING: Always use a drift and hammer made of non-sparking material (a shot-filled mallet is recommended) to install or remove pins. A steel hammer or drift could generate flying metal fragments and result in injury. Always wear safety glasses when using a hammer to remove or install pins.

1. Temporarily remove parking stands from underside of boom, retaining attaching hardware for re-use.

NOTE: 1-1/4" diameter parking stand rotation pins will not be reused in quick-attach applications, however they are required to attach loader parking stands if quick attach bracket is removed for pin-on attachment applications.

2. Fasten quick attach device (1) to lower boom arms using 1-1/2 x 5-7/8 attachment pins (22), 3/8 x 2-1/2 cap screws, and 3/8 lock nuts (supplied with loader). See figure 2.

3. Fasten four-bar link (17) to quick attach frame (1) using 1-1/4 x 5-7/8 attachment pins (23), 3/8 x 2-1/2 cap screws, and 3/8 lock nuts (supplied with loader).

4. Attach four-bar linkages (14 & 15) through hub on underside of loader boom, through four-bar link (17) and through hub on rod end of tilt cylinder, as shown in figure 2.

NOTE: Four-bar linkages (14 & 15) must be installed from the outside of the loader, **with longer leg of four-bar linkage attached to hub on rod end of tilt cylinder (see figure 2).** (Longer pins of four-bar linkages to hubs on underside of loader boom arms.)

5. Attach attachment level indicator rod (supplied with loader), to inside of right four-bar linkage (15) and lug plate (16), as shown.
6. Using 1-1/4 washers (19) on all linkage pins other than pin securing attachment level indicator rod, secure lug plates (16) to four-bar linkages (14 & 15) using 3/8 x 2 spring pins (18).
7. Reinstall loader parking stands onto four-bar linkage pins on underside of loader boom arms, using original hardware.
8. When assembly is complete, apply grease to all grease fittings (20) in linkage pins and to pivot link shaft (13) and pin. Refer to figures 1 & 2A.

MOUNTING ATTACHMENT ONTO LOADER (Figure 1 & 2)



WARNING: To avoid injury during installation of the loader attachment, do not allow bystanders within 10 feet of loader or attachment.

1. Locate tractor and attachment on level ground. Lower boom to rest on the ground. Extend the bucket cylinders slightly, while raising the boom to provide three to five inches of ground clearance, drive the tractor ahead slowly toward the attachment, aligning the loader quick attach device as shown in figure 2.

NOTE: To help guide loader quick attach device into attachment, reflective alignment marking tape has been applied to back of attachment as shown.

MOUNTING ATTACHMENT TO LOADER (Cont.) (Figure 1 & 2)

2. While driving tractor ahead slowly to maintain contact with attachment, activate lift cylinders to raise loader until the quick attach engages under attachment lip.
3. Activate bucket cylinders to retract, continuing to roll the attachment back completely.
4. Place tractor in neutral, set parking brake, shut off tractor. Move latch pin handles to latch (down) position (refer to figure 2).
5. Start tractor and activate lift cylinders to raise attachment one or two feet off ground and extend bucket cylinders to tilt attachment at a slight downward angle, so quick attachment latch pins are visible. Visually inspect the attachment mechanism to verify that the pins are engaged through the latch plate on the back of the attachment.

NOTE: If the attachment is not securely attached, follow the instructions for detaching it and repeat the above procedure.

DISMOUNTING ATTACHMENT FROM LOADER (Figure 1 & 2)



WARNING: To avoid injury during installation/removal of the loader attachment, do not allow bystanders within 10 feet of loader or attachment.

1. Locate tractor and loader on level ground.
2. Lower boom arms until the attachment is level and resting on ground.
3. Place tractor in neutral, set parking brake, shut off tractor engine and disengage quick attach device latch pins by moving handles to unlatch position (refer to figure 2).
4. Start tractor engine, release brake and extend bucket cylinders while slowly backing the tractor away from attachment, until quick attach disengages from attachment.

PARTS LIST - QUICK ATTACH DEVICE (Figures 1 & 2)

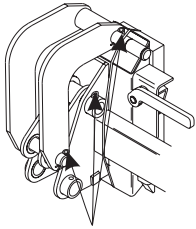
Item	Part No.	NH No.	Description	Qty.
*1	50533	SML50533	MAIN FRAME, Quick Attach	1
*2	G9413315	SMLG9413315	SPRING PIN, 1/4 x 1-1/2	2
*3	47615	SML47615	PIVOT LINK	2
*4	48687	SML48687	LATCH PIN	2
*5	47614	SML47614	SPRING	2
*6	47618	SML47618	SPADE BOLT	2
*7	47526	SML47526	SPRING GUIDE	2
*8	47394	SML47394	PIVOT PIN	2
*9	6543-7	SML65437	JAM NUT, 1/2	2
*10	41903-1	86523956	COTTER PIN, 5/32 x 1	2
*11	47408-1	SML474081	DISC SPRING	2
*12	41902-14	SML4190214	CLEVIS PIN 3/8 x 1-3/8	2
*13	6075-4	80714	FITTING, Grease, 1/4-28	4
14	50515-1	SML505151	LINKAGE, Four-Bar, Left	1
15	50515-2	SML505152	LINKAGE, Four-bar, Right	1
16	50512	SML50512	LUG, Four-Bar	2
17	50510	SML50513	LINK, Four-Bar	2
18	6015-2	86581648	SPRING PIN, 3/8 x 2 (Loose in instruction bag.)	4
19	42577-8	SML425778	WASHER, Flat, 1-1/4 (Loose in instruction bag.)	3
**20	6075-2	80710	FITTING, Grease, 1/8-27 (4 fittings furnished with loader)	8
*21	48686	SML48686	HANDLE, Quick Attach	2
**22	50480	SML50480	PIN, 1-1/2 x 5.88	4
**23	46704	86581650	PIN, 1-1/4 x 5.88	2
**24	41838-54	87936	SCREW, Cap, 3/8-16 x 2-1/4	4
**25	41840-3	9637692	NUT, Lock, 3/8-16	4
26	46979-1	86582385	TAPE, Reflective, Alignment, White, 14" (Loose in instruction bag.)	4

* Preassembled items.

** Items furnished with basic loader.

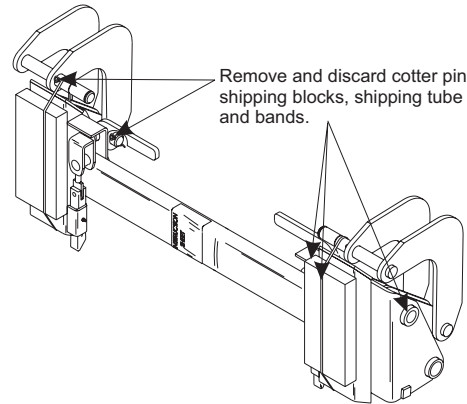
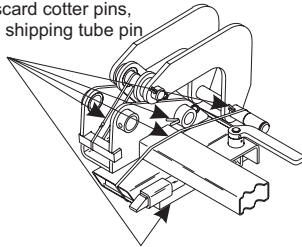
NOTE: FOUR-BAR LINKAGE PICTURED HERE HAS BEEN REVERSED FOR SHIPMENT ONLY. BE SURE THAT FOUR-BAR LINKAGE IS ASSEMBLED AS ILLUSTRATED IN FIGURE 2, PAGE 4.

Figure 1A

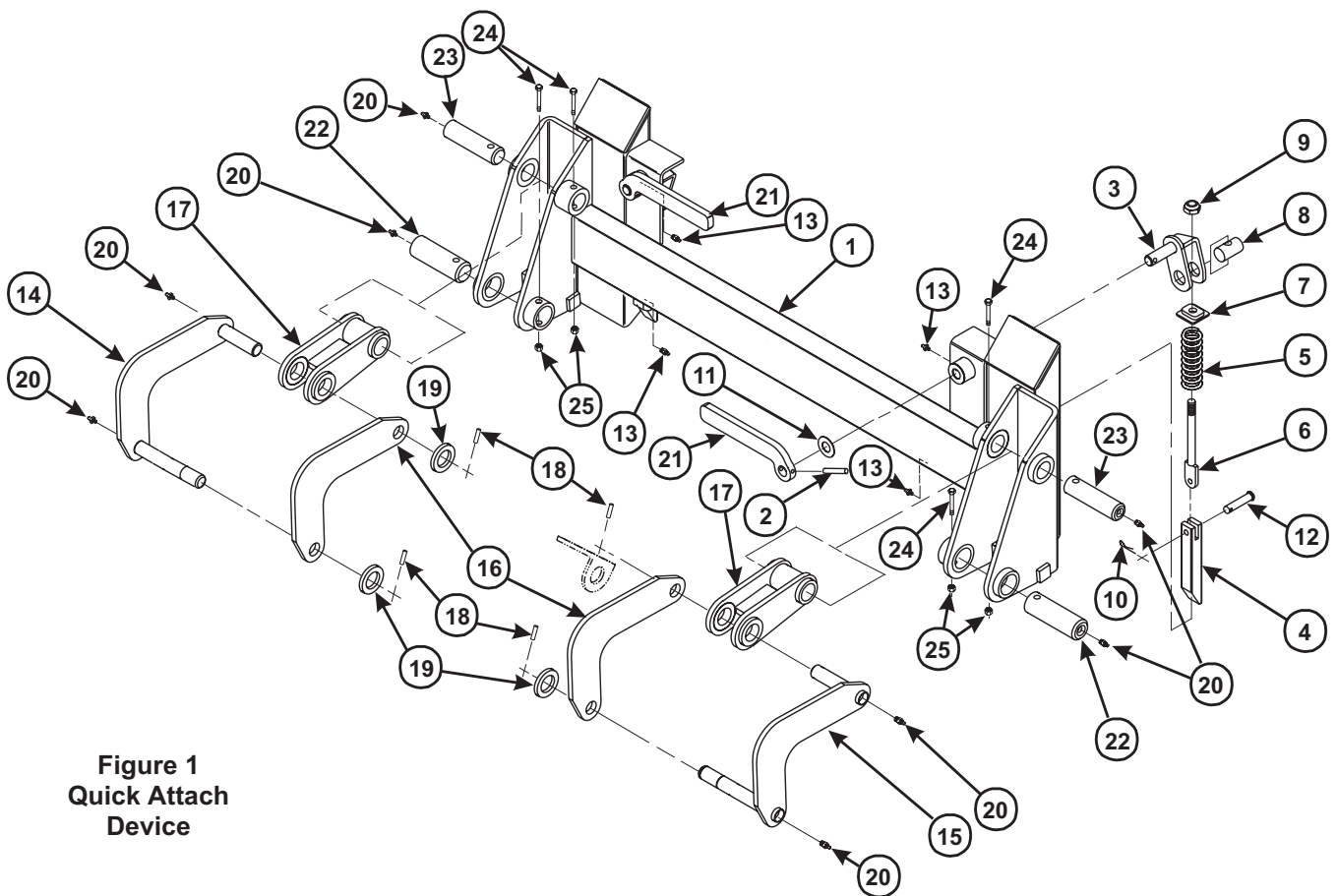


Remove and discard cotter pin, shipping blocks and shipping tube pin. Disassemble linkage.

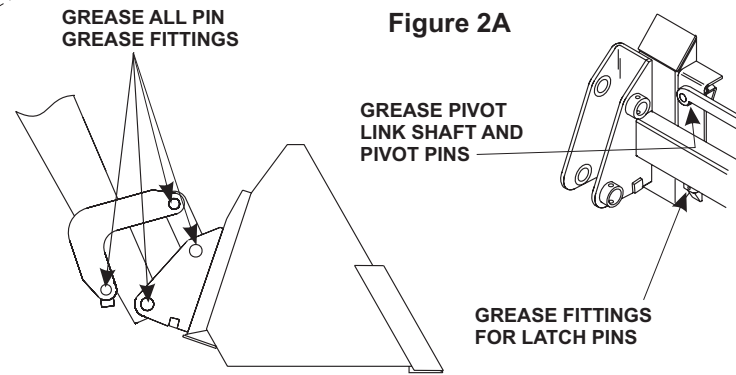
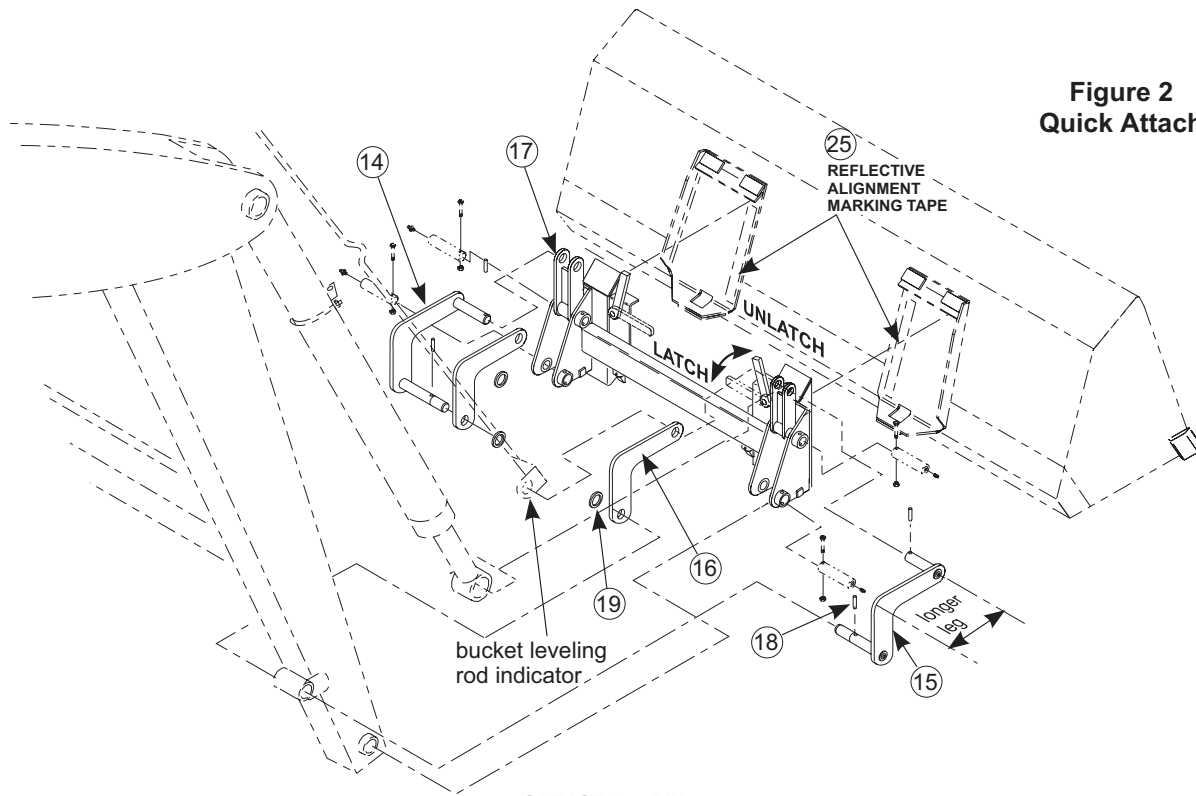
Remove and discard cotter pins, shipping blocks, shipping tube pin and bands.



Remove and discard cotter pins, shipping blocks, shipping tube pin and bands.



**Figure 1
Quick Attach
Device**



INSTALLATION INSTRUCTIONS