

Keep with Operator's Manual

## LOADER MOUNTING KIT 2409 LOADER NEW HOLLAND TRACTORS

MODEL	2WD	FWA	ROPS	SOFT CAB
2120 After S/N UV32236	X	X	X	X
3415	X	X	X	X

### TRACTOR AND MOUNTING KIT GENERAL INFORMATION

Mounting kit can be installed on tractor using tools ordinarily available.

**IMPORTANT:** *This mounting kit is compatible with vertical exhaust only. Mounting kit is not compatible with front weights. If tractor is equipped with front weights, they must be removed before mounting loader. It is not necessary to remove front weight bracket.*

**NOTE:** *If installing optional grille guard (2-6225), install grille guard and front mounting bracket (1, Figure 1) at same time.*

Check tire clearances when loader installation is complete and adjust tread width as necessary to provide adequate clearance.

Shut off tractor engine and engage parking brakes during installation.

### INSTALLING LOADER MOUNTING BRACKETS (Figure 1)

**NOTE:** *Install all attaching hardware loosely (unless noted otherwise) until mounting kit is completely assembled to facilitate assembly and proper alignment. Tighten all hardware to torques specified in general torque specifications table.*

1. Attach front mounting bracket (1) to sides of tractor front frame using 1/2 x 2" cap screws (10) and lock nuts (14).
2. Support tractor auxiliary valve and bracket and remove four 16mm cap screws which secure valve bracket (A) to mounting pad on right side of tractor clutch housing. Support right side of tractor engine and front frame and remove five 14mm cap screws from tractor frame and engine casting ahead of mounting pad.
3. With valve bracket sandwiched between, fasten right mid mounting bracket (3) to tractor clutch housing using four 16mm x 50 mm cap screws (8) and 5/8" lock washers (11), and with tractor front frame to engine block using five 14mm x 55mm cap screws (9) and 9/16" lock washers (12).

4. Support left side of tractor engine and front frame and remove five 14mm cap screws from tractor frame ahead of mounting pad.
5. Fasten left mid mounting bracket (2) and spacer plate (6) to tractor clutch housing using four 16mm x 50 cap screws (8) and 5/8" lock washers (11) and with tractor front frame to engine block using five 14mm x 55mm cap screws (9) and 9/16" lock washers (12).

**NOTE:** *Tighten 16mm cap screws (8) to 130-158 ft.·lbs. of torque. Tighten 14mm cap screws (9) to 85-103 ft.·lbs. of torque.*

### MOUNTING LOADER ONTO TRACTOR AND MOUNTING BRACKETS

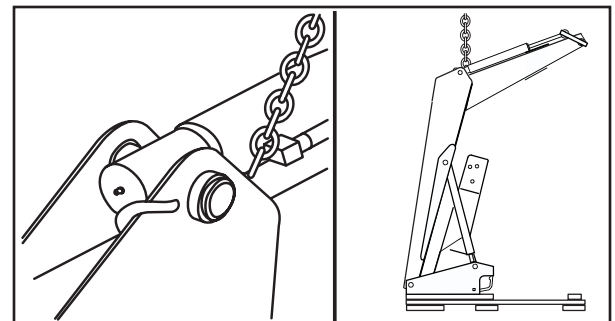


**WARNING:** *To avoid injury during installation of quick attach loader, do not permit bystanders within ten feet of loader or tractor.*

1. Loop chain under each lift cylinder and hook on loader boom arm. Using overhead hoist to support loader, remove hardware securing loader to pallet. Lift loader and remove pallet.

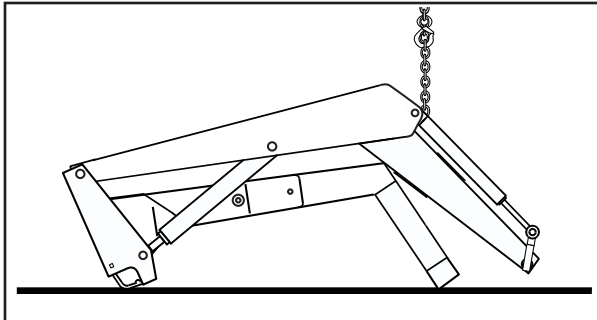


**CAUTION:** *Do not damage grease fitting on end of cylinder. Be sure chain does not pinch lift cylinder.*

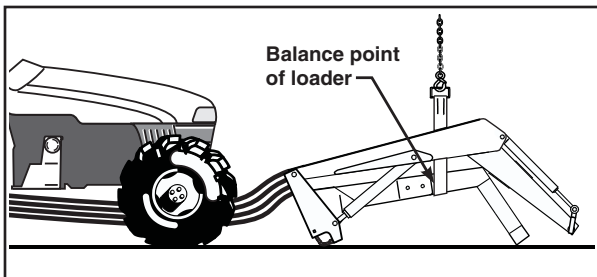


2. Using overhead hoist, lower loader from vertical shipping position to horizontal position, leaving enough room to install yoke. (Scraps of cardboard may be used to protect paint.) Fasten yoke assembly (4) to loader side frames using 3/4 x 2-1/2" cap screws (7) and lock nuts (13).

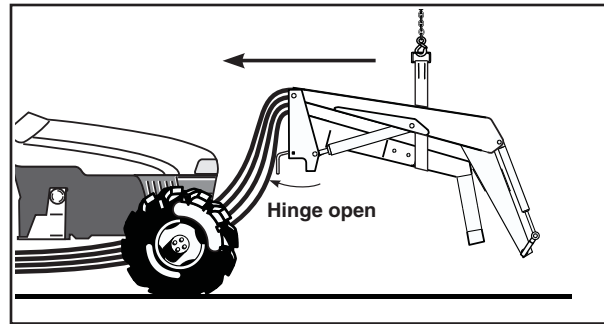
**NOTE:** Hardware connecting yoke to loader side frames should be snug, but do not tighten completely. After loader has been mounted to tractor and aligned with mid mounting brackets and front mounting bracket, tighten 3/4-10 Grade 5 hardware to 238-262 ft.·lbs. of torque.



3. Install hose or valve kit to tractor and loader. Refer to instructions provided with hose or valve kit.
4. Reposition overhead hoist by looping nylon strap around yoke near loader side frames at balance point of loader.



5. Using overhead hoist, raise loader until side frame uprights will clear front tires. Remove lock nut and washer from loader hinge and swing each hinge open.



6. Position loader so hinges hook over mid mounting tubes and yoke tube fits inside of front mounting bracket.
7. Clamp hinges to mid mounting tubes with 3/4" flat washers and 3/4" flex-lock nuts (supplied with loader).

**IMPORTANT:** Be sure to use flex-lock nuts to clamp hinge. Tighten flex-lock nuts against hinge securely, but not to more than 125 ft.·lbs. of torque.

8. Adjust front wheel tread or steering stops, if necessary, to prevent interference between tires and loader. Refer to tractor operator's manual for adjustment procedures.

**PARTS LIST – LOADER MOUNTING KIT**

Item	Part No.	Description	Qty.
1	50060	BRACKET, Mounting, Front	1
2	50063	BRACKET, Mounting, Mid, Left	1
3	50062	BRACKET, Mounting, Mid, Right	1
4	44124	BRACKET, Front Yoke	1
5	39240	DECAL, WARNING: Do Not Use For Towing	2
6	43124	SPACER, Plate, Left	1
7	41838-15	SCREW, Cap, 3/4-10 x 2-1/4", Grade 5	4
8	42672-12	SCREW, Cap, 16mm-2.00 x 50mm Class 8.8	8
9	42672-22	SCREW, Cap, 14mm-1.50 x 55mm Class 8.8	10
10	41838-13	SCREW, Cap, 1/2-13 x 2" Grade 5	6
11	41837-7	WASHER, Lock, 5/8"	8
12	41837-6	WASHER, Lock, 9/16"	10
13	41840-8	NUT, Lock, 3/4-10, Type N	4
14	41840-5	NUT, Lock, 1/2-13, Type N	6

**NOTE:** Support tractor engine and front frame and remove five cap screws, one side at a time, to fasten mid mounting brackets (2 & 3) to tractor front frame and engine block.

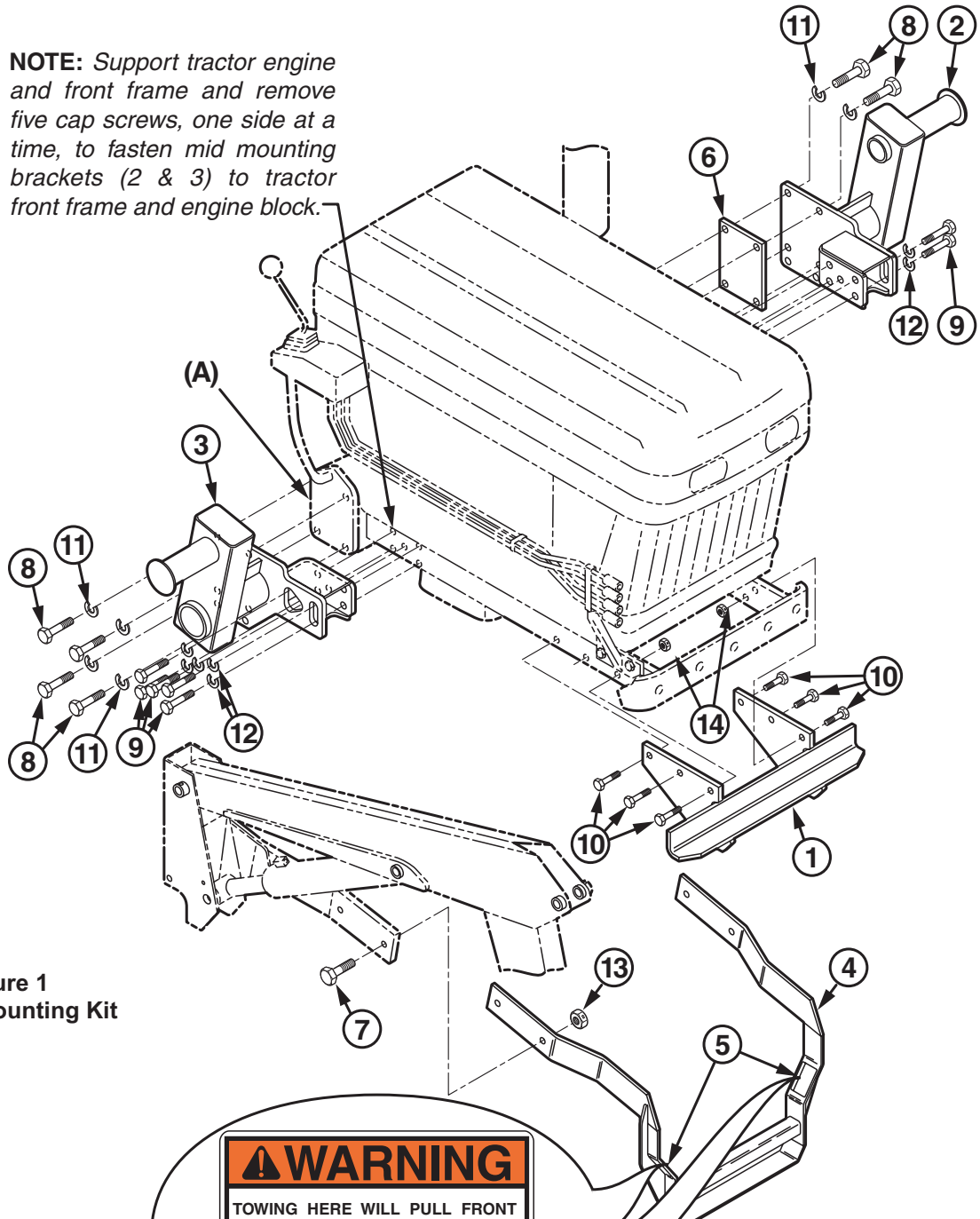


Figure 1  
Loader Mounting Kit

**⚠ WARNING**

TOWING HERE WILL PULL FRONT  
LOADER SUPPORT OUT OF POCKET  
CAUSING DAMAGE AND POSSIBLE  
INJURY.

**DO NOT USE FOR TOWING**

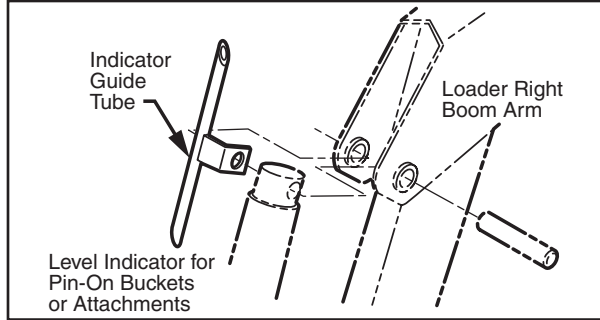
39240

**INSTALLING BUCKET OR ATTACHMENT**

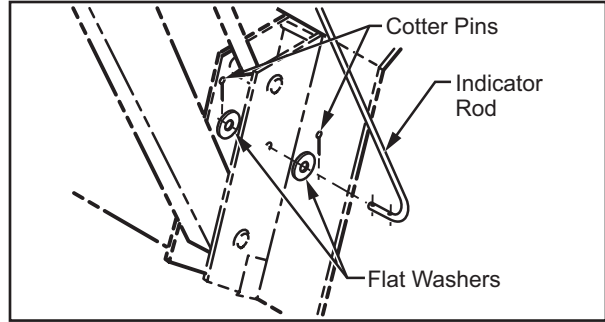
Refer to instructions provided with bucket or attachment to install.

**INSTALLING LEVEL INDICATOR**

1. Attach indicator guide tube to cylinder pin. Guide tube is positioned to outside of boom.



2. Slide level indicator rod through guide tube. Attach other end of rod with 1/8 x 1" cotter pins and 3/8" flat washers.



3. Locate tractor and loader on level surface. With bottom of bucket resting on surface, cut off excess rod flush with end of guide tube or paint exposed rod a contrasting color.

**GENERAL TORQUE SPECIFICATIONS**

USE THE FOLLOWING TORQUES WHEN SPECIAL TORQUES ARE NOT GIVEN

**Standard American and Metric Cap Screws**

AMERICAN STANDARD CAP SCREWS									METRIC CAP SCREWS										
5					8				8.8					10.9					
Typ. Head Markings					Typ. Head Markings				Typ. Head Markings					Typ. Head Markings					
TORQUE					TORQUE				TORQUE					TORQUE					
Size		FT-LBS		N-m	Size		FT-LBS		N-m	Size		FT-LBS		N-m	Size		FT-LBS		N-m
Inches	MIN	MAX	MIN	MAX	MIN	MAX	MIN	MAX	MIN	MAX	Millimeters	MIN	MAX	MIN	MAX	MIN	MAX	MIN	MAX
1/4 - 20	6.25	7.25	8.5	10	8.25	9.5	11	13			M6 x 1.00	6	8	8	11	9	11	12	15
1/4 - 28	8	9	11	12	10.5	12	14	16			M8 x 1.25	16	20	21.5	27	23	27	31	36.5
5/16 - 18	14	15	19	20	18.5	20	25	27			M10 x 1.50	29	35	39	47	42	52	57	70
5/16 - 24	17.5	19	23	26	23	25	31	34			M12 x 1.75	52	62	70	84	75	91	102	123
3/8 - 16	26	28	35	38	35	37	47.5	50			M14 x 2.00	85	103	115	139	120	146	163	198
3/8 - 24	31	34	42	46	41	45	55.5	61			M16 x 2.50	130	158	176	214	176	216	238	293
7/16 - 14	41	45	55.5	61	55	60	74.5	81			M18 x 2.50	172	210	233	284	240	294	325	398
7/16 - 20	51	55	69	74.5	68	75	92	102			M20 x 2.50	247	301	335	408	343	426	465	577
1/2 - 13	65	72	88	97.5	86	96	116	130			M22 x 2.50	332	404	450	547	472	576	639	780
1/2 - 20	76	84	103	114	102	112	138	152			M24 x 3.00	423	517	573	700	599	732	812	992
9/16 - 12	95	105	129	142	127	140	172	190			M27 x 3.00	637	779	863	1055	898	1098	1217	1488
9/16 - 18	111	123	150	167	148	164	200	222			M30 x 3.00	872	1066	1181	1444	1224	1496	1658	2027
5/8 - 11	126	139	171	188	168	185	228	251											
5/8 - 18	152	168	206	228	203	224	275	304											
3/4 - 10	238	262	322	355	318	350	431	474											
3/4 - 16	274	305	371	409	365	402	495	544											
7/8 - 9	350	386	474	523	466	515	631	698											
7/8 - 14	407	448	551	607	543	597	736	809											
1 - 8	537	592	728	802	716	790	970	1070											
1 - 14	670	740	908	1003	894	987	1211	1337											

**NOTE:** These values apply to fasteners as received from supplier, dry or when lubricated with normal engine oil. They do not apply if special graphite or moly sulphide greases or other extreme lubricants are used.

# INSTALLATION INSTRUCTIONS