

Keep With Operator's Manual

## LOADER MOUNTING KIT 5211 LOADER AGCO 70 & 85 HP TRACTORS

MODEL	2WD	4WD	LESS CAB	WITH CAB
ALLIS 8745/8765	X	X	X	X
WHITE 6410/6510	X	X	X	X
AGCO LT70/LT85	X	X	X	X

\*Loader mount kit for 1999 + tractors with cummings engine starting serial plate K-----. Mounting kit can be installed using tools ordinarily available. **NOT FRONT FENDER COMPATIBLE.**

**NOTE:** If tractor is to have a loader mounting kit and auxiliary valve kit, install mounting kit first.

### PREPARING TRACTOR

Shut off engine and engage brakes & remove key during installation.

Check front tire clearance once loader is installed and adjust tire track width as necessary.

**NOTE:** Set front tire tread width to 60" minimum when using 14.9R34 front tires. Use ocillation stops (6) if larger tires or narrower tread settings are used

Tractor steering stops may have to be adjusted to provide clearance between front tire, and loader on full left and right turn with front axle fully oscillated. Be sure lift cylinders are fully retracted when checking tire and fender clearances. Refer to tractor operator's manual for steering stop adjustment.

If tractor is equipped with front weights, they must be removed. The weight bracket can remain.

### INSTALLING REAR CROSS MEMBER

- Support fuel tank.
- Left side: Remove 5/8" bolt from fuel tank support frame.
- Remove two 3/4" long round spacers.
- Repeat Steps 1-3 if tractor is equipped with right side auxiliary fuel tank.

- FWA tractors: Remove four 5/8" bolts from driveshaft hanger casting located on bottom of tractor. DO NOT REMOVE CASTING.

- 2wd tractors: Remove four 5/8" bolts from cover plate located on bottom of tractor. DO NOT REMOVE COVER.

- Lift rear cross member (4) and align with holes in drive casting (FWA) or cover plate (2WD). Make sure holes of crossmember line up with side holes of transmission housing.

- (FWA) Loosely secure crossmember to bottom of tractor using four 5/8" x 2.00 bolts (13) + four 5/8" lockwashers (11).

(2WD) Slide four 15/16" round spacers (5) between cover plate and upper surface of cross member. Loosely attach using four 5/8" x 2.0 bolts (13) and four 5/8" lockwashers (11).

- Replace one of two 3/4" fuel tank spacers. Attach fuel tank support frame, 3/4" spacer + crossmember using one 5/8" x 2-3/4" bolt (12) + one 5/8" lockwasher. (Repeat on right side if equipped with auxiliary fuel tank).
- Finish securing left side of crossmember using one 5/8" x 1-3/4" bolt (9) + 5/8" lockwasher (11). Secure right side using two 5/8" x 1-3/4" bolt (9) + 5/8" lockwashers. (If equipped with auxiliary fuel tank repeat steps 8 & 9).

## 2-7133

### INSTALLING MID-MOUNT (Figure 1)

**NOTE:** Loosely install hardware until mounting kit is completely assembled to facilitate assembly and proper alignment. All mounting hardware will be torqued later.



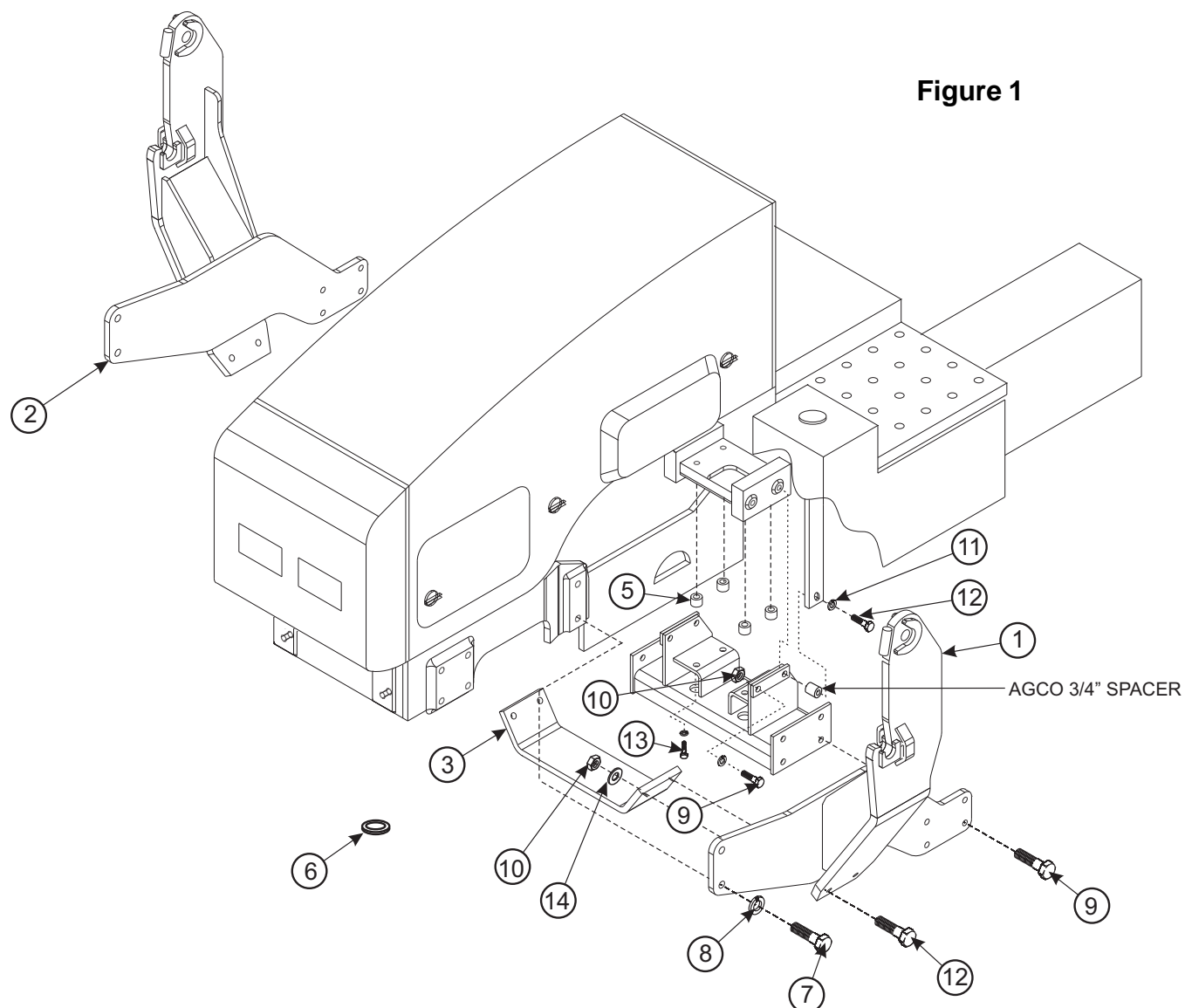
**WARNING:** Front window of cab is very vulnerable to breakage when installing mid-mount assemblies. Steps should be taken to protect glass when attaching mid-mounts.

### INSTALLING LEFT MID-MOUNT

1. Using hoist, lift left mid-mount (1) into position.
2. Loosely attach mount (1) to tractor frame using two 20MM bolts (7) and two 20MM lockwashers (8). Place bolts in forward holes of mount. (See Figure 1)
3. Loosely attach mid-mount (1) to crosstie assembly (4) using four 5/8" x 1.75 bolts (9) and four 5/8" locknuts (10).
4. Torque hardware to valves specified in torque chart.

## NOTES

Figure 1









## PARTS LIST - AGCO MOUNTING KIT

ITEM	SMC NO.	DESCRIPTION	QTY.
1	50275	MID-MOUNT ASSEMBLY, Left	1
2	50274	MID-MOUNT ASSEMBLY, Right	1
3	50283	CROSSTIE	1
4	50282	CROSSTIE ASSEMBLY	1
5	42787-4	SPACER, (2WD only)	4
6	42502-30	WASHER, (Oscillation Stop)	6
7	42672-37	HHCS, M20 - 2.50 x 50MM Bolt	4
8	48093-2	LOCKWASHER, 20MM	4
9	41838-32	HHCS, 5/8"-11 x 1.75 Bolt	11
10	41840-7	LOCKNUT, 3/8"-11	12
11	41837-7	LOCKWASHER, 5/8"	8
12	41838-79	HHCS, 5/8"-11 x 2.75 Bolt	6
13	41838-27	HHCS, 5/8"-11 x 2.00 Bolt	4
14	42502-12	FLATWASHER, 5/8"	4

**GENERAL TORQUE SPECIFICATIONS**

USE THE FOLLOWING TORQUES WHEN SPECIAL TORQUES ARE NOT GIVEN

**Standard American and Metric Cap Screws**

AMERICAN STANDARD CAP SCREWS									METRIC CAP SCREWS								
SAE Grade	5				8				Metric Class	8.8				10.9			
Typ. Head Markings									Typ. Head Markings	 				 			
Cap Screw	TORQUE				TORQUE				Cap Screw	TORQUE				TORQUE			
Size	FT·LBS		N·m		FT·LBS		N·m		Size	FT·LBS		N·m		FT·LBS		N·m	
Inches	MIN	MAX	MIN	MAX	MIN	MAX	MIN	MAX	Millimeters	MIN	MAX	MIN	MAX	MIN	MAX	MIN	MAX
1/4 - 20	6.25	7.25	8.5	10	8.25	9.5	11	13	M6 x 1.00	6	8	8	11	9	11	12	15
1/4 - 28	8	9	11	12	10.5	12	14	16	M8 x 1.25	16	20	21.5	27	23	27	31	36.5
5/16 - 18	14	15	19	20	18.5	20	25	27	M10 x 1.50	29	35	39	47	42	52	57	70
5/16 - 24	17.5	19	23	26	23	25	31	34	M12 x 1.75	52	62	70	84	75	91	102	123
3/8 - 16	26	28	35	38	35	37	47.5	50	M14 x 2.00	85	103	115	139	120	146	163	198
3/8 - 24	31	34	42	46	41	45	55.5	61	M16 x 2.50	130	158	176	214	176	216	238	293
7/16 - 14	41	45	55.5	61	55	60	74.5	81	M18 x 2.50	172	210	233	284	240	294	325	398
7/16 - 20	51	55	69	74.5	68	75	92	102	M20 x 2.50	247	301	335	408	343	426	465	577
1/2 - 13	65	72	88	97.5	86	96	116	130	M22 x 2.50	332	404	450	547	472	576	639	780
1/2 - 20	76	84	103	114	102	112	138	152	M24 x 3.00	423	517	573	700	599	732	812	992
9/16 - 12	95	105	129	142	127	140	172	190	M27 x 3.00	637	779	863	1055	898	1098	1217	1488
9/16 - 18	111	123	150	167	148	164	200	222	M30 x 3.00	872	1066	1181	1444	1224	1496	1658	2027
5/8 - 11	126	139	171	188	168	185	228	251	<b>NOTE:</b> These values apply to fasteners as received from supplier, dry or when lubricated with normal engine oil. They do not apply if special graphite or molysulphide greases or other extreme lubricants are used.								
5/8 - 18	152	168	206	228	203	224	275	304									
3/4 - 10	238	262	322	355	318	350	431	474									
3/4 - 16	274	305	371	409	365	402	495	544									
7/8 - 9	350	386	474	523	466	515	631	698									
7/8 - 14	407	448	551	607	543	597	736	809									
1 - 8	537	592	728	802	716	790	970	1070									
1 - 14	670	740	908	1003	894	987	1211	1337									

# INSTALLATION INSTRUCTIONS