

QUICK ATTACH DEVICE, SKID STEER ATTACHMENT COMPATIBLE FOR NEW HOLLAND 32LA & 33LA LOADERS AND 4211 & 4211SS LOADERS

Quick attach device can be installed using tools ordinarily available.

Torque all hardware to specifications listed in loader operator's manual.

Shut off the tractor engine and engage the tractor brakes during installation.

Only quick attach, skid steer compatible attachments can be used with the quick attach device. Pin on style attachments can be used on the loader, but necessitate removal of the quick attach device, 4-bar linkage and relocation of the bucket level indicator.

All references to left and right used in these instructions are as they would appear to the operator standing at the rear of the unit facing forward.

ASSEMBLING QUICK ATTACH DEVICE (Figure 1A)

1. Quick attach device is pre-assembled at the factory.
2. Unband the quick attach device (1) and wood blocks.
3. Disassemble 4-bar linkage by removing and discarding cotter pins and shipping tubes pins.

INSTALLING QUICK ATTACH DEVICE (Figure 1 & 2)



WARNING: Always use a drift and hammer made of non-sparking material (a shot-filled mallet is recommended) to install or remove pins. A steel hammer or drift could generate flying metal fragments and result in injury. Always wear safety glasses when using a hammer to remove or install pins.

1. Fasten quick attach device (21) to lower boom arms using 1-1/4 x 5-7/8 attachment pins, 3/8 x 2-1/4 cap screws, and 3/8 lock nuts (supplied with loader). Refer to figure 2.
2. Fasten 4-bar link assembly (17) to quick attach device (21) using 1-1/4 x 5-7/8 attachment pins, 3/8 x 2-1/4 cap screws, and 3/8 lock nuts (supplied with loader).

3. Attach 4-bar pin assembly (14 & 15) through bushing on under side of loader boom, through 4-bar link assembly (17) and through bushing on rod end of tilt cylinder, as shown in figure 2.

NOTE: 4-bar pin assembly (14 & 15) must be installed from the outside of the loader, **with longer leg of 4-bar pin assembly attached to bushing on rod end of tilt cylinder (see figure 2).**

4. Attach bucket leveling rod indicator (supplied with loader), to inside of right 4-bar pin assembly (15) and lug (16), as shown. Secure with 3/8 x 2 spring pin (18).
5. Secure 4-bar pin assembly (14 & 15) with lug (16), washer (19), and 3/8 x 2 spring pin (18).

MOUNTING ATTACHMENT TO LOADER (Figure 1 & 2)



WARNING: To avoid injury during installation of the loader attachment, do not allow bystanders within 10 feet of loader or attachment.

1. Locate tractor and attachment on level ground. Lower boom to rest on the ground. Extend the bucket cylinders slightly, while raising the boom to provide three to five inches of ground clearance, drive the tractor ahead slowly toward the attachment, aligning the loader quick attach device as shown in figure 2.

NOTE: To help guide loader quick attach device into attachment, alignment reflective tape has been applied to back of attachment as shown.

2. While driving the tractor ahead slowly to maintain contact with the attachment, activate the lift cylinders to raise the loader until the quick attach engages under the attachment lip.
3. Then activate bucket cylinders to retract, continuing to roll the attachment back completely.
4. Place tractor in neutral, set parking brake, shut off tractor. Move latch pin handles to latch (down) position (refer to figure 2).

MOUNTING ATTACHMENT TO LOADER (Cont.) (Figure 1 & 2)

5. Start tractor activate lift cylinders to raise attachment one or two feet off the ground and extend bucket cylinders to tilt attachment at a slight downward angle, so quick attachment latch pins are visible. Visually inspect the attachment mechanism to verify that the pins are engaged through the latch plate on the back of the attachment.

NOTE: *If the attachment is not securely attached, follow the instructions for detaching it and repeat the above procedure.*

DETACHING QUICK ATTACH DEVICE (Figure 1 & 2)



WARNING: *To avoid injury during installation/removal of the loader attachment, do not allow bystanders within 10 feet of loader or attachment.*

1. Locate tractor and loader on level ground.
2. Lower boom arms until the attachment is level and resting on ground.
3. Place tractor in neutral, set parking brake, shut off tractor engine and disengage quick attach device latch pins by moving handles to unlatch position (refer to figure 2).
4. Start tractor engine, release brake and extend bucket cylinders while slowly backing the tractor away from attachment, until quick attach disengages from attachment.

PARTS LIST - QUICK ATTACH DEVICE (Figures 1 & 2)

ITEM	SMC NO.	CNH NO.	DESCRIPTION	QTY.
1	46579-1	86581722	HANDLE ASSEMBLY, Left	1
2	46579-2	86581723	HANDLE ASSEMBLY, Right	1
3	46580	86581724	PIVOT ASSEMBLY	2
4	43498	86575348	LATCH PIN	2
5	43538	86610167	SPRING	2
6	43502	86510869	CONNECTOR PIN	2
7	43501	86610166	SPRING GUIDE	2
8	43499	9829733	PIVOT PIN	2
9	49827	SML49827	CAP SCREW, Adjustment	2
10	6088-1	86616372	PIN, .375 x 1-3/4	4
11	6120-15	86582378	BUSHING	2
12	46576	PL	WASHER, Wave shape, Spring	2
13	6075-4	PL	FITTING, Grease, 1/4-28	2
14	50344-1	SML503441	4-BAR LINKAGE ASSEMBLY, Left	1
15	50344-2	SML503442	4-BAR LINKAGE ASSEMBLY, Right	1
16	50347	SML50347	4-BAR LUG	2
17	50343	SML50343	4-BAR LINK ASSEMBLY	2
18	6015-2	86581648	SPRING PIN, 3/8 x 2	4
19	6120-5	86582383	BUSHING	3
*20	6075-2	PL	FITTING, Grease, 1/8-27 (4 fittings furnished with loader)	8
21	46581	86582384	MAIN FRAME ASSEMBLY	1
*22	46704	86581650	PIN, 1-1/4 x 5.88	4
*23	G180132	88546	SCREW, Cap, 3/8-16 x 2-1/4	4
*24	G9413534	9637692	NUT, Lock, 3/8-16	4
25	46979-1	86582385	TAPE, Reflective, Alignment, White, 14"	4

* Items furnished with basic loader.

NOTE: 4-BAR LINKAGE PICTURED HERE HAS BEEN *REVERSED FOR SHIPMENT ONLY*. BE SURE THAT 4-BAR LINKAGE IS ASSEMBLED AS ILLUSTRATED IN FIGURE 2, PAGE 4.

Figure 1A

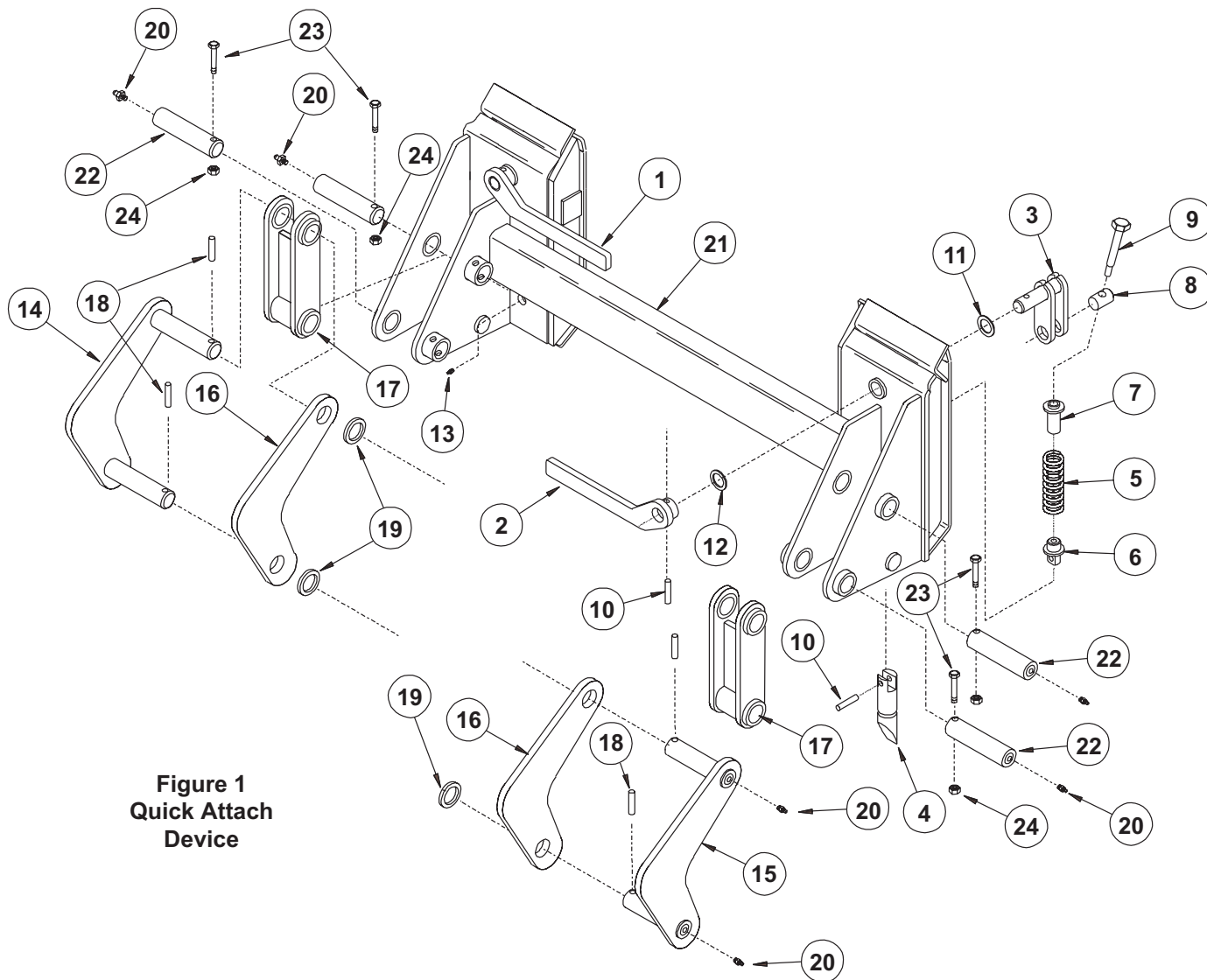
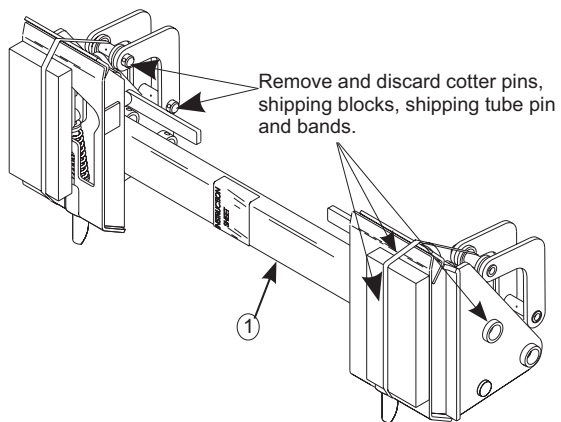
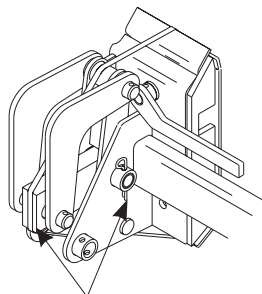
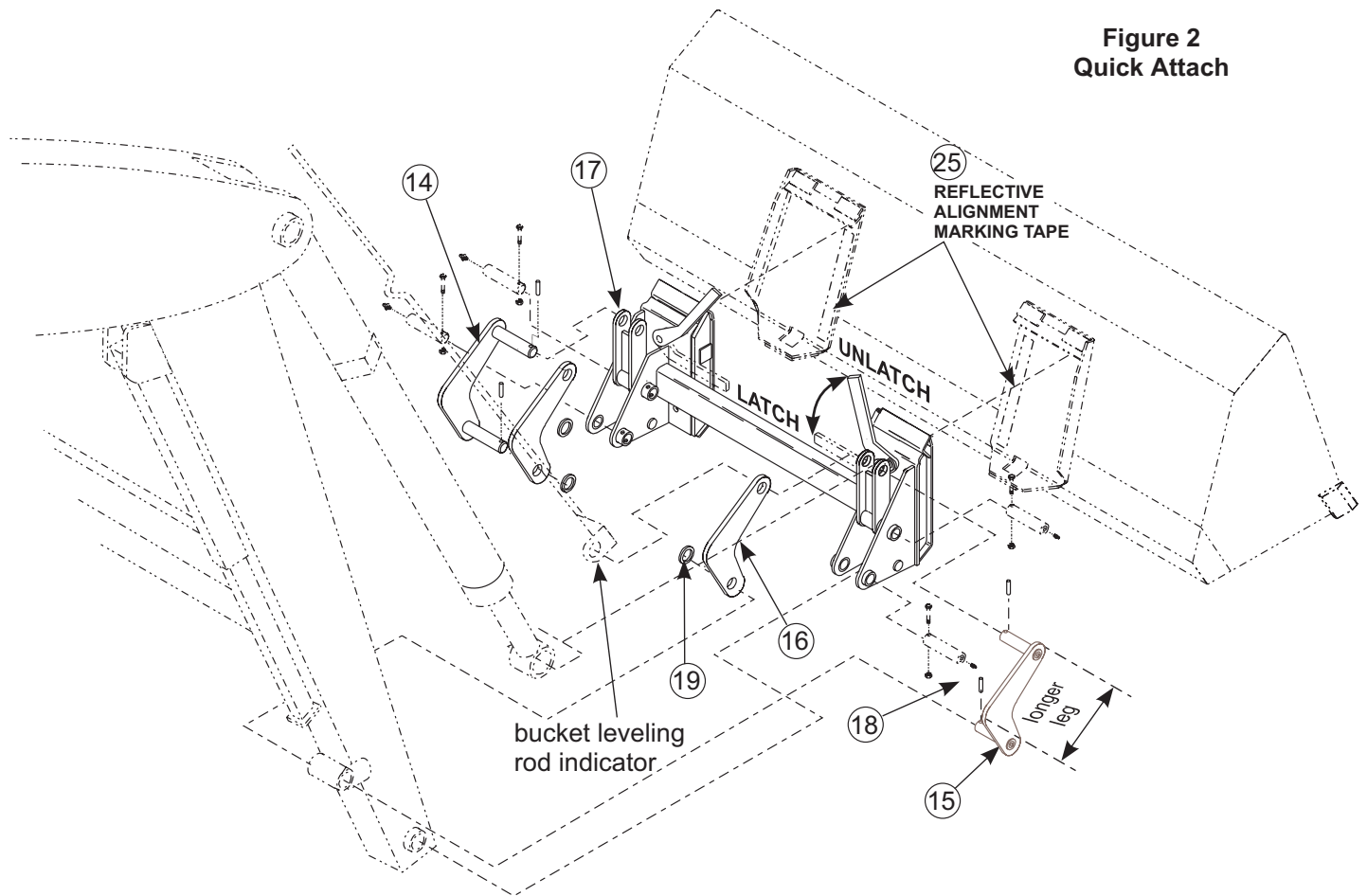


Figure 2
Quick Attach



INSTALLATION INSTRUCTIONS