

BACKHOE SUBFRAME KIT 65A BACKHOE CUB CADET 7254 & 7264 TRACTORS

TRACTOR AND BACKHOE GENERAL INFORMATION

Subframe can be installed on tractor and backhoe using tools ordinarily available.

Tractor must be equipped with loader to provide adequate counter weight. 3-point linkage for 3-point must be removed (see caution below).

Complete backhoe installation requires hydraulic PTO pump kit.

Reference to left and right used in these instructions refer to position when seated in the operating position on tractor.



CAUTION: 3-point arms must be removed from tractor when backhoe is mounted on tractor. When backhoe and backhoe subframe are removed from tractor, 3-point arms can be installed with backhoe subframe rear mounting bracket in place.

Read backhoe operators manual and become familiar with backhoe controls before installing subframe. Knowing how backhoe functions is necessary to attach subframe and backhoe to tractor.

NOTE: Install all attaching hardware loose (unless noted otherwise) until backhoe subframe is completely assembled to facilitate assembly and proper alignment. Tighten all hardware to torques specified in general torque specifications table included in backhoe operator's manual.

Install swing lock pin so boom remains in straight back position.

Shut off engine and engage brakes during installation of subframe kit.

INSTALLING MOUNTING BRACKETS TO TRACTOR (Figure 2)

IMPORTANT: Remove 3-point arms. 3-point arms cannot be installed with backhoe subframe on this installation. When backhoe is removed from tractor, 3-point arms can be reinstalled onto tractor with subframe rear mount in place and 3-point can be used normally.

1. Remove lower 3-point brackets from sides of rear casting. Retain for reinstallation later.
2. Remove drawbar from hitch assembly. Remove hitch assembly from rear of tractor.
3. Install backhoe subframe rear mounting bracket (1). Hitch assembly is attached over rear mounting bracket (1) and is attached to rear of tractor using four 1/2 x 1-1/4 cap screws (12) and 1/2 lock washers (14). Lower 3-point brackets are attached over subframe rear mounting using six 1/2 x 1-1/2 cap screws (11) and 1/2 lock washers (14). Install pump stop (16) into tractor hitch assembly using pin supplied with hitch. Store drawbar for later use.

NOTE: The 2406S loader is required when backhoe is installed onto tractor. When backhoe is mounted, the backhoe front mounting brackets replace the spacer plates supplied with loader mounting.

4. Slide backhoe subframe front mounting bracket (2) into place. Mount loader mountings over top of subframe front mounting bracket using hardware provided with loader mounting kit.

INSTALLING MOUNTING TUBES ONTO SUBFRAME CHANNELS (Figure 2)

1. Install rear crosstube assembly (4) to left and right channel assemblies (17 & 18) as shown in figure 1 using 1/2 x 1-1/2 cap screws (11) and 1/2 lock nuts (8).
2. Install front crosstube assembly (3) onto channel assemblies (16 & 17) using 1/2 x 1-1/2 cap screws (11) and 1/2 lock nuts (8).
3. Install assembled subframe to backhoe mainframe using 7/8 x 4 cap screws (9), 7/8 lock washers (13) and 7/8 nuts (15) in rear holes. Use 3/4 x 3-1/2 cap screws (10) and 3/4 lock nuts (7) in front holes.
4. Fasten support braces (19) to subframe and backhoe using 3/4 x 2-3/4 cap screws (20) and double nut with 3/4 lock nuts (21).

Install hydraulic kit to backhoe using instructions supplied with kit.

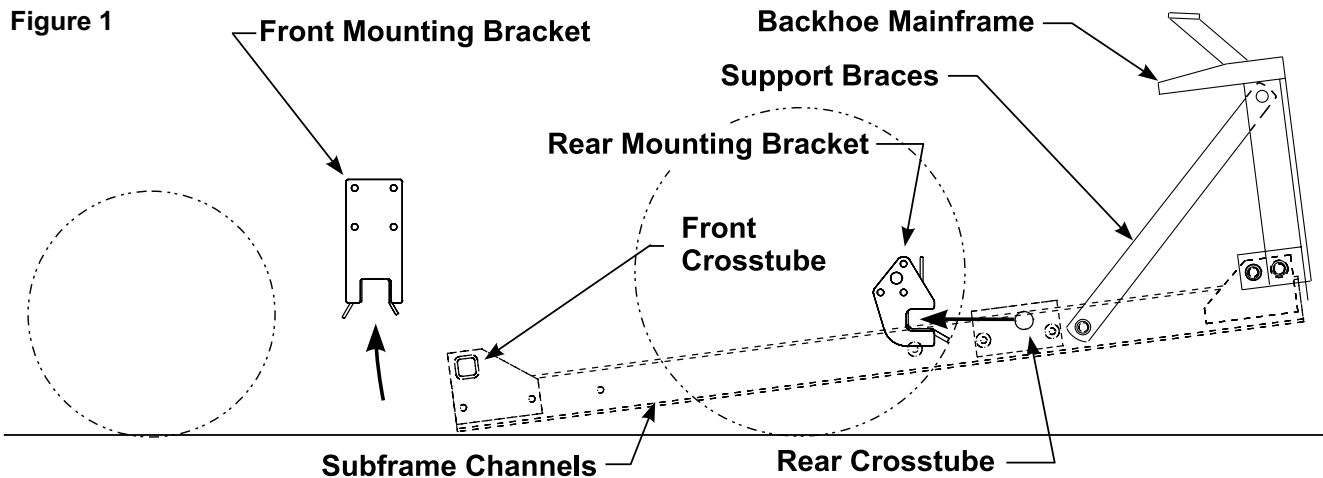
2-7201

MOUNTING BACKHOE TO TRACTOR (Figure 1)

1. Back tractor toward backhoe, with tractor straddling subframe assembly, until positioned so that auxiliary PTO pump can be connected to tractor. Turn off tractor, set brakes and make sure PTO is disengaged.
2. Connect pump to PTO.
3. Start tractor. Engage PTO. Tractor should be running at low idle. Using backhoe hydraulic controls, extend stabilizer cylinders and boom

cylinder until rear crosstube (4) is level with rear mounting bracket (1) and front of subframe is on ground (Figure 1).

4. Slowly back tractor until rear crosstube (4) is seated in rear mounting bracket (1).
5. Retract boom cylinder and stabilizer cylinders so front of subframe swings up until front crosstube (3) is seated in front mounting bracket (2).
6. Secure front crosstube (3) in place using pins (5) and linch pins (6).



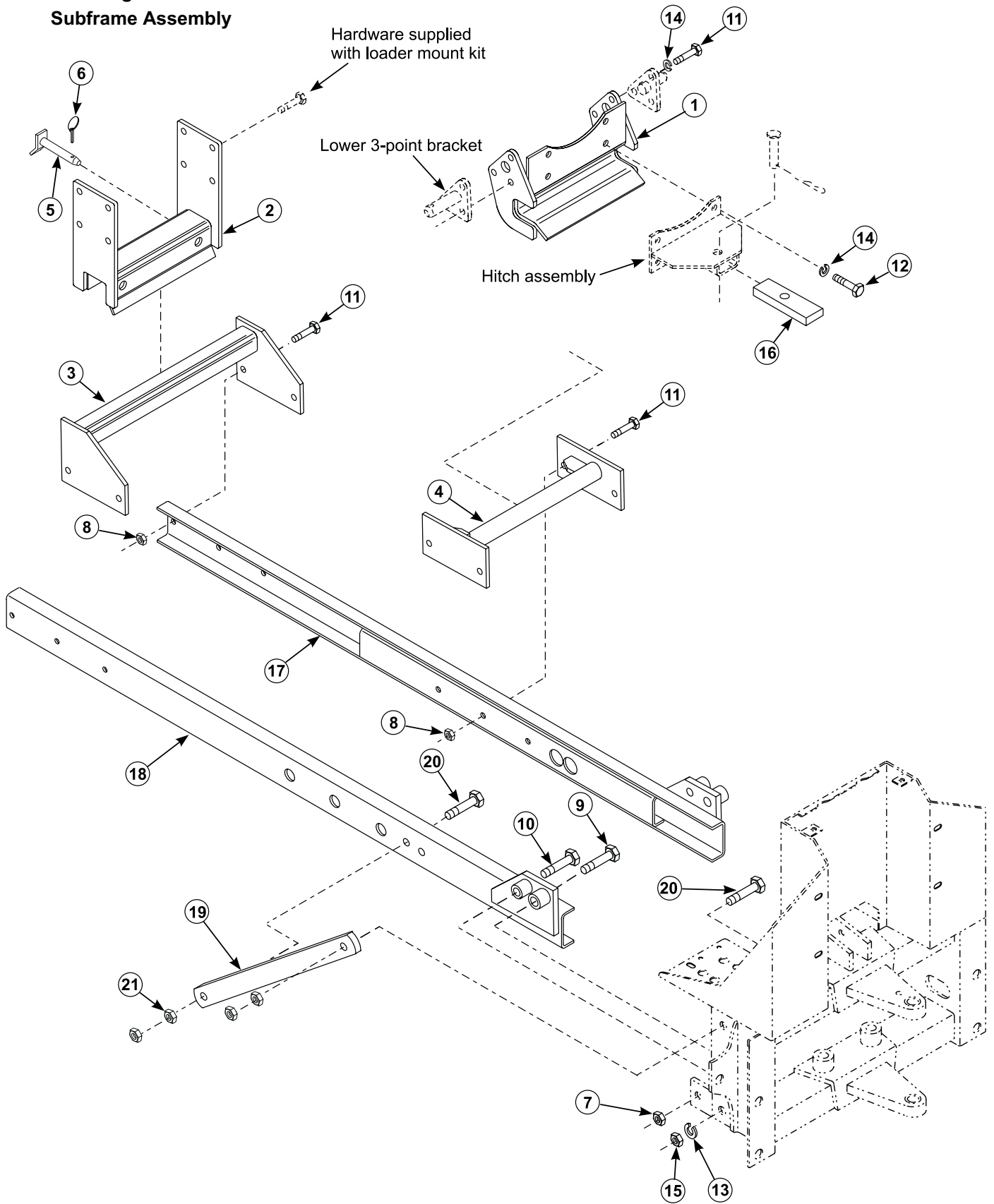
PARTS LIST - REPAIR PARTS (Figure 2)

ITEM	PART NO.	DESCRIPTION	QTY.
1	50795	MOUNTING BRACKET ASSEMBLY, Rear	1
2	50800	MOUNTING BRACKET ASSEMBLY, Front	1
3	50794	CROSSTUBE ASSEMBLY, Front	1
4	50790	CROSSTUBE ASSEMBLY, Rear	1
5	44892	PIN ASSEMBLY	2
6	44756-1	LINCH PIN	2
7	41840-8	NUT, Lock, 3/4-10	2
8	41840-5	NUT, Lock, 1/2-13	8
9	41838-46	SCREW, Cap, 7/8-9 x 4	2
10	41838-43	SCREW, Cap, 3/4-10 x 3.50	2
11	41838-33	SCREW, Cap, 1/2-13 x 1.50	18
12	41838-2	SCREW, Cap, 1/2-13 x 1.25	4
13	41837-9	WASHER, Lock 7/8	2
14	41837-5	WASHER, Lock, 1/2	10
15	41836-9	NUT, Hex, 7/8-9	2
16	50803	PUMP STOP	1

PARTS LIST - SUBFRAME CHANNEL KIT - 2-7253 Order Separately

ITEM	PART NO.	DESCRIPTION	QTY.
17	51145-1	CHANNEL ASSEMBLY, Right	1
18	51145-2	CHANNEL ASSEMBLY, Left	1
19	44836	SUPPORT BRACE	2
20	42969-4	SCREW, Cap, 3/4-10 x 2.75	4
21	47264-8	NUT, Lock, 3/4	8

Figure 2
Subframe Assembly



INSTALLATION INSTRUCTIONS