

Keep with Operator's Manual

## LOADER MOUNTING KIT 2406 LOADER JOHN DEERE TRACTORS

MODEL	FWA	ROPS
4010	X	X

### TRACTOR AND MOUNTING KIT GENERAL INFORMATION

Mounting kit can be installed on tractor using tools ordinarily available, including an overhead hoist and sling for initial loader installation, floor jack, standard and metric wrenches, and a torque wrench.

Tractor must be equipped with John Deere SCV (Selective Control Valve).

Hose kit (2-6893) is required to complete loader installation and includes hoses, male quick-coupler ends, and spiral identification bands required to plumb loader to female quick couplers of tractor SCV.

If tractor is equipped with front weights, weights must be removed before installing loader mounting brackets.

Check front tire clearances once loader is installed and adjust tire track width as necessary to prevent tire interference with loader.

Reference to left and right used in these instructions refer to position when seated in the operating position on tractor. Shut off engine and engage brakes during installation.

### INSTALLING LOADER FRONT MOUNTING BRACKETS (Figure 1)

**NOTE:** *Install all attaching hardware loosely (unless noted otherwise) until mounting kit is completely assembled to facilitate assembly and proper alignment. Tighten all hardware to torques specified in general torque specifications table when assembly is complete.*

1. Temporarily remove hood side panels from each side of tractor.
2. Thread one 3/4" flange nut (10) onto each end of cross shaft (5) with flange facing out. Loosely attach cross shaft (5) through bottom hole of right front mounting bracket (2) using third 3/4" flange nut (10), with flange toward bracket (2) surface.

**NOTE:** *It may be necessary to thread inner (first two) flange nuts (10) a long way onto cross shaft (5) to allow both front mounting brackets (1 & 2) to be fastened to tractor frame.*

**NOTE:** *Cross shaft (5) and flange nuts (10) will add structural stability to tractor frame.*

3. Attach left and right front mounting brackets (1 & 2) to tractor frame, aligning free end of cross shaft (5) to pass through bottom hole in left front mounting bracket (1). Use 1/2 x 1-1/2" cap screws (8) and lock nuts (9) to fasten left and right mounting brackets (1 & 2) to tractor frame. Torque 1/2-13 Grade 8 hardware to 86-96 ft.·lbs. (116-130 Nm).
4. Loosely thread fourth 3/4" flange nut (10) onto cross shaft (5). Move inner 3/4" flange nuts (10) outward on cross shaft (5) until shaft is approximately centered with tractor frame and seat inner flange nuts firmly against inside surfaces of left and right front mounting brackets (1 & 2). Tighten outside flange nuts.

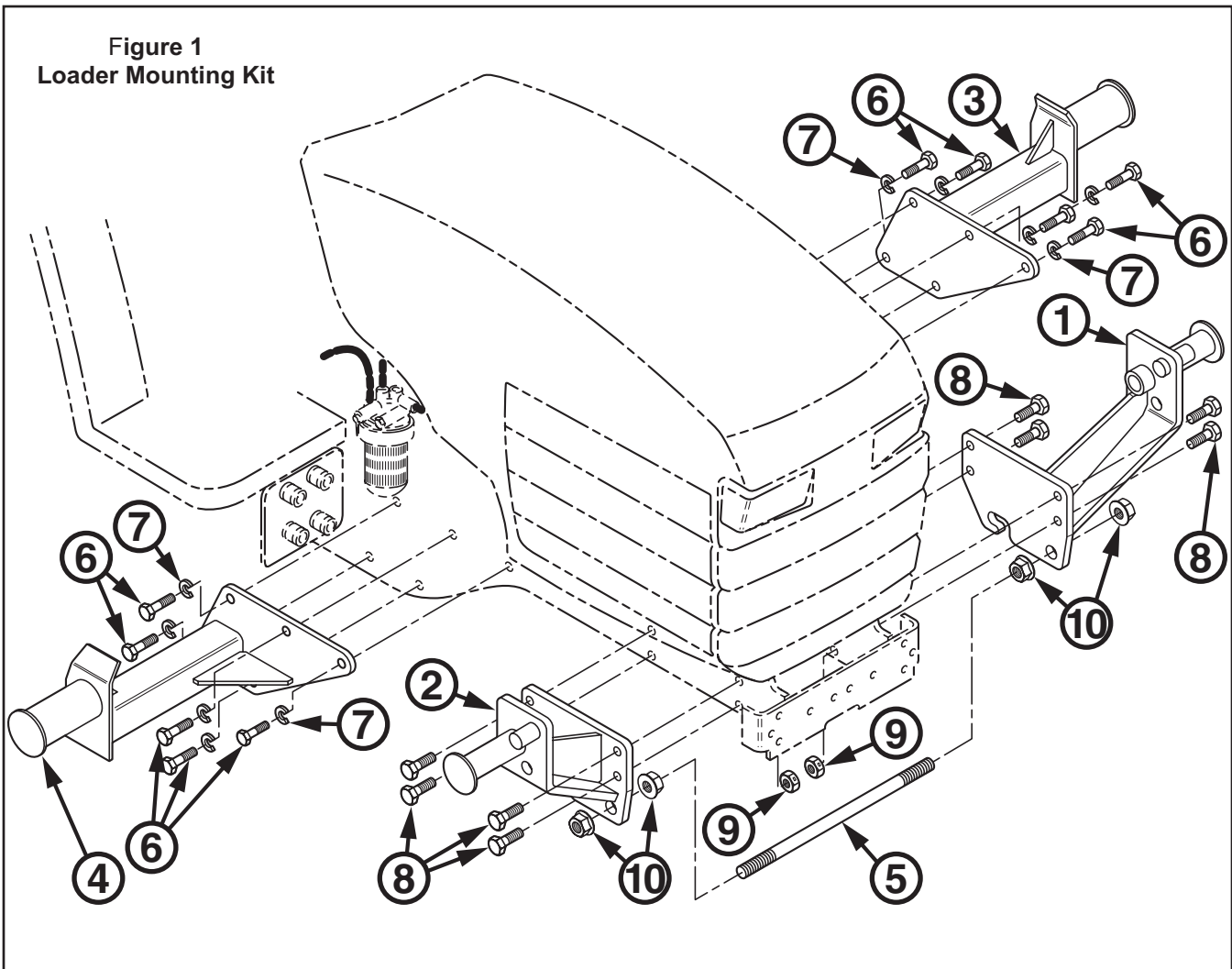
### INSTALLING LOADER MID MOUNTING BRACKETS (Figure 1)



**WARNING:** *It is critical that engine is fully and properly supported and bolts are not all removed at the same time to prevent engine from sagging out of alignment.*

1. Temporarily remove fuel filter from right side of tractor.
2. Taking care to not damage SCV couplers or fuel filter, attach right mid mounting bracket (4) to right side of frame using 12mm x 40mm cap screws (6) and 1/2" lock washers (9).
3. Attach left mid mounting bracket (3) to left side of tractor frame using 12mm x 40mm cap screws (6) and 1/2" lock washers (9).
4. Torque 12mm-1.75 Class 10.9 hardware to 75-91 ft.·lbs. (102-123 Nm).
5. Reinstall fuel filter and tractor side panels, which were removed earlier.

Figure 1  
Loader Mounting Kit



**PARTS LIST – MOUNTING KIT**

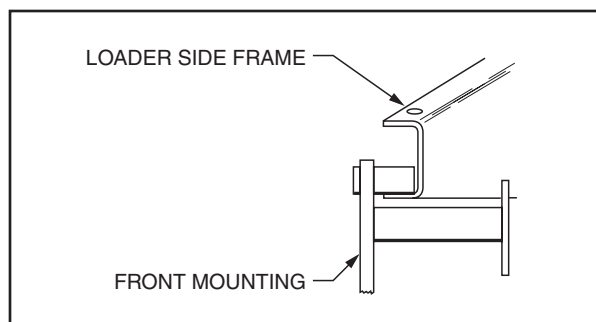
Item	Part No.	Description	Qty.
1	51010-1	BRACKET, Mounting, Front, Left	1
2	51010-2	BRACKET, Mounting, Front, Right	1
3	51012-1	BRACKET, Mounting, Mid, Left	1
4	51012-2	BRACKET, Mounting, Mid, Right	1
5	51015	SHAFT, Cross, Threaded Rod, 3/4 x 15-1/4"	1
6	49040-13	SCREW, Cap, 12mm-1.75 x 40mm, Class 10.9	10
7	41837-5	WASHER, Lock, 1/2"	10
8	42969-11	SCREW, Cap, 1/2-13 x 1-1/2", Grade 8	8
9	41840-5	NUT, Lock, 1/2-13, Type-N	8
10	42848-2	NUT, Flange, Lock, 3/4-10	4

## INSTALLING LOADER ONTO MOUNTING BRACKETS



**WARNING:** To avoid injury during loader installation, do not permit bystanders within ten feet of loader or tractor.

1. Attach nylon slings around loader front bumper and use an overhead hoist to support loader while removing pallet attachment brackets from loader. Remove 3/8" lock nuts and shoulder bolts which secure attachment flats to loader and remove loader from pallet. Reinstall hardware to loader to secure pins and hinges.
2. Remove 5/8 x 4" cap screws, washers, and lock nuts so hinges can be opened. Lower loader to a horizontal position and attach nylon slings around loader boom arms. Use overhead hoist to raise loader and position side frame channels over front mounting brackets. Slide loader to rear until side frames are on tubes of mid mounting brackets.





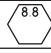
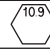
**NOTE:** Lower lip of side frame channel must be between front mounting tubes.

3. Clamp hinges around tubes of mid mounting brackets (3 & 4). Fasten using 5/8 x 4" cap screws, flat washers, and lock nuts, provided.
4. Refer to loader operator's manual and instructions packed with hose kit to complete loader installation.

**GENERAL TORQUE SPECIFICATIONS**

USE THE FOLLOWING TORQUES WHEN SPECIAL TORQUES ARE NOT GIVEN

**Standard American and Metric Cap Screws**

AMERICAN STANDARD CAP SCREWS										METRIC CAP SCREWS								
SAE Grade	5				8				Metric Class	8.8				10.9				
Typ. Head Markings									Typ. Head Markings									
Cap Screw	TORQUE				TORQUE				Cap Screw	TORQUE				TORQUE				
Size	FT·LBS		N·m		FT·LBS		N·m		Size	FT·LBS		N·m		FT·LBS		N·m		
Inches	MIN	MAX	MIN	MAX	MIN	MAX	MIN	MAX	Millimeters	MIN	MAX	MIN	MAX	MIN	MAX	MIN	MAX	
1/4 - 20	6.25	7.25	8.5	10	8.25	9.5	11	13	M6 x 1.00	6	8	8	11	9	11	12	15	
1/4 - 28	8	9	11	12	10.5	12	14	16	M8 x 1.25	16	20	21.5	27	23	27	31	36.5	
5/16 - 18	14	15	19	20	18.5	20	25	27	M10 x 1.50	29	35	39	47	42	52	57	70	
5/16 - 24	17.5	19	23	26	23	25	31	34	M12 x 1.75	52	62	70	84	75	91	102	123	
3/8 - 16	26	28	35	38	35	37	47.5	50	M14 x 2.00	85	103	115	139	120	146	163	198	
3/8 - 24	31	34	42	46	41	45	55.5	61	M16 x 2.50	130	158	176	214	176	216	238	293	
7/16 - 14	41	45	55.5	61	55	60	74.5	81	M18 x 2.50	172	210	233	284	240	294	325	398	
7/16 - 20	51	55	69	74.5	68	75	92	102	M20 x 2.50	247	301	335	408	343	426	465	577	
1/2 - 13	65	72	88	97.5	86	96	116	130	M22 x 2.50	332	404	450	547	472	576	639	780	
1/2 - 20	76	84	103	114	102	112	138	152	M24 x 3.00	423	517	573	700	599	732	812	992	
9/16 - 12	95	105	129	142	127	140	172	190	M27 x 3.00	637	779	863	1055	898	1098	1217	1488	
9/16 - 18	111	123	150	167	148	164	200	222	M30 x 3.00	872	1066	1181	1444	1224	1496	1658	2027	
5/8 - 11	126	139	171	188	168	185	228	251	<p><b>NOTE:</b> These values apply to fasteners as received from supplier, dry or when lubricated with normal engine oil. They do not apply if special graphite or moly sulphide greases or other extreme lubricants are used.</p>									
5/8 - 18	152	168	206	228	203	224	275	304										
3/4 - 10	238	262	322	355	318	350	431	474										
3/4 - 16	274	305	371	409	365	402	495	544										
7/8 - 9	350	386	474	523	466	515	631	698										
7/8 - 14	407	448	551	607	543	597	736	809										
1 - 8	537	592	728	802	716	790	970	1070										
1 - 14	670	740	908	1003	894	987	1211	1337										

# INSTALLATION INSTRUCTIONS