

Keep with Operator's Manual

LOADER MOUNTING KIT 2409 LOADER KIOTI DK40 TRACTORS BEFORE S/N 261500001

MODEL	FWA	ROPS
DK40 BEFORE S/N 261500001	X	X

GENERAL INFORMATION

Loader mounting brackets can be installed using tools ordinarily available, including an overhead hoist with sling, standard and metric wrenches, and a torque wrench.

NOTE: Leave all hardware loose until loader is completely assembled to facilitate alignment. Torque hardware to specifications listed in loader manual.

TRACTOR PREPARATION

1. Temporarily remove tractor side panels and front grille to prevent damage during installation of loader mounting brackets.
2. Loosen lower side panel support by removing two rear bolts from both left and right side of tractor. (Retain hardware for later re-use.)
3. Remove all dust plugs from transmission housing on left and right side of tractor.
4. Remove cap screws securing inspection cover plate from right side of clutch housing. Leave original gasket in place. Inspection opening will be covered by loader mid mounting bracket.

INSTALLING LOADER MOUNTING BRACKETS

1. Install front mounting bracket (3) to tractor frame using 5/8 x 1-1/2" cap screws (16) and 5/8" lock nuts (12).
2. Remove 12mm cap screws from tractor side frame where front of mid mounting bracket is to be attached to side frame. Install mid mounting brackets (1 & 2) to clutch housing using 14mm x 35mm cap screws (17) and 9/16" lock washers (18), and to tractor side frame using 12mm x 60mm cap screws (19), 1/2" flat washers (15) and 1/2" lock washers (9).
3. Placing spacer tubes (8) between rear reinforcement brackets (5 & 6) and rear axle casting, fasten rear reinforcement brackets (5 & 6) and spacer tubes (8) to axle casting using 12mm x 60mm cap screws (19) and 1/2" lock washers (9). Attach cross tie (7) to bottom of mid mounting brackets (1 & 2) and fasten rear reinforcement brackets (5 & 6) and cross tie (7) to mid mounting brackets (1 & 2) using 1/2 x 2" cap screws (13) and 1/2" lock nuts (14).

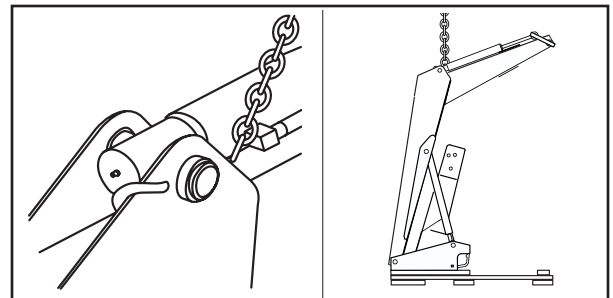
4. Tighten 14mm hardware to 109ft.-lbs. (148N·m) torque, and tighten 12mm hardware to 70ft.-lbs. (95N·m) torque. Refer to general torque specifications table on page 4 for torque values for tightening all other hardware.
5. Reinstall and tighten bolts in lower side panel supports on both sides of tractor.
6. Reinstall tractor side panels and front grille.

INSTALLING LOADER TO MOUNTING BRACKETS



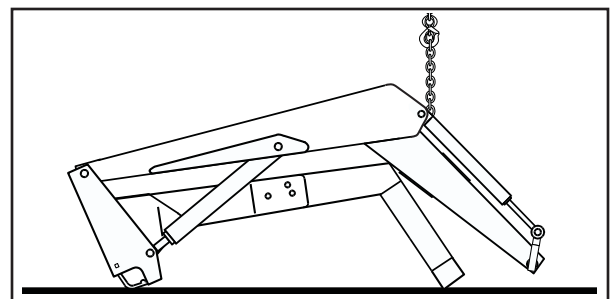
WARNING: To avoid injury during installation of quick attach loader, do not permit bystanders within ten feet of loader.

1. Loop chain under each lift cylinder and hook on loader boom arm. Using overhead hoist to support loader remove hardware securing loader to pallet. Lift loader and remove pallet.



CAUTION: Do not damage grease fitting on end of cylinder. Be sure chain does not pinch lift cylinder.

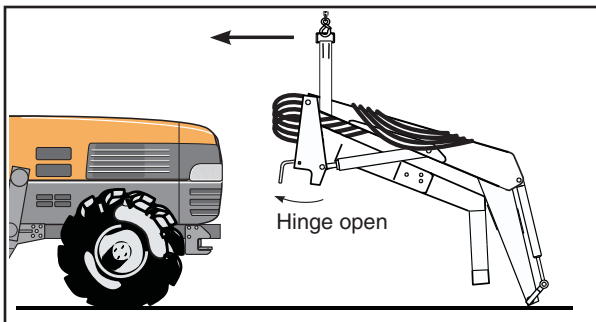
2. Using overhead hoist, lower loader from vertical shipping position to horizontal position leaving enough room to install yoke (scraps of cardboard may be used to protect paint). Install yoke assembly (4) using 3/4 x 2-1/2" cap screws (10) and 3/4" lock nuts (11). Lower loader completely to ground.



INSTALLING LOADER TO MOUNTING BRACKETS (Continued)

NOTE: Tighten hardware connecting yoke to loader side frames snug but do not torque completely. After loader has been mounted to tractor and aligned with mid mounting brackets and front mounting brackets, tighten hardware to 239-262ft.·lb. (324-355N·m) torque.

3. Install hose or valve kit to tractor and loader. Refer to assembly manual provided for installation instructions.
4. Position tractor close enough so plumbing can be connected to tractor. Route hoses loosely to allow maximum reach. Using nylon straps reposition overhead hoist to loader boom arms near pivot point to side frames.
5. Operate loader control valve to extend lift cylinders until front yoke is resting on ground and side frame uprights will clear front tires. Shut off tractor engine and engage tractor brakes. Reroute loader hoses to inside of right mid mounting bracket. Remove lock nut and washer from loader hinge and swing each hinge open.



6. Start tractor engine, release tractor brakes and slowly drive forward while operating lift control levers to retract lift cylinders. Position loader so hinges hook over mid mounting tubes. Use of overhead hoist will facilitate positioning loader into mid mounting tubes.

IMPORTANT: Position loader uprights so mid mounting tubes are tight against hinges until loader has finished rotating so loader front bumper tube does not hit lower flange of front mounting channel.

7. With tractor in neutral, retract lift cylinders, bringing side frame up so front yoke tube contacts lower surface of tractor frame. Move tractor ahead until front yoke tube engages in front mounting channel and upright hinges can clamp around mid mounting tube. Engage tractor brakes and shut off tractor engine.

8. Clamp hinges to mid mounting tubes with 5/8" flat washers, 5/8" lock washer and 5/8" hex nuts (supplied with loader).

IMPORTANT: Be sure to use lock washers and hex nuts to clamp hinge. Tighten nuts against hinge securely, but not to more than 125ft.·lb. (170N·m) torque.

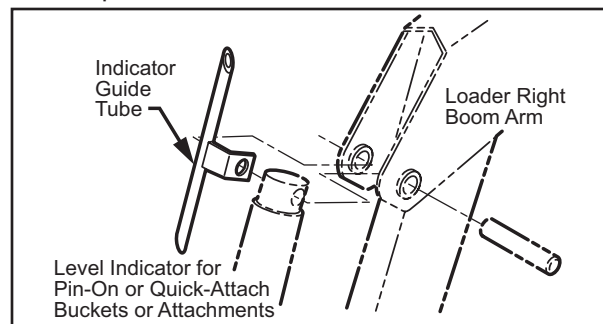
9. Start tractor engine and slowly cycle lift and bucket cylinders several times to purge air out of system, then retract cylinders and shut off tractor engine. Add additional tractor hydraulic fluid as specified in tractor operator's manual to bring level of hydraulic fluid up to full.

INSTALLING BUCKET OR LOADER ATTACHMENT

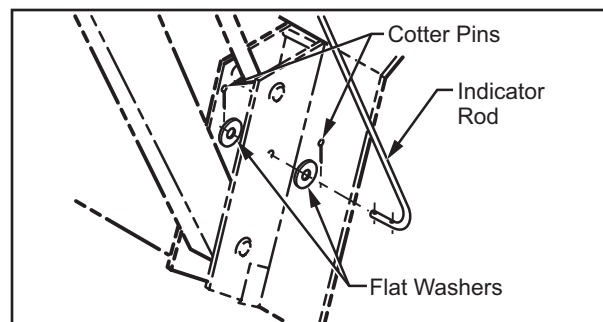
Refer to instructions provided with bucket or attachment to install bucket or attachment.

INSTALLING LEVEL INDICATOR

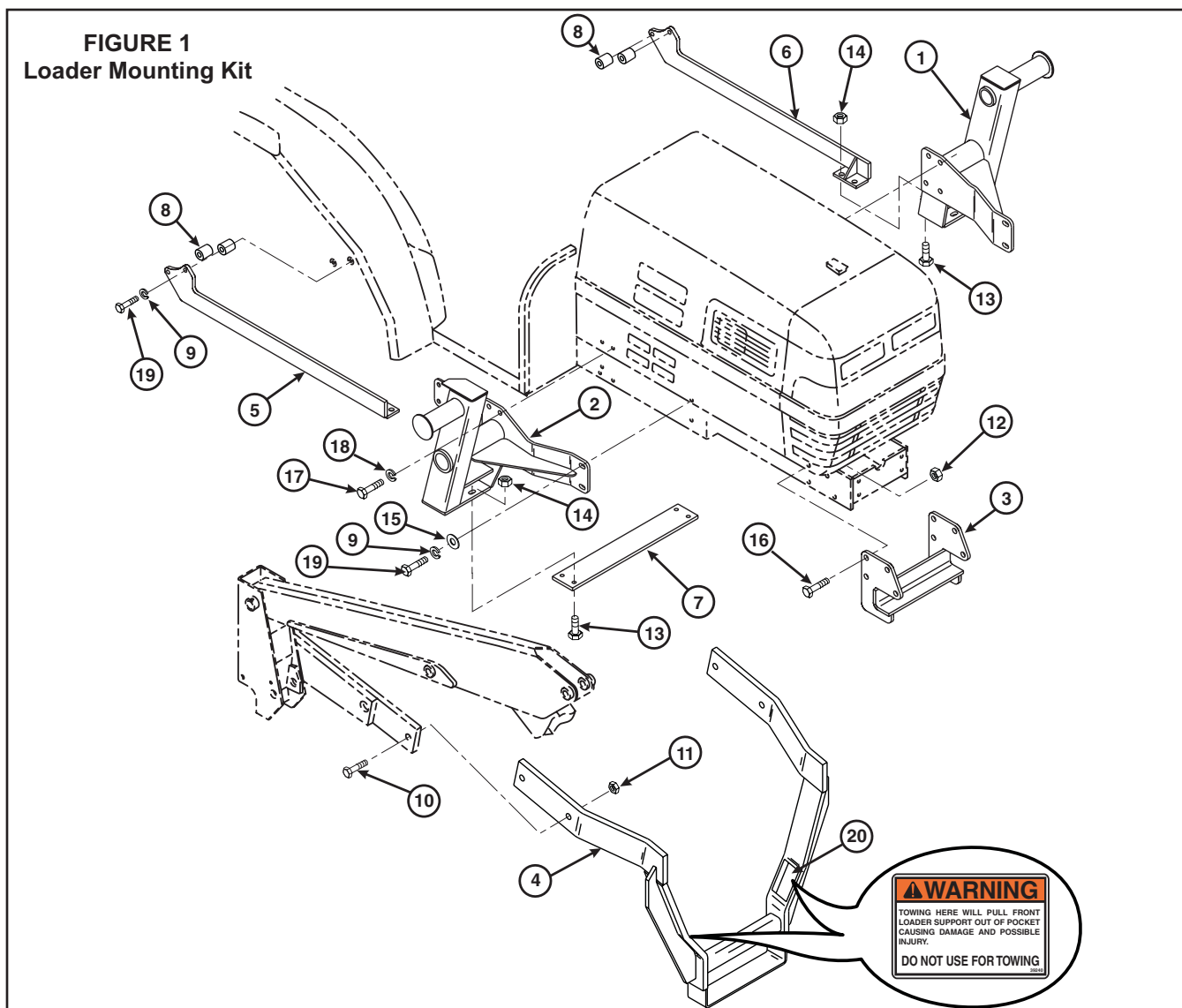
1. Attach indicator guide tube to cylinder pin. Guide tube is positioned to outside of boom.



2. Slide level indicator rod through guide tube. Attach other end of rod with 1/8 x 1" cotter pins and 3/8" flat washers.
3. Locate tractor and loader on level surface. With bottom of bucket or attachment resting on surface, cut off excess rod flush with end of guide tube or paint exposed rod a contrasting color.



IMPORTANT: When installation is complete, check tire clearances with loader, mounting brackets, and bucket or attachment. Adjust tractor tread width or steering stops, if necessary, to provide adequate clearance.

**PARTS LIST - MOUNTING KIT**

Item	Part No.	Description	Qty.
1	51121	BRACKET, Mounting, Mid, Left	1
2	51120	BRACKET, Mounting, Mid, Right	1
3	50366	BRACKET, Mounting, Front	1
4	51137	BRACKET, Loader Front Yoke, with Decals	1
5	51125-2	BRACKET, Rear Reinforcement, Right	1
6	51125-1	BRACKET, Rear Reinforcement, Left	1
7	50382	PLATE, Mid Cross Tie	1
8	43395-8	TUBE, Spacer	4
9	41837-5	WASHER, Lock, 1/2"	8
10	41838-7	SCREW, Cap, 3/4-10 x 2-1/2"	4
11	41840-8	NUT, Lock, 3/4-10	4
12	41840-7	NUT, Lock, 5/8-11	8
13	41838-13	SCREW, Cap, 1/2-13 x 2"	4
14	41840-5	NUT, Lock, 1/2-13	4
15	42502-30	WASHER, Flat, 1/2"	4
16	41838-29	SCREW, Cap, 5/8-11 x 1-1/2"	8
17	42672-48	SCREW, Cap, 14mm-1.50 x 35mm	8
18	41837-6	WASHER, Lock, 9/16"	8
19	42672-49	SCREW, Cap, 12mm-1.25 x 60mm	8
20	39240	DECAL, Warning, Do Not Tow (Included with Item 4.)	2

GENERAL TORQUE SPECIFICATIONS

USE THE FOLLOWING TORQUES WHEN SPECIAL TORQUES ARE NOT GIVEN

Standard American and Metric Cap Screws

AMERICAN STANDARD CAP SCREWS									METRIC CAP SCREWS								
SAE Grade	5				8				Metric Class	8.8				10.9			
Typ. Head Markings									Typ. Head Markings								
Cap Screw	TORQUE				TORQUE				Cap Screw	TORQUE				TORQUE			
Size	FT-LBS		N-m		FT-LBS		N-m		Size	FT-LBS		N-m		FT-LBS		N-m	
Inches	MIN	MAX	MIN	MAX	MIN	MAX	MIN	MAX	Millimeters	MIN	MAX	MIN	MAX	MIN	MAX	MIN	MAX
1/4 - 20	6.25	7.25	8.5	10	8.25	9.5	11	13	M6 x 1.00	6	8	8	11	9	11	12	15
1/4 - 28	8	9	11	12	10.5	12	14	16	M8 x 1.25	16	20	21.5	27	23	27	31	36.5
5/16 - 18	14	15	19	20	18.5	20	25	27	M10 x 1.50	29	35	39	47	42	52	57	70
5/16 - 24	17.5	19	23	26	23	25	31	34	M12 x 1.75	52	62	70	84	75	91	102	123
3/8 - 16	26	28	35	38	35	37	47.5	50	M14 x 2.00	85	103	115	139	120	146	163	198
3/8 - 24	31	34	42	46	41	45	55.5	61	M16 x 2.50	130	158	176	214	176	216	238	293
7/16 - 14	41	45	55.5	61	55	60	74.5	81	M18 x 2.50	172	210	233	284	240	294	325	398
7/16 - 20	51	55	69	74.5	68	75	92	102	M20 x 2.50	247	301	335	408	343	426	465	577
1/2 - 13	65	72	88	97.5	86	96	116	130	M22 x 2.50	332	404	450	547	472	576	639	780
1/2 - 20	76	84	103	114	102	112	138	152	M24 x 3.00	423	517	573	700	599	732	812	992
9/16 - 12	95	105	129	142	127	140	172	190	M27 x 3.00	637	779	863	1055	898	1098	1217	1488
9/16 - 18	111	123	150	167	148	164	200	222	M30 x 3.00	872	1066	1181	1444	1224	1496	1658	2027
5/8 - 11	126	139	171	188	168	185	228	251	<p>NOTE: These values apply to fasteners as received from supplier, dry or when lubricated with normal engine oil. They do not apply if special graphite or moly sulphide greases or other extreme lubricants are used.</p>								
5/8 - 18	152	168	206	228	203	224	275	304									
3/4 - 10	238	262	322	355	318	350	431	474									
3/4 - 16	274	305	371	409	365	402	495	544									
7/8 - 9	350	386	474	523	466	515	631	698									
7/8 - 14	407	448	551	607	543	597	736	809									
1 - 8	537	592	728	802	716	790	970	1070									
1 - 14	670	740	908	1003	894	987	1211	1337									

INSTALLATION INSTRUCTIONS