

Keep with Operator's Manual

**BACKHOE SUBFRAME KIT
65A, 75, 85 BACKHOES
KUBOTA GRAND L30 SERIES TRACTORS**

MODEL	ROPS	CAB
L3130, L3430, L3830	X	X
L4330, L4630	X	X
L5030	X	X

TRACTOR & BACKHOE GENERAL INFORMATION

Complete backhoe mounting requires backhoe subframe kit 2-7278 and channel kit 2-6509.

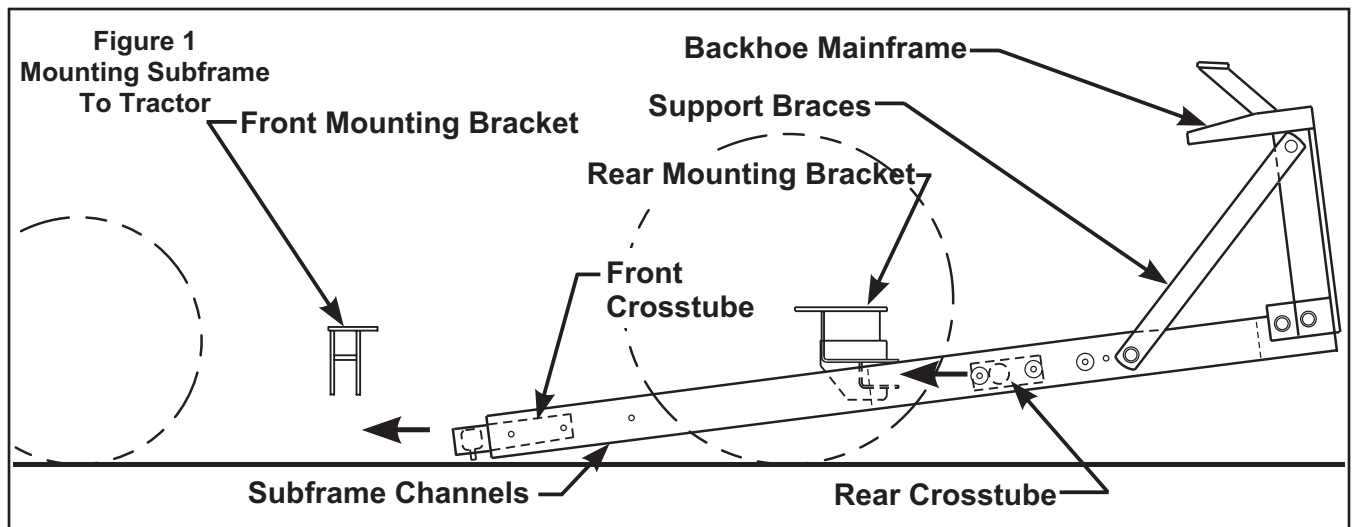
IMPORTANT: Remove linch pins and disconnect supports to disable 3-point hitch arms.

INSTALLING MOUNTING BRACKETS (Figure 3)

1. Temporarily remove drawbar from tractor hitch. Install front mounting bracket (1) to underside of transmission casting using 12mm x 30mm cap screws (7) and 1/2" lock washers (8).
2. Remove six bolts which secure bottom of tractor hitch to rear of tractor.
NOTE: Hitch will be held in place by two bolts at rear of tractor.
3. Install rear mounting bracket (2) to rear of tractor using 14mm x 45mm cap screws (9) and 9/16 lock washers (10). Reattach drawbar and finish securing bracket (2) to tractor hitch using 3/4 x 4" cap screw (18) and 3/4" lock nut (14).

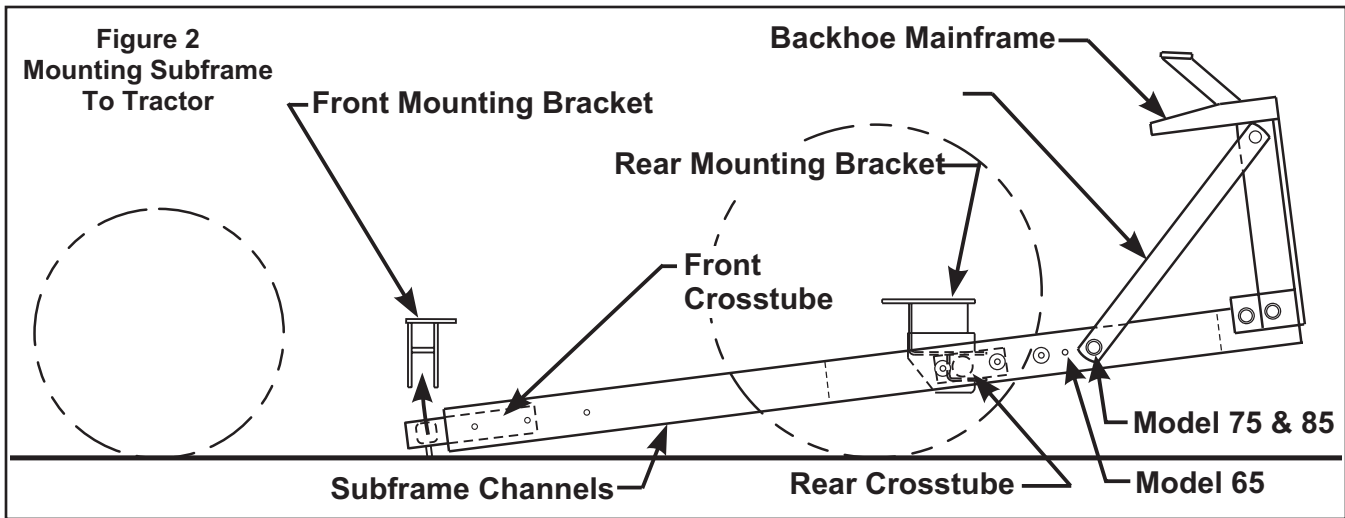
INSTALLING SUBFRAME (Figure 3)

1. Install front and rear mounting tubes (3 & 4) to channels (19 & 20) using 1/2 x 1-1/4" cap screws (11) and 1/2" lock nuts (12).
NOTE: Install mounting tubes (3 & 4) in forward-most set of holes in channels (19 & 20) for each tube.
2. Install subframe assembly to backhoe mainframe using 7/8 x 3" cap screws (15), 7/8" lock washers (17) and 7/8" nuts (16) in rear holes and 3/4 x 2" cap screws (13) and 3/4" lock nuts (14) in front holes.
3. Install support braces (21) in rear set of holes on subframe using 3/4 x 2-3/4" cap screws (23) and 3/4" lock nuts (22) in channels and double nut on backhoe mainframe.
NOTE: Double nut 3/4 x 2-3/4" cap screws (23) using 3/4" lock nuts (22) after torquing first nut to 350 ft.·lbs.



MOUNTING BACKHOE TO TRACTOR

1. Back tractor over subframe close enough to connect to backhoe hydraulic system.
2. Using backhoe hydraulic controls, extend stabilizer cylinders and boom cylinder until rear mounting tube is level with rear mounting bracket and front of subframe is on ground. (See figure 1.)
3. Slowly back tractor until rear mounting tube is seated in rear mounting bracket.
4. Retract boom cylinder and stabilizer cylinders so front of subframe swings up until front mounting tube is seated in front mounting bracket. (See figure 2.)
5. Secure front mounting tube in place using hitch pins (5) and linch pins (6).



PARTS LIST - BACKHOE SUBFRAME KIT

Item	Part No.	Description	Qty.
1	51301	MOUNTING BRACKET, Front	1
2	51312	MOUNTING BRACKET, Rear	1
3	51299	MOUNTING TUBE, Front	1
4	45710	MOUNTING TUBE, Rear	1
5	44892	PIN, Hitch	2
6	44756-1	LINCH PIN	2
7	42672-59	SCREW, Cap, 12mm-1.25 x 30mm	4
8	41837-5	WASHER, Lock, 1/2"	4
9	42672-60	SCREW, Cap, 14mm-1.50 x 45mm	6
10	41837-6	WASHER, Lock, 9/16"	6
11	41838-2	SCREW, Cap, 1/2-13 x 1-1/4"	8
12	41840-5	NUT, Lock, 1/2-13	8
13	41838-8	SCREW, Cap, 3/4-10 x 2"	2
14	41840-8	NUT, Lock, 3/4-10	3
15	41838-53	SCREW, Cap, 7/8-9 x 3"	2
16	41836-9	NUT, Hex, 7/8-9	2
17	41837-9	WASHER, Lock, 7/8"	2
18	41838-71	SCREW, Cap, 3/4-10 x 4", Grade 5	1

PARTS LIST - BACKHOE CHANNEL KIT - 2-6509 - Order Separately

Item	Part No.	Description	Qty.
19	45700-1	CHANNEL, Left	1
20	45700-2	CHANNEL, Right	1
21	44836	BRACKET	2
22	47264-8	NUT, Lock, 3/4-10	8
23	G221135	SCREW, Cap, 3/4-10 x 2-3/4", Grade 8	4

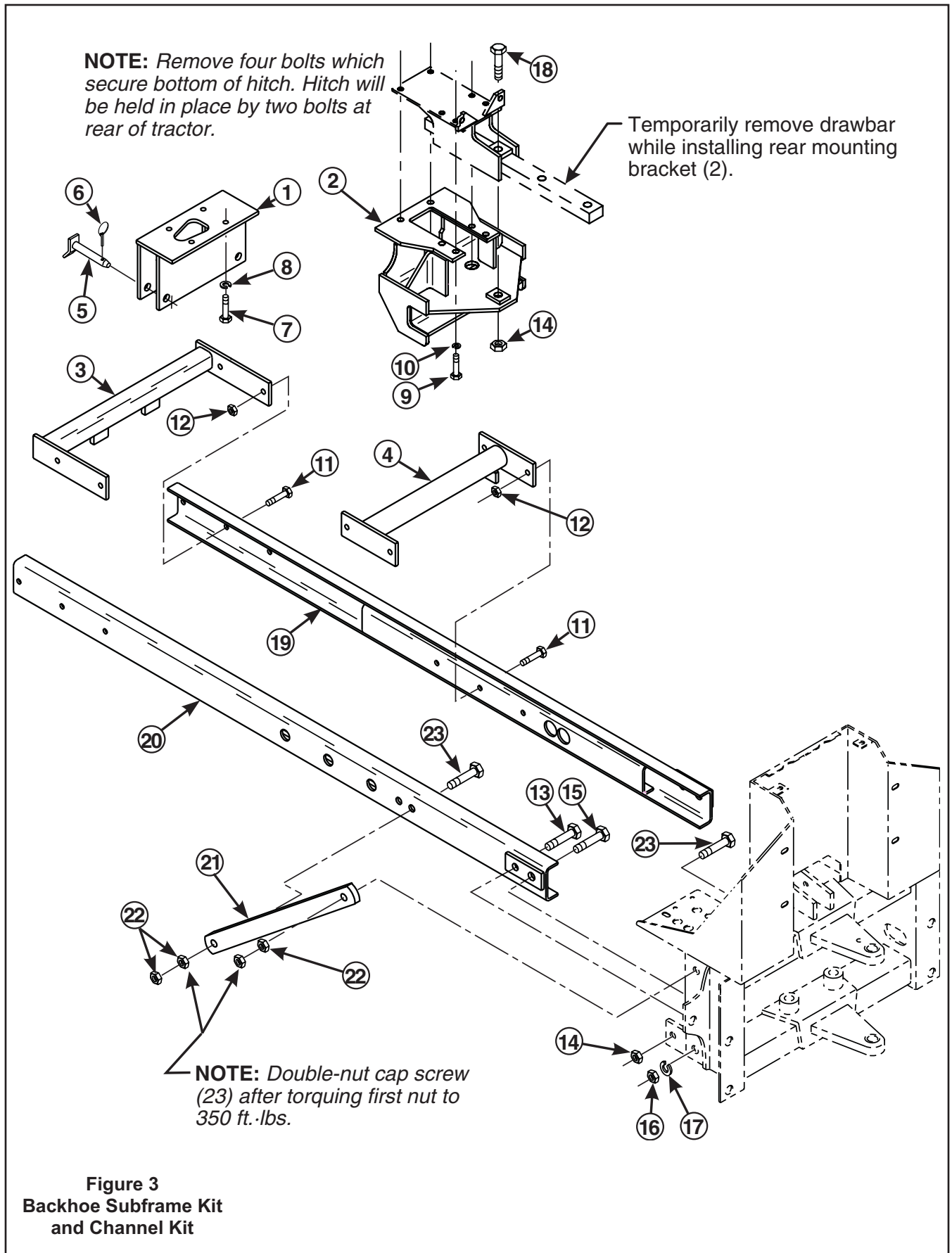


Figure 3
Backhoe Subframe Kit
and Channel Kit

GENERAL TORQUE SPECIFICATIONS

USE THE FOLLOWING TORQUES WHEN SPECIAL TORQUES ARE NOT GIVEN

Standard American and Metric Cap Screws

AMERICAN STANDARD CAP SCREWS									METRIC CAP SCREWS								
SAE Grade	5				8				Metric Class	8.8				10.9			
Typ. Head Markings									Typ. Head Markings								
Cap Screw	TORQUE				TORQUE				Cap Screw	TORQUE				TORQUE			
Size	FT-LBS		N-m		FT-LBS		N-m		Size	FT-LBS		N-m		FT-LBS		N-m	
Inches	MIN	MAX	MIN	MAX	MIN	MAX	MIN	MAX	Millimeters	MIN	MAX	MIN	MAX	MIN	MAX	MIN	MAX
1/4 - 20	6.25	7.25	8.5	10	8.25	9.5	11	13	M6 x 1.00	6	8	8	11	9	11	12	15
1/4 - 28	8	9	11	12	10.5	12	14	16	M8 x 1.25	16	20	21.5	27	23	27	31	36.5
5/16 - 18	14	15	19	20	18.5	20	25	27	M10 x 1.50	29	35	39	47	42	52	57	70
5/16 - 24	17.5	19	23	26	23	25	31	34	M12 x 1.75	52	62	70	84	75	91	102	123
3/8 - 16	26	28	35	38	35	37	47.5	50	M14 x 2.00	85	103	115	139	120	146	163	198
3/8 - 24	31	34	42	46	41	45	55.5	61	M16 x 2.50	130	158	176	214	176	216	238	293
7/16 - 14	41	45	55.5	61	55	60	74.5	81	M18 x 2.50	172	210	233	284	240	294	325	398
7/16 - 20	51	55	69	74.5	68	75	92	102	M20 x 2.50	247	301	335	408	343	426	465	577
1/2 - 13	65	72	88	97.5	86	96	116	130	M22 x 2.50	332	404	450	547	472	576	639	780
1/2 - 20	76	84	103	114	102	112	138	152	M24 x 3.00	423	517	573	700	599	732	812	992
9/16 - 12	95	105	129	142	127	140	172	190	M27 x 3.00	637	779	863	1055	898	1098	1217	1488
9/16 - 18	111	123	150	167	148	164	200	222	M30 x 3.00	872	1066	1181	1444	1224	1496	1658	2027
5/8 - 11	126	139	171	188	168	185	228	251	<p>NOTE: These values apply to fasteners as received from supplier, dry or when lubricated with normal engine oil. They do not apply if special graphite or moly sulphide greases or other extreme lubricants are used.</p>								
5/8 - 18	152	168	206	228	203	224	275	304									
3/4 - 10	238	262	322	355	318	350	431	474									
3/4 - 16	274	305	371	409	365	402	495	544									
7/8 - 9	350	386	474	523	466	515	631	698									
7/8 - 14	407	448	551	607	543	597	736	809									
1 - 8	537	592	728	802	716	790	970	1070									
1 - 14	670	740	908	1003	894	987	1211	1337									

INSTALLATION INSTRUCTIONS