

Keep With Operator's Manual

2408 LOADER LOADER MOUNTING KIT KUBOTA TRACTOR

MODEL	2WD	FWA	ROPS
B2710		X	X
B2910		X	X
B7800		X	X

Loader is compatible with RCK60-27B and RCK72-27B Mid Mount Mowers. 2408 loader is not compatible with Kubota front weights or grille guard.

Mounting brackets can be installed on the tractor using tools ordinarily available. Shut off tractor engine and engage tractor brakes during installation.

PREPARING TRACTOR

1. Remove Kubota attachment plate connecting transmission housing to axle support rail (will be replaced with mounting bracket).
2. Lift hood and remove tractor side panels.
3. Loosen fuel sediment bowl bracket on right side.

NOTE: *Leave all attaching hardware loose until mounting brackets are completely assembled to facilitate assembly and proper alignment.*

INSTALLING MOUNTING BRACKETS (Figure 1)

1. Fasten front mounting bracket (1) sideplates to tractor frame using spacers (3) between plate and frame with 9/16 x 1-1/2 cap screws (7), 9/16 flat washers (11) and 9/16 lock nuts (12). Attach front plate of front mounting bracket (1) to front tractor frame using 1/2 x 1-1/4 cap screws (9) and 1/2 lock nuts (15).

2. Place mid mounting bracket (2) under tractor. Using the forward holes on each side of the mounting bracket (2), loosely attach to corresponding holes on the tractor frame with 14mm x 40mm cap screws (5) and 9/16 lock washers (10). Swing bracket up and attach rear of bracket to transmission housing center top hole using 14mm x 40mm cap screws (5), 9/16 lock washers (10) and 9/16 flat washers (11).

NOTE: *Depress reverse pedal to access rear holes of transmission housing on right side.*

3. Finish securing mid mounting bracket (2) to tractor frame using six 14mm x 1.50mm x 40mm cap screws (5) and 9/16 lock washers (10) in front holes, six 12mm x 1.25mm x 40mm cap screws (6) with 1/2 lock washers (14) in center holes, four 12mm x 1.25mm x 40mm cap screws (4) with 1/2 lock washers (14) and 1/2 flat washers (13) in top rear slot, six 1/2 x 1.50 cap screws (8) with 1/2 flat washers (13) and 1/2 lock nuts (15) in lower rear slots connecting axle support rail.

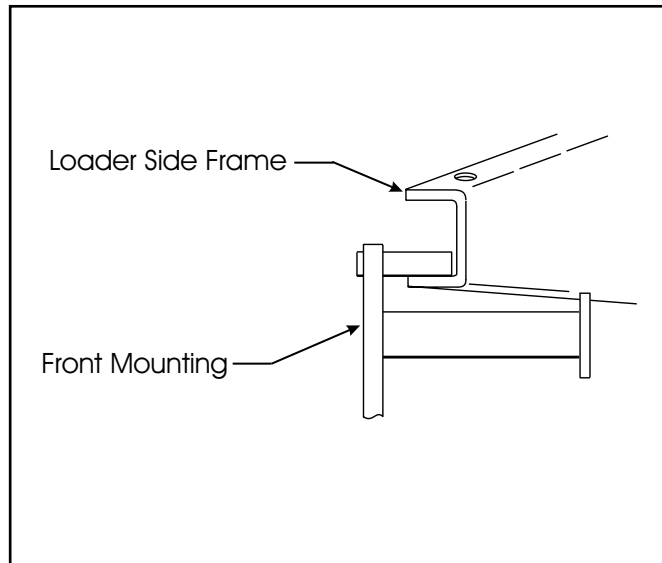
NOTE: *If necessary, rotate rubber boot clamps on FWD to eliminate interference with mid mounting bracket (2).*

4. Tighten all bolts to recommended torque settings (See chart on page 4).
5. Retighten fuel sediment bowl bracket.
6. Replace side panels.

INSTALLING LOADER TO MOUNTING BRACKETS

1. Attach nylon slings around the loader front bumper and use an overhead hoist to support loader while removing pallet attachment brackets from loader. Remove 3/8 lock nuts and shoulder bolts which secure flat brackets to loaders and remove 5/8 lock nuts and carriage bolts which secure angle brackets to loader, then remove pallet. Reinstall hardware to loader to secure pins and hinges to loader.
2. Remove 5/8 x 3 cap screws, washers and lock nuts so hinges can be opened. Lower loader to a horizontal position and attach nylon slings around the loader lift boom arms.
3. Use overhead hoist to raise the loader and position the side frame channels over the front mounting bracket. Slide the loader to the rear until side frame uprights are on the mid mounting tubes.

NOTE: Lower lip of side frame channel must be between front mounting tubes.

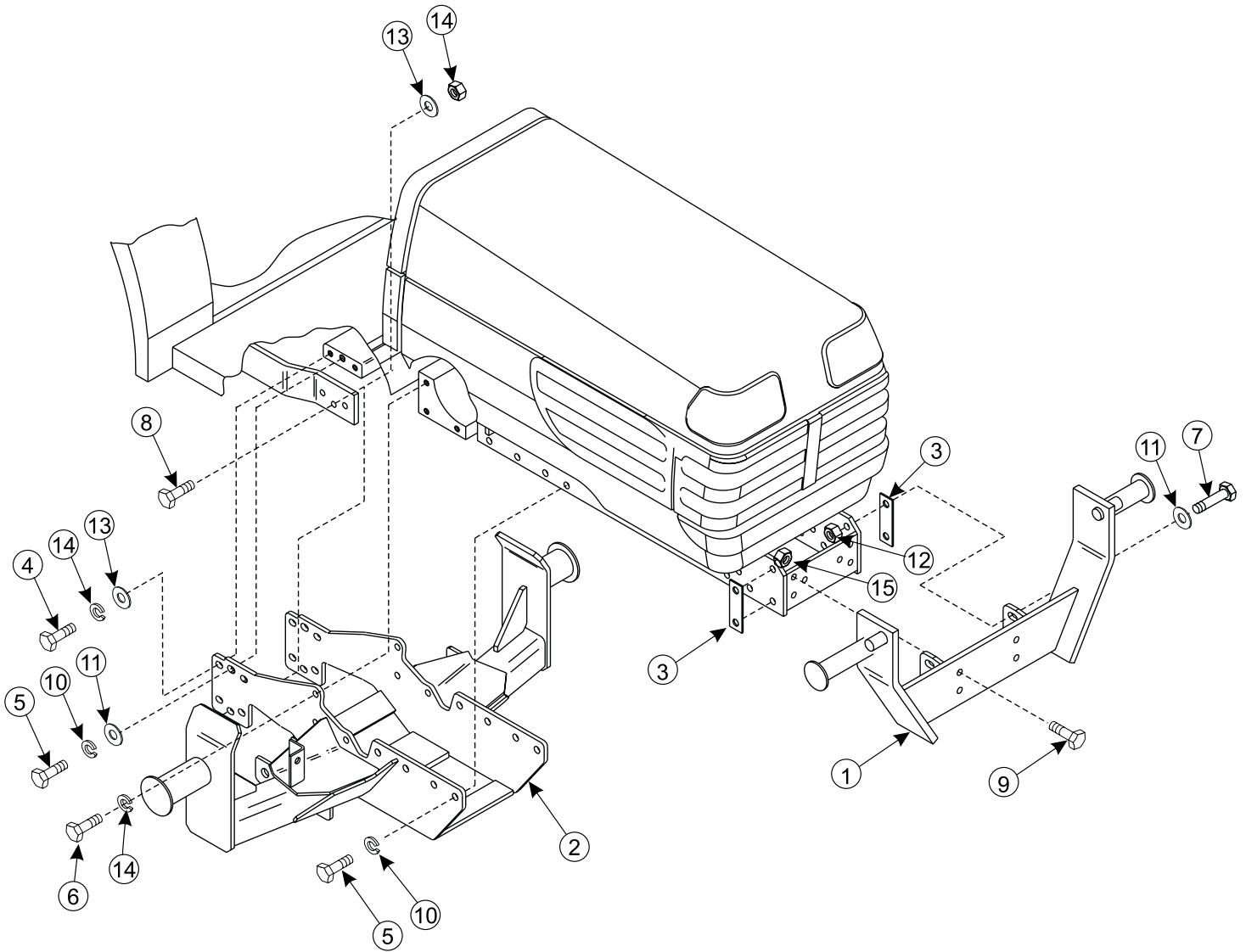


4. Clamp hinges around tubes of mid mounting crosstie. Fasten with 5/8 x 2-1/4 cap screws, flat washers, lock washers and nuts (supplied with loader).
5. Refer to loader owner's manual and plumbing kit instructions to complete loader installation and for location of decals.

PARTS LIST - MOUNTING KIT

ITEM	PART NO.	DESCRIPTION	QTY.
1	51547	FRONT MOUNTING ASSEMBLY	1
2	51538	MID MOUNTING ASSEMBLY	1
3	51548	SPACER PLATE	2
4	42672-69	SCREW, Cap, 12mm x 1.25mm x 40mm	4
5	42672-23	SCREW, Cap, 14mm x 1.50mm x 40mm	10
6	42672-8	SCREW, Cap, 12mm x 1.75mm x 40mm	6
7	41838-52	SCREW, Cap, 9/16 -12 x 1-1/2	4
8	41838-33	SCREW, Cap, 1/2 -13 x 1-1/2	6
9	41838-2	SCREW, Cap, 1/2 -13 x 1-1/4	4
10	41837-6	WASHER, Lock, 9/16	10
11	42502-31	WASHER, Flat, 9/16	6
12	41840-6	NUT, Lock, 9/16 -12	4
13	42502-10	WASHER, Flat, 1/2	10
14	41837-5	WASHER, Lock, 1/2	10
15	41840-5	NUT, Lock, 1/2 -13	10


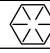
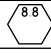
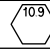
Figure 1
Mount Kit Assembly



GENERAL TORQUE SPECIFICATIONS

USE THE FOLLOWING TORQUES WHEN SPECIAL TORQUES ARE NOT GIVEN

Standard American and Metric Cap Screws

AMERICAN STANDARD CAP SCREWS										METRIC CAP SCREWS								
SAE Grade	5				8				Metric Class	8.8				10.9				
Typ. Head Markings									Typ. Head Markings									
Cap Screw	TORQUE				TORQUE				Cap Screw	TORQUE				TORQUE				
Size	FT·LBS		N·m		FT·LBS		N·m		Size	FT·LBS		N·m		FT·LBS		N·m		
Inches	MIN	MAX	MIN	MAX	MIN	MAX	MIN	MAX	Millimeters	MIN	MAX	MIN	MAX	MIN	MAX	MIN	MAX	
1/4 - 20	6.25	7.25	8.5	10	8.25	9.5	11	13	M6 x 1.00	6	8	8	11	9	11	12	15	
1/4 - 28	8	9	11	12	10.5	12	14	16	M8 x 1.25	16	20	21.5	27	23	27	31	36.5	
5/16 - 18	14	15	19	20	18.5	20	25	27	M10 x 1.50	29	35	39	47	42	52	57	70	
5/16 - 24	17.5	19	23	26	23	25	31	34	M12 x 1.75	52	62	70	84	75	91	102	123	
3/8 - 16	26	28	35	38	35	37	47.5	50	M14 x 2.00	85	103	115	139	120	146	163	198	
3/8 - 24	31	34	42	46	41	45	55.5	61	M16 x 2.50	130	158	176	214	176	216	238	293	
7/16 - 14	41	45	55.5	61	55	60	74.5	81	M18 x 2.50	172	210	233	284	240	294	325	398	
7/16 - 20	51	55	69	74.5	68	75	92	102	M20 x 2.50	247	301	335	408	343	426	465	577	
1/2 - 13	65	72	88	97.5	86	96	116	130	M22 x 2.50	332	404	450	547	472	576	639	780	
1/2 - 20	76	84	103	114	102	112	138	152	M24 x 3.00	423	517	573	700	599	732	812	992	
9/16 - 12	95	105	129	142	127	140	172	190	M27 x 3.00	637	779	863	1055	898	1098	1217	1488	
9/16 - 18	111	123	150	167	148	164	200	222	M30 x 3.00	872	1066	1181	1444	1224	1496	1658	2027	
5/8 - 11	126	139	171	188	168	185	228	251	<p>NOTE: These values apply to fasteners as received from supplier, dry or when lubricated with normal engine oil. They do not apply if special graphite or molysulphide greases or other extreme lubricants are used.</p>									
5/8 - 18	152	168	206	228	203	224	275	304										
3/4 - 10	238	262	322	355	318	350	431	474										
3/4 - 16	274	305	371	409	365	402	495	544										
7/8 - 9	350	386	474	523	466	515	631	698										
7/8 - 14	407	448	551	607	543	597	736	809										
1 - 8	537	592	728	802	716	790	970	1070										
1 - 14	670	740	908	1003	894	987	1211	1337										

INSTALLATION INSTRUCTIONS