

Keep with Operator's Manual

LOADER MOUNTING KIT 2412 LOADER JOHN DEERE TRACTORS

MODEL	2WD	FWA	ROPS	CAB
6615	X	X	X	X
6715	X	X	X	X

TRACTOR AND MOUNTING KIT GENERAL INFORMATION

Mounting brackets can be installed on tractor and loader using tools ordinarily available, including an overhead hoist with sling, standard and metric wrenches, and a torque wrench.

Hose kit to tractor loader control valve is required to plumb loader to tractor. It must be installed as part of initial loader mounting, but after loader mounting brackets have been installed. Instructions are provided in "Installing Loader to Mounting Brackets" section and with hose kit.

Loader mid mounting brackets (1 & 2) can be installed more easily if optional front fenders are removed from tractor before installing.

Loader is not compatible with front weight bracket. If tractor is equipped with front weight bracket, remove any front weights and weight bracket before installing loader front mounting bracket.

Check tire clearances when loader installation is complete and adjust tractor tread width or steering stops, if necessary, to provide adequate tire clearance.

Shut off tractor engine and engage tractor brakes during installation.

INSTALLING LOADER MOUNTING BRACKETS (Figure 1)

NOTE: Leave all attaching hardware loose (unless noted otherwise) until mounting kit is completely assembled to facilitate assembly and proper alignment. Tighten all hardware to torques specified in general torque specifications table.

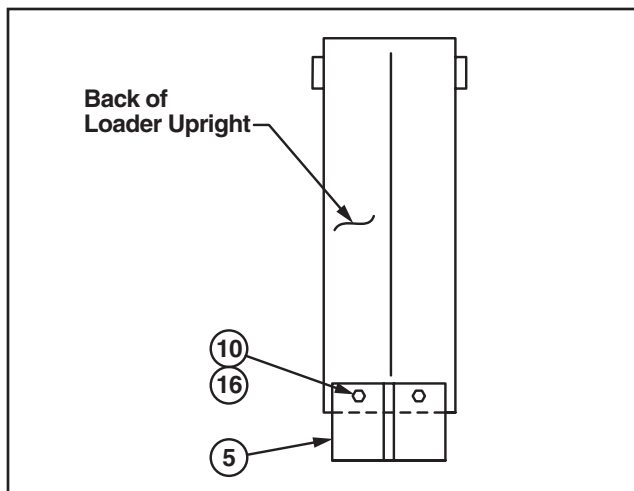
1. Fasten front mounting bracket (3) to front of tractor casting using 20mm x 50mm cap screws (7) and lock washers (11).
2. Remove four 20mm flange head bolts (two each side at rear of bolt pattern) from sides of tractor front frame which correspond to lower rear holes used to attach mid mounting brackets (1 & 2).

NOTE: Do not re-use removed 20mm flange head bolts with loader mounting brackets.

3. Support left and right mid mounting brackets (1 & 2) to sides of tractor front frame and fasten to tractor frame using two 20mm x 60mm cap screws (6) and lock washers (11) each side, in two lower rear holes of frame hole pattern only.
4. Use 20mm x 60mm cap screws (6), lock washers (11) and hex nuts (14) in remaining holes which align with bolt pattern to secure mid mounting brackets (1 & 2) to tractor frame.
5. Attach spacer plates (5) to back of each loader upright using 3/8 x 1" cap screws (10) and lock nuts (16).



CAUTION: Spacer plates (5) keep hinge from opening too far. If spacer plates are not installed, cross tube of front yoke (4) may miss stop of front mounting bracket (3) when mounting loader.



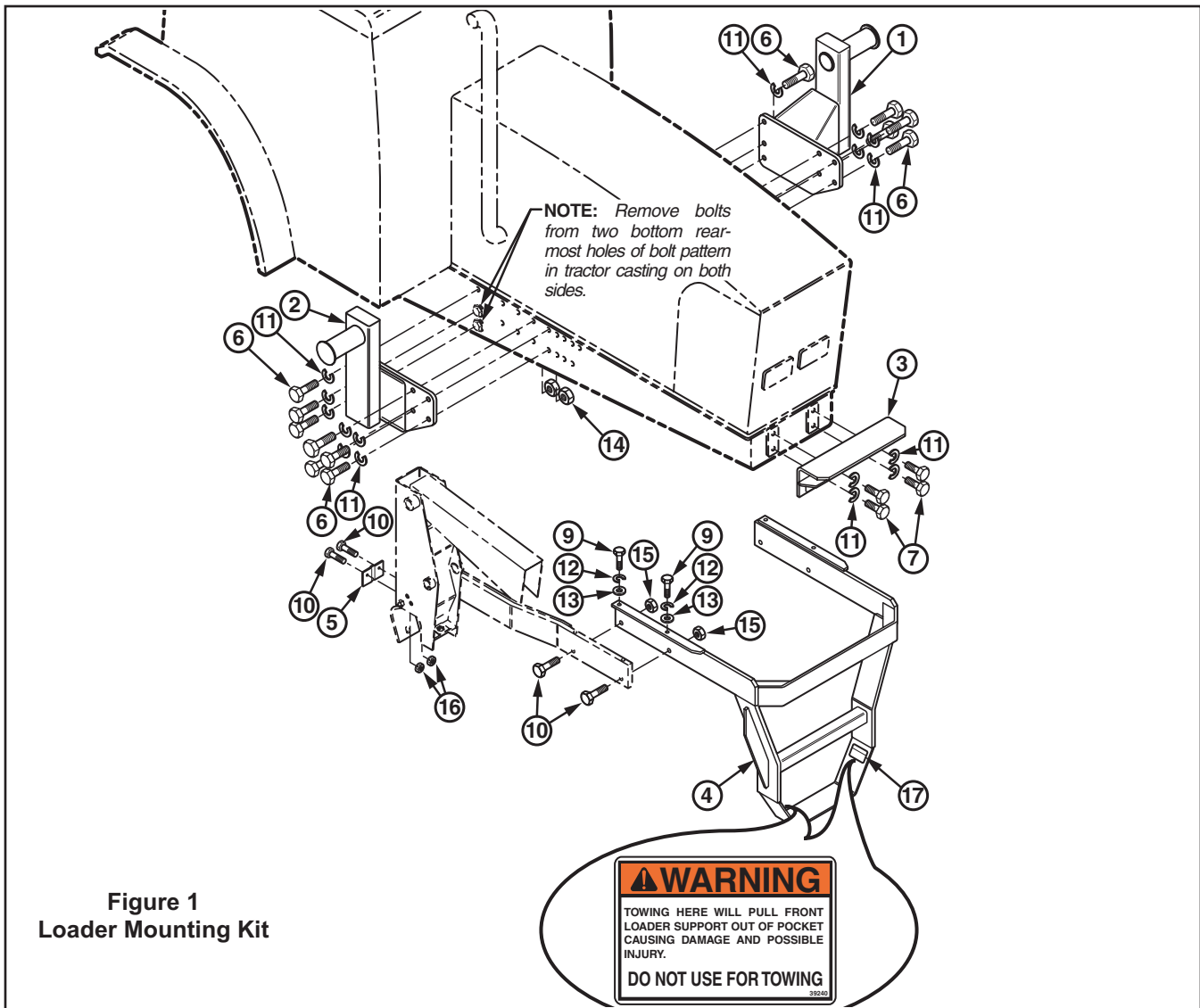


Figure 1
 Loader Mounting Kit

PARTS LIST – MOUNTING KIT

Item	Part No.	Description	Qty.
1	51699-1	BRACKET, Mounting, Mid, Left	1
2	51699-2	BRACKET, Mounting, Mid, Right	1
3	51704	BRACKET, Mounting, Front	1
4	51876	BRACKET, Front Yoke	1
5	44248	SPACER, Plate	2
6	49040-15	SCREW, Cap, 20mm-2.50 x 60mm, Class 10.9	14
7	49040-6	SCREW, Cap, 20mm-2.50 x 50mm Class 10.9	4
8	41838-7	SCREW, Cap, 3/4-10 x 2-1/2" Grade 5	4
9	41838-27	SCREW, Cap, 5/8-11 x 2" Grade 5	4
10	41838-11	SCREW, Cap, 3/8-16 x 1" Grade 5	4
11	48093-2	WASHER, Lock, 20mm	18
12	41837-7	WASHER, Lock, 5/8"	4
13	42502-12	WASHER, Flat, 5/8"	4
14	51796-1	NUT, Hex, 20mm x 2.50mm, Class 10.9	10
15	41840-8	NUT, Lock, 3/4-10	4
16	41840-3	LOCK, Nut, 3/8-16	4
17	39240	DECAL, WARNING, Do Not Tow (Included with Item 4)	2

INSTALLING YOKE

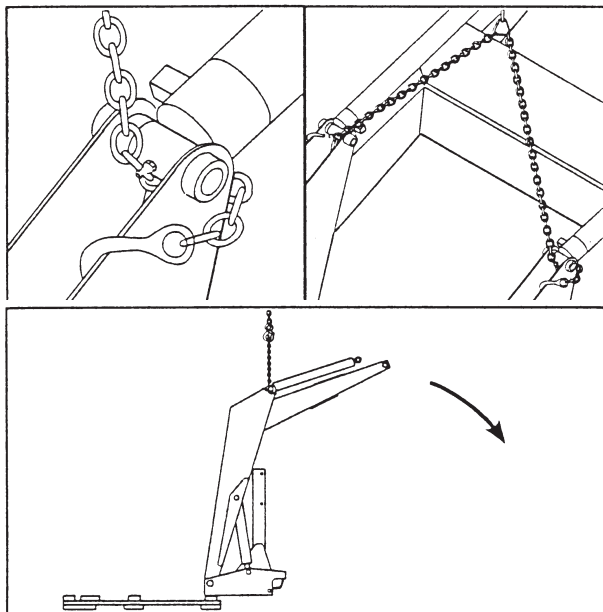


WARNING: To avoid injury during installation of loader, do not permit bystanders within ten feet of loader.

1. Loop hoist chain under each lift cylinder and hook on loader boom arm. Using overhead hoist to support loader, remove hardware which secures loader to pallet. Lift loader slightly to allow pallet to be repositioned.



CAUTION: Do not damage grease fitting on end of cylinder. Be sure chain does not pinch lift cylinder hose.



2. Position pallet at rear of loader to facilitate lowering. Lower loader from vertical shipping position to horizontal position leaving enough room to install yoke. (Scraps of cardboard may be used to protect paint.) Install yoke assembly (4) using 3/4 x 2-1/2" cap screws (8) and lock nuts (15) in side holes and 5/8 x 2" cap screws (9), lock washers (12), and flat washers (13) in top holes. Lower loader to ground.

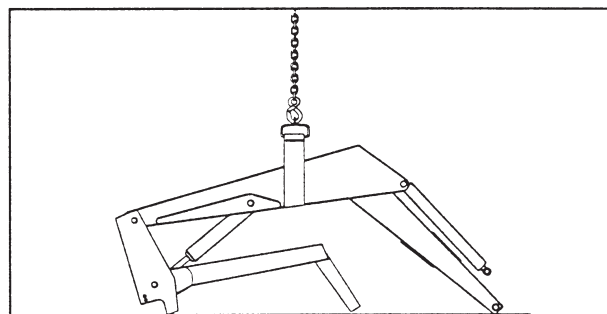
NOTE: It may be necessary to clamp side frames together to align 5/8" holes in top of yoke with holes in side frames.

INSTALL HOSE KIT TO LOADER

Install hose kit to loader. Refer to instructions provided with hose kit.

INSTALLING LOADER ONTO MOUNTING BRACKETS

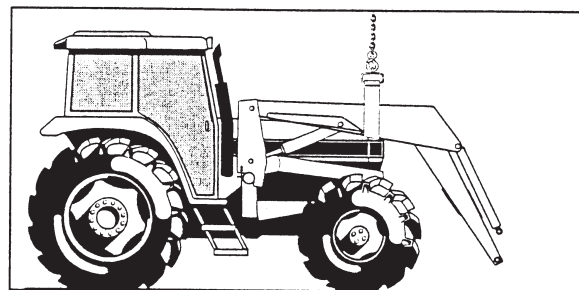
1. Back tractor directly behind loader, facing in opposite direction.
2. Connect hoses from loader to tractor rear remotes.
3. Using overhead hoist to steady loader, slowly cycle lift and bucket cylinders several times to purge air from system. Retract cylinders and shut off engine. Replenish fluid in tractor hydraulic system.
4. Disconnect hoses from tractor. Turn tractor around and position it behind loader. Set tractor brakes.
5. Position a pair of nylon slings around upper boom, directly in front of gussets. Using overhead hoist, lift loader off ground. Remove lock nut and washer from hinge and swing each hinge open.



6. Block hinge open using 3/4 x 3" cap screws and flat washers. Store 3/4" flex-lock nuts on extra threads of hinge bolts.
7. Using overhead hoist, lift loader and position on mid mounting tubes. Move loader back until yoke tube engages in front mounting bracket and hinges can clamp around mid mounting tubes.



CAUTION: Take care to avoid side of tractor platform when positioning loader onto mid mounting brackets.



8. Clamp hinges onto mid mounting tubes with 3/4 x 3" cap screws, flat washers, and flex-lock nuts, removed earlier.

IMPORTANT: Be sure to use flex-lock nuts to clamp hinge. Tighten flex-lock nuts against hinge securely, but not to more than 125ft.·lbs. of torque.

INSTALLING LOADER ONTO TRACTOR AND MOUNTING BRACKETS. (Continued)

10. Connect hoses to tractor hydraulics. Refer to hose kit instructions for proper connections. Route hoses under cab or platform, securing hoses away from tires or other moving parts.
11. Adjust front wheel tread settings or steering stops, if necessary to provide a minimum 3/4" clearance between front tires and any part of loader with cylinders fully retracted and front axle fully oscillated. Refer to tractor operator's manual for adjustment procedures.

INSTALLING BUCKET OR ATTACHMENT.

Refer to loader operator's manual to install bucket or optional attachment and to adjust level indicator.

GENERAL TORQUE SPECIFICATIONS

USE THE FOLLOWING TORQUES WHEN SPECIAL TORQUES ARE NOT GIVEN

Standard American and Metric Cap Screws

AMERICAN STANDARD CAP SCREWS									METRIC CAP SCREWS								
SAE Grade	5				8				Metric Class	8.8				10.9			
Typ. Head Markings									Typ. Head Markings								
Cap Screw	TORQUE				TORQUE				Cap Screw	TORQUE				TORQUE			
Size	FT·LBS		N·m		FT·LBS		N·m		Size	FT·LBS		N·m		FT·LBS		N·m	
Inches	MIN	MAX	MIN	MAX	MIN	MAX	MIN	MAX	Millimeters	MIN	MAX	MIN	MAX	MIN	MAX	MIN	MAX
1/4 - 20	6.25	7.25	8.5	10	8.25	9.5	11	13	M6 x 1.00	6	8	8	11	9	11	12	15
1/4 - 28	8	9	11	12	10.5	12	14	16	M8 x 1.25	16	20	21.5	27	23	27	31	36.5
5/16 - 18	14	15	19	20	18.5	20	25	27	M10 x 1.50	29	35	39	47	42	52	57	70
5/16 - 24	17.5	19	23	26	23	25	31	34	M12 x 1.75	52	62	70	84	75	91	102	123
3/8 - 16	26	28	35	38	35	37	47.5	50	M14 x 2.00	85	103	115	139	120	146	163	198
3/8 - 24	31	34	42	46	41	45	55.5	61	M16 x 2.50	130	158	176	214	176	216	238	293
7/16 - 14	41	45	55.5	61	55	60	74.5	81	M18 x 2.50	172	210	233	284	240	294	325	398
7/16 - 20	51	55	69	74.5	68	75	92	102	M20 x 2.50	247	301	335	408	343	426	465	577
1/2 - 13	65	72	88	97.5	86	96	116	130	M22 x 2.50	332	404	450	547	472	576	639	780
1/2 - 20	76	84	103	114	102	112	138	152	M24 x 3.00	423	517	573	700	599	732	812	992
9/16 - 12	95	105	129	142	127	140	172	190	M27 x 3.00	637	779	863	1055	898	1098	1217	1488
9/16 - 18	111	123	150	167	148	164	200	222	M30 x 3.00	872	1066	1181	1444	1224	1496	1658	2027
5/8 - 11	126	139	171	188	168	185	228	251	<p>NOTE: These values apply to fasteners as received from supplier, dry or when lubricated with normal engine oil. They do not apply if special graphite or molysulphide greases or other extreme lubricants are used.</p>								
5/8 - 18	152	168	206	228	203	224	275	304									
3/4 - 10	238	262	322	355	318	350	431	474									
3/4 - 16	274	305	371	409	365	402	495	544									
7/8 - 9	350	386	474	523	466	515	631	698									
7/8 - 14	407	448	551	607	543	597	736	809									
1 - 8	537	592	728	802	716	790	970	1070									
1 - 14	670	740	908	1003	894	987	1211	1337									

INSTALLATION INSTRUCTIONS