

Keep with Operators Manual

**LOADER MOUNTING KIT**  
**2409 LOADER**  
**CUB CADET 8404 & KIOTI DK40 TRACTORS AFTER S.N. 261500001**

Mounting brackets can be installed using tools ordinarily available.

**NOTE:** Leave all hardware loose until loader is completely assembled to facilitate alignment. Torque hardware to specifications listed in loader manual.

**TRACTOR PREPARATION**

1. Remove tractor side panels and front grill to prevent damage during installation of tractor mounting.
2. Loosen lower side panel support by removing two rear bolts from both left and right side of tractor.
3. Remove all dust plugs from transmission housing on left and right side of tractor.
4. Remove cap screws securing inspection cover plate from right side of clutch housing. Leave original gasket in place. Inspection opening will be covered by loader midmount bracket.

**INSTALLING MOUNTING BRACKETS**

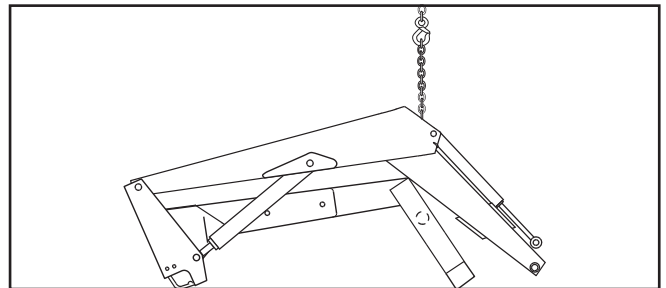
1. Install front mounting bracket (3) to tractor frame using 5/8 x 1-1/2 cap screws (16) and 5/8 lock nuts (12).
2. Install midmountings (1 & 2) to clutch housing and mounting pad behind front axle using 14MM x 35MM cap screws (17) and 9/16 lock washers (18) and flat washers over slotted holes (15).
3. Install left and right strut assemblies (5 & 6) to rear axle casting placing tube (8) between strut and rear axle casting. Attach using 12MM x 60MM cap screws (19) and 1/2 lock washers (15). Attach crosstie (7) to bottom of midmountings (1 & 2) and fasten struts (5 & 6) and crosstie to midmountings using 1/2 x 2 cap screws (13) and 1/2 lock nuts (14).
4. Tighten and torque hardware to torque specifications shown on torque chart in loader operator's manual.
5. Replace and tighten bolts in lower side panel supports on both sides of tractor.
6. Install tractor side panels and front grille.

**INSTALLING LOADER TO MOUNTING BRACKETS**



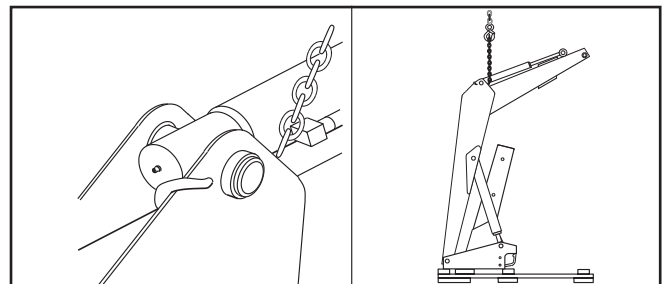
**WARNING:** To avoid injury during installation of quick attach loader, do not permit bystanders within ten feet of loader.

1. Loop chain under each lift cylinder and hook on loader boom arm. Using overhead hoist to support loader remove hardware securing loader to pallet. Lift loader and remove pallet.



**CAUTION:** Do not damage grease fitting on end of cylinder. Be sure chain does not pinch lift cylinder.

2. Using overhead hoist, lower loader from vertical shipping position to horizontal position leaving enough room to install yoke (scraps of cardboard may be used to protect paint). Install yoke assembly (4) using 3/4 x 2-1/2 cap screws (10) and 3/4 lock nuts (11). Lower loader completely to the ground.



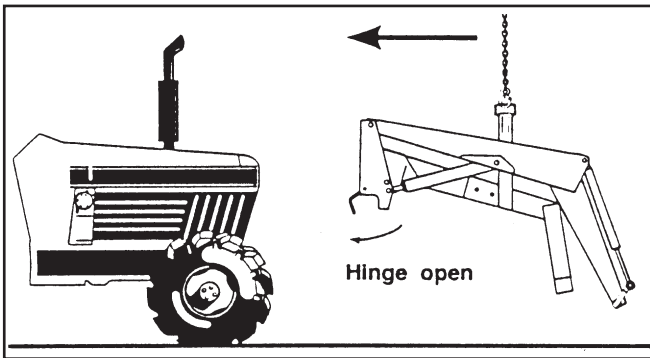
**NOTE:** Hardware connecting yoke to loader sideframes should be snug but do not torque completely. After loader has been mounted to tractor and aligned with midmounting brackets and front mounting brackets, torque hardware to 239-262 ft. lb.

3. Install hose or valve kit to tractor and loader. Refer to assembly manual provided for installation instructions.

## 2-7324

### INSTALLING LOADER TO MOUNTING BRACKETS (Cont.)

4. Position tractor close enough so plumbing can be connected to tractor. Route hoses loosely to allow maximum reach. Using nylon straps reposition overhead hoist to loader boom arms near pivot point to side frames.
5. Operate loader control valve to extend lift cylinders until front yoke is resting on ground and side frame uprights will clear front tires. Shut off tractor engine and engage tractor brakes. Reroute loader hoses to inside of right midmount bracket. Remove locknut and washer from loader hinge and swing each hinge open.



6. Start tractor engine, release tractor brakes and slowly drive forward while operating lift control levers to retract lift cylinders. Position loader so hinges hook over mid mounting tubes. Use of overhead hoist will facilitate positioning loader into mid mounting tubes.

**IMPORTANT:** Position loader uprights so mid mounting tubes are tight against hinges until loader has finished rotating so loader front bumper tube does not hit lower flange of front mounting channel.

7. With tractor in neutral, retract lift cylinders, bringing side frame up so front yoke tube contacts lower surface of tractor frame. Move tractor ahead until front yoke tube engages in front mounting channel and upright hinges can clamp around mid mounting tube. Engage tractor brakes and shut off tractor engine.
8. Clamp hinges to midmounting tubes with 5/8 flat washers, 5/8 lock washers and 5/8 hex nuts (supplied with loader).

9. Start tractor engine and slowly cycle lift and bucket cylinders several times to purge air out of system, then retract cylinders and shut off tractor engine. Add additional tractor hydraulic fluid as specified in tractor owners manual to bring level of hydraulic fluid up to full.

**IMPORTANT:** Be sure to use lock washers and hex nuts to clamp hinge. Tighten flex-lock nuts against hinge securely, but not to more than 125 ft.-lb. torque.

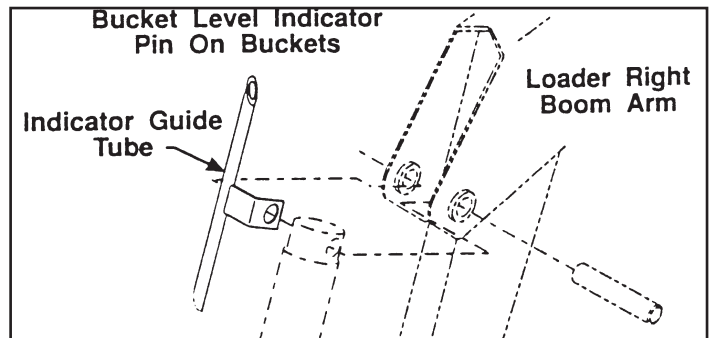
10. Adjust front wheel tread settings or steering stops, if necessary to prevent interference between tires and loader. Refer to tractor operator's manual for adjustment procedures.

### INSTALLING BUCKET

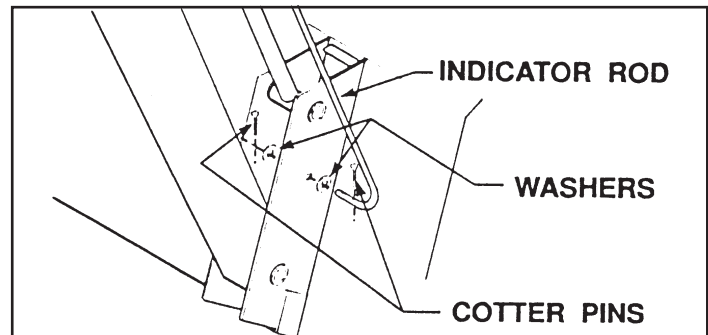
Refer to instruction sheet for instructions on installing bucket.

### INSTALLING BUCKET LEVEL INDICATOR

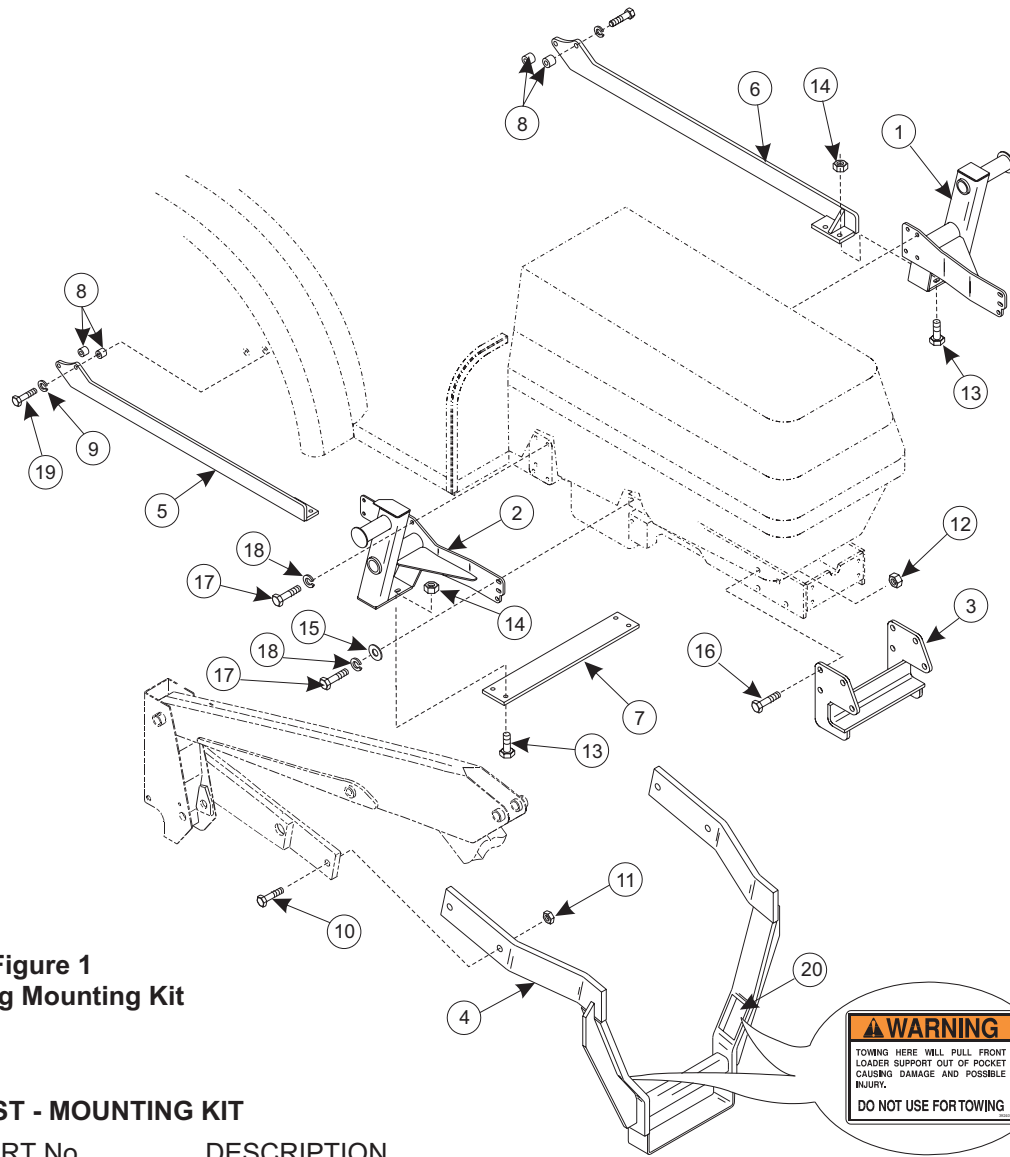
1. Attach indicator guide tube to cylinder pin. Guide tube is positioned to outside of boom.



2. Slide bucket level indicator rod through guide tube. Attach other end of rod with 1/8 x 1 cotter pins and 3/8 flat washers.



3. Locate tractor and loader on level surface. With bottom of bucket resting on surface, cut off excess rod flush with end of guide tube or paint exposed rod a contrasting color.



**Figure 1**  
**Installing Mounting Kit**

**PARTS LIST - MOUNTING KIT**

ITEM	PART No.	DESCRIPTION	QTY.
1	51609	MIDMOUNT, Left	1
2	51610	MIDMOUNT, Right	1
3	50366	FRONT MOUNTING	1
4	51137	YOKE ASSEMBLY With Decals	1
5	51125-2	STRUT ASSEMBLY, Right	1
6	51125-1	STRUT ASSEMBLY, Left	1
7	50382	CROSSTIE	1
8	43395-8	TUBE	4
9	41837-5	WASHER, Lock, 1/2	4
10	41838-7	SCREW, Cap, 3/4-10 x 2-1/2	4
11	41840-8	NUT, Lock, 3/4-10	4
12	41840-7	NUT, Lock, 5/8-11	8
13	41838-13	SCREW, Cap, 1/2-13 x 2.00	4
14	41840-5	NUT, Lock, 1/2-13	4
15	42502-31	WASHER, Flat, 9/16	4
16	41838-29	SCREW, Cap, 5/8-11 x 1-1/2	8
17	42672-48	SCREW, Cap, 14mm-1.50 x 35mm	14
18	41837-6	WASHER, Lock, 9/16	14
19	42672-49	SCREW, Cap, 12mm-1.25 x 60mm	4
20	39240	DECAL, Warning	2

# **INSTALLATION INSTRUCTIONS**