

Keep with Operators Manual

LOADER MOUNTING KIT 2491 LOADER KIOTI DK55

| MODEL | 2WD | FWA | CAB | LESS CAB |
|-------|-----|-----|-----|----------|
| DK55 | | X | X | X |

Mount kit can be installed using tools ordinarily available. Shut off engine and engage brakes during installation.

NOTE: Leave all attaching hardware loose until loader is completely assembled to facilitate assembly and proper alignment. When special torques are not given, torque hardware to specifications listed on page 5.

TRACTOR PREPARATION

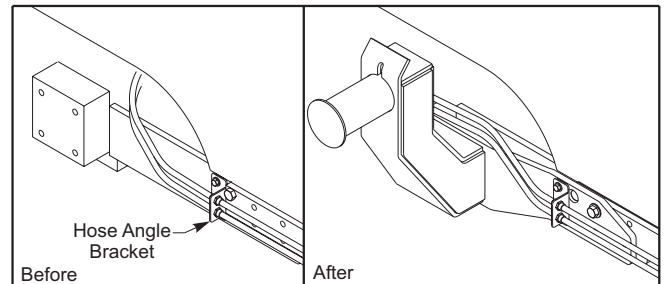
1. Shut off engine and engage brakes during installation of mounting kit.
2. If tractor is equipped with front weights, they should be removed.
3. Raise hood and remove hood side panels to prevent damage during loader mounting installation.
4. Remove dust plugs from tractor clutch housing casting and from three holes on each side of tractor to rear of front axle.
5. Tractor steering stops must be adjusted to provide a minimum clearance of 3/4" between front tire and any part of loader on full left and right lock with front axle fully oscillated. Adjustment must be made with lift cylinders fully retracted. Refer to tractor operator's manual for steering stop adjustment.

INSTALLING LOADER MOUNTING BRACKETS (Figure 1)

NOTE: Unless specified, leave all attaching hardware loose until mounting brackets are completely installed to facilitate assembly and proper alignment of mounting brackets.

1. Attach front mounting bracket (3) using 16MM x 35MM cap screws (7) and 5/8 lock washers (9).

2. Attach left midmounting (1) to tractor clutch housing area using four 14MM x 45MM cap screws (8) and 9/16 lock washers (10). Also to the three holes to the rear of tractor front axle using three 14MM x 45MM cap screws (8), 9/16 lock washers (10), and 9/16 flat washers (11).
3. A) On right side of tractor, remove bolts from hose angle bracket to allow hoses to hang loose. Hoses may need to be re-routed to avoid pinching by right midmounting (2).

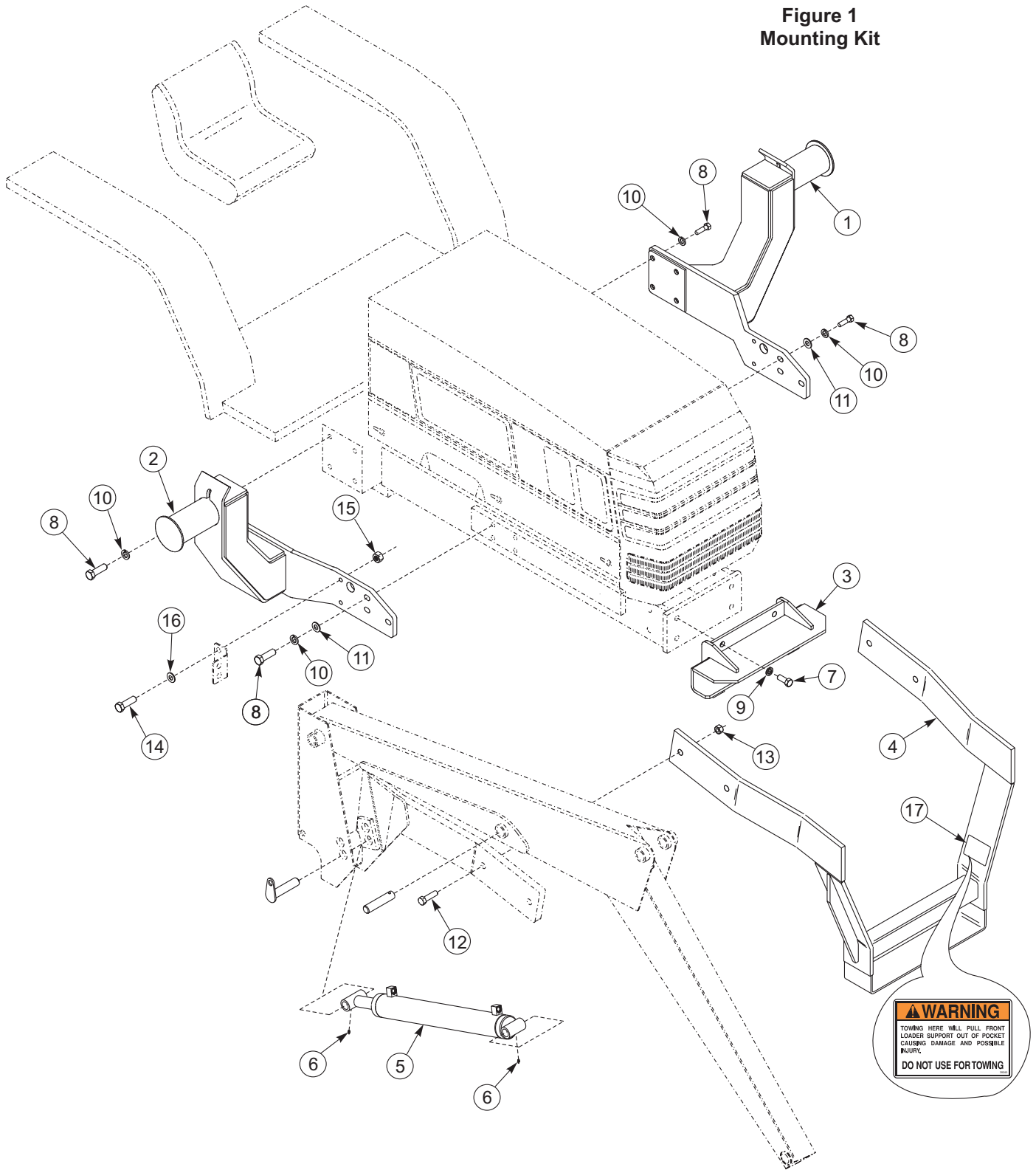


- B) Attach right midmounting (2) to tractor clutch housing area using four 14MM x 45MM cap screws (8) and 9/16 lock washers (10). Also to the three holes to rear of tractor front axle using three 14MM x 45MM cap screws (8), 9/16 lock washers (10), and 9/16 flat washers (11).

- C) Reattach hose angle bracket to right midmount using 3/8 x 1-1/4 cap screw (14), 3/8 flat washer (16) and 3/8 lock nut (15).

4. Torque 14MM hardware to 109 ft.-lbs torque and 16MM hardware to 142 ft.-lbs torque.
5. Reinstall hood side panels and lower hood to locked position.

Figure 1
Mounting Kit



PARTS LIST - MOUNTING KIT

| ITEM | Part No. | DESCRIPTION | QTY. |
|------|----------|-----------------------------|------|
| 1 | 51736-1 | MIDMOUNTING ASSEMBLY, Left | 1 |
| 2 | 51736-2 | MIDMOUNTING ASSEMBLY, Right | 1 |
| 3 | 51731 | FRONT MOUNTING ASSEMBLY | 1 |
| 4 | 51741 | YOKE ASSEMBLY, with Decals | 1 |
| 5 | 43129 | LIFT CYLINDER ASSEMBLY | 2 |
| 6 | 6075-4 | FITTING, Grease, 1/4-28 STR | 4 |
| 7 | 42672-26 | HHCS, 16MM-1.50 x 35MM | 4 |
| 8 | 42672-60 | HHCS, 14MM-1.50 x 45MM | 14 |
| 9 | 41837-7 | WASHER, Lock, 5/8 | 4 |
| 10 | 41837-6 | WASHER, Lock, 9/16 | 14 |
| 11 | 42502-31 | WASHER, Flat, 9/16 W-STD | 6 |
| 12 | 41838-7 | HHCS, 3/4-10 x 2.50 | 4 |
| 13 | 41840-8 | NUT, Lock, 3/4-10 | 4 |
| 14 | 41838-9 | HHCS, 3/8-16 x 1.25 | 2 |
| 15 | 41840-3 | NUT, Lock 3/8-16 | 2 |
| 16 | 42502-8 | WASHER, Flat, 3/8 | 2 |
| 17 | 39240 | DECAL, Warning | 2 |

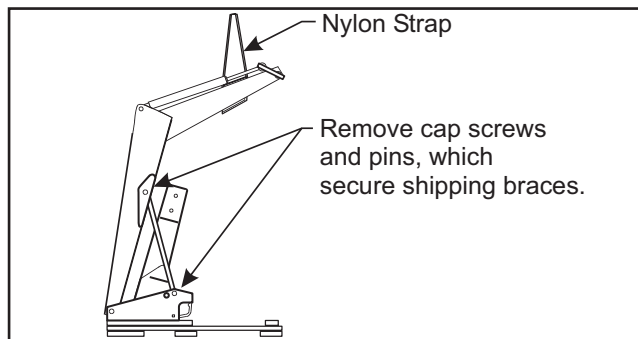
INSTALLING LIFT CYLINDERS

1. Install grease fittings (6) into threaded holes in base and rod ends of lift cylinders (5). Install grease fittings (6) so they are opposite cylinder ports.



WARNING: Be Sure to support loader using an overhead hoist. Installed lift cylinders will not support loader in upright position. Boom may fall causing serious personal injury.

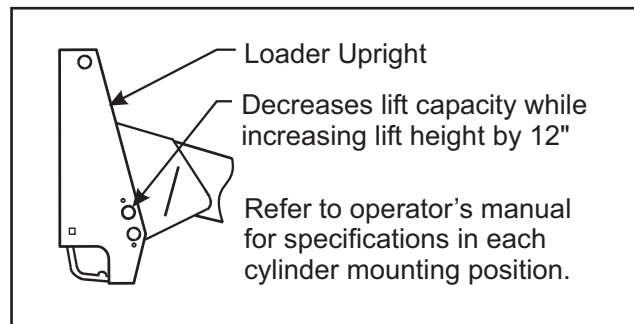
2. Loop nylon strap around center of boom crossmember. Using overhead hoist to support loader, temporarily remove cap screws and pins which secure shipping braces.



3. Install lift cylinders (5) with base end connected to boom arm and hydraulic ports toward boom arm, using hardware removed earlier when shipping braces were removed.

NOTE: Pin rod ends of cylinders into loader uprights first, then pin base end to loader boom arms.

Refer to the following illustration for an explanation of cylinder rod attachment options.



4. One hose at a time, to avoid error when reconnecting, disconnect lift cylinder hoses from loader boom oil lines, connect lift cylinders, and then reconnect to loader boom oil lines.

NOTE: Lift cylinder hoses must be free to rotate while being connected to lift cylinder ports.

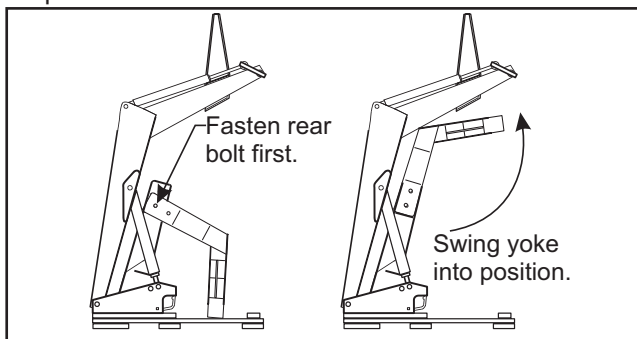
INSTALLING YOKE ONTO LOADER



WARNING: Be sure to support loader using an overhead hoist. Installed lift cylinders will not support loader in upright position. Boom may fall causing serious personal injury.

Install yoke assembly (4) using 3/4 x 2-1/2 cap screws (12) and 3/4 lock nuts (13). Install rear cap screws first, then swing yoke into position and install front cap screws.

NOTE: Tighten hardware connection yoke to loader side frames snug, but do not torque completely. After loader has been mounted to tractor and aligned with midmounting brackets and front mounting brackets, torque hardware to 239-262 ft.-lb.

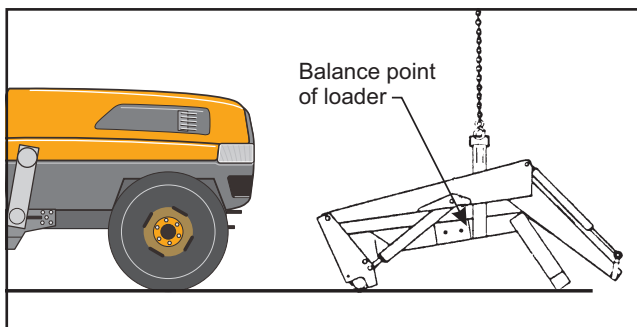


INSTALLING LOADER TO MOUNTING BRACKETS

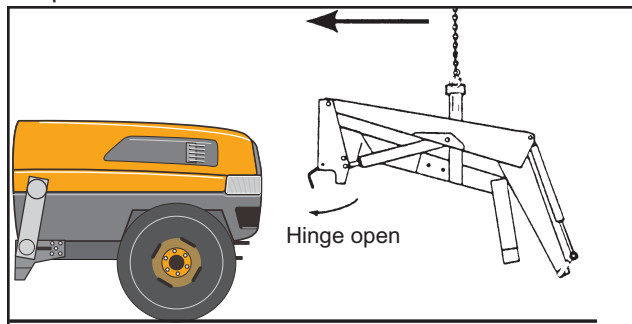


WARNING: To avoid injury during installation of quick attach loader, do not permit bystanders within ten feet of loader.

1. Remove hardware which secures loader to pallet. Using overhead hoist, lower loader from vertical shipping position to horizontal position (use scraps of cardboard to protect paint).
2. Install hose or valve kit to tractor and loader. Refer to installation instructions provided with hose or valve kit.



3. Reposition overhead hoist by looping nylon strap around yoke near loader side frames at balance point of loader.



4. Using overhead hoist, raise loader until side frame uprights will clear front tires. Temporarily remove lock nut and washer from loader hinges and swing each hinge open.
5. Position loader so hinges hook over midmounting tubes and yoke tube fits inside front mounting bracket.
6. Clamp hinges to midmounting tubes with 3/4 flat washers and 3/4 flex-lock nuts (supplied with loader).

IMPORTANT: Be sure to use flex-lock nuts to clamp hinge. Tighten flex-lock nuts against hinge securely, but not to more than 125 ft.-lb. Torque.

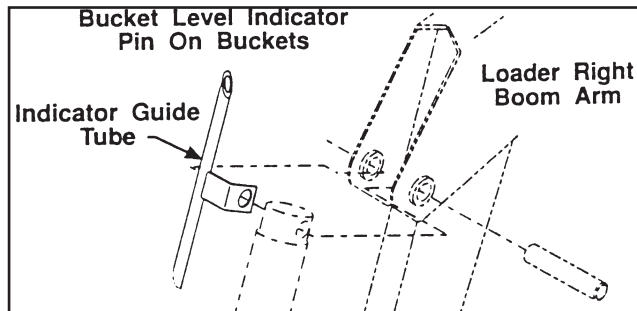
7. Adjust front wheel tread settings of steering stops, if necessary to prevent interference between tires and loader. Refer to tractor operator's manual for adjustment procedures.

INSTALLING BUCKET

Refer to instructions provided with bucket or loader attachment to install bucket or attachment onto loader.

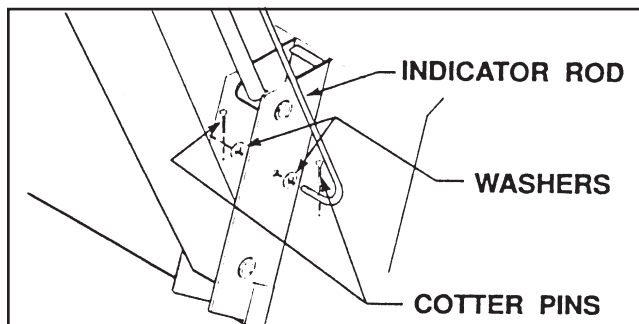
INSTALLING BUCKET LEVEL INDICATOR

1. Attach indicator guide tube to cylinder pin. Attach guide tube positioned to outside of boom.



**INSTALLING BUCKET LEVEL INDICATOR
(Cont.)**

- Slide bucket level indicator rod through guide tube. Attach other end of rod with 1/8 x 1 cotter pins and 3/8 flat washers.



- Locate tractor and loader on level surface. With bottom of bucket resting on surface, cut off excess rod flush with end of guide tube or paint exposed rod a contrasting color.

GENERAL TORQUE SPECIFICATIONS

USE THE FOLLOWING TORQUES WHEN SPECIAL TORQUES ARE NOT GIVEN

Standard American and Metric Cap Screws

| AMERICAN STANDARD CAP SCREWS | | | | | | | | | METRIC CAP SCREWS | | | | | | | | |
|------------------------------|--------|------|------|------|--------|-----|------|------|---|--------|------|------|------|--------|------|------|------|
| SAE Grade | 5 | | | | 8 | | | | Metric Class | 8.8 | | | | 10.9 | | | |
| Typ. Head Markings | | | | | | | | | Typ. Head Markings | | | | | | | | |
| Cap Screw | TORQUE | | | | TORQUE | | | | Cap Screw | TORQUE | | | | TORQUE | | | |
| Size | FT-LBS | | N-m | | FT-LBS | | N-m | | Size | FT-LBS | | N-m | | FT-LBS | | N-m | |
| Inches | MIN | MAX | MIN | MAX | MIN | MAX | MIN | MAX | Millimeters | MIN | MAX | MIN | MAX | MIN | MAX | MIN | MAX |
| 1/4 - 20 | 6.25 | 7.25 | 8.5 | 10 | 8.25 | 9.5 | 11 | 13 | M6 x 1.00 | 6 | 8 | 8 | 11 | 9 | 11 | 12 | 15 |
| 1/4 - 28 | 8 | 9 | 11 | 12 | 10.5 | 12 | 14 | 16 | M8 x 1.25 | 16 | 20 | 21.5 | 27 | 23 | 27 | 31 | 36.5 |
| 5/16 - 18 | 14 | 15 | 19 | 20 | 18.5 | 20 | 25 | 27 | M10 x 1.50 | 29 | 35 | 39 | 47 | 42 | 52 | 57 | 70 |
| 5/16 - 24 | 17.5 | 19 | 23 | 26 | 23 | 25 | 31 | 34 | M12 x 1.75 | 52 | 62 | 70 | 84 | 75 | 91 | 102 | 123 |
| 3/8 - 16 | 26 | 28 | 35 | 38 | 35 | 37 | 47.5 | 50 | M14 x 2.00 | 85 | 103 | 115 | 139 | 120 | 146 | 163 | 198 |
| 3/8 - 24 | 31 | 34 | 42 | 46 | 41 | 45 | 55.5 | 61 | M16 x 2.50 | 130 | 158 | 176 | 214 | 176 | 216 | 238 | 293 |
| 7/16 - 14 | 41 | 45 | 55.5 | 61 | 55 | 60 | 74.5 | 81 | M18 x 2.50 | 172 | 210 | 233 | 284 | 240 | 294 | 325 | 398 |
| 7/16 - 20 | 51 | 55 | 69 | 74.5 | 68 | 75 | 92 | 102 | M20 x 2.50 | 247 | 301 | 335 | 408 | 343 | 426 | 465 | 577 |
| 1/2 - 13 | 65 | 72 | 88 | 97.5 | 86 | 96 | 116 | 130 | M22 x 2.50 | 332 | 404 | 450 | 547 | 472 | 576 | 639 | 780 |
| 1/2 - 20 | 76 | 84 | 103 | 114 | 102 | 112 | 138 | 152 | M24 x 3.00 | 423 | 517 | 573 | 700 | 599 | 732 | 812 | 992 |
| 9/16 - 12 | 95 | 105 | 129 | 142 | 127 | 140 | 172 | 190 | M27 x 3.00 | 637 | 779 | 863 | 1055 | 898 | 1098 | 1217 | 1488 |
| 9/16 - 18 | 111 | 123 | 150 | 167 | 148 | 164 | 200 | 222 | M30 x 3.00 | 872 | 1066 | 1181 | 1444 | 1224 | 1496 | 1658 | 2027 |
| 5/8 - 11 | 126 | 139 | 171 | 188 | 168 | 185 | 228 | 251 | <p>NOTE: These values apply to fasteners as received from supplier, dry or when lubricated with normal engine oil. They do not apply if special graphite or molysulphide greases or other extreme lubricants are used.</p> | | | | | | | | |
| 5/8 - 18 | 152 | 168 | 206 | 228 | 203 | 224 | 275 | 304 | | | | | | | | | |
| 3/4 - 10 | 238 | 262 | 322 | 355 | 318 | 350 | 431 | 474 | | | | | | | | | |
| 3/4 - 16 | 274 | 305 | 371 | 409 | 365 | 402 | 495 | 544 | | | | | | | | | |
| 7/8 - 9 | 350 | 386 | 474 | 523 | 466 | 515 | 631 | 698 | | | | | | | | | |
| 7/8 - 14 | 407 | 448 | 551 | 607 | 543 | 597 | 736 | 809 | | | | | | | | | |
| 1 - 8 | 537 | 592 | 728 | 802 | 716 | 790 | 970 | 1070 | | | | | | | | | |
| 1 - 14 | 670 | 740 | 908 | 1003 | 894 | 987 | 1211 | 1337 | | | | | | | | | |

INSTALLATION INSTRUCTIONS