

## GRILLE GUARD KIOTI DK55 TRACTOR

### TRACTOR AND GRILLE GUARD GENERAL INFORMATION

Grille guard can be installed using tools ordinarily available, including standard and metric wrenches and a torque wrench.

Grille guard can be used with or without front weights.

Grille guard is designed to be compatible with an Alamo SMC or Rhino 2491 loader. If loader is to be installed, install grille guard while installing loader mid mounting brackets. Refer to instructions at right and instructions provided with loader mounting kit.

References to left and right used in these instructions refer to position when seated in operating position on tractor. Shut off engine and engage parking brakes during installation.

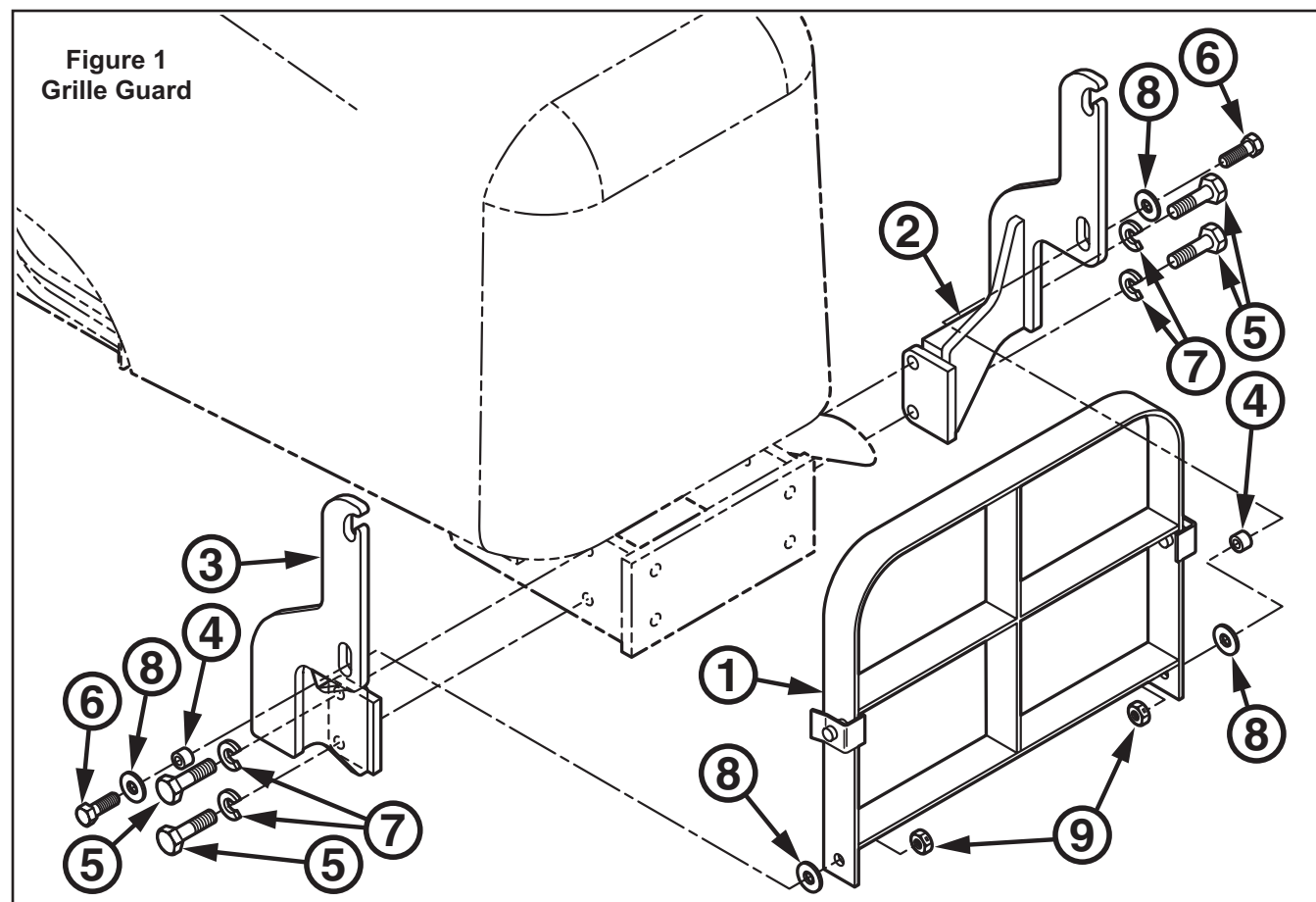
### INSTALLING GRILLE GUARD (Figure 1)

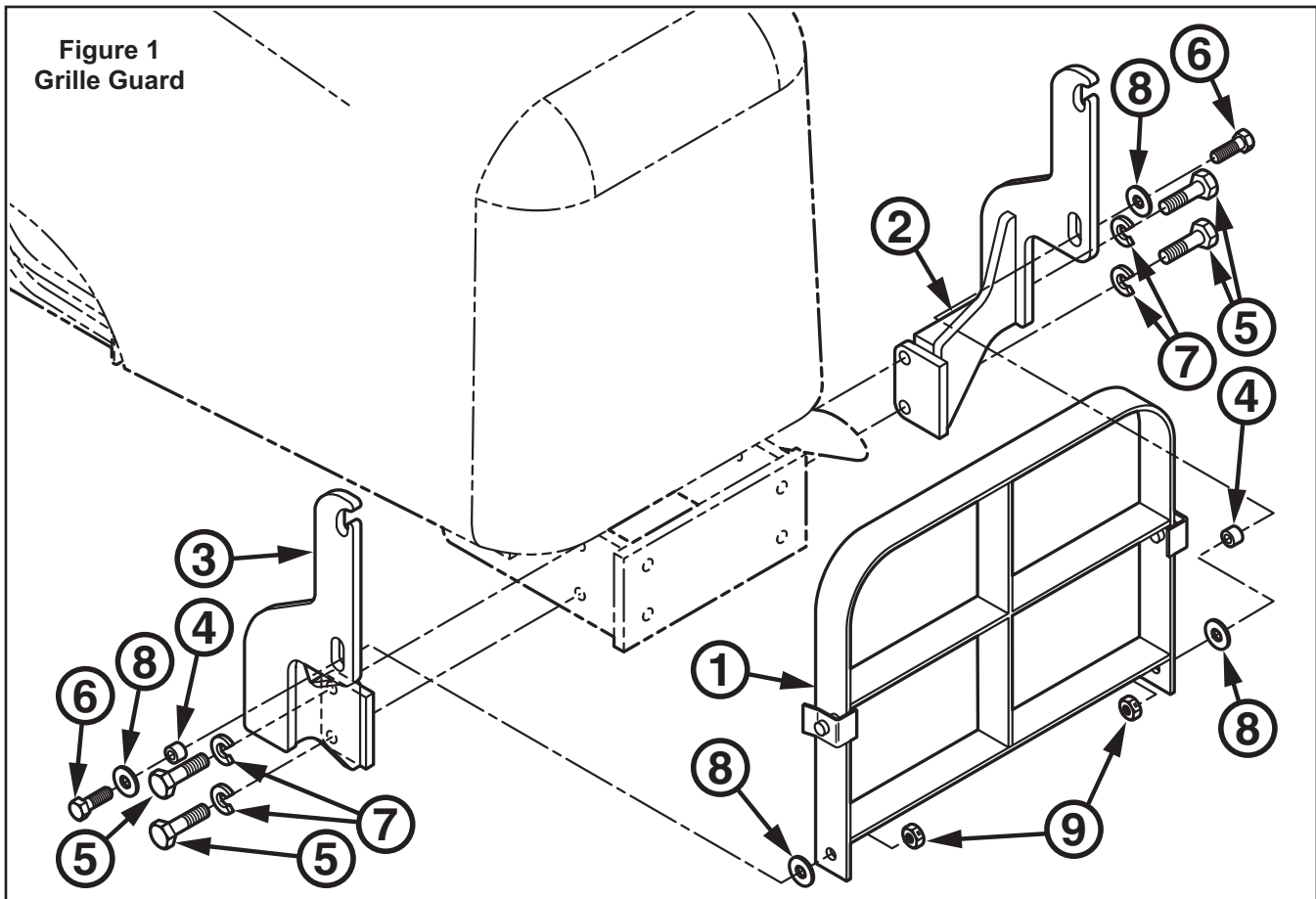
**NOTE:** Install all attaching hardware loosely (unless noted otherwise) until grille guard is completely assembled to facilitate assembly and proper alignment.

1. Fasten left and right support brackets (2 & 3) to tractor frame using 16mm x 35mm cap screws (5) and 5/8" lock washers (7).
2. Attach grille guard (1) to support brackets (2 & 3) using 1/2 x 1-1/2" cap screws (6), flat washers (8), spacer tubes (4), and lock nuts (9).
3. Torque all 16mm-1.50 Class 8.8 hardware to 133 ft.·lbs. (180 Nm). Torque all 1/2-13 Grade 5 hardware to 70 ft.·lbs. (94 Nm).

### OPENING TRACTOR HOOD

To allow tractor hood to be opened, first lift grille guard to top of slots, then tilt top of grille guard forward and down, away from tractor hood.





#### PARTS LIST – GRILLE GUARD

Item	Part No.	Description	Qty.
1	52769	GRILLE GUARD	1
2	52060-1	BRACKET, Grille Guard Support, Left	1
3	52760-2	BRACKET, Grille Guard Support, Right	1
4	47427-1	SPACER, Tube 3/4 O.D. x 1/2 I.D. x 9/16" Lg.	2
5	42672-26	SCREW, Cap, 16mm-1.50 x 35mm, Class 8.8	4
6	41838-33	SCREW, Cap, 1/2-13 x 1-1/2", Grade 5	2
7	41837-7	WASHER, Lock, 5/8"	4
8	42502-30	WASHER, Flat, 1/2"	4
9	41840-5	NUT, Lock, 1/2-13	2

# INSTALLATION INSTRUCTIONS