

Keep with Operator's Manual

## LOADER MOUNTING KIT 2408 LOADER KUBOTA TRACTORS

MODEL	2WD	FWA	ROPS	CAB
L2800	X	X	X	
L3400	X	X	X	

### TRACTOR & LOADER GENERAL INFORMATION

Mounting brackets can be installed using tools ordinarily available. Shut off tractor engine and engage tractor brakes during installation.

After loader is installed, check to be sure front tires clear loader and mounting brackets in all possible positions.

If tractor is equipped with a front weight bracket, remove it before installing loader mounting brackets.

### INSTALLING LOADER ONTO TRACTOR AND MOUNTING BRACKETS

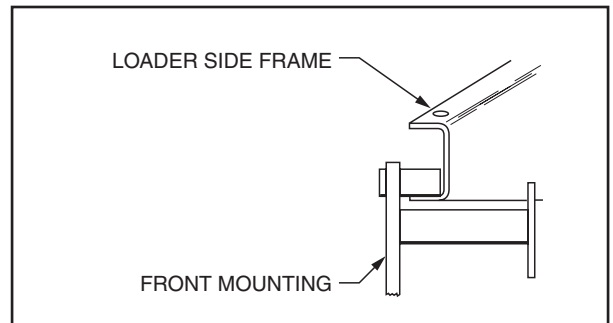
**NOTE:** Leave all attaching hardware loose until mounting brackets are completely assembled to facilitate assembly and proper alignment. Tighten all hardware to torque specifications in loader operator's manual.

1. Fasten front mounting bracket (1) to front of tractor frame using 14mm x 40mm cap screws (5) and 9/16" lock washers (7).
2. Fasten left mid mounting bracket (2) to left side of tractor casting and frame using 16mm x 45mm cap screws (4) and 5/8" lock washers (6).
3. Fasten right mid mounting bracket (3) to right side of tractor casting and frame using 16mm x 50mm cap screws (4) and 5/8" lock washers (6).

### INSTALLING LOADER TO MOUNTING BRACKETS

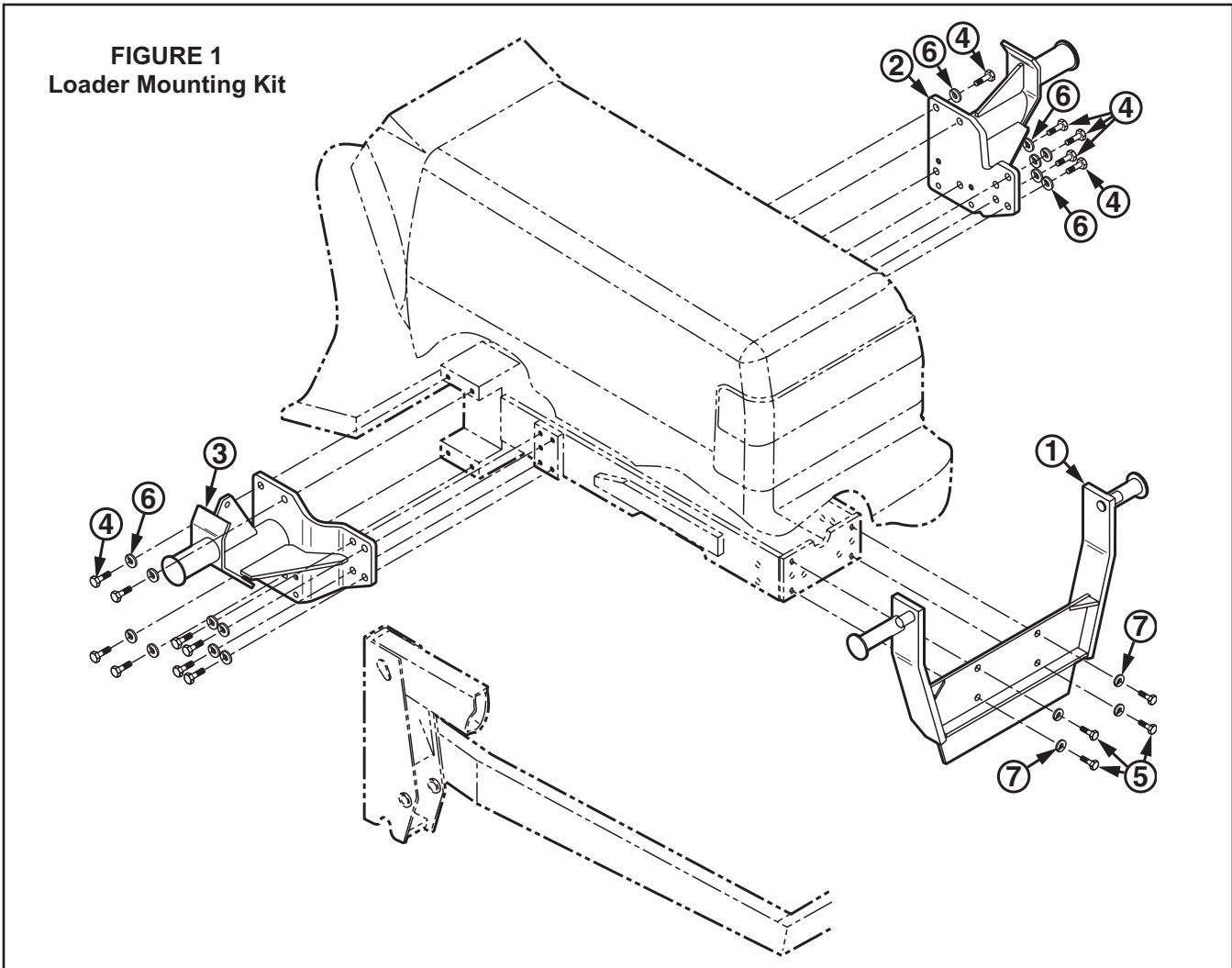
1. Position hinges inside side frames. Fasten hinges to side frames using 5/8" x 4-1/2" carriage bolts and lock nuts (supplied with loader).
2. Attach nylon slings around loader front bumper and use an overhead hoist to raise loader off pallet and lower to a horizontal position, starting loader side frames onto loader front mounting bracket (1). Slide loader rearward until side frames can be placed over mid mounting tubes.

**NOTE:** Lower lip of side frame channel must be between cylindrical members of front mounting bracket.



3. Clamp hinges around tubes of mid mounting brackets (2 & 3) using 5/8" x 2-1/4" cap screws, flat washers, and hex nuts (supplied with loader).
4. Tighten all attaching hardware to torques specified in general torque specifications table included in loader operator's manual. Refer to loader operator's manual and plumbing kit instructions to complete loader installation.

**FIGURE 1**  
Loader Mounting Kit



**PARTS LIST – MOUNTING KIT**

Item	Part No.	Description	Qty.
1	42294	MOUNTING BRACKET, Front	1
2	52131	MOUNTING BRACKET, Mid, Left	1
3	52132	MOUNTING BRACKET, Mid, Right	1
4	42672-66	SCREW, Cap, 16mm-1.50 x 45mm	16
5	42672-23	SCREW, Cap, 14mm-1.50 x 40mm	4
6	41837-7	WASHER, Lock, 5/8"	16
7	41837-6	WASHER, Lock, 9/16"	4

# INSTALLATION INSTRUCTIONS