

LOADER MOUNTING KIT 5211 LOADER NEW HOLLAND TLA & CASE IH JXU SERIES TRACTORS

MODEL	2WD	FWA	ROPS	CAB
NH TL80A	X	X	X	X
NH TL90A	X	X	X	X
NH TL100A	X	X	X	X
CIH JX1080U	X	X	X	X
CIH JX1090U	X	X	X	X
CIH JX1100U	X	X	X	X

TRACTOR & MOUNTING KIT GENERAL INFORMATION

Mounting kit can be installed using tools ordinarily available, including an overhead hoist and sling for initial loader installation, floor jack, standard and metric wrenches, and a torque wrench.

Reference to left and right used in these instructions refer to position when seated in the operating position on tractor.

Tractors equipped with mid mount valves require hydraulic plumbing kit (2-6511). Tractors with rear remotes require plumbing kit (2-6286).

NOTE: *If tractor is to have loader mounting kit and mid mount valve kit, install mounting kit first.*

If tractor is equipped with front weights, weights must be removed before installing loader mounting brackets.

Check front tire clearances once loader is installed and adjust tire track width as necessary.

Tractor steering stops may need to be adjusted to provide clearance between front tire and loader on full left and right turn with front axle fully oscillated. Be sure lift cylinders are fully retracted when checking tire clearances. Refer to tractor operator's manual for steering stop adjustment.

Shut off engine and engage brakes during installation.

INSTALLING MOUNTING BRACKETS (Figures A & 1)

NOTE: *Loosely install hardware until mounting kit is completely assembled to facilitate assembly and proper alignment. All mounting hardware will be torqued later.*



WARNING: *Front window of cab is very vulnerable to breakage when installing mid mounting brackets. Take precautions to protect glass when attaching mid mounting brackets.*

NOTE: *If installing grille guard, install grille with loader mounting brackets. (Grille guard attaching plates replace front-most pair of spacers.) Refer to instructions provided with grille guard.*

INSTALLING LEFT MID MOUNTING BRACKET (A)

1. Support fuel tank and tank support plate assembly with floor jack. Remove fuel tank support strap bolt from tank support channel (near step, see figure A).
2. Remove tank support bracket hardware from tank support channel.
3. Remove tank support bracket from step (see figure A).
4. Remove two nuts and flat washers from tank support channel on underside of fuel tank.
5. Lower tank with floor jack enough to access transmission casting, cab/platform support bracket and fuel tank support bracket.

NOTE: *Secure tank to step to prevent falling.*

6. Remove 16mm cap screws from front two holes of platform/cab support bracket .
7. Remove plastic thread protectors from three holes in transmission casting and from four front holes on the front axle support casting (see figure 1).
8. Fasten left mid mounting bracket (1) with 16mm x 90mm cap screw (8) and 5/8" lock washer (10) in lower front hole of cab/platform support bracket.
9. Remove shipping hardware, keeping spacers (3) (see figure 1).
10. Slide spacer (3) behind left mid mounting bracket (1) from underside. Loosely fasten left mid mounting bracket (1) and spacer (3) to transmission casting using two 20mm x 80mm cap screws (6) and lock washers (9) in two lower holes and a 20mm x 65mm cap screw (7) and lock washer (9) in top hole. Loosely install 16mm x 65mm cap screw (5) and 5/8" lock washer (10) into top rear hole of left mid mounting bracket (1) through cab support bracket.

INSTALLING MOUNTING BRACKETS (*Continued*)

9. Loosely attach left mid mounting bracket (1) and spacers (4) to front axle support casting using four 20mm x 80mm cap screws (6) and lock washers (9).
10. Raise fuel tank and support plate assembly with floor jack.
11. Reinstall fuel tank support channel using two nuts and flat washers on tank support channel bolts on underside of fuel tank.
12. Reinstall fuel tank support bracket and hardware to tank support channel and step.
13. Install fuel tank support strap bolt into tank support channel.

IMPORTANT: Take care not to pinch plastic air link, located on top of tank, under support strap.

14. Tighten all fuel tank hardware to the torques specified in general torque specifications table.

INSTALLING RIGHT MID MOUNTING BRACKET

1. Remove 16mm cap screws from front two holes of platform/cab support bracket.
2. Remove plastic thread protectors from three holes in transmission casting and from the four front holes on the front axle support casting (see figure 1).
3. Fasten right mid mounting bracket (2) with 16mm x 90mm cap screw (8) and 5/8" lock washer (10) in lower front hole of cab/platform support bracket.

4. Slide spacer (3) behind right mid mounting bracket (2) from underside. Loosely fasten right mid mounting bracket (2) and spacer (3) to transmission casting using two 20mm x 80mm cap screws (6) and lock washers (9) in two lower holes and a 20mm x 65mm cap screw (7) and lock washer (9) in top hole. Loosely install 16mm x 65mm cap screw (5) and 5/8" lock washer (10) into top rear hole of right mid mounting bracket (2) through cab support bracket.
5. Loosely attach right mid mounting bracket (2) and spacers (4) to front axle support casting with four 20mm x 80mm cap screws (6) and 20mm lock washers (9).

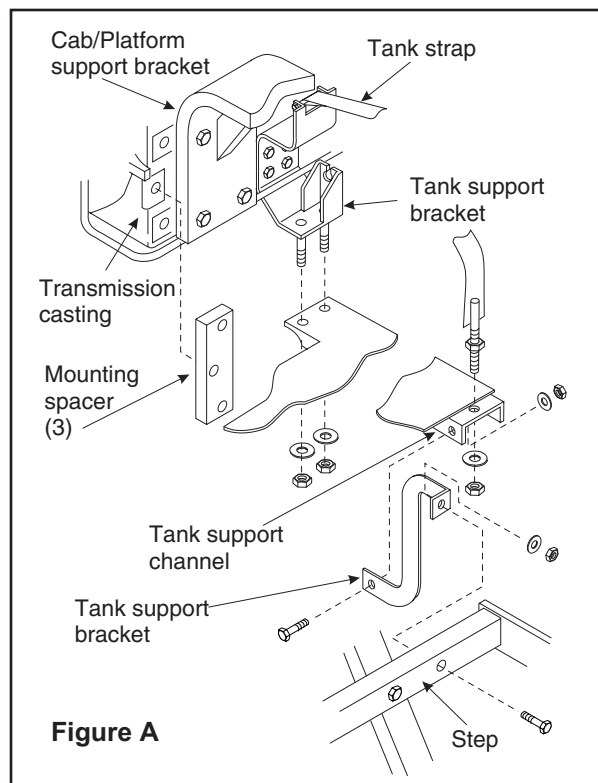
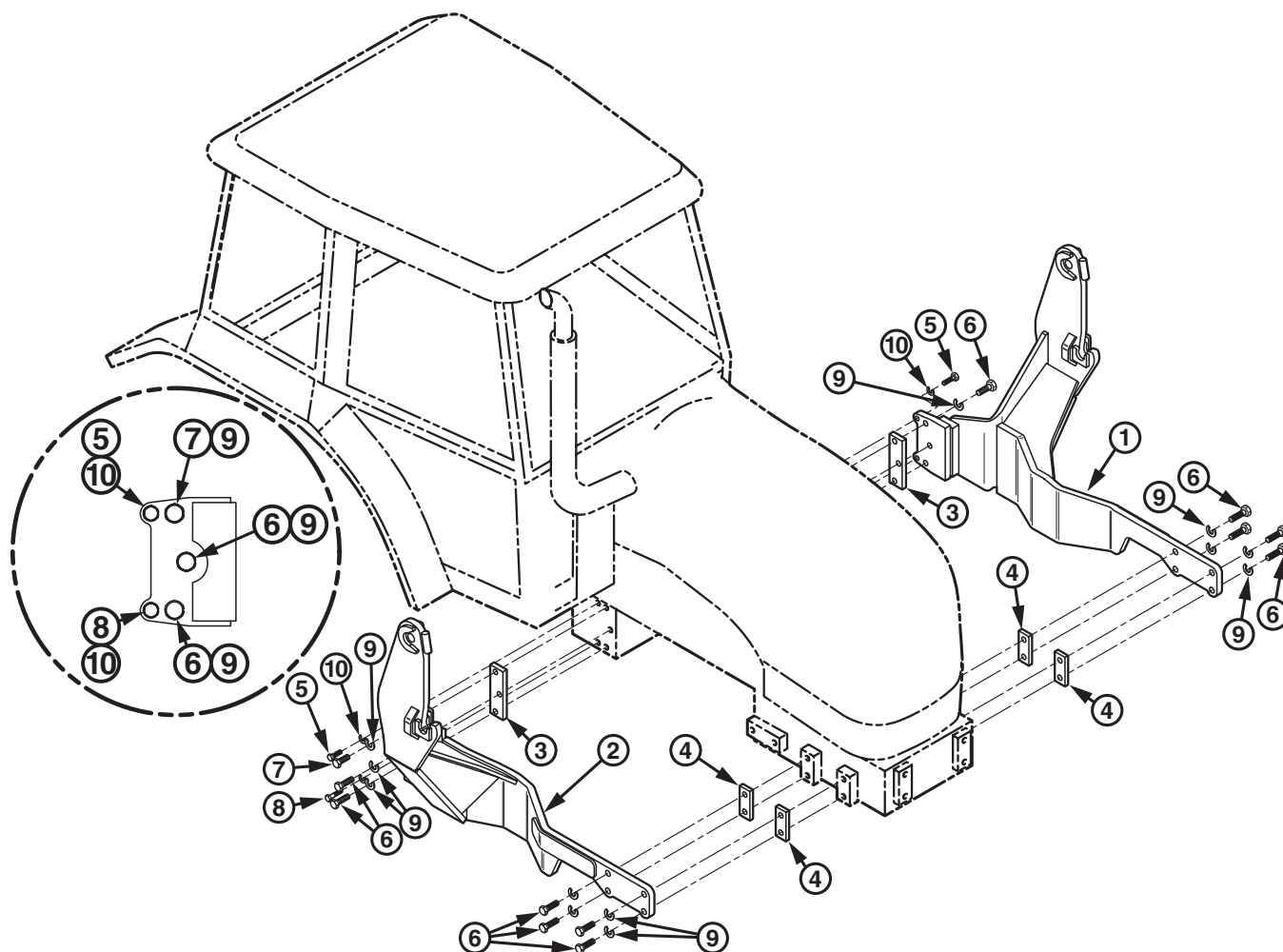


Figure A

Figure 1
Loader Mounting Kit



PARTS LIST - LOADER MOUNTING KIT (Figure 1)

Item	Part No.	Description	Qty.
1	53065-1	BRACKET, Mid Mounting, Left	1
2	53065-2	BRACKET, Mid Mounting, Right	1
3	47317	SPACER, Rear	2
4	52818	SPACER, Front	4
5	42672-71	SCREW, Cap, 16mm-1.50mm x 65mm	2
6	42672-72	SCREW, Cap, 20mm-2.50mm x 80mm	12
7	42672-73	SCREW, Cap, 20mm-2.50mm x 65mm	2
8	42672-74	SCREW, Cap, 16mm-1.50mm x 90mm	2
9	48093-2	WASHER, Lock 20mm	14
10	41837-7	WASHER, Lock 5/8"	4

MOUNTING LOADER (Figures 2, 3, 4, 5, 6 & 7)

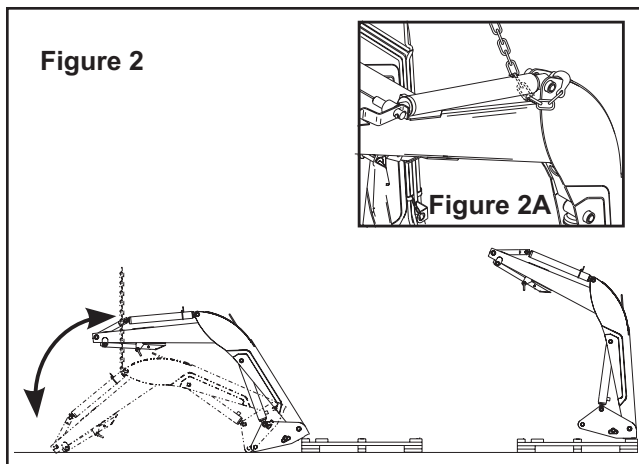
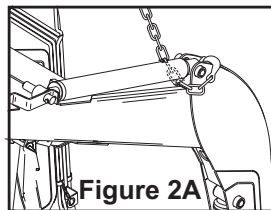
WARNING: Loader must be supported before removing hardware securing loader to shipping pallet, or loader will tip over.



WARNING: To avoid injury during installation of quick attach loader, do not permit bystanders within ten feet of loader.



WARNING: To avoid injury during installation of quick attach loader, an overhead hoist must be used for initial mounting. Parking stands are not operational without bucket or heavy attachment mounted. (Bale spear or pallet fork alone do not provide enough weight.)

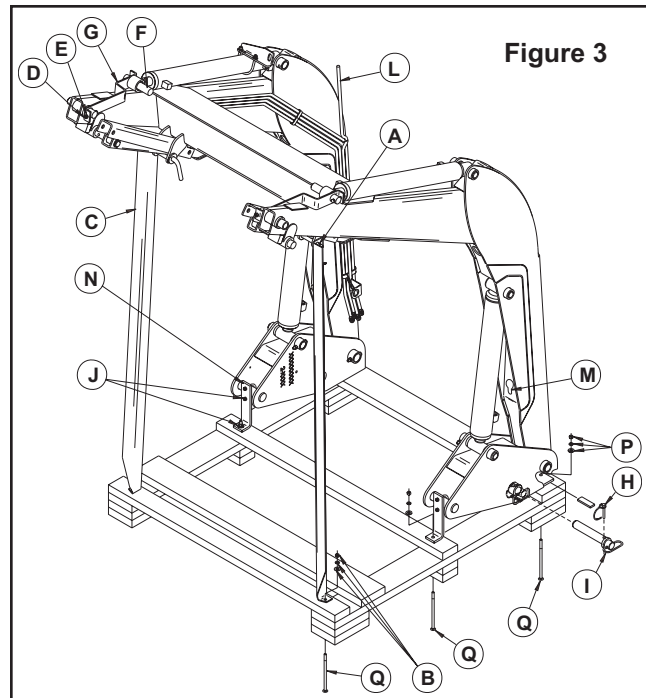
Figure 2

1. Loop chain or sling under each bucket cylinder and hook on loader boom arm (see Figure 2A). Using overhead hoist to support loader, remove shipping angle braces (C) (Figure 3) by temporarily removing lynch pins (A), to remove angle braces (C), then reinstall lynch pins (A), which hold parking stands in position.
2. Remove nut and washers (B) from shipping braces (C) and discard braces and hardware.
3. Cut tie straps, remove lynch pins (H) and hitch pins (I) (See Figure 3) and keep with loader for securing uprights to mid mounting brackets later.
4. Remove hardware (J) from shipping bracket (N). Discard brackets and hardware. Remove nuts and washers (P) from bolts securing loader to pallet. Raise loader.



WARNING: Loader uprights may rotate downward when loader is lifted from pallet.

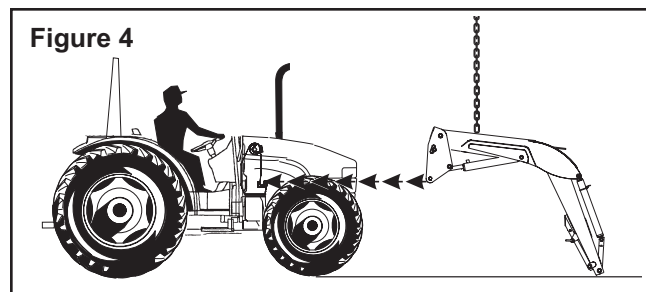
5. Remove all six carriage bolts (Q) from pallet (see Figure 3) and position pallet at rear of loader to facilitate lowering (see Figure 1). Lower loader from

**Figure 3**

vertical shipping position to horizontal position (use scraps of cardboard to protect paint). Remove bucket level indicator rod (L) attached to oil lines for shipment.

6. Install auxiliary valve kit or hose kit. Follow instructions provided with kit for installation. For auxiliary valve, refer to instructions provided with kit for valve coupler function; for hose kit, refer to tractor operator's manual for remote coupler function.
7. Secure a hoist strap around boom arm arms or secure with a chain hook into hole (M), on underside of boom arm (see Figure 3). If using a strap, locate strap around boom arm in approximately same location as chain hook hole, similar to Figure 4. Slowly raise loader with overhead hoist until loader upright will clear tractor tires (see Figure 4).

NOTE: Before mounting loader onto tractor with cab, rotate work lights, mounted on platform handrails, outward to prevent interference with loader uprights.

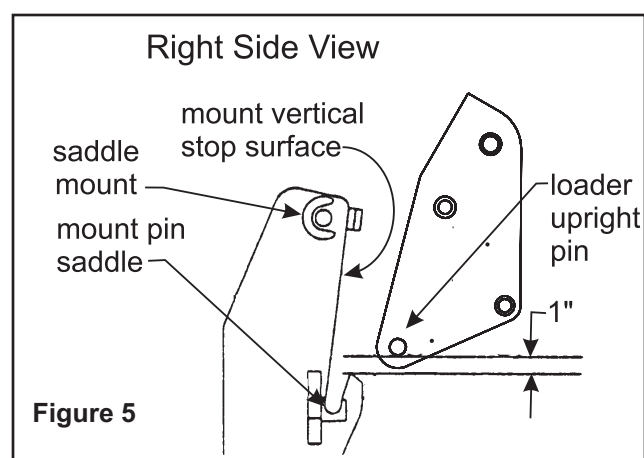
Figure 4

MOUNTING LOADER (Continued)

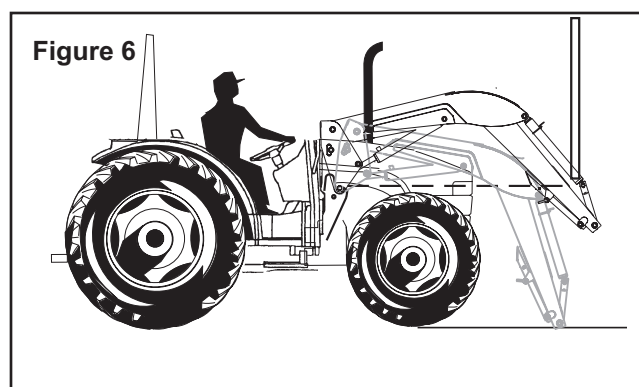
8. Drive tractor into loader until uprights of loader mounting brackets are within 12" to 18" of loader uprights. Shut off engine. Attach lift cylinder function hoses (color coded green and yellow) to corresponding tractor couplers.

NOTE: It is important to attach lift cylinder hoses (yellow and green spiral band coded) for loader to function properly. Do not connect boom oil line hoses for tilt cylinder control at this time. (Connect these after shipping brackets are removed from attachment pin hubs in instruction 12.)

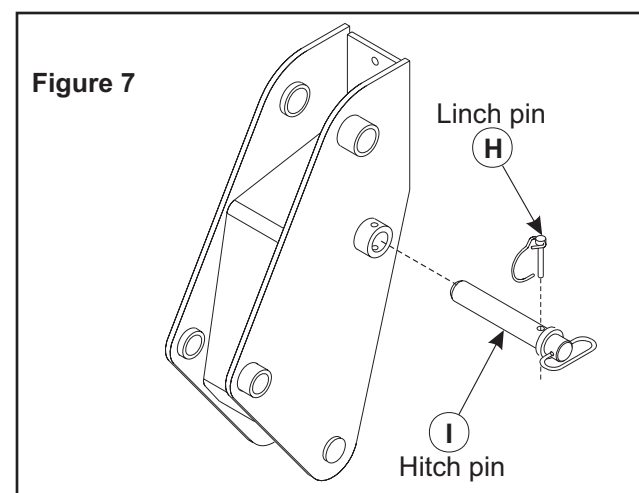
9. Start engine. Retract lift cylinders fully and continue to activate control lever for approximately 10 seconds. Cycle cylinders several times to remove air. Extend lift cylinders 10" to 12" from the fully closed position to ensure loader upright pin will be first part of loader upright to make contact with mount vertical stop surface. Shut off engine.



10. With overhead hoist, position loader upright pin to clear mount pin saddle by 1" (see Figure 5). Move tractor forward until both loader upright pins come to rest against the flat vertical stop surface of both mounts. Lower loader with overhead hoist until both loader upright pins rest into mount pin saddles.



11. Remove hoist chain or strap from loader boom and secure to each bucket cylinder shipping brackets (G) (Refer to Figure 3). Using overhead hoist raise front of loader to rotate loader upright into upper mount saddle (see Figure 6). Continue to rotate loader upright until upright has fully seated into back of mount saddle. Insert two 1-1/4 x 7" pins (I) and linch pins (H) which were removed from loader uprights in instruction 3. Remove hoist chain or strap from shipping brackets.



NOTE: In some cases a small amount of additional force may be required to insert the pins. If necessary, use a drift and hammer made of non-sparking material (a shot-filled mallet is recommended) to seat loader uprights into mount saddle.

12. Remove 3/8" cap screws (D), lock nuts (E), pins (F), and shipping brackets (G) (see Figure 3). Discard shipping brackets, retain hardware for further use when installing bucket or attachment.
13. Attach tilt cylinder function hoses (color coded blue and red) to corresponding tractor couplers. For auxiliary valve, refer to instructions provided with kit for valve coupler function; for hose kit, refer to tractor operator's manual for remote coupler function.
14. Adjust front wheel tread settings or steering stops, if necessary, to provide a minimum 3/4" clearance between front tires and any part of loader with lift cylinders fully retracted and front axle fully oscillated. Be sure lift cylinders are fully retracted. Refer to page 1 under tractor and loader general information. Refer to tractor operator's manual for tread setting and steering stop adjustment procedures.

NOTE: Axle oscillation is 12° unless equipped with Case IH oscillation stops.

INSTALLING BUCKET OR ATTACHMENT

Refer to loader operator's manual to install bucket or optional attachments.



WARNING: Always have a bucket attachment mounted to loader when it is removed from tractor. Pallet fork, bale spear, or similar attachments are too light to safely counterbalance loader boom arms when loader is dismounted from tractor.

ATTACH LEVEL INDICATOR FOR BUCKET OR ATTACHMENT (Figure 8)

Refer to assembly instructions provided with bucket or optional attachment to attach level indicator rod.

NOTE: Attachment level setting varies for each loader attachment. It is important to make sure level indicator is adjusted to indicate level whenever a different attachment is mounted, or else level indicator will not indicate true level.

To adjust level indicator properly, locate tractor and loader attachment on a firm, level surface with attachment resting on level surface in level operating position. Loosen u-bolt that fastens level indicator bracket to right tilt cylinder and position it so it is centered on the offset in level indicator rod, the retighten u-bolt hardware.

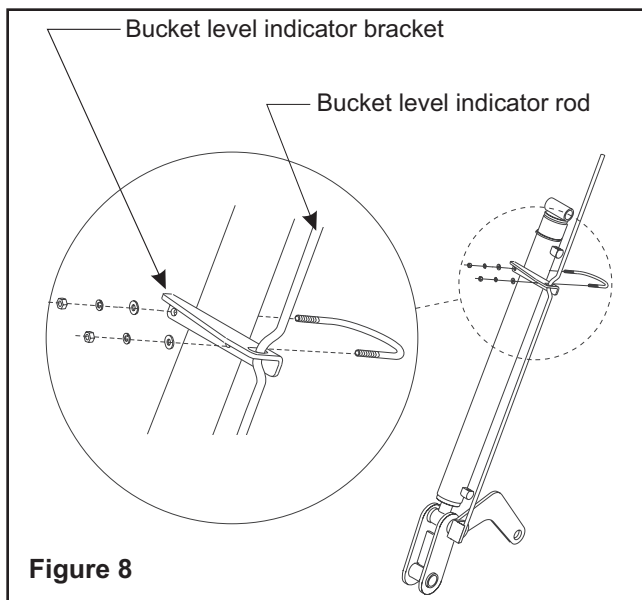


Figure 8

GENERAL TORQUE SPECIFICATIONS

USE THE FOLLOWING TORQUES WHEN SPECIAL TORQUES ARE NOT GIVEN

Standard American and Metric Cap Screws

AMERICAN STANDARD CAP SCREWS									METRIC CAP SCREWS								
SAE Grade	5				8				Metric Class	8.8				10.9			
Typ. Head Markings									Typ. Head Markings								
Cap Screw	TORQUE				TORQUE				Cap Screw	TORQUE				TORQUE			
Size	FT·LBS		N·m		FT·LBS		N·m		Size	FT·LBS		N·m		FT·LBS		N·m	
Inches	MIN	MAX	MIN	MAX	MIN	MAX	MIN	MAX	Millimeters	MIN	MAX	MIN	MAX	MIN	MAX	MIN	MAX
1/4 - 20	6.25	7.25	8.5	10	8.25	9.5	11	13	M6 x 1.00	6	8	8	11	9	11	12	15
1/4 - 28	8	9	11	12	10.5	12	14	16	M8 x 1.25	16	20	21.5	27	23	27	31	36.5
5/16 - 18	14	15	19	20	18.5	20	25	27	M10 x 1.50	29	35	39	47	42	52	57	70
5/16 - 24	17.5	19	23	26	23	25	31	34	M12 x 1.75	52	62	70	84	75	91	102	123
3/8 - 16	26	28	35	38	35	37	47.5	50	M14 x 2.00	85	103	115	139	120	146	163	198
3/8 - 24	31	34	42	46	41	45	55.5	61	M16 x 2.50	130	158	176	214	176	216	238	293
7/16 - 14	41	45	55.5	61	55	60	74.5	81	M18 x 2.50	172	210	233	284	240	294	325	398
7/16 - 20	51	55	69	74.5	68	75	92	102	M20 x 2.50	247	301	335	408	343	426	465	577
1/2 - 13	65	72	88	97.5	86	96	116	130	M22 x 2.50	332	404	450	547	472	576	639	780
1/2 - 20	76	84	103	114	102	112	138	152	M24 x 3.00	423	517	573	700	599	732	812	992
9/16 - 12	95	105	129	142	127	140	172	190	M27 x 3.00	637	779	863	1055	898	1098	1217	1488
9/16 - 18	111	123	150	167	148	164	200	222	M30 x 3.00	872	1066	1181	1444	1224	1496	1658	2027
5/8 - 11	126	139	171	188	168	185	228	251	NOTE: These values apply to fasteners as received from supplier, dry or when lubricated with normal engine oil. They do not apply if special graphite or moly sulphide greases or other extreme lubricants are used.								
5/8 - 18	152	168	206	228	203	224	275	304									
3/4 - 10	238	262	322	355	318	350	431	474									
3/4 - 16	274	305	371	409	365	402	495	544									
7/8 - 9	350	386	474	523	466	515	631	698									
7/8 - 14	407	448	551	607	543	597	736	809									
1 - 8	537	592	728	802	716	790	970	1070									
1 - 14	670	740	908	1003	894	987	1211	1337									

INSTALLATION INSTRUCTIONS