

Keep with Operator's Manual

## LOADER MOUNTING KIT 2409 LOADER NEW HOLLAND TRACTORS

| NEW HOLLAND MODEL          | SUPERSTEER | ROPS |
|----------------------------|------------|------|
| TC35, TC35A, TC35D, TC35DA | X          | X    |
| TC40, TC40A, TC40D, TC40DA | X          | X    |
| TC45, TC45A, TC45D, TC45DA | X          | X    |
| T1530                      |            | X    |

Mounting brackets can be installed using tools ordinarily available.

**NOTE:** Leave all hardware loose until loader is completely assembled to facilitate alignment. Torque hardware to specifications listed in loader manual.

### INSTALLING MOUNTING BRACKETS

1. Install front mounting bracket (3) to tractor frame using 1/2 x 1-3/4" cap screws (13) and 1/2" lock nuts (14).

**NOTE:** Use 1/2 x 3-1/4" cap screws (15) if Grille Guard is installed.

**NOTE:** If tractor is equipped with New Holland auxiliary control valve, do not use spacers (6) for right mid mounting (2). Valve stand sandwiches on inside of right mid mounting bracket, taking place of spacers (6).

2. Install mid mounting brackets (1 & 2) to tractor transmission casting using 16mm x 90mm cap screws (8), 5/8" lock washers (9), 5/8" flat washers (10) and spacers (5, 6 & 22). (See Figure 1)

**NOTE:** Step three applies only if tractor is equipped with New Holland loader valve.

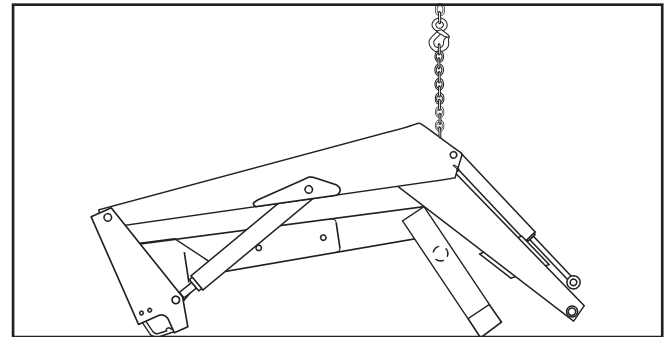
3. Install bracket (7) to right mid mounting (2) using 1/2 x 1-1/4" cap screws (18) and lock nuts (14). Using tube brackets supplied with valve kit, attach oil lines to bracket using 1/4 x 1" cap screws (19) and lock nuts (20).

### INSTALLING LOADER TO MOUNTING BRACKETS



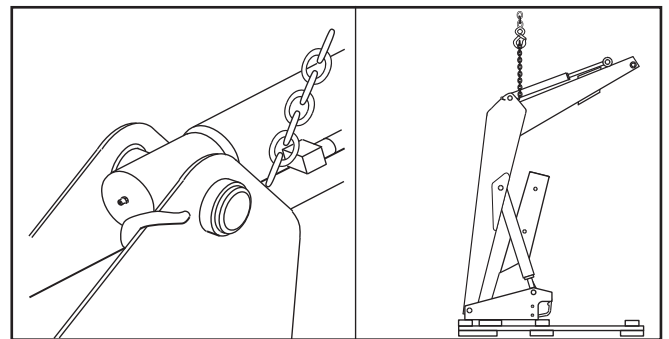
**WARNING:** To avoid injury during installation of quick attach loader, do not permit bystanders within ten feet of loader.

1. Loop chain under each lift cylinder and hook onto loader boom arm. Using overhead hoist to support loader remove hardware securing loader to pallet. Lift loader and remove pallet.



**CAUTION:** Do not damage grease fitting on end of cylinder. Be sure chain does not pinch lift cylinder.

2. Using overhead hoist, lower loader from vertical shipping position to horizontal position, leaving enough room to install yoke (4) (scraps of cardboard may be used to protect paint). Install yoke assembly (4) using 3/4 x 2-1/2" cap screws (16) and 3/4" lock nuts (17). Lower loader completely to ground.

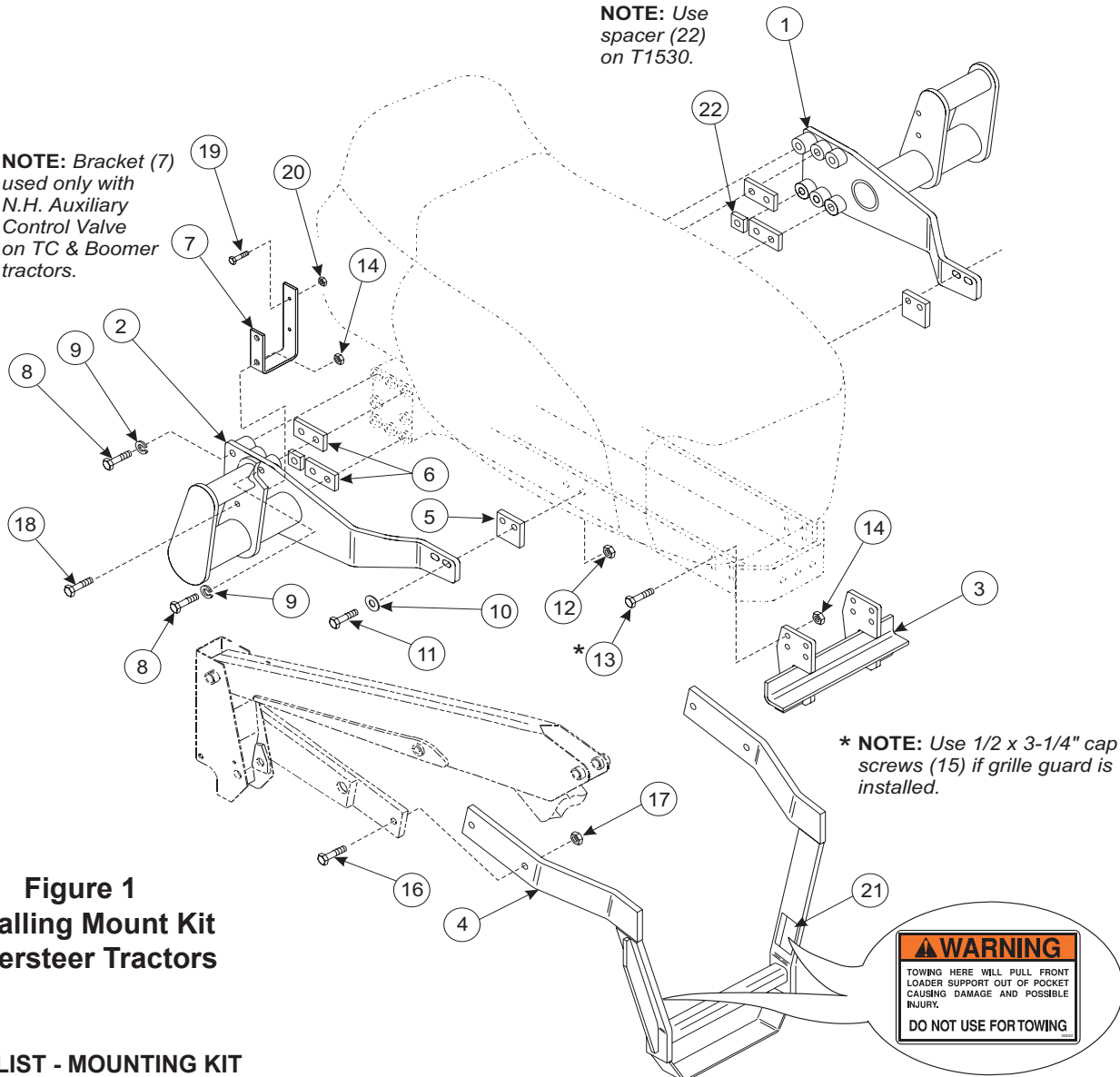


**NOTE:** Hardware connecting yoke to loader sideframes should be snug but do not torque completely. After loader has been mounted to tractor and aligned with mid mounting brackets and front mounting brackets, torque hardware to 239-262 ft. lbs.

3. Install hose or valve kit to tractor and loader. Refer to assembly instructions provided with hose or valve kit.

NOTE: Use spacer (22) on T1530.

NOTE: Bracket (7) used only with N.H. Auxiliary Control Valve on TC & Boomer tractors.



\* NOTE: Use 1/2 x 3-1/4" cap screws (15) if grille guard is installed.

**WARNING**  
TOWING HERE WILL PULL FRONT LOADER SUPPORT OUT OF POCKET CAUSING DAMAGE AND POSSIBLE INJURY.  
DO NOT USE FOR TOWING

**Figure 1**  
**Installing Mount Kit**  
**Supersteer Tractors**

**PARTS LIST - MOUNTING KIT**

| ITEM | PART No. | DESCRIPTION                                                  | QTY. |
|------|----------|--------------------------------------------------------------|------|
| 1    | 52661-1  | BRACKET Mounting, Mid, Left                                  | 1    |
| 2    | 52661-2  | BRACKET, Mounting, Mid, Right                                | 1    |
| 3    | 52670    | BRACKET, Mounting, Front                                     | 1    |
| 4    | 52667    | BRACKET, Loader Yoke, Front With Decals                      | 1    |
| 5    | 54682    | SPACER PLATE, 5/8 x 2-1/2 x 3"                               | 2    |
| 6    | 48796    | SPACER PLATE, 1/2 x 2 x 4                                    | 4    |
| 7    | 49071    | BRACKET, Valve ( Use Only with N.H. Auxiliary Control Valve) | 1    |
| 8    | 42672-84 | SCREW, Cap, 16mm-2.0 x 90mm                                  | 12   |
| 9    | 41837-7  | WASHER, Lock, 5/8"                                           | 12   |
| 10   | 42502-12 | WASHER, Flat, 5/8"                                           | 4    |
| 11   | 41838-86 | SCREW, Cap, 5/8-11 x 3"                                      | 4    |
| 12   | 00695100 | NUT, Lock, 5/8-11                                            | 4    |
| 13   | 41838-12 | SCREW, Cap, 1/2-13 x 1-3/4"                                  | 8    |
| 14   | 41840-5  | NUT, Lock, 1/2-13                                            | 8    |
| 15   | 41838-1  | SCREW, Cap, 1/2-13 x 3-1/4"                                  | 8    |
| 16   | 41838-7  | SCREW, Cap, 3/4-10 x 2-1/2"                                  | 4    |
| 17   | 41840-8  | NUT, Lock, 3/4-10                                            | 4    |
| 18   | 41838-2  | SCREW, Cap, 1/2-13 x 1-1/4"                                  | 2    |
| 19   | 41838-62 | SCREW, Cap, 1/4-20 x 1"                                      | 2    |
| 20   | 41840-11 | NUT, Lock, 1/4-20                                            | 2    |
| 21   | 39240    | DECAL, Warning                                               | 2    |
| 22   | 51210    | SPACER, 1/2 x 1-1/2 x 1-1/2"                                 | 2    |