

Keep With Operator's Manual

GRILLE GUARD

LANDINI MISTRAL 40, 45, & 50 TRACTORS

TRACTOR & GRILLE GUARD GENERAL INFORMATION

Grille guard can be installed using tools ordinarily available, including a 12mm-1.75 metric thread tap, standard wrenches, and a torque wrench.

Grille guard can be used on tractors with or without front weights on tractors not equipped with a loader. However, if loader is installed, weight bracket and weights must be removed.

Grille guard may be installed before or after installing mounting brackets or mounting loader.

PREPARING TRACTOR FOR GRILLE GUARD INSTALLATION

Shut off tractor engine and engage tractor brakes during installation.

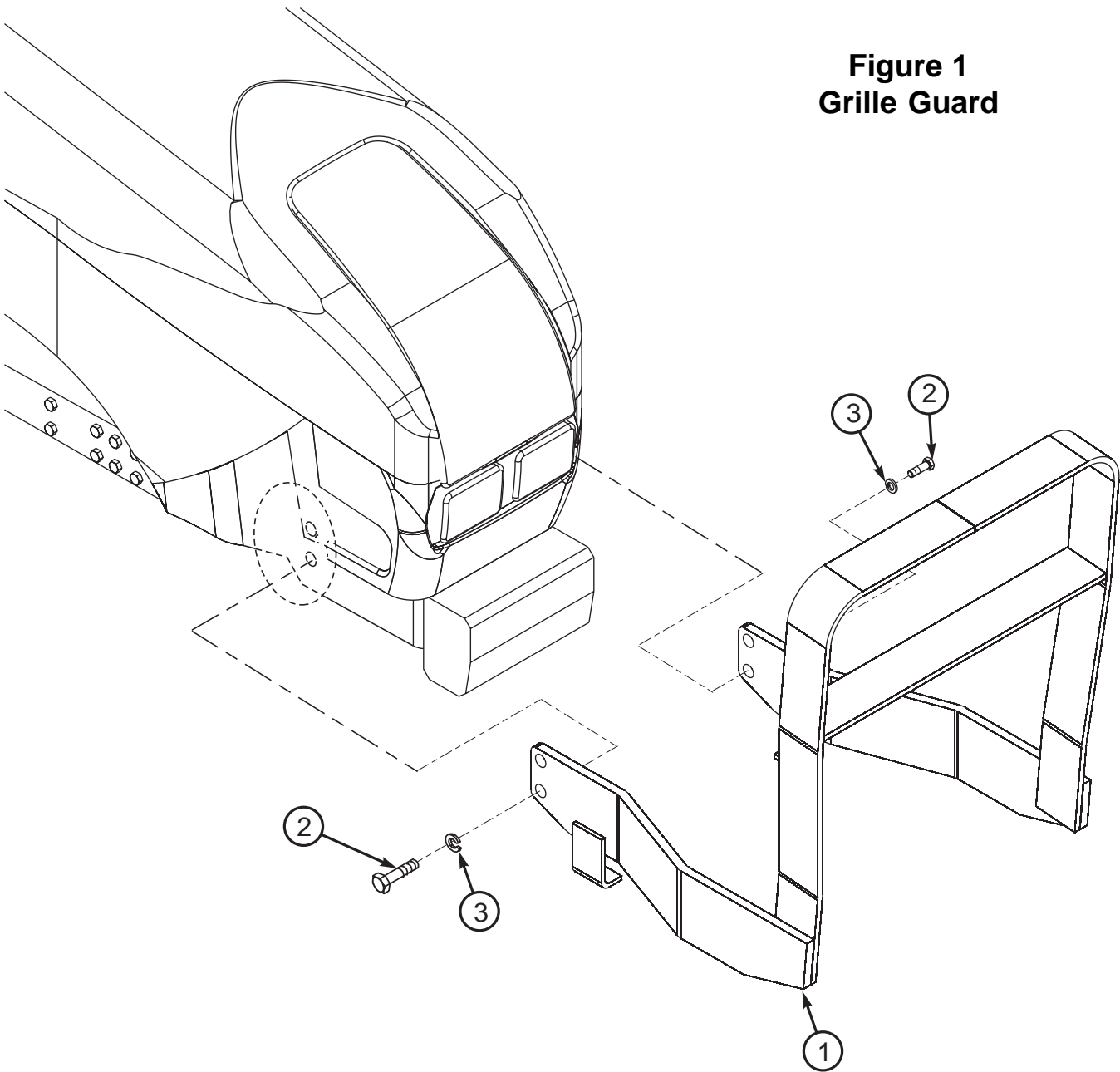
Remove plastic thread protectors from upper threaded holes in sides of tractor frame, which will be used for grille guard installation (see figure 1), and use 12mm-1.75 metric thread tap to clean out threads.

INSTALLING GRILLE GUARD

NOTE: *Install all attaching hardware loose until grille guard is completely assembled to facilitate assembly and proper alignment. Tighten hardware to specified torques when assembly is complete.*

1. Release hood latch.
2. Loosen and move hood latch release lever to allow insertion of grille guard bolt (2).
3. Install grille guard (1) using 12mm x 30mm cap screws (2) and 1/2" lock washers (3).
4. Reinstall hood latch release lever.
5. Torque 12mm - 1.75 hardware to 55 ft. lbs. (70 N•m).

**Figure 1
Grille Guard**



PARTS LIST - GRILLE GUARD

Item	Part No.	Description	Qty.
1	53500	GRILLE GUARD	1
2	42672-19	SCREW, Cap, 12mm-1.75 x 30mm, Class 8.8	4
3	41837-5	WASHER, Lock, 1/2"	4

INSTALLATION INSTRUCTIONS