

Keep With Operator's Manual

## BACKHOE SUBFRAME KIT NEW HOLLAND OR CASE IH TRACTORS

MODEL	BACKHOE	TRACTOR	LOADER
NEW HOLLAND	756C,920GH,930GH	TC35,TC40,TC45,TC35A,TC35D,TC35DA,TC40A,TC40D,TC40DA,TC45A,TC45D,TC45DA,TC2310,TC2320,TC2330, T1530	16LA,17LA,250TL,260TL,250TL,260TL
CASE IH	BHX172,BH90,BH102	D35,DX35,D40,DX40,D45,DX45,FARMALL 40,45,50	LX116,LX350,L350

Subframe can be installed on tractor and backhoe using tools ordinarily available. Tractor must be equipped with loader to install subframe. References to left or right is from perspective of someone sitting on tractor seat facing forward.

**NOTE:** Installation on T1530 tractors will require swinging drawbar hitch assembly, SBA370020610, which can be ordered through CNH service parts.

Complete backhoe installation requires hydraulic kit 715431026 (2-7620). Install hydraulic kit to tractor before installing backhoe to tractor.

**NOTE:** This subframe is not compatible with 914A or MWX mowers.

### INSTALLING SUBFRAME TO BACKHOE (Figures 1 & 2)

1. Install subframe (1) to backhoe using 3/4" x 4" cap screws (21) and 3/4" lock nuts (10) in front and rear holes and 7/8" x 4-1/2" cap screws (11), 7/8" lock washers (12) and 7/8" hex nuts (20) in middle holes.
2. Fasten support braces (6) to outside of subframe and inside of backhoe frame using 3/4" x 2-3/4" cap screws (9), 3/4" lock nuts (10) and then install double nut (10) (Torque to 350 ft lbs).

**NOTE:** 756C backhoe use front set of mounting holes for braces.

### INSTALLING MOUNTING BRACKET (Figure 3)

1. Remove 16mm cap screws which secure hitch to underside of tractor.

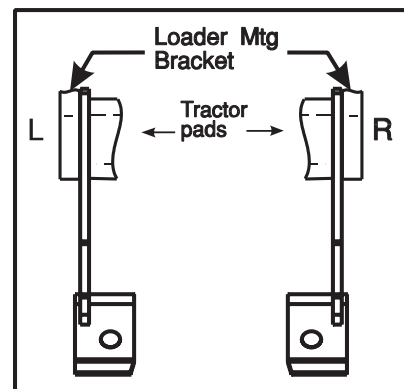
**NOTE:** It may be necessary to support hitch assembly when 16mm cap screws are removed.

2. Remove PTO shield. Install rear support (19) to rear mounting bracket (2) using 1/2" x 1-1/2" cap screws (17) and 1/2" lock nuts (18). Leave hardware loose. Attach rear hanger bracket (19) and PTO shield to transmission housing using 16mm x 35mm cap screws (15) and 5/8" lock washers (13), also use 5/8" flat washers (16) at PTO shield.

3. Install mounting bracket (2) using 16mm x 130mm cap screws (14) and original lock washers.

**NOTE:** If tractor is equipped with cast iron swinging drawbar bracket use spacer washers (5) between mounting (2) and drawbar bracket, if necessary to line up bolt holes.

4. Remove rear cap screws which secure loader mid-mounting brackets to tractor, and remove spacer plates from tractor.



**Figure 1  
Installing Mount  
Brackets**

5. If tractor is equipped with 16LA or 17LA loader, install front mounting brackets (3 & 4) using 16mm x 100mm cap screws (22) with 5/8" lock washers (13) in upper and lower holes. Brackets mount between tractor and loader in front four holes of six hole pattern.
6. Torque all bolts to specifications in backhoe manual unless otherwise specified.

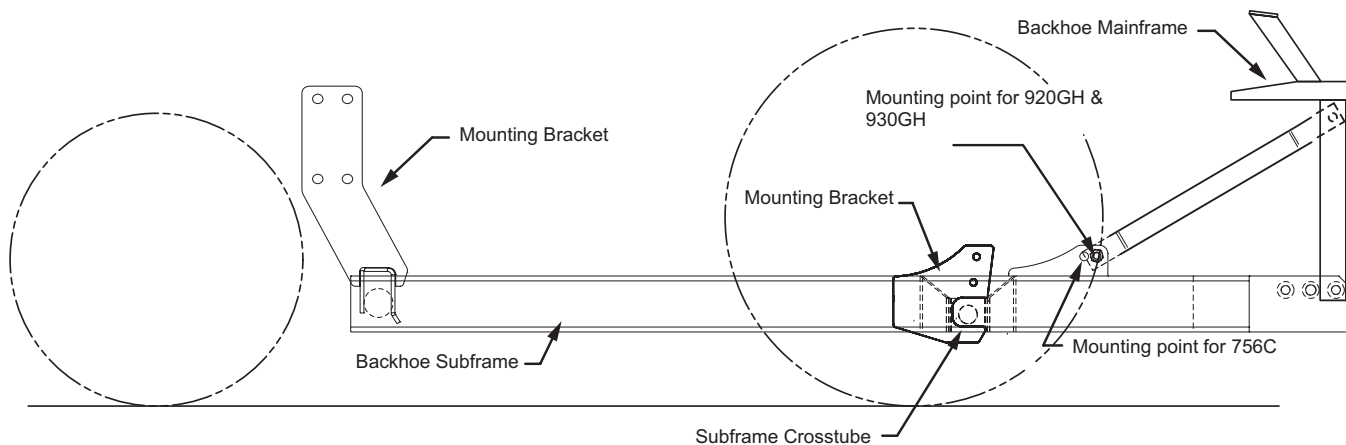
**MOUNTING BACKHOE TO TRACTOR (Figure 2)**

1. Back tractor slowly toward backhoe, parallel to subframe assembly, until hoses can be connected to tractor.
2. Connect hoses to tractor hydraulics.
3. Using backhoe controls, extend bucket and lower stabilizers to provide a base for raising subframe. Using backhoe controls, raise subframe to proper height to connect to tractor.
4. Position 3-point hitch arms inside subframe support braces.
5. Back tractor and position subframe so crosstube engages pocket in rear mounting bracket (2) and holes in front of subframe align with front mounting brackets (3 & 4). Install 3/4" pins (7) and lynch pins (8).

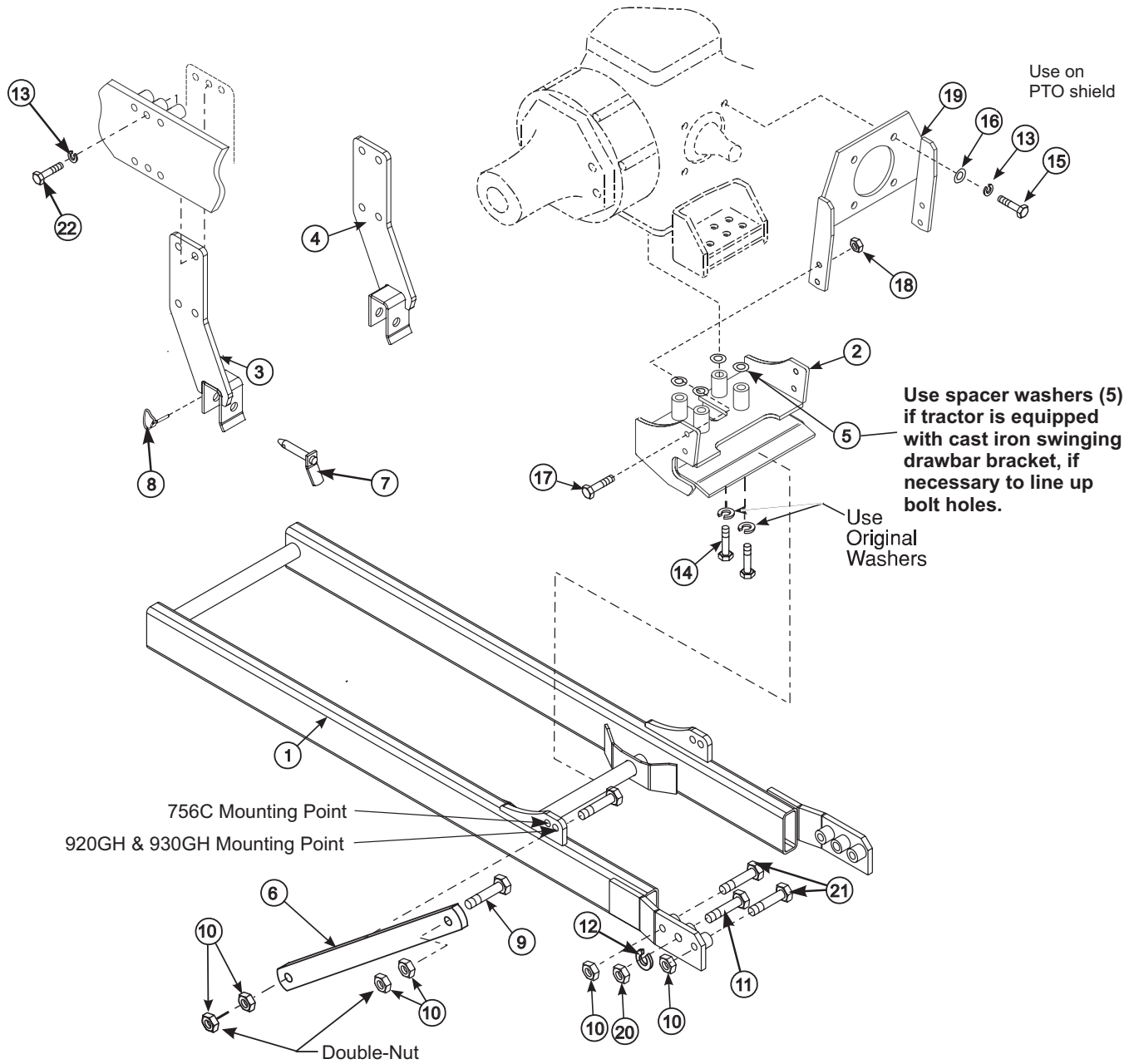
**PARTS LIST - SUBFRAME KIT**

ITEM	PART NO.	DESCRIPTION	QTY.
1	53894	SUBFRAME	1
2	53901	BRACKET, Rear Mount	1
3	53899	BRACKET, Left Front Hanger	1
4	53900	BRACKET, Right Front Hanger	1
5	6120-27	BUSHING	4
6	53885	BAR, Mount	2
7	44892	PIN	2
8	44756-1	PIN, Lynch	2
9	42969-4	HHCS, 3/4-10 x 2 3/4" LG. GR 8	4
10	47264-8	NUT, Lock 3/4-10	12
11	41838-102	HHCS, 7/8-9 X 4 1/2	2
12	41837-9	WASHER, Lock 7/8	2
13	41837-7	WASHER, Lock 5/8	12
14	49040-22	HHCS, M16-2.00MM X 130MM	4
15	42672-11	HHCS, M16-2.00MM X 35MM	4
16	42502-12	WASHER, Flat 5/8	4
17	41838-33	HHCS, 1/2-13 X 1 1/2" LG.	4
18	41840-5	NUT, Lock 1/2-13	4
19	48114	BRACKET, Rear Hanger	1
20	41836-9	NUT, Hex 7/8-9	2
21	41838-71	HHCS, 3/4-10 X 4, GR 5	4
22	49040-8	HHCS, M16-2.00MM X 100MM	8

**Figure 2**  
**Mounting Subframe**  
**to Tractor**



**Figure 3  
Subframe Assembly  
with Loader**



## GENERAL TORQUE SPECIFICATIONS

USE THE FOLLOWING TORQUES WHEN SPECIAL TORQUES ARE NOT GIVEN

### Standard American and Metric Cap Screws

AMERICAN STANDARD CAP SCREWS										METRIC CAP SCREWS							
SAE Grade	5				8				Metric Class	8.8				10.9			
Typ. Head Markings									Typ. Head Markings								
Cap Screw	TORQUE				TORQUE				Cap Screw	TORQUE				TORQUE			
Size	FT·LBS		N·m		FT·LBS		N·m		Size	FT·LBS		N·m		FT·LBS		N·m	
Inches	MIN	MAX	MIN	MAX	MIN	MAX	MIN	MAX	Millimeters	MIN	MAX	MIN	MAX	MIN	MAX	MIN	MAX
1/4 - 20	6.25	7.25	8.5	10	8.25	9.5	11	13	M6 x 1.00	6	8	8	11	9	11	12	15
1/4 - 28	8	9	11	12	10.5	12	14	16	M8 x 1.25	16	20	21.5	27	23	27	31	36.5
5/16 - 18	14	15	19	20	18.5	20	25	27	M10 x 1.50	29	35	39	47	42	52	57	70
5/16 - 24	17.5	19	23	26	23	25	31	34	M12 x 1.75	52	62	70	84	75	91	102	123
3/8 - 16	26	28	35	38	35	37	47.5	50	M14 x 2.00	85	103	115	139	120	146	163	198
3/8 - 24	31	34	42	46	41	45	55.5	61	M16 x 2.50	130	158	176	214	176	216	238	293
7/16 - 14	41	45	55.5	61	55	60	74.5	81	M18 x 2.50	172	210	233	284	240	294	325	398
7/16 - 20	51	55	69	74.5	68	75	92	102	M20 x 2.50	247	301	335	408	343	426	465	577
1/2 - 13	65	72	88	97.5	86	96	116	130	M22 x 2.50	332	404	450	547	472	576	639	780
1/2 - 20	76	84	103	114	102	112	138	152	M24 x 3.00	423	517	573	700	599	732	812	992
9/16 - 12	95	105	129	142	127	140	172	190	M27 x 3.00	637	779	863	1055	898	1098	1217	1488
9/16 - 18	111	123	150	167	148	164	200	222	M30 x 3.00	872	1066	1181	1444	1224	1496	1658	2027
5/8 - 11	126	139	171	188	168	185	228	251	<p><b>NOTE:</b> These values apply to fasteners as received from supplier, dry or when lubricated with normal engine oil. They do not apply if special graphite or moly sulphide greases or other extreme lubricants are used.</p>								
5/8 - 18	152	168	206	228	203	224	275	304									
3/4 - 10	238	262	322	355	318	350	431	474									
3/4 - 16	274	305	371	409	365	402	495	544									
7/8 - 9	350	386	474	523	466	515	631	698									
7/8 - 14	407	448	551	607	543	597	736	809									
1 - 8	537	592	728	802	716	790	970	1070									
1 - 14	670	740	908	1003	894	987	1211	1337									

### 37° JIC Fittings

Size	Thread Size	Assembly Torque		Tube Connection F. F. F. T.	Swivel Nut or Hose Connection F. F. F. T.
		in.·lb.	ft.·lb.		
-4	7/16 - 20	140 ± 10	12 ± 1	2	2
-5	1/2 - 20	180 ± 15	15 ± 1	2	2
-6	9/16 - 18	250 ± 15	21 ± 1	1 1/2	1 1/4
-8	3/4 - 16	550 ± 25	45 ± 5	1 1/2	1
-12	1 1/16 - 12	1000 ± 50	85 ± 5	1 1/4	1
-16	1 5/16 - 12	1450 ± 50	120 ± 5	1	1
-20	1 5/8 - 12	2000 ± 100	170 ± 10	1	1
-24	1 7/8 - 12	2400 ± 150	200 ± 15	1	1
-32	2 1/2 - 12	3200 ± 200	270 ± 20	1	1

### O-Ring Face Seal Tube/ Hose Swivel Nut

Metric Tube O.D. (mm)	Dash Size	Thread Size (in.)	Swivel Nut Hex Size (in.)	Swivel Nut Torque	
				N·m	lb.·ft
5	-3	--	--	--	--
6	-4	9/16 - 18	11/16	16	12
8	-5	--	--	--	--
10	-6	11/16 - 16	13/16	24	18
12	-8	13/16 - 16	15/16	50	37
16	-10	1 - 14	1-1/8	69	51
20	-12	1-3/16 - 12	1-3/8	102	75
22	-14	1-3/16 - 12	--	102	75
25	-16	1-7/16 - 12	1-5/8	142	105
32	-20	1-11/16 - 12	1-7/8	190	140
38	-24	2 - 12	2-1/4	217	160
50.8	-32	--	--	--	--

### SAE O-Ring Fittings

Size	Swivel Nut or Hose	Assembly Torque		F. F. F. T.
		in.·lb.	ft.·lb.	
2	5/16 - 24	90 ± 5	7.5 ± 0.5	1 ± .25
3	3/8 - 24	170 ± 10	14 ± 1	1 ± .25
4	7/16 - 20	220 ± 15	18 ± 1	1 ± .25
5	1/2 - 20	260 ± 15	22 ± 1	1 ± .25
6	9/16 - 18	320 ± 20	27 ± 2	1.5 ± .25
8	3/4 - 16	570 ± 25	48 ± 2	1.5 ± .25
10	7/8 - 14	1060 ± 50	90 ± 5	1.5 ± .25
12	1 1/16 - 12	1300 ± 50	110 ± 5	1.5 ± .25
14	1 3/16 - 12	1750 ± 75	145 ± 6	1.5 ± .25
16	1 5/16 - 12	1920 ± 125	160 ± 6	1.5 ± .25
20	1 5/8 - 12	2700 ± 150	225 ± 12	1.5 ± .25
24	1 7/8 - 12	3000 ± 150	250 ± 12	1.5 ± .25
32	2 1/2 - 12	3900 ± 200	325 ± 15	1.5 ± .25

# INSTALLATION INSTRUCTIONS