

Keep With Operator's Manual

## BACKHOE SUBFRAME KIT NEW HOLLAND OR CASE IH TRACTORS

MODEL	BACKHOE	TRACTOR	LOADER
NEW HOLLAND	756C,920GH, 930GH	BOOMER 8N, BOOMER 3040 EasyDrive™, BOOMER 3045 EasyDrive™, BOOMER 3050 EasyDrive™	250TL, 260TL
CASE IH	BHX172,BH90, BH102	FARMALL 40 CVT, FARMALL 45 CVT, FARMALL 50 CVT	LX116,LX350, L350

Subframe can be installed on tractor and backhoe using tools ordinarily available. Tractor must be equipped with loader to install subframe. References to left or right is from perspective of someone sitting on tractor seat facing forward.

Complete backhoe installation requires hydraulic kit 715431026 (2-7620). Install hydraulic kit to tractor before installing backhoe to tractor.

**NOTE:** This subframe is not compatible with 914A or MWX mowers.

### INSTALLING SUBFRAME TO BACKHOE (Figures 1 & 2)

1. Install subframe (1) to backhoe using 3/4" x 3-1/2" cap screws (8) and 3/4" Spiralock nuts (11) in front, holes, 3/4" x 4" cap screws (9) and 3/4" Spiralock nuts in rear, and 7/8" x 4" cap screws (12), 3/8" Spiralock nuts (20) in middle holes.
2. Fasten support braces (6) to outside of subframe and inside of backhoe frame using 3/4" x 2-3/4" cap screws (7), 3/4" lock nuts (10) and then install double nut (10) (Torque to 350 ft lbs).

**NOTE:** 756C backhoe use front set of mounting holes for braces.

### INSTALLING MOUNTING BRACKETS (Figures 1 & 3)

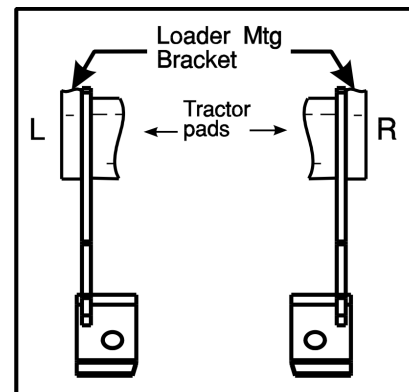
1. Remove 16mm cap screws which secure hitch to underside of tractor.

**NOTE:** It may be necessary to support hitch assembly when 16mm cap screws are removed.

2. Remove PTO shield. Install Rear Hanger (2) using 16mm x 130mm cap screws (22) and original lock washers, but do not tighten bolts.
3. Attach the rear hanger bracket (3) with the legs of the bracket facing the tractor and PTO shield to the transmission housing using 12mm x 35mm cap screws (23) and 1/2" lock washers (16), and 1/2" flat washers (17) in the upper holes. In the lower holes,

use 8mm x 30mm cap screws (24), 3/8" lock washers (19), and 3/8" flat washers (20). Leave hardware loose.

4. Bolt rear hanger bracket (3) to rear hanger (2) to rear hanger bracket (2) using 1/2" x 1-1/2" cap screws (14) and 1/2" lock nuts (15).
5. Tighten all hardware. Remove cap screws which secure loader mid-mounting brackets to tractor, and remove spacer plates from tractor.
6. If tractor is equipped with 250TL or 260TL loader, install front mounting brackets (4 & 5) using 16mm x 90mm cap screws (21) with 5/8" lock washers (18) in upper and lower holes. Brackets mount between tractor and loader in front four holes of six hole pattern.



**Figure 1  
Installing Mount  
Brackets**

7. Torque all bolts to specifications in backhoe manual unless otherwise specified.

### MOUNTING BACKHOE TO TRACTOR (Figure 2)

1. Back tractor slowly toward backhoe, parallel to subframe assembly, until hoses can be connected to tractor.
2. Connect hoses to tractor hydraulics.
3. Using backhoe controls, extend bucket and lower stabilizers to provide a base for raising subframe. Using backhoe controls, raise subframe to proper height to connect to tractor.

### MOUNTING BACKHOE TO TRACTOR (Figure 2) (Continued)

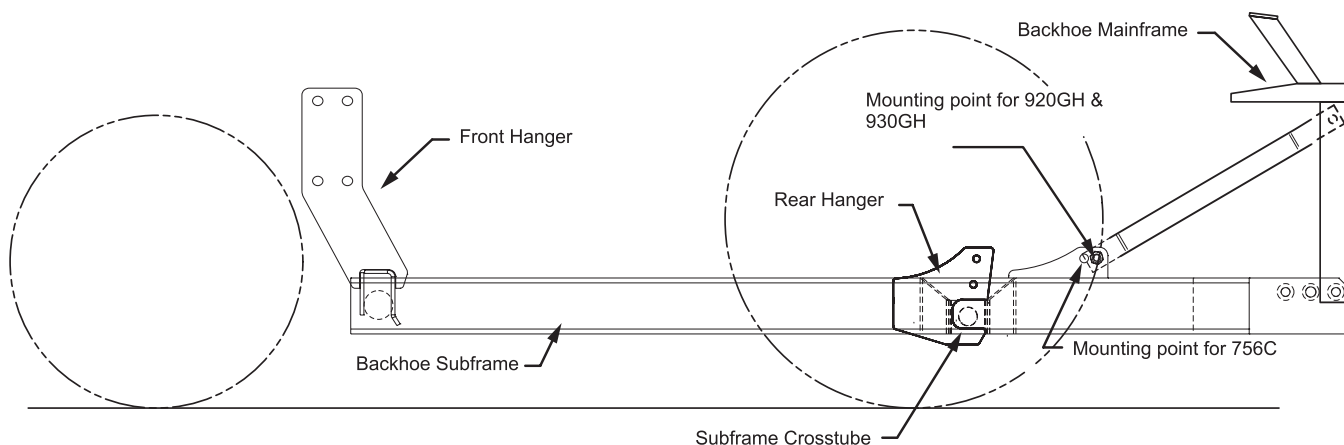
4. Position 3-point hitch arms inside subframe support braces.

5. Back tractor and position subframe so crosstube engages pocket in rear hanger (2) and crosstube on front of subframe align with front mounting brackets (4 & 5). Use backhoe controls to engage front crosstube on subframe into front mounting brackets. Install 3/4" pins (26) and lynch pins (25).

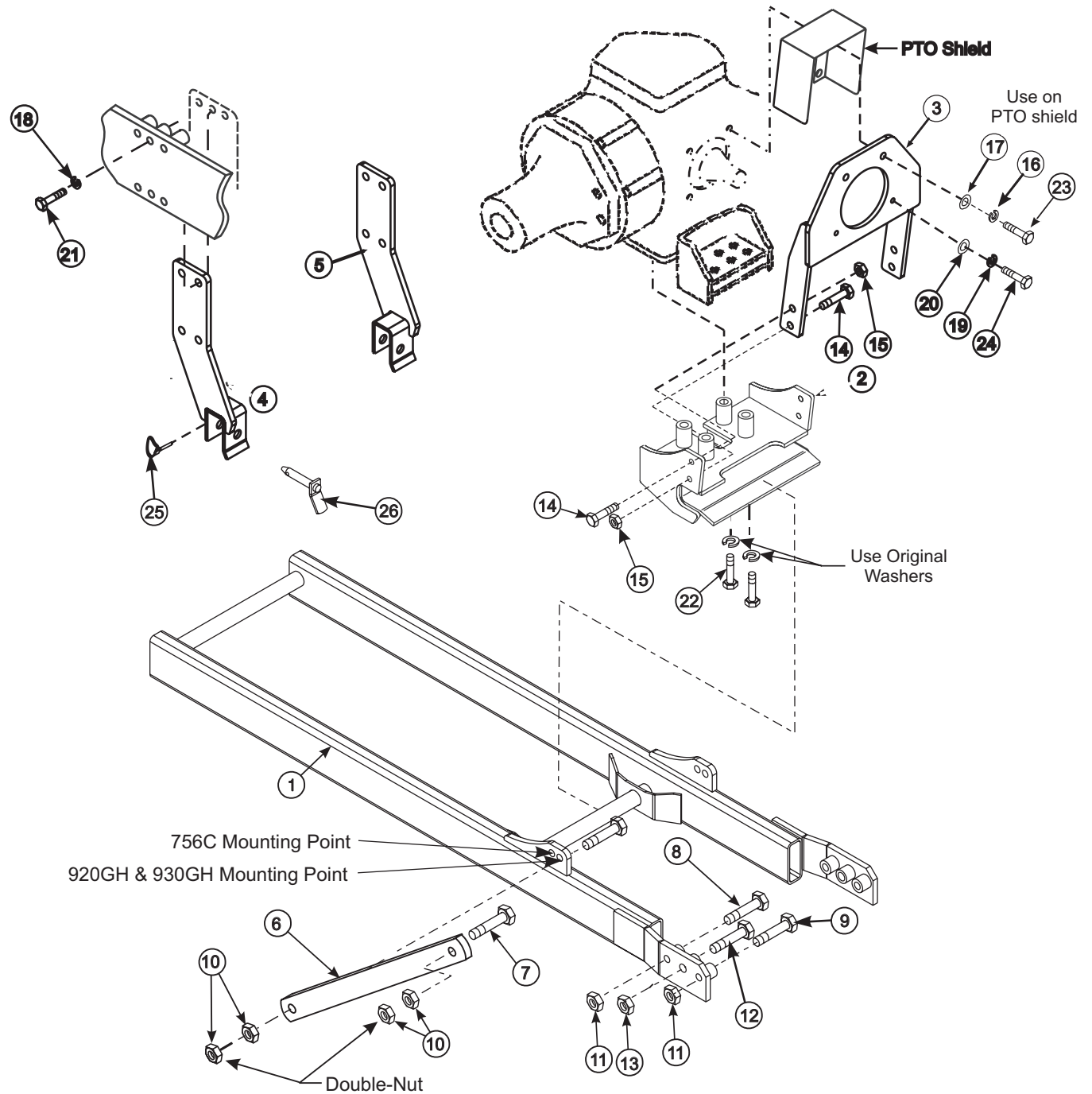
### PARTS LIST - SUBFRAME KIT

ITEM	PART NO.	DESCRIPTION	QTY.
1	53894	WDMT, Subframe	1
2	55486	WDMT, Rear Hanger	1
3	55490	WDMT, Rear Hanger Bracket	1
4	55493	WDMT, Front Hanger, Left	1
5	55494	WDMT, Front Hanger, Right	1
6	53885	BAR, Mount	2
7	42969-4	HHCS, 3/4-10 X 2.75 GR8	4
8	41838-43	HHCS, 3/4-10 X 3-1/2 GR5	2
9	41838-71	HHCS, 3/4-10 X 4.00 GR5	2
10	47264-8	NUT, Lock, 3/4-10, GRC	8
11	54591-1	NUT, Hex Flange- SPIRALOCK, 3/4-10	4
12	41838-46	HHCS, 7/8-9 X 4.00 GR5	2
13	54591-2	NUT, Hex Flange- SPIRALOCK, 7/8-9	2
14	41838-33	HHCS, 1/2-13 X 1.50 GR5	4
15	41840-5	NUT, Lock, 1/2-13	4
16	41837-5	WASHER, Lock 1/2	2
17	42502-8	WASHER, Flat 1/2	2
18	41837-7	WASHER, Lock 5/8	8
19	41837-3	WASHER, Lock 3/8	2
20	42502-10	WASHER, Flat 3/8	2
21	49040-10	HHCS, M16-2.00 X 90mm CL 10.9 YDP	8
22	49040-22	HHCS, M16-2.00 X 130mm CL 10.9 YDP	4
23	49040-11	HHCS, M12-1.75 X 35mm CL 10.9 YDP	2
24	49040-54	HHCS, M8-1.25 X 30mm CL 10.9 YDP	2
25	44756-1	PIN, Linch	2
26	44892	PIN, Assembly	2

**Figure 2**  
**Mounting Subframe**  
**to Tractor**







**Figure 3**  
**Subframe Assembly**  
**with Loader**



**GENERAL TORQUE SPECIFICATIONS**

USE THE FOLLOWING TORQUES WHEN SPECIAL TORQUES ARE NOT GIVEN

**Standard American and Metric Cap Screws**

AMERICAN STANDARD CAP SCREWS									METRIC CAP SCREWS								
SAE Grade	5				8				Metric Class	8.8				10.9			
Typ. Head Markings									Typ. Head Markings								
Cap Screw	TORQUE				TORQUE				Cap Screw	TORQUE				TORQUE			
Size	FT-LBS		N-m		FT-LBS		N-m		Size	FT-LBS		N-m		FT-LBS		N-m	
Inches	MIN	MAX	MIN	MAX	MIN	MAX	MIN	MAX	Millimeters	MIN	MAX	MIN	MAX	MIN	MAX	MIN	MAX
1/4 - 20	6.25	7.25	8.5	10	8.25	9.5	11	13	M6 x 1.00	6	8	8	11	9	11	12	15
1/4 - 28	8	9	11	12	10.5	12	14	16	M8 x 1.25	16	20	21.5	27	23	27	31	36.5
5/16 - 18	14	15	19	20	18.5	20	25	27	M10 x 1.50	29	35	39	47	42	52	57	70
5/16 - 24	17.5	19	23	26	23	25	31	34	M12 x 1.75	52	62	70	84	75	91	102	123
3/8 - 16	26	28	35	38	35	37	47.5	50	M14 x 2.00	85	103	115	139	120	146	163	198
3/8 - 24	31	34	42	46	41	45	55.5	61	M16 x 2.50	130	158	176	214	176	216	238	293
7/16 - 14	41	45	55.5	61	55	60	74.5	81	M18 x 2.50	172	210	233	284	240	294	325	398
7/16 - 20	51	55	69	74.5	68	75	92	102	M20 x 2.50	247	301	335	408	343	426	465	577
1/2 - 13	65	72	88	97.5	86	96	116	130	M22 x 2.50	332	404	450	547	472	576	639	780
1/2 - 20	76	84	103	114	102	112	138	152	M24 x 3.00	423	517	573	700	599	732	812	992
9/16 - 12	95	105	129	142	127	140	172	190	M27 x 3.00	637	779	863	1055	898	1098	1217	1488
9/16 - 18	111	123	150	167	148	164	200	222	M30 x 3.00	872	1066	1181	1444	1224	1496	1658	2027
5/8 - 11	126	139	171	188	168	185	228	251	<b>NOTE:</b> These values apply to fasteners as received from supplier, dry or when lubricated with normal engine oil. They do not apply if special graphite or molybdenum greases or other extreme lubricants are used.								
5/8 - 18	152	168	206	228	203	224	275	304									
3/4 - 10	238	262	322	355	318	350	431	474									
3/4 - 16	274	305	371	409	365	402	495	544									
7/8 - 9	350	386	474	523	466	515	631	698									
7/8 - 14	407	448	551	607	543	597	736	809									
1 - 8	537	592	728	802	716	790	970	1070									
1 - 14	670	740	908	1003	894	987	1211	1337									

# INSTALLATION INSTRUCTIONS